

PHASE 1 STORMWATER MANAGEMENT SUMMARY

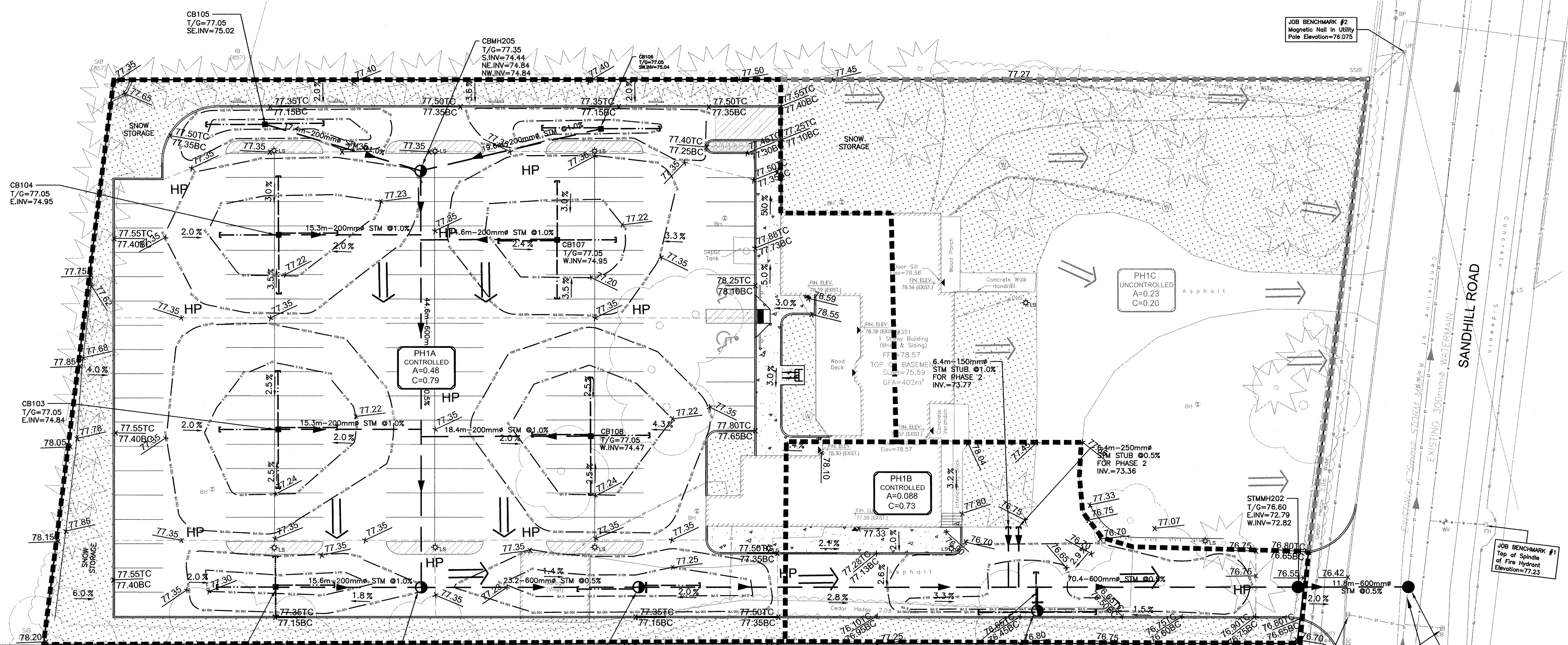
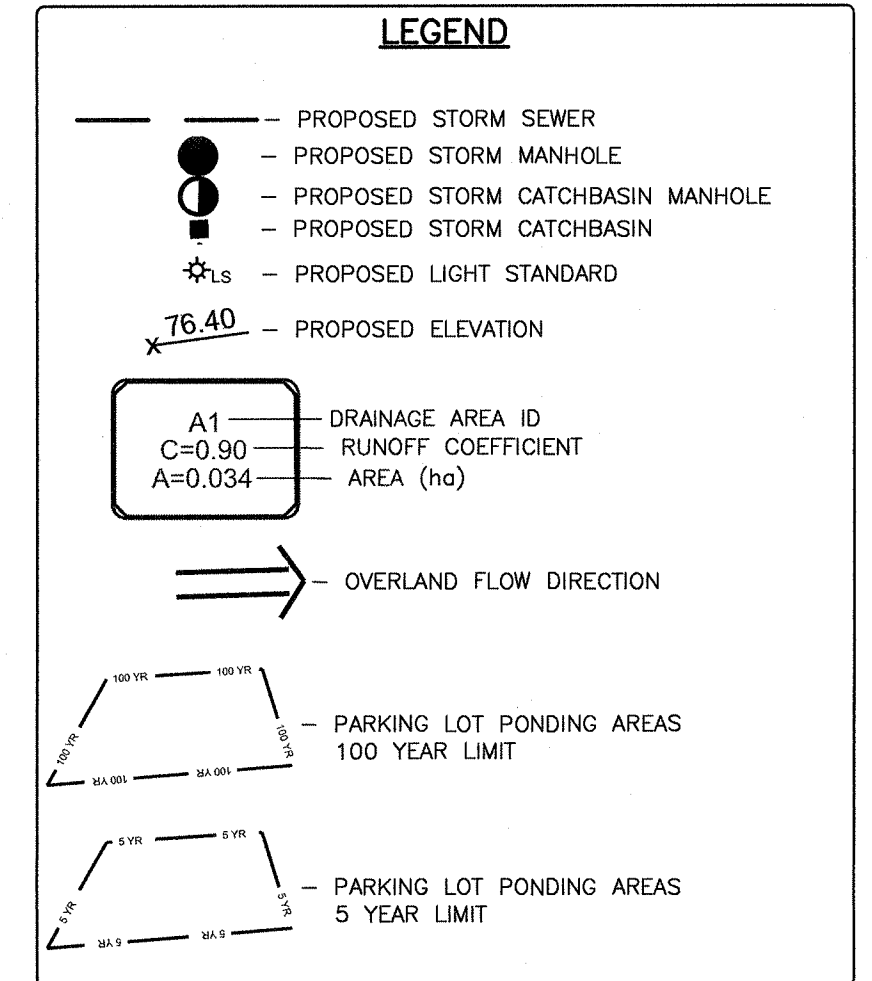
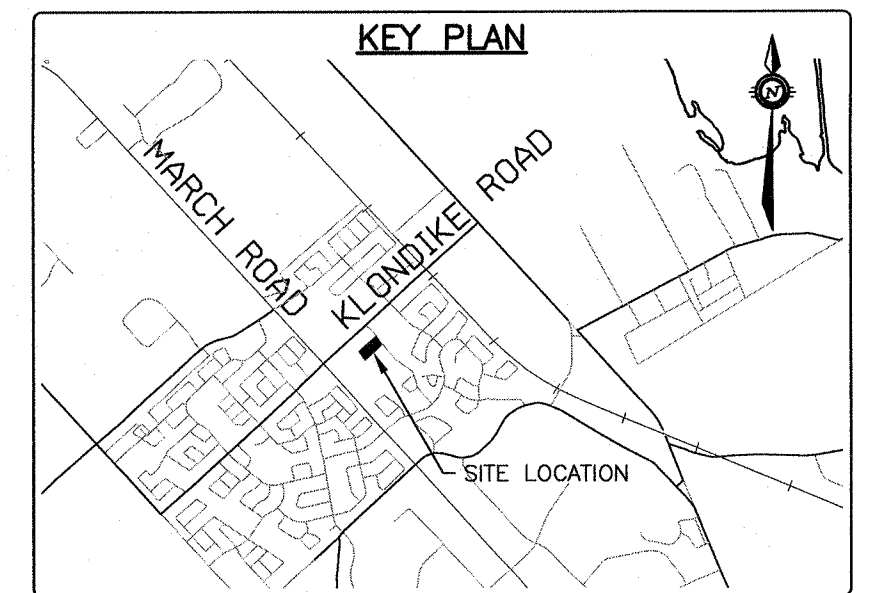
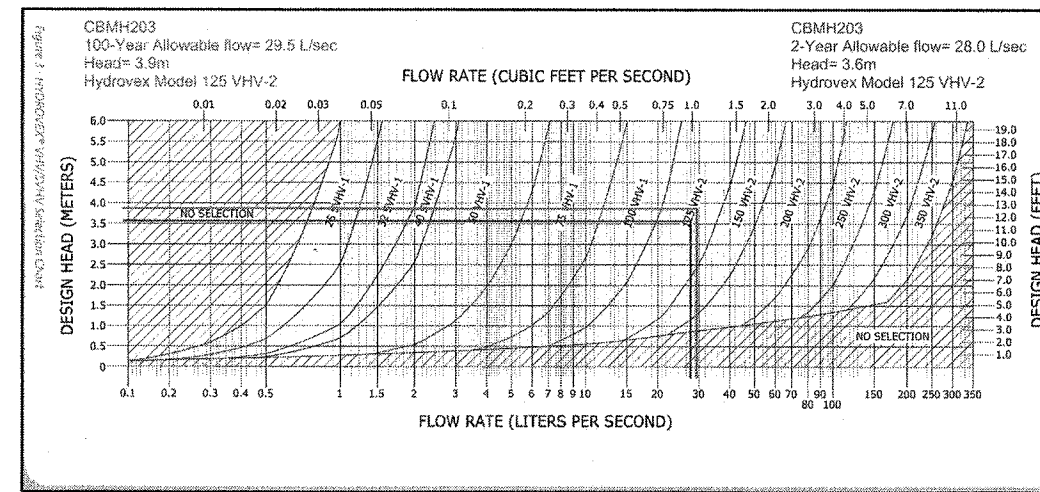
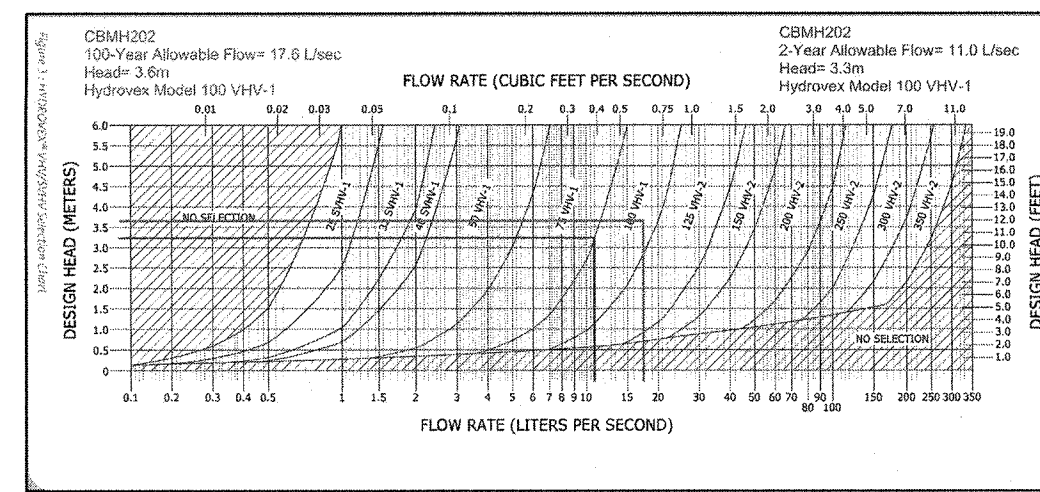
Area ID	Area (ha)	Runoff Coefficient 'C'	2 Year Release (L/s)	2 Year storage required (m ³)	2 Year underground storage provided (m ³)	100 Year Release (L/s)	100 Year storage required (m ³)	100 Year surface storage provided (m ³)
PH1A	0.486	0.79	28.0	34.3	35.1	29.5	166.3	193.5
PH1B	0.088	0.73	11.0	0.0	0.0	17.6	12.7	25.3
TOTAL	0.57							
Totals:			39.0	34.3	35.1	47.1	180.9	218.8
Total Allowable Release (L/s):			48.74					

PH1A - 100 YEAR SURFACE STORAGE VOLUMES

Ponding Location	Surface Area (m ²)	Ponding Depth (m)	Volume (m ³)
CB102	132	0.30	13.2
CB103	368.00	0.30	36.8
CB104	342.00	0.30	34.2
CB105	86.0	0.30	8.6
CB106	82.0	0.30	8.2
CB107	309.0	0.30	30.9
CB108	401.0	0.30	40.1
CBMH203	184	0.35	21.5
Total Volume			193.5

PH1B - 100 YEAR SURFACE STORAGE VOLUMES

Ponding Location	Surface Area (m ²)	Ponding Depth (m)	Volume (m ³)
CBMH202	217	0.35	25.3
Total Volume			25.3



Derrick Moodie
DERRICK MOODIE
 MANAGER
 PLANNING, INFRASTRUCTURE & ECONOMIC
 DEVELOPMENT DEPARTMENT, CITY OF OTTAWA

APPROVED
 By Derrick Moodie at 10:55 am, Jun 12, 2019

CAUTION
 THE POSITION OF ALL POLE LINES, CONDUITS, WATERMANS, SEWERS AND OTHER UNDERGROUND AND OVERGROUND UTILITIES AND STRUCTURES IS NOT NECESSARILY SHOWN ON THE CONTRACT DRAWINGS, AND WHERE SHOWN, THE ACCURACY OF THE POSITION OF SUCH UTILITIES AND STRUCTURES IS NOT GUARANTEED. BEFORE STARTING WORK, DETERMINE THE EXACT LOCATION OF ALL SUCH UTILITIES AND STRUCTURES AND ASSUME ALL LIABILITY FOR DAMAGE TO THEM.

NO.	REVISION DESCRIPTION	DATE	BY	APPD
6	REMOVED RETAINING WALL AT SOUTH PROPERTY LINE	24/05/19	AE	AA
5	REVISED AS PER CITY COMMENTS	16/04/19	AE	AA
4	REVISED AS PER CITY COMMENTS	19/02/19	AE	AA
3	REVISED AS PER CITY COMMENTS	02/11/18	AE	AA
2	ISSUED FOR SITE PLAN APPROVAL	29/06/18	AE	AA
1	ISSUED FOR SITE PLAN APPROVAL	13/09/17	ML	AA

SCALE: 1:250
 HORIZONTAL
 NORTH

DESIGNED BY: M.A. ANSARI
 REVIEWED BY: M.A. ANSARI
 LICENSED PROFESSIONAL ENGINEER
 M.A. ANSARI
 24/5/2019
 PROVINCE OF ONTARIO

CLIENT: **KANATA MUSLIM ASSOCIATION**
 832 MARCH ROAD, OTTAWA, ON.
 K2W 0C9
 613.973.5000

exp. BUILDINGS • EARTH & ENVIRONMENT • ENERGY • INDUSTRIAL • INFRASTRUCTURE • SUSTAINABILITY

PROJECT: **KMA MOSQUE AND COMMUNITY CENTRE**
 351 SANDHILL ROAD, OTTAWA, ON

PROJECT No.: OTT-00238504-AD
 SURVEY: F M & W
 DATE: 2016-12-09
 DRAWING No.: SWM-1