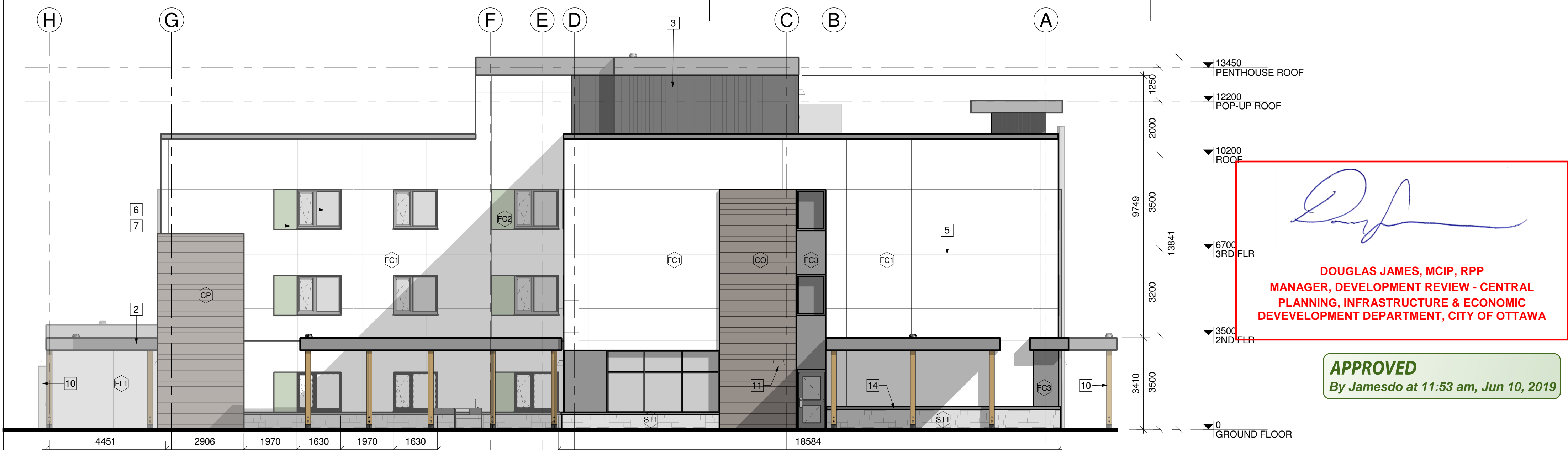
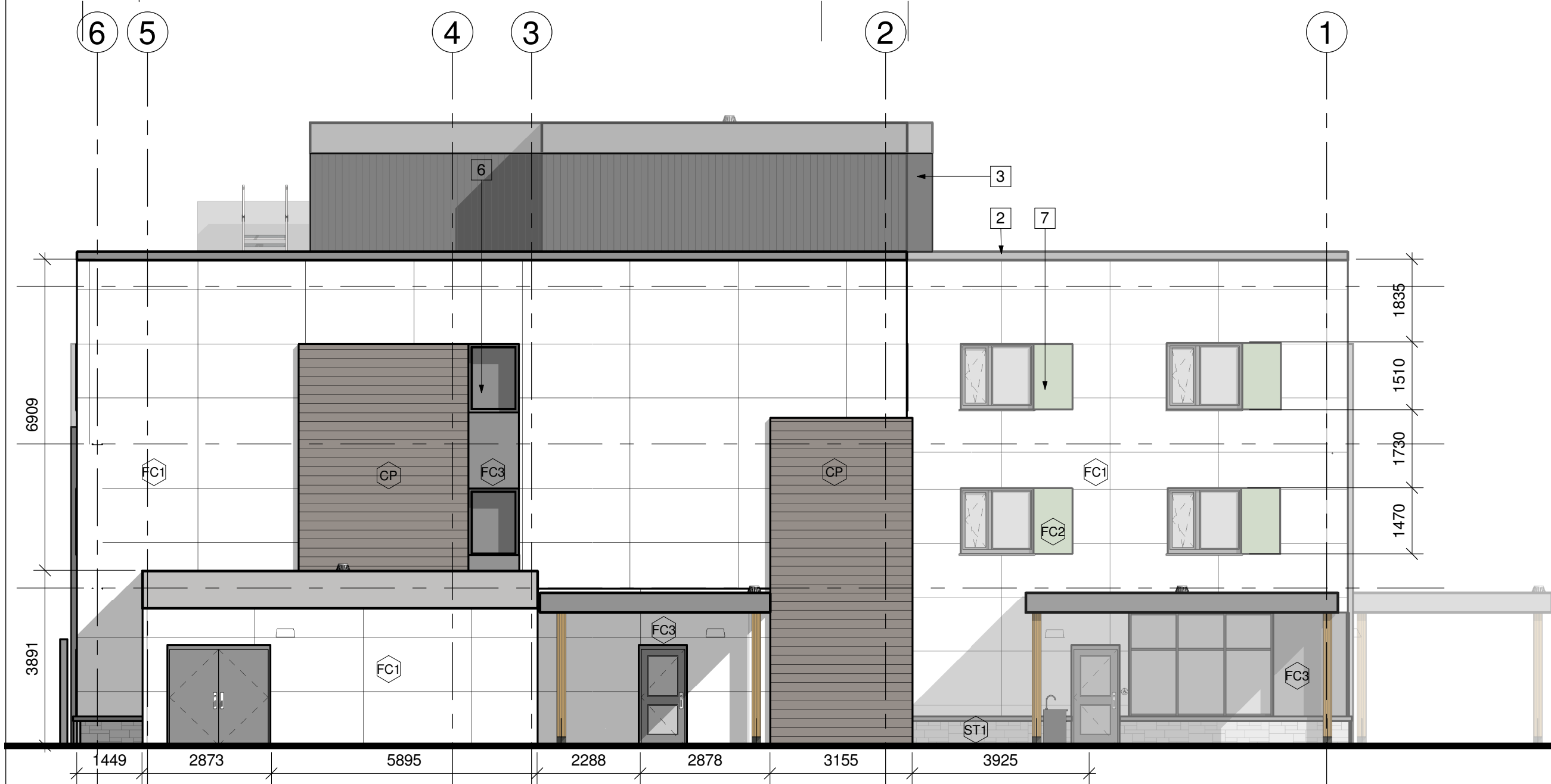


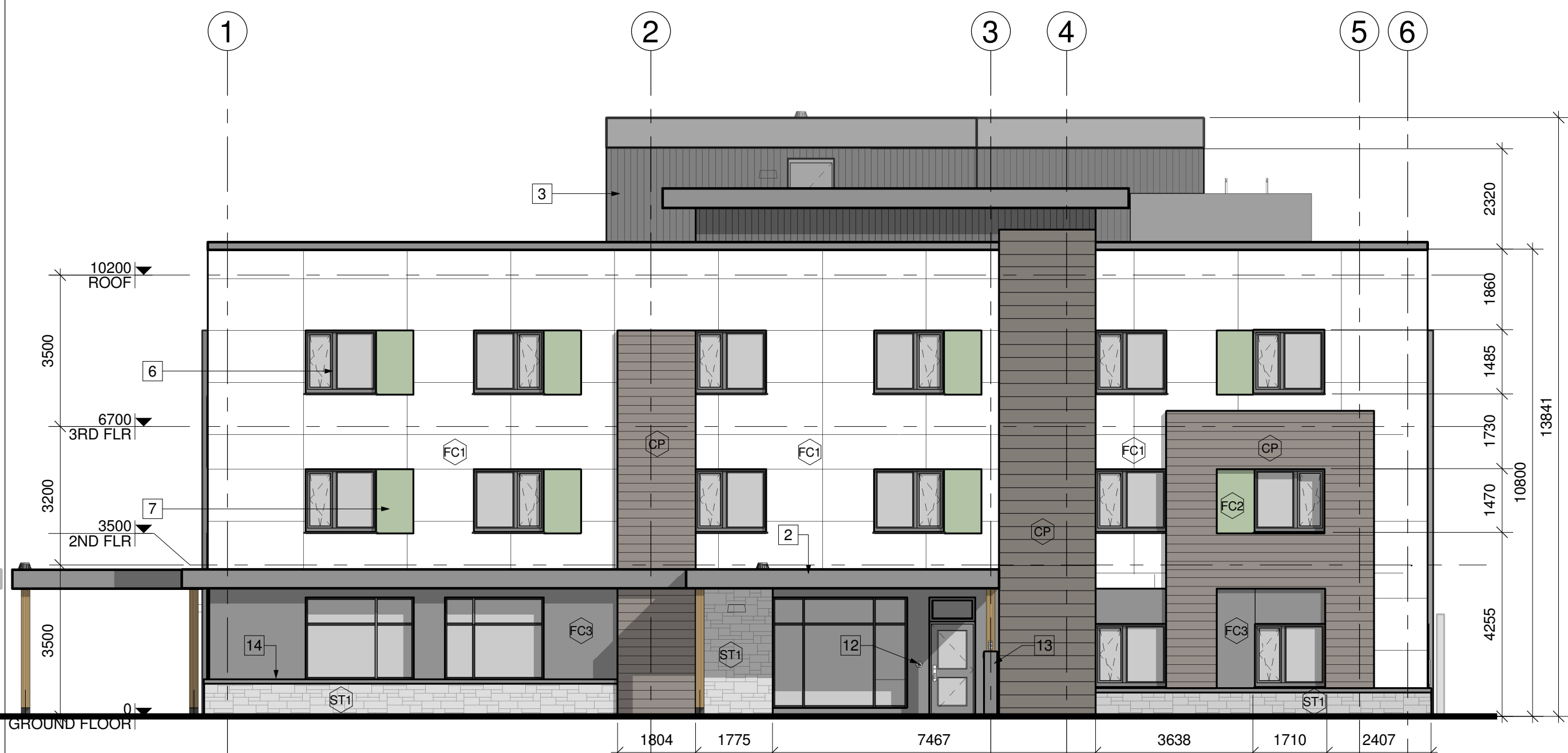
1 EAST ELEVATION
A.300 1:100



2 WEST ELEVATION
A.300 1:100



3 NORTH ELEVATION
A.300 1:100



4 SOUTH ELEVATION
A.300 1:100

GENERAL NOTES:

CONTRACTOR TO COORDINATE WITH MANUFACTURER'S SPECIFICATIONS AND INSTALLATIONS GUIDELINES FOR ALL MATERIAL SEALING, TRANSITIONS, SEPARATIONS, FLASHING DETAILS, CONNECTIONS, ANCHORAGES, ETC. CONTRACTOR TO PROVIDE DETAIL DRAWINGS OR MOCK-UP FOR ARCHITECT'S REVIEW AND APPROVAL FOR ALL SPECIAL CONDITIONS NOT SHOWN IN THE CONTRACT DOCUMENTS.

EXTERIOR MATERIALS LEGEND

HATCH PATTERNS SHOWN ARE FOR GRAPHIC PURPOSES ONLY AND SHOULD BE COORDINATED WITH ACTUAL SPECIFIED MATERIALS.

HATCH	SYMBOL	DESCRIPTION
	ST1	STONE VENEER - ASHLAR W/ CONCAVE JOINTS MANUFACTURER: ARRISCRAFT COLOUR: CHARCOAL - LAURIER
	WS	WOOD SLAT SCREEN COLOUR: CEDAR - STAINED NATURAL
	CP	WOOD SLATS MANUFACTURER: COLOUR:
	FC1	FIBER CEMENT CLADDING MANUFACTURER: TBC COLOUR: SAND
	FC2	FIBER CEMENT CLADDING MANUFACTURER: TBC COLOUR: GREEN
	FC3	FIBER CEMENT CLADDING MANUFACTURER: TBC COLOUR: CHARCOAL
	MS	PREFINISHED CORRUGATED METAL SIDING (VERTICAL) COLOUR: CHARCOAL
	MC	METAL COMPOSITE PANEL SYSTEM MANUFACTURER: ALUCOBOND COLOUR: DUSTY CHARCOAL

KEYNOTES:

- SEMI-TRANSPARENT WOOD SCREEN
- METAL ROOF FLASHING
- MECHANICAL PENTHOUSE
- ROOF OVER FLOW SCUPPER
- METAL PANEL REVEAL
- UPVC WINDOW - BLACK (TYP.)
- FEATURE ACCENT FIBRE CEMENT PANEL
- CLIMBING PLANTING - SEE LANDSCAPE
- NOT USED
- 200 X 200mm CEDAR ENGINEERED TIMBER POST W/ GALVANIZED COLUMN CONNECTION - SEE STRUCTURAL
- WALL MOUNTED LIGHT FIXTURE - SEE ELECTRICAL
- WALL MOUNTED DOOR OPERATOR BUTTON - SEE ELECTRICAL
- SIGNAGE
- PRECAST MASONRY CAP
- SELF SUPPORTING ENGINEERED TIMBER CANOPY
- GALVANIZED STEEL CROSSOVER WALKWAY
- MECHANICAL EQUIPMENT - SEE MECHANICAL
- EXPANSION JOINT - SEE DETAILS AND STRUCTURAL
- SLOPED CRICKET BEYOND - SEE DETAIL
- WALL MOUNTED GAS METER - SEE MECHANICAL AND CIVIL

DOUGLAS JAMES, MCIP, RPP
MANAGER, DEVELOPMENT REVIEW - CENTRAL
PLANNING, INFRASTRUCTURE & ECONOMIC
DEVELOPMENT DEPARTMENT, CITY OF OTTAWA

APPROVED
By Jamesdo at 11:53 am, Jun 10, 2019



STAMP

REV	DATE	ISSUE
6	2019.03.26	Reissued for Site Plan Control
4	2019.01.24	Reissued for Site Plan Control
2	2018.10.17	Issued for Site Plan Control
1	2018.07.20	Issued for CLC Review

NOTE

- OWNERSHIP OF THE COPYRIGHT OF THE DESIGN AND THE WORKS EXECUTED FROM THE DESIGN REMAINS WITH CSV ARCHITECTS, AND MAY NOT BE REPRODUCED IN ANY FORM WITHOUT THE WRITTEN CONSENT OF CSV ARCHITECTS.
- THE DRAWINGS, PRESENTATIONS AND SPECIFICATIONS AS INSTRUMENTS OF SERVICE ARE AND SHALL REMAIN THE PROPERTY OF CSV ARCHITECTS. THEY ARE NOT TO BE USED BY THE CLIENT ON OTHER PROJECTS OR ON EXTENSIONS TO THIS PROJECT WITHOUT THE WRITTEN CONSENT OF CSV ARCHITECTS.
- THIS DRAWING IS TO BE READ IN CONJUNCTION WITH ALL OTHER PROJECT DRAWINGS AND SPECIFICATIONS.
- DO NOT SCALE DRAWINGS. CONTRACTOR SHALL BE RESPONSIBLE TO VERIFY DIMENSIONS ON SITE.
- ALL WORK SHALL BE IN ACCORDANCE WITH THE ONTARIO BUILDING CODE AND ALL SUPPLEMENTS AND APPLICABLE MUNICIPAL REGULATIONS.

CLIENT

MULTIFAITH HOUSING INITIATIVE

404 McArthur Ave, Suite 206
Ottawa, ON

PROJECT

MHI VETERAN'S HOUSE

745 Mikinak Road, Ottawa, ON

TITLE

ELEVATIONS

PROJECT NO: 2015-0300
DRAWN: AL/RG
APPROVED: RG/MB
SCALE: As indicated
FIRST ISSUE: 2018.07.20

REV DRAWING NO.

6

A.300

17800