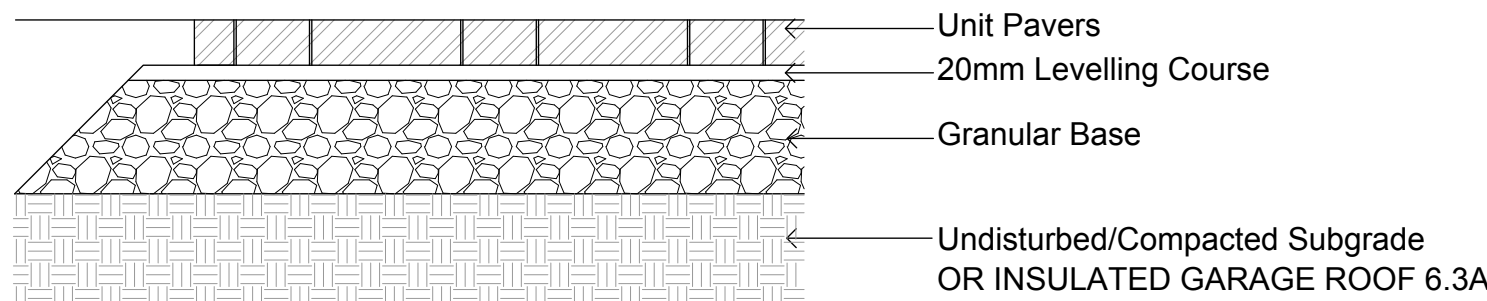


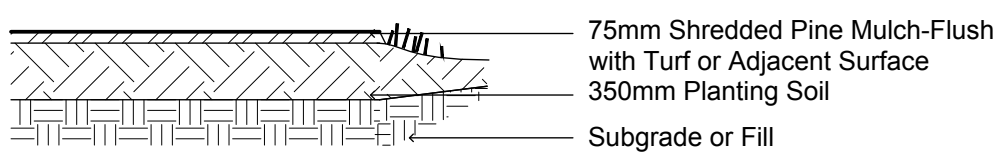
TURF AREAS TO BE SOD C/W 150MM DEPTH TOPSOIL ON APPROVED SUBGRADE.  
SOD TO BE NUMBER ONE GRADE TURFGRASS NURSERY SOD per NSGA - Fine Fescue/Kentucky Bluegrass Sod.  
PLANTING MIX TO BE APPROVED BY LANDSCAPE ARCHITECT.  
ALL PLANT MATERIAL TO MEET CNLA STANDARDS, AND BE APPROVED BY LANDSCAPE ARCHITECT PRIOR TO PLANTING.  
REFER TO CIVIL ENGINEER'S DRAWING FOR ELEVATIONS / GRADING.  
ALL WORK TO INCLUDE 1 YEAR WARRANTY FROM DATE OF FINAL ACCEPTANCE.  
MAINTAIN ALL AREAS UNTIL FINAL ACCEPTANCE, INCLUDING MOWING OF TURF, WEEDING OF BEDS, WATERING, SWEEPING HARD SURFACES.  
PROVIDE WATERING OF ALL TURF AND PLANT MATERIAL AS REQUIRED FOR PROPER ESTABLISHMENT, UNTIL END OF WARRANTY PERIOD.

The Landscape Plan is to be read in conjunction with the grading and survey plan, underground services engineering drawings, construction details and contract documents and cannot be used for construction until signed by the landscape architect. Bare root material to be planted in season only. All plant material locations to be staked on site by the landscape contractor and checked by the landscape architect prior to planting. All trees to be preserved on or directly adjacent to the site will be protected. Plant material are to be installed a minimum of: 3.0m away from any part of any hydro transformer, 3.0m corridor between a fire hydrant and the curb, a 2.5m radius beside or behind a fire hydrant, 2.0m from any servicing/utility line or structure.

Plant List - Trees - 784 St. Laurent					
Code	Qty.	Botanical Name	Common Name	Size	Condition
Aca	3	Amelanchier canadensis	Tree Serviceberry	60mm cal	B + B specimen
AS	1	Acer saccharum	Sugar Maple	60mm cal	B + B specimen
CO	1	Celtis occidentalis	Common Hackberry	60mm cal	B + B specimen
GB	7	Ginkgo biloba	Maidenhair Tree	60mm cal	B + B specimen
AB	1	Abies balsamea	Balsam Fir	1.5m Ht.	B + B specimen
JV	2	Juniperus virginiana	Eastern Red Cedar	1.5m Ht.	B + B specimen
PG	1	Picea glauca	White Spruce	1.5m Ht.	B + B specimen
PS	1	Pinus strobus	White Pine	1.5m Ht.	B + B specimen
Plant List - Shrubs - 784 St. Laurent					
Code	Qty.	Botanical Name	Common Name	Size	Condition
AC	45	Amelanchier canadensis	Serviceberry	80cm Ht.	Pot
CR	45	Cornus racemosa	Grey Dogwood	80cm Ht.	Pot
HK	100	Hypericum kalmianum	St. John's Wort	40cm Ht.	Pot
SA	105	Spiraea alba	Meadowsweet	60cm Ht.	Pot
SB	70	Spiraea bumalda 'Dart's Red'	Dart's Red Spirea	60cm Ht.	Pot
VL	45	Viburnum lentago	Nannyberry	80cm Ht.	Pot

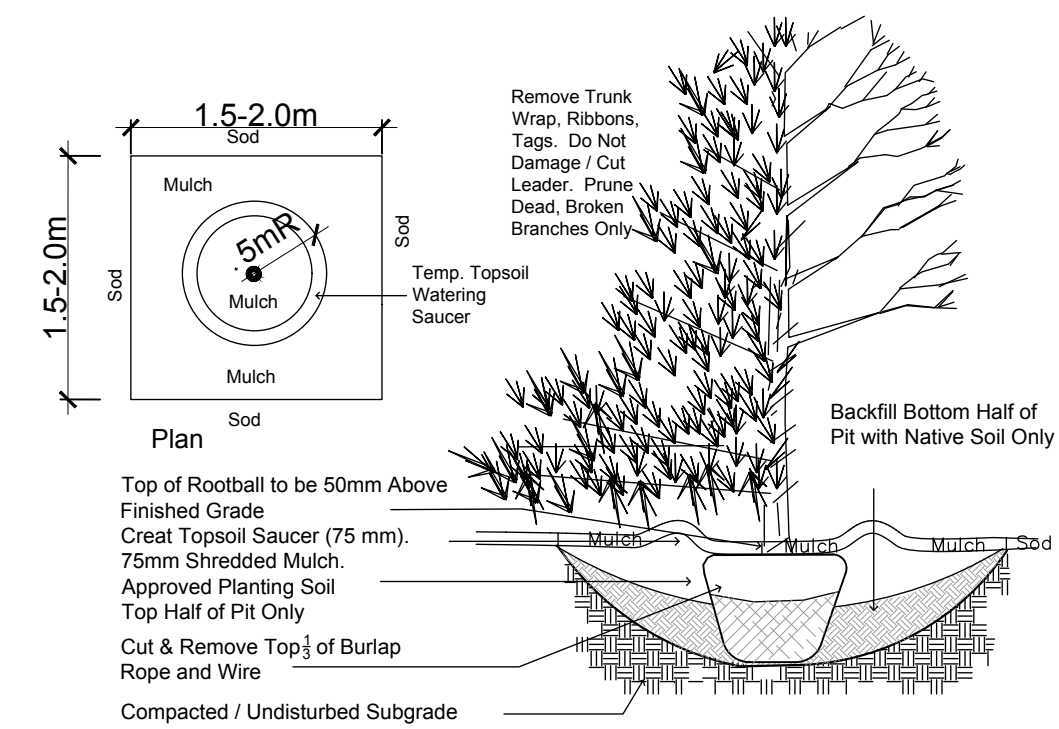


UNIT PAVING  
LINEA PAVERS BY TECO BLOC CHESTNUT BROWN - PATTERN / SIZING PER 01 LINEAR PATTERN

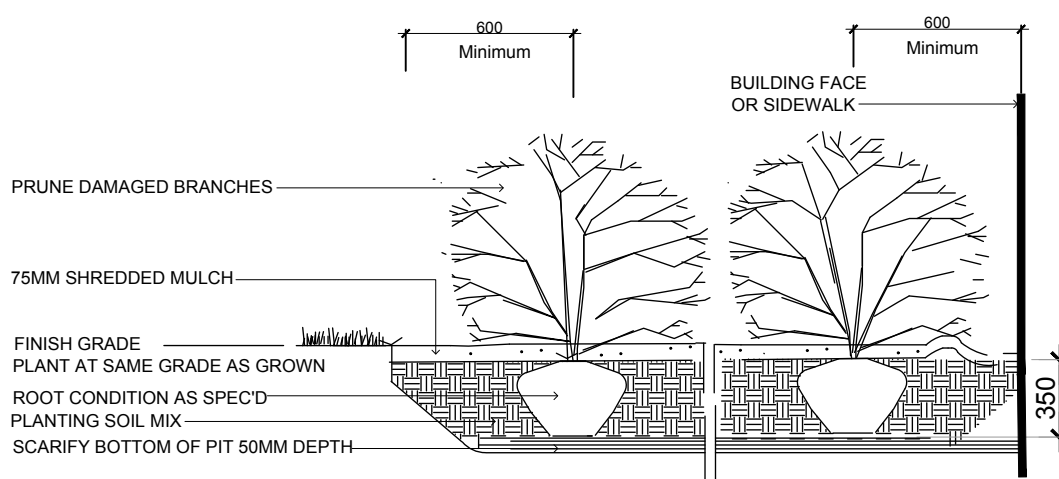


TYPICAL PLANTING BED

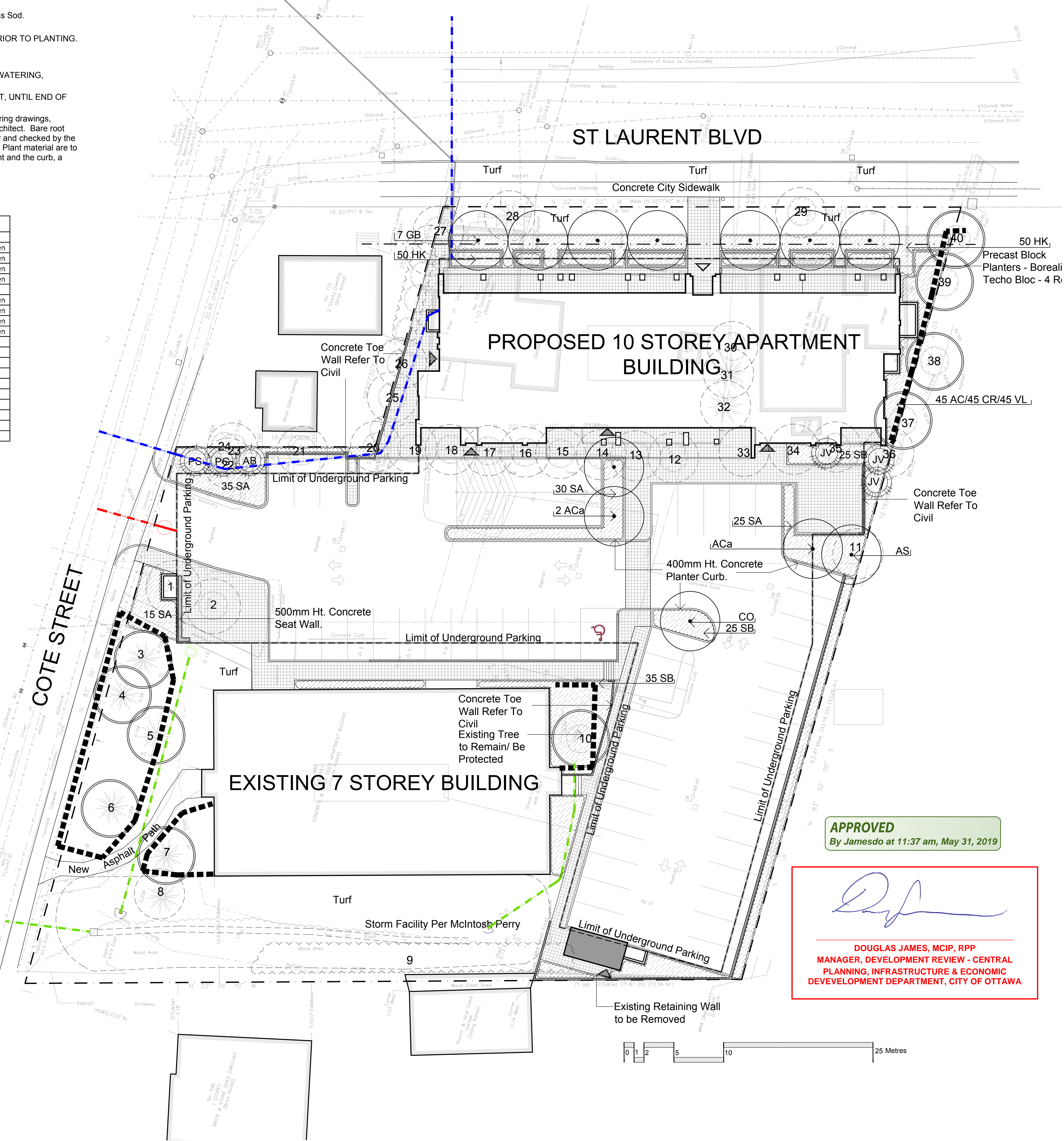
During Excavation/Bed Preparation if Extreme Conditions are Encountered (Water, Rock, Gravel...) that Could Effect the Planting, Notify GJALA Immediately.



TREE PLANTING  
Section



SHRUB PLANTING

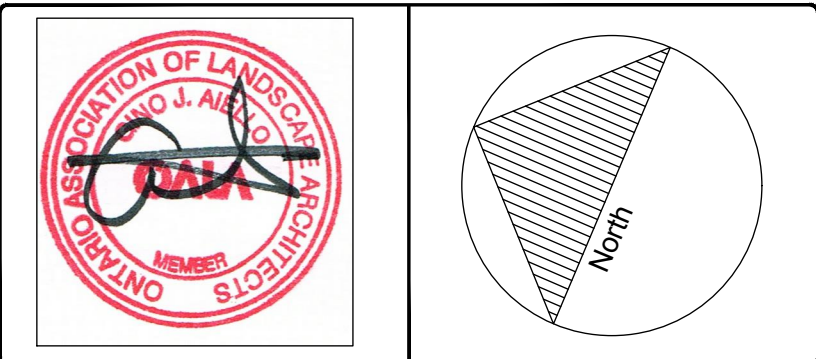


Drawing Remains the Property of Gino J. Aiello Landscape Architect. Copyright Reserved by Gino J. Aiello Landscape Architect. Do Not Use or Reproduce Without Approval of Gino J. Aiello. Do Not Use For Construction Unless Signed By Landscape Architect. Contractor is Responsible for Verification of Site Locations of all Utilities. Report any Discrepancies Between Site and Drawing Immediately to Gino J. Aiello.

Refer to TCR by IFS

- Existing Tree Protection Fencing
- Existing Tree to Remain
- Existing Tree to be Removed
- Proposed Coniferous Tree
- Proposed Deciduous Tree
- Proposed Planting Bed
- Pavers

REVISIONS	
6	For Site Plan Control FINAL
5	For Site Plan Control / Revised Site
4	For Site Plan Control Submission 2
3	For Site Plan Control
2	For Coordination
1	For Review
No	Revision
	Date



Property Owner  
**1252066 Ontario Inc.**  
231 Brittany Drive – Suite D Ottawa, ON K1K 0R8

Consultant  
Gino J. Aiello landscape architect  
GINO@GJALA.com (613) 862 1343  
110 Didsbury Drive #9 Ottawa K2T 0C2

Project  
**784 St. Laurent**  
784 St. Laurent Boulevard Ottawa

Drawing  
**Landscape Plan**

Drawn By: GJA  
Design By: GJA  
Date: July 2017  
Scale: 1:200

Sheet Number  
**L1**

APPROVED  
By Jamesdo at 11:37 am, May 31, 2019

DOUGLAS JAMES, MCIP, RPP  
MANAGER, DEVELOPMENT REVIEW - CENTRAL  
PLANNING, INFRASTRUCTURE & ECONOMIC  
DEVELOPMENT DEPARTMENT, CITY OF OTTAWA