

1. POSTS TO BE SPACED AT 2.3 METRES CENTRE TO CENTRE.
2. WHEN TWO SECTIONS OF FILTER CLOTH ADJOIN EACH OTHER THEY SHALL BE OVERLAPPED BY A MINIMUM OF 500mm.
3. MAINTENANCE SHALL BE PERFORMED AS NEEDED AND MATERIAL REMOVED WHEN "BULGES" DEVELOP IN THE SILT FENCE.
4. WOOD POSTS TO BE HARDWOOD TYPE (50mm x 50mm).
5. GEOTEXTILE TO BE EMBEDDED 200 mm INTO GROUND.
6. GEOTEXTILE TO CONFORM TO OPSS 805 STANDARDS.
7. SILT FENCE MUST BE INSTALLED BEFORE COMMENCEMENT OF CONSTRUCTION AND IN ACCORDANCE WITH DETAIL. SILT FENCE CAN BE REMOVED AFTER LANDSCAPING IS COMPLETE.
8. SEDIMENTS MUST BE CLEARED AWAY WHEN THEY REACH HALF THE HEIGHT OF THE FENCE.

EROSION AND SEDIMENT CONTROLS DURING CONSTRUCTION.

THE CONTRACTOR SHALL IMPLEMENT BEST MANAGEMENT PRACTICES, TO PROVIDE FOR PROTECTION OF THE AREA DRAINAGE SYSTEM AND THE RECEIVING WATERCOURSE, DURING CONSTRUCTION ACTIVITIES. THE CONTRACTOR ACKNOWLEDGES THAT FAILURE TO IMPLEMENT APPROPRIATE EROSION AND SEDIMENT CONTROL MEASURES MAY BE SUBJECT TO PENALTIES IMPOSED BY ANY APPLICABLE REGULATORY AGENCY. DURING ALL CONSTRUCTION ACTIVITIES, EROSION AND SEDIMENTATION SHALL BE CONTROLLED BY THE FOLLOWING TECHNIQUES:

1. LIMITING THE EXTENT OF EXPOSED SOILS AT ANY GIVEN TIME.
2. RE-VEGETATION OF EXPOSED AREAS AS SOON AS POSSIBLE.
3. MINIMIZING THE AREA TO BE CLEARED AND DISRUPTION TO ADJACENT AREAS.
4. A SILT FENCE BARRIER (OPSD 219.110) TO BE INSTALLED AS SHOWN ON THIS DRAWING.
5. A VISUAL INSPECTION SHALL BE COMPLETED DAILY ON SEDIMENT CONTROL BARRIERS AND ANY DAMAGE REPAIRED IMMEDIATELY. CARE WILL BE TAKEN TO PREVENT DAMAGE DURING CONSTRUCTION OPERATIONS.
6. IN SOME CASES SOME BARRIERS MAY BE REMOVED TEMPORARILY TO ACCOMMODATE THE CONSTRUCTION OPERATIONS. THE ACTIVITY SHALL BE REINSTATED AT NIGHT WHEN CONSTRUCTION IS COMPLETED.
7. THE SEDIMENT CONTROL DEVICES WILL BE CLEANED OF ACCUMULATED SILT AS REQUIRED. THE DEPOSITS WILL BE DISPOSED OF AS PER THE REQUIREMENTS OF THE CONTRACT.
8. DURING THE COURSE OF PREVENTION IF THE ENGINEER BELIEVES THAT ADDITIONAL PREVENTION METHODS ARE REQUIRED TO CONTROL EROSION AND SEDIMENTATION, THE CONTRACTOR WILL INSTALL ADDITIONAL SILT FENCES OR OTHER DEVICES AS REQUIRED TO THE SATISFACTION OF THE ENGINEER.

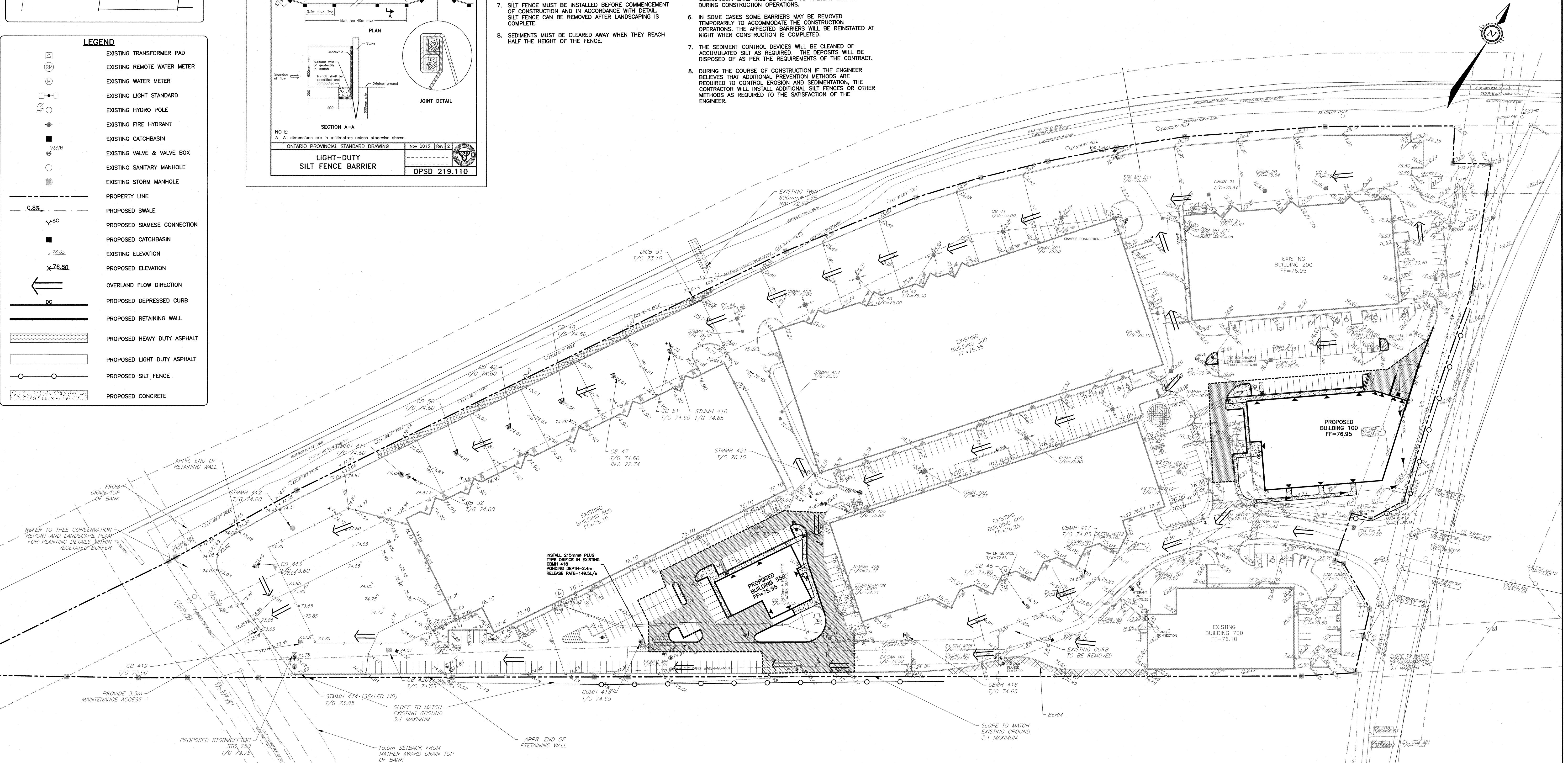
9. CONSTRUCTION AND MAINTENANCE REQUIREMENTS FOR EROSION AND SEDIMENT CONTROLS TO COMPLY WITH ONTARIO PROVINCIAL STANDARD SPECIFICATION (OPSS) OPSS 805, AND CITY OF OTTAWA SPECIFICATIONS.
10. EROSION AND SEDIMENT CONTROL MEASURES MAY BE MODIFIED ON-SITE AT THE DISCRETION OF THE CITY OF OTTAWA INSPECTOR OR THE MISSISSIPPI VALLEY CONSERVATION AUTHORITY CONTRACTOR RESPONSIBLE TO INSTALL MODIFICATIONS AS REQUIRED TO THE SATISFACTION OF THE APPROPRIATE AUTHORITIES.
11. IN ACCORDANCE WITH BEST MANAGEMENT PRACTICES FOR EROSION AND SEDIMENT CONTROL, GEOTECHNICAL SYSTEMS SILTSCREEN OR APPROVED EQUIVALENT IS TO BE PLACED INSIDE ALL STORM MANHOLE COVERS AND MANHOLES. INSPECTION AND MAINTENANCE SHALL BE IN ACCORDANCE AS PER MANUFACTURER'S RECOMMENDATIONS.

APPROVED

By Don Herweyer at 3:52 pm, May 30, 2019

DON HERWEYER, MCIP, RPP

**MANAGER, DEVELOPMENT REVIEW - SOUTH
PLANNING, INFRASTRUCTURE & ECONOMIC
DEVELOPMENT DEPARTMENT, CITY OF OTTAWA**



CAUTION
THE POSITION OF ALL POLE LINES,
CONDUITS, WATERMAINS, SEWERS AND OTHER
UNDERGROUND AND OVERGROUND UTILITIES
AND STRUCTURES IS NOT NECESSARILY
SHOWN ON THE CONTRACT DRAWINGS, AND
WHERE SHOWN, THE ACCURACY OF THE
POSITION OF SUCH UTILITIES AND
STRUCTURES IS NOT GUARANTEED. BEFORE
STARTING WORK, DETERMINE THE EXACT
LOCATION OF ALL SUCH UTILITIES AND
STRUCTURES AND ASSUME ALL LIABILITY FOR
DAMAGE TO THEM

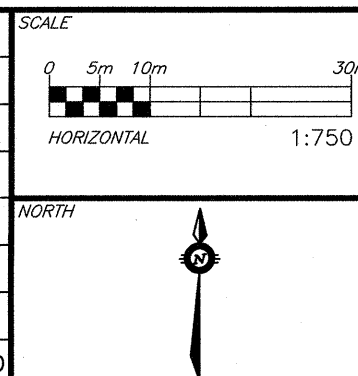
DAVID S. McROBIE ARCHITECTS INC.
66 QUEEN STREET
OTTAWA, ON. K1P 5C6
613.238.2072

PATERSON GROUP
154 COLONNADE ROAD
NEPEAN, ON. K2E 7J5
613.226.7381

JAMES B. LENNOX & ASSOCIATES INC.
3332 CARLING AVE
OTTAWA, ON. K2H 5A8
613.722.5168


ANNIS O'SULLIVAN VOLLEBEKK LTD.
14 CONCOURSE GATE, SUITE 500
NEPEAN, ON. K2E 7S6
613 727 0850

4	REVISED AS PER SITE PLAN	29/04/19	AE	AA	
3	REVISED AS PER CITY COMMENTS	23/04/19	AE	AA	
2	REVISED AS PER CITY COMMENTS	22/03/19	AE	AA	
1	SUBMITTED FOR SITE APPLICATION	17/12/18	AE	AA	
REV	REVISION DESCRIPTION	DATE	BY	APPROVED	



DESIGNED BY	
-------------	--

REVIEWED BY



CLIENT **CONTROLEX CORPORATION**
100-223 COLONNADE ROAD SOUTH
OTTAWA, ON. K2E 7K3
613.723.7490

exp Services Inc.
t: +1.613.688.1899 | f: +1.613.225.7333
2650 Queensview Drive, Unit 100
Ottawa, ON K2B 8H6
Canada
www.exp.com

• BUILDINGS • EARTH & ENVIRONMENT
• INDUSTRIAL • INFRASTRUCTURE

BASEPLAN	SAB
DESIGN	AA/AE
CHECKED	AA
CAD	AE
PROJECT MANAGER	AA
APPROVED	AA

3020 HAWTHORNE ROAD
BUILDING 100 AND 550
OTTAWA, ONTARIO.

EROSION AND SEDIMENT CONTROL PLAN

PROJECT No.	OTT-250557-A0
SURVEY	
DATE	DECEMBER 2018

FSC

PLAN # 13714