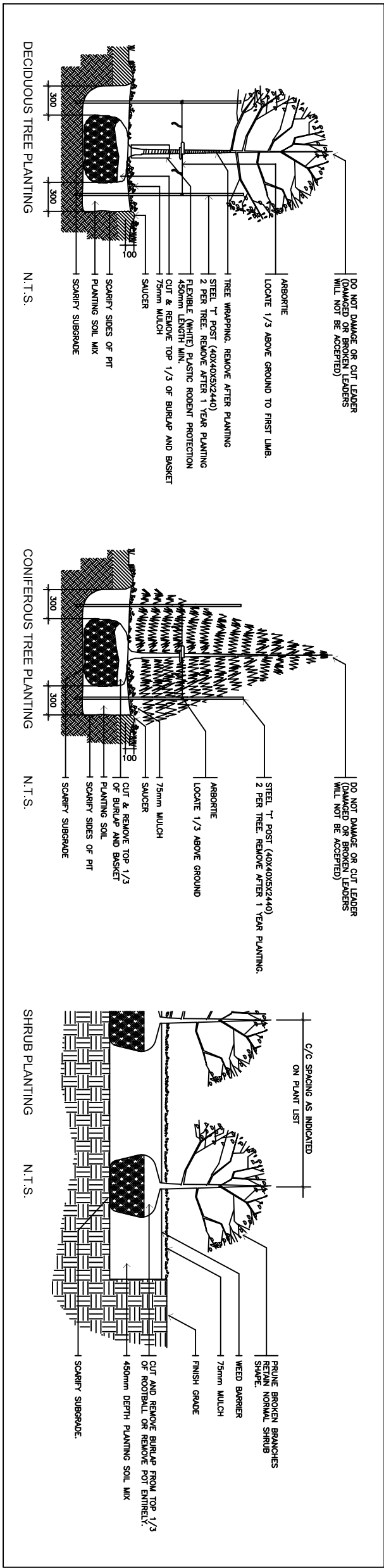
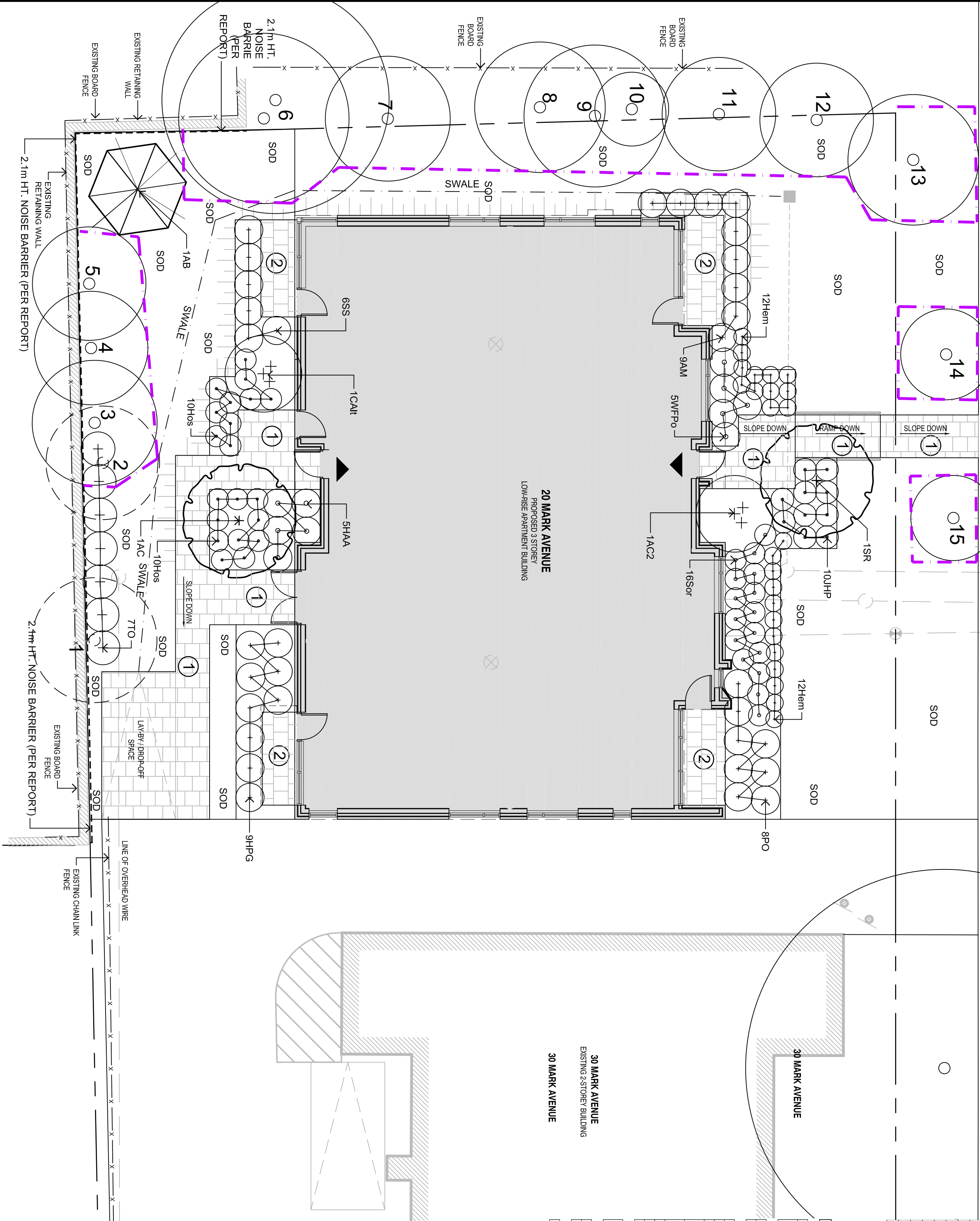


MARK AVENUE

EXISTING CONCRETE SIDEWALK



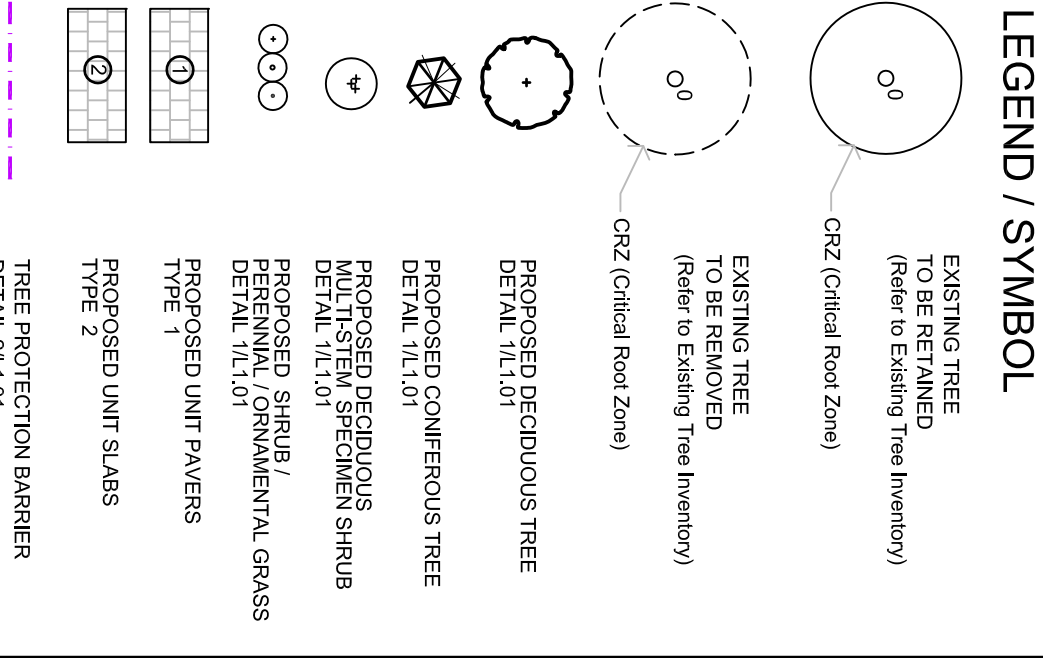
CODE	SPECIES	SIZE (diam cm)	CONDITION / TREATMENT / REMARKS
1	Manitoba Maple	27	poor / remove / hazardous
2	Manitoba Maple	20	poor / remove / hazardous
3	Manitoba Maple	22	fair / retain / protect
4	Manitoba Maple	20	fair / retain / protect
5	Manitoba Maple	20	fair / retain / protect
6	Manitoba Maple	20	fair / retain / protect
7	Manitoba Maple	22	good / retain / adjacent property
8	Norway Maple	23	good / retain / adjacent property
9	Norway Maple	25	good / retain / adjacent property
10	Norway Maple	13	good / retain / adjacent property
11	Norway Maple	25	good / retain / adjacent property
12	Norway Maple	17	fair / retain / protect
13	Norway Maple	23	fair / retain / City property
14	Norway Maple	23	fair / retain / City property
15	Bur Oak	15	good / retain / City property

PLANT MATERIAL SCHEDULE

CODE	BOTANICAL NAME	COMMON NAME	QTY.	SIZE	REMARKS
AC	AMELANCHIER CANADENSIS	SHADBLOW SERVICEBERRY	1	50cm cal	BBB, single stem
SR	SYRINGA RETICULATA VIVIP	IVORY SILK JAPANESE TREE LILAC	1	50cm cal	BBB, single stem
AB	ABIES BALSAWEA	BALSAM FIR	7	180 cm ht	BBB, 100cm o/c
TO	THUJA OCCIDENTALIS	EASTERN WHITE CEDAR	1	150 cm ht	BBB, 100cm o/c
DE	DECIDUOUS SHRUBS				
AC	AMELANCHIER CANADENSIS	DOGWY SERVICEBERRY	1	150cm ht	BBB, multi-stem
AM	ARONIA MELANOCARPA	BLACK CHOKERBERRY	9	50cm ht	BBB, multi-stem
CAH	CORNUS ALTERNIFOLIA	PACODA DOGWOOD	5	150cm ht	BBB, multi-stem
HA	HYDRANGEA ARBORESCENS	ANABELLE HYDRANGEA	5	50cm ht	BBB, multi-stem
HPG	HYDRANGEA PANICULATA	PEE GEE HYDRANGEA	9	50cm ht	BBB, multi-stem
GR	GRANDIFLORA	GOMMON UNDEBARK	6	50cm ht	BBB, multi-stem
PO	PODERANUS SORBIFOLIUS	FASE SPINER	6	50cm ht	BBB, multi-stem
SO	SORBARA SORBIFOLIA	POLKA WIGWAG	5	50cm ht	BBB, multi-stem
WPFO	WEIGELA FLORIDA POLKA	POLKA WIGWAG	5	50cm ht	BBB, multi-stem
SHRUBS					
JHP	JUNIPERUS HORIZONTALIS	COMPACT ANDORRA JUNIPER	10	50cm spr.	BBB, 100cm o/c
PER	PERENNIALS				
Hem	HEMIFOCALUS tymanoti	Hyperion DAYLILY	24	15 cm pot	plant 75cm o/c
Hos	HOSTA 'Big Daddy'	Big Daddy HOSTA	20	15 cm pot	plant 75cm o/c
GR	GRASSES				
IND	INDIAN GRASS	INDIAN GRASS	16	15 cm pot	plant 75cm o/c

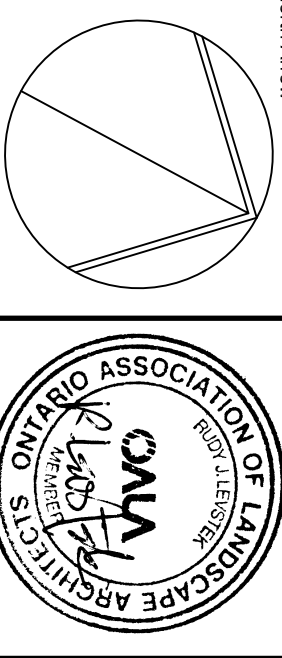


SITE LOCATION



NOT FOR CONSTRUCTION

NO.	DATE	REVISION
1.	MAY 17/18	ISSUE FOR REVIEW / COORDINATION
2.	MAY 24/18	ISSUE FOR REVIEW / COORDINATION
3.	JUNE 20/18	ISSUE FOR REVIEW / COORDINATION
4.	JULY 20/18	ISSUE FOR SPA
5.	AUG 20/18	PER CITY COMMENTS (1)
6.	FEB 28/19	PER CITY COMMENTS (2)



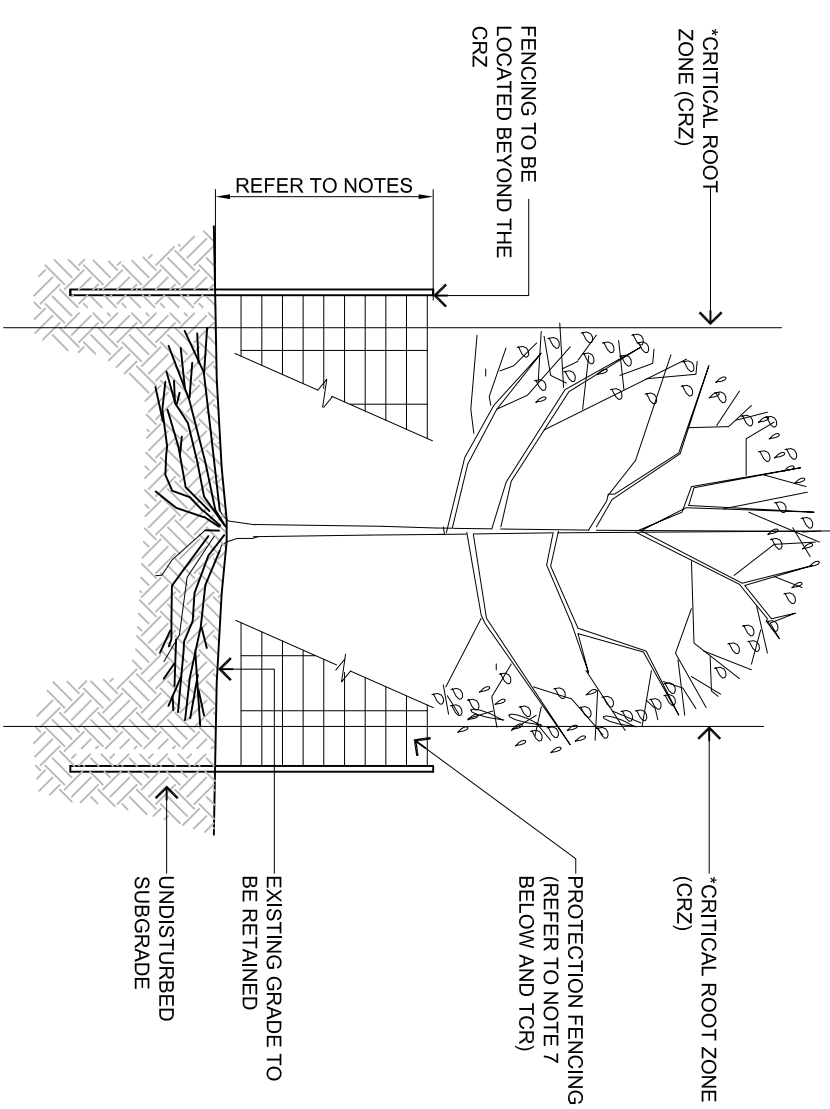
Contractor shall check and verify all dimensions of the site and report all errors and/or omissions to the Consultant. Do not scale Drawing. Copyright reserved. This Drawing is the exclusive property of the Consultant and shall not be used without consent.

LEVSTEK CONSULTANTS
LANDSCAPE ARCHITECTS
5873 Highway 7 West, Unit 101, Richmond Hill, Ontario L4B 3N2
Tel: 905.709.6133 Fax: 905.709.6134
Client: **MANOR PARK MANAGEMENT**
Project: **20 MARK AVENUE**

Drawing Title: **LANDSCAPE PLAN**
Drawn: **MGB** Date: **MAY 2018** Drawing No.: **L1.01**
Scale: **1:100** Project No.: **1143**

SCHEDULE OF EXISTING TREES
(Inventory conducted May 1, 2018)

CODE	SPECIES	SIZE (diam cm)	CONDITION / TREATMENT / REMARKS
1	Manitoba Maple	27	poor / remove / hazardous
2	Manitoba Maple	20	poor / remove / hazardous
3	Manitoba Maple	22	fair / retain / protect
4	Manitoba Maple	20	fair / retain / protect
5	Manitoba Maple	20	fair / retain / protect
6	Manitoba Maple	20	fair / retain / protect
7	Manitoba Maple	22	good / retain / adjacent property
8	Norway Maple	23	good / retain / adjacent property
9	Norway Maple	25	good / retain / adjacent property
10	Norway Maple	13	good / retain / adjacent property
11	Norway Maple	25	good / retain / adjacent property
12	Norway Maple	17	fair / retain / protect
13	Norway Maple	23	fair / retain / City property
14	Norway Maple	23	fair / retain / City property
15	Bur Oak	15	good / retain / City property



- NOTES:
1. THE CRITICAL ROOT ZONE (CRZ) IS ESTABLISHED AS BEING 10% OF THE DISTANCE FROM THE TRUNK OF TREE FOR EVERY CM OF TRUNK DBH. THE CRZ IS CALCULATED AS DBH x 10cm.
 2. THE AREA WITHIN THE PROTECTED FENCING SHALL REMAIN UNDISTURBED AND SHALL NOT BE WITH FENCING AS DETAIL.
 3. PRUNE BRANCHES TO REMOVE DAMAGED LIMBS. DO NOT DAMAGE LEAVES.
 4. CUTTING OF ROOTS OR CHANGING OF GRADIES AROUND EXISTING TREES TO BE PRESERVED.
 5. IF TREES ARE BEING ADVERSELY AFFECTED BY CONSTRUCTION, A WATERING AND FERTILIZING PROGRAM IS TO BE SETUP TO THE SATISFACTION OF THE CITY.
 6. AND/OR AROUND TREE PRESERVATION ZONES AS IDENTIFIED ON THE PLANS.
 7. TREE PROTECTION FENCING OPTIONS (TO BE APPROVED BY CITY):
 - .01 1.2m HT. MIN. SOLID PL-WOOD HOARDING MOUNTED ON WOOD POSTS, 2.4m o/c MIN.
 - .02 1.2m HT. MIN. SOLID PL-WOOD HOARDING MOUNTED ON WOOD POSTS, 2.4m o/c MIN.
 - .03 1.2m HT. MIN. HIGH VISIBILITY (INTERNATIONAL ORANGE) PLASTIC FABRIC (HIGH DENSITY POLYETHYLENE) MOUNTED ON WOOD FRAME w/ TOP AND BOTTOM WOOD RAILS.

APPROVED
By Jamesdo at 12:33 pm, May 28, 2019

DOUGLAS JAMES, MCIP, RPP
MANAGER, INFRASTRUCTURE REVIEW & ECONOMIC
DEVELOPMENT DEPARTMENT, CITY OF OTTAWA