

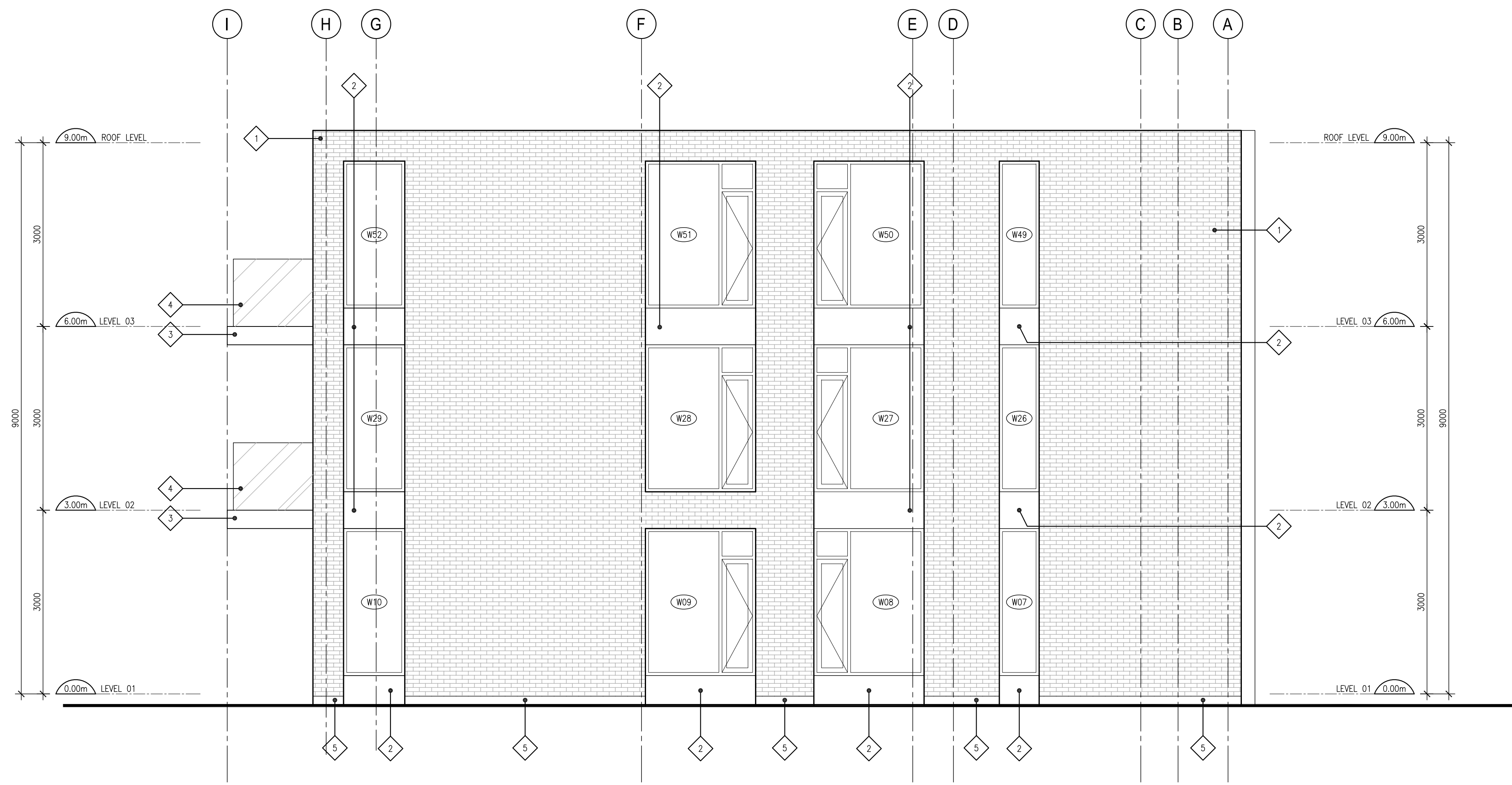
- CLADDING LEGEND**
- 1 BRICK
SUPPLIER:
PROFILE:
COLOUR:
 - 2 FIBRE CEMENT PANELS
SUPPLIER:
FINISH: DARK GREY
 - 3 PRE-FINISHED METAL CLADDING
FINISH: DARK GREY
 - 4 GLASS BALCONY GUARD
 - 5 PAVING
 - 6 ARCHITECTURAL CONCRETE

DJ

DOUGLAS JAMES, MCIP, RPP
MANAGER, DEVELOPMENT REVIEW - CENTRAL
PLANNING, INFRASTRUCTURE & ECONOMIC
DEVELOPMENT DEPARTMENT, CITY OF OTTAWA

APPROVED
By Jamesdo at 12:34 pm, May 28, 2019

1 WEST ELEVATION
A202 SCALE: 1:50



2 EAST ELEVATION
A202 SCALE: 1:50

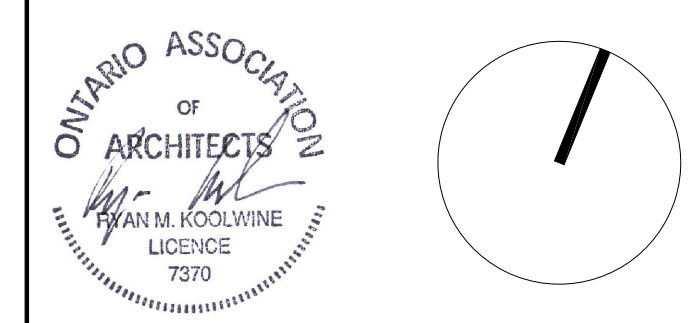
GENERAL ARCHITECTURAL NOTES:

1. This drawing is the property of the Architect and may not be reproduced or used without the expressed consent of the Architect.
2. Drawings are not to be scaled. The Contractor is responsible for checking and verifying all levels and dimensions and shall report all discrepancies to the Architect and obtain clarification prior to commencing work.
3. Upon notice in writing, the Architect will provide written/graphic clarification or supplementary information regarding the intent of the Contract Documents.
4. The Architectural drawings are to be read in conjunction with all other Contract Documents including Project Manuals and the Structural, Mechanical and Electrical Drawings.
5. Positions of exposed or finished Mechanical or Electrical devices, fittings and fixtures are indicated on the Architectural Drawings. Locations shown on the Architectural Drawings shall govern over Mechanical and Electrical Drawings. Mechanical and Electrical items not clearly located will be located as directed by the Architect.
6. These documents are not to be used for construction unless specifically noted for such purpose.

REVISION RECORD

REV.	ISSUANCE	DATE
5	REVISED FOR SITE PLAN CONTROL	2019-03-08
4	ISSUED FOR COORDINATION	2018-12-13
3	REVISED FOR SITE PLAN CONTROL	2018-12-05
2	ISSUED FOR COORDINATION	2018-07-05
1	ISSUED FOR COORDINATION	2018-02-27

ISSUE RECORD



20 MARK
20 Mark Avenue
Ottawa, ON

PROJ	SCALE	DRAWN	REVIEWED
1722.3	NOTED	DMP	RMK

BUILDING ELEVATIONS

A202

D07-12-16-0118