

PHASE 1 STORMWATER MANAGEMENT SUMMARY

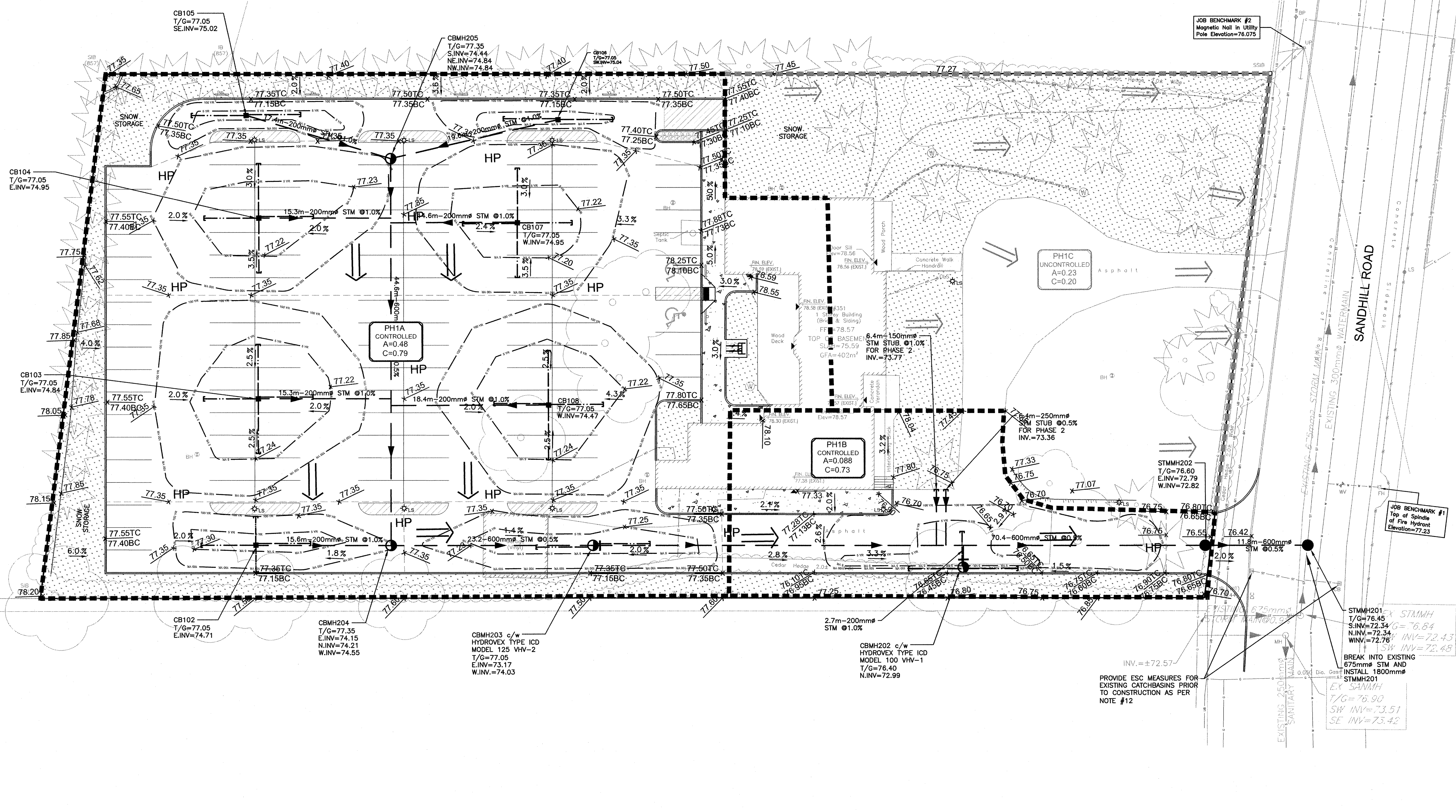
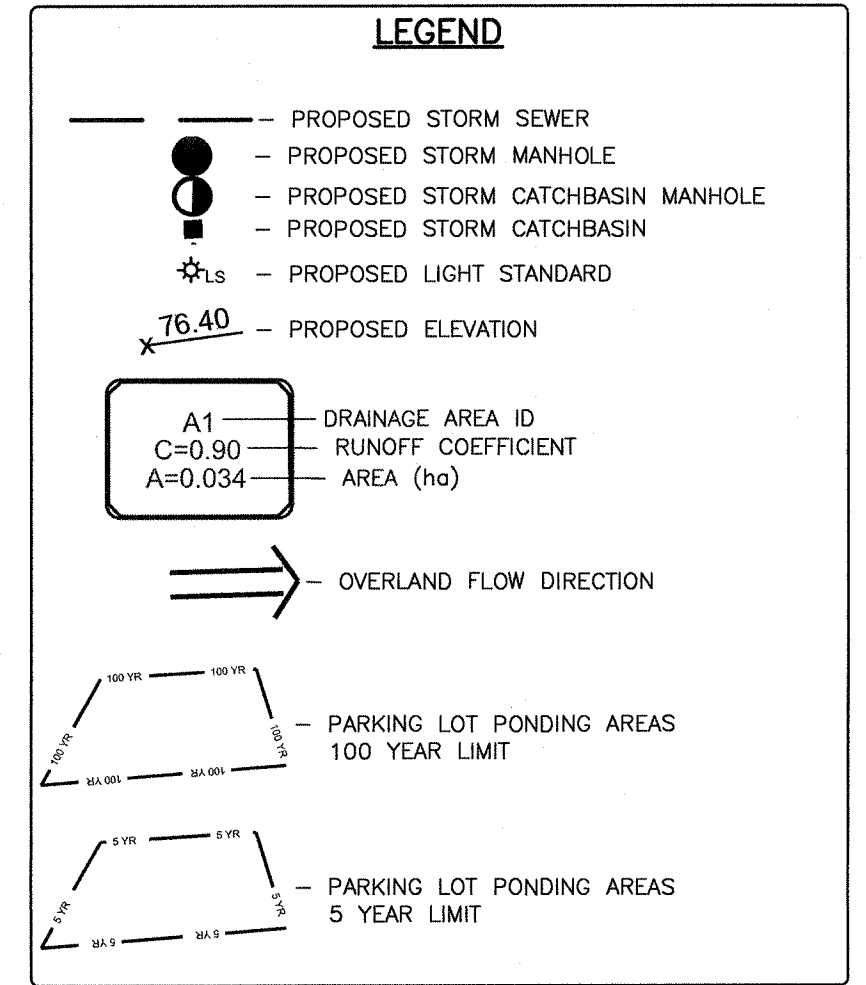
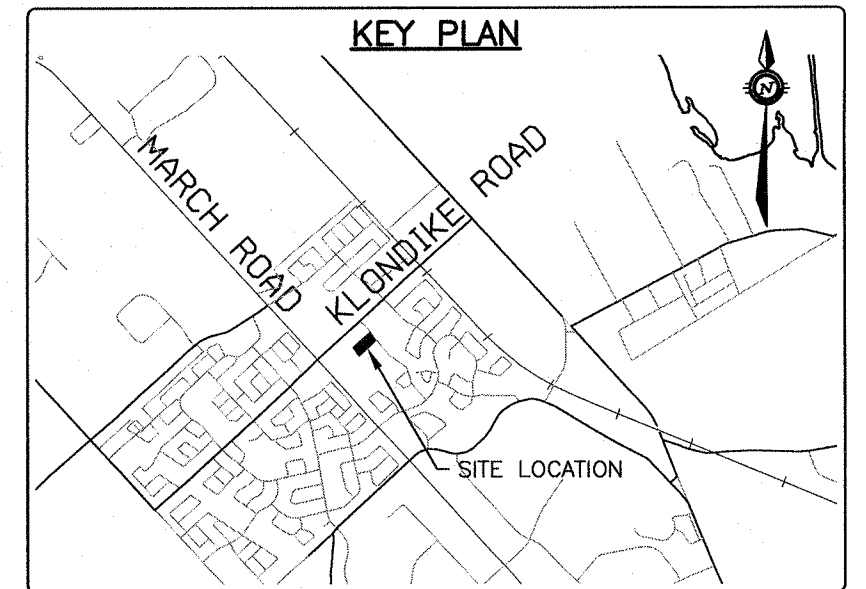
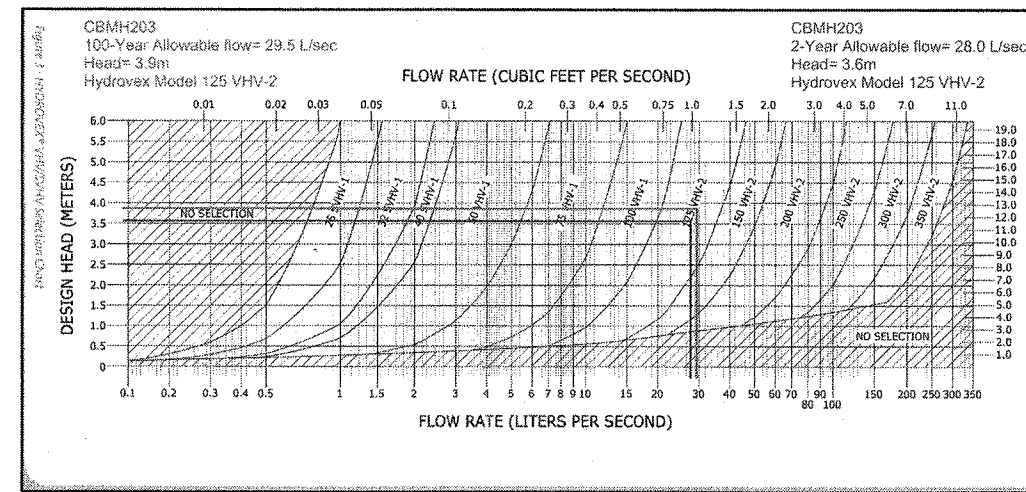
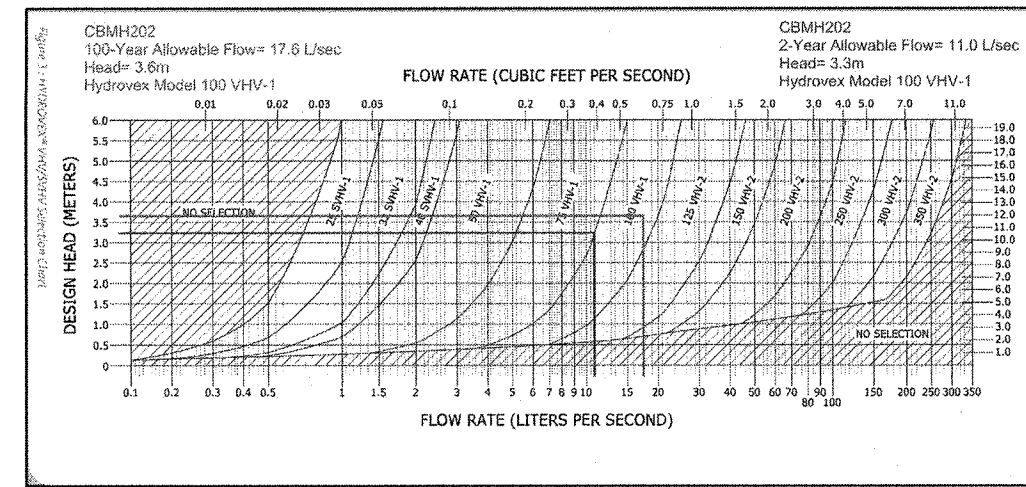
Area ID	Area (ha)	Runoff Coefficient 'C'	2 Year Release (L/s)	2 Year storage required (m <sup>3</sup> )	2 Year underground storage provided (m <sup>3</sup> )	100 Year Release (L/s)	100 Year storage required (m <sup>3</sup> )	100 Year surface storage provided (m <sup>3</sup> )
PH1A	0.486	0.79	28.0	34.3	35.1	29.5	166.3	193.5
PH1B	0.088	0.73	11.0	0.0	0.0	17.6	12.7	25.3
<b>TOTAL</b>	<b>0.57</b>							
<b>Totals:</b>			<b>39.0</b>	<b>34.3</b>	<b>35.1</b>	<b>47.1</b>	<b>180.9</b>	<b>218.8</b>
<b>Total Allowable Release (L/s):</b>			<b>48.74</b>					

PH1A - 100 YEAR SURFACE STORAGE VOLUMES

Ponding Location	Surface Area (m <sup>2</sup> )	Ponding Depth (m)	Volume (m <sup>3</sup> )
CB102	132	0.30	13.2
CB103	368.00	0.30	36.8
CB104	342.00	0.30	34.2
CB105	86.0	0.30	8.6
CB106	82.0	0.30	8.2
CB107	309.0	0.30	30.9
CB108	401.0	0.30	40.1
CBMH203	184	0.35	21.5
<b>Total Volume</b>			<b>193.5</b>

PH1B - 100 YEAR SURFACE STORAGE VOLUMES

Ponding Location	Surface Area (m <sup>2</sup> )	Ponding Depth (m)	Volume (m <sup>3</sup> )
CBMH202	217	0.35	25.3
<b>Total Volume</b>			<b>25.3</b>



**CAUTION**  
THE POSITION OF ALL POLE LINES, CONDUITS, WATERMANS, SEWERS AND OTHER UNDERGROUND AND OVERGROUND UTILITIES AND STRUCTURES IS NOT NECESSARILY SHOWN ON THE CONTRACT DRAWINGS, AND WHERE SHOWN, THE ACCURACY OF THE POSITION OF SUCH UTILITIES AND STRUCTURES IS NOT GUARANTEED. BEFORE STARTING WORK, DETERMINE THE EXACT LOCATION OF ALL SUCH UTILITIES AND STRUCTURES AND ASSUME ALL LIABILITY FOR DAMAGE TO THEM.

NO.	REVISION DESCRIPTION	DATE	BY	APPD
6	REMOVED RETAINING WALL AT SOUTH PROPERTY LINE	24/05/19	AE	AA
5	REVISED AS PER CITY COMMENTS	16/04/19	AE	AA
4	REVISED AS PER CITY COMMENTS	19/02/19	AE	AA
3	REVISED AS PER CITY COMMENTS	02/11/18	AE	AA
2	ISSUED FOR SITE PLAN APPROVAL	29/06/18	AE	AA
1	ISSUED FOR SITE PLAN APPROVAL	13/09/17	ML	AA

SCALE: 1:250  
HORIZONTAL

DESIGNED BY: M.A. ANSARI  
REVIEWED BY: M.A. ANSARI  
CLIENT: KANATA MUSLIM ASSOCIATION  
832 MARCH ROAD, OTTAWA, ON.  
K2W 0C9  
613.973.5000

PROJECT: KMA MOSQUE AND COMMUNITY CENTRE  
351 SANDHILL ROAD, OTTAWA, ON

FILE: STORMWATER MANAGEMENT PLAN PHASE 1

PROJECT No.: OTT-00238504-AD  
SURVEY: F M & W  
DATE: 2016-12-09  
DRAWING No.: SWM-1

exp. BUILDINGS • EARTH & ENVIRONMENT • ENERGY • INDUSTRIAL • INFRASTRUCTURE • SUSTAINABILITY

PROFESSIONAL ENGINEER  
M.A. ANSARI  
24/5/2019  
PROVINCE OF ONTARIO

PROJECT No.: OTT-00238504-AD  
SURVEY: F M & W  
DATE: 2016-12-09  
DRAWING No.: SWM-1