

I REQUIRE THIS PLAN TO BE DEPOSITED UNDER THE LAND TITLES ACT.
DATE: May 21, 2019

Richard R. Gauthier
RICHARD R. GAUTHIER
ONTARIO LAND SURVEYOR

PLAN 4R-31959
RECEIVED AND DEPOSITED
DATE: May 23, 2019

C. Holloway
REPRESENTATIVE FOR
LAND REGISTRAR FOR THE
LAND TITLES DIVISION OF
OTTAWA-CARLETON NO. 4.

SCHEDULE

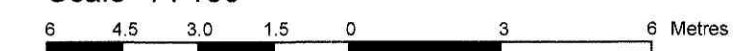
PART	LOT	PLAN	PIN
1	All of 46 South Daly Avenue	6	All of 04212-0142
2	Part of 45 South Daly Avenue		Part of 04212-0141
3			

STRATA PLAN OF SURVEY OF LOT 46 and PART of LOT 45 (South Daly Avenue)

REGISTERED PLAN 6 CITY OF OTTAWA

Surveyed by Annis, O'Sullivan, Vollebakk Ltd.

Scale 1:150



Metric

DISTANCES AND COORDINATES SHOWN ON THIS PLAN
ARE IN METRES AND CAN BE CONVERTED TO FEET BY
DIVIDING BY 0.3048.

Surveyor's Certificate

- I CERTIFY THAT:
- This survey and plan are correct and in accordance with the Surveys Act, the Surveyors Act and the Land Titles Act and the regulations made under them.
 - The survey was completed on the 13th day of March, 2018.

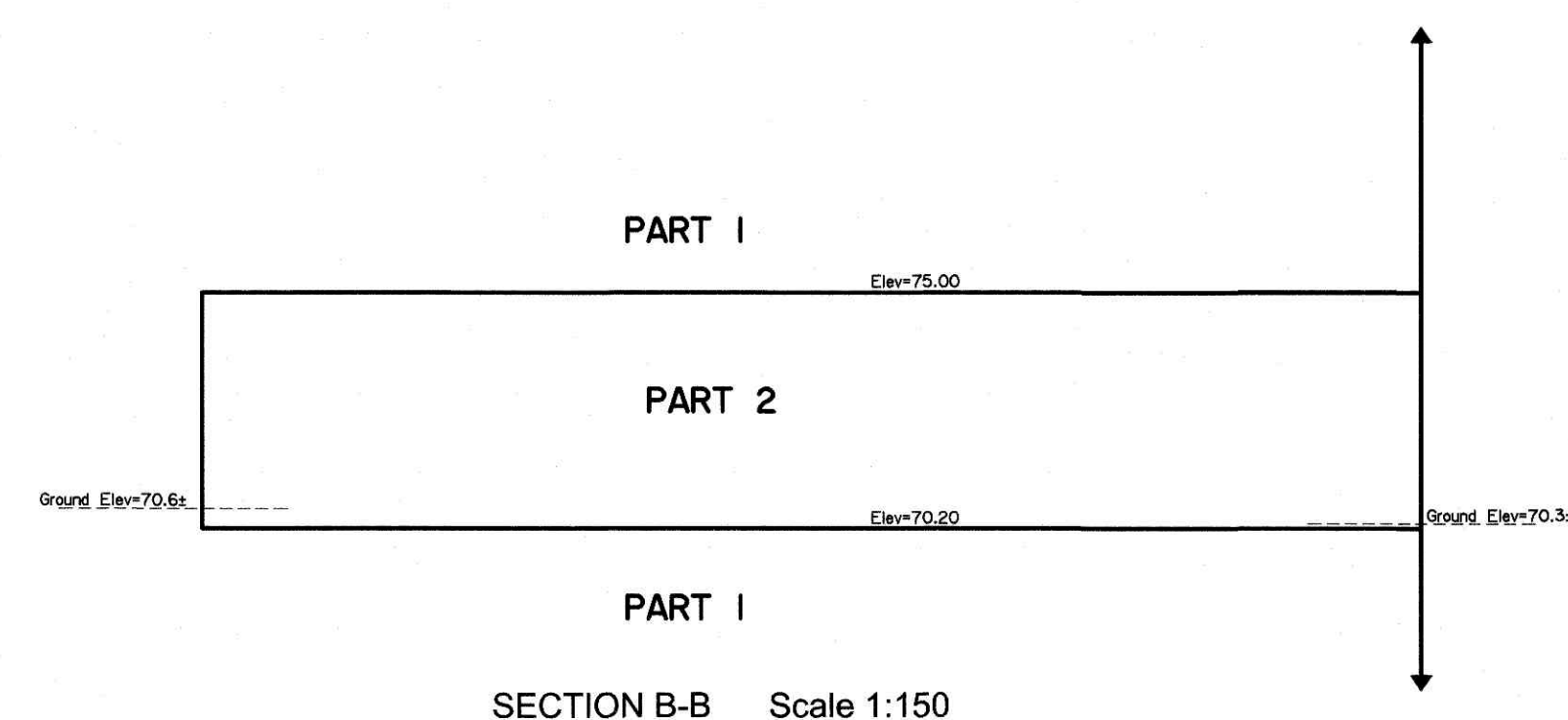
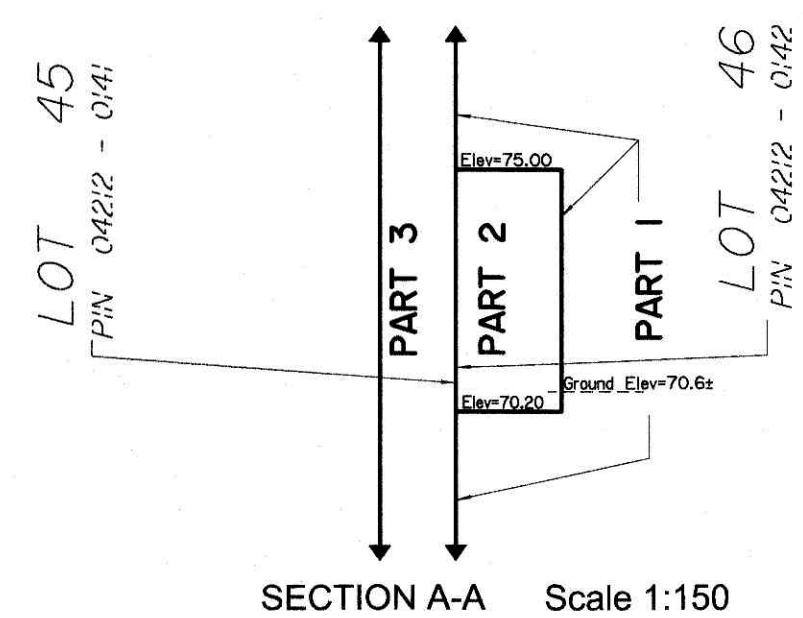
April 29, 2019
Date

Richard R. Gauthier
Richard R. Gauthier
Ontario Land Surveyor

Notes & Legend

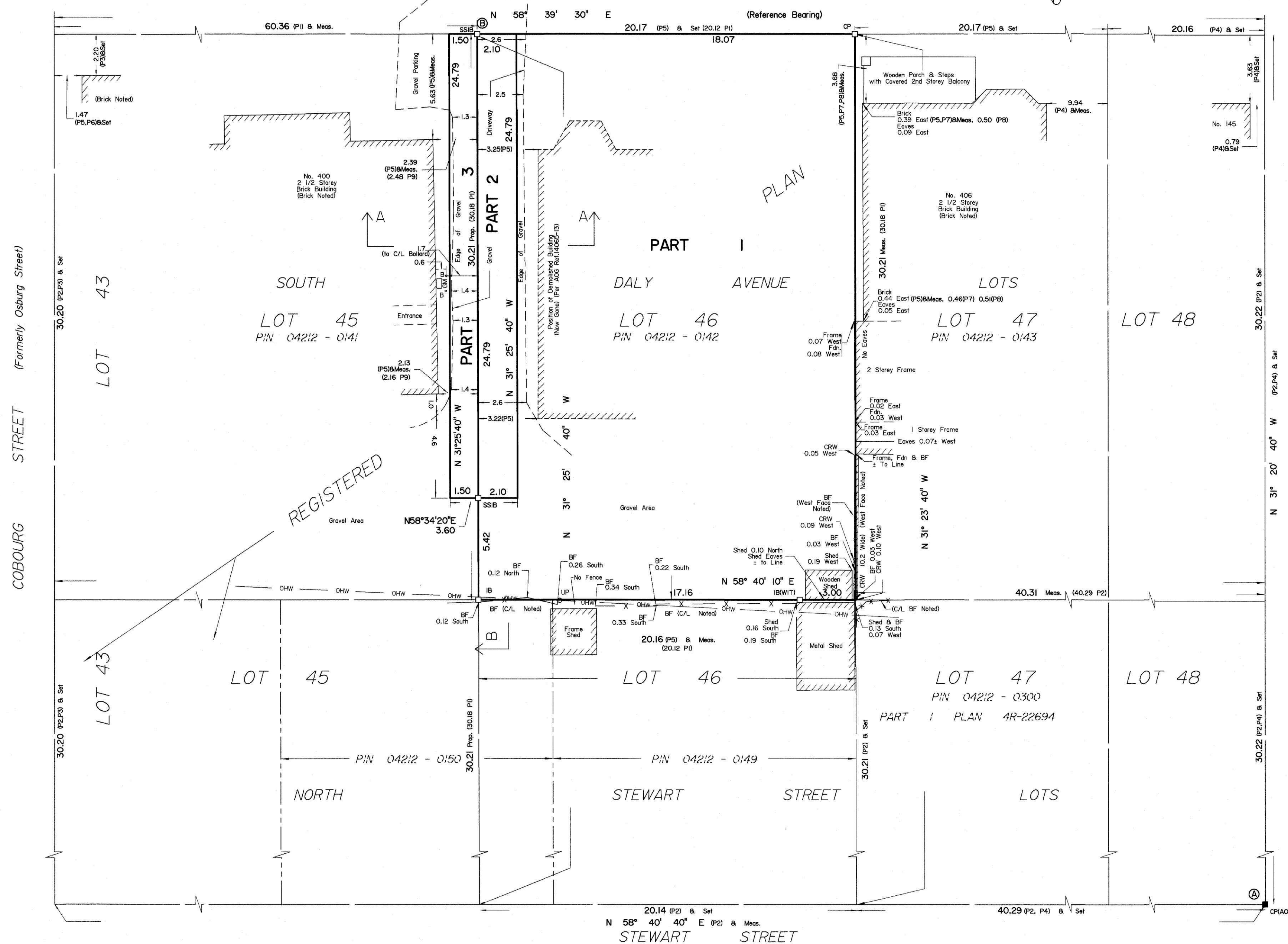
Denotes	
—□—	Survey Monument Planted
—■—	Survey Monument Found
SSB	Standard Iron Bar
SSIB	Short Standard Iron Bar
IB	Iron Bar
CP	Concrete Pin
(WIT)	Witness
(AOC)	Annis, O'Sullivan, Vollebakk Ltd.
Meas.	Measured
(P1)	Registered Plan 6
(P2)	Plan 4R-22694
(P3)	(AOC) Plan dated April 14, 1989
(P4)	(AOC) Plan dated February 5, 1999
(P5)	(AOC) Plan & Field Notes dated November 18, 2013 (Ref. 14065-13)
(P6)	(AOC) Plan dated February 5, 2014
(P7)	(1283) Plan dated April 30, 1991
(P8)	(1152) Plan dated March 28, 1973
(P9)	(857) Notes dated August 28, 1980
o	Bollard
oP	Utility Pole
GM	Gas Meter
BF	Board Fence
CLF	Chain Link Fence
CL	Centreline
Prop.	Proportioned
Fdn.	Foundation
—	Overhead Wires

- See Section 1 for Vertical Limits
- See Diagram 1 for Horizontal Limits
- Downwards Without Limit
- Upwards Without Limit



DALY AVENUE
PIN 04212 - 0264

DALY AVENUE (Formerly Daily Street)
PIN 04212 - 0264



Distances shown on this plan are ground distances and can be converted to grid distances by multiplying by the combined scale factor of 0.999940.

Bearings are grid, derived from Can-Net 2016 Real Time Network GPS observations on reference points A and B, having a bearing of N76°22'30"W shown hereon, and are referenced to Specified Control Points 01919680105 and 019198434761, MTM Zone 9 (76°30' West Longitude) NAD-83 (original).

For bearing comparisons, a rotation of 0°00'50" counter-clockwise was applied to bearings on plan (P2).

Coordinates are derived from Can-Net 2016 Real Time Network GPS observations referenced to Specified Control Points 01919680105 and 019198434761, MTM Zone 9 (76°30' West Longitude) NAD-83 (original).

Coordinate values are to urban accuracy in accordance with O. Reg. 216/11.

01919680105	Northing	5024915.16	Easting	373971.85
019198434761	Northing	5036178.12	Easting	372436.11
Point A	Northing	5032660.59	Easting	369363.27
Point B	Northing	5032680.74	Easting	369280.15

Caution: Coordinates cannot, in themselves, be used to re-establish corners or boundaries shown on this plan.

Parts 1 and 2 are limited vertically.

BENCHMARK NOTE

Elevations are geodetic, referred to City of Ottawa Vertical Control Monument OTT-70 having an elevation of 71.06 metres.