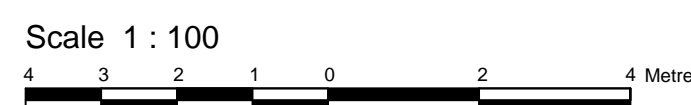


SECTION A-A

TOPOGRAPHICAL PLAN OF
 PART OF LOT 53 and ALL OF LOT 54
 (South Albert Street)
 PART OF LOT 53 and ALL OF LOT 54
 (North Slater Street)
 REGISTERED PLAN 3922
 CITY OF OTTAWA

Prepared by Annis, O'Sullivan, Vollebek Ltd.
 Field Work Completed



Metric
 DISTANCES SHOWN ON THIS PLAN ARE IN METRES AND
 CAN BE CONVERTED TO FEET BY DIVIDING BY 0.3048

ELEVATION NOTES
 1. Elevations shown are geodetic and are referred to the CGVD28 geodetic datum.
 2. It is the responsibility of the user of this information to verify that the job benchmark has not been altered or disturbed and that its relative elevation and description agrees with the information shown on this drawing.

UTILITY NOTES
 1. This drawing cannot be accepted as acknowledging all of the utilities and it will be the responsibility of the user to contact the respective utility authorities for confirmation.
 2. Only visible surface utilities were located.
 3. A field location of underground plant by the pertinent utility authority is mandatory before any work involving breaking ground, probing, excavating etc.

X:\2018\18153-19\18153-19.dwg, 12/20/2018 2:46:41 PM, DWG, 11, 100%