

IT IS THE RESPONSIBILITY OF THE APPROPRIATE CONTRACTOR TO CHECK AND VERIFY ALL DIMENSIONS ON SITE AND TO REPORT ALL ERRORS AND/OR OMISSIONS TO THE ARCHITECT.
 ALL CONTRACTORS MUST COMPLY WITH ALL PERTINENT CODES AND BY-LAWS.
 THIS DRAWING MAY NOT BE USED FOR CONSTRUCTION UNTIL SIGNED BY THE ARCHITECT.
 DO NOT SCALE DRAWINGS.
 COPYRIGHT RESERVED.

NOTATION SYMBOLS:

- (N) INDICATES DRAWING NOTES, LISTED ON EACH SHEET.
- (A) INDICATES ASSEMBLY TYPE; REFER TO TYPICAL ASSEMBLIES SCHEDULE.
- (W) INDICATES WINDOW TYPE; REFER TO WINDOW ELEVATIONS AND DETAILS ON A800 SERIES.
- (D) INDICATES DOOR TYPE; REFER TO DOOR SCHEDULE AND DETAILS ON A900 SERIES.
- (-)- DETAIL NUMBER
- (-)- TITLE
- (-)- SCIT
- (-)- DETAIL REFERENCE PAGE
- (-)- DETAIL CROSS REFERENCE PAGE

No.	DESCRIPTION	DATE
1	ISSUED FOR SITE PLAN CONTROL	Apr. 01, 19
2	ISSUED FOR CONSULTANTS REVIEW	Feb. 18, 19
3	ISSUED FOR UDRP	Dec. 21, 18

REVISIONS:

ARCHITECT SEAL:	NORTH ARROW:
SEAL DATE: STAMP DATE	

CLIENT:
88 Albert Street Holdings Inc.
 88 Albert Street, Ottawa Ontario K1P 5E9

ARCHITECT:
rla/architecture
 roderick lahey architect inc.
 56 beech street, ottawa, ontario K1S 3J6
 t. 613.724.9932 f. 613.724.1209 rlaarchitecture.ca

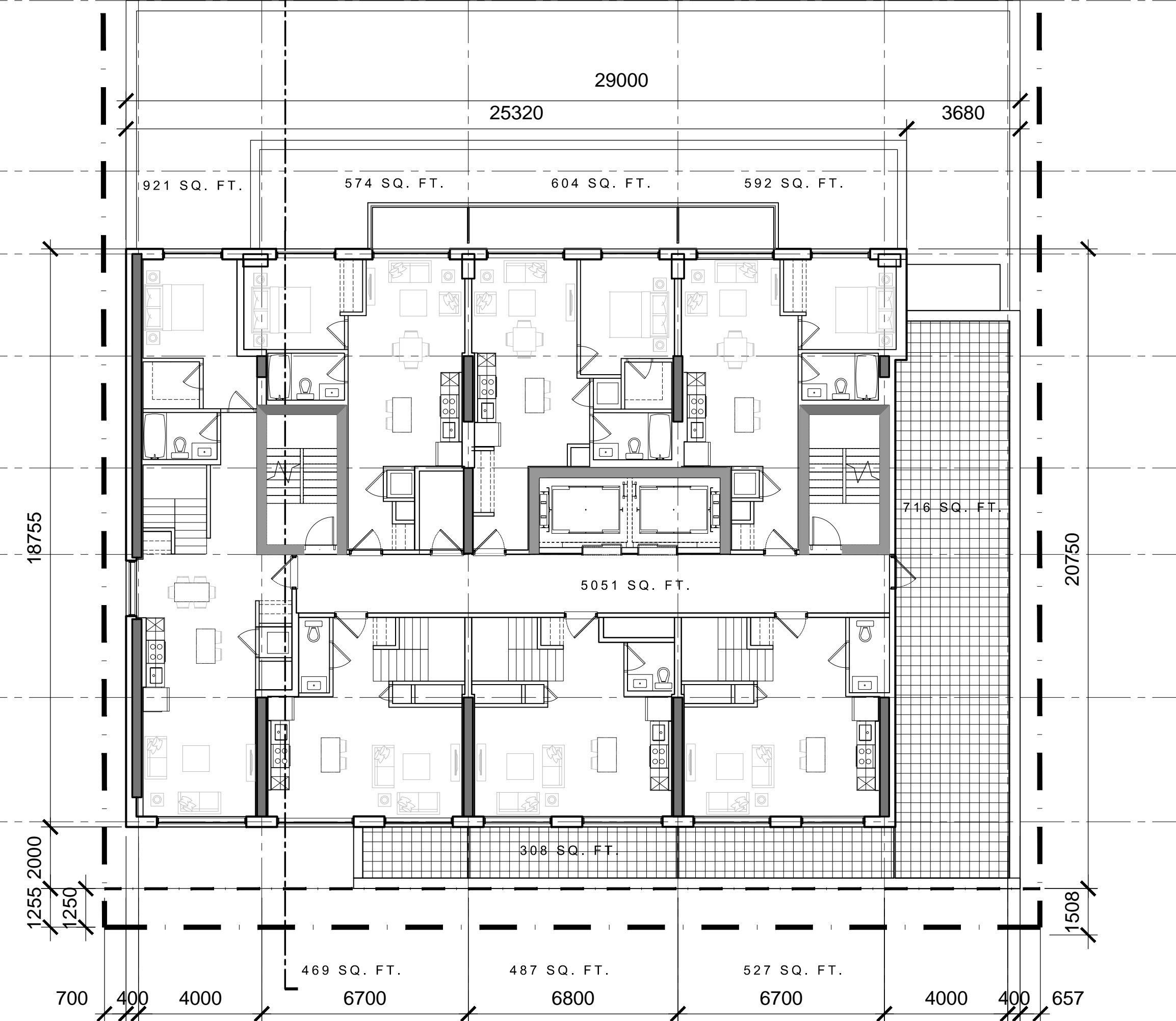
PROJECT TITLE:
81 SLATER STREET
 OTTAWA ONTARIO

SHEET TITLE:
FLOOR PLANS

DRAWN: T.Z.	CHECKED: R.V.
SCALE: 1:125	SHEET No.
PROJECT No. 1828	A-04



EXISTING 12 STOREY HOTEL
 88 ALBERT STREET



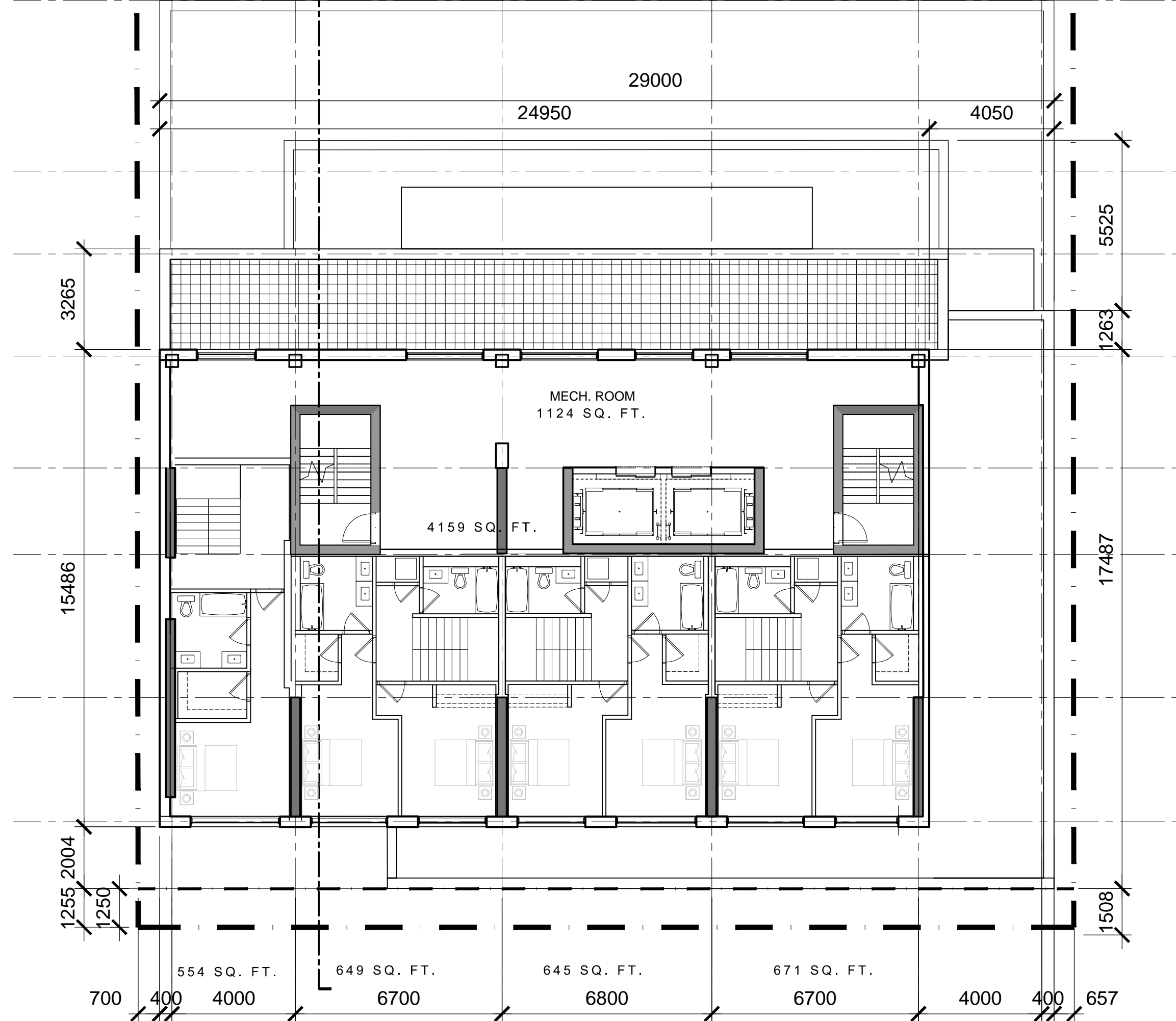
24th FLOOR

Decks = 95 m²
 Patios = 18 m²

BUILDING FOOTPRINT AREA
 5,050 sq. ft.
 Zoning GFA AREA
 3,762 sq. ft.



EXISTING 12 STOREY HOTEL
 88 ALBERT STREET



Mech. FLOOR

BUILDING FOOTPRINT AREA
 4,159 sq. ft.
 Zoning GFA AREA
 2,352 sq. ft.