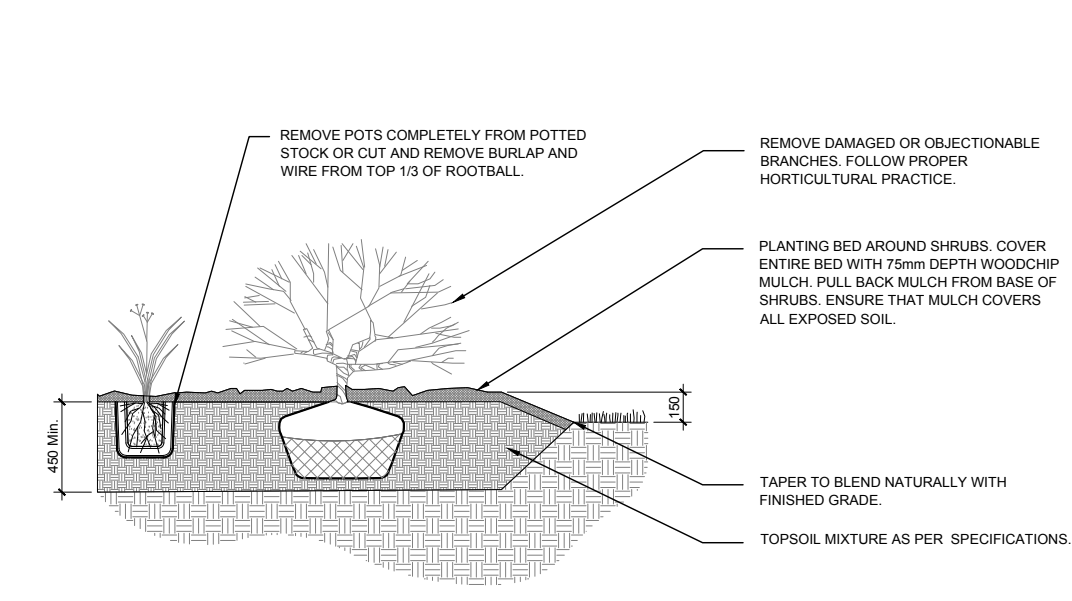
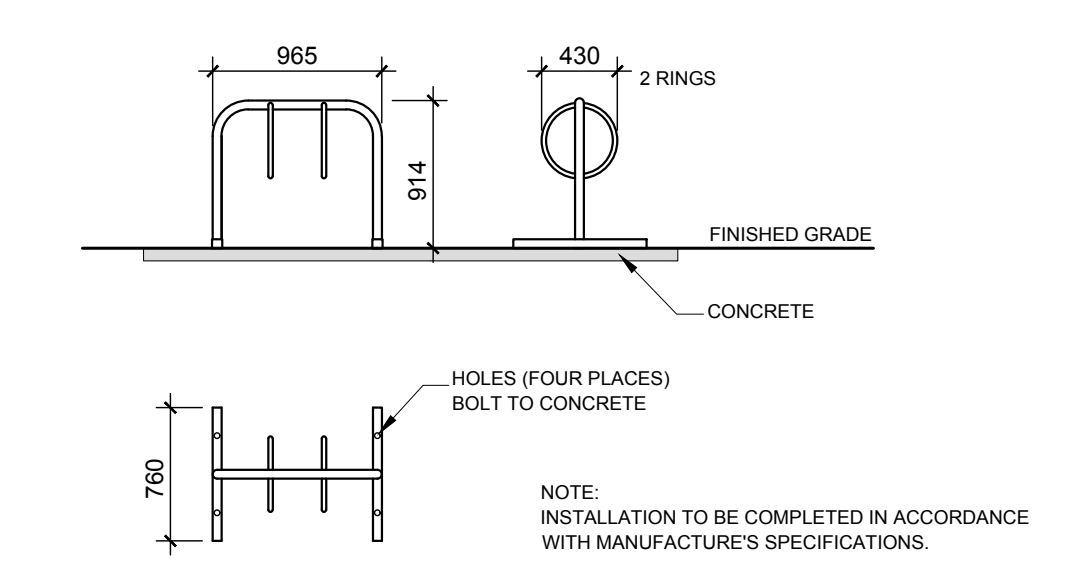


1 LANDSCAPE PLAN
L.1 1:750



2 SHRUB / ORNAMENTAL GRASS PLANTING
L.1 SCALE: NTS



3 TWO (2) RING BIKE RACK ON CONCRETE SURFACE
L.1 SCALE: NTS

PROPOSED PLANT LIST						
KEY	QTY.	BOTANICAL NAME	COMMON NAME	SIZE	CONDITION	PLANTING DENSITY
SHRUBS						
AW	28	Spiraea bumalda 'Anthony Waterer'	Anthony Waterer Spirea	600mm Ht.	Potted	1500 mm o.c
BD	24	Juniperus horizontalis 'Compact Andorra'	Compact Andorra Juniper	600mm spr.	Potted	1000 mm o.c
BR	6	Physocarpus 'Diablo'	Diablo Ninebark	800mm Ht.	Potted	1500 mm o.c
FS	38	Rhus aromatica	Fragrant Sumac	600mm ht.	Potted	1000 mm o.c
PM	8	Pinus mugo 'Pumilio'	Dwarf Mugo Pine	600mm ht.	Potted	1000 mm o.c.
PO	18	Potentilla fruticosa 'Goldfinger'	Goldfinger Cinquefoil	600mm Ht.	Potted	800 mm o.c
RR	36	Rosa rugosa	Rugosa Rose	800mm ht.	Potted	1000 mm o.c.
SJ	20	Hypericum kalmianum	St. John's Wort	600mm ht.	Potted	1000mm o.c.
SS	16	Sorbaria sorbifolia	False Spirea	600mm ht.	Potted	1200mm o.c.
PERENNIALS / ORNAMENTAL GRASSES						
DL	28	Hemerocallis 'Stella D'Oro'	Stella D'Oro Daylily	150mm pot	Potted	400 mm o.c
KF	32	Calamagrostis 'Karl Foerster'	Karl Foerster Grass	250mm pot	Potted	800 mm o.c.

EXISTING TREE LIST						
KEY	QTY.	BOTANICAL NAME	COMMON NAME	SIZE	CONDITION	
TREES						
AM	3	Acer x freemanii 'Armstrong'	Armstrong Maple	100mm DBH	TBD	
GT	2	Gleditsia triacanthos	Honey Locust	100mm DBH	TBD	

CLIENT:

Controlex Corporation
100 - 223 Colonnade Road,
Ottawa, ON K2E 7K3
613-723-7490

ARCHITECTS:

David S. McRobie Architects Inc.
66 Queen Street,
Ottawa, ON K1P 5G2
613-238-2072

CIVIL ENGINEERS:

EXP SERVICES INC.
2650 Queensview Drive,
Ottawa, ON K2B 8H6
613-228-9840

GEOTECHNICAL ENGINEERS:

PATERSON GROUP
154 Colonnade Road,
Nepean, ON K2E 7J5
613-228-7381

SURVEYORS:

Annis O'Sullivan Vollebekk Ltd.
14 Concourse Gate, Suite 500
Nepean, ON K2E 7S6
613-727-0850

LEGEND

EXISTING TREE TO REMAIN

GROUP OF EXISTING SHRUBS TO REMAIN

EXISTING TREE TO BE REMOVED

PROPOSED SHRUBS / ORNAMENTAL GRASSES/ PERENNIALS

PROPOSED SOD

PROPOSED CONCRETE

PROPOSED BARK MULCH

GENERAL NOTES

1. It is the responsibility of the appropriate contractor or official to report any errors, omissions or discrepancies on this plan with actual site conditions to the Landscape Architect before proceeding with construction.

2. The contractor is to notify all utility companies and authorities prior to any excavation and ascertain locations of underground services.

3. The contractor is to reinstate all areas and items damaged as a result of construction activity.

4. The contractor is to comply with all pertinent codes and by-laws.

5. The contractor is to maintain a positive surface run-off throughout the entire construction period.

6. The Landscape Architect is not responsible for subsurface conditions.

7. The contractor is to identify all existing trees to remain on site with the Landscape Architect prior to construction.

8. The contractor is to stake the proposed location of all plant material in conjunction with the Landscape Architect prior to excavation.

3
REVISED PER CITY COMMENTS
04/26/2019

2
REVISED PER CITY COMMENTS
03/26/2019

1
ISSUED FOR SITE PLAN APPLICATION
12/17/2018

NO. ISSUE & REVISIONS DATE

SEAL

PROFESSIONAL LANDSCAPE ARCHITECT
JAMES B. LENNOX
MEMBER
ONTARIO SOCIETY OF LANDSCAPE ARCHITECTS

PROJECT NORTH

↑

JAMES B. LENNOX & ASSOCIATES INC.
LANDSCAPE ARCHITECTS
3332 CARLING AVE. OTTAWA, ONTARIO K2H 5A8
Tel. (613) 722-5168 Fax. 1(866) 343-3942

HAWTHORNE
COMMERCIAL CENTRE
BUILDINGS 100 AND 550
3020 HAWTHORNE ROAD, OTTAWA

DRAWING
LANDSCAPE PLAN

Do not scale. Refer any dimensional errors and/or possible trade interference/conflict to the architects for clarification prior to commencement of the work.
The conditions of the contract apply.

SCALE — 1:750
DRAWN — ML
CHECKED — JL
PLOT DATE —

DRAWING NO.
L.1
REVISION NO. 3

D07-12-18-0193

#13714