

**ROOF PLAN SUMMARY**

Roof Drain No.	Type of Control Device	Ponding Depth (mm)	Ponding Area (m <sup>2</sup> )	Available Ponding Volume (m <sup>3</sup> )	Required Ponding Volume (m <sup>3</sup> )	Weir Position	Discharge Rate Per Drain (L/sec)
RD1	Watts Accutrol	150	252	13	11	1/2 Open	1.26
RD2	Watts Accutrol	150	320	16	14	3/4 Open	1.58
RD3	Watts Accutrol	150	247	12	10	3/4 Open	1.58
RD4	Watts Accutrol	150	257	13	10	3/4 Open	1.58
RD5	Watts Accutrol	150	37	2	2	Full	1.89
RD6	Watts Accutrol	150	37	2	2	Full	1.89
<b>Total</b>			<b>1150</b>	<b>58</b>	<b>49</b>		<b>9.78</b>

**PHASE 2 STORMWATER MANAGEMENT SUMMARY**

Area ID	Area (ha)	Runoff Coefficient 'C'	2 Year Release (L/s)	2 Year storage required (m <sup>3</sup> )	2 Year underground storage provided (m <sup>3</sup> )	100 Year Release (L/s)	100 Year storage required (m <sup>3</sup> )	100 Year surface storage provided (m <sup>3</sup> )
PH2A	0.498	0.78	28	35.1	35.1	29.5	173.3	193.5
PH2B	0.118	0.77	15.6	0	0	17.6	24.9	25.3
PH2C	0.145	0.9	7	13.9	58	9.8	49.1	58
PH2D	0.045	0.46	3.5	0	0	10.2	0	0
<b>TOTAL</b>	<b>0.81</b>							
<b>Totals:</b>			<b>54.2</b>	<b>49</b>	<b>92.1</b>	<b>67.1</b>	<b>246.8</b>	<b>275.8</b>
<b>Total Allowable Release L/s</b>			<b>68.85</b>					

**PH2A - 100 YEAR SURFACE STORAGE VOLUMES**

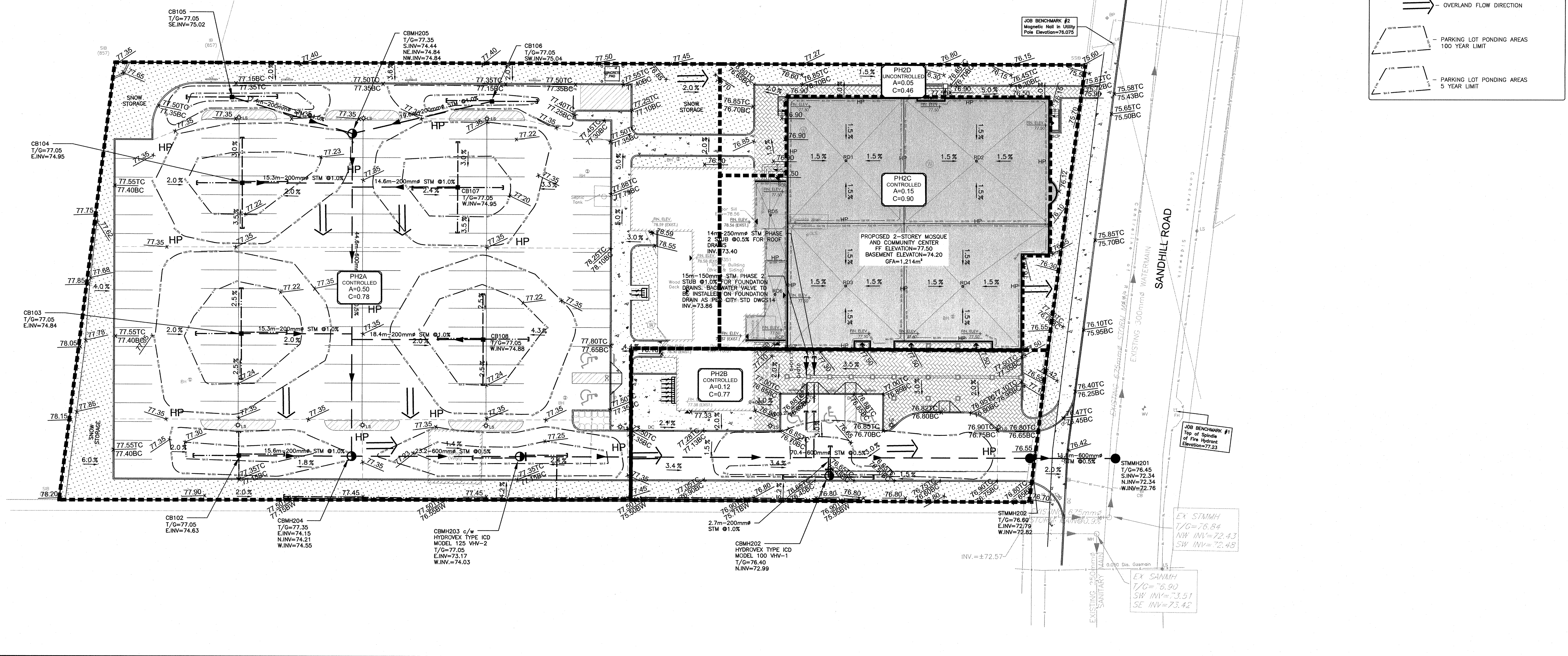
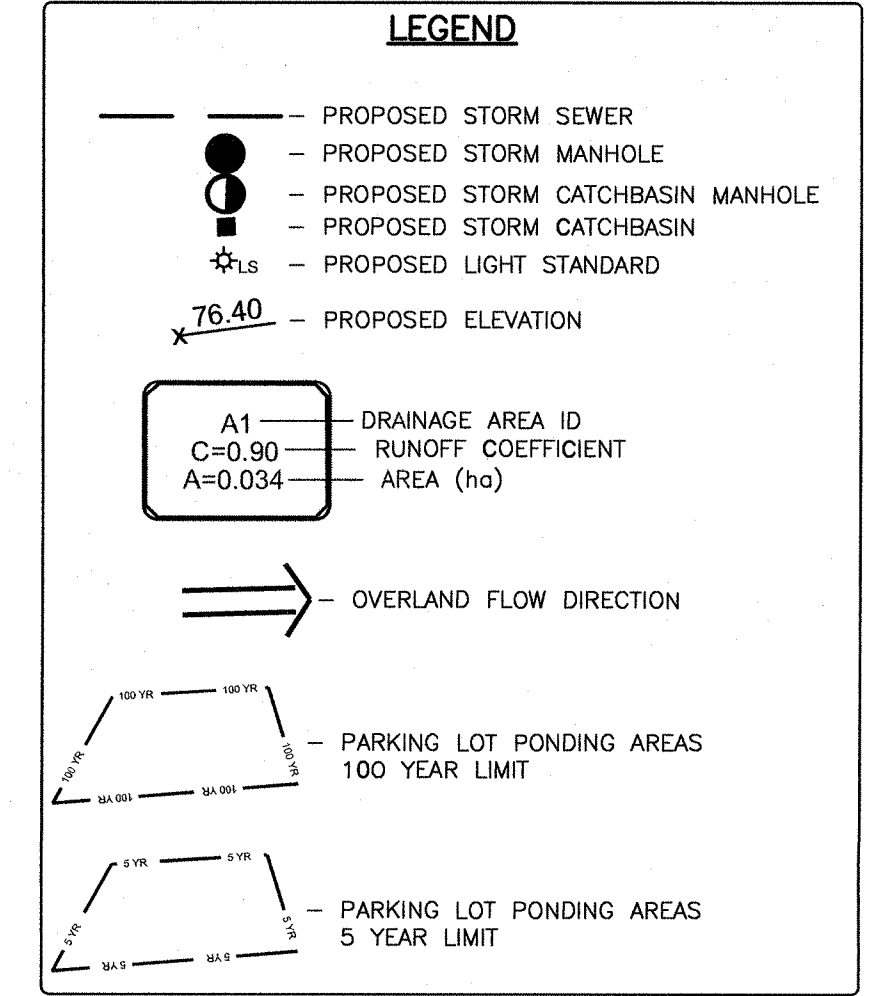
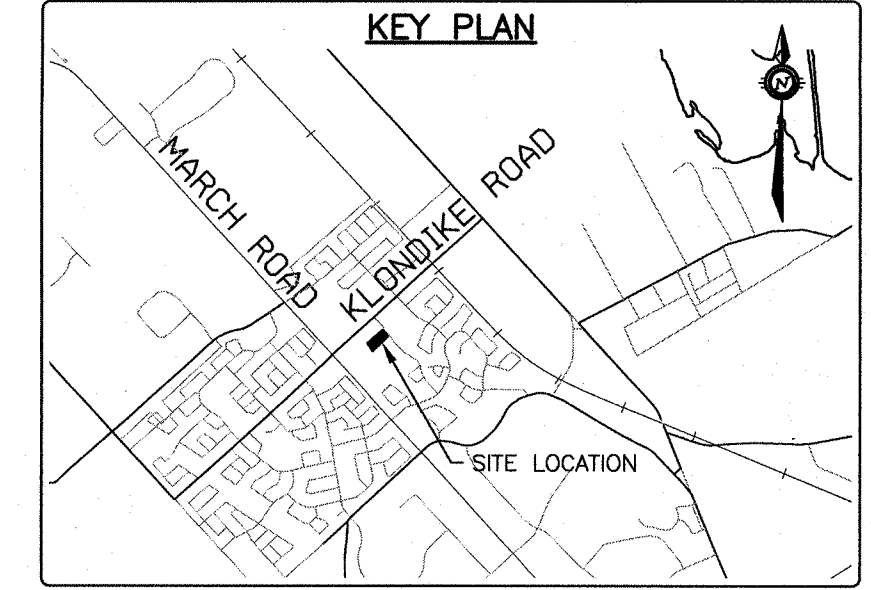
Ponding Location	Surface Area (m <sup>2</sup> )	Ponding Depth (m)	Volume (m <sup>3</sup> )
CB102	132	0.30	13.2
CB103	368.00	0.30	36.8
CB104	342.00	0.30	34.2
CB105	86.0	0.30	8.6
CB106	82.0	0.30	8.2
CB107	309.0	0.30	30.9
CB108	401.0	0.30	40.1
CBMH203	184	0.35	21.5
<b>Total Volume</b>			<b>193.5</b>

**PH2B - 100 YEAR SURFACE STORAGE VOLUMES**

Ponding Location	Surface Area (m <sup>2</sup> )	Ponding Depth (m)	Volume (m <sup>3</sup> )
CBMH202	217	0.35	25.3
<b>Total Volume</b>			<b>25.3</b>

**PH2C - 100 YEAR SURFACE STORAGE VOLUMES**

Ponding Location	Surface Area (m <sup>2</sup> )	Ponding Depth (m)	Volume (m <sup>3</sup> )
Roof	1160	0.15	58
<b>Total Volume</b>			<b>58.0</b>



**CAUTION**  
THE POSITION OF ALL POLE LINES, CONDUITS, WATERMANS, SEWERS AND OTHER UNDERGROUND AND OVERGROUND UTILITIES AND STRUCTURES IS NOT NECESSARILY SHOWN ON THE CONTRACT DRAWINGS, AND WHERE SHOWN, THE ACCURACY OF THE POSITION OF SUCH UTILITIES AND STRUCTURES IS NOT GUARANTEED. BEFORE STARTING WORK, DETERMINE THE EXACT LOCATION OF ALL SUCH UTILITIES AND STRUCTURES AND ASSUME ALL LIABILITY FOR DAMAGE TO THEM.

NO.	REVISION DESCRIPTION	DATE	BY	APPD
5	REVISED AS PER CITY COMMENTS	16/04/19	AE	AA
4	REVISED AS PER CITY COMMENTS	19/02/19	AE	AA
3	REVISED AS PER CITY COMMENTS	02/11/18	AE	AA
2	ISSUED FOR SITE PLAN APPROVAL	29/06/18	AE	AA
1	ISSUED FOR SITE PLAN APPROVAL	13/09/17	ML	AA

SCALE: HORIZONTAL 1:250

DESIGNED BY: *[Signature]*

REVIEWED BY: *[Signature]*

CLIENT: **KANATA MUSLIM ASSOCIATION**  
832 MARCH ROAD, OTTAWA, ON.  
K2W 0C9  
613.973.5000

PROJECT: **KMA MOSQUE AND COMMUNITY CENTRE**  
351 SANDHILL ROAD, OTTAWA, ON

PROJECT NO: OTT-00238504-00

SURVEY: F M & W

DATE: 2016-12-09

DRAWING NO: SWM-2

exp. SERVICES INC.  
1111 KENNEDY ROAD #1111, OTTAWA, ON K1A 0K8  
2500 Queen Street East, Unit 100  
Ottawa, ON K1M 1Y1  
www.exp-services.com

• BUILDINGS • EARTH & ENVIRONMENT • ENERGY •  
• INDUSTRIAL • INFRASTRUCTURE • SUSTAINABILITY •

File Name: C:\projects\kma\exp\dwg\20161209\kma\_00238504.dwg  
 User: m.ansari  
 Plot Date: 2019-08-26 PM 1:48:58  
 Plot File: C:\projects\kma\exp\dwg\20161209\kma\_00238504.dwg  
 Plot Style: exp.ctb  
 Reference: exp\DWG\DWG\20161209\kma\_00238504.dwg  
 Reference: exp\DWG\DWG\20161209\kma\_00238504.dwg