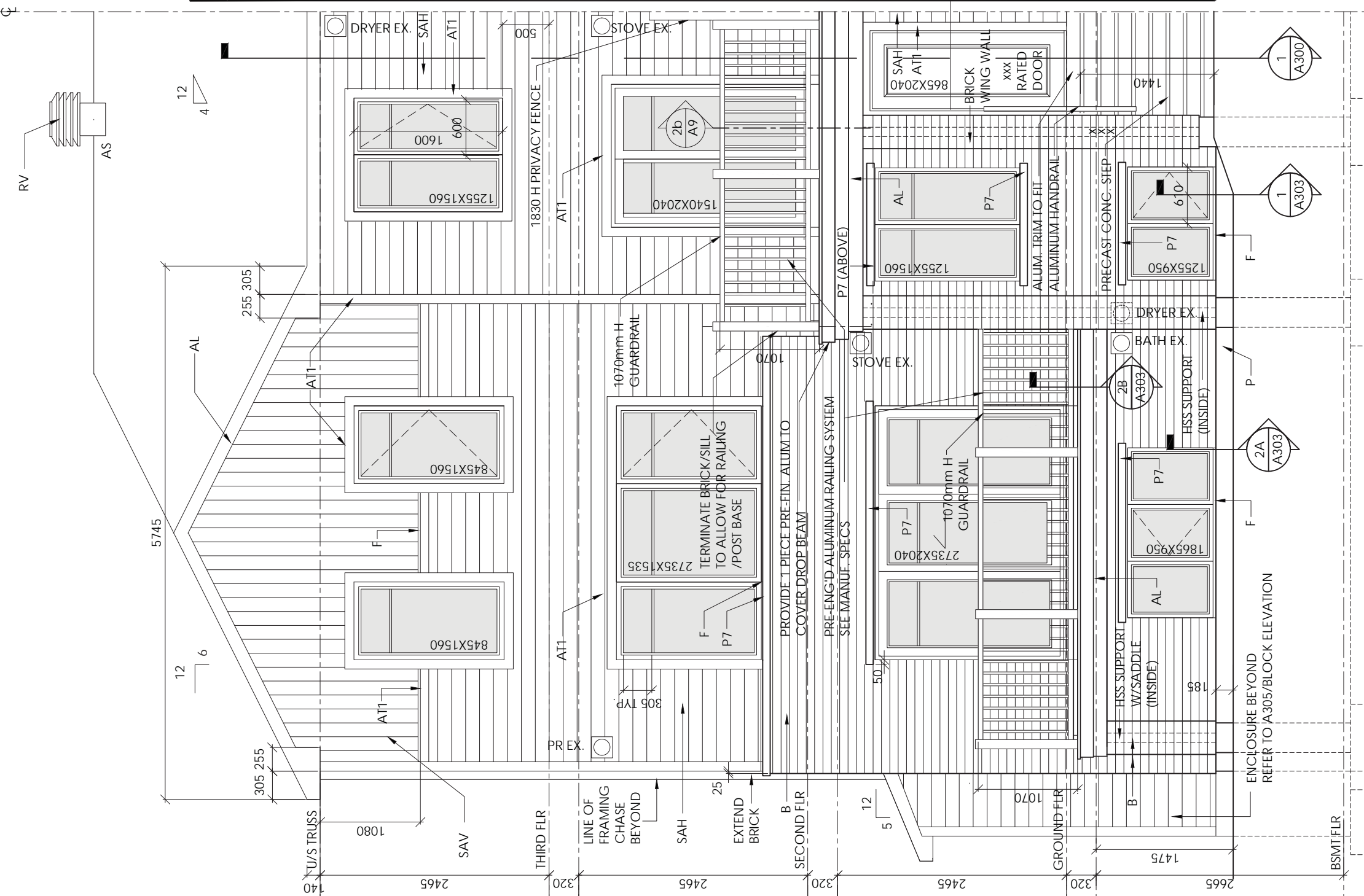


# EXTERIOR FINISHES

AC	-ACRYLIC FINISH
ACT1	-ACRYLIC FINISH TRIM (90mm)
ACT2	-ACRYLIC FINISH TRIM (140mm)
AL	-ALUMINIUM
AT1	-ALUMINIUM TRIM (90mm)
AT2	-ALUMINIUM TRIM (140mm)
AS	-ASPHALT SHINGLES
B	-BRICK VENEER (nominal size = 260x80)
B1	-BRICK SOLDIER COURSE
B2	-BRICK SOLDIER COURSE (20mm projection)
B3	-BRICK STRETCHER COURSE
B4	-BRICK STACK BOND
B5	-BRICK SILL ROWLOCK (SLOPED)
B6	-BRICK ROWLOCK
B7	-BRICK CORBELING
B8	-BRICK COINING (20mm projection)
B9	-BRICK HERRINGBONE
+20	-MASONRY PROJECTING 20mm
-20	-MASONRY RECESSED 20mm
CBP1	-CEMENT BOARD PANEL
CBT*	-CEMENT BOARD TRIM - WIDTH AS NOTED
CBT1-	CEMENT BOARD TRIM - 90mm
CBS	-CEMENT BOARD SIDING
EB	-EXTRA BRICK
F	-FLASHING
HP	-HARDBOARD PANEL TEXTURED
P	-PARGING
PCS	-POURED CONCRETE SILL (ONE PIECE)
PC	-PRECAST CONC. BLOCK SHAPE (SEE DWG)
PCC	-PRECAST CAP TO MATCH BRICK COURSING
P1	-PRECAST CONC. SILL 60mm HIGH
P2	-PRECAST CONC. KEYSTONE
P3	-PRECAST CONC. BLOCK 260mm SQ.
P4	-PRECAST CONC. BLOCK 260mm HIGH
P5	-PRECAST CONC. BLOCK 290mm HIGH
P6	-PRECAST CONC. BLOCK 150mm HIGH
P7	-PRECAST CONC. BLOCK 78mm HIGH
P8	-PRECAST CONC. SILL 78mm HIGH
PTW	-PRESSURE TREATED WOOD
RV	-ROOF/VENT
S	-SIDING HORIZONTAL (VINYL)
SAH	-SIDING HORIZONTAL (ALUMINIUM)
SAV	-SIDING VERTICAL (ALUMINIUM)
SV	-SIDING VERTICAL (VINYL)
S1	-SIDING HALF ROUND PANELS
S2	-SIDING SHAKE (VINYL)
S3	-SIDING STAGGERED SHAKE (VINYL)
SH1	-SHUTTERS (500 mm)
SH2	-SHUTTERS (350 mm)
ST	-STONE VENEER
ST1	-STONE VENEER STACK BOND
ST2	20mm PROJECTION
ST3	20mm PROJECTION
ST3	-LIMESTONE STARTER
U.P.O	-UNPROTECTED OPENING (SEE OBC 9.10.14)
VF	-VALLEY FLASHING
VT	-VINYL TRIM
WT	-WOOD TRIM
XXX	-ADDRESS LOCATION



THE JASMINE & THE ROOIBOS  
FRONT ELEVATION C - END UNIT

1 FRONT ELEVATION C - END UNIT  
A200  
SCALE: 1:50



OTTAWA-CARLETON STANDARD CONDOMINIUM PLAN NO. \_\_\_\_  
PART \_\_\_\_, SHEET \_\_\_\_ OF \_\_\_\_ SHEETS

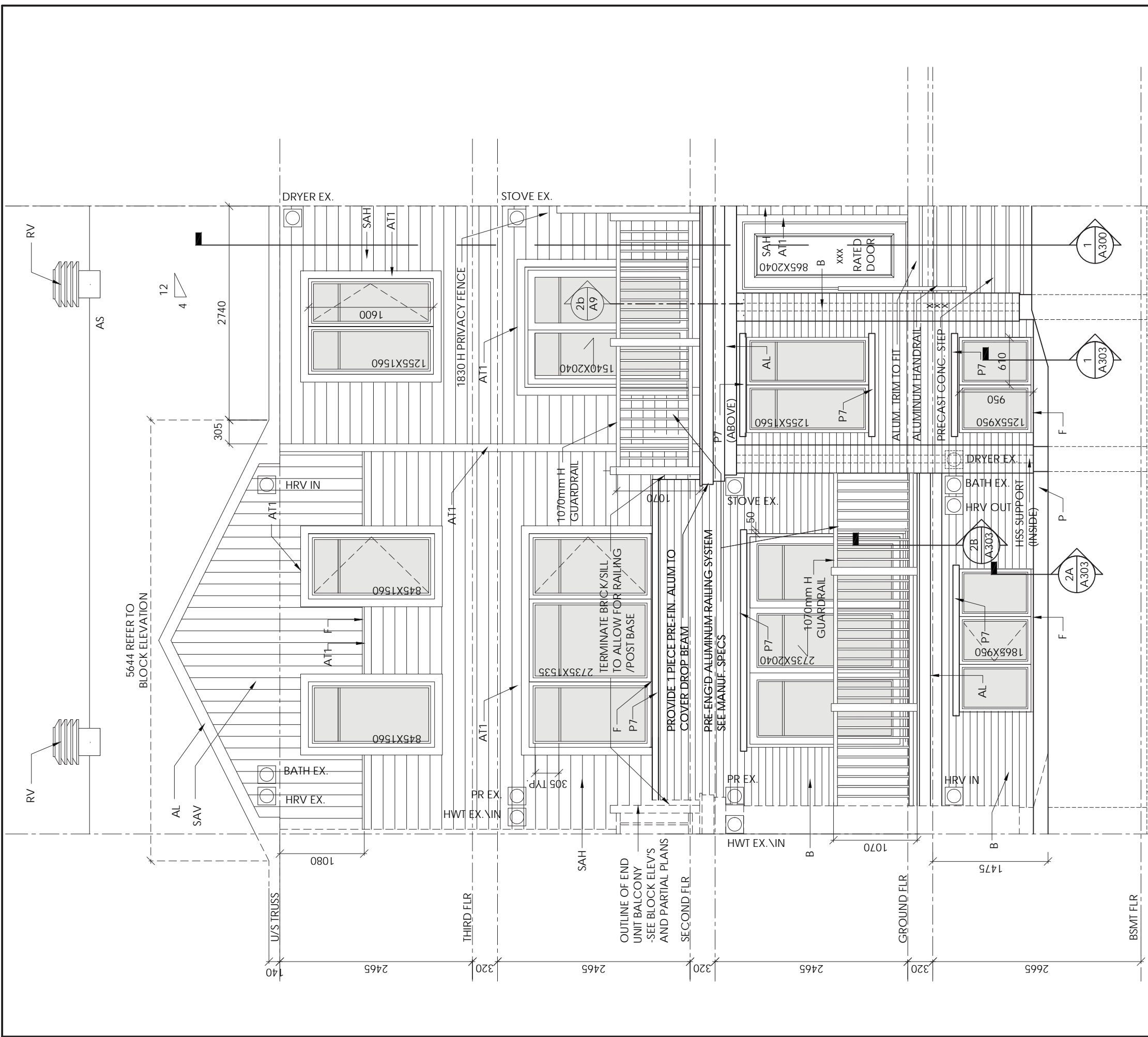
NO.	REVISION	DATE
1	ISSUED FOR REVIEW/CO-ORDINATION	18-08-15
2	COMMENTS INCORP'D	18-11-20
3	ISSUED FOR TENDER	18-12-11
4	ISSUED FOR PERMIT	19-01-10
6	ISSUED FOR CONSTRUCTION	19-03-14

OPTION B



PROJECT TITLE	MINTO INFUSION CONDO OTTAWA, ONTARIO
DRAWING TITLE	FRONT ELEVATION C END
2018 FUSION TERRACE	THE MATCHA THE JASMINE THE ROOIBOS THE CHAI
DESIGNED BY: ###	DRAWN BY: NG
START DATE:	SCALE: 1:50
PROJECT NO. 1806	DRAWING No. A200

NO.	REVISION	DATE
1	ISSUED FOR REVIEW/CO-ORDINATION	18-08-15
2	COMMENTS INCORP'D	18-11-20
3	ISSUED FOR TENDER	18-12-11
4	ISSUED FOR PERMIT	19-01-10
6	ISSUED FOR CONSTRUCTION	19-03-14



THE CHAI & THE MATCHA  
FRONT ELEVATION C - INT. UNIT

1 FRONT ELEVATION C - MID UNIT  
A201

SCALE: 1:50

OPTION B



www.vandenberg.com Telephone: 613.287.6164 Facsimile: 613.271.8509 mail@vandenberg.com  
"THE OLD STONE LODGE" • 162 FLAMBOROUGH WAY • OTTAWA (K1M1S6) • ONTARIO • L2K3B9

PROJECT TITLE  
**MINTO INFUSION CONDO**  
OTTAWA, ONTARIO

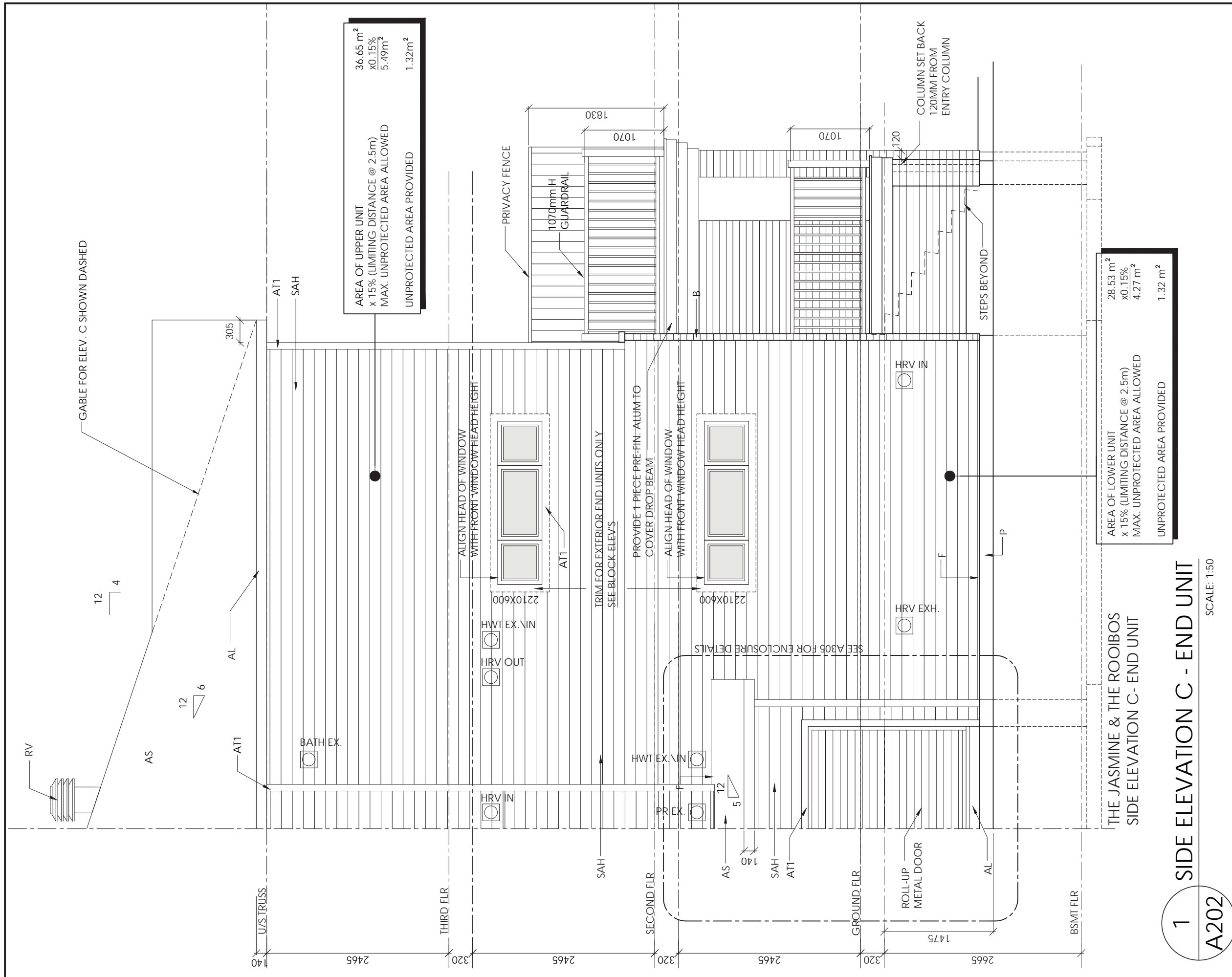
DRAWING TITLE  
**FRONT ELEVATION C MID**

2018 FUSION TERRACE  
THE MATCHA THE JASMINE  
THE ROOIBOS THE CHAI

DESIGNED BY: ###  
DRAWN BY: NG  
START DATE:  
SCALE: 1:50  
PROJECT NO. 1806

DRAWING No.  
**A201**

NO.	REVISION	DATE
1	ISSUED FOR REVIEW/CO-ORDINATION	18-08-15
2	COMMENTS INCORP'D	18-11-20
3	ISSUED FOR TENDER	18-12-11
4	ISSUED FOR PERMIT	19-01-10
6	ISSUED FOR CONSTRUCTION	19-03-14



www.vandenberg-wildeboer.ca Telephone: 613.287.6164 Facsimile: 613.271.8509 email@vandenberg-wildeboer.ca  
"THE OLD STONE LODGE" • 102 FLAMBOURGH WAY • OTTAWA (K1M 1Y1) • ONTARIO • CANADA

PROJECT TITLE  
**MINTO INFUSION CONDO**  
OTTAWA, ONTARIO

DRAWING TITLE  
**SIDE ELEVATION C END**

2018 FUSION TERRACE  
THE MATCHA THE JASMINE  
THE ROOIBOS THE CHAI

DESIGNED BY: ###  
DRAWN BY: NG  
START DATE:  
SCALE: 1:50  
PROJECT NO. 1806

DRAWING No.  
**A202**