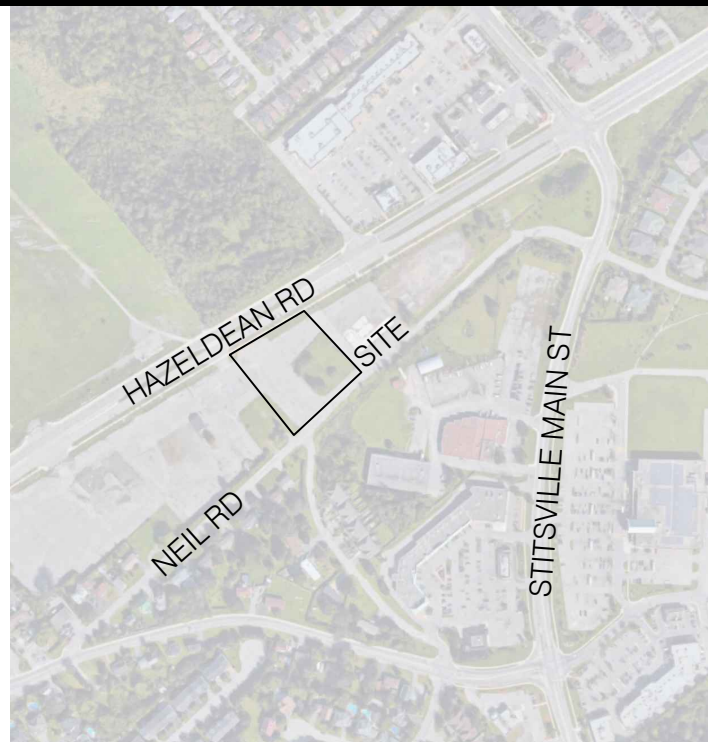




LEGEND:

- PROPERTY LINE
- EXISTING DECIDUOUS TREE TO REMAIN
- EXISTING DECIDUOUS TREE TO BE REMOVED
- EXISTING CONIFEROUS TREE TO REMAIN
- EXISTING CONIFEROUS TREE TO BE REMOVED



KEY MAP, NTS  
GENERAL NOTES

- ALL GENERAL SITE INFORMATION AND CONDITIONS COMPILED FROM SURVEY.
- DO NOT SCALE THIS DRAWING.
- REPORT ANY DISCREPANCIES PRIOR TO COMMENCING WORK. NO RESPONSIBILITY IS BORN BY THE LANDSCAPE ARCHITECT FOR UNKNOWN SUBSURFACE CONDITIONS.
- CONTRACTOR TO CHECK AND VERIFY ALL DIMENSIONS ON SITE AND REPORT ANY ERRORS AND/OR OMISSIONS.
- REINSTATE ALL AREAS AND ITEMS DAMAGED AS A RESULT OF CONSTRUCTION ACTIVITIES.
- DRAWING MAY NOT BE USED FOR CONSTRUCTION UNTIL SIGNED BY LANDSCAPE ARCHITECT AS ISSUED FOR CONSTRUCTION.
- THE ACCURACY OF THE POSITION OF UTILITIES IS NOT GUARANTEED.
- INDIVIDUAL UTILITY CO. MUST BE CONTACTED FOR CONFIRMATION OF UTILITY EXISTENCE AND LOCATION PRIOR TO DIGGING.
- THIS DRAWING IS AN INSTRUMENT OF SERVICE AND REQUIRES THE PERMISSION OF THE LANDSCAPE ARCHITECT FOR USE. COPYRIGHT IS RESERVED BY LASHLEY + ASSOCIATES CORPORATION.

TREES TO REMAIN			
NO.	TREE SPECIES	DBH	CONDITION
01	Apple/Malus spp	22,23,26cm	Fair
02	Balsam Fir/ Abies balsamea	33cm	Poor
03	Balsam Fir/ Abies balsamea	26cm	Fair
04	Balsam Fir/ Abies balsamea	32cm	Poor
05	Balsam Fir/ Abies balsamea	48cm	Fair
06	Colorado Blue Spruce/ Picea pungens 'Glaucol'	35cm	Good
07	Honey Locust/Gleditsia triacanthos	50cm	Fair-Good
08	Honey Locust/Gleditsia triacanthos	50cm	Fair-Good
09	Honey Locust/Gleditsia triacanthos	50cm	Fair-Good
10	Tree Lilac/Syringa vulgaris	9cm	Good
11	Tree Lilac/Syringa vulgaris	8cm	Good
12	Maple/ Acer spp	10cm	Poor
13	Maple/ Acer spp	10cm	Poor
14	Maple/ Acer spp	10cm	Poor
15	Burr Oak/ Quercus macrocarpa	6cm	Fair
16	Burr Oak/ Quercus macrocarpa	6cm	Fair
17	Red Oak/ Quercus ruba	7cm	Fair
18	Red Oak/ Quercus ruba	7cm	Fair
19	Red Oak/ Quercus ruba	7cm	Fair
20	Crab Apple/ Malus spp	13,18,19cm	Fair
21	Crab Apple/ Malus spp	25cm	Fair
22	Crab Apple/ Malus spp	26cm	Fair
23	Crab Apple/ Malus spp	15,20,22cm	Fair
24	Crab Apple/ Malus spp	18,20,26cm	Fair

APPROVED

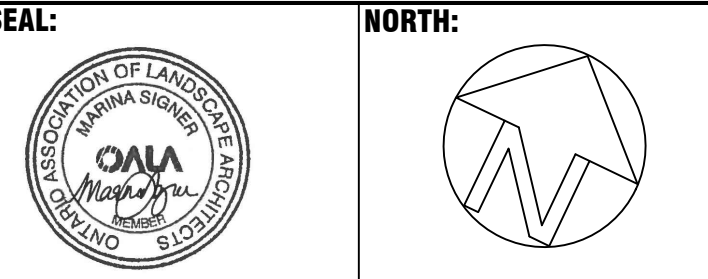
By Derrick Moodie at 12:44 pm, Apr 26, 2019

Derrick Moodie

DERRICK MOODIE  
MANAGER  
PLANNING, INFRASTRUCTURE & ECONOMIC  
DEVELOPMENT DEPARTMENT, CITY OF OTTAWA

1	2018/ 05/ 28	ISSUED FOR SITE PLAN APPLICATION
---	--------------	----------------------------------

NO.	DATE	DESCRIPTION
-----	------	-------------

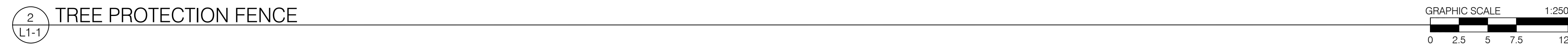


PROJECT:  
**6150 HAZELDEAN RD**  
  
6150 HAZELDEAN ROAD  
OTTAWA, ON

DRAWING TITLE:  
**PRE-DEVELOPMENT  
VEGETATION MAP**

DATE: 2018/05/22  
SCALE: 1:250  
DRAWN BY: S.G.  
LA PROJECT NO. 18705-1  
DRAWING NO.:  
**TP-1**






**LANDSCAPE NOTES:**

1. EXISTING VEGETATION, IN THE FORM OF TREES AND SHRUBS, SHALL BE PRESERVED AS NOTED.
2. REASONABLE MEASURES SHALL BE UNDERTAKEN TO LIMIT GROUND DISTURBANCE CAUSED BY HEAVY EQUIPMENT USAGE IN VICINITY OF PROPOSED LANDSCAPE.
3. PLANT MATERIAL SHALL BE NO.1 GRADE AND SHALL COMPLY WITH THE METRIC SPECIFICATIONS OF THE CANADIAN NURSERY TRADES ASSOCIATION, PUBLISHED BY THE CANADIAN NURSERY TRADES ASSOCIATION.
4. PLANT MATERIALS SHALL BE INSTALLED USING ACCEPTABLE HORTICULTURAL PRACTICES AND PLANTING MATERIALS SHALL CONSIST OF HEALTHY NURSERY STOCK.
5. PLANT SUBSTITUTIONS SHALL NOT BE PERMITTED UNLESS APPROVED BY THE LANDSCAPE ARCHITECT AND/OR THE TOWN OF PETERBORO.
6. NATIVE AND NON-INVASIVE NURSERY-GROWN PLANT STOCK IS SPECIFIED HEREIN. DEERING WITH THE PRINCIPLES OF URBAN FORESTRY MANAGEMENT BEST PRACTICES AND SUPPLIED BY NURSERIES THAT SUPPORT SUSTAINABLE PRACTICES IN PLANT PRODUCTION.
7. PLANTS SHALL BE PLANTED WITH CARE SO AS NOT TO BREAK UP ROOT/SOIL CLOSOS OR BRANCHES.
8. ON SITE, ALL PLANTS SHOULD BE PROTECTED FROM SUN AND DRYING WINDS AND SHOULD BE WATERED FREQUENTLY UNTIL PLANTING.
9. PITS AND PLANTING BEDS SHOULD BE LOCATED ACCORDING TO THE DRAINAGE AND SHALL BE OF SUFFICIENT SIZE ACCORDING TO THE DETAILS PROVIDED.
10. ALL SURFACES OF PLANTING BEDS (PERENNIALS AND SHRUBS) AND SAUCERED TREE PLANTING PITS SHALL BE COVERED WITH 100mm DEPTH MULCH NATURAL CENR CALLED UNLESS NOTED OTHERWISE.
11. THE PLANTING SOIL AND PLANTS SHALL BE AMENDED INDIVIDUALLY - DIRECTLY TO THE PLANTING HOLE WITH COMPOST, BONE MEAL, AND MYCORRHIZAE (BENEFICIAL FUNGUS) ACCORDING TO MANUFACTURER RECOMMENDATIONS.
12. PLANTS SHOULD BE WATERED LESS THAN AN HOUR AFTER PLANTING AND AGAIN WITHIN 24 HOURS.
13. ALL DECIDUOUS TREES SHALL BE PROTECTED AGAINST RODENTS WITH AN EXPANDABLE POLYETHYLENE GUARD (MINIMUM 300MM HIGH) - INSTALLED TO THE BASE OF THE TREE. THE GUARD SHALL BE REMOVED TO BE REMOVED AFTER 5 YEARS BY MAINTENANCE CONTRACTOR.
14. WINTER PROTECTION: NECESSARY PROTECTION SHALL BE INSTALLED FOR ALL FRAGILE PLANTS TO PROTECT AGAINST WINTER WINDS OR LIKELY DANGEROUS SITUATIONS. FOR EXAMPLE, A NET OR BUILDING SUPPORT TO FALLING SNOW FROM ROOFS, OR IN AREAS SUBJECT TO SNOW STORAGE AND REMOVAL, THE PROTECTION SHALL BE REVIEWED AND APPROVED AT THE END OF THE PLANTING WORKS BY THE LANDSCAPE ARCHITECT. PROTECTIONS MUST BE ADAPTED TO EACH PLANT OR GROUP OF PLANTS.
15. CONFERRER TREES TO BE PROTECTED WITH 4 STAKES AT DIAGONAL DIAGONAL WRAPPED HORIZONTALLY WITH WRAPPING MATERIAL (NEWSPAPER) COMPLETELY VERTICAL EACH TREE IN THE FALL PRIOR TO FIRST MAJOR SNOWFALL.
16. TREES PITS (NO PESTICIDES OR HERBICIDES IN ACCORDANCE WITH MUNICIPAL BY-LAWS AND PROVINCIAL LEGISLATION).
17. WATER A MINIMUM OF ONCE A WEEK FOR THE FIRST FOUR WEEKS, WHEN REQUIRED THEREAFTER AND IN SUFFICIENT QUANTITIES TO SATURATE THE ROOT SYSTEM AND TO ENSURE SUFFICIENT MOISTURE FOR VIGOROUS PLANT MATERIAL GROWTH. ENSURE ADEQUATE MOISTURE IN THE ROOTBALL AT TIME OF FIRST FROST. THE USE OF "GATOR BAGS" OR EQUIVALENT IS REQUIRED TO MAINTAIN EQUAL LEVELS OF MOISTURE.
18. PRUNING, INCLUDING THE REMOVAL AND DISPOSAL OF DEAD OR BROKEN BRANCHES.
19. MONITOR ALL PLANT MATERIAL FOR VIGOROUS GROWTH IF APPLICATION OF FERTILIZER IS DEEMED NECESSARY. PRIOR TO THE APPLICATION, MONITOR NUTRIENT AND IRRIGATION RATE TO LANDSCAPE ARCHITECT.
20. THE MAINTENANCE OF ALL ACCESSORIES IN GOOD CONDITION AND PROPERLY ADJUSTED INCLUDING THE REPAIR OR REPLACEMENT OF ACCESSORIES MUST BE DONE TO ADEQUATE STANDARDS.
21. AT THE TIME OF FINAL WARRANTY ACCEPTANCE, ALL MATERIAL MUST BE IN A HEALTHY AND VIGOROUS CONDITION BEDS AND TREES PITS MUST BE FRESHLY CULTIVATED AND FREE OF WEEDS, RUBBISH AND DEBRIS. ALL MATERIALS, TREES AND PLANTS MUST BE IN GOOD HEALTH. PRIOR TO FINAL ACCEPTANCE, EXCEPT FOR PLANT MATERIAL CONTINUING UNDER EXTENDED WARRANTY.

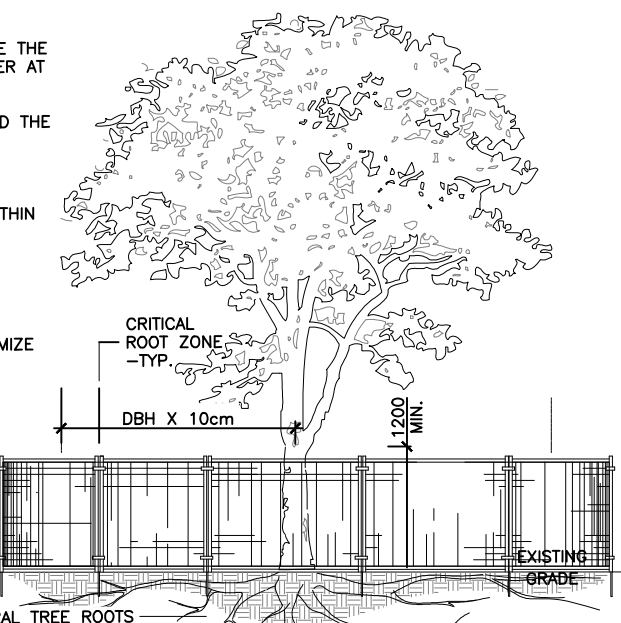
**OFFSET AND CLEARANCE NOTES:**

1. CONTRACTOR TO LAYOUT PLANTING BEDS, PATHWAYS ETC. TO APPROVAL OF LANDSCAPE ARCHITECT PRIOR TO ANY EXCAVATION.
2. TRUNKS OF ALL TREES MUST BE CLEAR OF ALL OBSTACLES, SIGHT TRIANGLES. OBTAIN APPROVAL OF PLANTING LAYOUT PRIOR TO DIGGING.
3. TREE PLANTING SHALL BE HAND EXCAVATED FOR THOSE LOCATIONS WITH LESS THAN 1 M CLEARANCE TO ANY UNDERGROUND UTILITIES.
4. TREES TO BE LOCATED 1M FROM DRIVEWAYS AND SIDEWALKS, 1.5M FROM CURB ROADS.
5. TREES SHALL BE PLACED TO PROVIDE A MINIMUM SEPARATION DISTANCE OF 2M FROM HYDRANTS, 1.5M FROM WATER CURB-STOPS.
6. TREES ARE TO BE LOCATED A MINIMUM DISTANCE OF 2M FROM THE SIDEWALKS, 1.5M FROM POWER SERVICES, AND A MINIMUM DISTANCE OF 0.5M FROM A GAS SERVICE.
7. TREES ARE TO BE LOCATED A MINIMUM DISTANCE OF 4.5M FROM A SIDEWALK, 2M FROM DRIVEWAYS AND SIDEWALKS, 1.5M FROM TREES. CLEARANCES FROM UTILITY PIPES SHALL BE AS PER THE DIRECTION OF THE AFFECTED UTILITY.



---



**DERRICK MOODIE**  
**MANAGER**  
**PLANNING, INFRASTRUCTURE & ECONOMIC**  
**DEVELOPMENT DEPARTMENT, CITY OF OTTAWA**



2 TREE PROTECTION FENCE  
L1-1

1. ALL GENERAL SITE INFORMATION AND CONDITIONS COMPLIED FROM SURVEY.
2. DO NOT SCALE THIS DRAWING.
3. REPORT ANY DISCREPANCIES PRIOR TO COMMENCING WORK. NO RESPONSIBILITY IS ASSUMED BY THE LANDSCAPE ARCHITECT FOR UNKNOWN SUBSURFACE CONDITIONS.
4. CONTRACTOR TO CHECK AND VERIFY ALL DIMENSIONS ON SITE AND REPORT ANY ERRORS AND/OR OMISSIONS.
5. REINSTATE ALL AREAS AND ITEMS DAMAGED AS A RESULT OF CONSTRUCTION ACTIVITIES.
6. THIS DRAWING MAY NOT BE USED FOR CONSTRUCTION UNTIL SIGNED BY LANDSCAPE ARCHITECT AS ISSUED FOR CONSTRUCTION.
7. THE ACCURACY OF THE POSITION OF UTILITIES IS NOT GUARANTEED.
8. INDIVIDUAL UTILITY CO. MUST BE CONTACTED FOR CONFIRMATION OF UTILITY EXISTENCE AND LOCATION PRIOR TO ANY DIGGING.
9. THIS DRAWING IS AN INSTRUMENT OF SERVICE AND REQUIRES THE PERMISSION OF THE LANDSCAPE ARCHITECT FOR USE. COPYRIGHT IS RESERVED BY LASHLEY + ASSOCIATES CORPORATION.

1. ALL EXISTING TREES TO REMAIN SHALL BE PROTECTED FROM DAMAGE DURING CONSTRUCTION BY MAINTAINING A PROTECTION FENCE AT THE CRITICAL ROOT ZONE OF THE TREE OR GROUP OF TREES.  
  
-CRZ: DIAMETER OF TRUNK IN CM MULTIPLIED BY 10CM
2. STORAGE OF MATERIALS AND/OR EQUIPMENT IS PROHIBITED WITHIN THE DRIP LINE OF ALL EXISTING TREES TO REMAIN.
3. CONTRACTOR MUST COMPLY WITH THE MIGRATORY BIRDS CONVENTION ACT (MBCA), 1994 AND REGULATIONS.
4. TREES NOTED FOR REMOVAL MUST BE CUT OUTSIDE OF BIRD NESTING SEASON.
5. BIRD NESTING SEASON: APRIL 1ST UNTIL AUGUST 31ST.

NO.	DATE	DESCRIPTION
SEAL:		NORTH:
		

**PROJECT:**

**6150 HAZELDEAN RD**

6150 HAZELDEAN ROAD  
OTTAWA, ON

<b>DATE:</b>	2018/05/22	<b>DRAWING NO.:</b>  <div style="font-size: 2em; font-weight: bold; text-align: center;">TP-2</div>
<b>SCALE:</b>	1:250	
<b>DRAWN BY:</b>	S.G.	
<b>LA PROJECT NO.</b>	18705-1	

**TP-2**