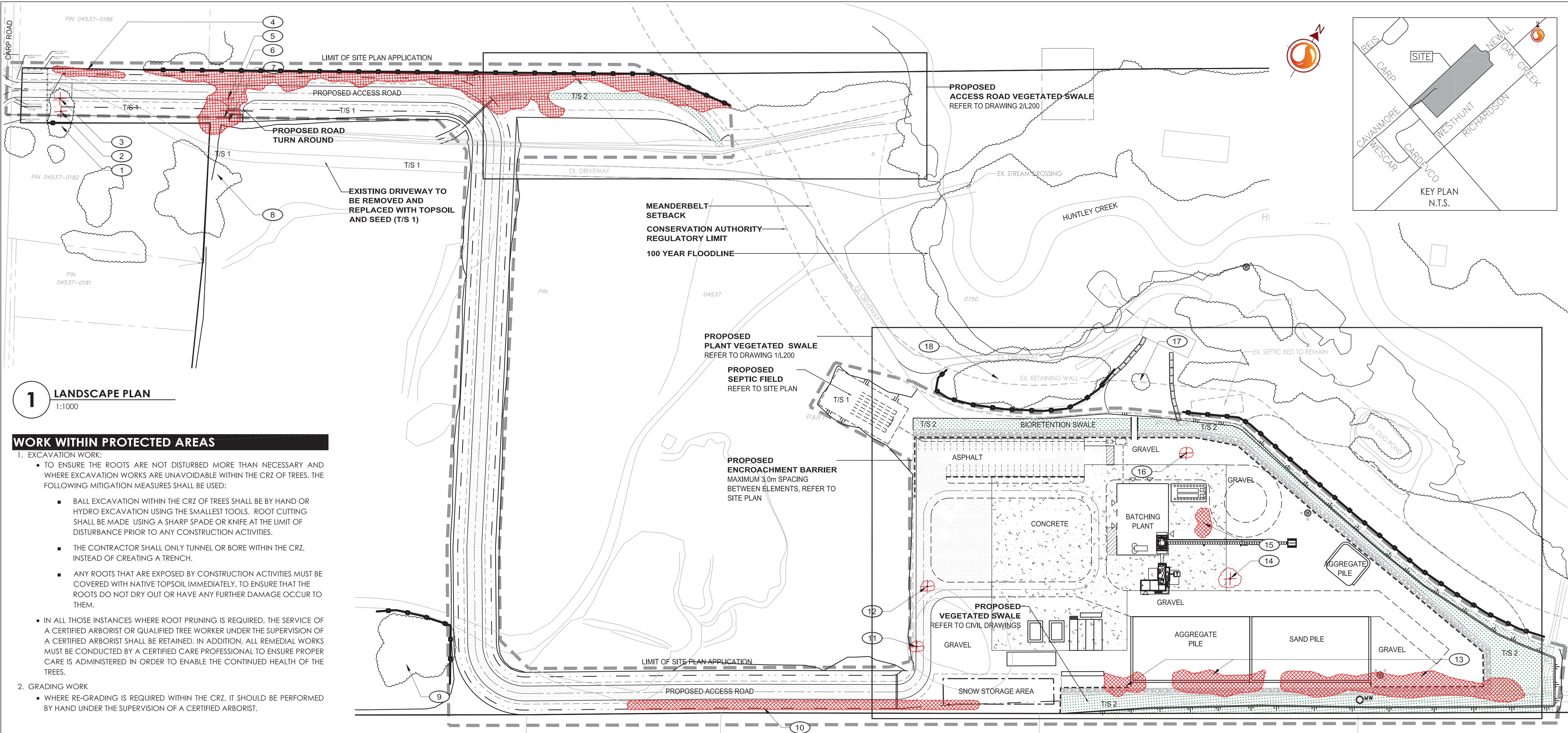


W:\Gardens\1 Planning\Landscapes\1604\1009 - Carp Road Business Park Design\Drawings\1604\1009_1B.dwg
20/10/2011 11:45 AM by: Maccan, Gregory



1 LANDSCAPE PLAN

1:1000

WORK WITHIN PROTECTED AREAS

- EXCAVATION WORK:
 - TO ENSURE THE ROOTS ARE NOT DISTURBED MORE THAN NECESSARY AND WHERE EXCAVATION WORKS ARE UNAVOIDABLE WITHIN THE CRZ OF TREES, THE FOLLOWING MITIGATION MEASURES SHALL BE USED:
 - BALL EXCAVATION WITHIN THE CRZ OF TREES SHALL BE BY HAND OR HYDRO EXCAVATION USING THE SMALLEST TOOLS. ROOT CUTTING SHALL BE MADE USING A SHARP SPADE OR KNIFE AT THE LIMIT OF DISTURBANCE PRIOR TO ANY CONSTRUCTION ACTIVITIES.
 - THE CONTRACTOR SHALL ONLY TUNNEL OR BORE WITHIN THE CRZ, INSTEAD OF CREATING A TRENCH.
 - ANY ROOTS THAT ARE EXPOSED BY CONSTRUCTION ACTIVITIES MUST BE COVERED WITH NATIVE TOPSOIL IMMEDIATELY, TO ENSURE THAT THE ROOTS DO NOT DRY OUT OR HAVE ANY FURTHER DAMAGE OCCUR TO THEM.
- IN ALL THOSE INSTANCES WHERE ROOT PRUNING IS REQUIRED, THE SERVICE OF A CERTIFIED ARBORIST OR QUALIFIED TREE WORKER UNDER THE SUPERVISION OF A CERTIFIED ARBORIST SHALL BE RETAINED. IN ADDITION, ALL REMEDIAL WORKS MUST BE CONDUCTED BY A CERTIFIED CARE PROFESSIONAL TO ENSURE PROPER CARE IS ADMINISTERED IN ORDER TO ENABLE THE CONTINUED HEALTH OF THE TREES.
- GRADING WORK
 - WHERE RE-GRADING IS REQUIRED WITHIN THE CRZ, IT SHOULD BE PERFORMED BY HAND UNDER THE SUPERVISION OF A CERTIFIED ARBORIST.

EXISTING VEGETATION SCHEDULE

TREE ASSESSMENT CONDUCTED: SEPTEMBER 12 & 18, 2018

PLANT ID	BOTANICAL NAME	COMMON NAME	DBH (cm)	HEALTH/ CONDITION	REMARKS
1	<i>Pinus strobus</i>	White Pine	55	Good	2590 Carp Rd: TO BE PROTECTED
2	<i>Picea glauca</i>	White Spruce	80	Poor	Main leader / trunk is broken approximately 7.0m from ground : TO BE REMOVED
3	<i>Larix laricina</i>	Tamarack	35	Good	Will be impacted by new entrance: TO BE REMOVED
4	<i>Acer negundo</i>	Manitoba Maple	15	Good	Multistem part of a grouping with understorey: Will be impacted by new entrance: TO BE REMOVED
5	<i>Salix nigra</i>	Black Willow	70	Good	Will be impacted by new entrance: TO BE REMOVED
6	<i>Salix nigra</i>	Black Willow	2x60	Good	Multistem will be impacted by new entrance: TO BE REMOVED
7	<i>Salix nigra</i>	Black Willow	60	Good	Will be impacted by new entrance: TO BE REMOVED
8	<i>Betula papyrifera</i>	White Birch	10-35	Good to Fair	Grouping: TO BE PROTECTED
	<i>Populus tremuloides</i>	Trembling Aspen			
	<i>Acer negundo</i>	Manitoba Maple			
	<i>Rhus typhina</i>	Staghorn Sumac			
	<i>Salix spp</i>	Willow			
9	<i>Salix nigra</i>	Black Willow	15-30	Good to Fair	Grouping: TO BE PROTECTED
	<i>Acer negundo</i>	Manitoba Maple			
	<i>Thuja occidentalis</i>	Eastern White Cedar			
	<i>Ulmus americana</i>	American Elm			
	<i>Fraxinus americana</i>	White Ash			
10	<i>Populus tremuloides</i>	Trembling Aspen	10-15: 50(elms)	Good to Poor	Hedgerow: Presence of Emerald Ash Borer (EAB): TREES INSIDE PROPERTY LINE TO BE REMOVED
	<i>Ulmus americana</i>	American Elm			
	<i>Acer negundo</i>	Manitoba Maple			
	<i>Malus spp</i>	Apple			
	<i>Fraxinus americana</i>	White Ash			
11	<i>Acer negundo</i>	Manitoba Maple	25	Good	Will be impacted by new access road and plant area: TO BE REMOVED
12	<i>Populus deltoides</i>	Eastern Cottonwood	20	Good	Will be impacted by new access road and plant area: TO BE REMOVED
13	<i>Picea glauca</i>	White Spruce	20-25	Good	Hedgerow: Will be impacted by the new plant : TO BE REMOVED
14	<i>Picea pungens</i>	Colorado Spruce	60	Good	Will be impacted by the new plant: TO BE REMOVED
15	<i>Quercus macrocarpa</i>	Bur Oak	10-15	Good	Will be impacted by the new plant: TO BE REMOVED
	<i>Malus spp</i>	Apple			
16	<i>Ulmus americana</i>	American Elm	60	Fair to Poor	Multistem (2 stems): One stem is poor to dead with major limb damage and one stem is in fair condition: Will be impacted by the construction of the new plant: TO BE REMOVED
	<i>Acer negundo</i>	Manitoba Maple			
17	<i>Tilia americana</i>	American Basswood	25	Good	Growing inside an island/ Round about in the drive way: TO BE PROTECTED
	<i>Quercus alba</i>	White Oak			
18	<i>Tilia americana</i>	American Basswood	10-45	Good to Poor	Growing: Presence of Emerald Ash Borer (EAB): TO BE PROTECTED
	<i>Thuja occidentalis</i>	Northern White-cedar			
	<i>Acer negundo</i>	Manitoba Maple			
19	<i>Fraxinus sp.</i>	Ash			
	<i>Ulmus americana</i>	American Elm			

TREE PRESERVATION NOTES

- NO VEGETATION SHALL BE REMOVED WITHOUT MUNICIPAL WRITTEN APPROVAL.
- LOCATION OF EXISTING TREES IS FOR REFERENCE ONLY AND SHALL BE CONFIRMED BY AN ARBORIST AND SURVEYOR.
- NO VEGETATION REMOVAL SHALL OCCUR BETWEEN APRIL 1 AND AUGUST 15 OF ANY YEAR TO PROTECT BREEDING MIGRATORY BIRDS, AS WELL AS AT RISK BAT SPECIES. SHALL TREE REMOVAL DURING THIS PERIOD BY UNAVOIDABLE, THE CONTRACTOR IS REQUIRED TO CONDUCT A NESTING SURVEY BY A REGISTERED PROFESSIONAL AVIAN BIOLOGIST TO IDENTIFY AND ENSURE NO NESTING ACTIVITIES ARE PRESENT. TREE REMOVAL WILL BE ALLOWED WITHIN FIVE (5) DAYS OF CONDUCTING THE SURVEY.
- CONTRACTOR SHALL ENSURE THE PROTECTION OF MATURE TREES IDENTIFIED TO BE RETAINED. TREE PROTECTION FENCING SHALL BE INSTALLED AT THE CRITICAL ROOT ZONE (CRZ) OF TREES WHERE THE CRZ IS ESTABLISHED AS BEING 10 CENTIMETRES FROM THE TRUNK OF A TREE FOR EVERY CENTIMETRE OF TRUNK DIAMETER AT BREAST HEIGHT (DBH). THE CRZ IS CALCULATED AS DBH X 10 CM. TREE PROTECTION FENCING SHALL BE INSTALLED AS SPECIFIED.
- DURING EXCAVATION EQUIPMENT MUST BE MAINTAINED WITHIN THE CONFINES OF THE WORK AREA SO AS NOT TO DISRUPT ANY TURF OR TREE ROOTS UNNECESSARILY. DO NOT PLACE ANY MATERIAL OR EQUIPMENT WITHIN THE CRITICAL ROOT ZONE (CRZ) OF ANY TREE TO BE RETAINED.
- CONTRACTOR SHALL ENSURE THAT NO FILL WILL BE ALLOWED TO OCCUR ON THE SURFACE ABOVE THE CRITICAL ROOT ZONE (CRZ) OF TREES.
- ALL EXCAVATED MATERIAL, INCLUDING IMPORTED MATERIAL, MUST BE REMOVED IMMEDIATELY AND NOT PLACED ON GRASS OR NEAR TREES IN ORDER TO PREVENT ROOT DAMAGE. ACCIDENTAL HITTING OF ADJACENT TREES, AND TURF DAMAGE OUTSIDE OF WORK AREA.
- CONTRACTOR SHALL MINIMIZE SOIL COMPACTION BY KEEPING OPERATION OF MACHINERY AND EQUIPMENT CONFINED TO DESIGNATED WORK AREA.
- CONTRACTOR SHALL KEEP A SPILL KIT ON SITE.
- CONTRACTOR SHALL DEVELOP AN EMERGENCY RESPONSE PLAN.
- CONTRACTOR SHALL AVOID SOIL CONTAMINATION AND FUTURE LIABILITY BY CONFINING THE OILING AND REFUELING OF MACHINERY AND EQUIPMENT TO DESIGNATED STAGING AREA.
- NO FUEL IS TO BE STORED WITHIN THE CRITICAL ROOT ZONE (CRZ) OF ANY TREE AND EXHAUST FUMES FROM ALL EQUIPMENT MUST NOT BE DIRECTED TOWARDS ANY TREE'S CANOPY.
- CONTRACTOR SHALL PREVENT ANY DAMAGE TO THE ROOT SYSTEM, TRUNK OR BRANCHES OF ANY TREES TO BE RETAINED ON SITE AND ON ADJACENT PROPERTIES.
- STORAGE OF EQUIPMENT AND VEHICLES WITHIN THE CRITICAL ROOT ZONE (CRZ) OF EXISTING TREES IS STRICTLY PROHIBITED.
- WHERE LIMBS OR PORTIONS OF TREES ARE REMOVED TO ACCOMMODATE CONSTRUCTION WORK, THEY WILL BE REMOVED CAREFULLY IN ACCORDANCE WITH ACCEPTED ARBORICULTURAL PRACTICES.
- WHERE NECESSARY, THE TREES WILL BE GIVEN AN OVERALL PRUNING TO RESTORE THEIR APPEARANCE. NOT MORE THAN ONE THIRD OF THE TOTAL BRANCHING SHALL BE REMOVED DURING A SINGLE OPERATION. THE SERVICES OF A CERTIFIED ARBORIST SHALL BE RETAINED FOR THIS TASK.

LANDSCAPE PLAN NOTES

- REFER TO ENGINEERING DRAWINGS FOR PROPOSED GRADING.
- REFER TO ENGINEERING DRAWINGS FOR PROPOSED BIORETENTION DESIGN AND DETAILS.
- CONTRACTOR TO LOCATE AND STAKE ALL UTILITIES PRIOR TO ANY WORK ON THE SITE. DO NOT PLANT DIRECTLY ABOVE UNDERGROUND UTILITIES. REPORT ANY DISCREPANCIES TO THE LANDSCAPE ARCHITECT FOR DIRECTION.
- MAINTAIN A MINIMUM DISTANCE OF 2.0m FROM ALL UNDERGROUND UTILITIES.
- NO TREES SHALL BE PLANTED UNDER OVERHEAD WIRES.
- THE LANDSCAPE ARCHITECT MAY ADJUST THE LOCATION OF PLANTING PRIOR TO PLANTING TO MINIMIZE CONFLICTS WITH UTILITIES, DRIVEWAYS AND INTERSECTION VISIBILITY.
- CONTRACTOR SHALL SUPPLY ALL MATERIALS IN QUANTITIES SUFFICIENT TO COMPLETE WORK SHOWN ON THESE DRAWINGS. ANY DISCREPANCIES SHALL BE REPORTED TO THE LANDSCAPE ARCHITECT FOR DIRECTION.
- DO NOT MAKE SUBSTITUTIONS OF MATERIALS, PRODUCTS OR QUANTITIES WITHOUT PRIOR WRITTEN PERMISSION OF THE LANDSCAPE ARCHITECT.
- THE CONTRACTOR TO MAKE GOOD TO THE SATISFACTION OF THE LANDSCAPE ARCHITECT ANY AREAS DAMAGED BY THE WORK.
- UPON THE COMPLETION OF WORK EACH DAY, REMOVE ALL DEBRIS, GARBAGE AND SURPLUS MATERIALS FROM THE SITE. KEEP THE SITE CLEAN AND USEABLE AT ALL TIMES.
- ALL WORKMANSHIP AND MATERIALS (INCLUDING PLANTS) TO BE GUARANTEED FOR ONE FULL YEAR FOLLOWING FINAL ACCEPTANCE OF THE PROJECT.
- THE CONTRACTOR SHALL REMOVE ALL T-BAR AND WOODEN TREE STAKES PRIOR TO ASSUMPTION BY THE OWNER.
- AT THE TIME OF INSPECTION FOR ACCEPTANCE ALL TREE PITS SHALL BE CULTIVATED, FREE OF WEEDS, LEAVES, BROKEN BRANCHES AND DEBRIS.

SEEDING SCHEDULE

- SEED MIXTURE TYPE 1: IN AREAS ADJACENT TO THE PROPOSED ACCESS ROAD, OVER THE SEPTIC FIELD, AND IN ALL DISTURBED AREAS INCLUDING THOSE OUTSIDE THE PROPERTY.
 - SEED MIXTURE: "LOW MAINTENANCE ECO-LAWN" MIXTURE #8340 BY OSC SEEDS OR APPROVED EQUIVALENT:
 - 35% Festuca rubra / Chewings Fescue
 - 35% Festuca ovina / Hard Fescue
 - 20% Festuca rubra/ Creeping Red Fescue
 - 10% Lolium perenne / Perennial ryegrass
 - APPLICATION RATE: 180kg/ha
 - APPLICATION TYPE: HYDRAULIC MULCH
 - TOPSOIL: MINIMUM 150mm DEEP. SOIL TEXTURE BASED ON THE CANADIAN SYSTEM OF SOIL CLASSIFICATION TO CONSIST OF:
 - CLAY: 14-20%
 - SILT: 0-35%
 - SAND: 45-70%
 - ORGANIC MATERIAL: 4-10%
 - pH: 6-8
 - REFERENCE SPECIFICATION: OPSS 804.
- SEED MIXTURE TYPE 2: IN ALL VEGETATED SWALES AND BIORETENTION GREEN FACILITIES.
 - SEED MIXTURE:
 - 30% Elymus virginicus / Virginia Wild Rye
 - 25% Carex vulpinoideus / Fox Sedge
 - 15% Carex bebbii / Bebb's Sedge
 - 10% Muhlenbergia mexicana / Knot-root Grass
 - 10% Scirpus cyperinus / Woolgrass
 - 10% Panicum virgatum / Switchgrass
 - APPLICATION RATE: 35 kg / HECTARE
 - APPLICATION TYPE: HYDRAULIC MULCH AS DEFINED BY OPSS 804.
 - TOPSOIL: MIXTURE AND DEPTH AS INDICATED ON ENGINEERING DRAWINGS.



Stantec Consulting Ltd.
400 - 1331 Clyde Avenue
Ottawa ON
Tel. 613.722.4420
www.stantec.com

Copyright Reserved

The Contractor shall verify and be responsible for all dimensions, DO NOT scale the drawing - any errors or omissions shall be reported to Stantec without delay.
The Copyrights to all designs and drawings are the property of Stantec. Reproduction or use for any purpose other than that authorized by Stantec is forbidden.

Legend

- EXISTING VEGETATION TO REMAIN
- EXISTING VEGETATION AREA TO BE REMOVED
- EXISTING TREE TO BE REMOVED
- TEMPORARY TREE PROTECTION FENCE REFER TO DETAIL 1/L300
- PROPOSED DECIDUOUS TREES
- PROPOSED CONIFEROUS TREES
- PROPOSED SHRUB
- PROPOSED PLANTING BED
- T/S 1 150mm TOPSOIL AND SEED MIXTURE TYPE 1
- T/S 2 150mm TOPSOIL AND SEED MIXTURE TYPE 2
- PROPOSED WELL LOCATION
- PROPOSED BOLLARDS
- CONCRETE PAD
- ASPHALT AREA
- RIPRAP
- BUILDING ENTRANCE
- ENCROACHMENT BARRIER

APPROVED	<input type="checkbox"/>	REFUSED	<input type="checkbox"/>
THIS	DAY OF	20	
ADAM BROWN, MANAGER DEVELOPMENT REVIEW RURAL PLANNING, INFRASTRUCTURE AND ECONOMIC DEVELOPMENT DEPARTMENT, CITY OF OTTAWA			

Notes

SURVEY: BY ANNIS O'SULLIVAN VOLLEBEKK LTD.

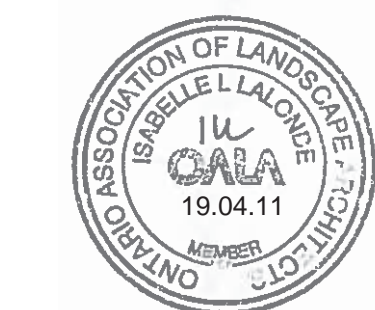
LEGAL DESCRIPTION: PART OF LOT 6, CONGRESSION 2, GEOGRAPHIC TOWNSHIP OF HUNTLEY, PART 1 ON 4R-11688 SAVE & EXCEPT PARTS 1-10 ON 4R-17391, SAVE AND EXCEPT PART 1-4 ON 4R-17194, CITY OF OTTAWA.

BENCHMARK: IRON BAR - ELEVATION = 109.52m
E 346686.57, N 5018043.47

3	REVISIONS AS PER COMMENTS	GM	ILL	19.04.11
2	REVISED SITE PLAN	ILL	ILL	18.12.20
1	ISSUED FOR CITY APPROVAL	LZ	ILL	18.09.19
Revision		By	Appd.	YYYY.MM.DD

File Name: 160410099-D8 JP Dwn. Chkd. Dgn. 18.06.05

Permit-Seal



Client/Project

THOMAS CAVANAGH CONSTRUCTION LIMITED
9094 CAVANAGH ROAD

2596 CARP ROAD
CONCRETE BATCHING PLANT
OTTAWA, ONTARIO

Title

OVERALL LANDSCAPE PLAN

Project No. 160410099
Drawing No. Sheet Revision
Scale 0 10 30 50m
1:1000

L100

1 of 3

3

Legend

- EXISTING VEGETATION TO REMAIN
- EXISTING VEGETATION AREA TO BE REMOVED
- EXISTING TREE TO BE REMOVED
- TEMPORARY TREE PROTECTION FENCE REFER TO DETAIL 1/L300
- PROPOSED DECIDUOUS TREES
- PROPOSED CONIFEROUS TREES
- PROPOSED SHRUB
- PROPOSED PLANTING BED
- 150mm TOPSOIL AND SEED MIXTURE TYPE 1
- 150mm TOPSOIL AND SEED MIXTURE TYPE 2
- PROPOSED WELL LOCATION
- PROPOSED BOLLARDS
- CONCRETE PAD
- ASPHALT AREA
- RIPRAP
- BUILDING ENTRANCE
- ENCROACHMENT BARRIER

APPROVED ☒ **REFUSED** ☐

THIS DAY OF 20

ADAM BROWN, MANAGER
DEVELOPMENT REVIEW RURAL
PLANNING, INFRASTRUCTURE AND ECONOMIC
DEVELOPMENT DEPARTMENT, CITY OF OTTAWA

Notes

SURVEY: BY ANNIS O'SULLIVAN VOLLEBEKK LTD.
LEGAL DESCRIPTION: PART OF LOT 6, CONCESSION 2, GEOGRAPHIC TOWNSHIP OF HUNTERVILLE PART 1 ON 4R-11656 SAVE & EXCEPT PARTS 1-10 ON 4R-17391, SAVE AND EXCEPT PART 1-4 ON 4R-17194, CITY OF OTTAWA.
BENCHMARK: IRON BAR - ELEVATION = 109.52m
E 346698.57, N 5018043.47

REVISIONS PER COMMENTS	GM	ILL	19.04.11
3			
2			
1			

File Name: 160410099-D8 JP 18.06.05
Dwn. Chkd. Dsgn. YY.MM.DD

Permit-Seal



Client/Project

THOMAS CAVANAGH CONSTRUCTION LIMITED
9094 CAVANAGH ROAD

2596 CARP ROAD
CONCRETE BATCHING PLANT
OTTAWA, ONTARIO

Title

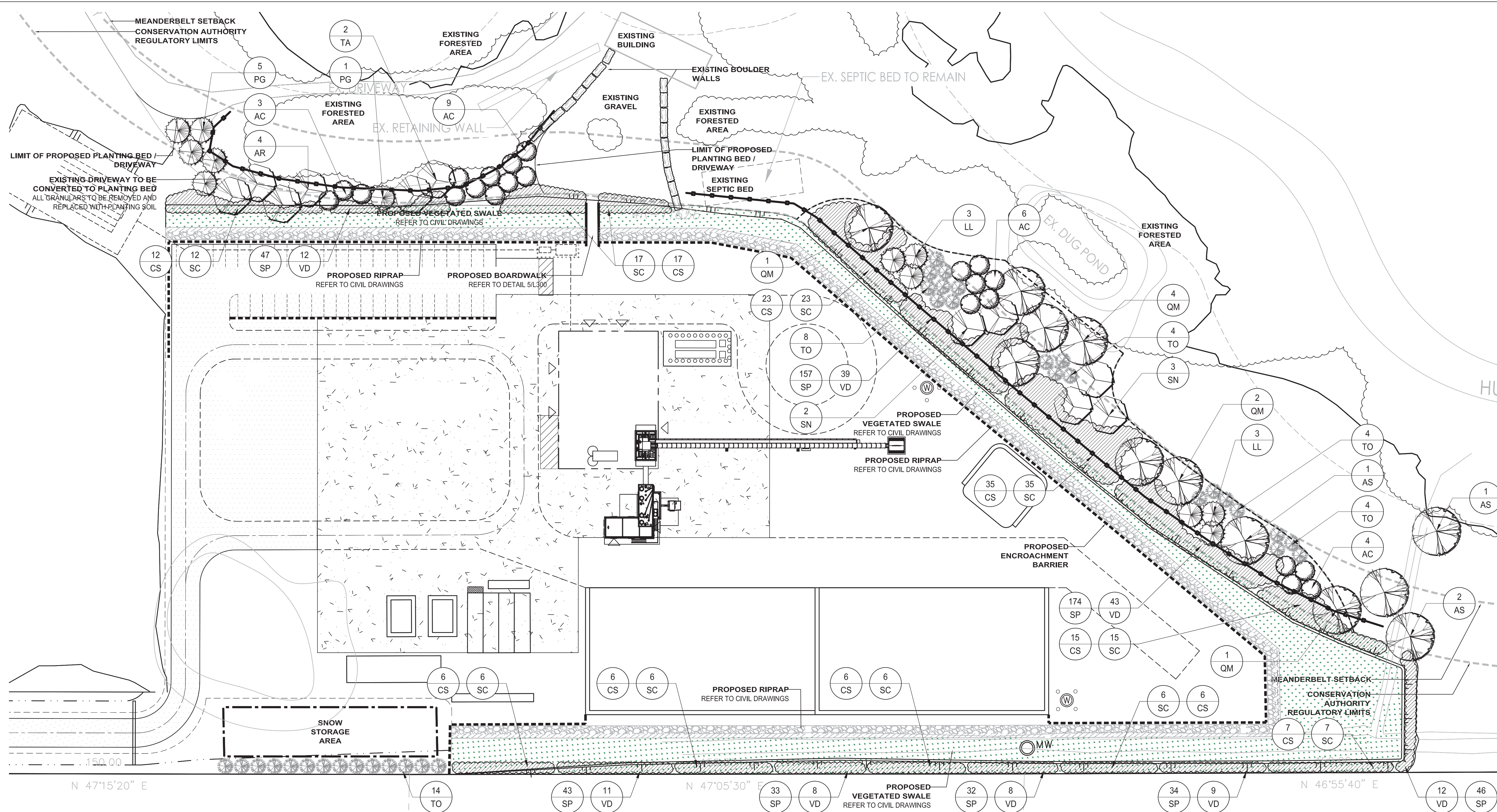
LANDSCAPE ENLARGEMENTS

Project No. 160410099
Drawing No. Sheet Revision
Scale 1:500 0 5 15 25m

L200

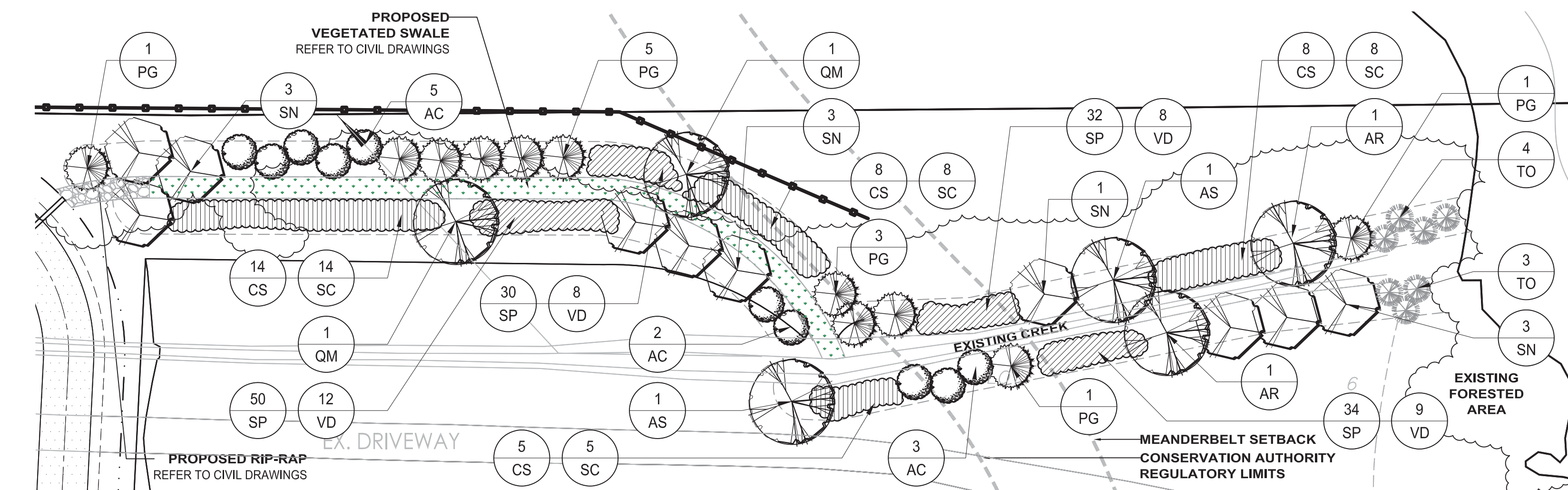
2 of 3

3



1 PLANT VEGETATED SWALE

1:500

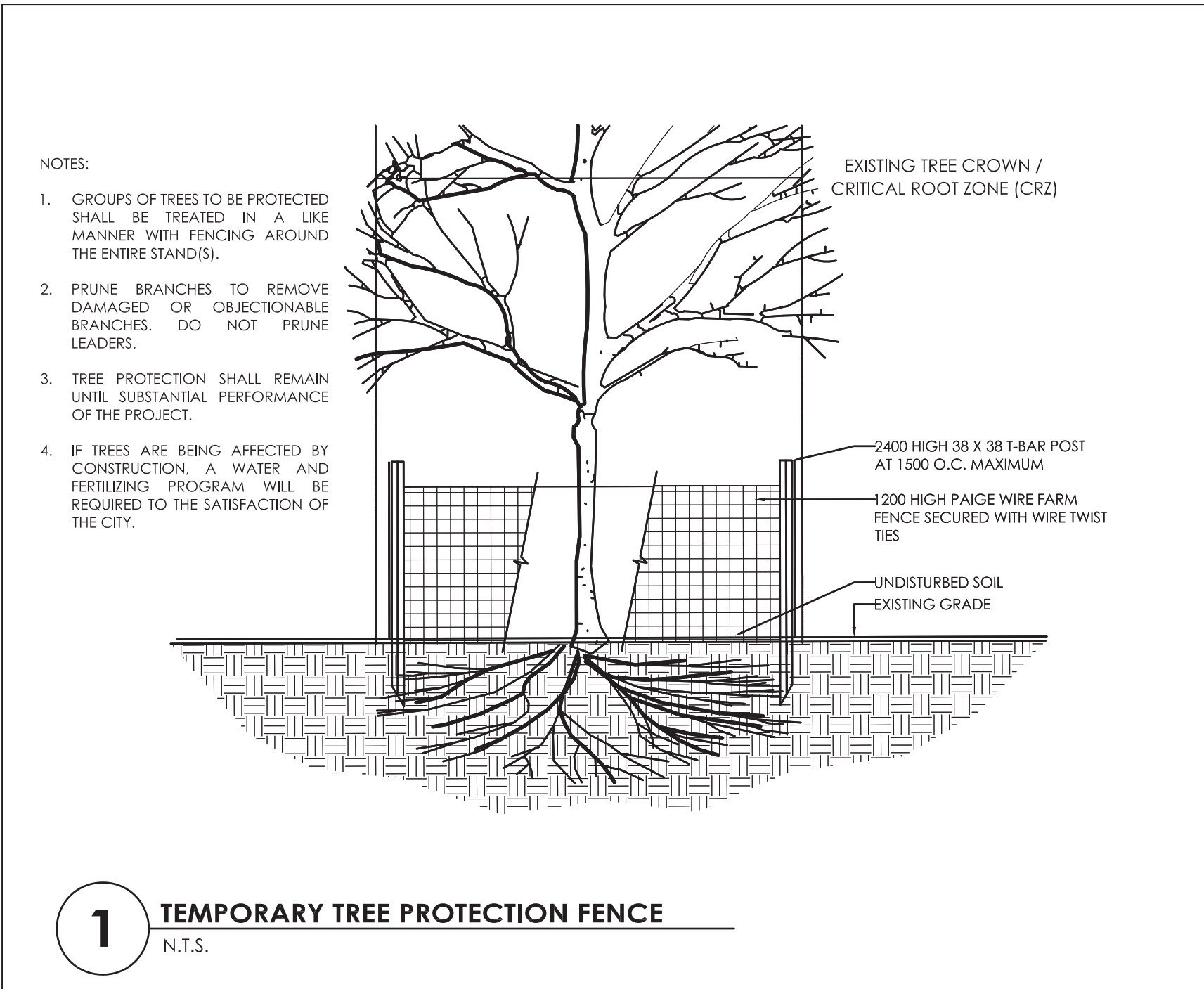


2 ACCESS ROAD VEGETATED SWALE

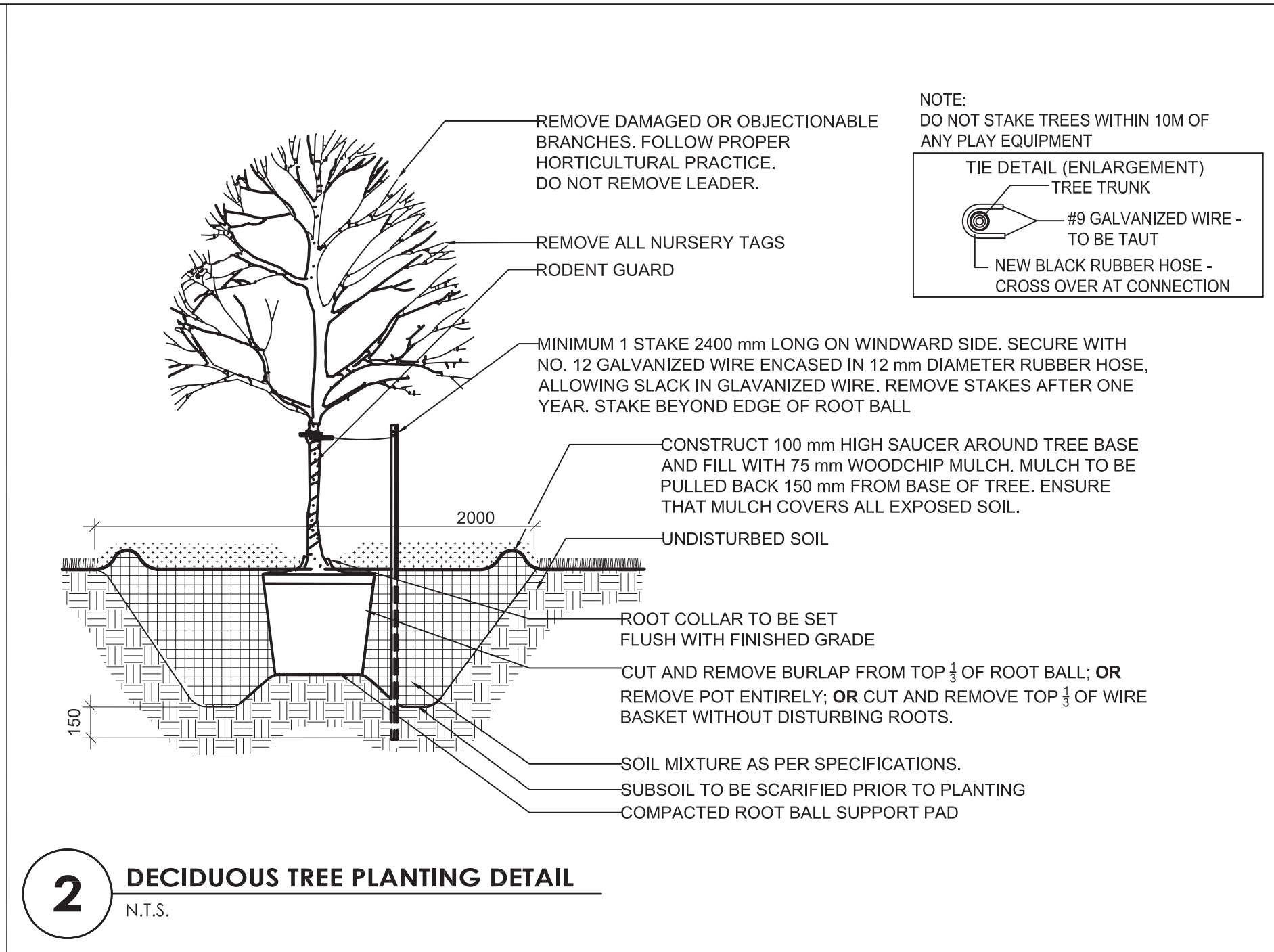
1:500

PLANT LIST

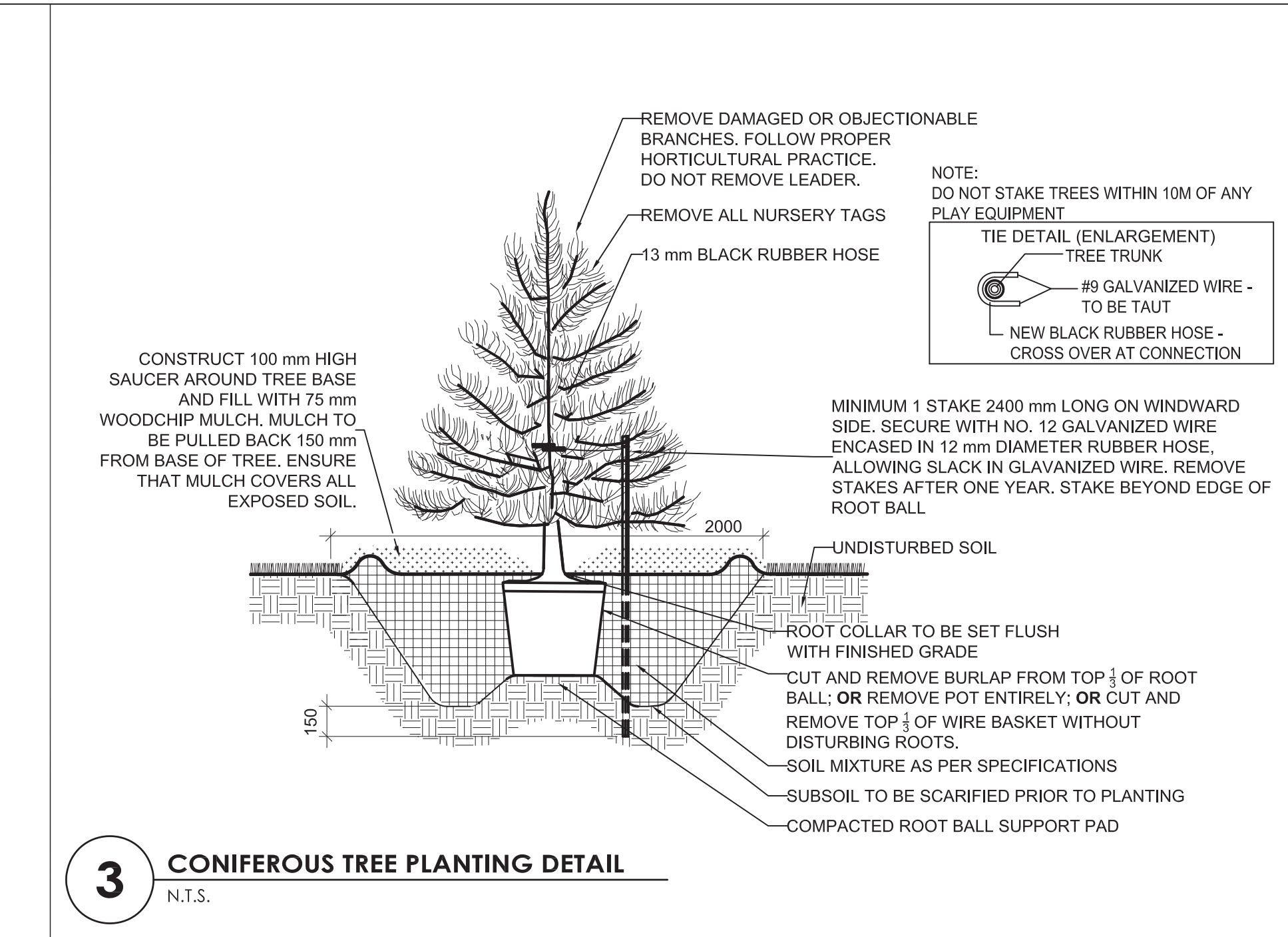
QTY	KEY	BOTANICAL NAME	COMMON NAME	SIZE	REMARKS
DECIDUOUS TREES - REFER TO DETAIL 2/L300					
6	AR	Acer rubrum	Red Maple	60 mm (cal.)	W.B.
6	AS	Acer saccharinum	Silver Maple	60 mm (cal.)	W.B.
32	AC	Amelanchier canadensis	Serviceberry	2000 mm (ht.)	W.B.; Clum Form
12	QM	Quercus macrocarpa	Bur Oak	60 mm (cal.)	W.B.
15	SN	Salix nigra	Black Willow	60 mm (cal.)	W.B.
2	TA	Tilia americana	Basswood	60 mm (cal.)	W.B.
CONIFEROUS TREES - REFER TO DETAIL 3/L300					
6	LL	Larix laricina	Tamarack	2000 mm (ht.)	W.B.; Plant at 5000 mm o/c
17	PG	Picea glauca	White Spruce	2000 mm (ht.)	W.B.; Plant at 4000 mm o/c
41	TO	Thuja occidentalis	Eastern White Cedar	2000 mm (ht.)	W.B.; Plant at 4000 mm o/c
DECIDUOUS SHRUBS - REFER TO DETAIL 4/L300					
168	CS	Cornus sericea	Red Osier Dogwood	500 mm (ht.)	C.G.; Plant at 2500 mm o/c
712	SP	Salix petiolaris	Slender Willow	500 mm (ht.)	C.G.; Plant at 1000 mm o/c
168	SC	Sambucus canadensis	Common Elderberry	500 mm (ht.)	C.G.; Plant at 2500 mm o/c
179	VD	Viburnum dentatum	Arrowwood Viburnum	500 mm (ht.)	C.G.; Plant at 2000 mm o/c



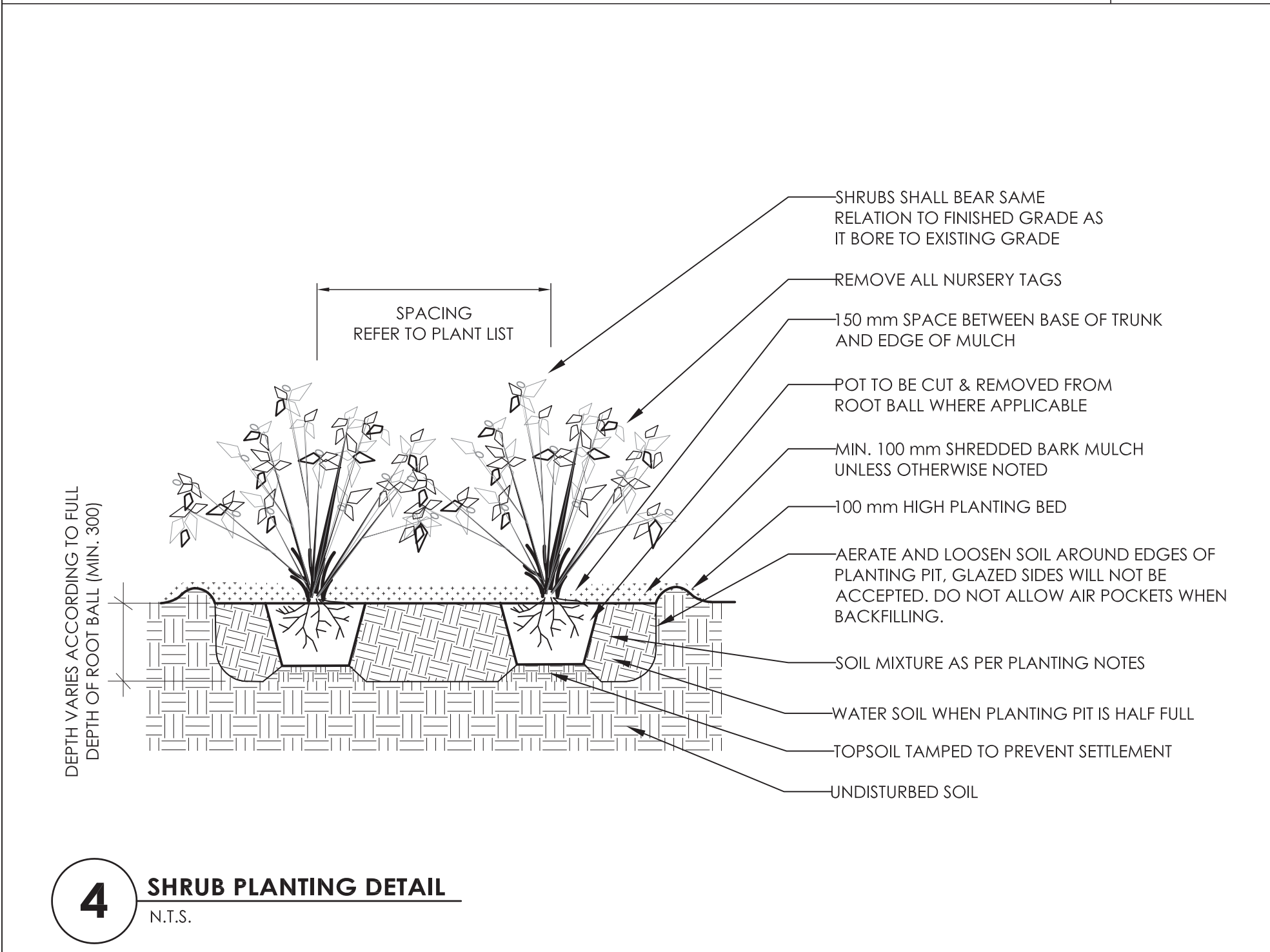
1 TEMPORARY TREE PROTECTION FENCE
N.T.S.



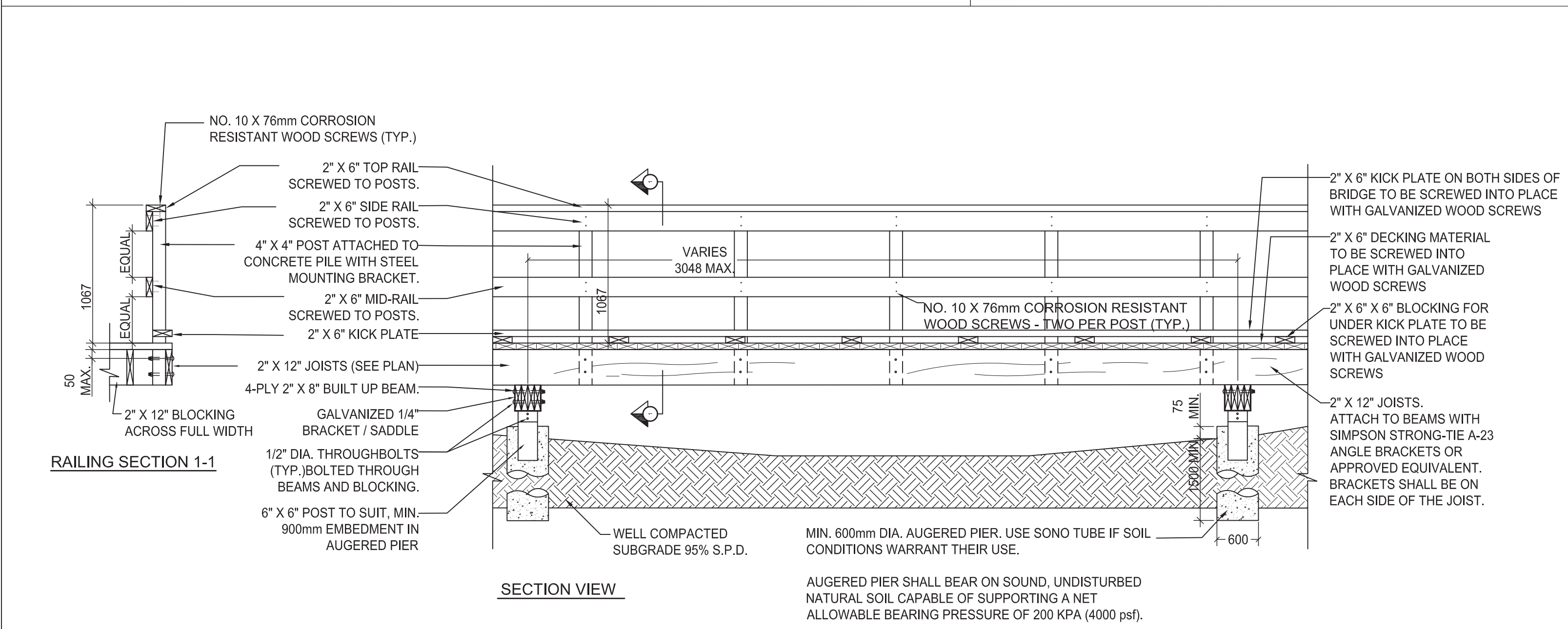
2 DECIDUOUS TREE PLANTING DETAIL
N.T.S.



3 CONIFEROUS TREE PLANTING DETAIL
N.T.S.

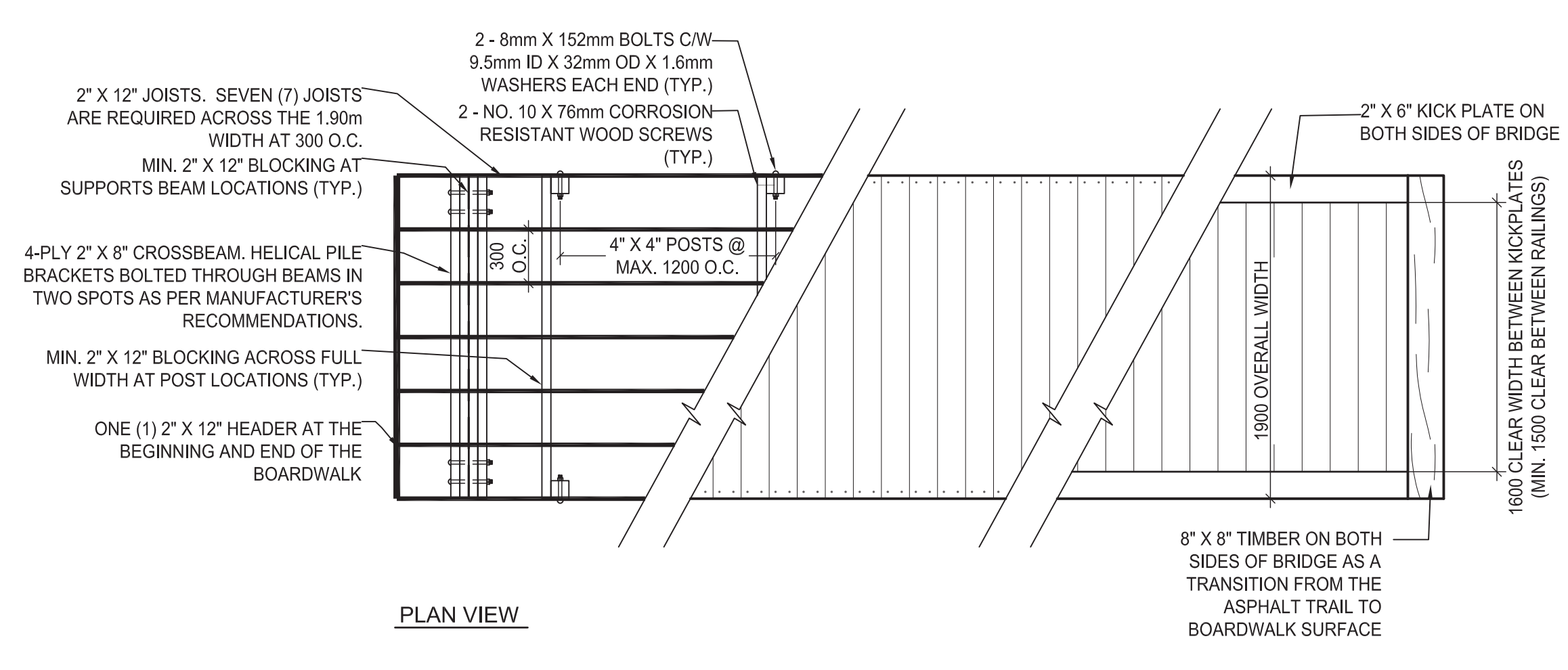


4 SHRUB PLANTING DETAIL
N.T.S.



5 BOARDWALK WITH AUGERED PILES
N.T.S.

- PLANTING NOTES**
- THE DETAILS ON THIS SHEET DO NOT REPRESENT ANY PARTICULAR SPECIES.
 - TREES AND SHRUBS AS INDICATED IN THE DETAILS REPRESENT BOTH CONIFEROUS AND DECIDUOUS SPECIES.
 - MATERIAL PLANTED IN GROUP SHALL BE SET IN CONTINUOUS PLANTING BEDS.
 - CENTRE LINE OF SHRUBS SHALL NOT BE CLOSER THAN 2.4m FROM BUILDING FACE TO PROTECT BUILDING FOOTINGS AND INSULATION.
 - PRUNING - TO SUIT SPECIES - PRUNE BRANCHES BY 1/3 TO REMOVE DAMAGED OR OBJECTIONABLE BRANCHES FOLLOWING PROPER HORTICULTURAL PRACTICE. DO NOT PRUNE LEADERS.
 - FIRMLY COMPACT BACKFILLED PLANTING MIXTURE TO ELIMINATE AIR POCKETS OR PREVENT SETTLEMENT.
 - PLANTING MATERIAL QUALITY STANDARDS:
 - ALL PLANT MATERIALS TO CONFORM TO THE CANADIAN NURSERY LANDSCAPE ASSOCIATION FOR VARIETY, SIZE AND CONDITION;
 - PLANT MATERIAL COLLECTED FROM WILD SOURCES WILL NOT BE ACCEPTED;
 - LANDSCAPE ARCHITECT RESERVES THE RIGHT TO REFUSE ACCEPTANCE OF ANY PLANT DISPLAYING POOR GROWTH HABITS, INJURY OR DISEASE;
 - ANY PLANTS THAT DO NOT CONFORM TO THE ABOVE STANDARDS WILL BE PROMPTLY REMOVED FROM THE SITE BY THE CONTRACTOR AND REPLACED WITH MATERIAL OF ACCEPTABLE QUALITY AT NO ADDITIONAL COST TO THE PROJECT.
 - TOPSOIL:
 - SOIL TEXTURE BASED ON THE CANADIAN SYSTEM OF SOIL CLASSIFICATION TO CONSIST OF:
 - CLAY: 14-20%
 - SILT: 0-35%
 - SAND: 45-70%
 - ORGANIC MATERIAL: 4-10%
 - pH: 6-8
 - SPREAD TOPSOIL TO FOLLOWING MINIMUM DEPTHS AFTER SETTLEMENTS UNLESS OTHERWISE NOTED ON DETAILS:
 - 500mm FOR SHRUB BEDS
 - 1000mm FOR TREE PLANTING



PLANTING NOTES

- THE DETAILS ON THIS SHEET DO NOT REPRESENT ANY PARTICULAR SPECIES.
- TREES AND SHRUBS AS INDICATED IN THE DETAILS REPRESENT BOTH CONIFEROUS AND DECIDUOUS SPECIES.
- MATERIAL PLANTED IN GROUP SHALL BE SET IN CONTINUOUS PLANTING BEDS.
- CENTRE LINE OF SHRUBS SHALL NOT BE CLOSER THAN 2.4m FROM BUILDING FACE TO PROTECT BUILDING FOOTINGS AND INSULATION.
- PRUNING - TO SUIT SPECIES - PRUNE BRANCHES BY 1/3 TO REMOVE DAMAGED OR OBJECTIONABLE BRANCHES FOLLOWING PROPER HORTICULTURAL PRACTICE. DO NOT PRUNE LEADERS.
- FIRMLY COMPACT BACKFILLED PLANTING MIXTURE TO ELIMINATE AIR POCKETS OR PREVENT SETTLEMENT.
- PLANTING MATERIAL QUALITY STANDARDS:
 - ALL PLANT MATERIALS TO CONFORM TO THE CANADIAN NURSERY LANDSCAPE ASSOCIATION FOR VARIETY, SIZE AND CONDITION;
 - PLANT MATERIAL COLLECTED FROM WILD SOURCES WILL NOT BE ACCEPTED;
 - LANDSCAPE ARCHITECT RESERVES THE RIGHT TO REFUSE ACCEPTANCE OF ANY PLANT DISPLAYING POOR GROWTH HABITS, INJURY OR DISEASE;
 - ANY PLANTS THAT DO NOT CONFORM TO THE ABOVE STANDARDS WILL BE PROMPTLY REMOVED FROM THE SITE BY THE CONTRACTOR AND REPLACED WITH MATERIAL OF ACCEPTABLE QUALITY AT NO ADDITIONAL COST TO THE PROJECT.
- TOPSOIL:
 - SOIL TEXTURE BASED ON THE CANADIAN SYSTEM OF SOIL CLASSIFICATION TO CONSIST OF:
 - CLAY: 14-20%
 - SILT: 0-35%
 - SAND: 45-70%
 - ORGANIC MATERIAL: 4-10%
 - pH: 6-8
 - SPREAD TOPSOIL TO FOLLOWING MINIMUM DEPTHS AFTER SETTLEMENTS UNLESS OTHERWISE NOTED ON DETAILS:
 - 500mm FOR SHRUB BEDS
 - 1000mm FOR TREE PLANTING

Copyright Reserved

The Contractor shall verify and be responsible for all dimensions. DO NOT scale the drawing - any errors or omissions shall be reported to Stantec without delay.

The Copyrights to all designs and drawings are the property of Stantec. Reproduction or use for any purpose other than that authorized by Stantec is forbidden.

Legend

Notes

APPROVED	REFUSED
THIS DAY OF	20

ADAM BROWN, MANAGER
DEVELOPMENT REVIEW RURAL
PLANNING, INFRASTRUCTURE AND ECONOMIC
DEVELOPMENT DEPARTMENT, CITY OF OTTAWA

3	REVISED AS PER COMMENTS	GM	ILL	19.04.11
2	REVISED SITE PLAN	ILL	ILL	18.12.20
1	ISSUED FOR CITY APPROVAL	LZ	ILL	18.09.19

Revision

By	Appd.	YYYY.MM.DD
----	-------	------------

File Name: 160410099-D8

JP	18.06.05		
Dwn.	Chkd.	Dsgn.	YY.MM.DD

Permit-Seal

Client/Project

THOMAS CAVANAGH CONSTRUCTION LIMITED
9094 CAVANAGH ROAD

2596 CARP ROAD
CONCRETE BATCHING PLANT
OTTAWA, ONTARIO

Title

LANDSCAPE DETAILS

Project No.	Scale	
160410099	VARIES	
Drawing No.	Sheet	Revision
L300	3 of 3	3