



SOUTH ELEVATION



NORTH ELEVATION



EAST ELEVATION



WEST ELEVATION

BLOCKS 6

COLOUR PALETTE #1

- 01 ASPHALT SHINGLES: IKO CAMBRIDGE, WEATHERED WOOD
- 02 PREFINISHED ALUMINUM FASCIA & FLASHINGS AND WINDOWS (CHESTNUT BROWN)
- 03 BEIGE BRICK: BRAMPTON, PREMIER SIZE, BEAUPORT
- 04 HARDIE BOARD ACCENT PANEL C/W ALUMINUM TRIM PIECES (AUTUMN TAN)
- 05 SAGIPER SAGIWALL SIDING (KNOTTY MAPLE REF#79)
- 06 ALUMINUM STAIRS AND GUARDS C/W GLASS INSERTS AND CONCRETE TREADS IN METAL PANS (CHESTNUT BROWN)

MATERIALS LEGEND

- | | |
|----|--|
| 07 | ALUMINUM BALCONY RAILING <i>clw</i> PICKETS
@ 100mm o.c. MAX (CHESTNUT BROWN)
AND OPEN RISER PT WOOD STEPS |
| 08 | ORNAMENTAL METAL RODS (STAINLESS STEEL) |
| 09 | PRE-FINISHED METAL PANELS BETWEEN WINDOWS
(CHESTNUT BROWN TO MATCH WINDOWS) |
| 10 | ENTRY DOORS & ACCENT PANELS
BENJAMIN MOORE (FIREBALL ORANGE) |
| 11 | GARAGE AND M&E DOORS BENJAMIN MOORE
(STARDUST) |

COLOUR PALETTE #2

- 01 ASPHALT SHINGLES: IKO CAMBRIDGE, CHARCOAL GREY
- 02 PREFINISHED ALUMINUM FASCIA & FLASHINGS AND WINDOWS (JELDWEN SABLE)
- 03 GRAY BRICK: BRAMPTON, PREMIER SIZE, GRAY VELOUR
- 04 HARDIE BOARD ACCENT PANEL C/W ALUMINUM TRIM PIECES (COBBLE STONE)
- 05 SAGIPER SAGIWALL SIDING (HAZEL OAK REF#6)
- 06 ALUMINUM STAIRS AND GUARDS C/W GLASS INSERTS AND CONCRETE TREADS IN METAL PANS (CHARCOAL)

MATERIALS LEGEND

- | | |
|----|--|
| 07 | ALUMINUM BALCONY RAILING <i>c/w</i> PICKETS
@ 100mm o.c. MAX (CHARCOAL)
AND OPEN RISER TP WOOD STEPS |
| 08 | ORNAMENTAL METAL RODS (STAINLESS STEEL) |
| 09 | PRE-FINISHED METAL PANELS BETWEEN WINDOWS
(SABLE TO MATCH WINDOWS) |
| 10 | ENTRY DOORS & ACCENT PANELS
BENJAMIN MOORE (SMOLDERING RED) |
| 11 | GARAGE AND M&E DOORS BENJAMIN MOORE
(TAOS TAUPE) |

IT IS THE RESPONSIBILITY OF THE APPROPRIATE CONTRACTOR TO CHECK AND VERIFY ALL DIMENSIONS ON SITE AND TO REPORT ALL ERRORS AND/OR OMISSIONS TO THE ARCHITECT.

ALL CONTRACTORS MUST COMPLY WITH ALL PERTINENT CODES AND BY-LAWS.

THIS DRAWING MAY NOT BE USED FOR CONSTRUCTION UNTIL SIGNED BY THE ARCHITECT.

DO NOT SCALE DRAWINGS.

NOTATION SYMBOLS:

-
- Legend for drawing notes and assembly types:
- ① INDICATES DRAWING NOTES, LISTED ON EACH SHEET.
 - ◇ INDICATES ASSEMBLY TYPE; REFER TO TYPICAL ASSEMBLIES SCHEDULE.
 - ② INDICATES WINDOW TYPE; REFER TO WINDOW ELEVATIONS AND DETAILS ON A900 SERIES.
 - ③ INDICATES DOOR TYPE; REFER TO DOOR SCHEDULE AND DETAILS ON A900 SERIES.
- DETAIL NUMBER
- ④ TITLE
- SCALE
- DETAIL REFERENCE PAGE
- DETAIL CROSS REFERENCE PAGE

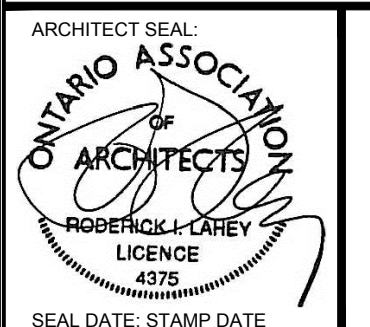
GENERAL NOTES:

- (A) REFER TO TYPICAL ASSEMBLIES SHEET FOR WALL, PARTITION, ROOF CEILING & FLOOR TYPES.
- (B) FOR DOOR TYPES AND HARDWARE REQUIREMENTS REFER TO DOOR SCHEDULE ON A900 SERIES.
- (C) ALL INTERIOR DIMENSIONS ARE TAKEN FROM THE FACE OF STUD
- (D) ALL EXTERIOR DIMENSIONS ARE TAKEN FROM THE FACE OF STUD
- (E) ALL EXTERIOR WALLS ARE TO BE TYPE 'W1' UNLESS NOTED OTHERWISE
- (F) ALL INTERIOR PARTITIONS ARE TO BE TYPE 'P1' UNLESS NOTED OTHERWISE
- (G) ALL REINFORCED CONCRETE SUSPENDED SLABS, COLUMNS & BEAMS HAVE A MIN. FIR OF 1.5 HRS (AS DETERMINED BY NBC SB-2) UNLESS OTHERWISE STATED.

[illegible]

7	ISSUED FOR SPC PHASE 3-2 COMMENT RESPONSE	Apr. 2, 19
6	ISSUED FOR SITE PLAN CONTROL PHASE 3-2	Mar. 5, 19
5	ISSUED FOR SITE PLAN CONTROL PHASE 2	Dec. 06, 18
4	ISSUED FOR SITE PLAN CONTROL PHASE 2	Oct. 31, 18
3	ISSUED FOR MINOR VARIANCE BLOCK 6 & 7	Apr. 10, 18
2	ISSUED FOR SITE PLAN CONTROL REVISED CONCEPT	Nov. 13, 17
1	ISSUED FOR SITE PLAN CONTROL	June 06, 17
No.	DESCRIPTION	DATE

REVISIONS:



NORTH ARROW:

CLIENT:



ARCHITECT:

rla / architecture
56 Beech Street, Ottawa, Ontario K1S 3J6
t.613.724.9932 f.613.724.1209 www.rodericklahey.ca

PROJECT TITLE:



OTTAWA ONTARIO

SHEET TITLE:

BLOCK 6
BUILDING ELEVATIONS
PHASE 3-2

DRAWN:

RV

SCALE:

1 : 100

CHECKED:

LL

SHEET No.

A

A-03