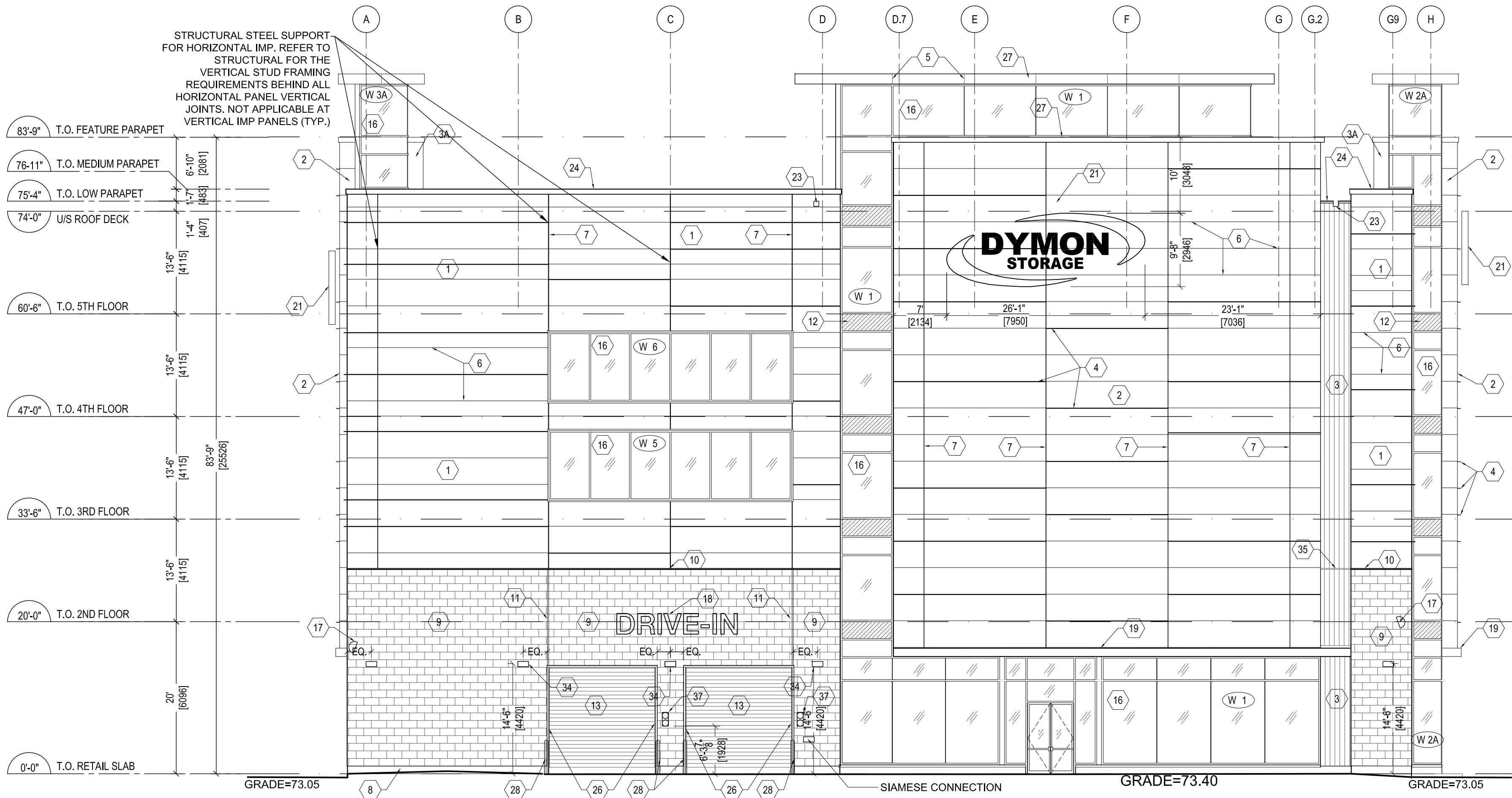


1 NORTH ELEVATION

A-201 SCALE: 3/32" = 1'-0"



2 WEST ELEVATION

A-201 SCALE: 3/32" = 1'-0"

APPROVED
By Don Herweyer at 11:29 am, Apr 04, 2019

Don Herweyer

DON HERWEYER, MCIP, RPP
MANAGER, DEVELOPMENT REVIEW - SOUTH
PLANNING, INFRASTRUCTURE & ECONOMIC
DEVELOPMENT DEPARTMENT, CITY OF OTTAWA

LEGEND

- 1 PRE-MANUFACTURED INSULATED METAL PANEL SYSTEM. MINI MICRO HORIZONTAL ORIENTATION. COLOUR: PEWTER
- 2 PRE-MANUFACTURED INSULATED METAL PANEL SYSTEM. MINI MICRO HORIZONTAL ORIENTATION. COLOUR: MEDIUM BRONZE
- 3A PRE-MANUFACTURED INSULATED METAL PANEL SYSTEM. SHADOWLINE VERTICAL ORIENTATION. COLOUR: PEWTER
- 3 PRE-MANUFACTURED INSULATED METAL PANEL SYSTEM. SHADOWLINE VERTICAL ORIENTATION. COLOUR: PEWTER
- 4 KINGS PAN KARRIER FINIS
- 5 PREFINISHED METAL FLASHING JOINT
- 6 TYPICAL IMP JOINT. REVEALS AS PER MANUFACTURER'S RECOMMENDATIONS
- 7 1/2" VERTICAL REVEAL JOINT. FACTORY FOLDED C/W TRIMLESS ENDS AND RECESSED RUBBER GASKET IN IMP SYSTEM. METAL REVEAL JOINT. REVEALS AS PER MANUFACTURER'S RECOMMENDATIONS-SEE DETAIL 8/A-501
- 8 POURED CONCRETE
- 9 11 5/8" X 23 5/8" X 3 5/8" ABRASION ADHAR LUMINOUS ARCHITECTURAL MASONRY UNIT. PATTERN: SERA VENEZ. FINISH: FINE DRESSED. RUNNING BOND (REFER TO SPECIFICATIONS)
- 10 PREFINISHED METAL FLASHING C/W DRIP EDGE, COLOUR SLATE GRAY TBC. SEE DETAIL 5/A-510
- 11 MASONRY EXPANSION JOINT ROPED AND CAULKED. COLOUR TO BE CONFIRMED
- 12 SPANDREL GLAZING C/W INSULATED BACK PANEL
- 13 HIGH SPEED ROLL-UP OVERHEAD DOOR C/W MOTOR, TRACK AND HARDWARE
- 14 INSULATED HOLLOW METAL DOOR (REFER TO SPECIFICATIONS). COLOUR TO BE CONFIRMED
- 15 INSULATED OVERHEAD DOOR COMPLETE WITH TRACK & HARDWARE (REFER TO SPECIFICATIONS). COLOUR TO BE CONFIRMED
- 16 CURTAIN WALL GLAZING IN THERMALLY BROKEN ANODIZED ALUMINUM STOREFRONT FRAMING SYSTEM. FRAME COLOUR: BRONZE ANODIZED (EXT). SEE DETAILS & SCHEDULES
- 17 OUTDOOR CAMERAS
- 18 INTERNALLY LIT SIGNAGE. PROVIDE POWER SUPPLY AND 3/4" THICK EXTERIOR GRADE PLYWOOD FOR SIGNAGE MOUNTING. G.C. TO PROVIDE SHOP DRAWINGS.
- 19 PREFINISHED METAL CANOPY COLOUR: PEWTER GAUGE TO BE CONFIRMED. REFER TO SECTION DETAILS 4 & 5/A-512
- 20 RESERVED
- 21 INTERNALLY LIT SIGNAGE. PROVIDE BLOCKING AND POWER G.C. TO PROVIDE SHOP DRAWINGS. REFER TO DETAILS FOR SIGNAGE INSTALLATION
- 22 DOCK SEAL
- 23 PREFIN METAL SCUPPER. SEE DETAIL 6/A-511 & SIM 4/A-511
- 24 CONTINUOUS BENT METAL CAP. 22 GA. PREFINISHED METAL C/W HIDDEN FASTENERS. COLOUR TO BE CONFIRMED
- 25 PREFINISHED METAL DRIP FLASHING. PAINT COLOUR TO MATCH ADJACENT EXTERIOR FINISH TBC
- 26 HOT DIPPED GALVANIZED BENT STEEL PLATE AROUND 3 SIDES OF OPENING. SEE DETAILS
- 27 CONTINUOUS BENT METAL CAP. 22 GA. PREFINISHED METAL C/W HIDDEN FASTENERS. COLOUR: PEWTER. SEE DETAILS POS 342, 343, 344
- 28 6" DIAMETER CONCRETE FILLED STEEL PROTECTION BOLLARD. 34" HIGH ABOVE GRADE
- 29 SIAMESE CONNECTION REFER TO MAKE MAX 900mm MIN 300mm ABOVE GRADE
- 30 HOT DIPPED GALVANIZED STEEL GUARDRAIL AT LOADING RAMP. PAINTED YELLOW
- 31 HOT DIPPED GALVANIZED STEEL WALL PROTECTION. PAINTED YELLOW
- 32 MECHANICAL LOWER. PREFIN METAL. COLOUR TO MATCH WALL FINISH. REFER TO MECHANICAL
- 33 RESERVED
- 34 EXTERIOR WALL PAK LIGHT. REFER TO ELECTRICAL
- 35 PREFINISHED METAL IMP STACK JOINT COVER TRIM. COLOUR TO BE CONFIRMED
- 36 PROVIDE POWER FOR SIGNAGE. CONFIRM WITH SIGN SUPPLIER FOR POWER REQUIREMENTS
- 37 TRAFFIC LIGHTS. REFER TO ELECTRICAL

1. Contractor must verify all job dimensions, all drawings, details, specifications and report any discrepancies to owners before proceeding with work.
2. All drawings and specifications are instruments of service and the property of the architects which must be returned at the completion of the work, and may not be reproduced without their written permission.

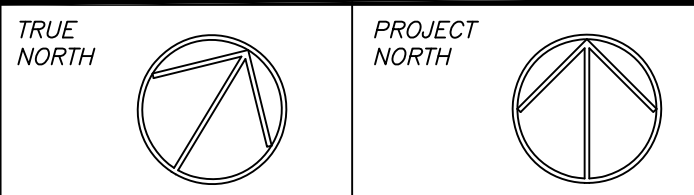
ref	description	date
6	FOR SPC. RESUBMISSION	2019 02 22
5	Issued for Revision to Permit and Tender	2018 12 20
4	Issued for coordination	2018 10 01
3	Issued for discussion	2018 07 20
2	Issued for coordination	2018 06 01
1	ISSUED FOR PERMIT	2018 04 27

revisions



DESIGN ARCHITECT	TACT Architecture Inc. 660R College St (Rear Lane) Toronto ON M6G 1B8 tel: (416) 516 1499 email: info@tactdesign.ca
STRUCTURAL ENGINEER	Cleland Jardine Engineering Ltd. 200-580 Terry Fox Drive, Kanata ON K2L 4B9 tel: (613) 591-1553 fax: (613) 591-1703 e-mail: mail@clelandjardine.com
MECHANICAL/ELECTRICAL	Goodkey Weedmark Consulting Engineers 1688 Woodward Dr. Ottawa ON K2C 0P9 tel: (613) 727-5111 fax: (613) 727-5115 web: www.gwal.com e-mail: info@gwal.com
CIVIL ENGINEER	J. L. Richards & Associates Ltd. 864 Lady Ellen Place, Ottawa ON K1Z 5M2 tel: (613) 613-728-3571 www.jrichards.ca
PLANNING & URBAN DESIGN	Fotenn 223 McLeod Street, Ottawa ON K2P 0Z8 tel: (613) 730-5709 fax: (613) 730-1136 www.fotenn.com

owner:
Dymon Capital Corporation
2-1830 Walkley Road
Ottawa ON K1H 8K3
tel: 613-247-0888 fax: 613-247-7730



architect	nicholas caragianis architect inc.	137 Pamela Street, Ottawa, ON K1S 3K9 t: 613 937 6801 f: 613 937 8289 e: info@ncarchitect.ca www.ncarchitect.ca
-----------	------------------------------------	--

project & location
DYMION SELF-STORAGE
851 INDUSTRIAL AVENUE
OTTAWA, ONT.

CITY FILE NUMBER

title of drawing

NORTH ELEVATION
WEST ELEVATION

scale	3/32" = 1'-0"	A-201
date	JUL 2017	
drawn by	CT/AA	