

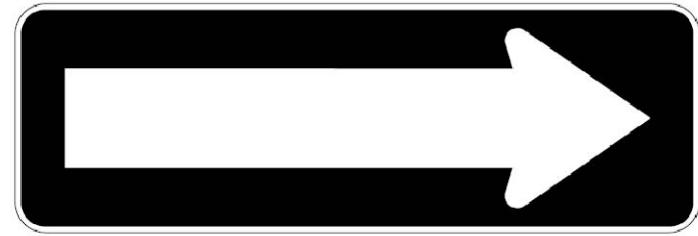


SUPPLY AND INSTALL 12" X 24"  
NO-ENTRY SIGN  
LOCATIONS AS PER SITE PLAN TO BE  
SUPPORTED BY U CHANNEL POST MIN.  
5" TO MIDDLE OF SIGN

12 NO ENTRY SIGN

A-101 N/A

### ONE-WAY Sign



Rb-21 30 cm x 90 cm  
Rb-121 60 cm x 180 cm  
Font N/A  
Colour Legend & Border – White Reflective  
Background – Black

11 ONE-WAY SIGN

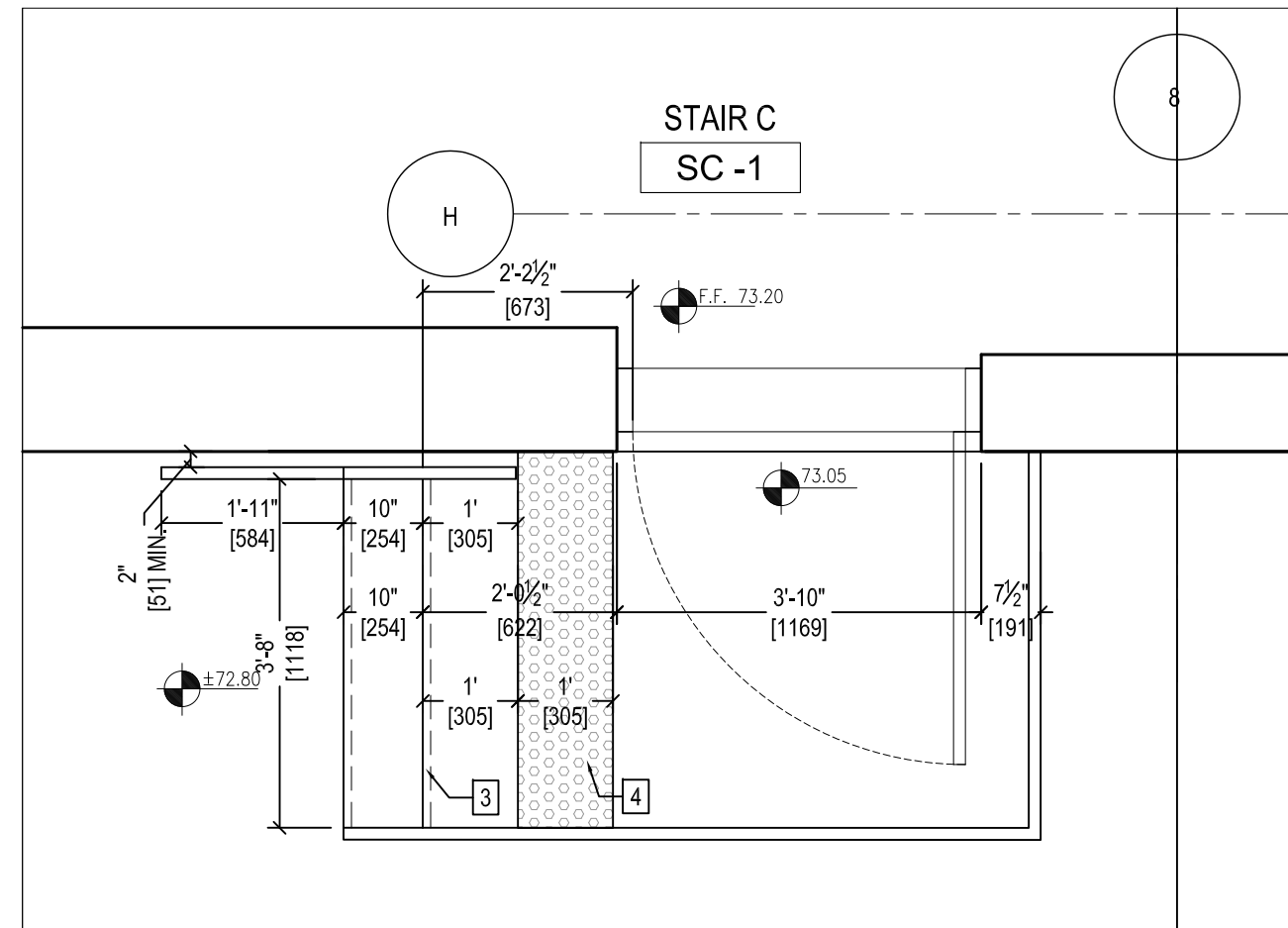
A-101 N/A



SUPPLY AND INSTALL 12" X 18" FIRE  
ROUTE & 12" X 12" NO PARKING SIGNS  
LOCATIONS AS PER SITE PLAN SIGNS  
TO BE SUPPORTED BY U CHANNEL  
POST MIN. 5" TO MIDDLE OF SIGN

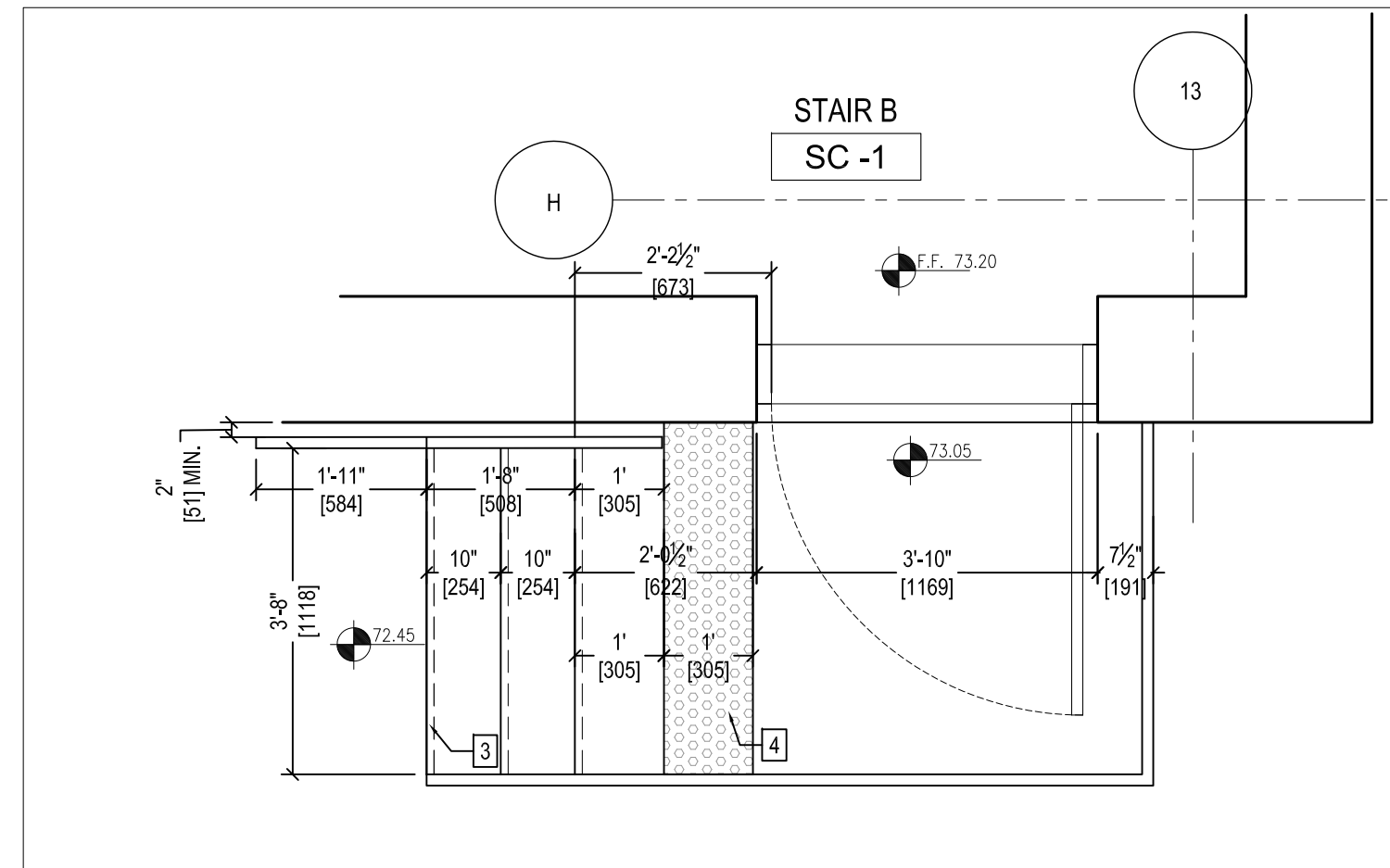
10 FIRE ROUTE & NO PARKING SIGNAGE

A-101 N/A



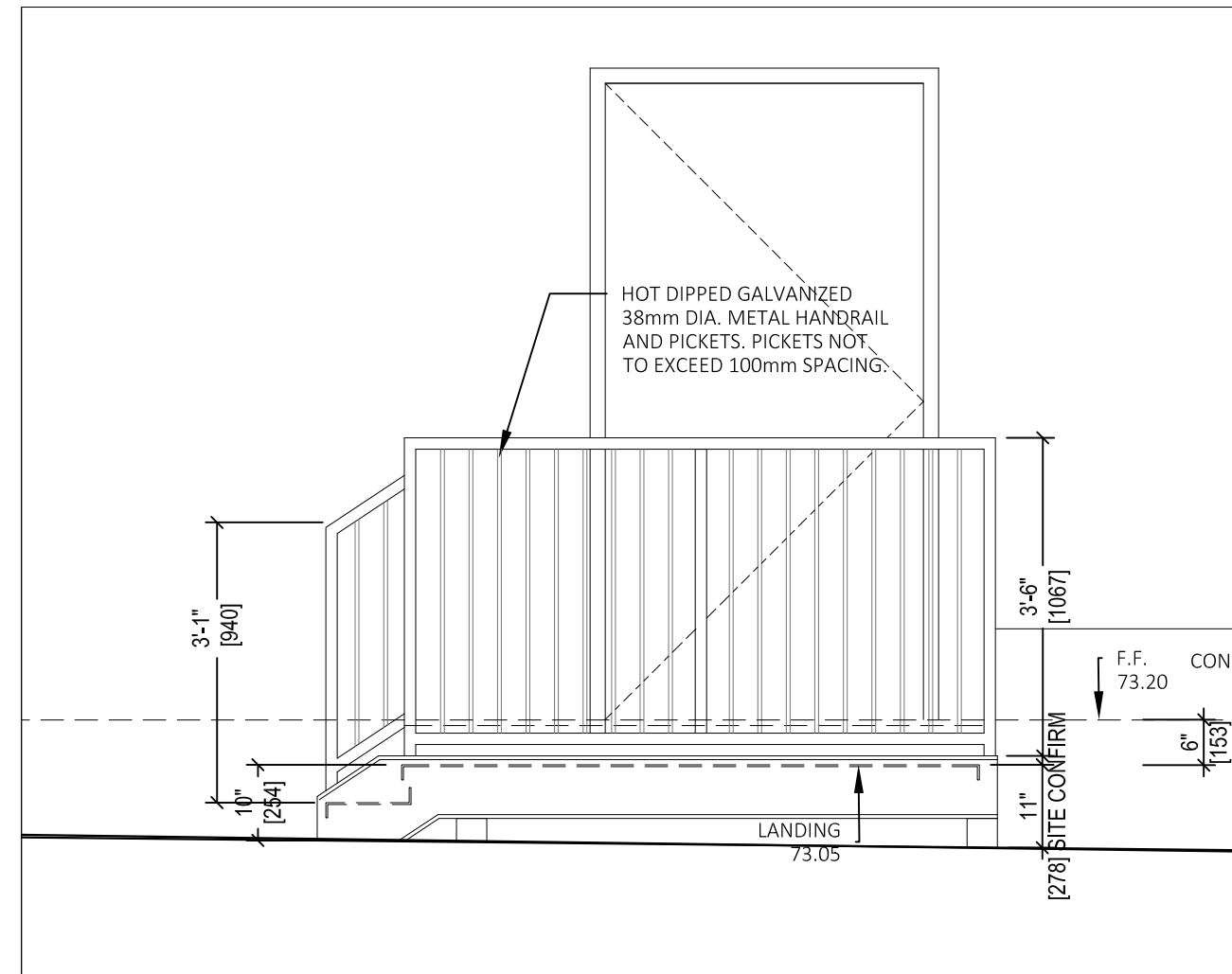
4 EXT.METAL STAIR-PLAN - STAIR C

A-101 1/2"=1'-0"



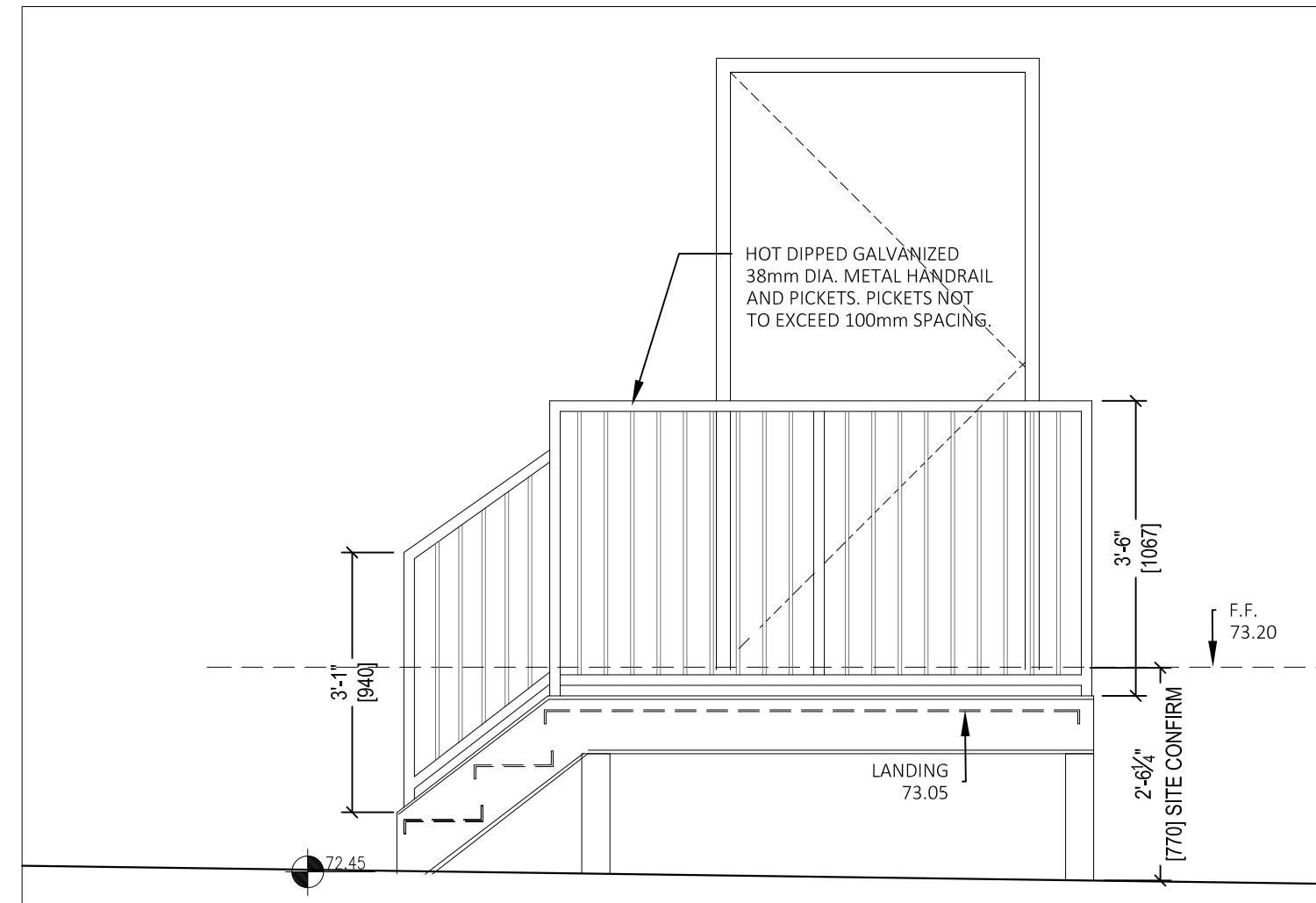
5 EXT.METAL STAIR-PLAN - STAIR B

A-101 1/2"=1'-0"



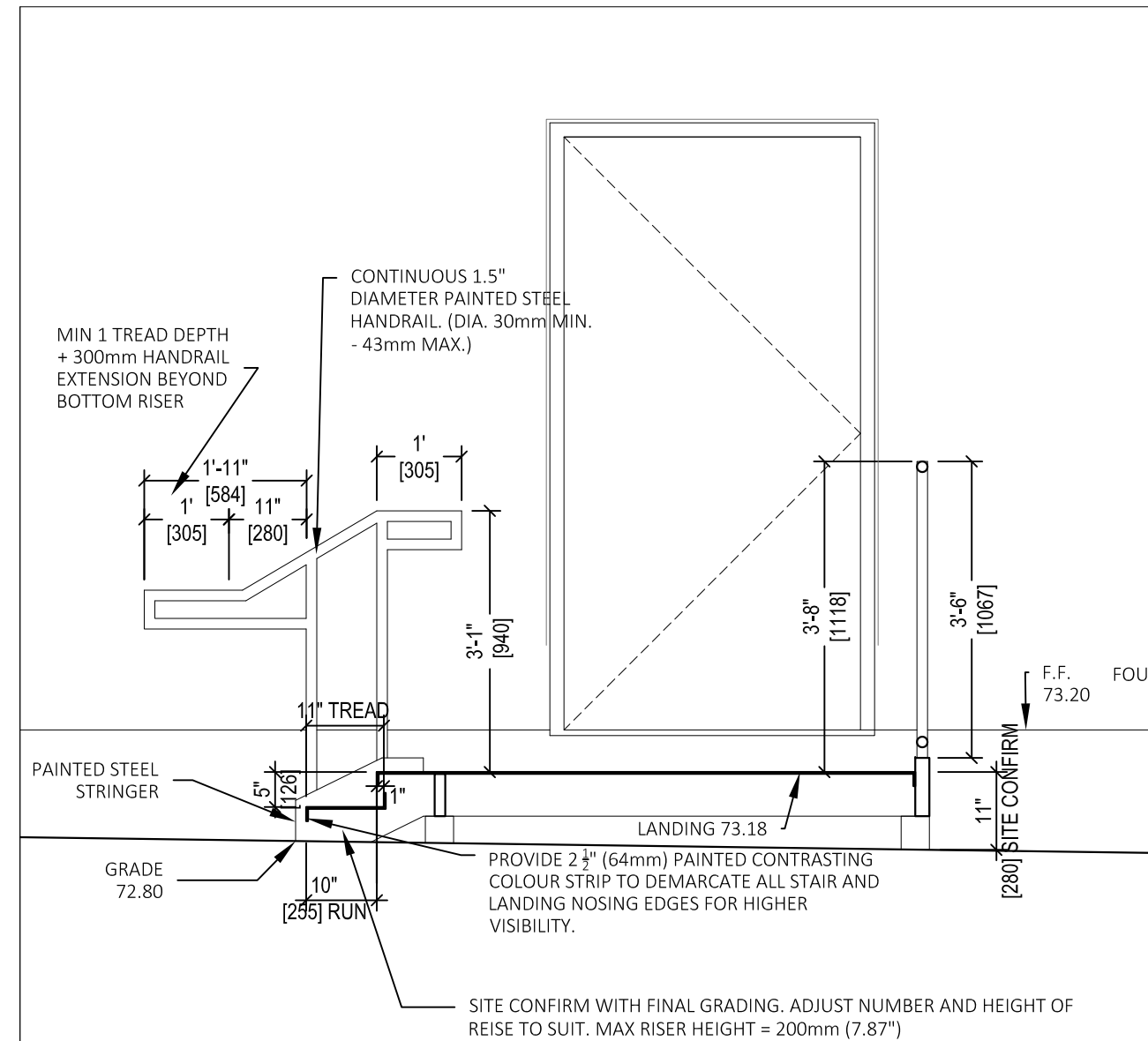
6 EXT.METAL STAIR- ELEV- STAIR C

A-101 1/2"=1'-0"



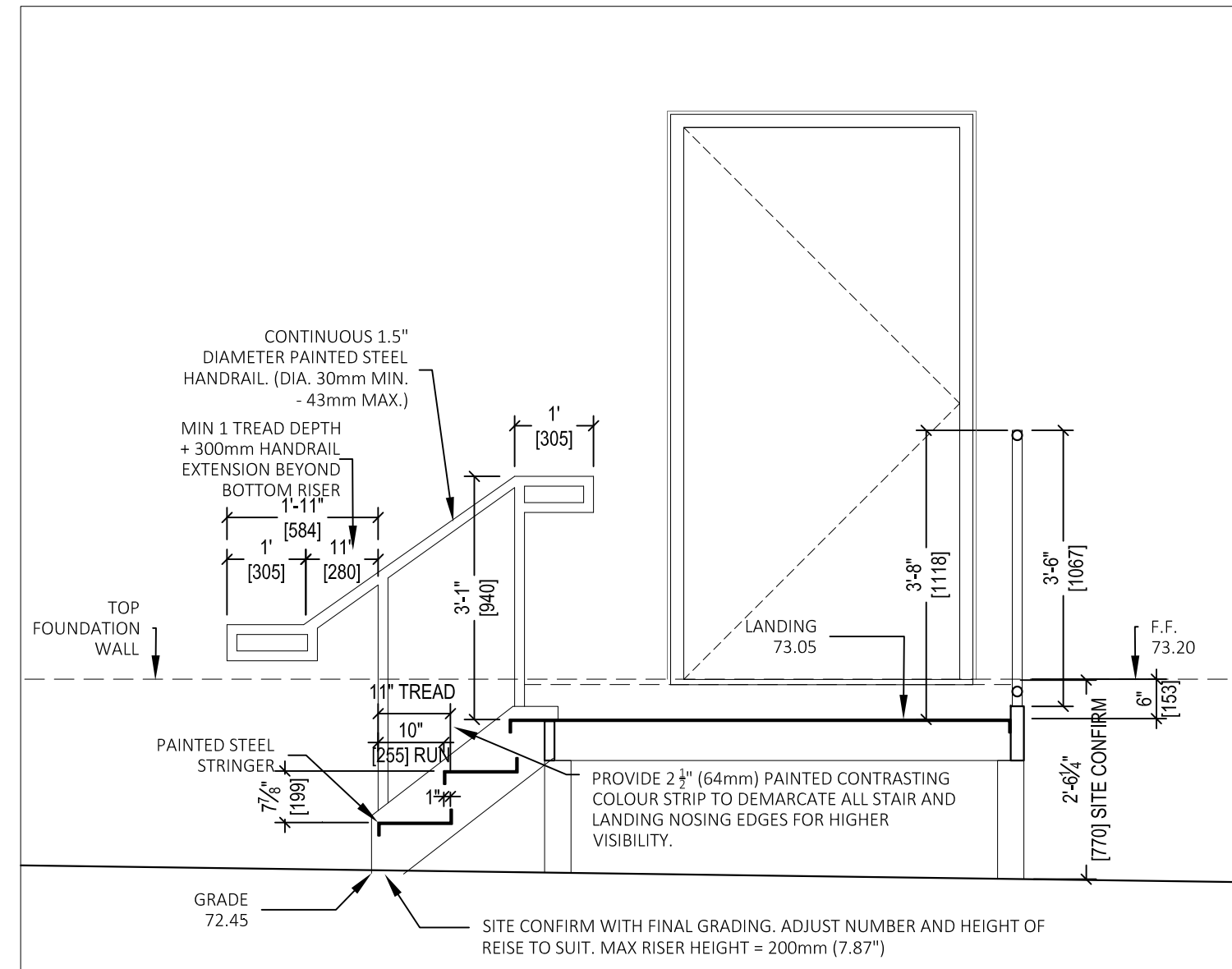
7 EXT.METAL STAIR- ELEV- STAIR B

A-101 1/2"=1'-0"



8 EXT.METAL STAIR- SECTION - STAIR C

A-101 1/2"=1'-0"



9 EXT.METAL STAIR- SECTION - STAIR B

A-101 1/2"=1'-0"

### GENERAL NOTES FOR STAIRS:

1. PROVIDE SHOP DRAWINGS STAMPED AND SIGNED BY A STRUCTURAL ENGINEER REGISTERED IN THE PROVINCE OF ONTARIO FOR ALL STAIR/LADDER, HANDRAIL & GUARD DESIGN, ANCHORS, CONNECTIONS & FASTENINGS AS PER APPLICABLE CODES. PRIOR TO CONSULTANT REVIEW AND FABRICATION, STAIR SHOP DRAWINGS TO BE INCLUDED IN STRUCTURAL STEEL SHOP DRAWINGS PACKAGE.
2. ALL STAIR TREADS TO BE FINISHED WITH STEEL CHECKER PLATE/DIAMOND PLATING.ENSURE COEFFICIENT OF FRICTION MINIMUM 0.85.
3. PROVIDE 2" (64mm) PAINTED CONTRASTING COLOUR STRIP TO DEMARCAT ALL STAIR LANDING AND NOSING EDGES FOR HIGHER VISIBILITY. (COLOUR TO BE DETERMINED)
4. TACTILE ATTENTION INDICATORS AT ALL LANDINGS TO START ONE TREAD DEPTH BACK FROM EDGE OF TOP STAIR. 1" (305mm) MIN. AND 2" (610mm) MAX. DEPTH. (COLOUR TO BE DETERMINED)
5. PAINTED HOT DIPPED GALVANIZED STEEL GUARDRAIL. MINIMUM HEIGHT 1070mm.
6. OPEN GRATE HOT DIPPED GALVANIZED METAL LANDING AND STAIRS. ASSEMBLY TO BE ANCHORED TO FOUNDATION WALL.

APPROVED

By Don Herweyer at 11:26 am, Apr 04, 2019

*Don Herweyer*

DON HERWEYER, MCIP, RPP  
MANAGER, DEVELOPMENT REVIEW - SOUTH  
PLANNING, INFRASTRUCTURE & ECONOMIC  
DEVELOPMENT DEPARTMENT, CITY OF OTTAWA

1. Contractor must verify all job dimensions, all drawings, details, specifications and report any discrepancies to owners before proceeding with work.
2. All drawings and specifications are instruments of service and the property of the architects which must be returned at the completion of the work, and may not be reproduced without their written permission.

ref	description	date
4	FOR SPC RESUBMISSION	2019 02 22
3	Issued for Revision to Permit and Tender	2018 12 20
2	Issued for coordination	2018 06 01
1	Issued for Permit	2018 04 27

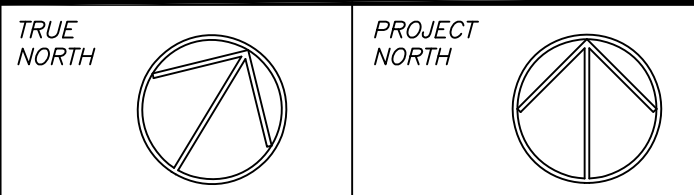
### revisions



ISSUED FOR  
SITE PLAN CONTROL  
2019-02-22

DESIGN ARCHITECT	TACT Architecture Inc. 660R College St (Rear Lane) Toronto ON M6G 1B8 tel: (416) 516 1949 email: info@tactdesign.ca
STRUCTURAL ENGINEER	Cleland Jardine Engineering Ltd. 200-580 Terry Fox Drive, Kanata ON K2C 4B9 tel: (613) 591-4553 fax: (613) 591-1703 e-mail: mail@clelandjardine.com
MECHANICAL/ELECTRICAL	Goodkey Weedmark Consulting Engineers 1688 Woodward Dr. Ottawa ON K2C 0P9 tel: (613) 727-5111 fax: (613) 727-5115 web: www.gwal.com e-mail: info@gwal.com
CIVIL ENGINEER	J. L. Richards & Associates Ltd. 864 Lady Ellen Place, Ottawa ON K1Z 5M2 tel: (613) 613-728-3571 www.jrichards.ca
PLANNING & URBAN DESIGN	Fotenn 223 McLeod Street, Ottawa ON K2P 0Z8 tel: (613) 730-5709 fax: (613) 730-1136 www.fotenn.com

owner:  
**Dymon Capital Corporation**  
2-1830 Walkley Road  
Ottawa ON K1H 8K3  
tel: 613-247-0888 fax: 613-247-7730



project & location  
**DYMON SELF-STORAGE**  
851 INDUSTRIAL AVENUE  
OTTAWA, ONT.

CITY FILE NUMBER

title of drawing  
**ACCESSIBILITY PARKING  
EXTERIOR STAIRS**

scale  
AS NOTED  
drawing  
A-101  
date  
JUL 2017  
drawn by  
CT / AA