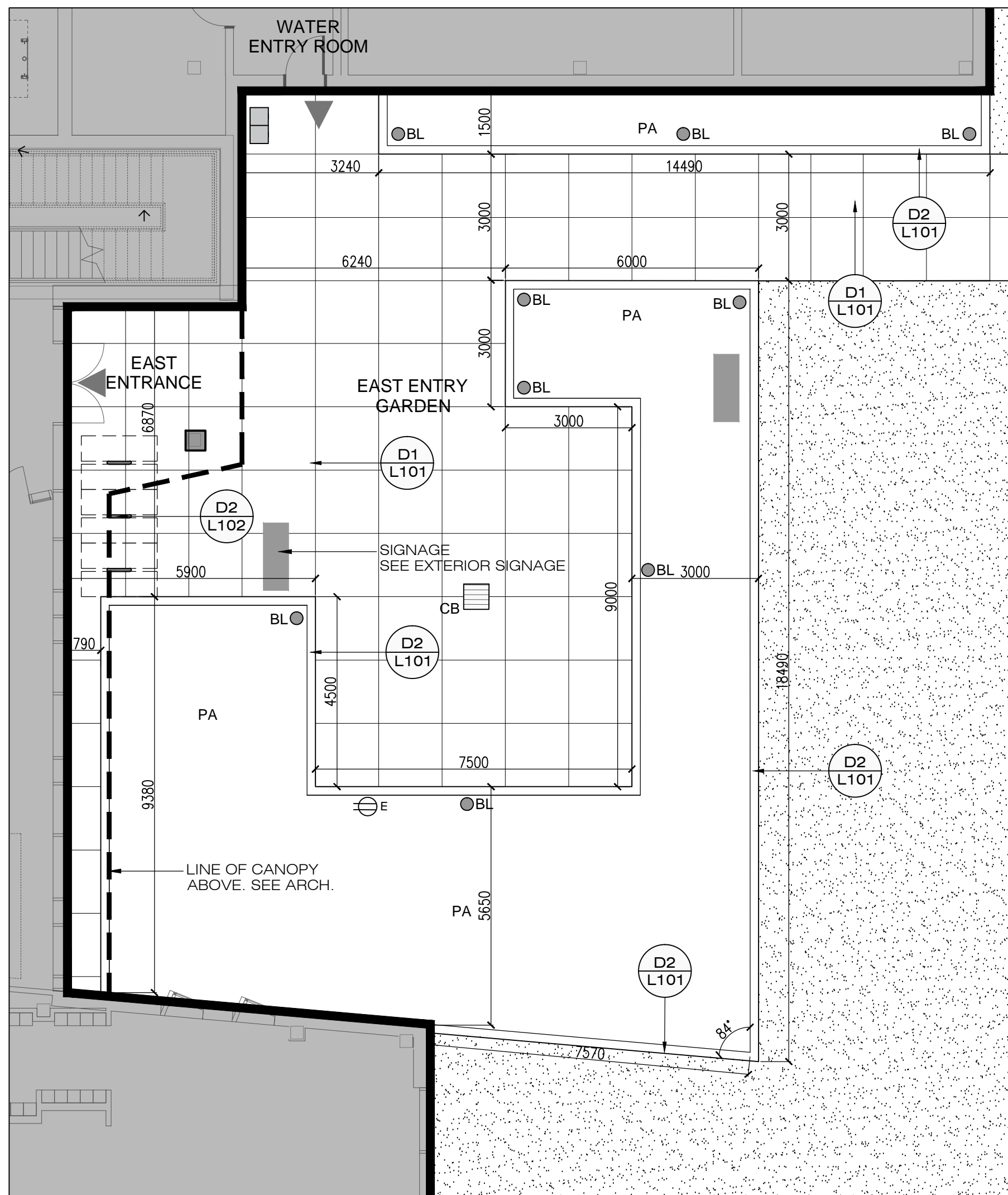
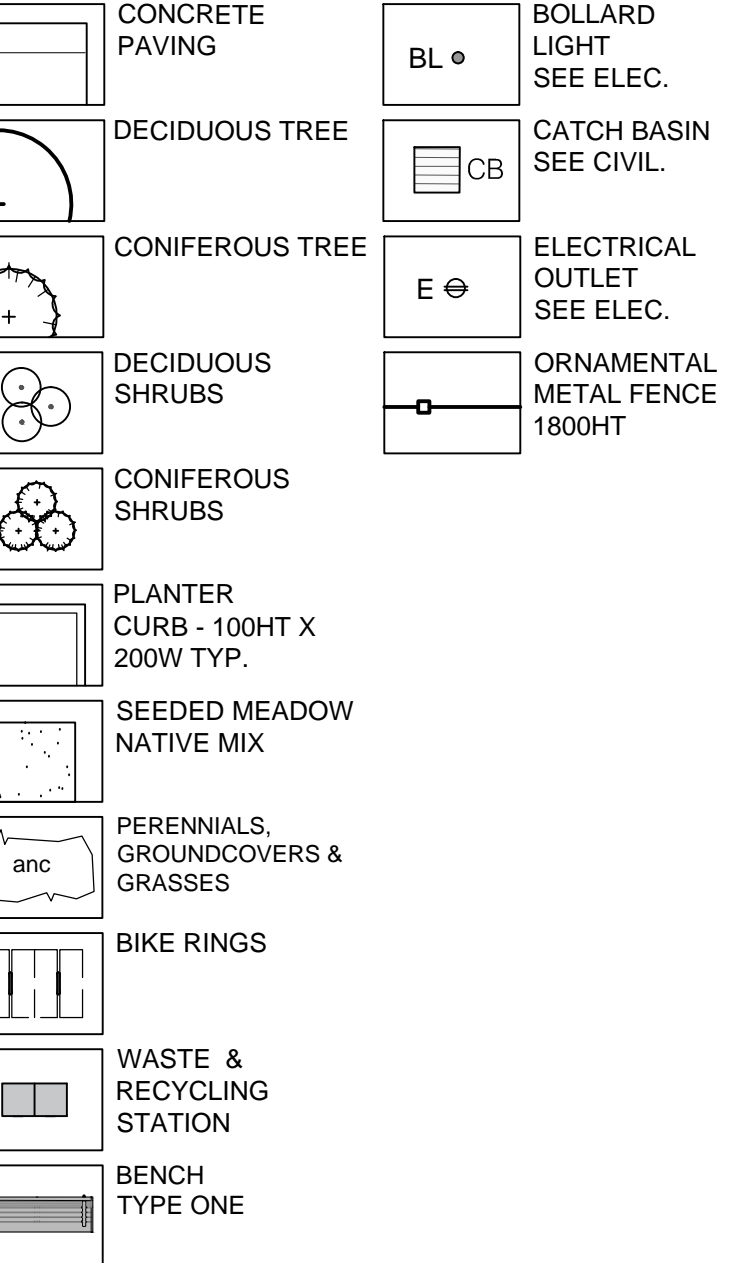
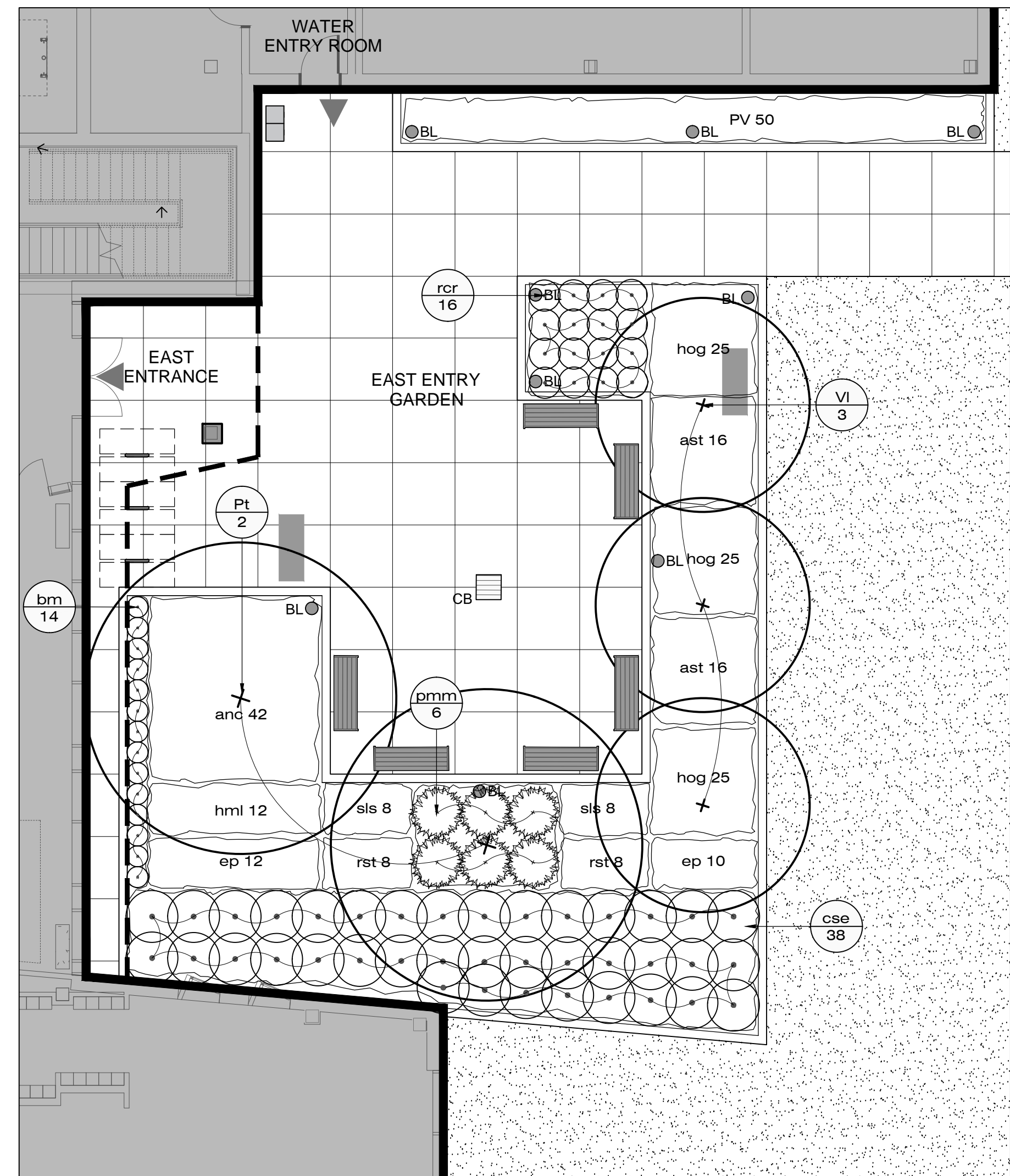


## LEGEND



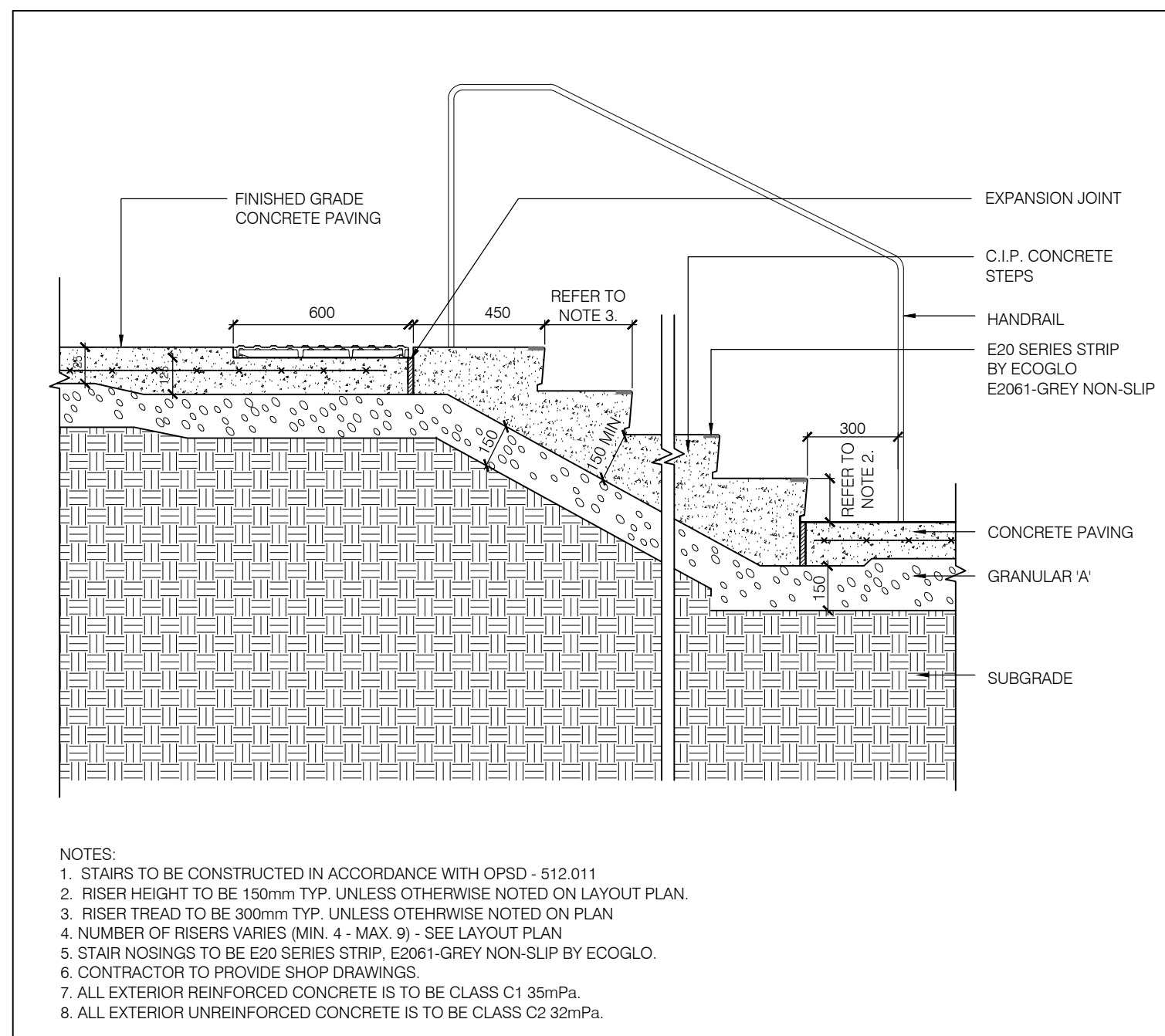
**EAST ENTRY GARDEN LAYOUT  
PLAN**

SCALE 1:100



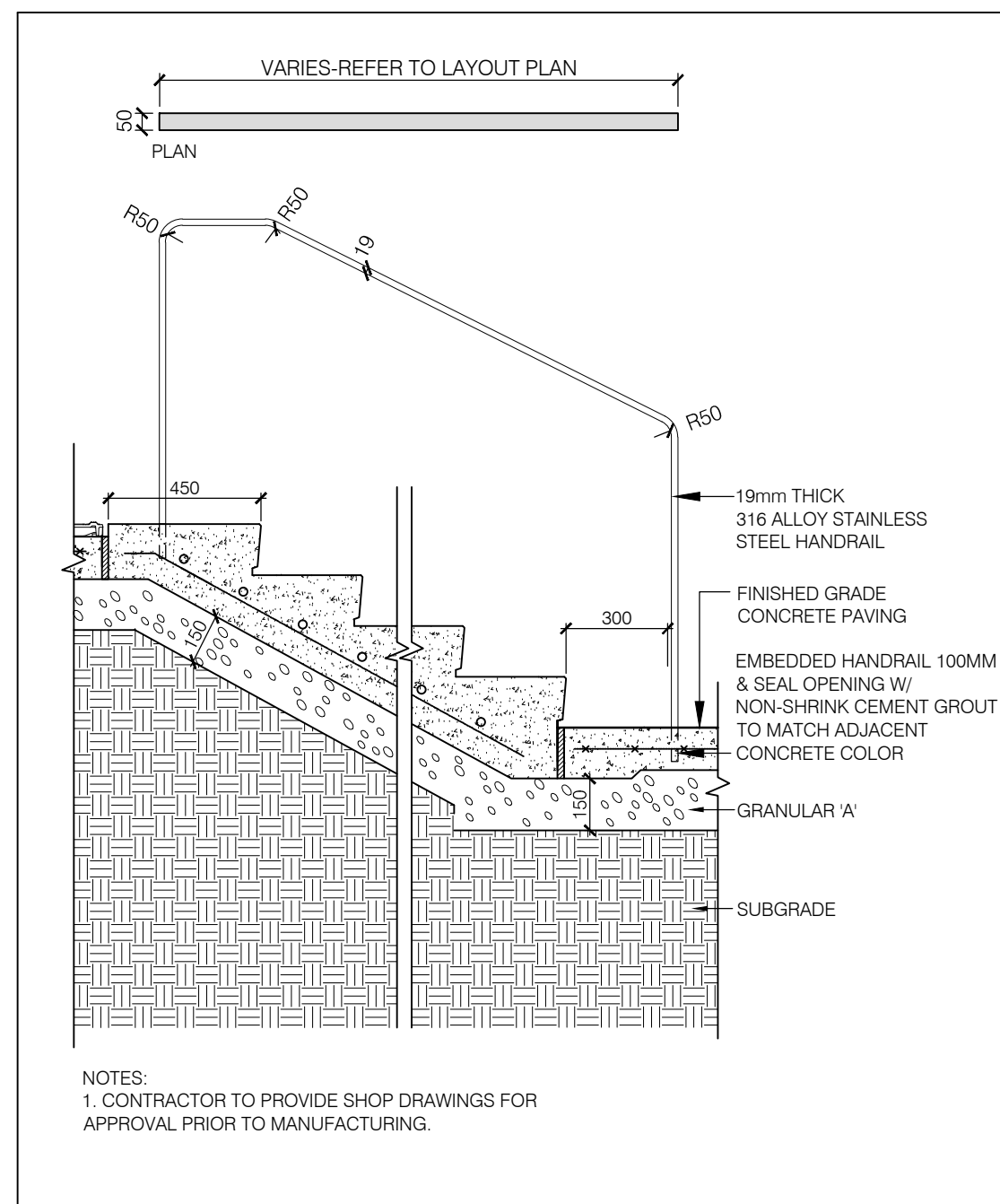
L3 EAST ENTRY GARDEN PLANTING  
L107 PLAN

SCALE 1:100



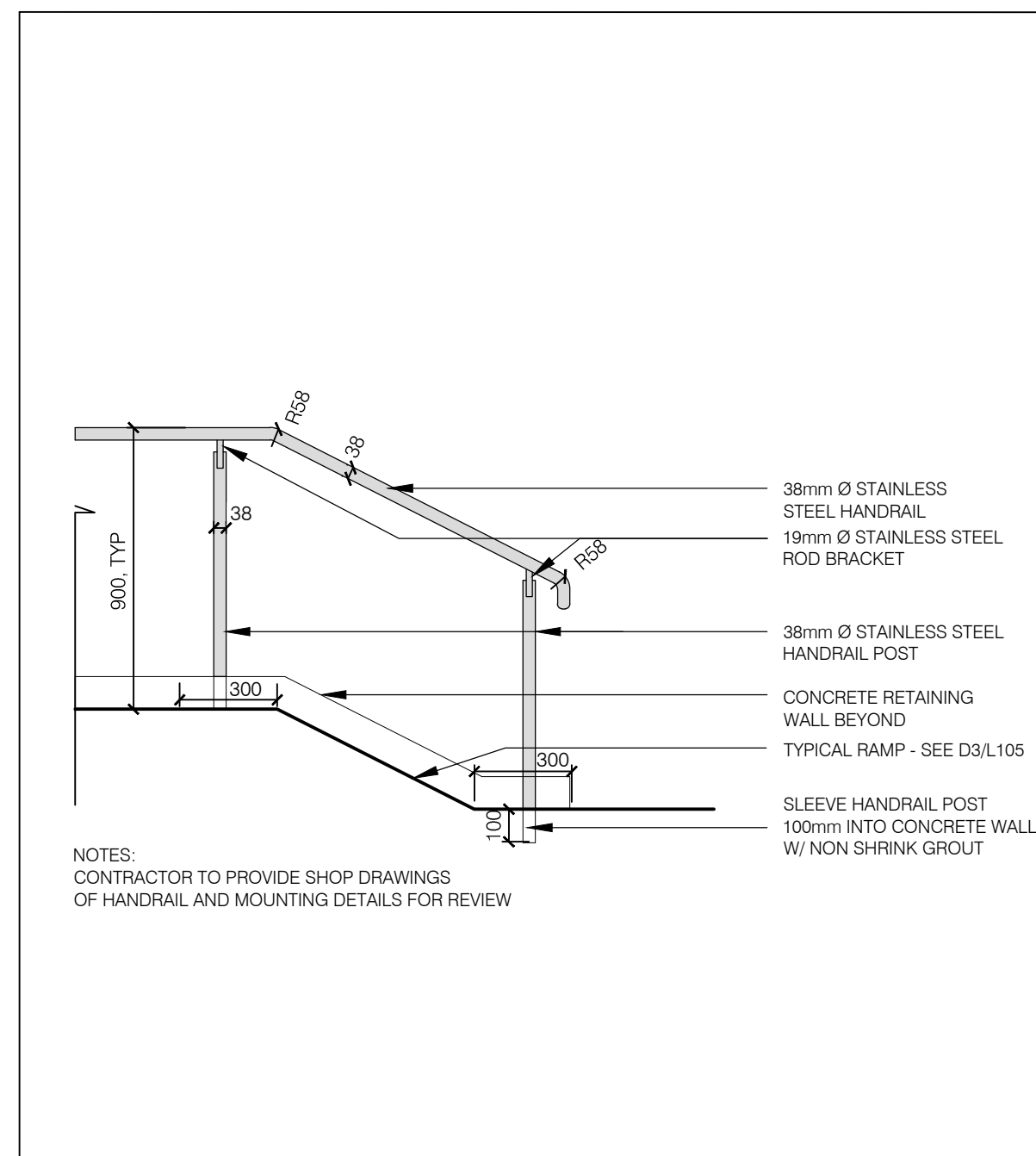
## D1 L107 TYPICAL CONCRETE STEPS AT THERAPEUTIC GARDEN SECTION

SCALE 1:20



D2
L107
 TYPICAL HANDRAIL AT THERAPEUTIC GARDEN  
 PLAN / SECTION

SCALE 1:20



D3  
L107

TYPICAL RAMP HANDRAIL DETAIL  
PLAN / SECTION

SCALE 1:20

EAST ENTRY GARDEN PLANT LIST								
Key	Qty.	Botanical Name	Comm on Name	Cal.	Sprd.	Hgt.	Root	Native/ Drought Tolerant
TREES								
Pt	2	Populus tremuloides	Trembling Aspen	75			B&B	native, drought tolerant
Vi	3	Viburnum lentago	Nannyberry			2500	B&B	native, drought tolerant
Key	Qty.	Botanical Name	Comm on Name	Cal.	Sprd.	Hgt.	Root	Remarks
SHRUBS								
bm	14	Buxus microphylla 'Koreans'	Korean Boxw ood			800	3 gallon pot	drought tolerant native
cse	38	Cornus sericea	Red Osier Dogsw ood			800	3 gallon pot	
prmm	6	Pinus mugo 'Mugo'	Mugho Pine			600	3 gallon pot	
Key	Qty.	Botanical Name	Comm on Name	Cal.	Sprd.	Hgt.	Root	
PERENNIALS								
anc	42	Anemone canadensis	Native Anemone	W			1 gallon pot	native, drought tolerant
ast	32	Aster divaricatus	White Wood Aster				1 gallon pot	native
ep	22	Echinacea purpurea	Purple Coneflow ers	Pr			1 gallon pot	
hmf	12	Hemerocallis 'Lime Fritils'	Lime Fritils Daylily	L-Y			1 gallon pot	drought tolerant
hog	75	Hosta 'Guacamole'	Guacamole	W			1 gallon pot	
rst	16	Rubicekia triloba	Three-lobed Coneflow er				1 gallon pot	native
sls	16	Salvia superba	Violet Sage	V			1 gallon pot	
Key	Qty.	Botanical Name	Comm on Name	Cal.	Sprd.	Hgt.	Root	Native/ Drought Tolerant
ROSES								
rcr	16	Rosa 'Carolina'	Caroline Rose	Ph			2 gallon pot	
GRASSES								
PV	50	Panicum Virgatum 'Rubrum'	Red Sw itch Grass					

MARK	DATE	DESCRIPTION
1.	17-06-16	ISSUED FOR REVIEW
2.	17-09-21	ISSUED FOR REVIEW
3.	17-11-10	MOHLTc STAGE 3.2 SKETCH PLAN
4.	18-02-16	ISSUED FOR 50% PEER REVIEW
5.	18-02-23	ISSUED FOR PEER REVIEW
6.	18-04-24	ISSUED FOR PRE-BID ESTIMATE
7.	18-05-04	ISSUED FOR COORDINATION
8.	18-07-20	ISSUED FOR STAGE 4a SUBMISSION
9.	18-09-25	ISSUED FOR 100% REVIEW
10.	18-10-09	ISSUED FOR RFP
11.	18-10-26	ISSUED FOR BUILDING PERMIT
12.	18-11-02	REVISED SPA
13.	19-03-27	ISSUED FOR REVISED SPA

Project Number	1707
Original Issue	
Scale: 1:100	



Sheet Name

## EAST ENTRY GARDEN LAYOUT & PLANTING PLANS & DETAILS

Sheet Number

L107

### Project Status