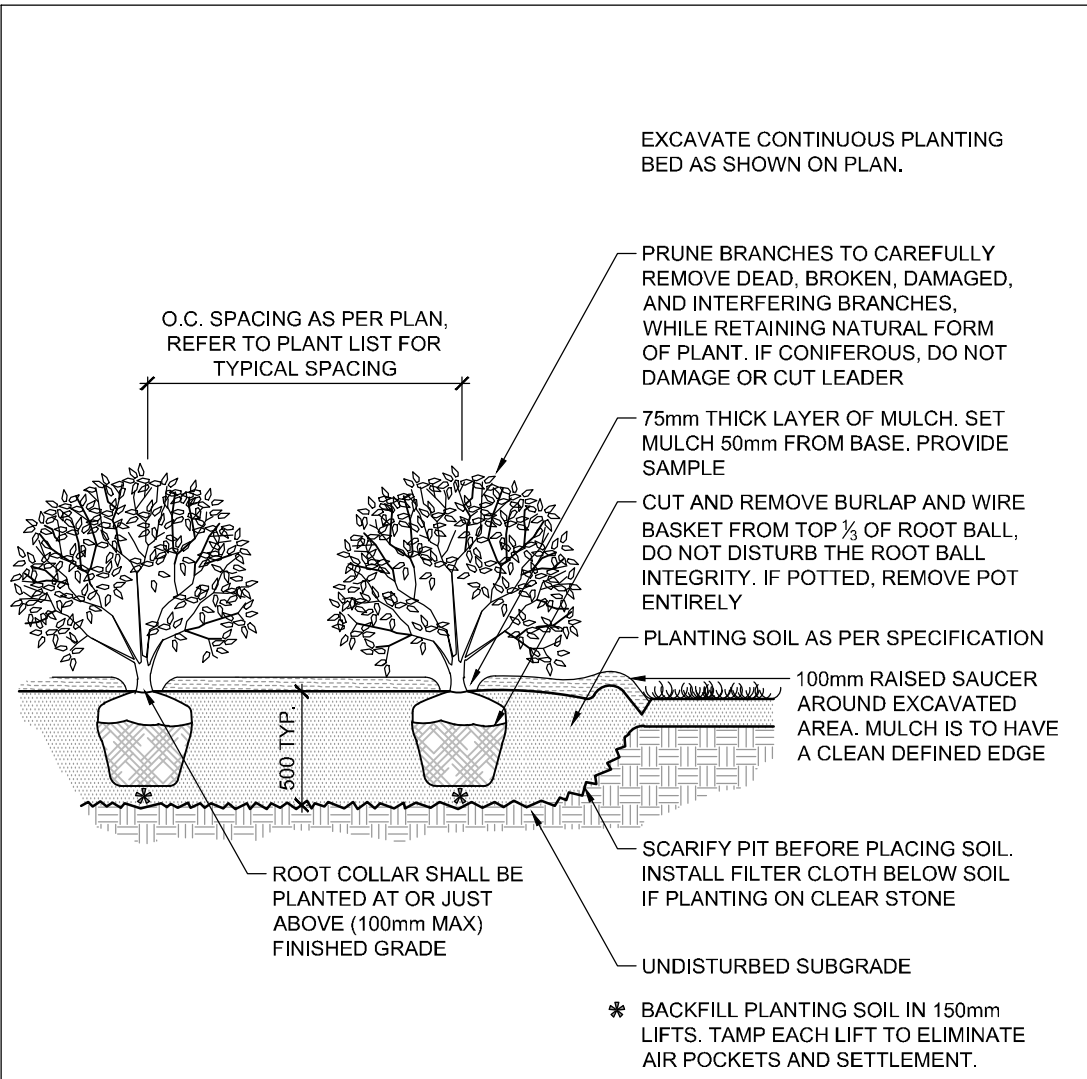
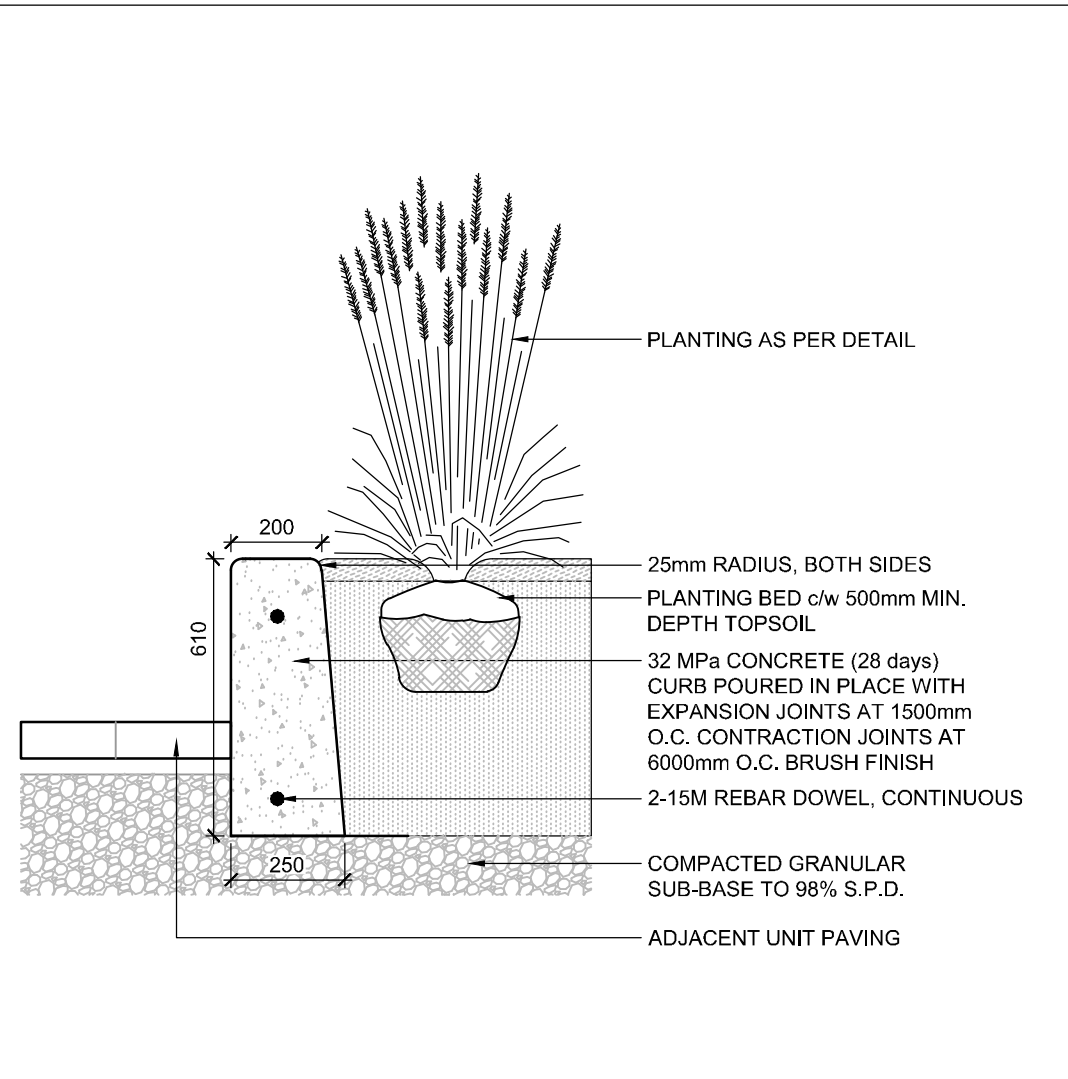


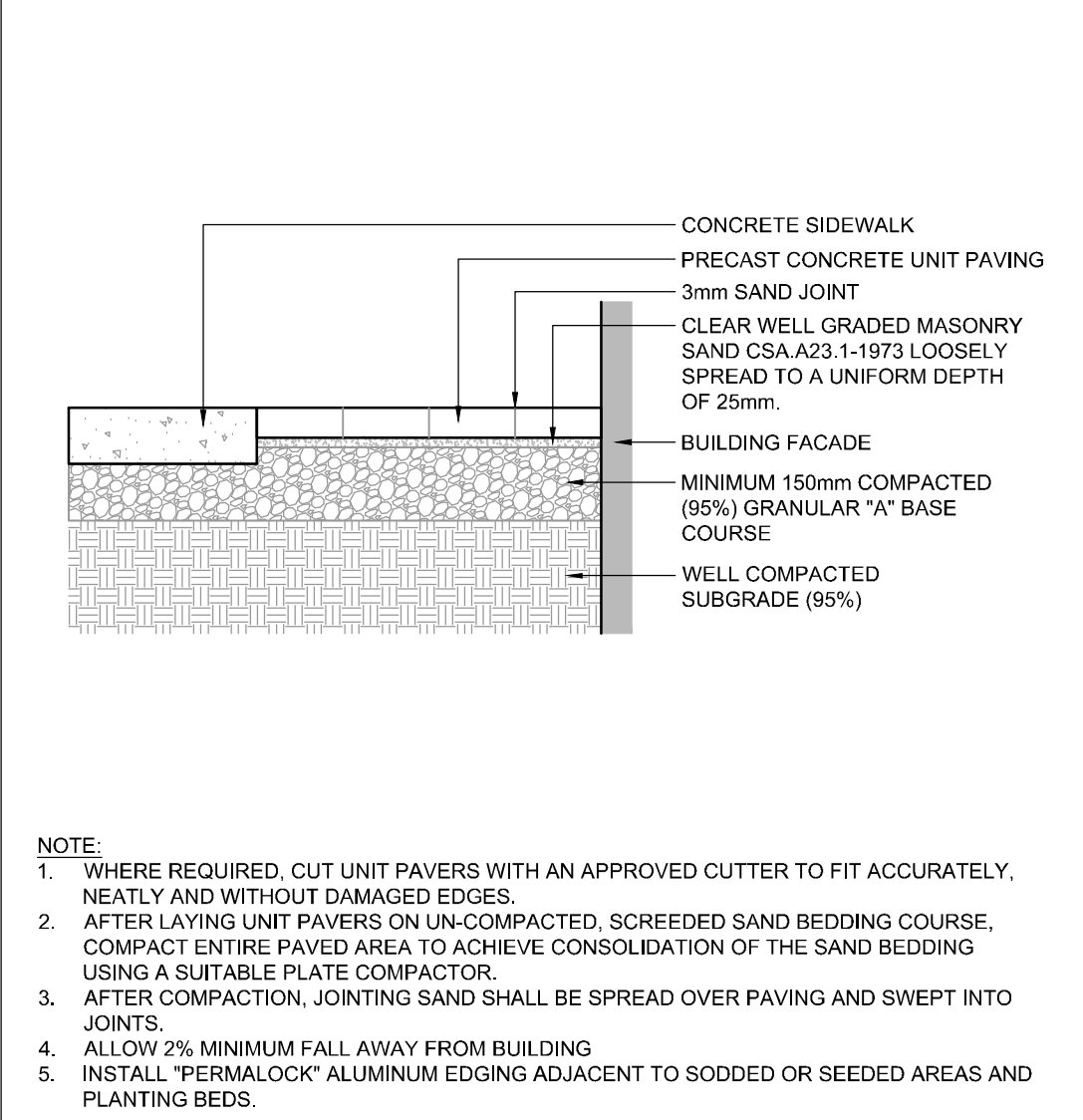
M:\2018\18087\CAD\Landscape\L-Plan\18087-L.dwg, L-1, Mar 01, 2019 - 4:08pm, introduction



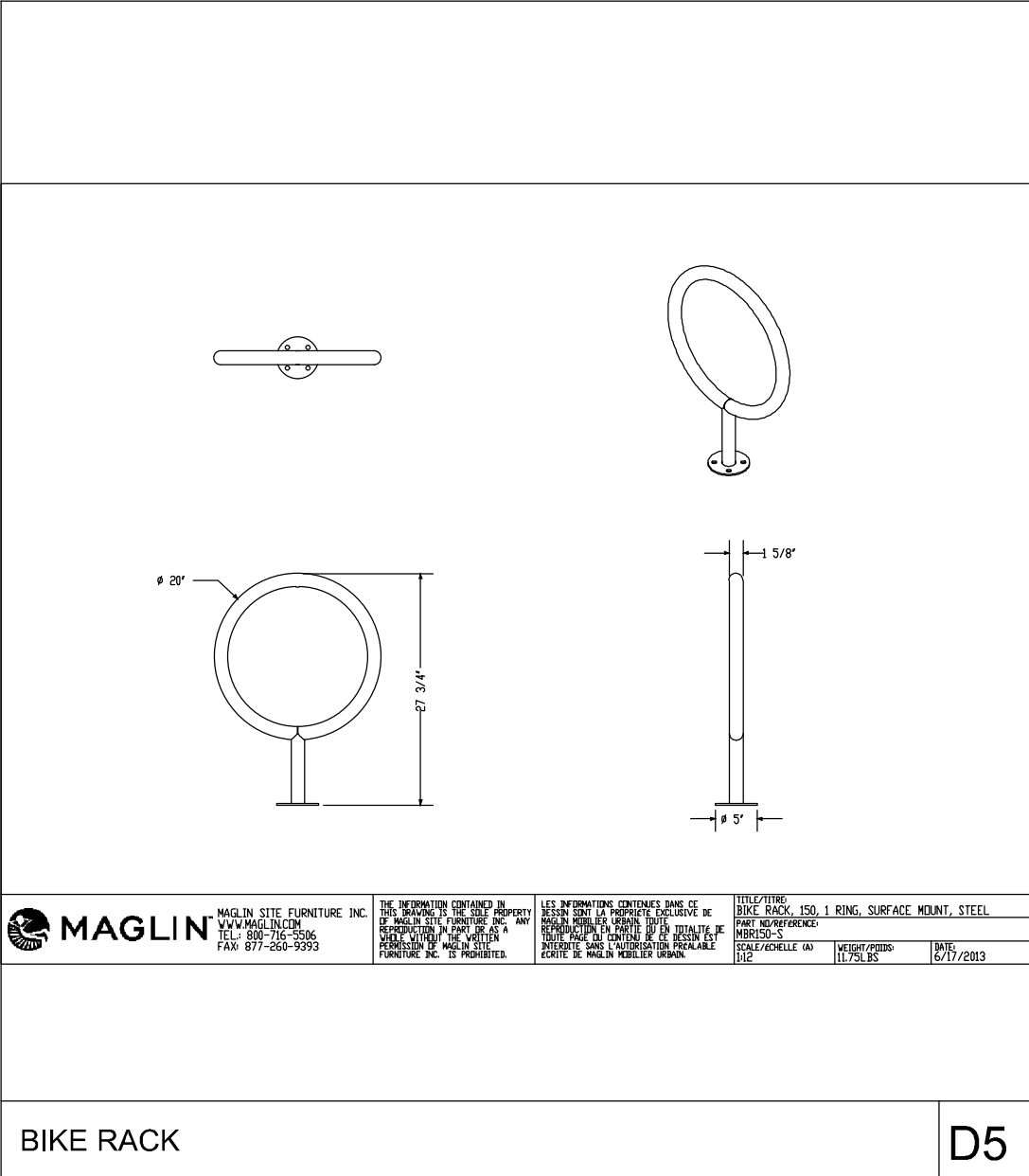
SHRUB AND PERENNIAL PLANTING D1



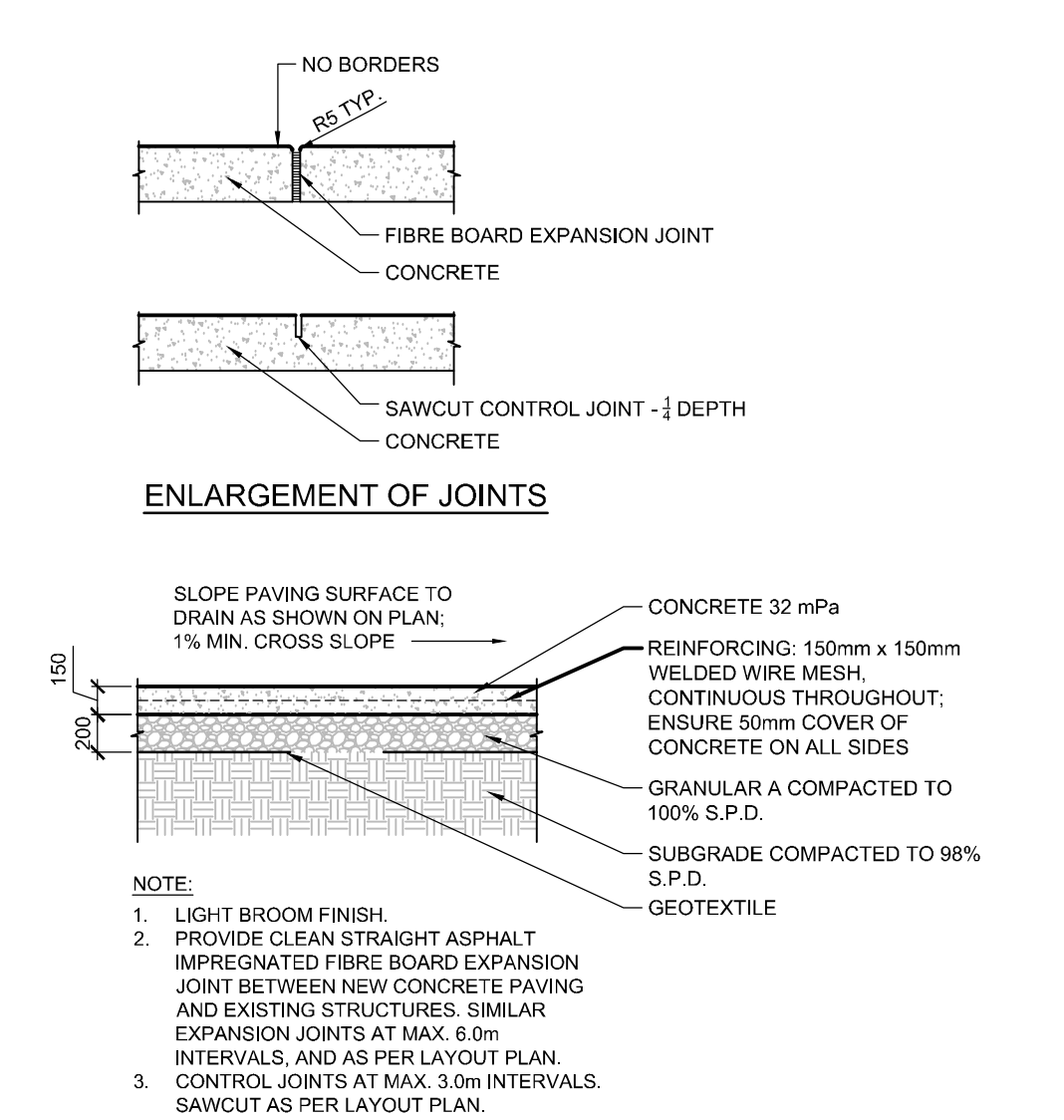
300mm HIGH CONCRETE PLANTER CURB D2



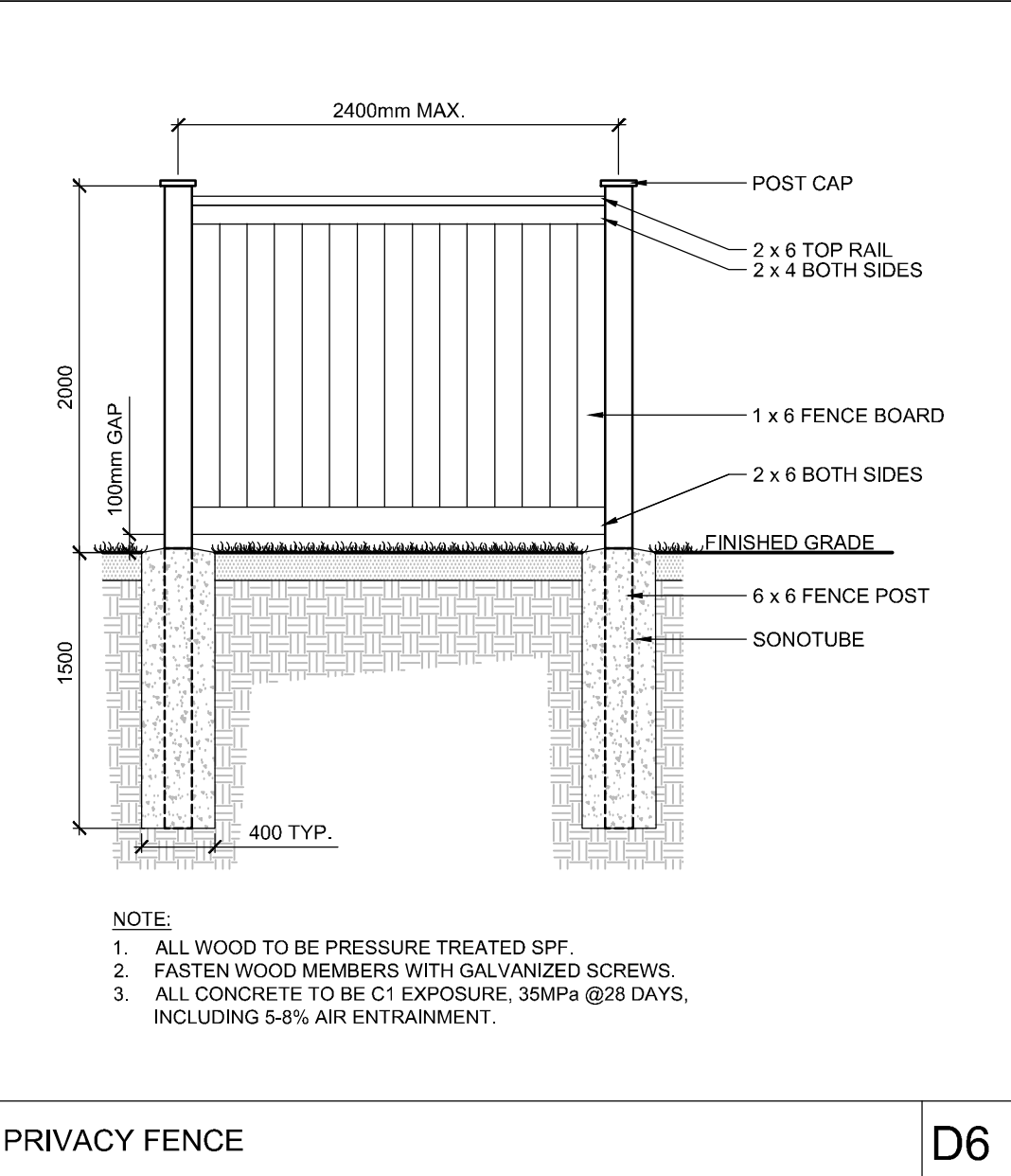
PAVERS BESIDE SIDEWALK AND BUILDING D3



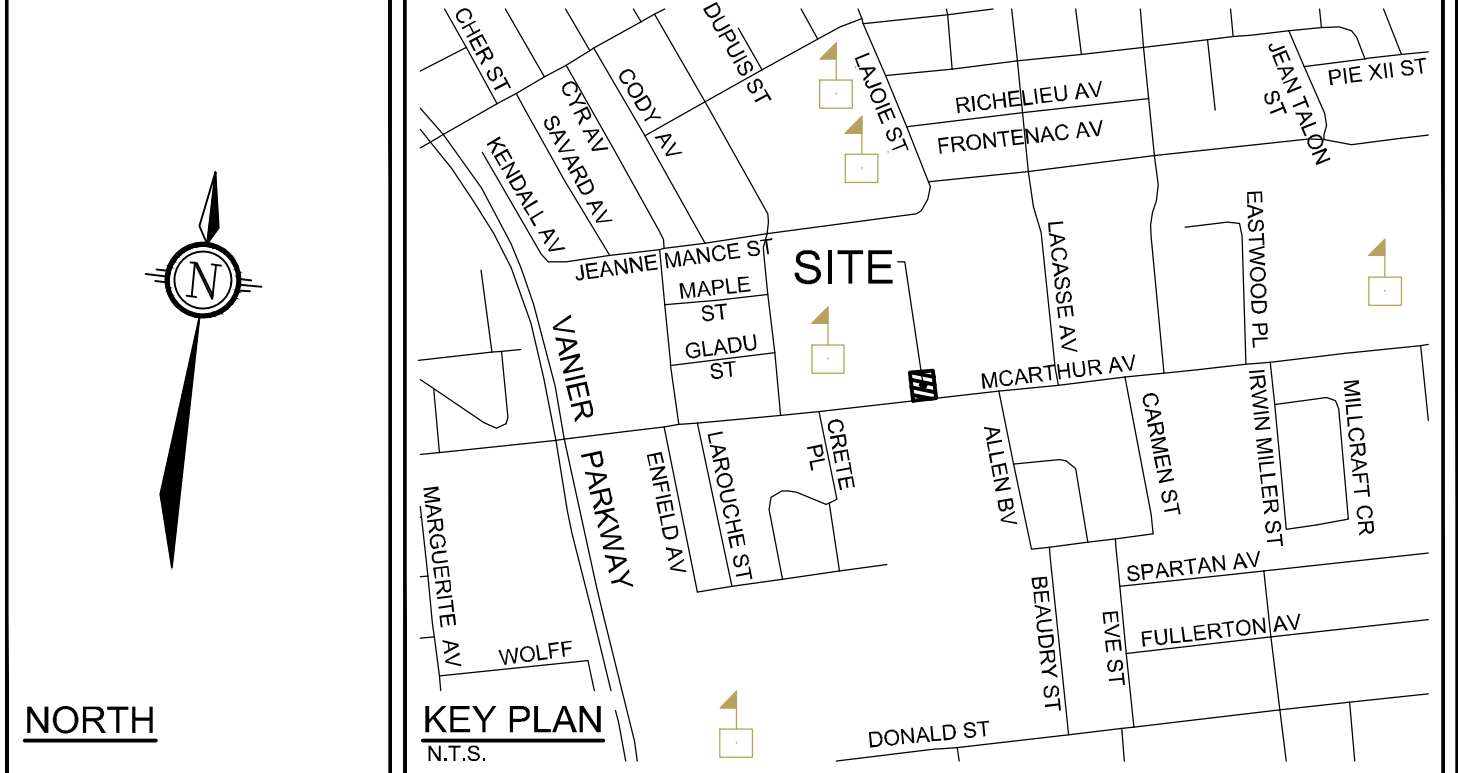
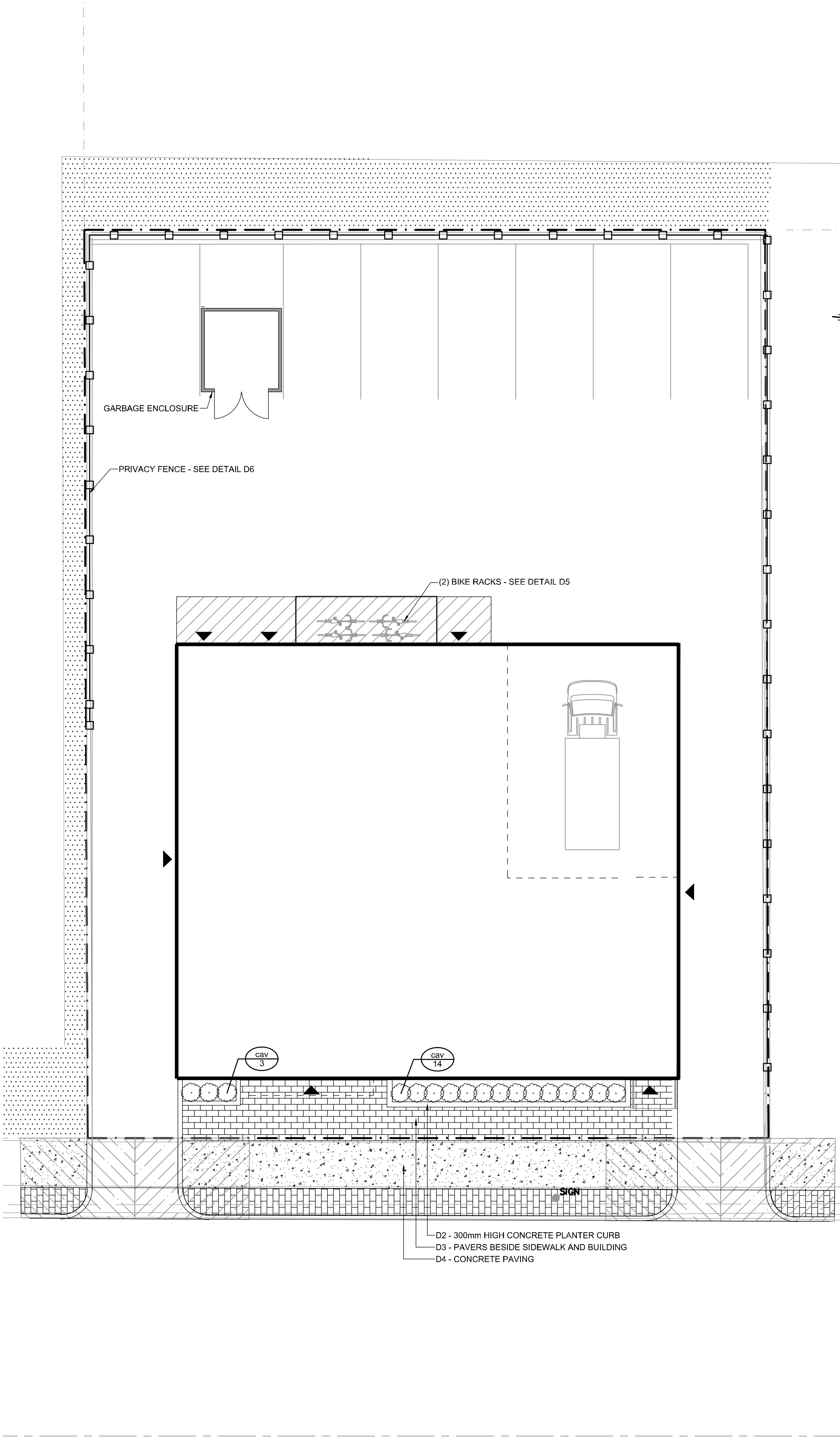
BIKE RACK D5



CONCRETE PAVING D4



PRIVACY FENCE D6



LANDSCAPE LEGEND:

- PROPOSED ORNAMENTAL GRASSES
- PROPOSED PRIVACY FENCE
- SPECIES (SEE PLANT LIST)
- QUANTITY
- CONCRETE UNIT PAVERS
- CONCRETE SIDEWALK
- HYDROSEED AND MULCH OFF-SITE RESTORATION

PLANT LIST

KEY	QTY	BOTANICAL NAME	COMMON NAME	SIZE	COND	SPACING
Ornamental Grasses						
cav	17	<i>Calamagrostis acutiflora</i> 'Avalanche'	Avalanche Feather Reed Grass	1g	PT	60cm O.C.

PLANTING NOTES

- This drawing shall be read in conjunction with all relevant **Architectural**, Engineering, and related drawings and documents.
- Refer to Engineering Drawings for Grading. Provide drainage as indicated in grading plan. Round all tops and toes of slopes, smoothly. Compact all areas to 95% Standard Proctor Density unless otherwise noted.
- Refer to **Architectural Drawings** for site layout.
- Refer to Engineering Drawings for site servicing.
- Contractor must contact utility companies for locates prior to excavation or planting.
- It is essential to use the plans and details in conjunction with the specifications and notes.
- Existing trees to be retained shall be protected according to the contract detail and specifications.
- Plant material shall be No. 1 Grade and shall comply with Canadian Standards for Nursery Stock (latest edition) published by the Canadian Nursery Landscape Association.
- Use plant material with strong fibrous root system free of disease, defects or injuries, and structurally sound. Use trees with straight trunks, well and characteristically branched for species. Obtain approval from consultant of plant material at source prior to digging. All trees and shrubs shall be container grown, potted, W/B or B/B, as indicated on Plant List. Bare root planting will only be acceptable for certain species and as approved by the Landscape Architect.
- Plant material substitutions shall not be permitted without the written approval from the consultant, **with 48 hours notice**, prior to shipping plant material.
- Plant locations are schematic / approximate only. **Contractor shall stake out locations on site for approval by the Landscape Architect prior to installation.** The illustrated number of plants shown in the Planting Plan supersedes the estimated number in the Plant List. Contractor to report any discrepancies to the Landscape Architect prior to installation. Contractor will assume full responsibility if the Landscape Architect is not notified.
- Shrubs, Perennials, Vines, and Groundcovers shall be planted in a continuous planting bed of **500mm** depth with approved topsoil covered with **75mm** depth shredded bark mulch.
- Ensure trees are thoroughly watered following planting. Monitor material and ensure adequate moisture until acceptance.
- In heavy clay or poorly drained soils, set root ball with root collar 75-100mm higher than finished grade.
- Planting in raised planters shall be set on a bed of heavily compacted growing medium, at the bottom, to eliminate settlement. Backfill around the root ball with growing medium in 150mm lifts. Tamp and water each lift to eliminate air pockets or settlement. Growing medium to be 80% commercial screened topsoil, 10% peat moss or compost, and 10% perlite. Top of the planter shall be covered with 75mm of shredded bark mulch.
- Sod and/or seed areas to receive 100mm depth topsoil as specified. Sod shall be No. 1 Kentucky Bluegrass Sod grown from minimum mixture of 3 Kentucky Bluegrass cultivars. Quality and source shall comply with Canadian Standards for Nursery Stock, Section 17, (latest edition) published by the Canadian Nursery Landscape Nursery Landscape Association. Unless otherwise specified, turf is to be maintained by the contractor until a second cutting is accepted by the Landscape Architect.
- Apply the following mineral fertilizer unless soil tests show other requirements: Sodded areas - (8-32-16) 8% Nitrogen, 32% Phosphorus, 16% Potash at a rate of 350kg/ha. - Planting Beds - (8-32-16) - 8% Nitrogen, 32% Phosphorus, 16% Potash as per manufacturer specifications.
- Reinstate all areas damaged or disturbed beyond the Limit of Work.
- Refer to specifications:
 - NOVA 8020 Imported Topsoil
 - NOVA 8030 Sod
 - NOVA 8040 Seed and Cover (Hydraulic Seeding)
 - NOVA 8060 Trees, Shrubs and Groundcover Planting
 - NOVA 8061 Maintenance of Planting

NOTE: THE POSITION OF ALL POLE LINES, CONDUITS, WATERMANS, SEWERS AND OTHER UNDERGROUND AND OVERGROUND UTILITIES AND STRUCTURES IS NOT NECESSARILY SHOWN ON THE CONTRACT DRAWINGS, AND WHERE SHOWN, THE ACCURACY OF THE POSITION OF SUCH UTILITIES AND STRUCTURES IS NOT GUARANTEED, BEFORE STARTING WORK, DETERMINE THE EXACT LOCATION OF ALL SUCH UTILITIES AND STRUCTURES AND ASSUME ALL LIABILITY FOR DAMAGE TO THEM.

NOT FOR CONSTRUCTION

No.	REVISION	DATE	BY
1.	ISSUED FOR SITE PLAN CONTROL	MAR 1/19	RJ

SCALE
1:100
1:100
0 1 2 3 4

DESIGN
SC
CHECKED
SC
DRAWN
MT
CHECKED
SC
APPROVED
RJ

FOR REVIEW ONLY



NOVATECH
Engineers, Planners & Landscape Architects
Suite 200, 240 Michael Cowpland Drive
Ottawa, Ontario, Canada K2M 1P6
Telephone (613) 254-9643
Facsimile (613) 254-5867
Website www.novatech-eng.com

LOCATION CITY OF OTTAWA 257 McArthur Avenue	PROJECT NO. 118087-00
DRAWING NAME LANDSCAPE PLAN	REV REV # 1
	DRAWING NO. 118087-L