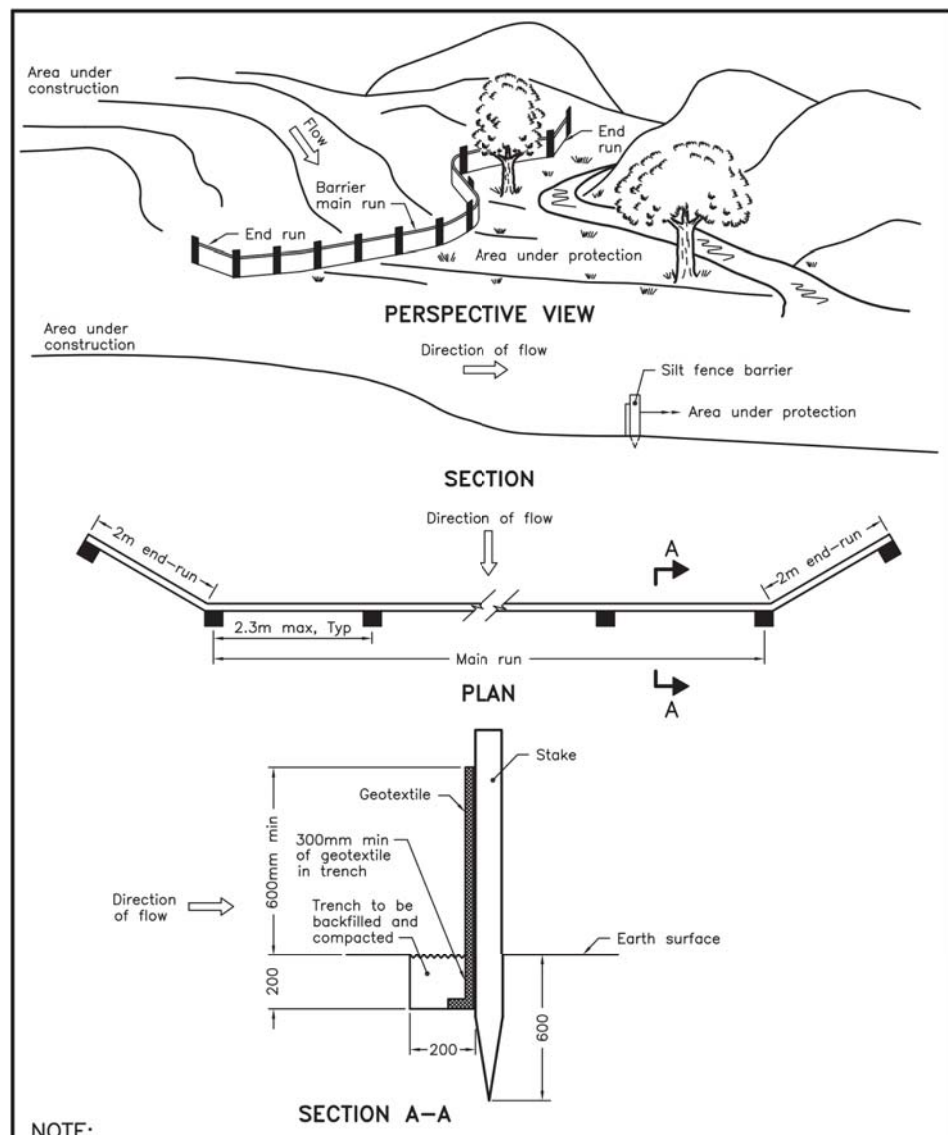


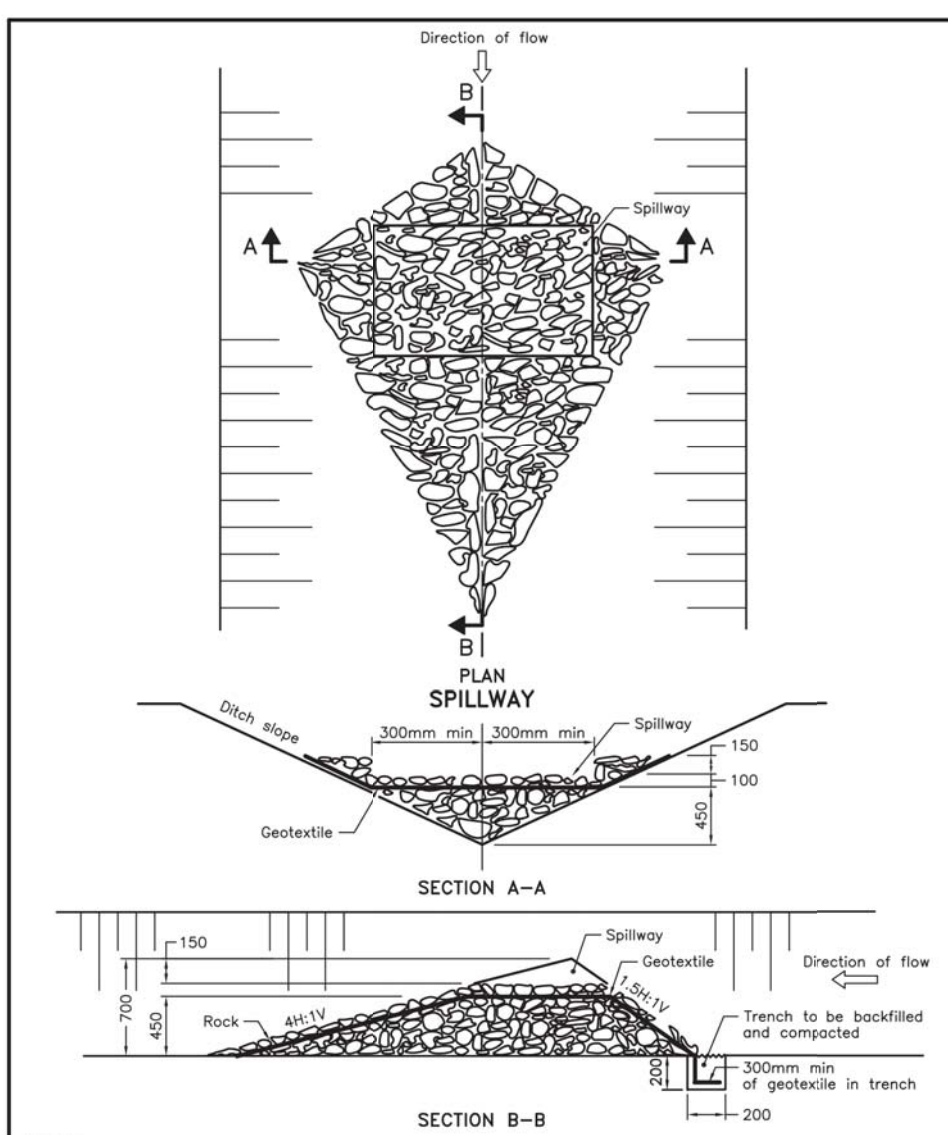
NOTES:
 1. Number of bales varies to suit ditch.
 2. Straw bales to be butted tightly against adjoining bales and shaped to conform to the sides of the ditch to prevent water flow through barrier.
 A. All dimensions are in millimetres unless otherwise shown.

ONTARIO PROVINCIAL STANDARD DRAWING Nov 2006 Rev 1
STRAW BALE FLOW CHECK DAM
 OPSD 219.180



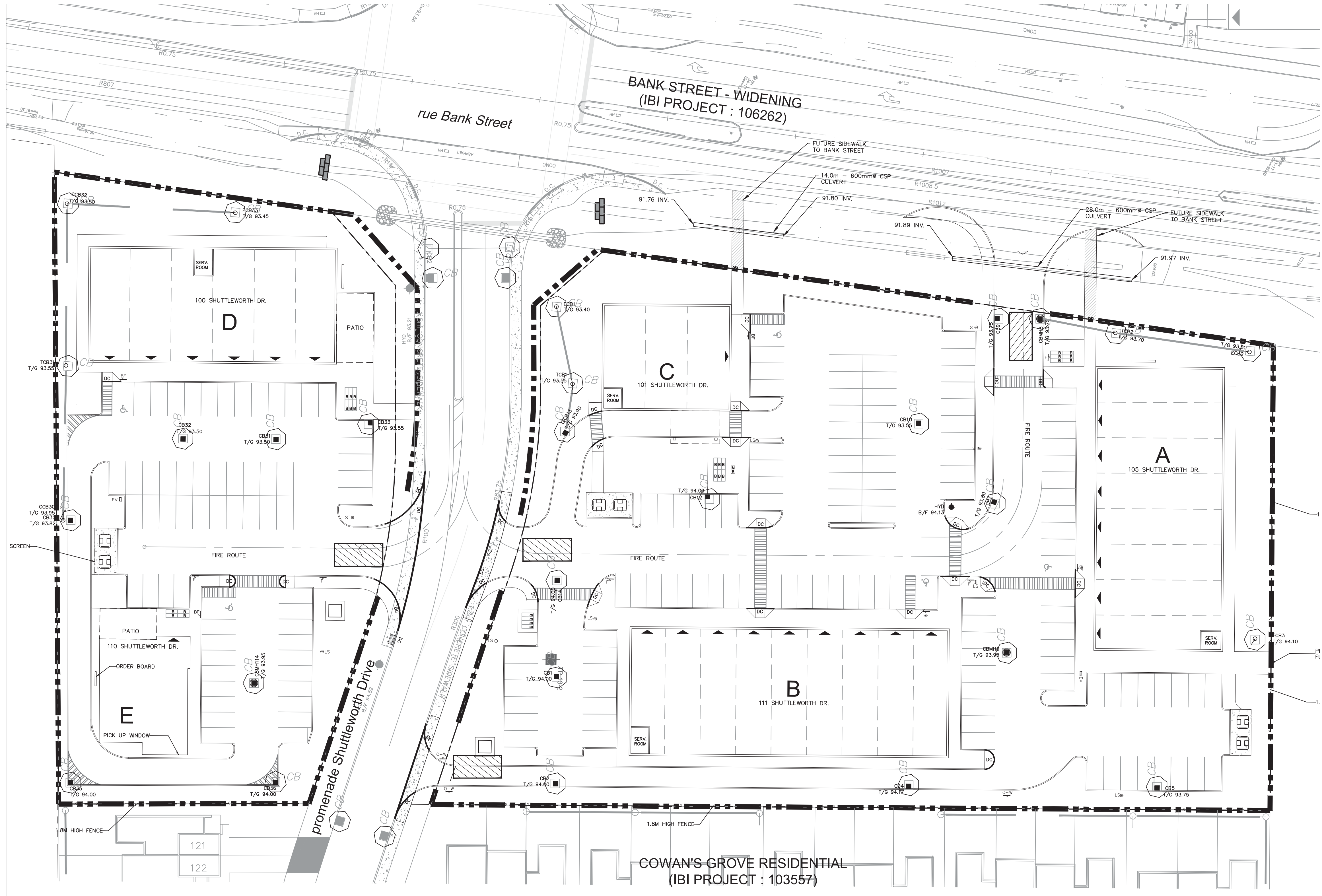
NOTE:
 A. All dimensions are in millimetres unless otherwise shown.

ONTARIO PROVINCIAL STANDARD DRAWING Nov 2006 Rev 1
LIGHT-DUTY SILTY FENCE BARRIER
 OPSD 219.110



NOTE:
 A. All dimensions are in millimetres unless otherwise shown.

ONTARIO PROVINCIAL STANDARD DRAWING Nov 2006 Rev 1
ROCK FLOW CHECK DAM V-DITCH
 OPSD 219.210



COWAN'S GROVE RESIDENTIAL
 (IBI PROJECT : 103557)

- NOTES:
- SILT FENCE TO BE ERRECTED PRIOR TO EARTH WORKS BEING COMMENCED. SILT FENCE TO BE MAINTAINED UNTIL VEGETATION IS ESTABLISHED OR UNTIL START OF SUBSEQUENT PHASE.
 - STRAW BALE SEDIMENT TRAPS TO BE CONSTRUCTED IN EXISTING ROAD SIDE DITCHES. TRAPS TO REMAIN AND BE MAINTAINED UNTIL VEGETATION IS ESTABLISHED.
 - SILT SACK TO BE PLACED AND MAINTAINED UNDER COVER OF ALL CATCHBASINS. GEOTEXTILE SILT SACK IN STREET C&B TO REMAIN UNTIL ALL CURBS ARE CONSTRUCTED. GEOTEXTILE FABRIC IN RYCBs TO REMAIN UNTIL VEGETATION IS ESTABLISHED. ALL CATCHBASINS TO BE REGULARLY INSPECTED AND CLEANED, AS NECESSARY, UNTIL SOD AND CURBS ARE CONSTRUCTED.
 - WORKS NOTED ABOVE ARE TO BE INSTALLED, INSPECTED, MAINTAINED AND ULTIMATELY REMOVED BY SERVICING CONTRACTOR.
 - THIS IS A "LIVING DOCUMENT" AND MAY BE MODIFIED IN THE EVENT THE PROPOSED CONTROL MEASURES ARE INSUFFICIENT.

APPROVED
 By Don Herweyer at 12:13 pm, Mar 15, 2019

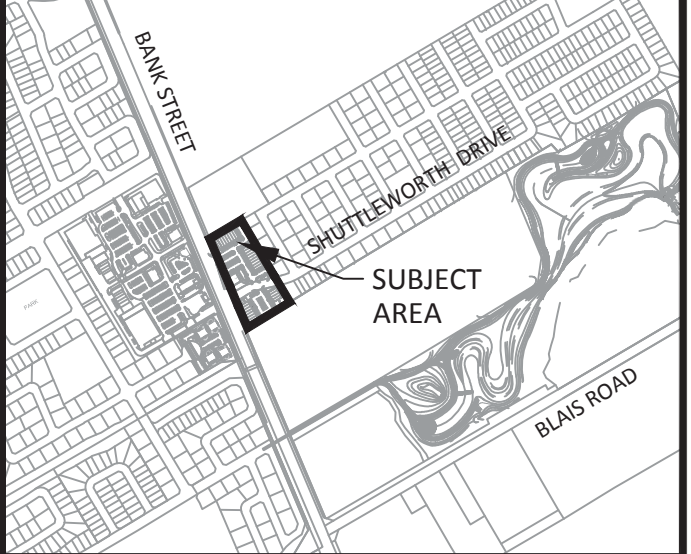
Don Herweyer

DON HERWEYER, MCIP, RPP
 MANAGER, DEVELOPMENT REVIEW - SOUTH PLANNING, INFRASTRUCTURE & ECONOMIC DEVELOPMENT DEPARTMENT, CITY OF OTTAWA

APPROVED REFUSED

THIS DAY OF _____, 20__

DON HERWEYER, MCIP, RPP
 MANAGER, DEVELOPMENT REVIEW - SOUTH PLANNING, INFRASTRUCTURE & ECONOMIC DEVELOPMENT DEPARTMENT, CITY OF OTTAWA



KEY PLAN
 (NTS)

NOTES:
 1. SEE DRAWING C-010 FOR ADDITIONAL DETAILS AND NOTES.
 2. SITE BENCHMARK TO BE OBTAINED FROM LEGAL SURVEYOR ANNIS, O'SULLIVAN, VOLLEBECK LTD.

- LEGEND :**
- LIGHT DUTY SILT FENCE AS PER OPSD-219.110
 - SNOW FENCE
 - STRAW BALE CHECK DAM AS PER OPSD-219.180
 - ROCK CHECK DAM AS PER OPSD-219.210
 - SILT SACK PLACED UNDER EXISTING CB COVER
 - TEMPORARY MUD MAT 0.15m THICK 50mm CLEAR STONE ON NON WOVEN FILTER CLOTH

No.	REVISIONS	By	Date
14			
13			
12			
11			
10			
9			
8			
7			
6			
5	REVISED AS PER NEW SITE PLAN AND CITY COMMENTS	T.R.B.	2019-01-22
4	ISSUED FOR TENDER	T.R.B.	2019-01-17
3	RE-SUBMISSION FOR SITE PLAN APPROVAL	T.R.B.	2019-01-10
2	REVISED AS PER NEW SITE PLAN AND CITY COMMENTS	T.R.B.	2018-11-14
1	ISSUED FOR SPA	T.R.B.	2018-07-12

URBANDALE CORPORATION

IBI GROUP
 400 - 333 Preston Street
 Ottawa ON K1S 5N4 Canada
 tel 613 225 1311 fax 613 225 9868
 ibigroup.com

Project Title
Cowan's Grove PLAZA
 4791 BANK STREET

PROFESSIONAL ENGINEER
 T. R. BRULE
 2019/01/22
 PROVINCE OF ONTARIO

EROSION AND SEDIMENTATION CONTROL PLAN

Scale: N.T.S.

Design	J.B.	Date	JUNE 2018
Drawn	D.P.S.	Checked	T.R.B.
Project No.	116871	Drawing No.	900

D07-12-18-0109