

**PLANT LIST**

SYMBOL	TREES	BOTANICAL NAME	COMMON NAME	COUNT	SIZE
AR	Acer rubrum	Acer rubrum	Native Red Maple	5	60mm Cal.
Ca	Cornus alternifolia	Cornus alternifolia	Pagoda Dogwood	3	50mm Cal.
Cc	Celtis occidentalis	Celtis occidentalis	Hackberry	5	50mm Cal.
BC	Prunus serotina	Prunus serotina	Black Cherry	13	50mm Cal.
Gb	Ginkgo biloba 'Autumn Gold'	Ginkgo biloba 'Autumn Gold'	Autumn Gold Maidenhair Tree (Male)	3	50mm Cal.
WH	Hamamelis virginiana	Hamamelis virginiana	Witch Hazel	6	50mm Cal.
KC	Gymnocladus dioica	Gymnocladus dioica	Kentucky Coffeetree	3	50mm Cal.
Pg	Picea glauca	Picea glauca	White Spruce	11	200cm Ht.
Pb	Pinus banksiana	Pinus banksiana	Jack Pine	1	200cm Ht.
Pw	Pinus strobus	Pinus strobus	Eastern White Pine	8	200cm Ht.
PO	Quercus alba	Quercus alba	White Oak	3	70mm Cal.

SHRUBS	BOTANICAL NAME	COMMON NAME	COUNT	SIZE
C	Aronia melanocarpa	Chokeberry	25	2gal.
Am	Amelanchier canadensis	Serviceberry	4	2gal.
Jbs	Juniperus squamata 'Blue Star'	Blue Star Juniper	12	2gal.
Jh	Juniperus horizontalis	Creeping Juniper	29	2gal.
NJT	Ceanothus americanus	New Jersey Tea	18	2gal.
Bh	Diervilla lonicera	Bush Honeysuckle	10	2gal.
Pms	Pinus mugo 'Slow Mound'	Slow Mound Mugo Pine	31	2gal.
Pm	Pinus mugo pumilio	Dwarf Mugo Pine	10	2gal.
Ppgg	Picea pungens 'Glauca Globosa'	Dwarf Globe Blue Spruce	10	2gal.
Fs	Rhus aromatica	Fragrant Sumac	35	2gal.
SS	Rhus typhina	Staghorn Sumac	14	2gal.
Rb	Rosa Blanda	Smooth Rose (Pink)	38	2gal.
Rc	Rosa carolina	Carolina Rose	34	2gal.
Sb	Symphoricarpos albus	Snowberry	7	2gal.
CY	Taxus canadensis	Canadian Yew	32	2gal.

Ornamental Grasses	BOTANICAL NAME	COMMON NAME	COUNT	SIZE
Aq	Andropogon gerardii	Big bluestem	64	1gal.
IG	Sorghastrum nutans	Indian Grass	68	1gal.
LB	Schizachyrium scoparium	Little Blue Stem	160	1gal.
Pv	Panicum virgatum	Switch Grass	70	1gal.

Ferns	BOTANICAL NAME	COMMON NAME	COUNT	SIZE
MF	Adiantum pedatum	Northern Maidenhair Fern	30	1gal.
LF	Athyrium filix-femina	Lady Fern	59	1gal.
O	Matteuccia struthiopteris	Ostrich Fern	45	1gal.

Groundcovers	BOTANICAL NAME	COMMON NAME	COUNT	SIZE
k	Arctostaphylos uva-ursi	Kinnikinnick	72	9cm pot
cc	Cornus canadensis	Dogwood	70	9cm pot
gp	Gaultheria procumbens	Wintergreen	43	9cm pot

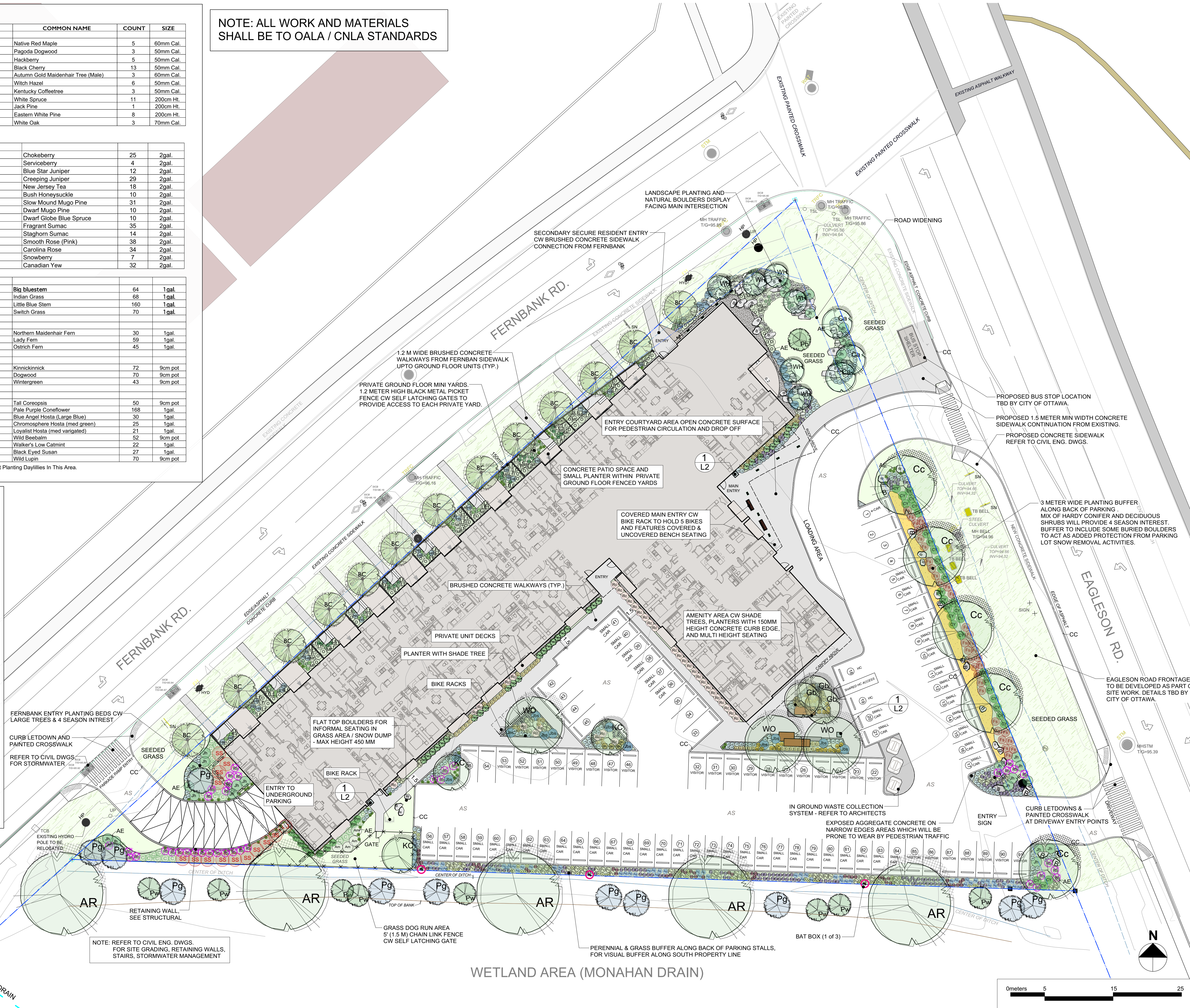
Perennials	BOTANICAL NAME	COMMON NAME	COUNT	SIZE
c	Coreopsis tripteris	Tall Coreopsis	50	9cm pot
Ep	Echinacea pallida	Pale Purple Coneflower	168	1gal.
HB	Hosta	Blue Angel Hosta (Large Blue)	30	1gal.
HBC	Hosta	Chromosphere Hosta (med green)	25	1gal.
HL	Hosta	Loyalist Hosta (med variegated)	21	1gal.
BB	Monarda fistulosa	Wild Beebalm	52	9cm pot
N	Nepeta x faassenii 'Walker's Low'	Walker's Low Catmint	22	1gal.
rg	Rudbeckia hirta	Black Eyed Susan	27	1gal.
lp	Lupinus perennis	Wild Lupin	70	9cm pot

\*For Consideration - Would Also Suggest Planting Daylilies In This Area.  
\*Planted 18" - 24" O.C.

NOTE: ALL WORK AND MATERIALS SHALL BE TO OALA / CNLA STANDARDS

**LEGEND**

- PROPERTY LINE
- PLANTING BED CW 2 1/2" DEPTH OF 3/4" WASHED CRUSH GROUND COVER ON APPROVED FILTER FABRIC LINER ON 450 MM MIN APPROVED GROWING MEDIUM FOR SHRUBS, 750 MM MIN DEPTH FOR TREES.
- GRASS AREA INSIDE PROPERTY TO BE SEEDED LAWN ON 150 MM MIN APPROVED GROWING MEDIUM BLEND EDGES TO MATCH BOULEVARD GRASS.
- EXISTING BOULEVARD GRASS AREAS TO BE RETAINED AND REPAIRED / REPLACED WHERE NECESSARY I.E. CULTIVATE, RESEED, AND FERTILIZE.
- BROOM FINISH CONCRETE WALKWAYS REFER TO CIVIL ENG. DWGS.
- EXPOSED AGGREGATE FINISH CONCRETE
- ASPHALT SURFACE REFER TO CIVIL ENG. DWGS.
- ROUNDSH BOULDERS 600 - 1200 MM DIA. AS LOCALLY AVAILABLE TO BE BURIED 1/2 - 3/4 BELOW FINISHED GRADE
- 1.2 METER HIGH BLACK METAL FENCE
- 1.8 METER HIGH BLACK CHAIN LINK DOG RUN FENCE
- 18" x 4" ALUMINUM EDGING OR APPROVED EQUIVALENT BETWEEN LAWN AND PLANTING BEDS
- 100 MM DEPTH WASHED DRAIN ROCK ON FILTER FABRIC CW 2" x 6" PRESSURE TREATED WOOD EDGING
- PROPOSED CONCRETE CURB - AS PER CIVIL ENG. DWGS.
- BIKE RACKS - CORA, OR APPROVED ALTERNATIVE
- BENCHES - WISBONE PARKER OR APPROVED ALTERNATIVE (2 Total)
- WASTE RECEPTICAL (2 Total)
- 24" x 18" x 5 7/8" 4 Chamber Bat Box, BCM Universal Four Chamber Premium Bat House or Approved Equipment (TOTAL: 3)
- Bat Box Mounted to Pressure-Treated 4" x 4" x 18' Post Cemented Minimum 1.2 Meter (4') into the Ground. See Post Provider Top.



Date	Revisions	By
05.07.2018	Draft For Review	LS
05.30.2018	Draft For Review	LS
06.13.2018	Draft For Review	LS
06.15.2018	Submission To City of Ottawa	LS
08.13.2018	Draft For Review	LS
08.27.2018	Submission To City of Ottawa	LS
11.25.2018	Submission To City of Ottawa	LS
12.14.2018	Draft For Review	LS
12.17.2018	SUBMIT TO CITY OF OTTAWA	LS
02.12.2019	RESUBMIT TO CITY OF OTTAWA	LS
03.05.2019	REVISED DESIGN FOR REVIEW	LS

**LAZZARIN SVISDAHL**  
LANDSCAPE ARCHITECTS

202-1300 1st Avenue, Prince George B.C. V2L 2Y3  
250-563-6158 www.lsla-landarch.com

Project  
**PROPOSED 6 STOREY APARTMENT DEVELOPMENT**  
800 Eagleson Rd.  
Ottawa, Ontario

Sheet Title  
**LANDSCAPE PLAN**

Date  
NOV. 21, 2018

Scale  
1:250

Drawn By  
LS

Project No.

Copyright reserved. This drawing and the drawings are, and at all times remain the exclusive property of Lazzarin Svisdahl Landscape Architects Ltd. and cannot be used or reproduced without the Landscape Architect's written consent.

Drawing No.  
**L1**