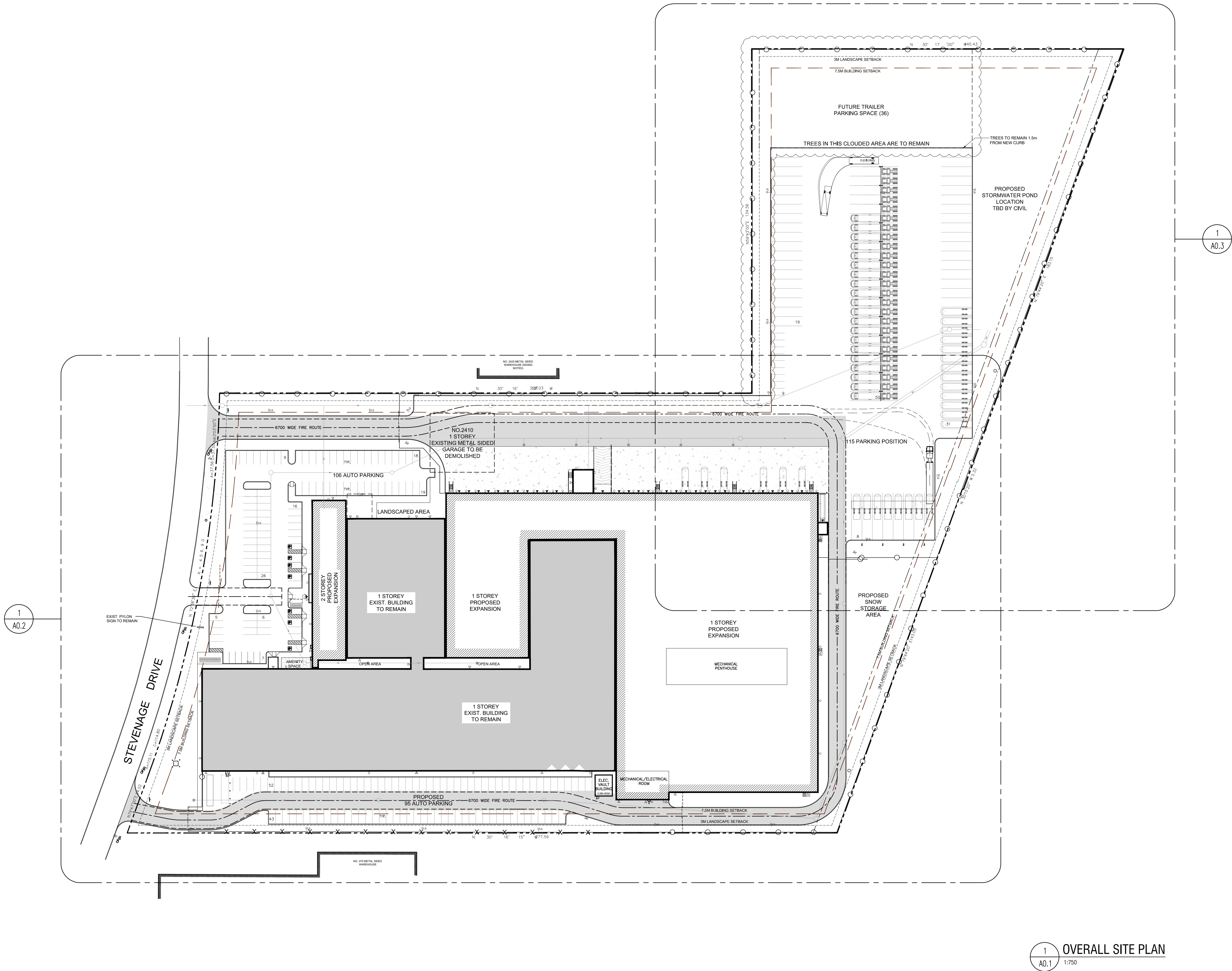
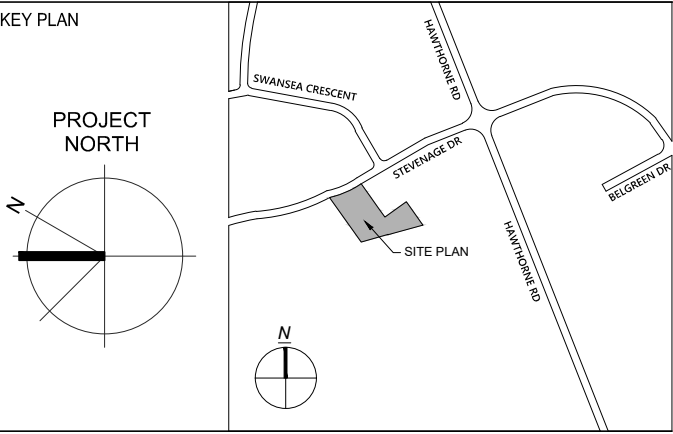


REV	DATE	DESCRIPTION
01	AUG 30, 2018	ISSUED FOR REVIEW
02	SEPT 11, 2018	ISSUED FOR SITE PLAN APPROVAL
03	JAN 15, 2019	RE-ISSUED FOR SITE PLAN APPROVAL
04	FEB 20, 2019	RE-ISSUED FOR SITE PLAN APPROVAL
05	FEB 27, 2019	ISSUED FOR BUILDING PERMIT



PROPERTY BOUNDARY INFORMATION WAS DERIVED FROM SURVEY OF:
PART OF LOTS 3 AND 4
CONCESSION 5 (RIDEAU FRONT)
GEOGRAPHIC TOWNSHIP OF GLOUCESTER, CITY OF OTTAWA
SURVEYED BY ANNIS, O'SULLIVAN, VOLLEBEKK LTD.
SURVEY COMPLETED ON AUGUST 22, 2018



Glenn Piotrowski Architect

ONTARIO ASSOCIATION OF ARCHITECTS
GLENN PIOTROWSKI ARCHITECT LTD.
167 NAVY STREET
OAKVILLE, ON
L6J 2Z6
905.338.8855

DESIGN BUILDER
BBS
BUILDING A REPUTATION ON EXCELLENCE
BBS CONSTRUCTION (ONTARIO) LTD.
1805 WOODWARD DRIVE,
OTTAWA, ON K2C 0P9 CANADA
TEL 613-226-8830 FAX 613-226-7709

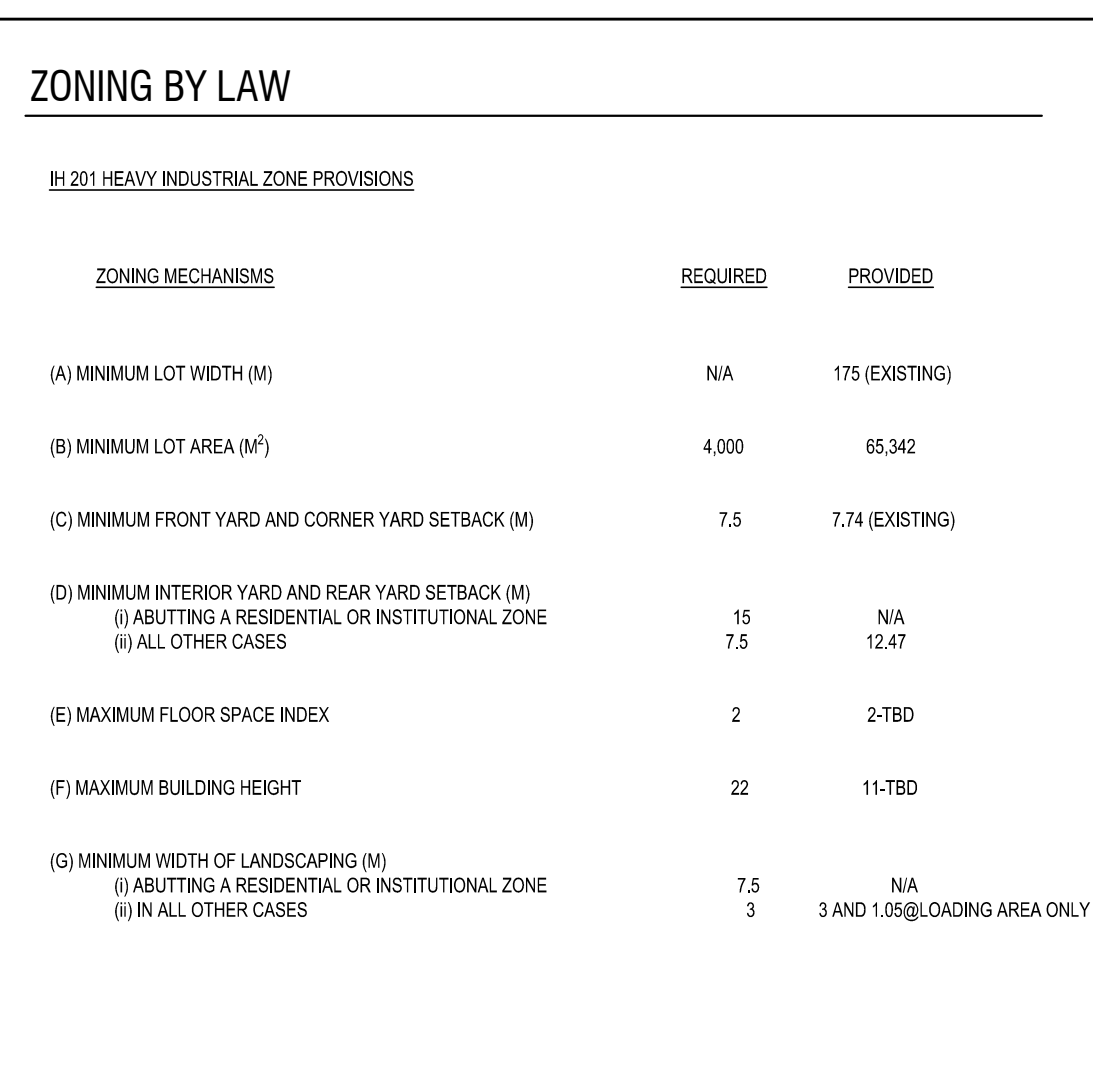
PROJECT
SYSCO TANNIS
FACILITY EXPANSION & SITE PLAN MODIFICATIONS

2390 STEVENAGE DRIVE, OTTAWA, ON K1G 3W3

SHEET TITLE
OVERALL SITE PLAN


DRAWN BY PY
DATE
SCALE 1:750
PROJECT NO.
SHEET NO.

A0.1
#17811

[illegible]

PROPERTY BOUNDARY INFORMATION WAS DERIVED FROM
SURVEY OF:
PART OF LOTS 3 AND 4
CONCESSION 5 (RIDEAU FRONT)
GEOGRAPHIC TOWNSHIP OF GLOUCESTER, CITY OF OTTAWA
SURVEYED BY ANNIS, O'SULLIVAN, VOLLEBEKK LTD.
SURVEY COMPLETED ON AUGUST 22, 2018




 OF
 ARCHITECTS
 GLENN PIOTROWSKI
 LICENCE
 3021

GLENN PIOTROWSKI ARCHITECT LTD.
 167 NAVY STREET
 OAKVILLE, ON.
 L6J 2Z6
 905.338.8855

DESIGN BUILDER



BUILDING A REPUTATION ON EXCELLENCE

BBS CONSTRUCTION (ONTARIO) LTD.
1805 WOODWARD DRIVE,
OTTAWA, ON K2C 0P9 CANADA
TEL 613-226-8830 FAX 613-226-7709

2390 STEVENAGE DRIVE, OTTAWA,
ON K1G 3W3

PARTIAL SITE PLAN

PARTIAL SITE PLAN

DRAWN BY _____ FY _____

DATE _____

SCALE 1:500

PROJECT NO.

SHEET NO. **A0 2**

AU.2
#17811



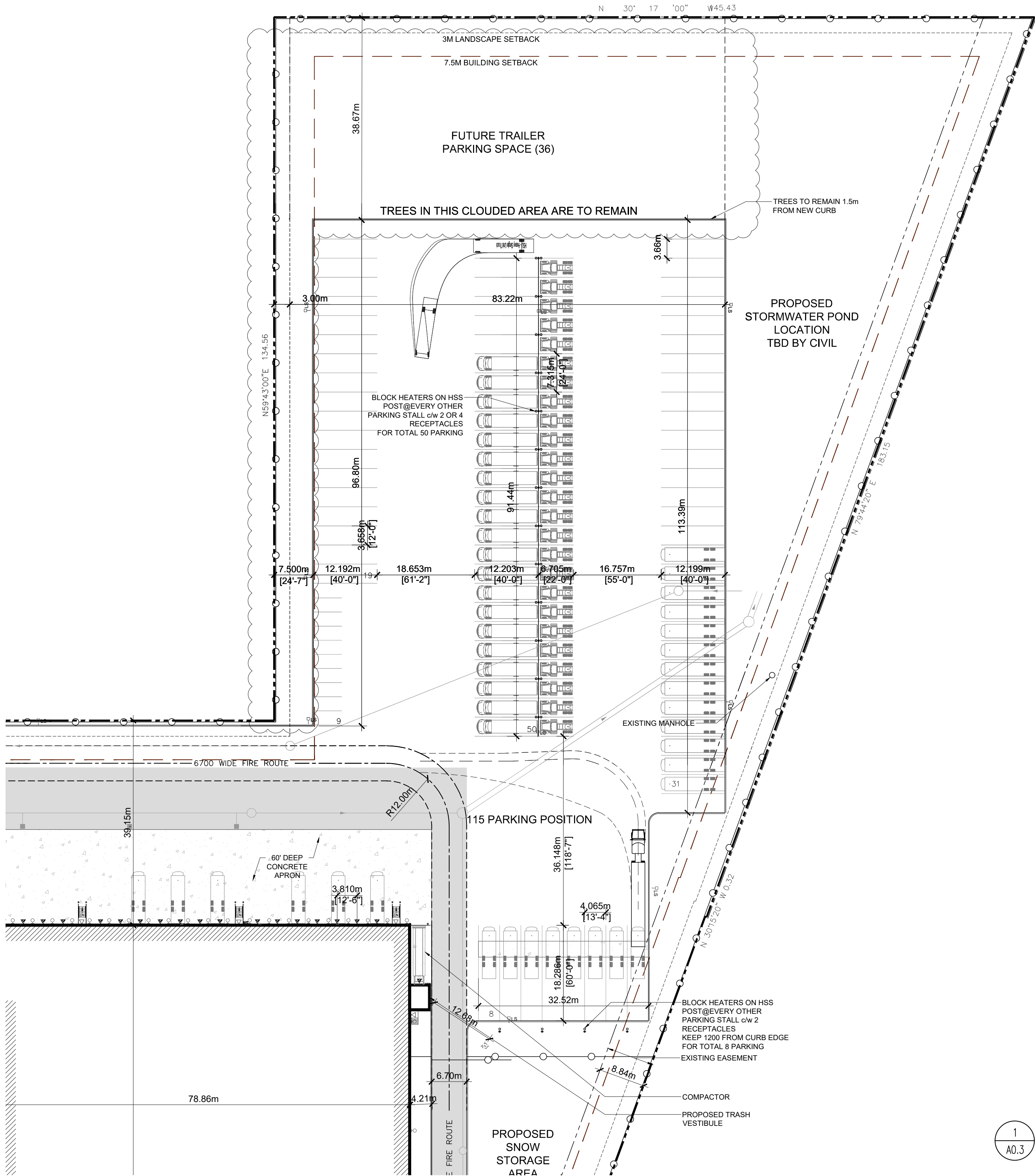
SHEET NO. A0.2

#17811

D07-12-18-0135

#17811

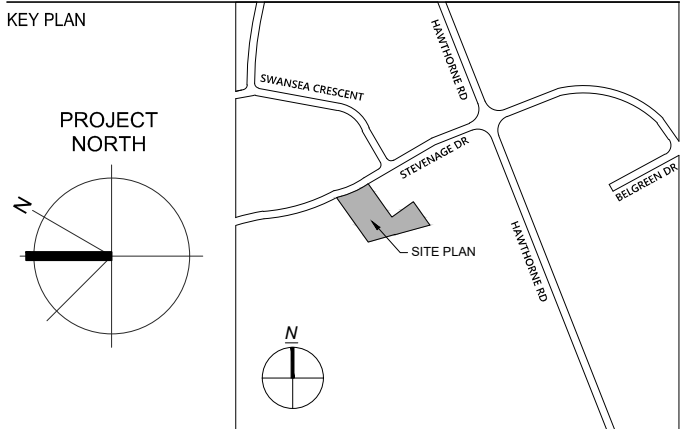
LEGEND			
+ 00.00	EXISTING SPOT ELEVATION	□ LS	NEW LIGHT POLE
+ 00.00	NEW SPOT ELEVATION	○	NEW WALL MOUNTED LIGHT
○	EXISTING TREE	■	HEAVY DUTY ASPHALT
Y SC	SIAMESE CONNECTION (WALL MOUNTED)	□	CONCRETE PAVING
▨	PAINTED LINES TYP.	△	EXIT/ACCESS DOOR
HC	BARRIER FREE RAMP C/W WITH CURB DEPRESSION IN COMPLIANCE WITH OBC 3.8.3.2 REFER TO SITE DETAIL	▲	SECURE EXIT/ACCESS DOOR
---	PROPERTY LINE	▲	O/H DOOR AT LOADING DOCKS
---	REQUIRED ROAD WIDENING SETBACK	ENTRANCE SIGNAGE	
---x---x---	EXISTING CHAIN LINK FENCE	SIGNAGE "DO NOT USE HORNS TO SIGNAL THE OPENING OF BAY DOORS"	
---	NEW CHAIN LINK FENCE	FC	FLUSH CURB
		TW	TOP OF RETAINING WALL
		TC	TOP OF CURB
		BC	BOTTOM OF CURB
		CBMH	CATCH BASIN MANHOLE
		GM	GAS METER
		○ EX. MH	EXISTING MANHOLE
		□ EX. HYD	EXISTING CITY HYDRANT
		◆ EX. LS	EXISTING LIGHT STANDARD
		□ EX. CB	EXISTING CATCH BASIN
		○ MH	MANHOLE
		□ HYD	CITY HYDRANT
		□ CB	CATCH BASIN
		□ CB	DOUBLE CATCH BASIN
		○ HC	HANDICAP PARKING SIGN
		⊖	VEHICULAR ENTRANCE SIGN
		⊕	BOLLARD
		⊕	PARKING COUNT
		⊕	PRINCIPAL ENTRANCE



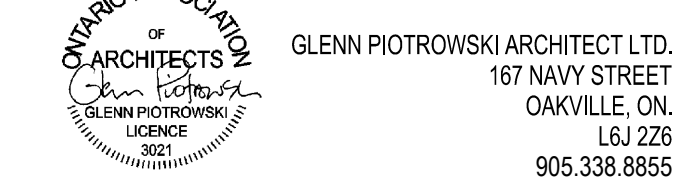
1 PARTIAL SITE PLAN
A0.3 1:500

REV	DATE	DESCRIPTION
01	AUG 30, 2018	ISSUED FOR REVIEW
02	SEPT 11, 2018	ISSUED FOR SITE PLAN APPROVAL
03	JAN 15, 2019	RE-ISSUED FOR SITE PLAN APPROVAL
04	FEB 20, 2019	RE-ISSUED FOR SITE PLAN APPROVAL
05	FEB 27, 2019	ISSUED FOR BUILDING PERMIT

PROPERTY BOUNDARY INFORMATION WAS DERIVED FROM SURVEY OF:
PART OF LOTS 3 AND 4
CONCESSION 5 (RIDEAU FRONT)
GEOGRAPHIC TOWNSHIP OF GLOUCESTER, CITY OF OTTAWA
SURVEYED BY ANNIS, O'SULLIVAN, VOLLEBEKK LTD.
SURVEY COMPLETED ON AUGUST 22, 2018



Glenn Piotrowski Architect



DESIGN BUILDER
BBS
BUILDING A REPUTATION ON EXCELLENCE
BBS CONSTRUCTION (ONTARIO) LTD.
1805 WOODWARD DRIVE,
OTTAWA, ON K2C 0P9 CANADA
TEL:613-226-8830 FAX:613-226-1709

PROJECT
SYSCO TANNIS
FACILITY EXPANSION & SITE PLAN MODIFICATIONS

2390 STEVENAGE DRIVE, OTTAWA, ON K1G 3W3

SHEET TITLE
PARTIAL SITE PLAN

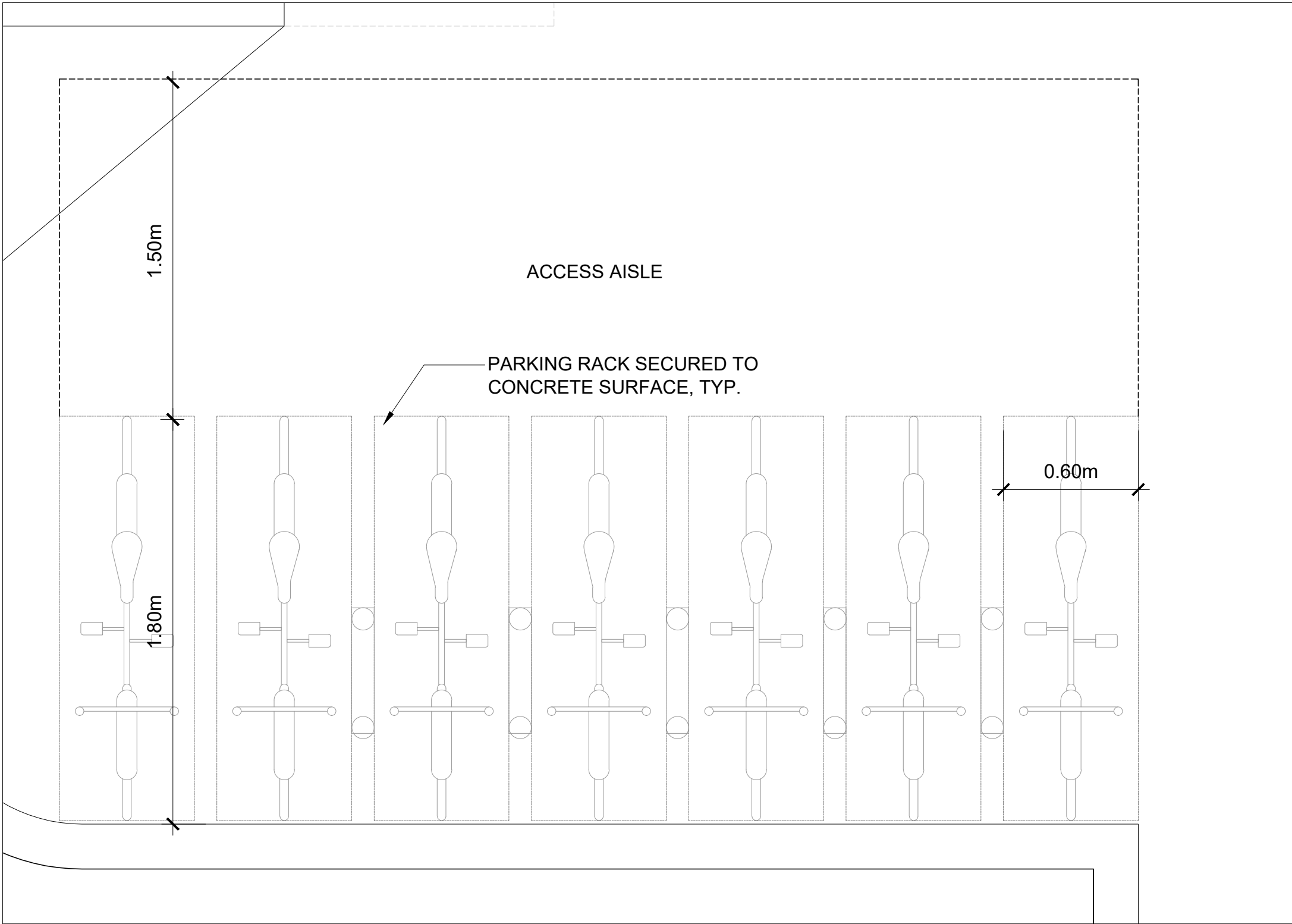
DRAWN BY	PY
DATE	
SCALE	1:500
PROJECT NO.	
SHEET NO.	

A0.3

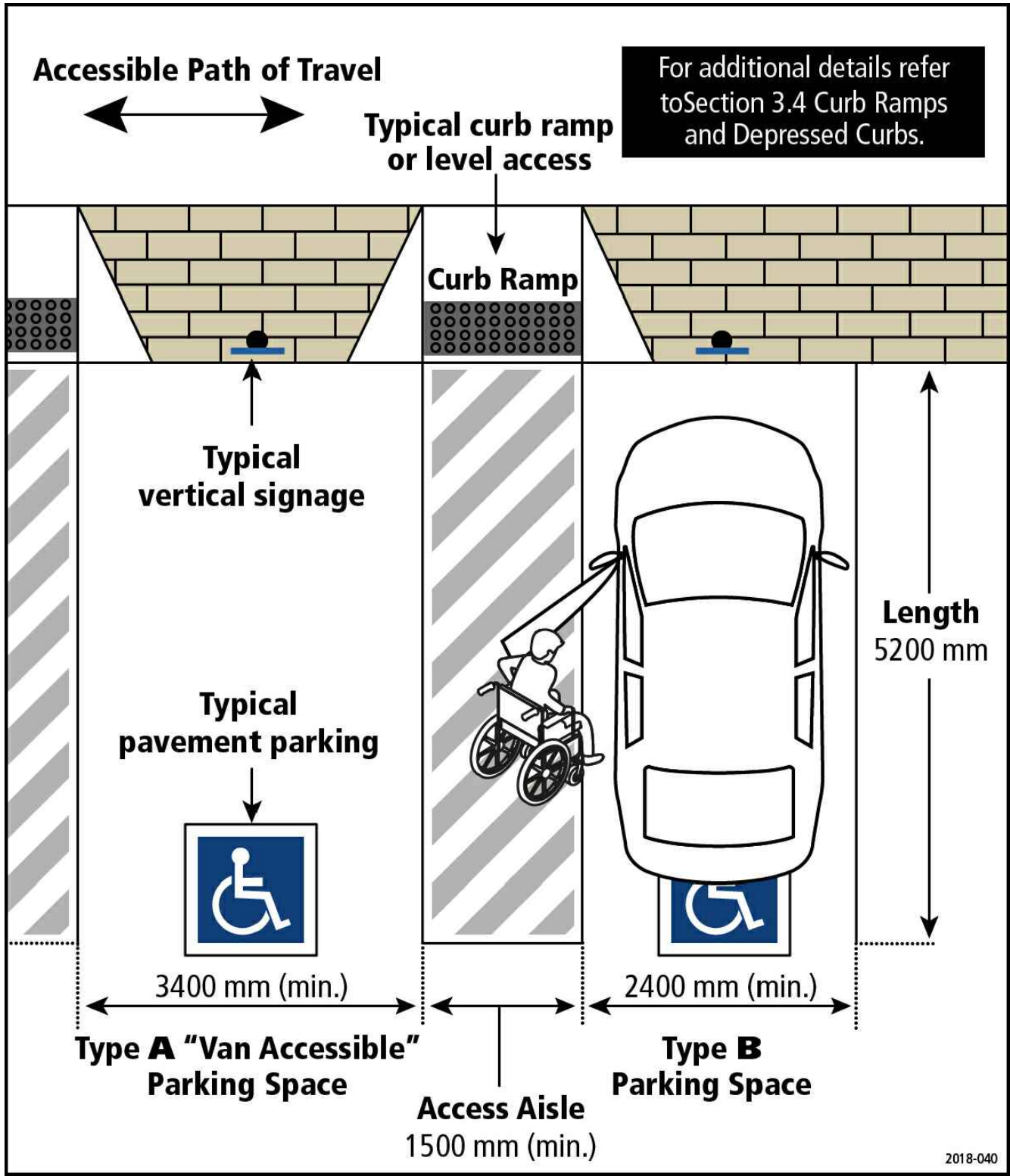
#17811

D07-12-18-0135

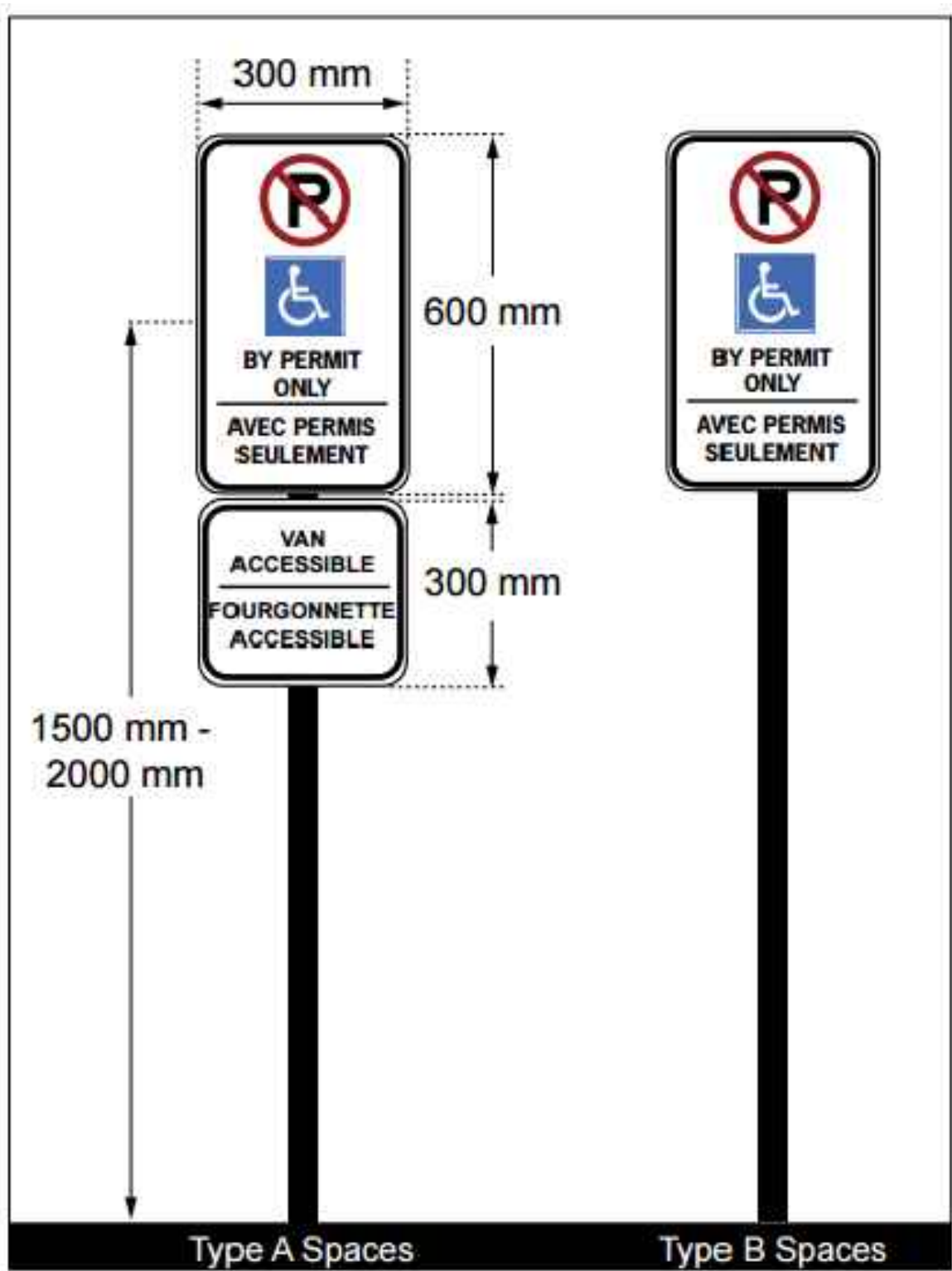
REV	DATE	DESCRIPTION
01	JAN 15, 2019	ISSUED FOR SITE PLAN APPROVAL
02	FEB 20, 2019	RE-ISSUED FOR SITE PLAN APPROVAL
03	FEB 27, 2019	ISSUED FOR BUILDING PERMIT



1 BICYCLE PARKING PLAN
A0.4 1:20



2 ACCESSIBLE PARKING DETAILS
A0.4 1:20



3 ACCESSIBLE PARKING SIGNAGE DETAILS
A0.4 1:20

