

APPROVED

By Jeff McEwen at 9:43 am, Mar 05, 2019

JEFF MCEWEN P.ENG.

MANAGER, DEVELOPMENT REVIEW EAST BRANCH
PLANNING, INFRASTRUCTURE & ECONOMIC
DEVELOPMENT DEPARTMENT, CITY OF OTTAWA

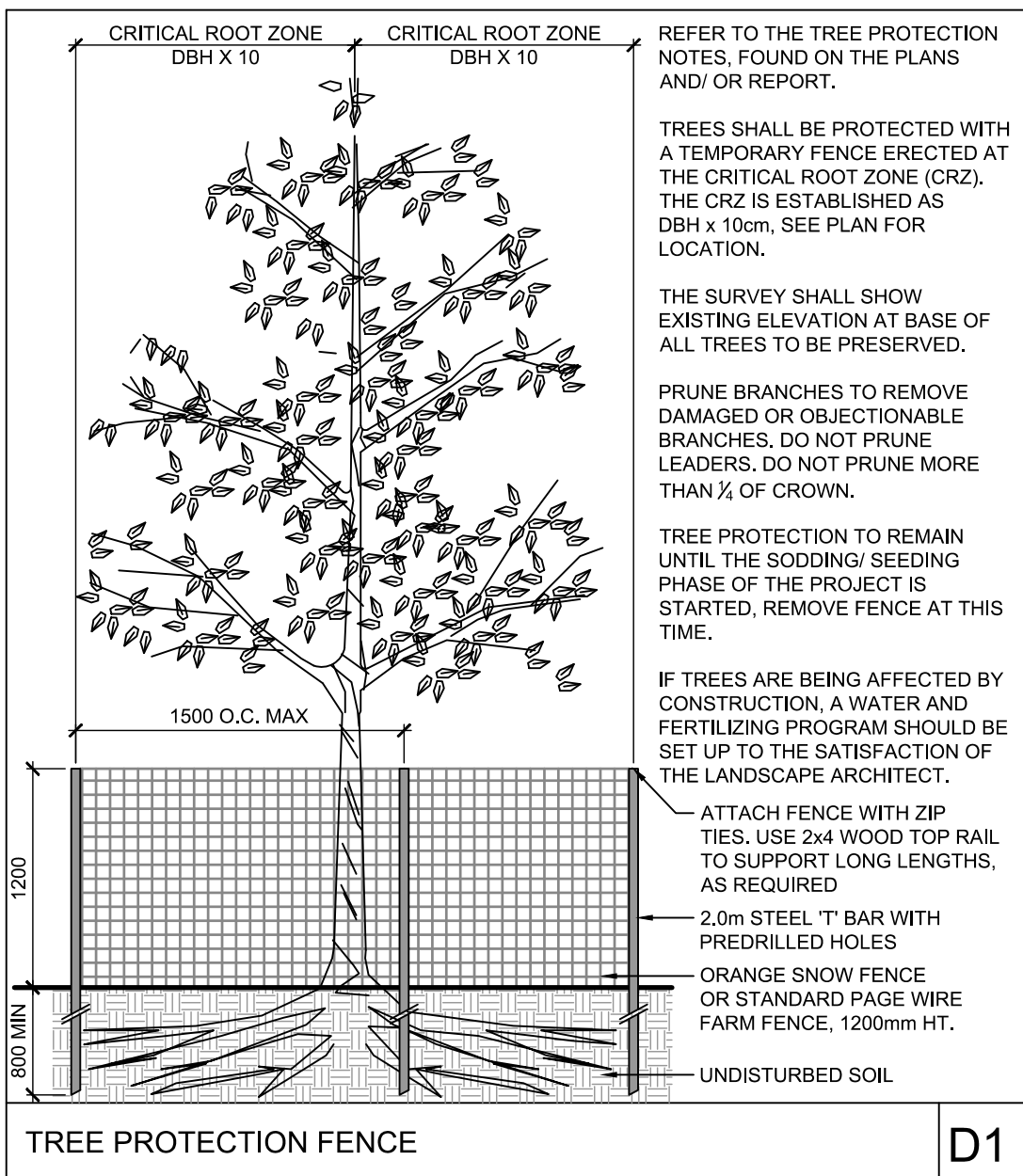
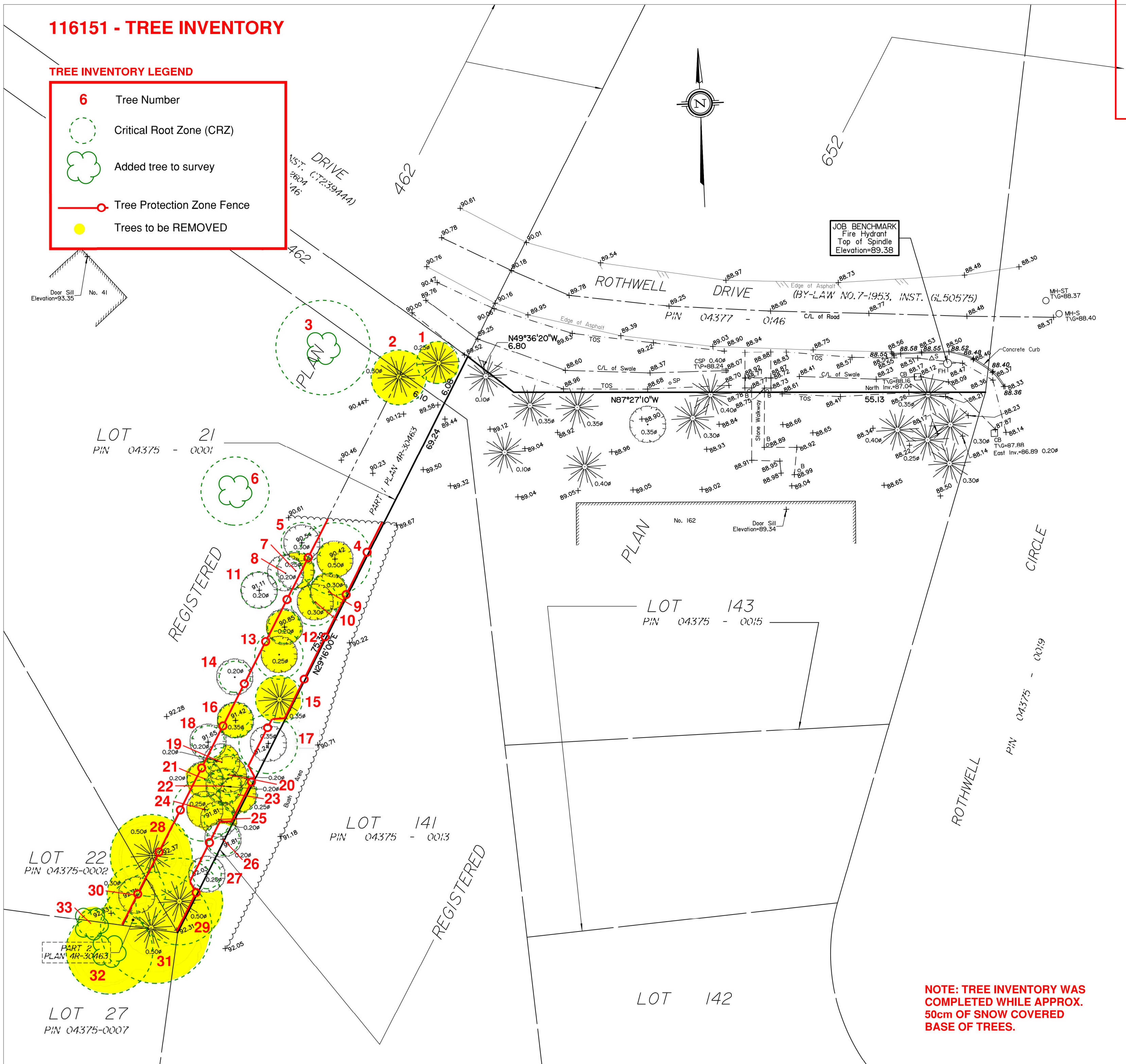
NORTH

KEY PLAN
N.T.S.

116151 - TREE INVENTORY

TREE INVENTORY LEGEND

- 6 Tree Number
- Critical Root Zone (CRZ)
- Added tree to survey
- Tree Protection Zone Fence
- Trees to be REMOVED



TREE PROTECTION NOTES

The following protection measures must be implemented for retained trees, both on site and on adjacent sites, prior to any tree removal or site works and maintained for the duration of construction on site:

- Under the guidance of a Landscape Architect or Certified Arborist, erect a fence at the critical root zone (CRZ) of trees where the CRZ is established as being 10 centimetres from the trunk of a tree for every centimetre of trunk diameter at breast height. The CRZ is calculated as DBH x 10cm. Refer to the Tree Protection Fence detail. See plan for fence location.
- When trees to be removed overlap with the CRZ of trees to be preserved: cut roots at the edge of the CRZ and grind down stumps, after tree removals, do not pull out stumps. Ensure there is not root pulling or disturbance of the ground within the CRZ.
- If roots must be cut, roots 20mm or larger should be cut at right angles with clean, sharp horticultural tools without tearing, crushing, or pulling. Refer to City of Ottawa Specification S.P. F-8011 Tree Protection, Excavation of Root Zone.
- Hand work only where required within the CRZ; absolutely no machinery permitted.
- Do not place any material or equipment within the CRZ of any tree.
- Do not attach any signs, notices or posters to any tree.
- Do not disturb, raise or lower the existing grade within the CRZ without approval.
- Only tunnel or bore when digging within the CRZ of a tree.
- Do not damage the root system, trunk, or branches or any tree.
- Ensure that exhaust fumes from all equipment are directed away from any tree canopy.

No.	Botanical Name	Common Name	DBH (m)	CRZ (m)	Condition	Remarks	Recomm.
1	Picea abies	Norway Spruce	0.25	2.50	G		Remove
2	Picea abies	Norway Spruce	0.33	3.30	G		Remove
3	Picea abies	Norway Spruce	0.56	5.60	G		Preserve
4	Acer saccharum	Sugar Maple	0.43	4.30	G	Lean	Remove
5	Acer saccharum	Sugar Maple	0.25	2.50	G		Preserve
6	Acer saccharum	Sugar Maple	0.41	4.10	G		Preserve
7	Acer saccharum	Sugar Maple	0.23	2.30	G		Remove
8	Ulmus americana	White Elm	0.18	1.80	G		Preserve
9	Ulmus americana	White Elm	0.23	2.30	G	Lean	Remove
10	Acer saccharum	Sugar Maple	0.28	2.80	F	Branch wound not healing	Remove
11	Ulmus americana	White Elm	0.22	2.20	G	feeding damage	Preserve
12	Acer saccharum	Sugar Maple	0.20	2.00	P	Large scars at ±2.5m above ground	Remove
13	Acer saccharum	Sugar Maple	0.29	2.90	G		Remove
14	Acer saccharum	Sugar Maple	0.19	1.90	P	Black Bark / Major wound	Preserve
15	Larix laricina	Tamarack	0.28	2.80	G		Remove
16	Acer saccharum	Sugar Maple	0.21	2.10	P	Split at 0.5m / Not healing well	Remove
17	Acer saccharum	Sugar Maple	0.35	3.50	P	Several open darkface wounds	Preserve
18	Acer saccharum	Sugar Maple	0.19	1.90	G		Preserve
19	Acer saccharum	Sugar Maple	0.17	1.70	G		Remove
20	Acer saccharum	Sugar Maple	0.24	2.40	P	Large wound near base	Remove
21	Acer saccharum	Sugar Maple	0.21	2.10	G		Remove
22	Acer saccharum	Sugar Maple	0.20	2.00	P	Black Bark	Remove
23	Acer saccharum	Sugar Maple	0.23	2.30	P	Black Bark	Remove
24	Ulmus americana	White Elm	0.36	3.60	G		Remove
25	Acer saccharum	Sugar Maple	0.18	1.80	P	Major wound at 0.5 to 1.0m above ground level	Remove
26	Acer saccharum	Sugar Maple	0.19	1.90	P	Black Bark	Preserve
27	Acer saccharum	Sugar Maple	0.17	1.70	F	Heavy competition from smaller neighbours	Preserve
28	Picea glauca	White Spruce	0.49	4.90	G		Remove
29	Picea glauca	White Spruce	0.51	5.10	G		Remove
30	Quercus rubra	Red Oak	0.35	3.50	G		Remove
31	Picea glauca	White Spruce	0.66	6.60	G		Remove
32	Acer saccharum	Sugar Maple	0.52	5.20	VP	Major limb lost and hung / Major wound near base	Remove
33	Acer saccharum	Sugar Maple	0.16	1.60	G		Remove

Legend
G Good
F Fair
P Poor
VP Very Poor

NOTE:
THE POSITION OF ALL POLE LINES, CONDUITS,
WATERMAINS, SEWERS AND OTHER
UNDERGROUND AND OVERGROUND UTILITIES AND
STRUCTURES IS NOT NECESSARILY SHOWN ON
THE CONTRACT DRAWINGS, AND WHERE SHOWN,
THE ACCURACY OF THE POSITION OF SUCH
UTILITIES AND STRUCTURES IS NOT GUARANTEED.
BEFORE STARTING WORK, DETERMINE THE EXACT
LOCATION OF ALL SUCH UTILITIES AND
STRUCTURES AND ASSUME ALL LIABILITY FOR
DAMAGE TO THEM.

NOT FOR
CONSTRUCTION

OWNER INFORMATION
CDRG+REDTEAM
1084 KENASTON ST UNIT #5
OTTAWA, ONTARIO, K1B 3P5

SIMON FRIGON
PHONE: (613) 736-9222
E-MAIL: storm@redteam.ca

No.	REVISION	DATE	BY
1.	ISSUE FOR SITE PLAN APPLICATION	MAR 29/18	RJ

SCALE

1:300

0 3 6 9 12

DESIGN

RJ

CHECKED

RJ

DRAWN

MT

CHECKED

RJ

APPROVED

RJ

FOR REVIEW ONLY



NOVATECH
Engineers, Planners & Landscape Architects
Suite 200, 240 Michael Cowpland Drive
Ottawa, Ontario, Canada K2M 1P6
Telephone (613) 254-9643
Facsimile (613) 254-5867
Website www.novatech-eng.com

LOCATION
1795 MONTREAL ROAD
OTTAWA, ONTARIO

DRAWING NAME

TREE CONSERVATION PLAN FOR
SERVICING EASEMENT

PROJECT No.

116151-00

REV

REV # 1

DRAWING No.

116151-TCR2

#17618