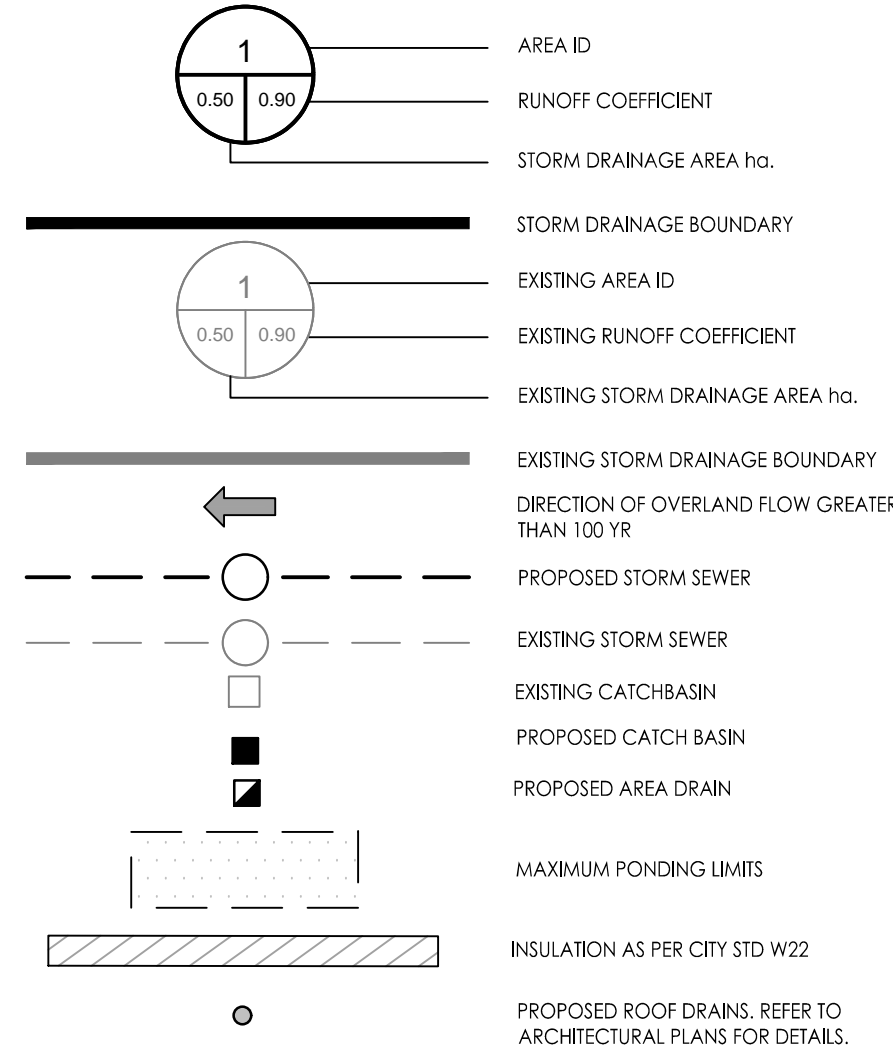


Legend



Notes

- INTERNAL PLUMBING AND SUMP PUMP TO BE DESIGNED BY THE MECHANICAL CONSULTANT.
- ESTIMATED 100-YEAR DRAINAGE FROM EXISTING DEVELOPMENT (APPROX. 61 L/S) TO BE PUMPED TO OUTLET DURING CONSTRUCTION.
- RUNOFF FROM PROPOSED DEVELOPMENT AREAS TO BE TREATED THROUGH AN OIL/GRIT SEPARATOR SIZED TO PROVIDE 80% TSS REMOVAL FOR A DRAINAGE AREA OF 0.48 HA AT 85% IMPERVIOUSNESS.
- TARGET PEAK FLOWS OF 396.1L/s AS PER 40 CLEARLY AVENUE STORMWATER MANAGEMENT REPORT DATED JANUARY 2007.

6	REVISED AS PER CITY COMMENTS	WAJ	SGG	18.10.10
5	REVISED AS PER CITY COMMENTS	WAJ	SGG	18.08.28
4	ISSUE FOR FOUNDATION PERMIT	SL	SGG	18.07.13
3	REVISED AS PER CITY COMMENTS	WAJ	SGG	18.06.29
2	REVISED AS PER CITY COMMENTS	WAJ	SGG	18.03.29
1	ISSUED FOR FIRST SUBMISSION	WAJ	SGG	17.10.05

Revision	By	Appd.	YY.MM.DD
File Name:	160401329-D8	WAJ	SGG
		Dwn.	Chkd.
		Dsgn.	YY.MM.DD

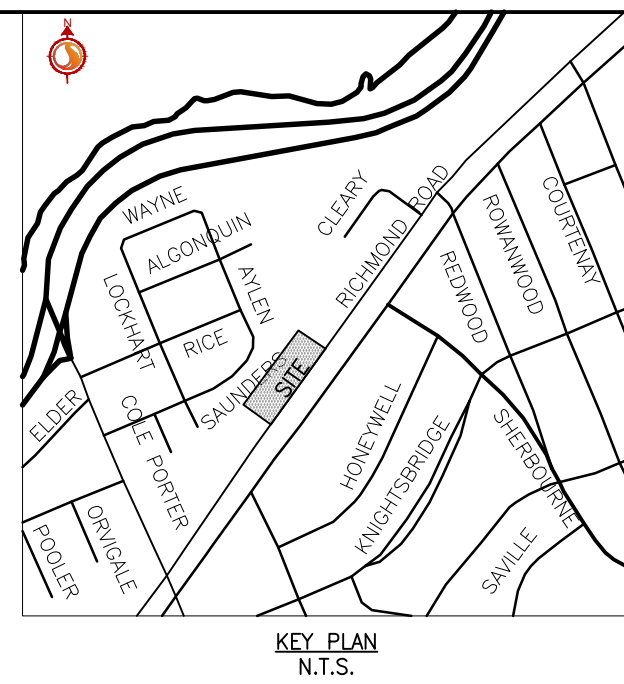
Permit-Seal

Client/Project
HOMESTEAD
HOMESTEAD LAND HOLDINGS LIMITED

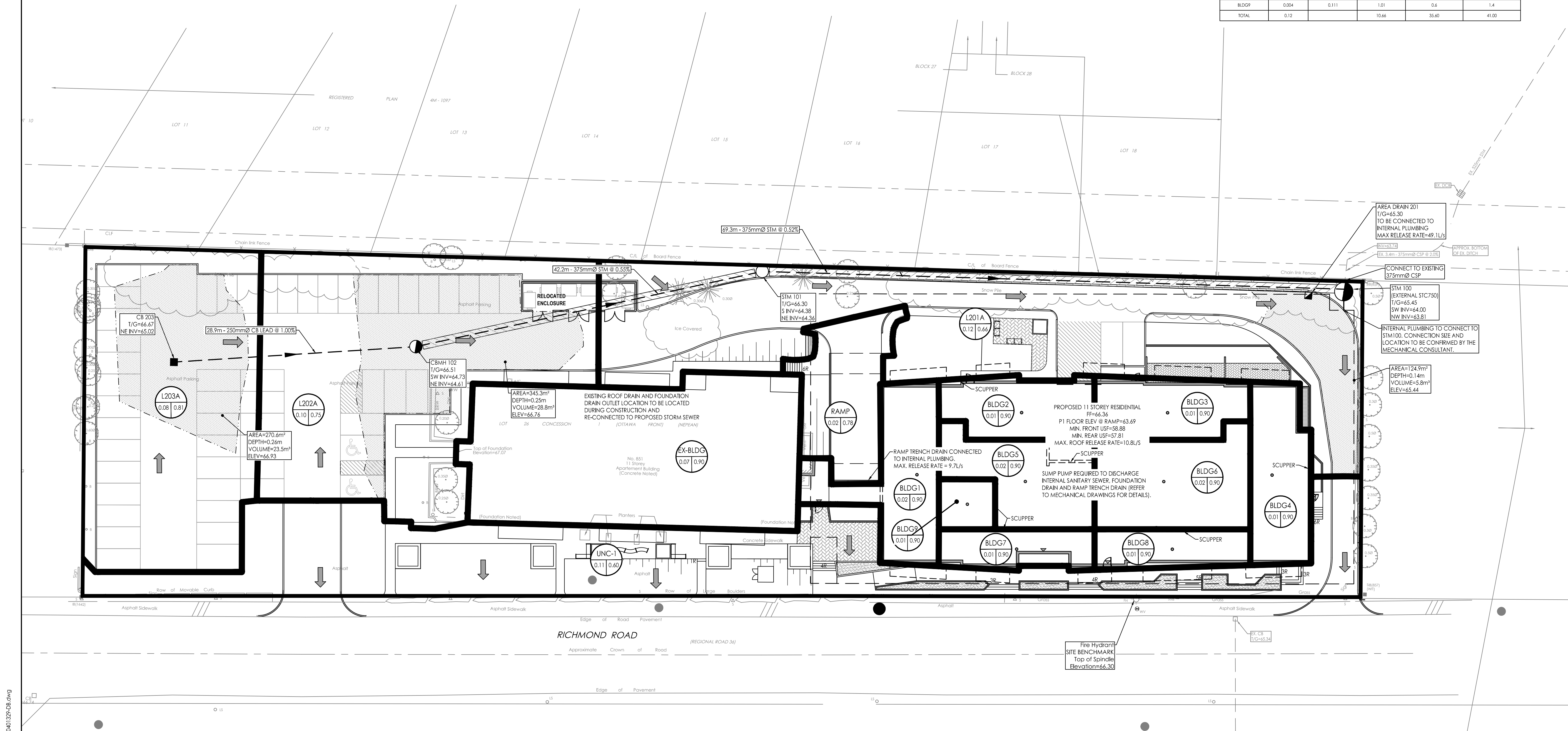
THE KENSINGTON
851 RICHMOND ROAD
OTTAWA, ON

Title
STORM DRAINAGE PLAN

Project No.	Scale	0 2.5 7.5 12.5m
160401329	1:250	
Drawing No.	Sheet	Revision
SD-1	5 of 6	6



100-YEAR ROOF DRAIN SCHEDULE					
AREA ID	AREA (m²)	HEAD (m)	RELEASE RATE (L/s)	REQUIRED VOLUME (m³)	AVAILABLE VOLUME (m³)
BLDG1	0.019	0.148	1.25	6.3	6.5
BLDG2	0.013	0.140	1.20	3.7	4.5
BLDG3	0.013	0.140	1.20	3.7	4.4
BLDG4	0.015	0.144	1.22	4.7	5.2
BLDG5	0.017	0.146	1.24	5.4	5.8
BLDG6	0.020	0.150	1.26	7.2	7.2
BLDG7	0.009	0.131	1.14	2.0	3.0
BLDG8	0.009	0.131	1.14	2.0	3.0
BLDG9	0.004	0.111	1.01	0.6	1.4
TOTAL	0.12		10.66	35.60	41.00



APPROVED
By Laurel McCreight at 8:54 am, Mar 01, 2019

Derrick Moodie

DERRICK MOODIE
MANAGER
PLANNING, INFRASTRUCTURE & ECONOMIC
DEVELOPMENT DEPARTMENT, CITY OF OTTAWA