

WINDOWS in TOWER

- aluminum
- colour: aluminum
- spandrel panels at floor assemblies



WINDOWS in PODIUM

- aluminum with multiple muntins
- colour: charcoal



frank street (north)elevation

ALUMINUM PANEL 1

- vertical joints
- wide panels
- colour: charcoal
- hidden fasteners



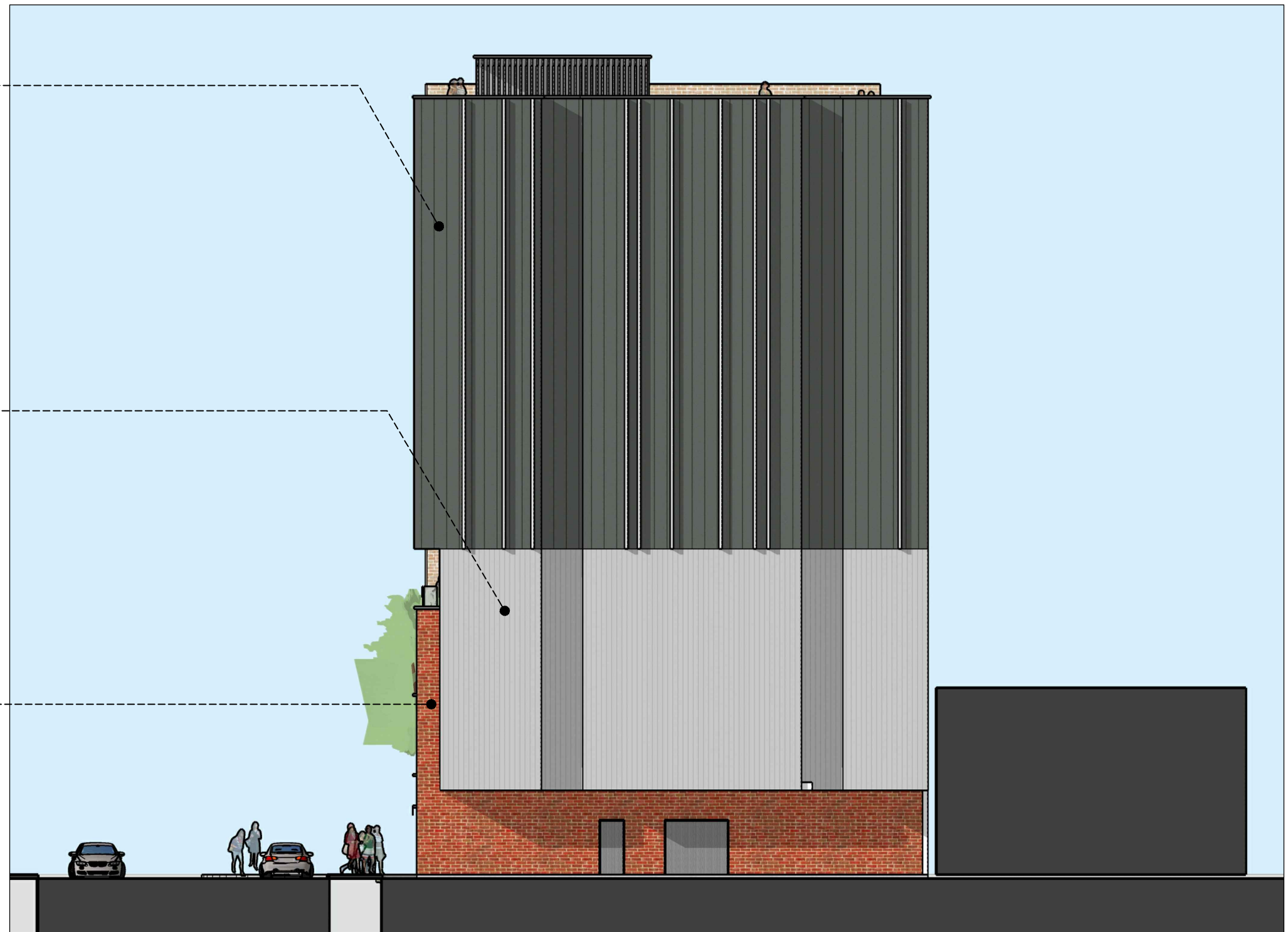
ALUMINUM PANEL 2

- vertical joints
- narrow panels
- colour: aluminum
- hidden fasteners



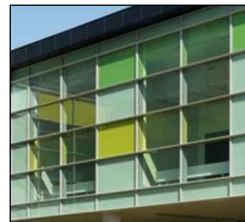
BRICK VENEER

- red brick with red mortar
- to match heritage 'Fauna' building



west elevation

SPANDREL PANELS
- multi-coloured
at floor levels



ALUMINUM PANEL 1

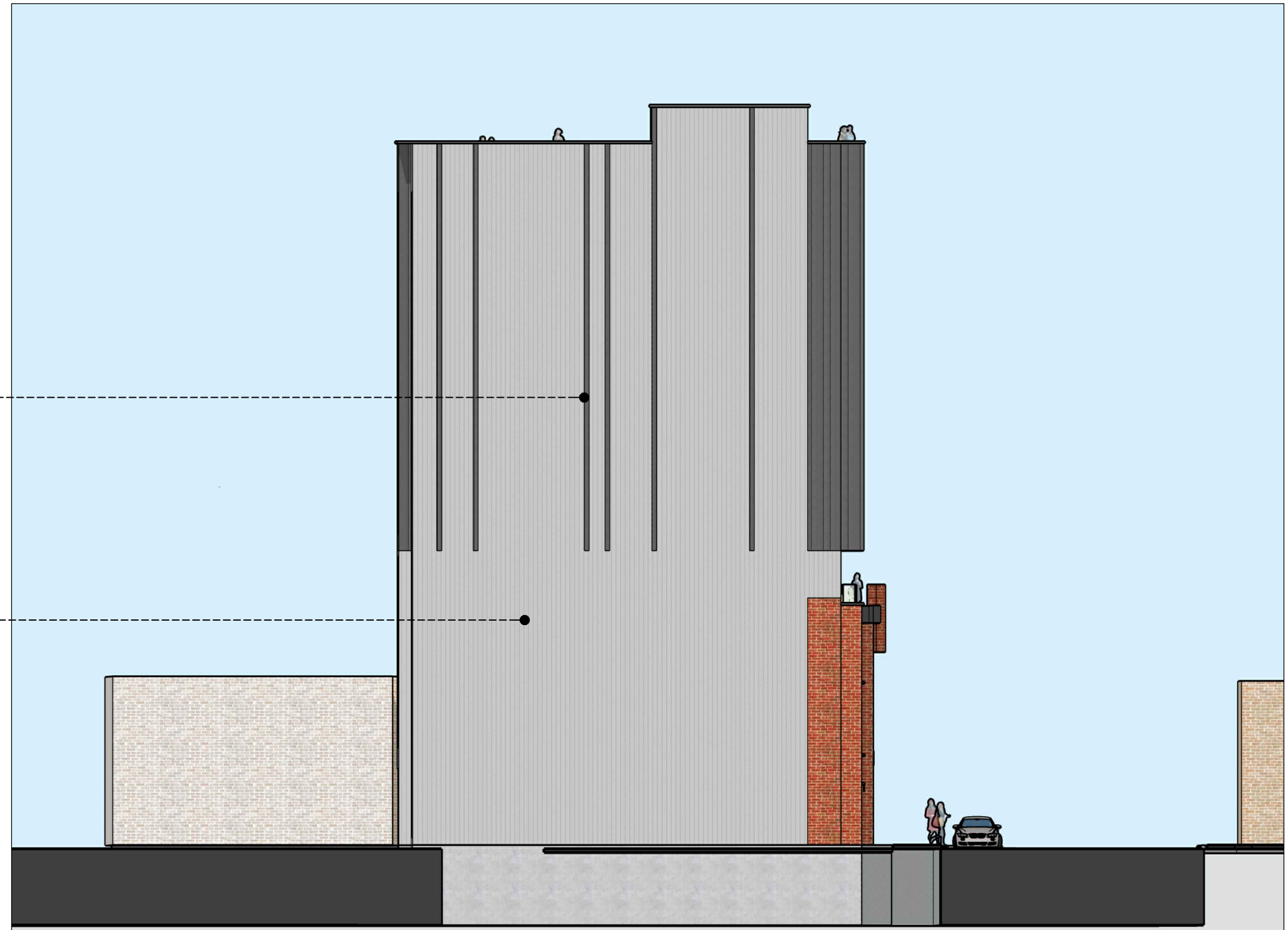
ALUMINUM PANEL 2



south elevation

ALUMINUM PANEL 1
- 8" bands to define bottom
of upper mass

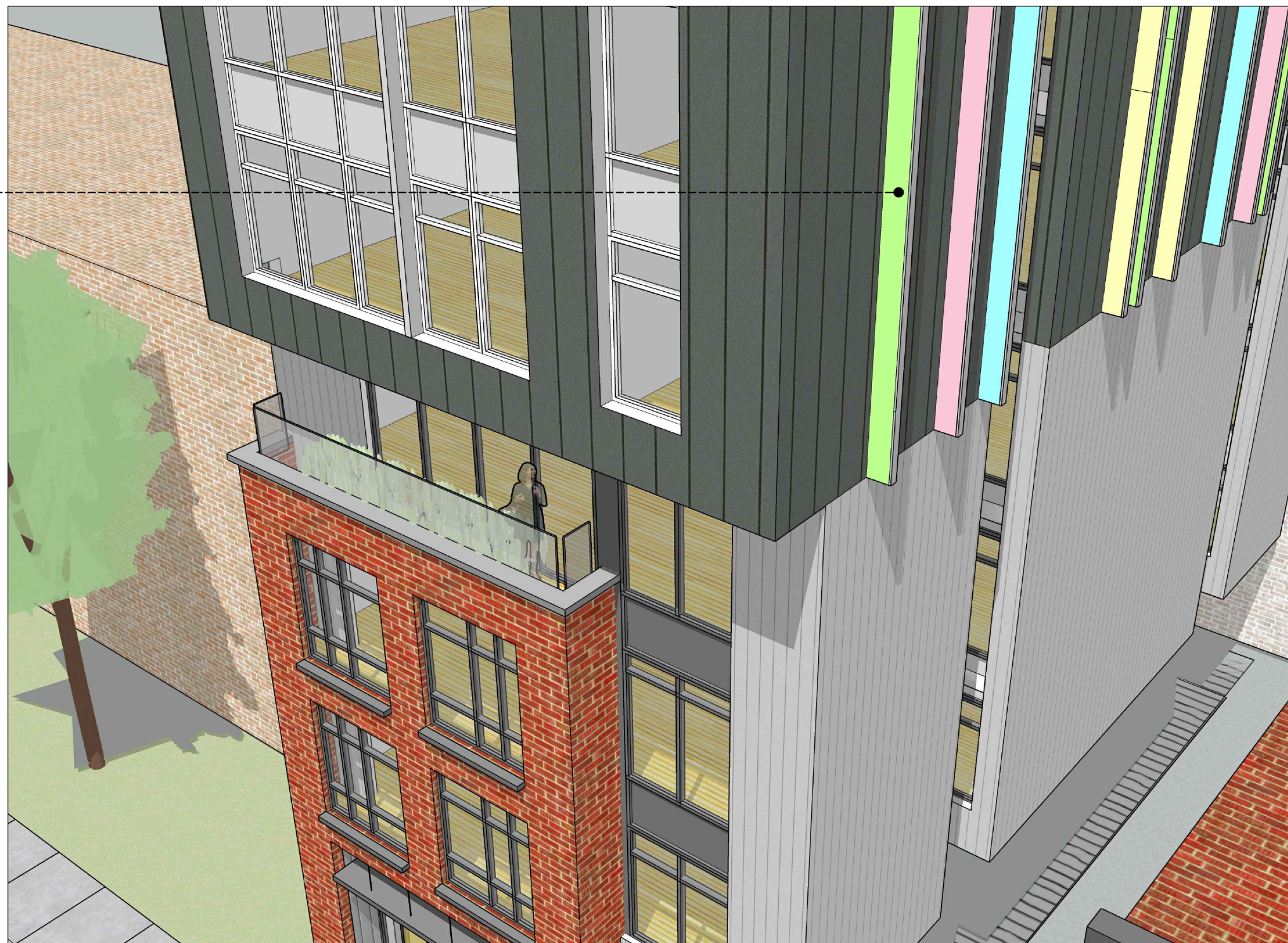
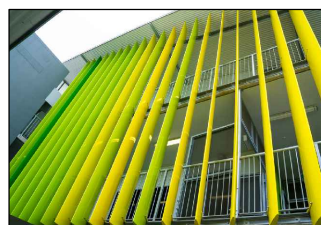
ALUMINUM PANEL 2



east elevation



WALL FINS
 - coloured on north side
 - acrylic or metal finish



west wall fins



full colours on display



colours begin to diminish



dark backdrop behind 'Fauna' building



light gray bands

WEST WALL CONCEPT - the west wall is intended to be a dynamic wall. It changes as one walks down Bank street where diverse bands of colours make themselves apparent for a bit of time until they disappear as one moves south.

Colours are drawn from the various pastels one finds in graffiti art and represent the diversity of the street and the greater centretown.