
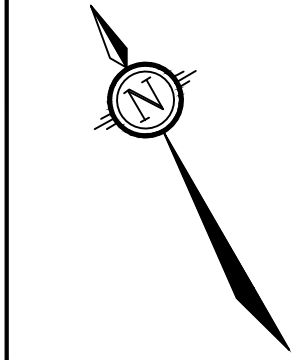
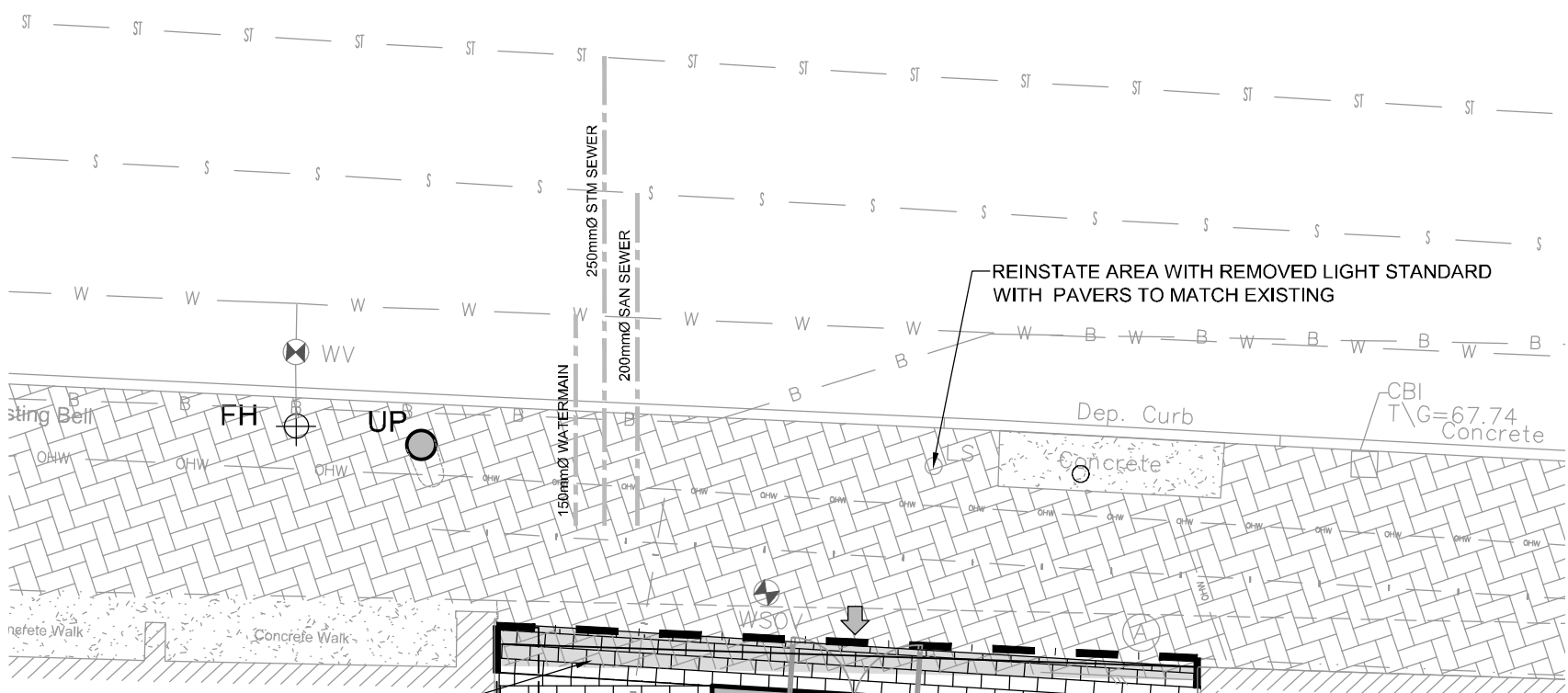


APPROVED
By Douglas James at 5:18 pm, Feb 20, 2019

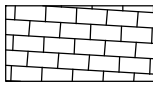



DOUGLAS JAMES, MCIP, RPP
MANAGER, DEVELOPMENT REVIEW - CENTRAL
PLANNING, INFRASTRUCTURE & ECONOMIC
DEVELOPMENT DEPARTMENT, CITY OF OTTAWA



NORTH



LANDSCAPE LEGEND:

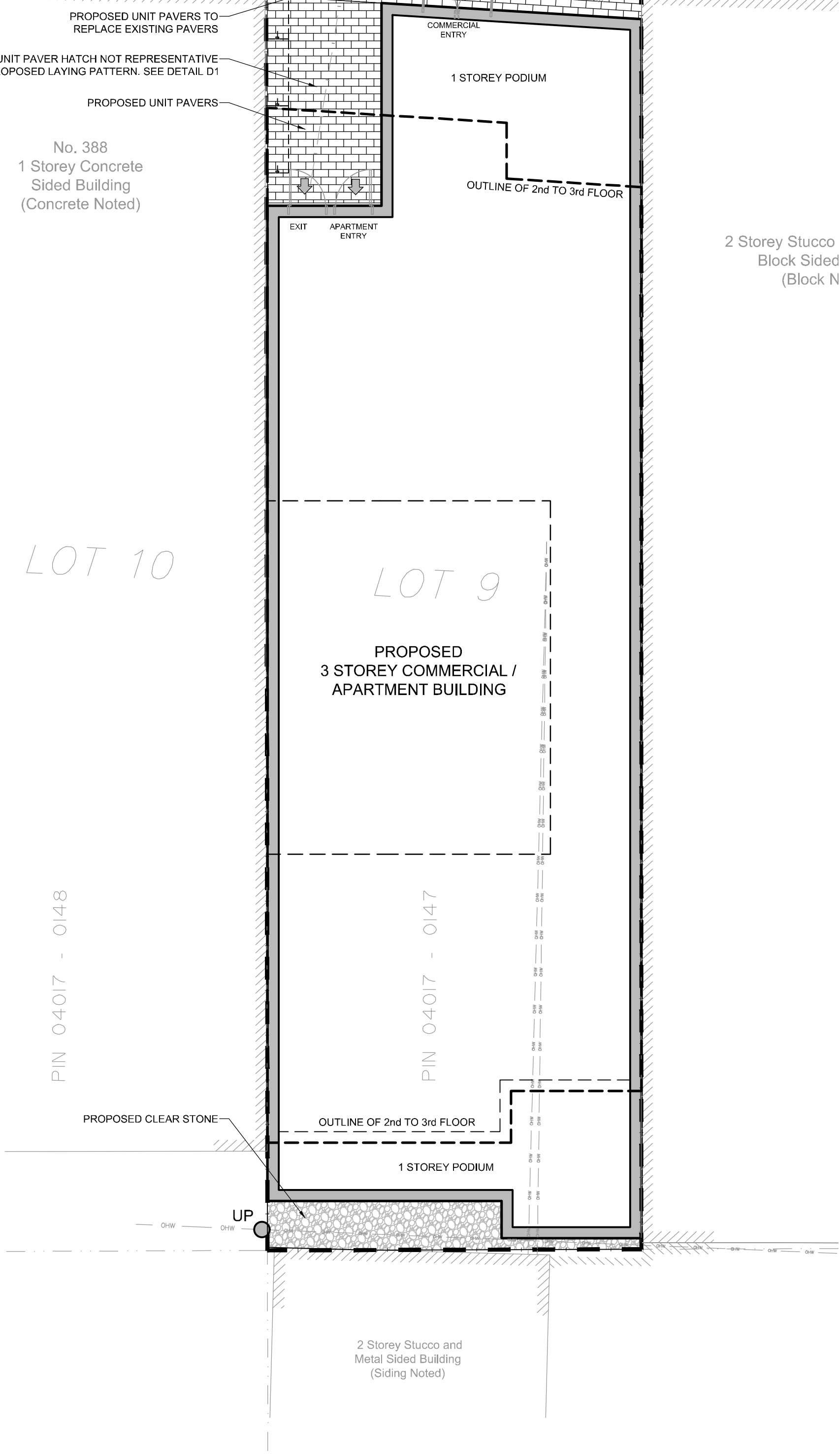
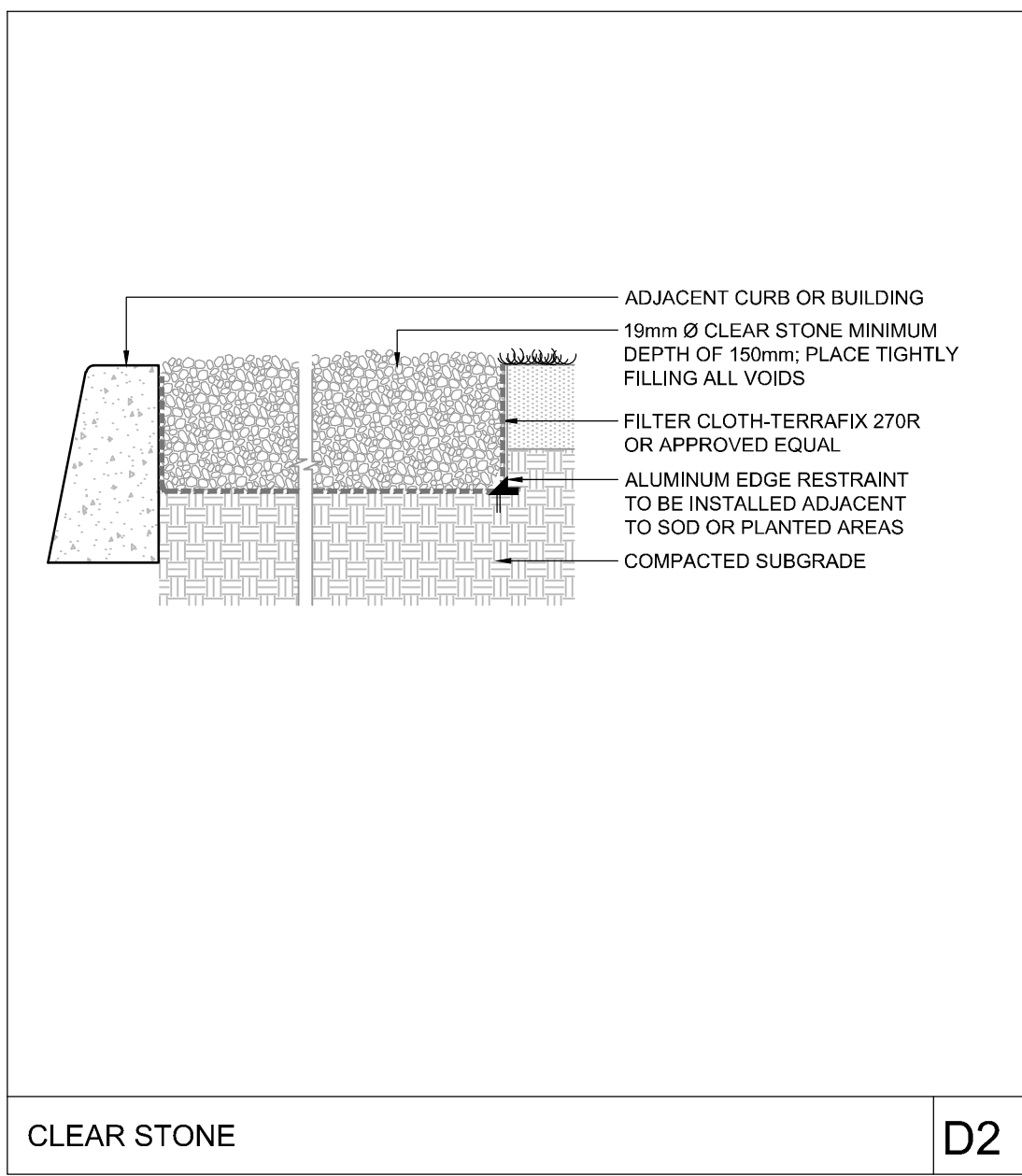
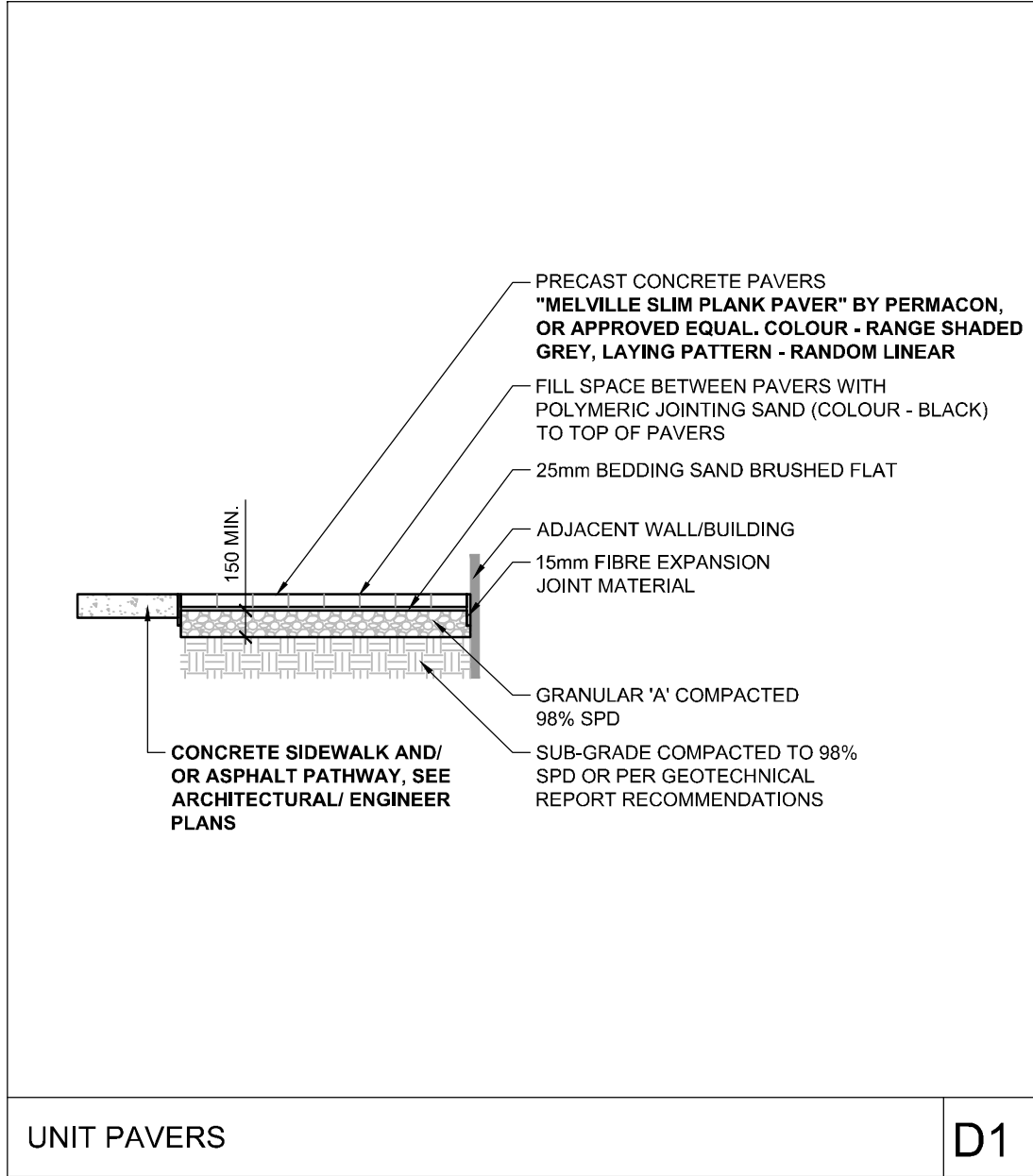
-  PROPOSED UNIT PAVERS. SEE DETAIL D1
-  PROPOSED UNIT PAVERS TO REPLACE EXISTING. SEE DETAIL D1
-  PROPOSED CLEAR STONE. SEE DETAIL D2

GENERAL NOTES:

- ALL GENERAL SITE INFORMATION AND CONDITIONS ARE COMPILED FROM CONSULTANT'S FIELD NOTES AND PLANS PROVIDED BY THE OWNER AND ARE SUPPLIED FOR INFORMATION PURPOSES ONLY. IT SHALL BE THE RESPONSIBILITY OF THE CONTRACTOR TO VERIFY THE ACCURACY OF ALL THE INFORMATION OBTAINED FROM THIS PLAN.
- CONTRACTOR TO CHECK AND REPORT ANY DISCREPANCIES BEFORE COMMENCING WORK. NO RESPONSIBILITY IS BORNE BY THE CONSULTANTS FOR UNKNOWN UTILITIES OR SUBSURFACE CONDITIONS.
- CONTRACTOR TO CHECK AND VERIFY ALL DIMENSIONS ON SITE AND REPORT ANY ERRORS OR OMISSIONS TO THE PROJECT MANAGER.
- DRAWINGS NOT TO BE SCALED. WORK TO DIMENSIONS ONLY.
- REFER TO ENGINEERING DRAWINGS FOR SITE SERVICING.
- THIS DRAWING IS TO BE READ AND INTERPRETED IN CONJUNCTION WITH THE CONTRACT DETAILS AND SPECIFICATIONS.
- CONTRACTOR IS RESPONSIBLE FOR ALL FEES ARISING FROM THE COMPLETION OF WORKS CONVEYED BY THESE DRAWINGS, DETAILS & SPECIFICATIONS. FEES INCLUDE BUT ARE NOT LIMITED TO SECURITIES, PERMIT FEES, DEPOSITS, APPLICATION FEES, LETTERS OF CREDIT, OR ANY OTHER RELATED FUNDING REQUESTS.
- ALL CONSTRUCTION TO BE CARRIED OUT IN ACCORDANCE WITH THE MOST CURRENT PROVINCIAL AND MUNICIPAL STANDARDS AND SPECIFICATIONS.
- CONTRACTOR TO COORDINATE ALL ACCESS AND PROTECT THE GENERAL PUBLIC AND USERS OF THE SITE WITH APPROPRIATE CONTROL FENCING AND SUPERVISION THROUGHOUT THE CONSTRUCTION PERIOD, TO THE SATISFACTION OF THE FACILITY MANAGER AND THE PROJECT MANAGER.
- CONTRACTOR RESPONSIBLE FOR THE REMOVAL AND OFF SITE DISPOSAL OF ALL MATERIALS AS REQUIRED TO FACILITATE NEW CONSTRUCTION. ALL ITEMS AND MATERIALS IDENTIFIED BY THE CONSULTANT TO BE SALVAGED SHALL BE STORED AT A LOCATION ON SITE AS IDENTIFIED BY THE CONSULTANT.
- SITE SHALL BE MAINTAINED IN A CLEAN AND ORDERLY STATE FOR THE DURATION OF CONSTRUCTION; ALL WORK SHALL BE PERFORMED IN ACCORDANCE WITH THE OCCUPATIONAL HEALTH AND SAFETY ACT.
- REINSTATE ALL AREAS AND ITEMS DAMAGED OR DISTURBED AS A RESULT OF CONSTRUCTION ACTIVITIES BEYOND THE LIMIT OF WORK TO THE SATISFACTION OF THE PROJECT MANAGER.

UNIT PAVING

- UNIT PAVERS SHALL BE PRECAST CONCRETE. SEE DETAIL D1.
- SETTING BED SHALL CONSIST OF CLEAR, WELL-GRADED MASONRY SAND.
- INSTALL GRANULAR BASE AND COMPACT TO A MINIMUM OF 98% STANDARD PROCTOR DENSITY UNTIL THE MINIMUM SPECIFIED DEPTH AS DETAILED HAS BEEN ESTABLISHED.
- LOOSELY PLACE BEDDING SAND TO A UNIFORM DEPTH OF 25MM MINIMUM.
- MAINTAIN JOINTS UNIFORMLY AND CLOSELY BUTTED THROUGHOUT.
- WHERE NECESSARY, SAW CUT PAVERS TO FIT ACCURATELY. PRODUCE A SHARP, VERTICAL CUT WITHOUT DAMAGED EDGES.
- AFTER COMPLETION OF INSTALLATION, COMPACT PAVING USING A VIBRATING PLATE TAMPER.
- FILL JOINTS WITH POLYMERIC SAND BY BRUSHING AND SWEEPING.
- HOSE PAVING WITH FINE WATER SPRAY, PER MANUFACTURER'S SPECIFICATIONS.



NOTE:
THE POSITION OF ALL POLE LINES, CONDUITS,
WATERMANS, SEWERS AND OTHER
UNDERGROUND AND OVERGROUND UTILITIES AND
STRUCTURES IS NOT NECESSARILY SHOWN ON
THE CONTRACT DRAWINGS, AND WHERE SHOWN,
THE ACCURACY OF THE POSITION OF SUCH
UTILITIES AND STRUCTURES IS NOT GUARANTEED.
BEFORE STARTING WORK, DETERMINE THE EXACT
LOCATION OF ALL SUCH UTILITIES AND
STRUCTURES AND ASSUME ALL LIABILITY FOR
DAMAGE TO THEM.

**NOT FOR
CONSTRUCTION**

No.	REVISION	DATE	BY
5.	ISSUED FOR SITE PLAN CONTROL	JAN 28/19	RJ
4.	SITE PLAN CONTROL THIRD SUBMISSION	NOV 1/18	RJ
3.	SITE PLAN CONTROL SECOND SUBMISSION	FEB 8 /18	RJ
2.	SITE PLAN CONTROL	OCT. 5 /17	RJ
1.	ISSUED FOR COORDINATION	SEP. 26/17	RJ

SCALE
1:100
0 1 2 3 4

DESIGN
RJ
CHECKED
RJ
DRAWN
MT
CHECKED
RJ
APPROVED
RJ

FOR REVIEW ONLY



NOVATECH
Engineers, Planners & Landscape Architects
Suite 200, 240 Michael Cowpland Drive
Ottawa, Ontario, Canada K2M 1P6
Telephone (613) 254-9643
Facsimile (613) 254-5867
Website www.novatech-eng.com

LOCATION CITY of OTTAWA 386 RICHMOND ROAD	PROJECT No. 117158-00
DRAWING NAME LANDSCAPE PLAN	REV # 5
	DRAWING No. 117158-L

M:\2017\117158\CAD\Landscaping\Plan\117158-L.dwg, L:\Jan 28, 2019 - 10:40am, mtroulen