

PROPOSED PLANT LIST

QTY.
KEY

KEY	QTY.	BOTANICAL NAME	COMMON NAME	SIZE	CONDITION	REMARKS
-----	------	----------------	-------------	------	-----------	---------

TREES

SB	3	Amelanchier canadensis	Shadblow Serviceberry	60mm ø	B&B	
HA	3	Crataegus crus-galli var. inermis	Thornless Cockspur Hawthorne	60mm ø	B&B	
JL	2	Syringa reticulata	Japanese Tree Lilac	60mm ø	B&B	

SHRUBS & ORNAMENTAL GRASSES

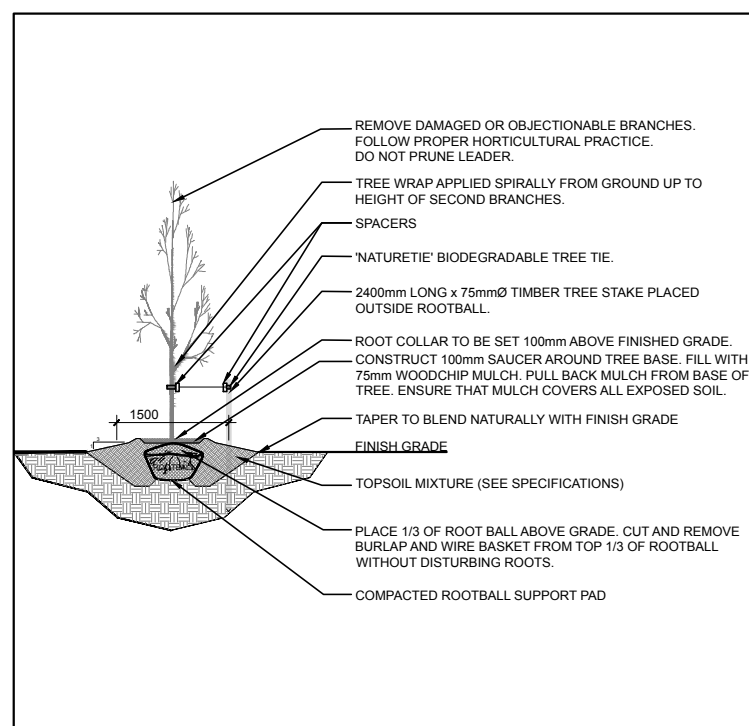
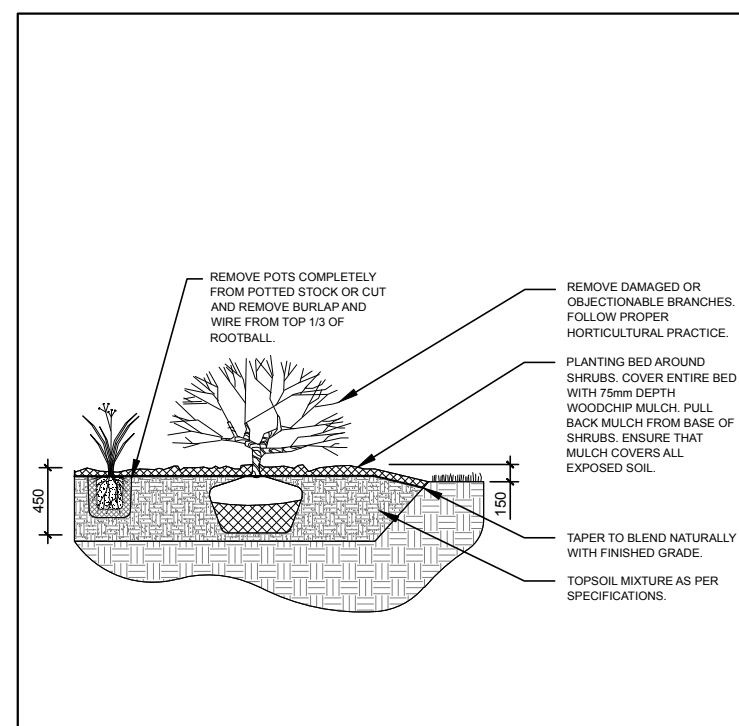
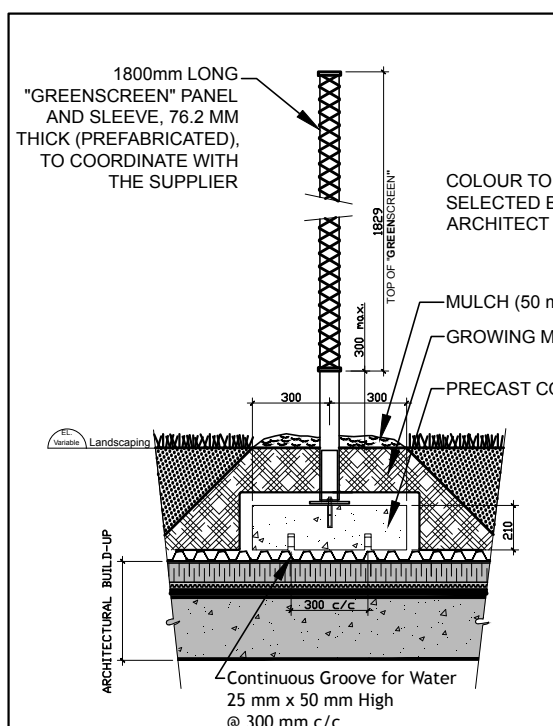
BB	6	Berberis thunbergii 'Burgundy'	Royal Burgundy Barberry	400mm ht.	Potted	800 mm o.c.
AC	13	Hydrangea arborescens 'Annabelle'	Annabelle Hydrangea	1 gallon pot	Potted	1000 mm o.c.
AC	8	Ribes alpinum	Alpine Currant	600mm ht.	Potted	800 mm o.c.
FS	8	Sorbaria sorbifolia 'Sem'	Sem False Spirea	400mm ht.	Potted	800 mm o.c.
SN	12	Symphoricarpos albus	Snowberry	600mm ht.	Potted	800 mm o.c.
CB	4	Symphoricarpos chenaultii	Hancock Coralberry	600mm ht.	Potted	800 mm o.c.
YG	5	Yucca glauca	Spanish Bayonet	3 gal. pot	Potted	800 mm o.c.

PERENNIALS, VINES & ORNAMENTAL GRASSES

KF	14	Calamagrostis 'Karl Foerster'	Karl Foerster Grass	250mm pot	Potted	800 mm o.c.
BA	12	Hosta 'Blue Angel'	Blue Angel Hosta	150mm pot	Potted	600 mm o.c.
VW	20	Hosta undulata 'Alba Marginata'	Vergil White Hosta	150mm pot	Potted	400 mm o.c.
RG	18	Phlox arundinacea	Strawberries & Cream	250mm pot	Potted	600 mm o.c.
PC	8	Parthenocissus quinquefolia	Ribbon Grass	1 gallon pot	Potted	Train up fence
AJ	16	Sedum 'Autumn Joy'	Autumn Joy	150mm pot	Potted	400 mm o.c.

GENERAL NOTES:

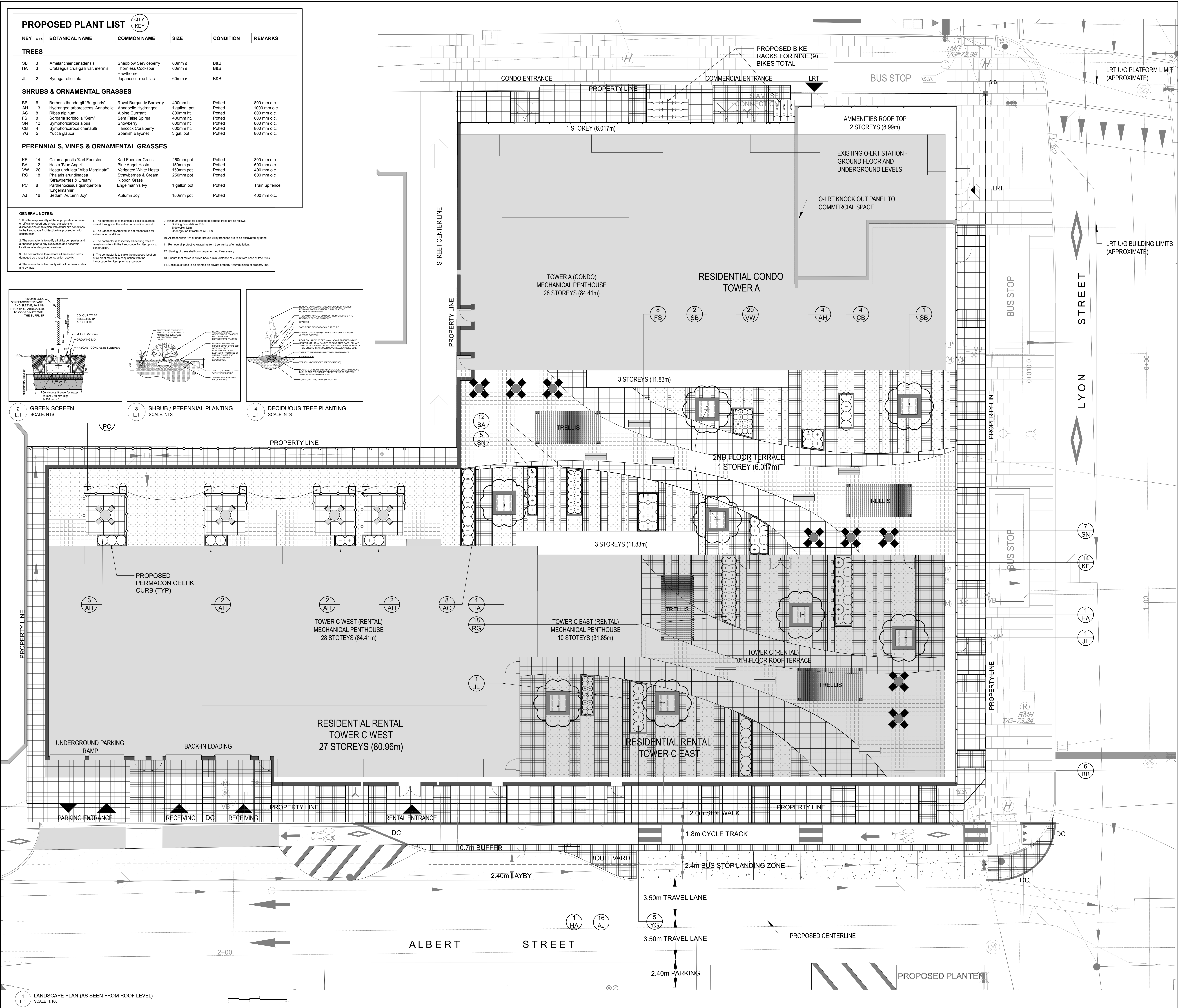
- It is the responsibility of the appropriate contractor or effort to plant any extra, variations or discrepancies on this plan with actual site conditions to the Landscape Architect before proceeding with construction.
- The contractor is to verify all utility companies and authorities prior to any excavation and ascertain locations of underground services.
- The contractor is to maintain a positive surface runoff throughout the entire construction period.
- The Landscape Architect is not responsible for subsurface conditions.
- The contractor is to identify all existing trees to remain on site with the Landscape Architect prior to construction.
- The contractor is to stake the proposed location of all plant material in consultation with the Landscape Architect prior to excavation.
- Minimum distances for selected deciduous trees are as follows:
 - Building Foundations 7.5m
 - Sidewalks 1.5m
 - Underground Infrastructure 2.0m
- All trees within 1m of underground utility trenches are to be excavated by hand.
- Remove all protective wrapping from tree trunks after installation.
- Staking of trees shall only be performed if necessary.
- Ensure that much is pulled back a min. distance of 30mm from base of tree trunk.
- Deciduous trees to be planted on private property 450mm inside of property line.



2 L1
GREEN SCREEN
SCALE: NTS

3 L1
SHRUB / PERENNIAL PLANTING
SCALE: NTS

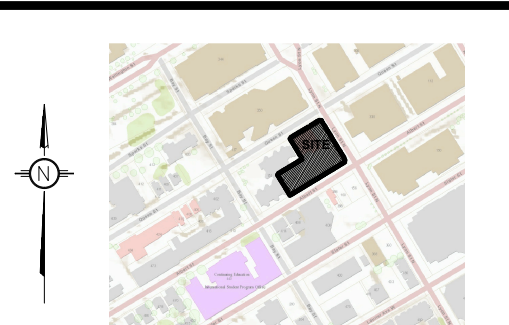
4 L1
DECIDUOUS TREE PLANTING
SCALE: NTS



CLIENT: **Claridge Homes**

210 Gladstone Ave., Suite 2001
Ottawa, ON
Tel: (613) 233-0030

LOCATION PLAN



CONSULTANTS

ARCHITECTS: **NEUF architect(s)**
630 boul. René-Lévesque O. 32e étage
Montréal, QC
Tel: (514) 947-1117

SURVEYORS: **Annis, O'Sullivan, Vollbrecht Ltd.**
14 Concourse Gate, Suite 500
Nepean, ON
Tel: (613) 727-8850

STRUCTURAL ENGINEERS: **Goodeve Manhire Partners Inc.**
77 Auriga Drive, Suite 18
Ottawa, ON
Tel: (613) 226-4558

MECHANICAL AND ELECTRICAL ENGINEERS: **Quadrant Engineering Ltd.**
1407 Preston Ave.
Ottawa, ON
Tel: (613) 967-1487

CIVIL ENGINEERS: **Novatech Engineering Consultants Ltd.**
2401 Michael Cowland Dr., Suite 200
Ottawa, ON
Tel: (613) 224-9543

LEGEND

- PROPOSED DECIDUOUS TREE
- PROPOSED PERMACON CASSARA VERDE PAVER "RANGE SHADED GREY" VEGETATED PAVERS W/ GRASS
- PROPOSED "PERMACON" CASSARA PAVERS "RANGE SHADED GREY" COLOUR
- "PERMACON" CASSARA "PLANK PAVERS" "ROCKLAND BLACK" COLOUR
- EXISTING PAVERS TO REMAIN
- PROPOSED ROOF GROUND COVER Vinca minor, Periwinkle
- PROPOSED SOD
- PROPOSED VINE
- PROPOSED 1.8m Ht. "OMEGA 10" FENCE
- "MAGLIN" 400 SERIES BACKLESS CLUSTER c/w "IPE" WOOD SEATING AND TABLE WITH PRECAST CONCRETE EDGING
- "MAGLIN" FRT-1700-BH-R-30 SERIES STOOL AND TABLE LASER DESIGN
- "MAGLIN" 1050B BACKLESS BENCH c/w "IPE" SEATING
- PRECAST CONCRETE PLANTER "PERMACON" "CITY WALL" "ROCKLAND BLACK" c/w COPING MODULES IN "STERLING GREY" 1300x1300x750mm Ht.

5	ISSUED FOR SITE PLAN CONTROL	15/02/2019	LC	JL
4	ISSUED FOR UDRP SUBMISSION	29/11/2018	LC	JL
3	ISSUED FOR ZONING BY-LAW AMENDMENT / SITE PLAN CONTROL	20/08/2018	LC	JL
2	ISSUED FOR SITE PLAN APPROVAL	15/10/2013	VP	JL
1	ISSUED FOR COORDINATION	10/10/2013	VP	JL
No.	Issue	Date	DR	CK

JAMES B. LENNOX & ASSOCIATES INC.
LANDSCAPE ARCHITECTS
3332 CARLING AVE. OTTAWA, ONTARIO K2H 5A8
Tel: (613) 722-5168 Fax: (866) 343-3942

PROJECT

383 ALBERT STREET AND 340 QUEEN STREET

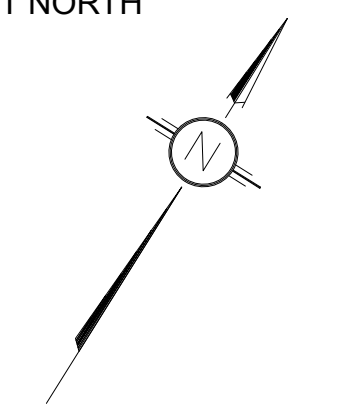
DRAWING

LANDSCAPE PLAN

STAMP



PROJECT NORTH



SCALE

See Plan

START DATE

September 2013

PROJECT NO.

13-CLG-1370

DRAWING NO.

L.1

PLOT SIZE ARCH-E