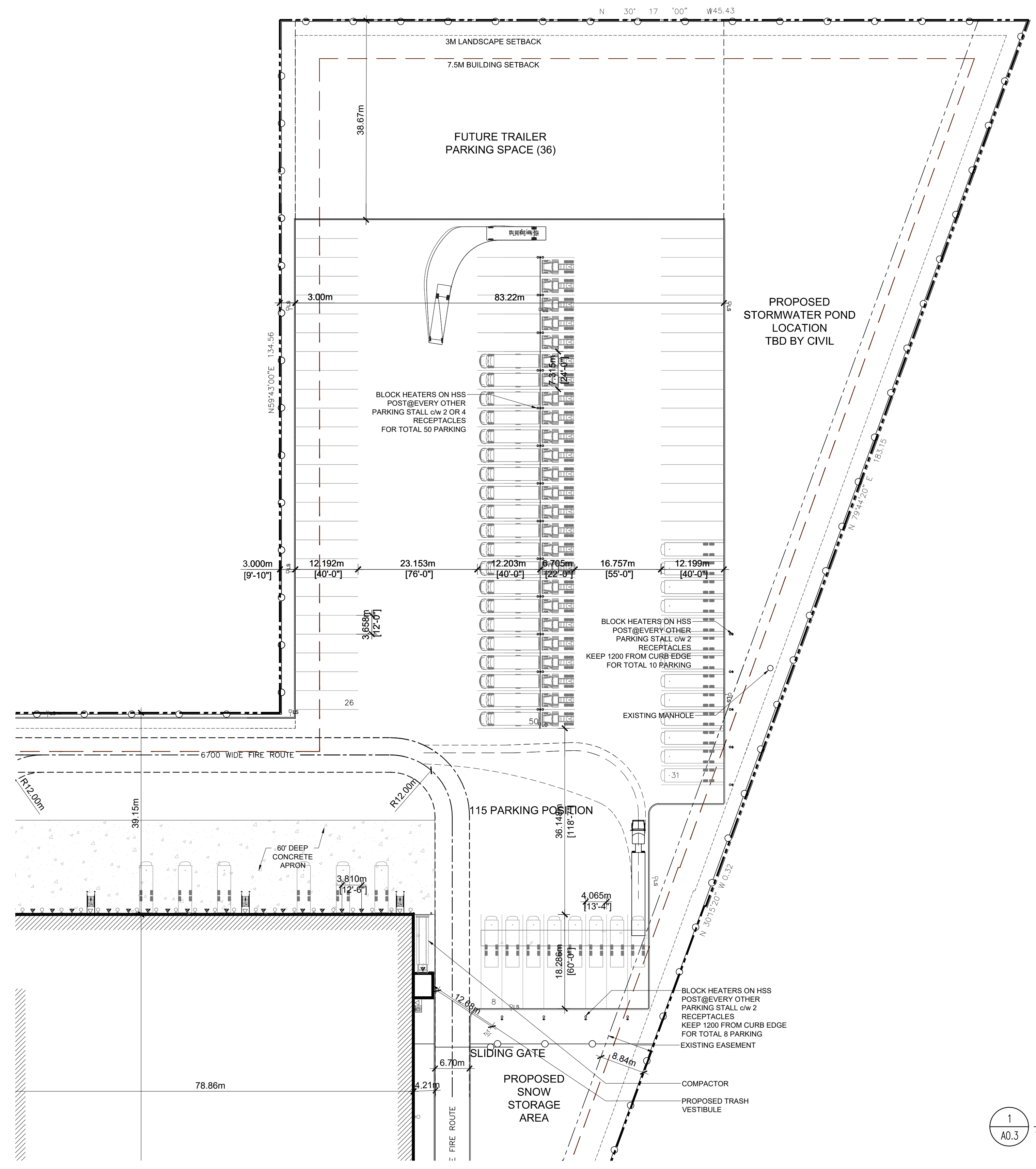
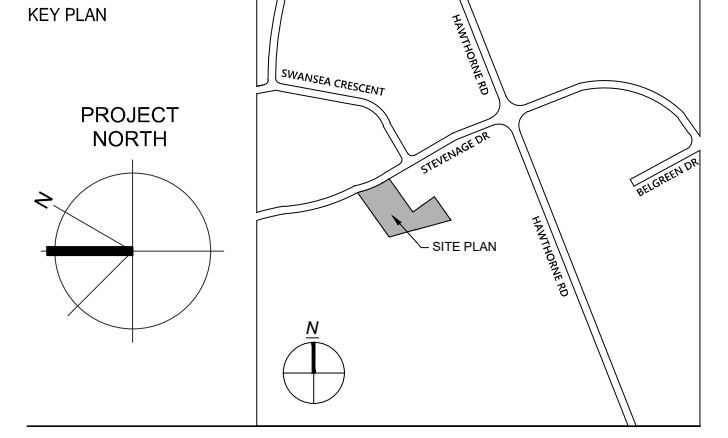


REV	DATE	DESCRIPTION
01	AUG 30, 2018	ISSUED FOR REVIEW
02	SEPT 11, 2018	ISSUED FOR SITE PLAN APPROVAL
03	JAN 15, 2019	RE-ISSUED FOR SITE PLAN APPROVAL

LEGEND		
+ 00.00	EXISTING SPOT ELEVATION	NEW LIGHT POLE
+ 00.00	NEW SPOT ELEVATION	NEW WALL MOUNTED LIGHT
(Tree symbol)	EXISTING TREE	HEAVY DUTY ASPHALT
(Y symbol)	SIAMESE CONNECTION (WALL MOUNTED)	LIGHT DUTY ASPHALT
(Hatched box)	PAINTED LINES TYP.	EXIT/ACCESS DOOR
(HC symbol)	BARRIER FREE RAMP C/W CURB DEPRESSION IN COMPLIANCE WITH OSG 3.8.3.2 REFER TO SITE DETAIL	SECURE EXIT/ACCESS DOOR
(Dashed line)	PROPERTY LINE	OH DOOR AT LOADING DOCKS
(Red dashed line)	REQUIRED ROAD WIDENING SETBACK	ENTRANCE SIGNAGE
(X-X-X-X)	EXISTING CHAIN LINK FENCE	FC FLUSH CURB
(Dotted line)	NEW CHAIN LINK FENCE	TW TOP OF RETAINING WALL
		TC TOP OF CURB
		BC BOTTOM OF CURB
		CBM CHAIN LINK FENCE
		GM GAS METER
		EX. MH EXISTING MANHOLE
		EX. HYD EXISTING CITY HYDRANT
		EX. LS EXISTING LIGHT STANDARD
		EX. CB EXISTING CATCH BASIN
		MH MANHOLE
		HYD CITY HYDRANT
		CB CATCH BASIN
		DCB DOUBLE CATCH BASIN
		HC HANDICAP PARKING SIGN
		CP CONCRETE PAVING
		PC PARKING COUNT
		PE PRINCIPAL ENTRANCE



PROPERTY BOUNDARY INFORMATION WAS DERIVED FROM SURVEY OF:
 PART OF LOTS 3 AND 4
 CONCESSION 5 (RIDEAU FRONT)
 GEOGRAPHIC TOWNSHIP OF GLOUCESTER, CITY OF OTTAWA
 SURVEYED BY ANNIS, O'SULLIVAN, VOLLEBEK LTD.
 SURVEY COMPLETED ON AUGUST 22, 2018



Glenn Piotrowski Architect
 ONTARIO ASSOCIATION OF ARCHITECTS
 GLENN PIOTROWSKI ARCHITECT LTD.
 167 NAVY STREET
 OAKVILLE, ON L6J 2Z6
 905.338.8855

CLIENT
BBS
 BUILDING A REPUTATION ON EXCELLENCE
 BBS CONSTRUCTION (ONTARIO) LTD.
 1805 WOODWARD DRIVE
 OTTAWA, ON K2C 0P9 CANADA
 TEL: 613-226-8830 FAX: 613-226-7709

PROJECT
SYSCO TANNIS
 FACILITY EXPANSION & SITE PLAN MODIFICATIONS

2390 STEVENAGE DRIVE, OTTAWA, ON K1G 3W3

SHEET TITLE
PARTIAL SITE PLAN

DRAWN BY PY

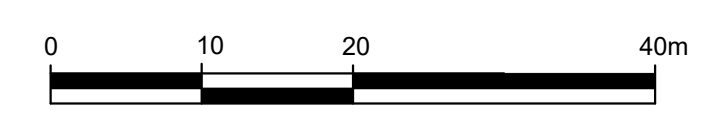
DATE

SCALE 1:500

PROJECT NO.

SHEET NO.

1 PARTIAL SITE PLAN
 A0.3 1:500



A0.3

D07-12-18-0135 #17811