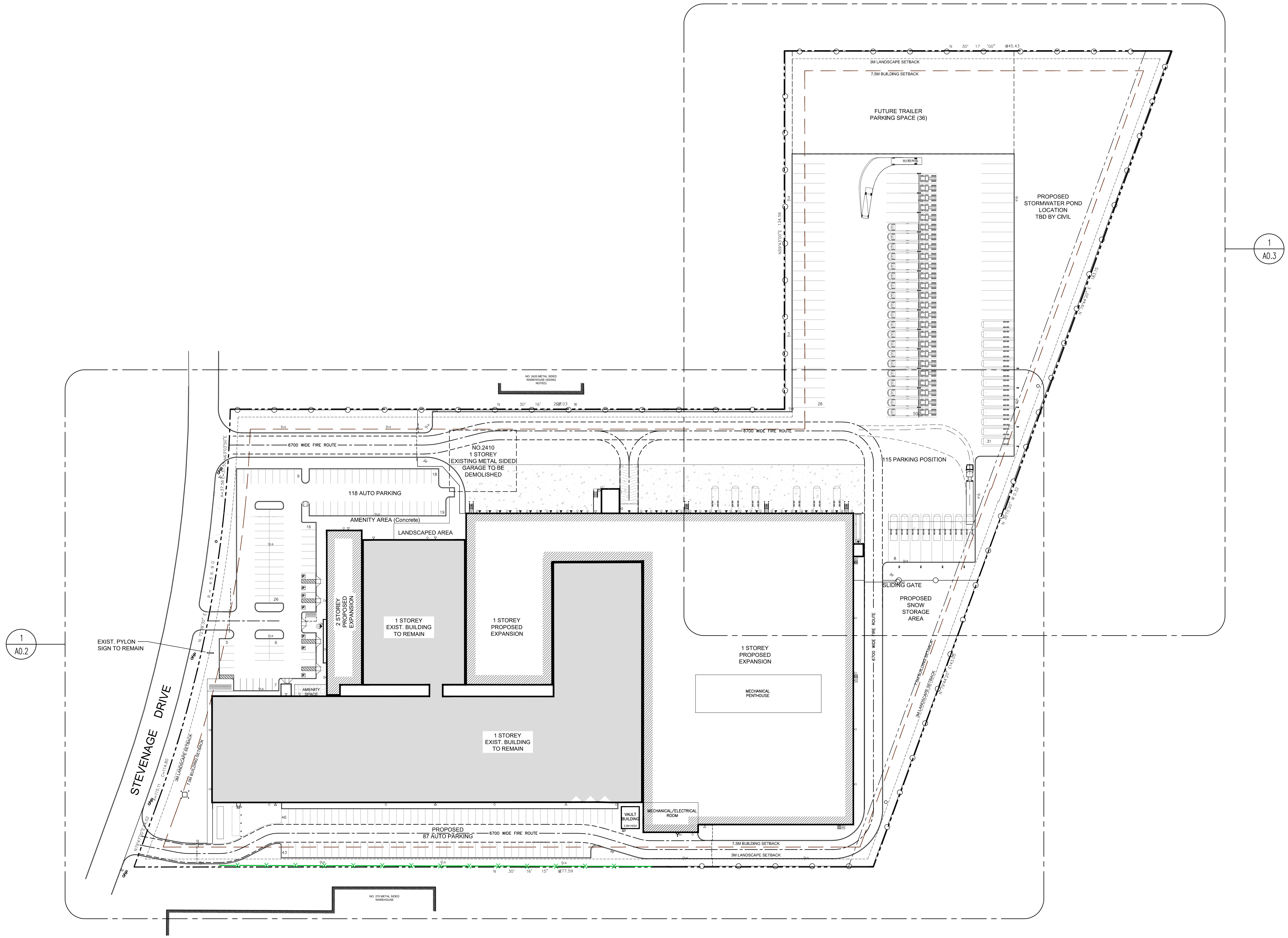


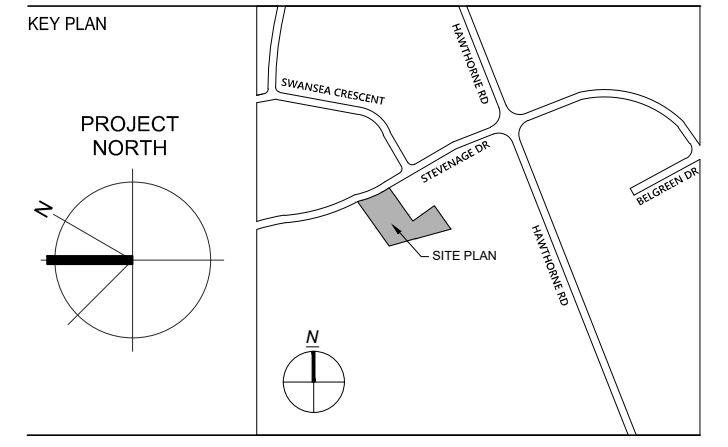
REV	DATE	DESCRIPTION
01	AUG 30, 2018	ISSUED FOR REVIEW
02	SEPT 11, 2018	ISSUED FOR SITE PLAN APPROVAL
03	JAN 15, 2019	RE-ISSUED FOR SITE PLAN APPROVAL



1
A0.3

1
A0.2

PROPERTY BOUNDARY INFORMATION WAS DERIVED FROM SURVEY OF:
PART OF LOTS 3 AND 4
CONCESSION 5 (RIDEAU FRONT)
GEOGRAPHIC TOWNSHIP OF GLOUCESTER, CITY OF OTTAWA
SURVEYED BY ANNIS, O'SULLIVAN, VOLLEBEKK LTD.
SURVEY COMPLETED ON AUGUST 22, 2018



Glenn Piotrowski Architect
ONTARIO ASSOCIATION OF ARCHITECTS
GLENN PIOTROWSKI ARCHITECT LTD.
167 NAVY STREET
OAKVILLE, ON
L6J 2Z6
905.338.8855

CLIENT
BBS
BUILDING A REPUTATION ON EXCELLENCE
BBS CONSTRUCTION (ONTARIO) LTD.
1805 WOODWARD DRIVE
OTTAWA, ON K2C 0P9 CANADA
TEL: 613-226-8830 FAX: 613-226-7709

PROJECT
SYSCO TANNIS
FACILITY EXPANSION & SITE PLAN MODIFICATIONS
2390 STEVENAGE DRIVE, OTTAWA, ON K1G 3W3

SHEET TITLE
OVERALL SITE PLAN

1
A0.1
1:750
OVERALL SITE PLAN



DRAWN BY _____ PY
DATE _____
SCALE 1:750
PROJECT NO. _____
SHEET NO. _____

A0.1
#17811

D07-12-18-0135