



## Smith + Andersen

1600 Carling Ave Suite 530 Ottawa Ontario K1Z 1G3

613 230 1186 f 613 230 2598 [smithandandersen.com](http://smithandandersen.com)

2018-12-18

### Fotenn

223 McLeod St.

Ottawa, Ontario

K2P 0Z8

**Attention: Nico Church**

**RE: SITE PLAN CONTROL  
788 March Road, Kanata  
S+A PROJECT # 18664.000**

Dear Mr. Church:

The following is our response to the comments made by the City of Ottawa with respect to Site Plan Control Approval, first round comments.

### ***Item 2.B37***

*Provide correspondence from the Mechanical Engineer that the roof drains and area drains will be designed to capture up to the 100-year storm event, as stated in the Functional Serving and Stormwater Management Report.*

**Roof drains, area drains, and parking garage trench drain shall be designed as uncontrolled flow to capture a 100 year storm event flow rates as per DSEL Stormwater Management Plan SWM-1. Flow rates per drain, and drain sizing will be developed for the City Permit submission.**

Yours truly,

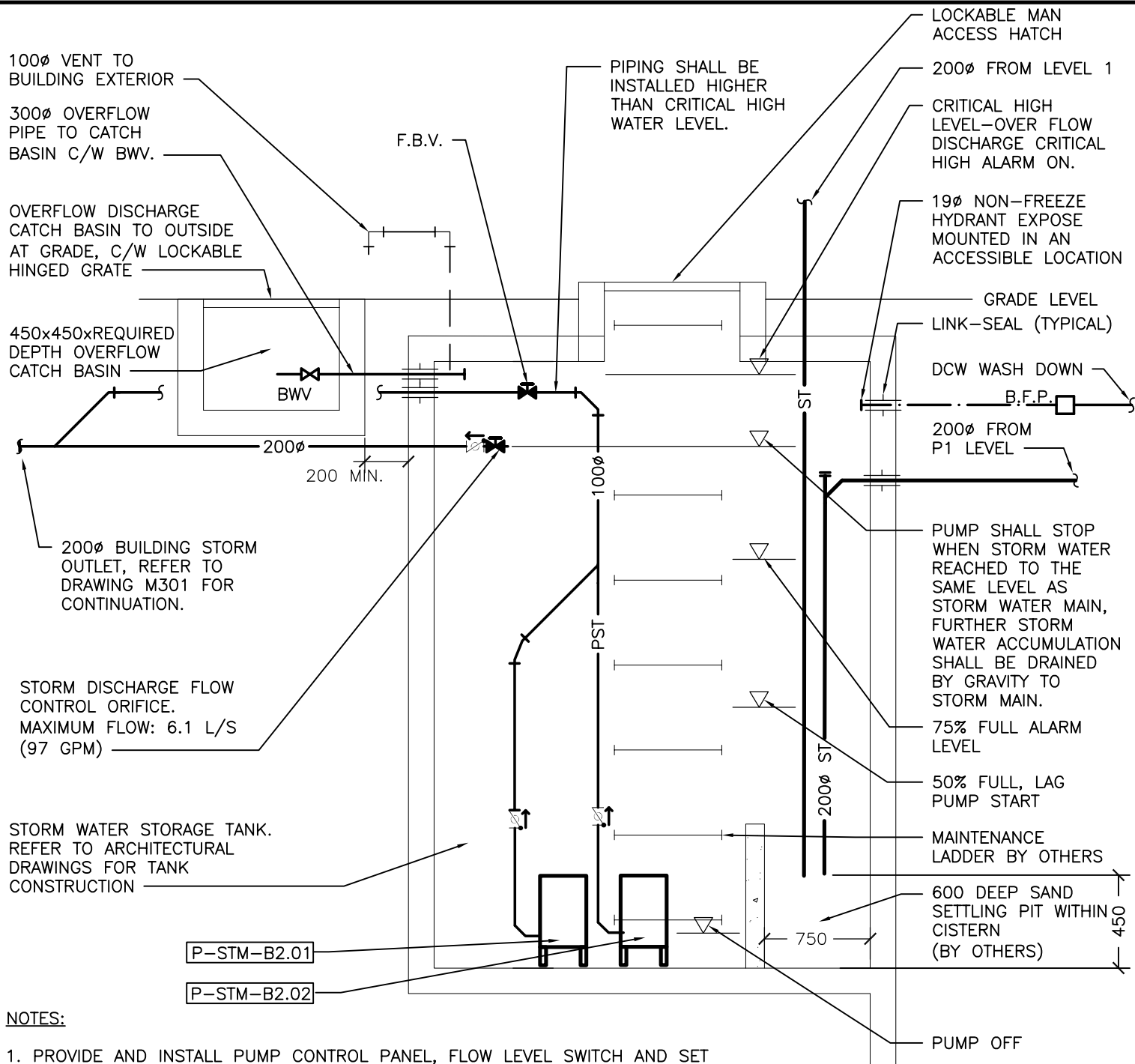
SMITH + ANDERSEN

Adrianne Mitani, P.Eng.

Project Manager – Mechanical

18664.000.m001 Letter for plan examiner 2018-12-18.doc

C.C. Mike Leong – Smith + Andersen  
Barbara Len – Smith + Andersen



**NOTES:**

1. PROVIDE AND INSTALL PUMP CONTROL PANEL, FLOW LEVEL SWITCH AND SET ALARM LEVELS AS INDICATED.
2. SET OFF SWITCH TO ALLOW PUMP SUCTION TO REMAIN UNDER WATER AT ALL TIMES OR PUMP MAY BECOME AIR-LOCKED.
3. SET ON SWITCH TO ALLOW PUMP TO OPERATE A MINIMUM OF 2 MINUTES PER CYCLE.
4. PUMP MAXIMUM DISCHARGE RATE TO STORM MAIN SHALL BE RESTRICTED BY FLOW CONTROL DEVICE AND NOT EXCEED LIMIT DEFINED BY CIVIL ENGINEERING.
5. BUILDING BAS SHALL MONITOR PUMP OPERATION AND ALL ALARM LEVELS. REFER TO SEQUENCE OF OPERATION OF BAS SYSTEM FOR DETAIL.



**Smith + Andersen**

1600 Carling Avenue, Suite 530 Ottawa Ontario K1Z 1G3  
613 230 1186 f 613 230 2598 smithandandersen.com

PROJECT NAME:  
**788 MARCH ROAD**

DRAWING TITLE:  
**CISTERN TANK CONNECTION DETAIL**

DATE:  
**2018-12-11**

PROJECT NO:  
**18664.000**

SCALE:  
**N.T.S.**

PART OF DWG: --  
REVISION No.: --

ISSUED FOR:  
**SITE PLAN  
APPROVAL**

DRAWING NO:  
**MSK-01**