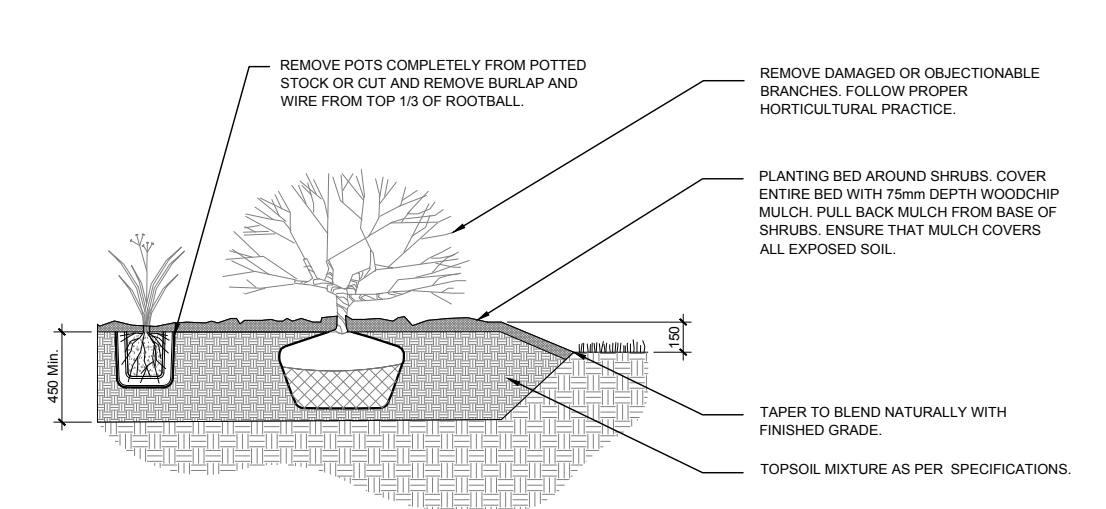
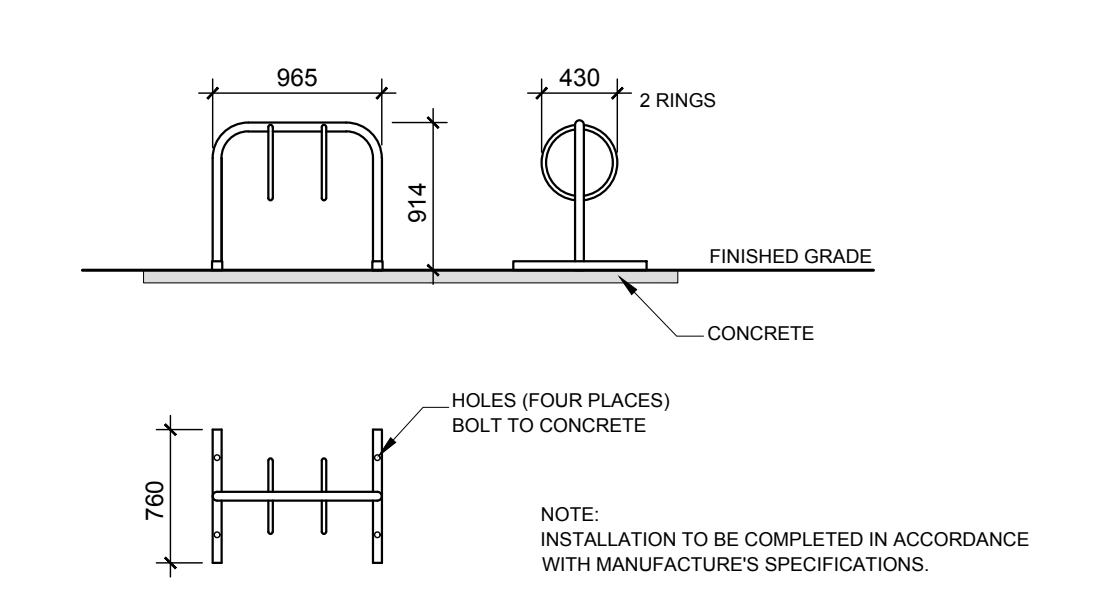


1 LANDSCAPE PLAN
L.1 1:750



2 SHRUB / ORNAMENTAL GRASS PLANTING
L.1 SCALE: NTS



3 TWO (2) RING BIKE RACK ON CONCRETE SURFACE
L.1 SCALE: NTS

| PROPOSED PLANT LIST | | | | | | |
|--|------|---|-------------------------|------------|-----------|------------------|
| KEY | QTY. | BOTANICAL NAME | COMMON NAME | SIZE | CONDITION | PLANTING DENSITY |
| SHRUBS | | | | | | |
| AW | 28 | <i>Spiraea bumalda</i> 'Anthony Watereri' | Anthony Waterer Spirea | 600mm Ht. | Potted | 1500 mm o.c |
| BD | 24 | <i>Juniperus horizontalis</i> 'Compact Andorra' | Compact Andorra Juniper | 600mm spr. | Potted | 1000 mm o.c |
| BR | 6 | <i>Physocarpus</i> 'Diablo' | Diablo Ninebark | 800mm Ht. | Potted | 1500 mm o.c |
| FS | 38 | <i>Rhus aromatica</i> | Fragrant Sumac | 600mm ht. | Potted | 1000 mm o.c |
| PM | 8 | <i>Pinus mugo</i> 'Pumilio' | Dwarf Mugo Pine | 600mm ht. | Potted | 1000 mm o.c. |
| PO | 18 | <i>Potentilla fruticosa</i> 'Goldfinger' | Goldfinger Cinquefoil | 600mm Ht. | Potted | 800 mm o.c |
| RR | 36 | <i>Rosa rugosa</i> | Rugosa Rose | 800mm ht. | Potted | 1000 mm o.c. |
| SJ | 20 | <i>Hypericum kalmianum</i> | St. John's Wort | 600mm ht. | Potted | 1000mm o.c. |
| SS | 16 | <i>Sorbaria sorbifolia</i> | False Spirea | 600mm ht. | Potted | 1200mm o.c. |
| PERENNIALS / ORNAMENTAL GRASSES | | | | | | |
| DL | 28 | <i>Hemerocallis</i> 'Stella D'Oro' | Stella D'Oro Daylily | 150mm pot | Potted | 400 mm o.c |
| KF | 32 | <i>Calamagrostis</i> 'Karl Foerster' | Karl Foerster Grass | 250mm pot | Potted | 800 mm o.c. |

| EXISTING TREE LIST | | | | | | |
|--------------------|------|-------------------------------------|-----------------|-----------|-----------|--|
| KEY | QTY. | BOTANICAL NAME | COMMON NAME | SIZE | CONDITION | |
| TREES | | | | | | |
| AM | 3 | <i>Acer x freemanii</i> 'Armstrong' | Armstrong Maple | 100mm DBH | TBD | |
| GT | 2 | <i>Gleditsia triacanthos</i> | Honey Locust | 100mm DBH | TBD | |

CLIENT:
Contrex Corporation
100 - 223 Colomade Road
Ottawa, ON K2E 7K3

CONSULTANTS
ARCHITECT:
MCROBIE
ARCHITECTS + INTERIOR DESIGNERS

- LEGEND
- EXISTING TREE TO REMAIN
 - GROUP OF EXISTING SHRUBS TO REMAIN
 - EXISTING TREE TO BE REMOVED
 - PROPOSED SHRUBS / ORNAMENTAL GRASSES/ PERENNIALS
 - PROPOSED SOD
 - PROPOSED CONCRETE
 - PROPOSED BARK MULCH

- GENERAL NOTES**
- It is the responsibility of the appropriate contractor or official to report any errors, omissions or discrepancies on this plan with actual site conditions to the Landscape Architect before proceeding with construction.
 - The contractor is to notify all utility companies and authorities prior to any excavation and ascertain locations of underground services.
 - The contractor is to reinstaete all areas and items damaged as a result of construction activity.
 - The contractor is to comply with all pertinent codes and by-laws.
 - The contractor is to maintain a positive surface run-off throughout the entire construction period.
 - The Landscape Architect is not responsible for subsurface conditions.
 - The contractor is to identify all existing trees to remain on site with the Landscape Architect prior to construction.
 - The contractor is to stake the proposed location of all plant material in conjunction with the Landscape Architect prior to excavation.

| | | |
|------|----------------------------------|------------|
| 1 | ISSUED FOR SITE PLAN APPLICATION | 12/17/2018 |
| NO. | ISSUE & REVISIONS | DATE |
| SEAL | PROJECT NORTH | |
| | | |

JAMES B. LENNOX & ASSOCIATES INC.
LANDSCAPE ARCHITECTS
332 CARLING AVE. OTTAWA, ONTARIO K2H 5A8
Tel. (613) 722-5168 Fax. (1866) 343-3942

HAWTHORNE COMMERCIAL CENTRE BUILDINGS 100 AND 550
3020 HAWTHORNE ROAD, OTTAWA

DRAWING
LANDSCAPE PLAN

Do not scale. Refer any dimensional errors and/or possible trade interference/conflict to the architects for clarification prior to commencement of the work. The conditions of the contract apply.

| | |
|---------------|-----------------|
| SCALE - 1:750 | DRAWING NO. L.1 |
| DRAWN - ML | |
| CHECKED - JL | |
| PLOT DATE - | REVISION NO. 1 |