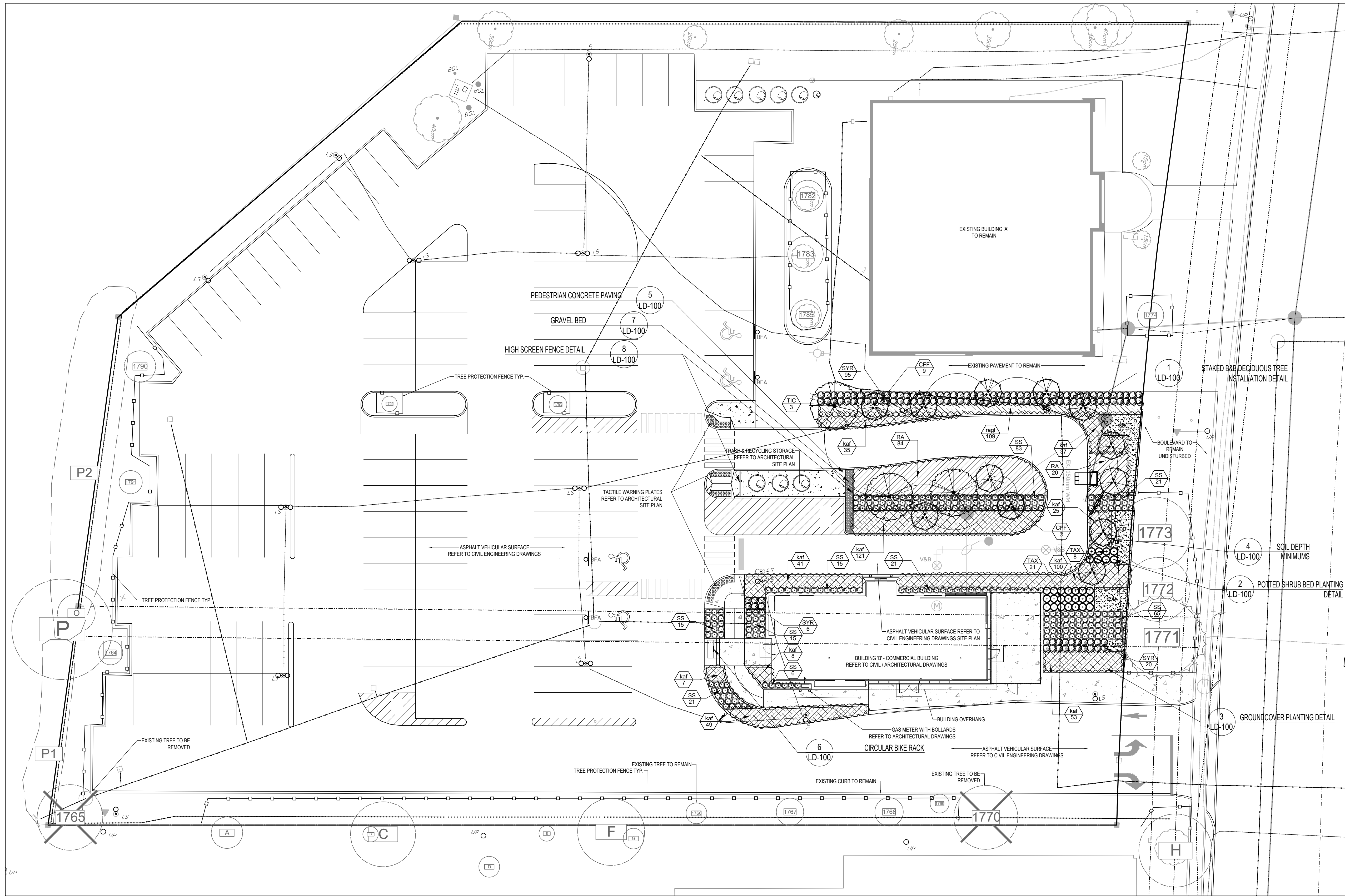

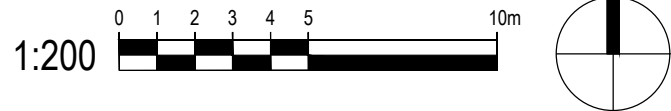


December 21, 2018 15:15 AM \\TERRASRV\COMPANY\01-PROJECTS\2018\18-182 1910 BANK STREET\01-CADD\CURRENT\LOT02-SPA\18-182\_LP-100\_LANDSCAPE PLANNING



PLANT SCHEDULE

TREES	CODE	QTY	BOTANICAL NAME	COMMON NAME	B&B	CAL.	REMARKS	
	CFF	12	CARPINUS BETULUS 'FRANZ FONTAINE'	FRANZ FONTAINE HORNBEAM	B & B	45MM CAL	DROUGHT TOLERANT	
	TIC	3	TILIA CORDATA	LITTLELEAF LINDEN	B & B	60MM CAL	DROUGHT TOLERANT	
SHRUBS	CODE	QTY	BOTANICAL NAME	COMMON NAME	CONT	HT	REMARKS	
	SYR	122	SYRINGA MEYERI 'PALIBIN'	DWARF KOREAN LILAC	60CM		DROUGHT TOLERANT	
	TAX	29	TAXUS CUSPIDATA 'NANA'	DWARF JAPANESE YEW	60CM		DROUGHT TOLERANT	
GRASSES	CODE	QTY	BOTANICAL NAME	COMMON NAME	CONT	HT	REMARKS	
	SS	265	SCHIZACHYRIUM SCOPARIUM 'THE BLUES'	THE BLUES LITTLE BLUESTEM	2 GAL.		DROUGHT TOLERANT	
SHRUB AREAS	CODE	QTY	BOTANICAL NAME	COMMON NAME	CONT	HT.	SPACING	REMARKS
	kaf	476	CALAMAGROSTIS X ACUTIFLORA 'KARL FOERSTER'	FEATHER REED GRASS	2 GAL.		600mm	DROUGHT TOLERANT
	ragl	109	RHUS AROMATICA 'GRO-LOW'	GRO-LOW FRAGRANT SUMAC	3 GAL.		600mm	NATIVE, DROUGHT TOLERANT
	RA	104	RIBES ALPINUM	ALPINE CURRANT	3 GAL.		900mm	DROUGHT TOLERANT

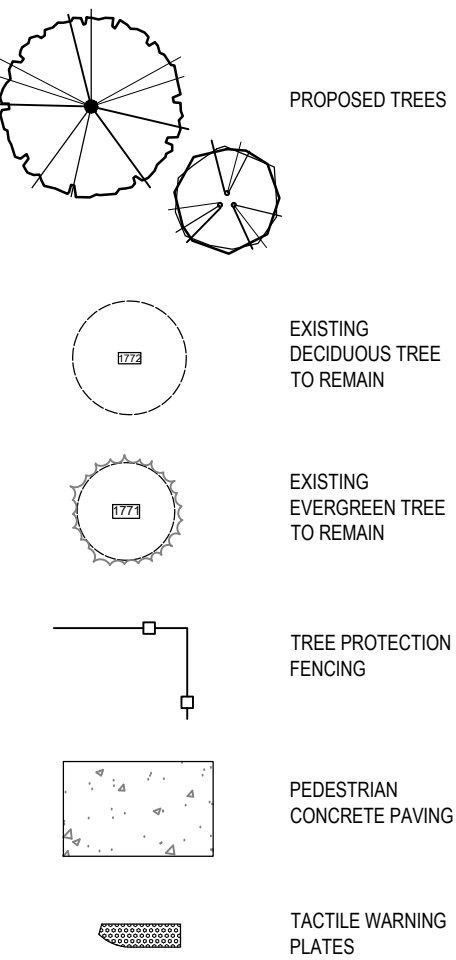


NOTE:  
REFER TO TREE INVENTORY DRAWING LP-101 FOR THE EXISTING  
TREE SPECIES INFORMATION, DIAMETER AND HEALTH CONDITION.

LANDSCAPE PLAN 1 LP-100

NOT FOR CONSTRUCTION

LEGEND



02	Issued for Site Plan Approval Application	2018-12-07	JCP
01	Issued for Site Plan Approval Application	2018-11-23	JCP
no.	revision	date	by

CONTRACTOR MUST VERIFY ALL DIMENSIONS ON THE JOB AND REPORT ANY DISCREPANCY TO THE LANDSCAPE ARCHITECT BEFORE PROCEEDING WITH THE WORK.  
ALL DRAWINGS AND SPECIFICATIONS ARE INSTRUMENTS OF SERVICE AND THE PROPERTY OF THE LANDSCAPE ARCHITECT WHICH MUST BE RETURNED AT THE COMPLETION OF THE WORK.  
ALL DRAWINGS TO BE USED FOR CONSTRUCTION ONLY WHEN SIGNED BY THE LANDSCAPE ARCHITECT.

signed \_\_\_\_\_ date \_\_\_\_\_

**terraplan**  
LANDSCAPE ARCHITECTS  
VISION. DELIVERED.

20 Champlain Blvd. Suite 102 - Toronto ON - M5H 2Z1 info@terraplan.ca www.terraplan.ca

CLIENT

COMMERCIAL PROJECT  
1910 BANK STREET  
OTTAWA, ONTARIO

PROJECT  
LANDSCAPE PLAN

DRAWING  
DRAWN: MC  
CHECKED: DJ  
SCALE: 1:200  
DATE: 2018-11-23  
PROJECT NO.: 18-182



SHEET NO.: LP-100

December 21, 2018 1:57 AM \\TERRASRV\COMPANY01\PROJECTS\2018\18-182 1910 BANK STREET\01-CADD\CURRENT\0102-SPN\8-182\_LP-100\_LANDSCAPE PLANNING

Table 1. Tree Inventory

Location: 1910 Bank Street, Ottawa

Date: 1 October 2018

Surveyors: SA

Tree #	Common Name	Scientific Name	DBH	TI	CS	CV	CDB	DL	CRZ	Comments	Action
1764	Freeman Maple	<i>Acer x freemanii</i>	11.5	G	F-G	G		3	1.15	Asymmetrical crown (M), competing trees (L), lean (VL), <b>remove T-bars</b>	Retain
1765	Manitoba Maple	<i>Acer negundo</i>	29, 31.5	P	P-F	F-G	10	6	3.15	Co-dominant at base, lean (M), bowed (L), deadwood (L), stems split (H), <b>removal recommended</b>	Remove (condition)
1766	Freeman Maple	<i>Acer x freemanii</i>	10	G	G	G		2	1.00	Stem wounds at base (VL), <b>remove t-bars</b>	Retain
1767	Freeman Maple	<i>Acer x freemanii</i>	13	F	G	G		3	1.30	Girdling root, stem wounds (L), suckering (L), <b>remove t-bars</b>	Retain
1768	Freeman Maple	<i>Acer x freemanii</i>	13.5	F-G	G	G		2.5	1.35	Stem wounds at base (L), suckering (VL), <b>remove t-bars</b>	Retain
1769	Freeman Maple	<i>Acer x freemanii</i>	9	F-G	G	G		2	0.90	Suckering (L), <b>removal t-bars</b>	Retain
1770	Apple species	<i>Malus spp.</i>	16.5, 30.5	F-G	F-G	F-G		4	3.05	Co-dominant at 1.3m and 1.8m, epicormic branching (M), deadwood (L), v-unions, deadwood (L), bowed (L), <b>removal recommended</b>	Remove (condition)
1771	Austrian Pine	<i>Pinus nigra</i>	37	F	F-G	F-G		5	3.70	Stem wound at base, sealing (M), lean (L), bowed (L), pruning wounds (L), deadwood (L), asymmetrical crown (L), exposed roots (L)	Retain
1772	Norway Maple	<i>Acer platanoides</i>	30.5	F-G	F-G	F-G		6	3.05	Co-dominant at 1.9m, exposed rotos (L), asymmetrical crown (L), pruning wounds (L), deadwood (L)	Retain
1773	Norway Maple	<i>Acer platanoides</i>	34.5	F	F-G	G		6.5	3.45	Girdling root, bowed (L), pruning wounds (M), seam, deadwood (L), exposed roots (VL), asymmetrical crown (L)	Retain
1774	Norway Maple	<i>Acer platanoides</i>	12.5	F-G	G	G		3	1.25	Stem wound (L), sealing, co-dominant at 1.6m, <b>remove t-bars</b>	Retain
1775	Honey Locust (shademaster)	<i>Gleditsia triacanthos inermis</i>	10.5	F-G	F-G	F-G		3.5	1.05	Suckering (M), deadwood (L), bowed (L), <b>prune suckers, remove t-bars</b>	Retain
1776	Honey Locust (shademaster)	<i>Gleditsia triacanthos inermis</i>	10.5	F-G	F-G	F-G		3.5	1.05	Lean (L), bowed (L), suckering (M), deadwood (L), <b>prune suckers, remove t-bars</b>	Retain
1777	Norway Maple	<i>Acer platanoides</i>	13.5	G	G	G		3	1.35	Deadwood (VL), <b>remove t-bars</b>	Retain
1778	Littleleaf Linden	<i>Tilia cordata</i>	9.5, 30	F-G	F-G	F-G		4	3.00	Co-dominant at base and 2m, pruning wounds (L), deadwood (L), suckering (L), stem wound at base (L)	Retain
1779	Littleleaf Linden	<i>Tilia cordata</i>	36.5	F-G	F-G	F-G		3.5	3.65	Suckering (M), lean (L), sweep (L), pruning wounds (L)	Retain
1780	Littleleaf Linden	<i>Tilia cordata</i>	~10-15, avg 13	P-F	F	F-G		4	1.50	Co-dominant at base, fence inclusion, root rot, lean (M), 8 stems, deadwood (L)	Retain
1781	Littleleaf Linden	<i>Tilia cordata</i>	~12-17, avg 15	P-F	P-F	F	30	3	1.70	Co-dominant at base and 1.2m, lean (M), sweep (L), stem wounds (M), deadwood (M), some dead leaders, <b>removal recommended</b>	Remove (condition)
1782	Honey Locust (shademaster)	<i>Gleditsia triacanthos inermis</i>	15	G	G	G		2.5	1.50		Retain
1783	Honey Locust (shademaster)	<i>Gleditsia triacanthos inermis</i>	17	G	G	G		4	1.70		Retain
1784	Honey Locust (shademaster)	<i>Gleditsia triacanthos inermis</i>	14.5	G	G	G		3	1.45		Retain
1785	Littleleaf Linden	<i>Tilia cordata</i>	~11, 11, 13, 15	P-F	F	F-G		2.5	1.50	Co-dominant at base, suckering (H), ~4 stems, pruning wounds (L), deadwood (L), <b>prune suckers</b>	Retain
1786	Littleleaf Linden	<i>Tilia cordata</i>	~13, 16, 20, 20	F	F-G	F-G		4	2.00	Co-dominant at base, suckering (H), lean (L), pruning wounds (L), deadwood (VL), <b>prune suckers</b>	Retain
1787	Littleleaf Linden	<i>Tilia cordata</i>	28	F-G	F-G	F-G		4	2.80	Co-dominant at 1.8m, suckering, lean (L), pruning wounds (L), deadwood (VL)	Retain
1788	Littleleaf Linden	<i>Tilia cordata</i>	~40	P	F-G	G		4	4.00	Co-dominant at 1.6m with split, suckering (H), stem wound, <b>monitor and remove if necessary</b>	Retain
1789	Siberian Elm	<i>Ulmus pumila</i>	~6-8 avg 7	P-F	F	F-G		3	0.80	~7 stems, co-dominant at base, pruning wounds (L), crooked stems (H), asymmetrical crown (L)	Retain
1790	Freeman Maple	<i>Acer x freemanii</i>	15	F	G	G		2.5	1.50	Stem wound (H), sealing	Retain
1791	Freeman Maple	<i>Acer x freemanii</i>	11	G	G	G		2.5	1.10	Vine competition (VL), <b>remove t-bars</b>	Retain
1792	Honey Locust (shademaster)	<i>Gleditsia triacanthos inermis</i>	~7	F-G	F-G	G		2.5	0.70	Suckering (H), root restriction (M), asymmetrical crown (L), <b>prune suckering</b>	Retain
1793	Honey Locust (shademaster)	<i>Gleditsia triacanthos inermis</i>	8.5	F-G	F-G	F-G		2.5	0.85	Suckering (L), root restriction (M), deadwood (VL), <b>remove t-bars</b>	Retain
A	Manitoba Maple	<i>Acer negundo</i>	~4, 5, 11, 14, 15	F	F	F-G		3	1.50	Co-dominant at base, epicormic branching (M), lean (M), bowed (L), deadwood (L), limb with fence inclusion (L), stem wounds (L)	Retain
B	Norway Maple	<i>Acer platanoides</i>	~5	F	F	G		2.5	0.50	Crooked stem (M), suckering (L), asymmetrical crown (L), competing with Tree L (H).	Retain
C	Manitoba Maple	<i>Acer negundo</i>	~20, 31	F	F	F	10	5	3.10	Co-dominant at base, fence inclusion (L), crooked stems (L), deadwood (L), epicormic branching (VL), pruning wounds (L), bowed (M)	Retain
D	Amur Maple	<i>Acer ginnala</i>	~5, 8, 9, 9, 10	F-G	F-G	G		4	1.00	Co-dominant at base, epicormic branching (L), bowed (L), asymmetrical crown (L)	Retain
E	Manitoba Maple	<i>Acer negundo</i>	~4, 4, 3, 5, 5, 6	P-F	F	G		3	0.60	Co-dominant at base, lean (L), bowed (L), pruning wounds (H), epicormic branching (M)	Retain
F	Manitoba Maple	<i>Acer negundo</i>	~21, 32	P-F	P-F	F	30	5	3.20	Co-dominant at base, stem wounds (L), lean (M), deadwood (M), bowed (L), asymmetrical crown (L), epicormic branching (L)	Retain
G	Mountain Ash	<i>Sorbus spp.</i>	~2, 3, 4, 5, 10	F	F	F	30	3	1.00	Co-dominant at base, deadwood (M), lean (L), bowed (M), stem wounds (L), fungal bodies on stem	Retain
H	Honey Locust (shademaster)	<i>Gleditsia triacanthos inermis</i>	~35	G	G	G		6	3.50	Co-dominant at 1.4m and 3m, pruning wounds (L), deadwood (VL)	Retain
I	White Elm	<i>Ulmus americana</i>	~3, 3, 5, 5	F	F	F		2.5	0.50	On property line, co-dominant at base, deadwood (L), losing vigour	Retain

Kuntz Forestry Consulting Inc.

P1960

4

Terraplan Landscape Architects

Tree Inventory and Preservation Plan, 1910 Bank Street, Ottawa, Ontario

2 October 2018

J	Siberian Elm	<i>Ulmus pumila</i>	~3-11, avg 6	P-F	F	F-G		3	1.10	~8 stems, co-dominant at base, fence inclusion, lean (L), deadwood (L), epicormic branching (L)	Retain
K	Siberian Elm	<i>Ulmus pumila</i>	~3-6 avg 5	F	F	G		2	0.60	Co-dominant at base, ~6 stems, deadwood (L)	Retain
L	Willow species	<i>Salix spp.</i>	~4-12 avg 10	F	F-G	G		~4	1.20	Co-dominant at base, lean (L), bowed (M)	Retain
M	Manitoba Maple	<i>Acer negundo</i>	~5, 7, 7, 9	P-F	F-G	F-G		~4	0.90	Lean (L), co-dominant at base, only coppice growth remaining, pruning wounds (M), fence inclusion	Retain
N	Manitoba Maple	<i>Acer negundo</i>	~3, 5, 6, 18	P	F	F-G		3	1.80	Fence inclusion, cavity (M), vine competition (H), pruning wounds (M), <b>removal recommended</b>	Retain
O	White Elm	<i>Ulmus americana</i>	~18	P	F-G	F-G		4	1.80	Fence inclusion, vine competition (M), bowed (L), deadwood (L), lean (L)	Retain
P	Manitoba Maple	<i>Acer negundo</i>	~48	P	P	P		6	4.80	Stem snapped at 2m, hanging leader, <b>hazard, remove</b>	Retain
P1	See Table 2							<2	1.00		Retain
P2	See Table 2							<2	1.00		Retain

Codes		
DBH	Diameter at Breast Height	(cm)
TI	Trunk Integrity	(G, F, P)
CS	Crown Structure	(G, F, P)
CV	Crown Vigor	(G, F, P)
CDB	Crown Die Back	(%)
DL	Dripline	(metres)
CRZ	Critical Root Zone	(metres)
~ = estimate; (VL) = very light; (L) = light; (M) = moderate; (H) = heavy		

Table 2. 100% Tally of Tree Polygons

Location: 1910 Bank Street  
Date: 01-Oct-18  
Surveyor: SA  
Compartment Number: P1  
Stations Talled: 100% Tally

Stand Analysis Tally (by Species, Size Class and Quality Class)

Tree Size Class >>>>	Regen <10cm		Polewood 10-24 cm		Sawtimber Sizes						Total All Sizes	
					Small 26-36 cm		Medium 38-48 cm		Large 50 cm +			
Species	AGS	UGS	AGS	UGS	AGS	UGS	AGS	UGS	AGS	UGS	AGS	UGS
Poplar species ( <i>Populus sp.</i> )	18										18	0
Willow species ( <i>Salix sp.</i> )	21										21	0
Black Locust ( <i>Robinia pseudoacacia</i> )	1										1	0
Manitoba Maple ( <i>Acer negundo</i> )	12										12	0
											0	0
Total Number of Trees	52	0	0	0	0	0	0	0	0	0	52	0

Additional Notes:

Compartment Number: P2  
Stations Talled: 100% Tally

Stand Analysis Tally (by Species, Size Class and Quality Class)

Tree Size Class >>>>	Regen <10cm		Polewood 10-24 cm		Sawtimber Sizes						Total All Sizes	
					Small 26-36 cm		Medium 38-48 cm		Large 50 cm +			
Species	AGS	UGS	AGS	UGS	AGS	UGS	AGS	UGS	AGS	UGS	AGS	UGS
Willow species ( <i>Salix</i> sp.)	1										1	0
Manitoba Maple ( <i>Acer negundo</i> )	22										22	0
											0	0
Total Number of Trees	23	0	0	0	0	0	0	0	0	0	23	0

Additional Notes:

NOT FOR CONSTRUCTION

02	Issued for Site Plan Approval Application	2018-12-07	JCP
01	Issued for Site Plan Approval Application	2018-11-23	JCP
no.	revision	date	by

CONTRACTOR MUST VERIFY ALL DIMENSIONS ON THE JOB AND REPORT ANY DISCREPANCY TO THE LANDSCAPE ARCHITECT BEFORE PROCEEDING WITH THE WORK.  
ALL DRAWINGS AND SPECIFICATIONS ARE INSTRUMENTS OF SERVICE AND THE PROPERTY OF THE LANDSCAPE ARCHITECT WHICH MUST BE RETURNED AT THE COMPLETION OF THE WORK.  
ALL DRAWINGS TO BE USED FOR CONSTRUCTION ONLY WHEN SIGNED BY THE LANDSCAPE ARCHITECT.

signed \_\_\_\_\_ date \_\_\_\_\_

terraplan

LANDSCAPE ARCHITECTS

VISION. DELIVERED.

20 Champlain Blvd. Suite 102 - Toronto ON - M3H 2Z1 info@terrapian.ca www.terrapian.ca

CLIENT

COMMERCIAL PROJECT  
1910 BANK STREET  
OTTAWA, ONTARIO  
PROJECT  
TREE INVENTORY

DRAWING	
DRAWN:	MC
CHECKED:	DJ
SCALE:	AS SHOWN
DATE:	2018-11-23
PROJECT NO.:	18-182

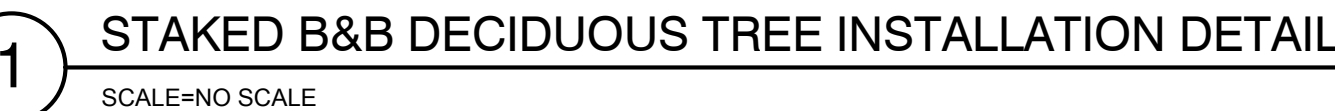


LP-101

SHEET NO.:



02	Issued for Site Plan Approval Application	2018-12-07	JCP
01	Issued for Site Plan Approval Application	2018-11-23	JCP
no.	revision	date	by



## 4 SOIL DEPTH MINIMUMS

