

- LEGEND**
- PROPERTY BOUNDARY
 - - - PHASING LIMIT
 - × 89.15 EX. EXISTING GRADE
 - × 89.70 PROPOSED GRADE
 - × 89.45BC PROPOSED GRADE AT BOTTOM OF CURB
 - × 89.60TC PROPOSED GRADE AT TOP OF CURB
 - ← 2.6% PROPOSED GARDE AND FLOW DIRECTION
 - PROPOSED SANITARY MANHOLE
 - EXISTING SANITARY SEWER MANHOLE
 - EXISTING STORM SEWER MANHOLE
 - 87.5 EXISTING GROUND CONTOUR AND ELEVATION
 - ⊕ PROPOSED WATER VALVE AND BOX
 - ⊕ EXISTING FIRE HYDRANT
 - ⊕ PROPOSED LIGHT STANDARD
 - EXISTING TREE

- GRADING/SURFACE WORK**
- ALL DISTURBED GRASS AREAS SHALL BE RESTORED WITH TOPSOIL AND SOD TO ORIGINAL OR BETTER CONDITION.
 - ALL EXISTING ASPHALT PAVEMENT, CONCRETE SIDEWALK, AND CURB & GUTTER SHALL BE SAW-CUT PRIOR TO REMOVAL.
 - ALL DISTURBED ASPHALT PAVEMENT SHALL BE RESTORED WITH HOT LAID ASPHALT MATCHING THE EXISTING LAYERS AND DEPTHS USING H&B FOR THE BASE IN HEAVY DUTY AND H&3 FOR THE TOP LIFT. THE EXISTING ASPHALT SHALL BE SAW CUT AND REMOVED (FULL DEPTH) A MINIMUM DISTANCE OF 300mm FROM THE FACE OF THE TRENCH. RE-INSTATE AS PER OPSD 509.010 WITH GRANULAR 'A' OR BETTER.

- EROSION & SEDIMENT CONTROL**
- DURING CONSTRUCTION AND UNTIL SUCH TIME AS THE SITE HAS BEEN PAVED AND SODDED, THE CONTRACTOR SHALL PREVENT STORM WATER RUNOFF FROM DIRECTLY ENTERING THE MUNICIPAL STORM SEWER SYSTEM ROW BY INSTALLING AND MAINTAINING SILT CONTROL FACILITIES AT ALL CATCHBASINS AS PER DETAIL 'A' AND BY INSTALLING AND MAINTAINING SILT FENCE AS PER DETAIL 'B' WHERE SHOWN. SILT FENCE TO BE CONSTRUCTED 0.6m INSIDE PROPERTY LINE.

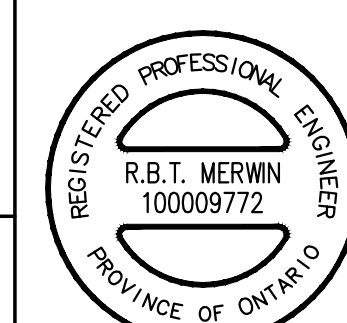
ELEVATION NOTE
ELEVATIONS SHOWN HEREON ARE GEODETIC (CGVD-1928-1978) AND ARE DERIVED FROM THE CAN-NET VRS NETWORK MONUMENT: OTTAWA ELEVATION=95.230.

UTILITY NOTE
LOCATION OF UNDERGROUND SERVICES ARE APPROXIMATE AND ARE PER THE CITY OF OTTAWA UCC SHEET NO. S-M-15-03 AND M-15-04, PLAN AND PROFILE DWG NO. 1725 (SHEET 4 of 6) AND SITE SERVICING PLAN 01 (12320) AND MUST BE VERIFIED PRIOR TO CONSTRUCTION. SITE UNDERGROUND SERVICES LOCATED ON SEPTEMBER 19, 2018 AND MUST BE VERIFIED PRIOR TO CONSTRUCTION.

3			
2			
1	ISSUED FOR SITE PLAN APPROVAL	NOV 23, 2018	R.M.
No.	REVISION	DATE	BY

RIO CAN
RioCan Holdings Inc.
RioCan Yonge Spigon Centre
2300 Yonge Street Suite 500, P.O. Box 2386
Toronto, Ontario M4P 1E4

urbantech west
Urbantech West, A Division of Leighton-Zec West Ltd.
2030 Bristol Circle, Suite 201, Oakville, Ontario L6H 0H2
Tel: 905.829.8818 Fax: 905.829.4004
www.urbantech.com



GRADING PLAN - 1

DESIGNED:	R.M.	CHECKED:	R.M.	PROJECT No.:	18-227W
DRAWN:	R.N.	DATE:	NOVEMBER 2018	DRAWING No.:	
SCALE:	H 1:250 2.5m 0m 2.5m 5m 10m				