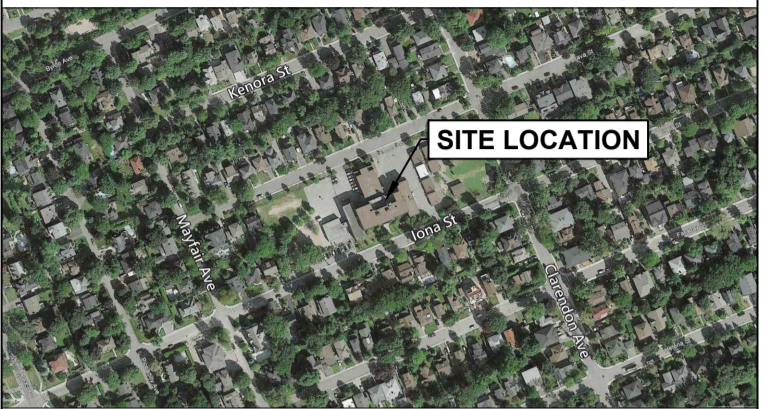


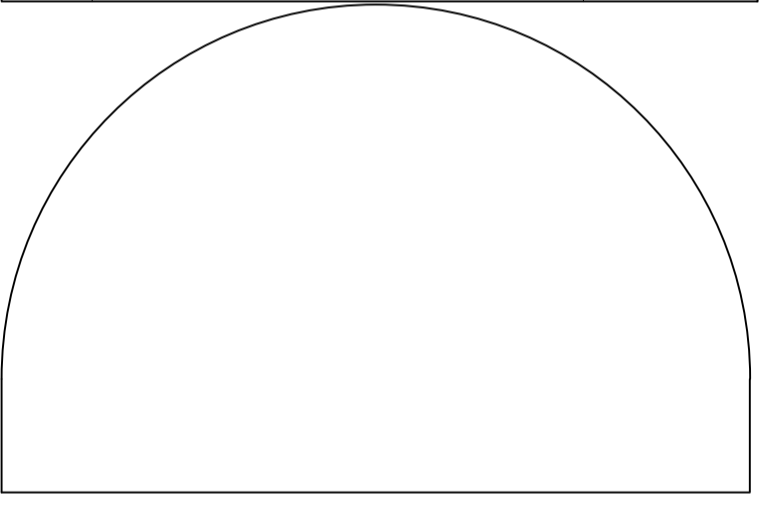
OTTAWA-CARLETON DISTRICT SCHOOL BOARD



SITE LOCATION

**Jp2g Consultants Inc.**  
ENGINEERS • PLANNERS • PROJECT MANAGERS  
1150 MORRISON DRIVE, SUITE 410, OTTAWA, ONT.  
PHONE: (613) 828-7800 FAX: (613) 828-2600  
Ref.: 18-1065A

1	ISSUED FOR SITE PLAN CONTROL	2018-12-17



**EDWARD J. CUHACI & ASSOCIATES ARCHITECTS Inc.**  
171 Slater St, Suite 100, Ottawa, Ontario, K1P 5H7  
Fax: (613) 236-1944 Telephone: (613) 236-7135 E-mail: info@cuhaci.com

project  
**ELMDALE PUBLIC SCHOOL  
ADDITIONAL**

**49 IONA STREET, OTTAWA, ONTARIO**

seal



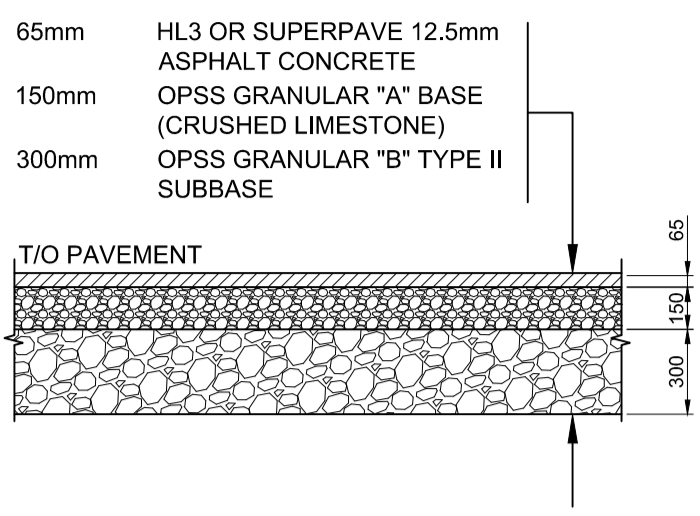
drawing title  
**DETAILS**

scale As shown	drawn by RW
date 30.10.18	checked by SM
project number	drawing number <b>C3</b>

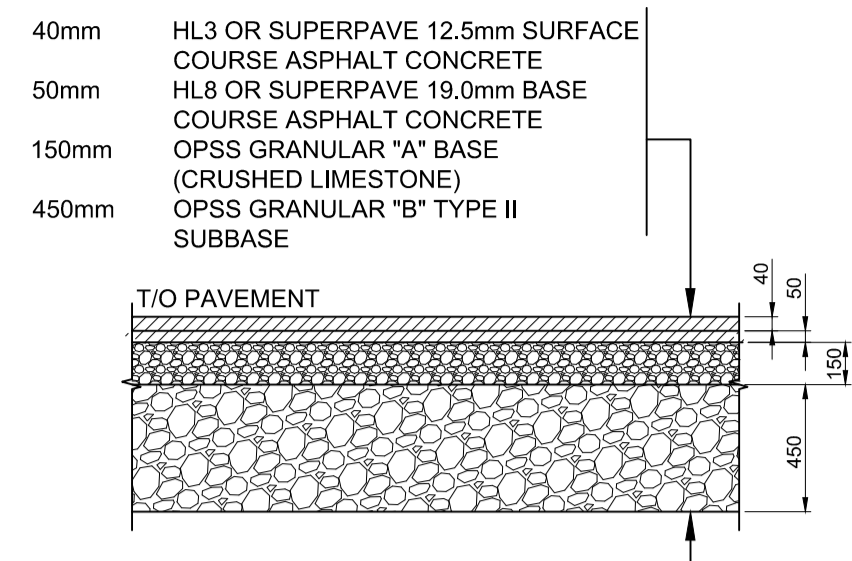
CONTRACTOR TO VERIFY ALL DIMENSIONS AND NOTIFY THE ARCHITECT OF ANY DISCREPANCIES BEFORE WORK COMMENCES. DO NOT SCALE DRAWINGS.

revision

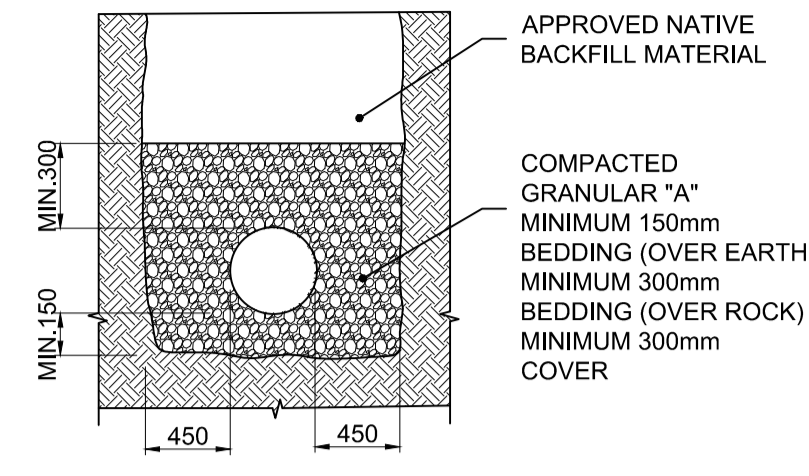
D07-12-18-XXXX



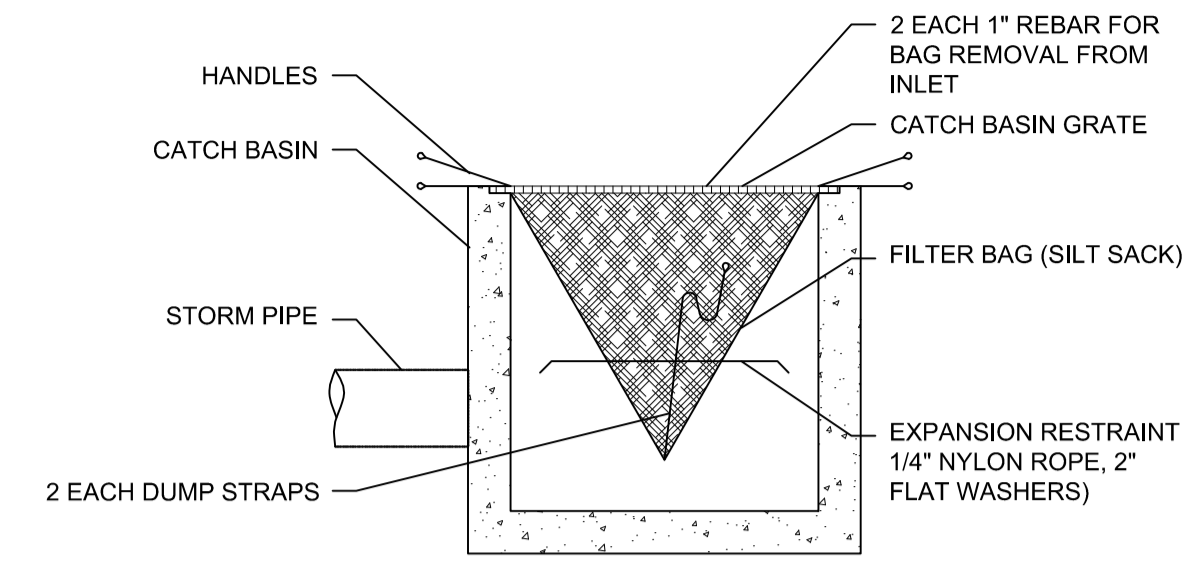
**1**  
**C3** PAVEMENT STRUCTURE FOR LIGHT DUTY TRAFFIC  
SCALE: N.T.S.



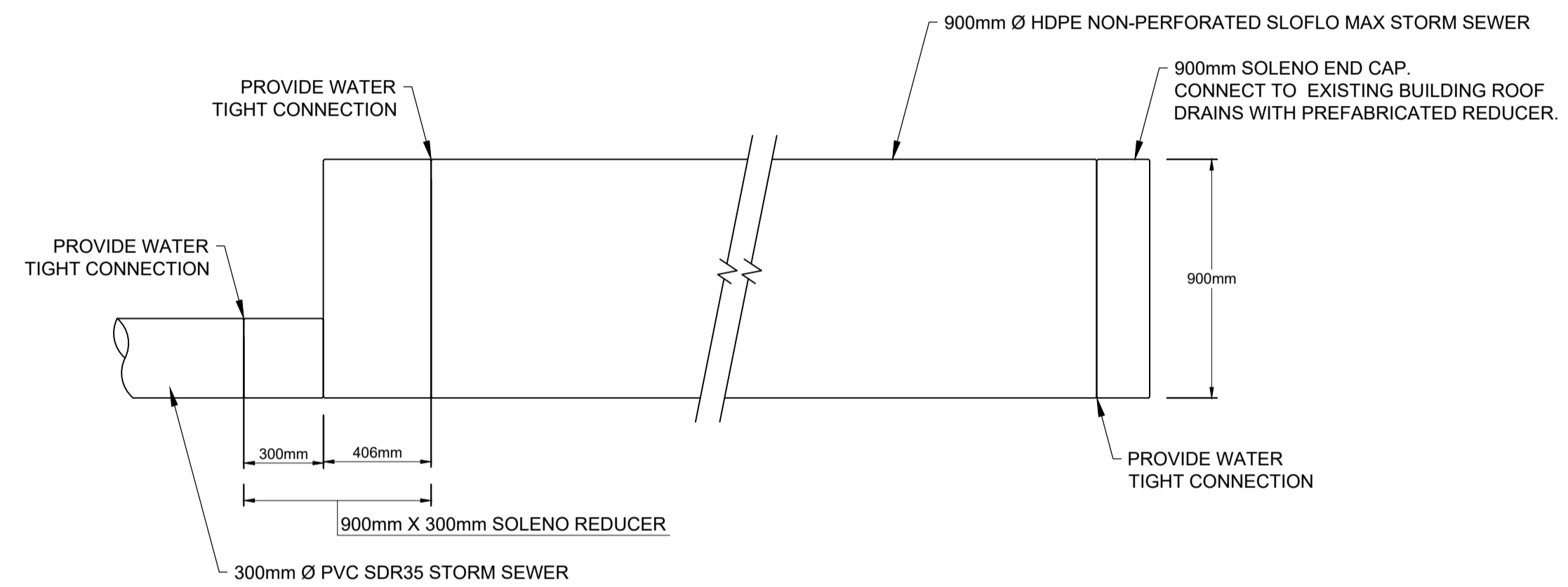
**2**  
**C3** PAVEMENT STRUCTURE FOR HEAVY DUTY TRAFFIC  
SCALE: N.T.S.



**3**  
**C3** SINGLE TRENCH SEWER SERVICES  
SCALE: N.T.S.



**4**  
**C3** CATCH BASIN FILTER BAG / INSERT  
SCALE: N.T.S.



**5**  
**C3** 900mm Ø SOLENO HDPE NON-PERFORATED SLOFLO SEWER FOR STORM WATER STORAGE  
SCALE: N.T.S.

**WATER SERVICE TABLE**

ID	DESCRIPTION	FINISHED GRADE (m)	T/O WATERMAIN (m)	CHAINAGE (m)
①	CONNECTION TO EXISTING 150mm Ø MUNICIPAL WATERMAIN	70.80	68.40	0.00
②	150mm GATE VALVE	71.49	69.09	6.50
③	BUILDING CONNECTION	71.91	69.51	15.50

NOTE: PROVIDE MINIMUM 2.4m COVER OVER T/O WATERMAIN TO FINISHED GRADE, OTHERWISE PROVIDE THERMAL INSULATION HL40 AS PER DETAIL 2/C1.

**MANHOLE AND CATCHBASIN SCHEDULE**

STRUCTURE ID	TOP OF FRAME ELEVATION (m)	PIPE INVERT ELEVATION (m)	STRUCTURE DIAMETER (mm) / OPSD No.	FRAME (OPSD)
CB-1	71.70	69.72 NE	600 / 705.010	S25 / S19
CBMH-1	71.50	69.51 E / 69.57 SW	1200 / 701.010	S25 / S28.1
CBMH-2	71.50	69.14 E / 69.20 W / 69.23 N	1200 / 701.010	S25 / S28.1
CBMH-3	71.55	68.97 W / 69.03 N / 69.06 E / 69.09 SE	1200 / 701.010	S25 / S28.1
SAMH-1	71.80	70.05 S / 69.85 N	1200 / 701.010	S25 / S24
SAMH-2	71.48	EX. 68.50 W / EX. 68.45 E / PROP. 69.62 S / 68.65 S (DROP STRUCTURE)	1500 / 701.011	S25 / S24
STMH-1	71.50	70.27 S / 68.92 N / 68.98 E / 69.07 W	1200 / 701.010	S25 / S24.1
STMH-2	71.50	EX. 68.66 W / EX. 68.63 E / PROP. 68.72 S	1200 / 701.010	S25 / S24.1

**CROSSING TABLE**

LOCATION	OVER / UNDER	T/G	INVERT	OBVERT	CLEARANCE (m)
△	PROP. SANITARY - EX. STORM	71.52	69.67 (SANITARY)	69.00 (STORM)	0.67m
△	PROP. STORM - PROP. SANITARY	71.78	70.26 (STORM)	69.34 (SANITARY)	0.92m