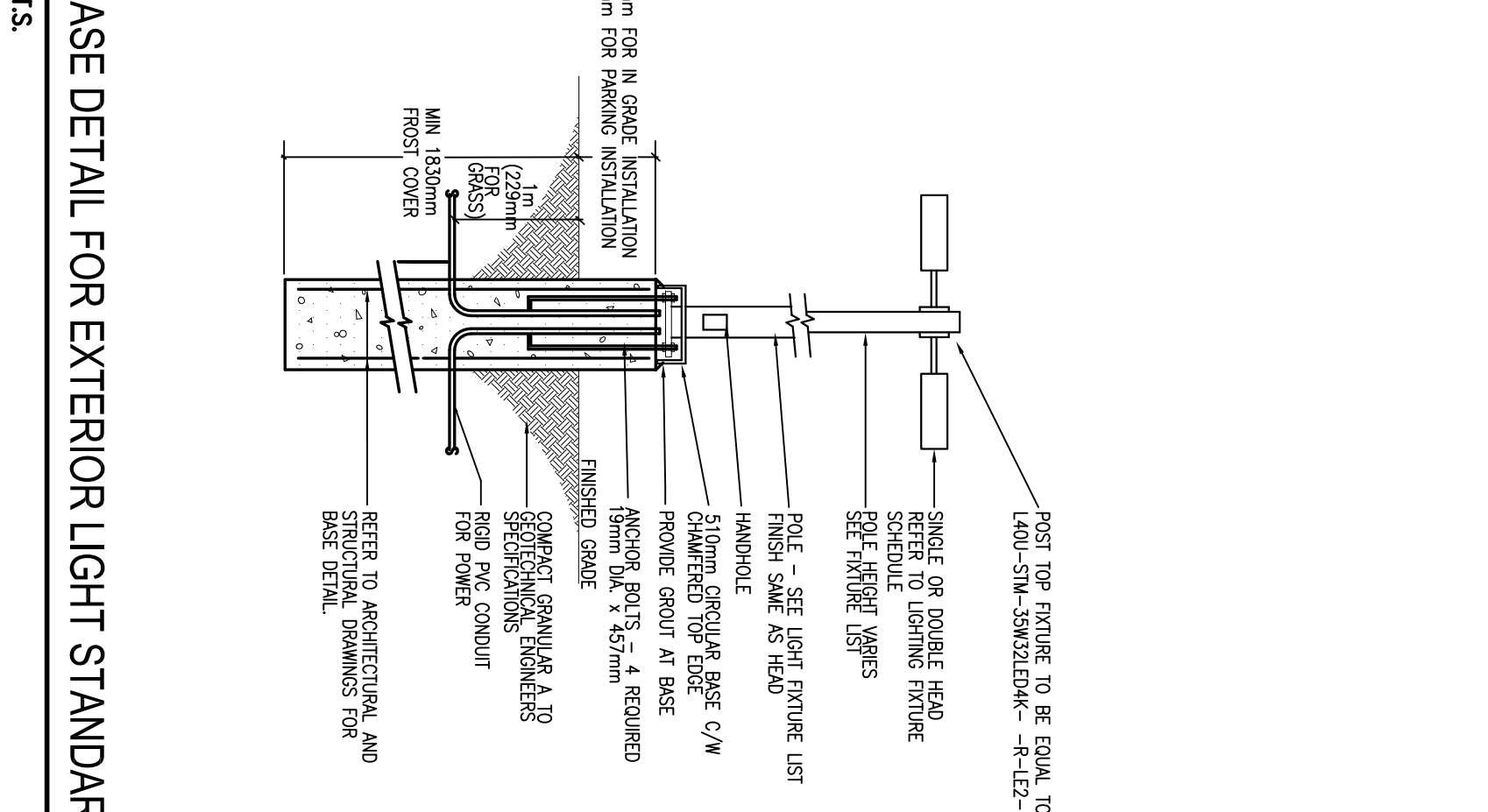


ME2 ELECTRICAL SITE PLAN

- ### DRAWING NOTES
- EXISTING FOUND HIGH VOLTAGE OVERGROUND STRUCTURE AND TRANSFORMER PAD TO BE REMOVED AND RELOCATED TO ACCOMMODATE NEW RESIDENTIAL DEVELOPMENT. ALL EXISTING HIGH VOLTAGE OVERGROUND STRUCTURES TO BE REMOVED AND RELOCATED TO ACCOMMODATE NEW RESIDENTIAL DEVELOPMENT. ALL EXISTING HIGH VOLTAGE OVERGROUND STRUCTURES TO BE REMOVED AND RELOCATED TO ACCOMMODATE NEW RESIDENTIAL DEVELOPMENT.
 - TRANSFORMER AND CABLE DISTRIBUTION SECTION TO BE OVERLAP SHIPPED. REMOVE EXISTING TRANSFORMER AND CABLE DISTRIBUTION SECTION TO BE OVERLAP SHIPPED. REMOVE EXISTING TRANSFORMER AND CABLE DISTRIBUTION SECTION TO BE OVERLAP SHIPPED.
 - REMOVE 1 x 75MM CONDUIT FROM BELT AND 1 x 75MM CONDUIT FROM CABLE TV FROM INTERIOR DUE TO NEW RESIDENTS AND TO BE RELOCATED DURING CONSTRUCTION. REMOVE 1 x 75MM CONDUIT FROM BELT AND 1 x 75MM CONDUIT FROM CABLE TV FROM INTERIOR DUE TO NEW RESIDENTS AND TO BE RELOCATED DURING CONSTRUCTION.
 - REMOVE 2x100MM NEW 15KV CABLES AND CORDS ALONG UNDER ROADS TO FIELD NEW CONDUIT TRANSFORMER.
 - REMOVE CONCRETE EXPOSED PORT BANK UNDER ROADS. ALL HIGH VOLTAGE DUCT TO BE RELOCATED TO BE COMPACTER STRUCTURE.
 - REMOVE CONCRETE EXPOSED PORT BANK UNDER ROADS. ALL HIGH VOLTAGE DUCT TO BE RELOCATED TO BE COMPACTER STRUCTURE.
 - REMOVE CONCRETE EXPOSED PORT BANK UNDER ROADS. ALL HIGH VOLTAGE DUCT TO BE RELOCATED TO BE COMPACTER STRUCTURE.



<p>Goodkey Weedmark Consulting Engineers</p> <p>1938 Woodbine Dr. Scarborough, Ontario M1S 1W5 Canada K1C 3R8</p>	<p>Goodkey Weedmark & Associates Limited</p> <p>1938 Woodbine Dr. Scarborough, Ontario M1S 1W5 Canada K1C 3R8</p>	<p>ME2</p> <p>NOVEMBER 2018</p>	<p>QUALICUM WOODS CROSSING MORRISON & BASELINE ROAD OTTAWA, ON</p>	<p>Project No. / No. du projet: 2017-292</p> <p>Scale: AS NOTED</p> <p>Drawn by: M. TROTTER</p> <p>Checked by: M. TROTTER</p> <p>Designed by: AMIKHAEL</p>
--------------------------------------------------------------------------------------------------------------------------------------	--------------------------------------------------------------------------------------------------------------------------------------	----------------------------------------	---------------------------------------------------------------------------------------	------------------------------------------------------------------------------------------------------------------------------------------------------------