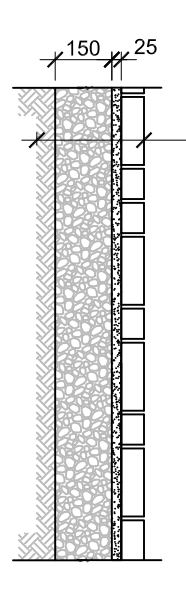


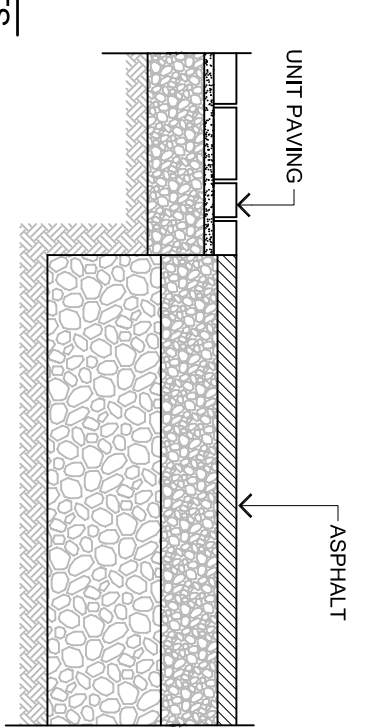
1a  
UNIT PAVING/  
NTS



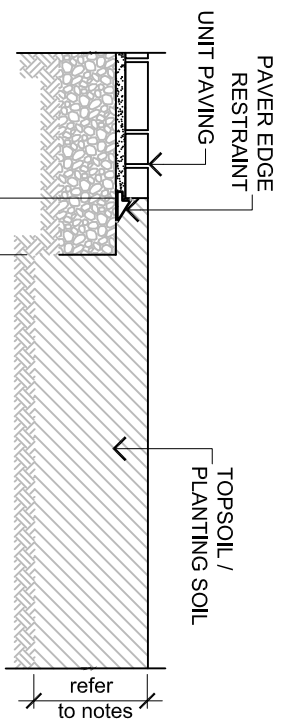
1b  
CURB SECTION/  
NTS



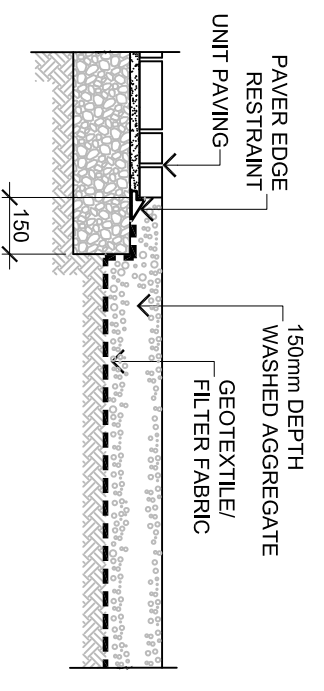
1c  
UNIT PAVING/  
ASPHALT



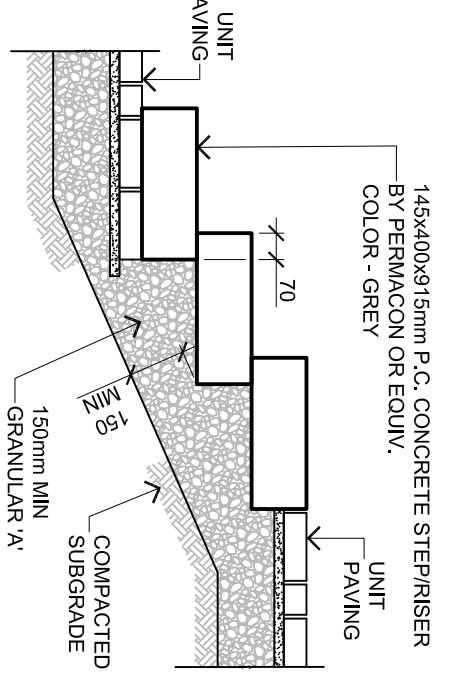
1d  
UNIT PAVING/  
SOD/PLANTING SECTION



1e  
UNIT PAVING/  
AGGREGATE SECTION

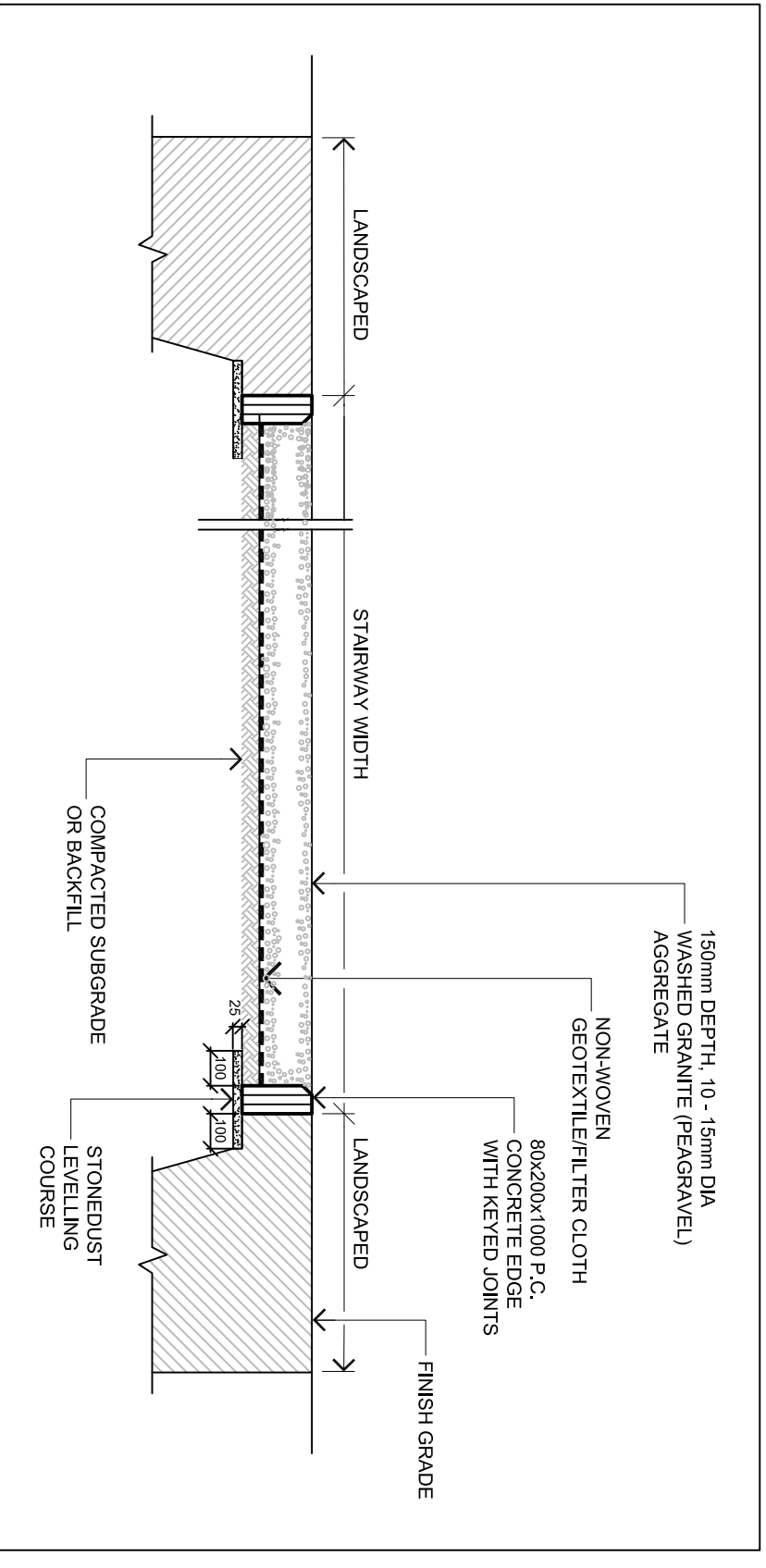


1f  
UNIT PAVING/  
P.C. CONCRETE STEP(S)/RISER(S) SECTION

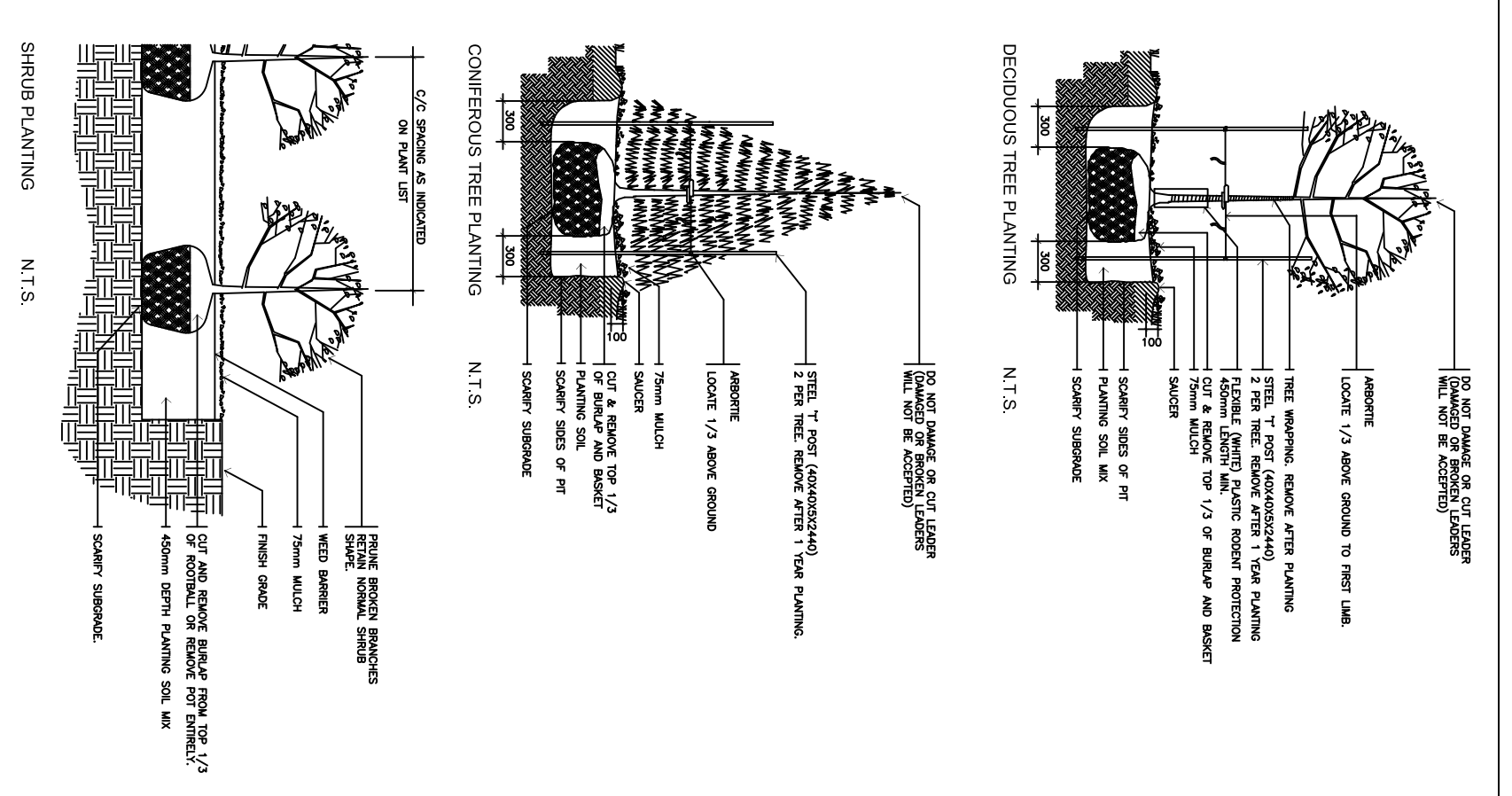


1  
UNIT PAVING DETAILS NTS

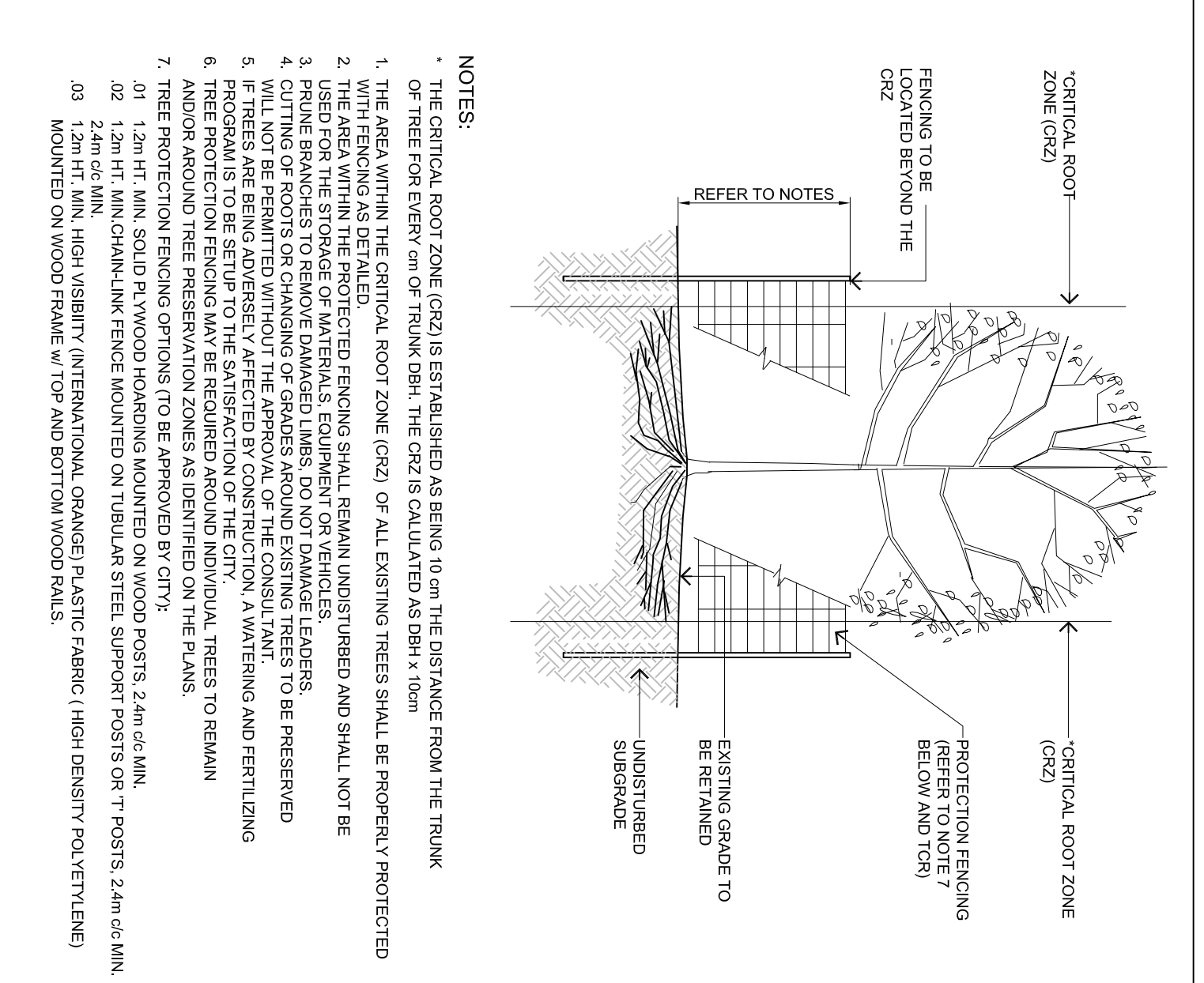
2  
AGGREGATE SURFACE SECTION (UNDER STAIRWAY) 1:20



3  
PLANTING DETAILS NTS



4  
TREE PROTECTION BARRIER NTS



NOTES:  
 • THE CRITICAL ROOT ZONE (CRZ) IS ESTABLISHED AS BEING 10m ON THE DISTANCE FROM THE TRUNK OF TREE FOR EVERY cm OF TRUNK DBH. THE CRZ IS CALCULATED AS DBH x 10m  
 1. THE AREA WITHIN THE CRITICAL ROOT ZONE (CRZ) OF ALL EXISTING TREES SHALL BE PROPERLY PROTECTED WITH FENCING AS DETAIL.  
 2. USED FOR THE STORAGE OF MATERIALS, EQUIPMENT OR VEHICLES.  
 3. FENCE BRANCHES TO REMOVE DAMAGED LIMBS, DO NOT DAMAGE LEADERS.  
 4. FENCING SHALL NOT BE PERMITTED WITHOUT THE APPROVAL OF THE CONSULTANT.  
 5. IF TREES ARE BEING ADVERSELY AFFECTED BY CONSTRUCTION, A WATERING AND FERTILIZING AND/OR AROUND TREE PRESERVATION ZONES AS IDENTIFIED ON THE PLANS.  
 6. TREE PROTECTION FENCING OPTIONS TO BE APPROVED BY CITY.  
 7. TREE PROTECTION FENCING SHALL BE MOUNTED ON WOOD POSTS 2.4m O.C. MIN.  
 8. 1.2m HT. MIN. SOLID PLASTIC OR POLYETHYLENE SHEETING SHALL BE MOUNTED ON TOP OF POSTS.  
 9. 1.2m HT. MIN. HIGH VISIBILITY (INTERMITTENT ORANGE) PLASTIC FABRIC (HIGH DENSITY POLYETHYLENE) MOUNTED ON WOOD FRAME BY TOP AND BOTTOM WOOD PAILS.

NOT FOR CONSTRUCTION

NO.	DATE	REVISION
08	DEC. 1/16	ISSUE FOR PHASE 2 SPA
05	AUG. 31/18	PER CITY COMMENTS (4)
04	JULY 31/18	ISSUED FOR SITE PLAN APPROVAL
03	MAR. 29/18	PER CITY COMMENTS (2)
02	NOV. 28/17	PER CITY COMMENTS (1) / REVISED SITE
01	JUNE 12/17	ISSUE FOR SPA

Consultant  
**LEVSTEK CONSULTANTS**  
 A. N. D. S. C. A. P. E. R. S. E. N. C. E. S.  
 8871 HERShey CRESCENT, OTTAWA, ONTARIO K1A 2W8  
 453-528-5518

Client  
**Greatwise DEVELOPMENTS**  
 FRESH TOWNS  
 2710 DRAPER AVENUE  
 PHASE 2  
 OTTAWA ONTARIO

Drawing Title  
**LANDSCAPE DETAILS**

Drawn By  
**MGB**

Checked By  
**SEPT. 2018**

Scale  
**AS NOTED**

Drawing No.  
**L2.01**

Project No.  
**1130.02**