

IT IS THE RESPONSIBILITY OF THE APPROPRIATE CONTRACTOR TO CHECK AND VERIFY ALL DIMENSIONS ON SITE AND TO REPORT ALL ERRORS AND/OR OMISSIONS TO THE ARCHITECT.
ALL CONTRACTORS MUST COMPLY WITH ALL PERTINENT CODES AND BY-LAWS.
THIS DRAWING MAY NOT BE USED FOR CONSTRUCTION UNTIL SIGNED BY THE ARCHITECT.
DO NOT SCALE DRAWINGS.

NOTATION SYMBOLS:

- (01) INDICATES DRAWING NOTES, LISTED ON EACH SHEET.
- (02) INDICATES ASSEMBLY TYPE; REFER TO TYPICAL ASSEMBLIES SCHEDULE.
- (03) INDICATES WINDOW TYPE; REFER TO WINDOW ELEVATIONS AND DETAILS ON A900 SERIES.
- (04) INDICATES DOOR TYPE; REFER TO DOOR SCHEDULE AND DETAILS ON A900 SERIES.
- (05) —DETAIL NUMBER
- (06) TITLE
- (07) SCALE
- (08) —DETAIL REFERENCE PAGE
- (09) —DETAIL CROSS REFERENCE PAGE


GENERAL NOTES:

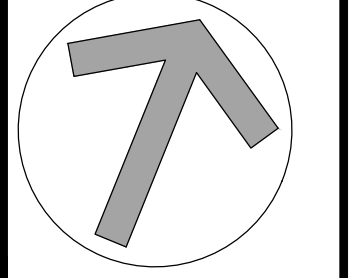
- (A) REFER TO TYPICAL ASSEMBLIES SHEET FOR WALL, PARTITION, ROOF CEILING & FLOOR TYPES.
- (B) FOR DOOR TYPES AND HARDWARE REQUIREMENTS REFER TO DOOR SCHEDULE ON A900 SERIES.
- (C) ALL INTERIOR DIMENSIONS ARE TAKEN FROM THE FACE OF STUD.
- (D) ALL EXTERIOR DIMENSIONS ARE TAKEN FROM THE FACE OF STUD.
- (E) ALL EXTERIOR WALLS ARE TO BE TYPE 'W1' UNLESS NOTED OTHERWISE.
- (F) ALL INTERIOR PARTITIONS ARE TO BE TYPE 'P1' UNLESS NOTED OTHERWISE.
- (G) ALL REINFORCED CONCRETE SUSPENDED SLABS, COLUMNS & BEAMS HAVE A MIN. FRR OF 1.5 HRS (AS DETERMINED BY OBC SB-2) UNLESS OTHERWISE STATED.

ISSUED FOR SITE PLAN CONTROL PHASE 2	Dec. 06.18
ISSUED FOR SITE PLAN CONTROL PHASE 2	Oct. 31.18
ISSUED FOR SITE PLAN CONTROL REVISED CONCEPT	Nov 13.17
ISSUED FOR SITE PLAN CONTROL	June 06.17

No.	DESCRIPTION	DATE
-----	-------------	------

REVISIONS:

ARCHITECT SEAL:

RODERICK LAHEY
LICENCE
4275
SEAL DATE: STAMP DATE

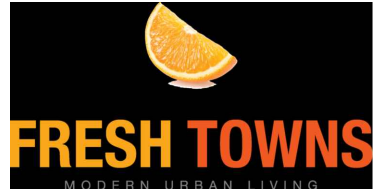
NORTH ARROW:


CLIENT:



ARCHITECT:

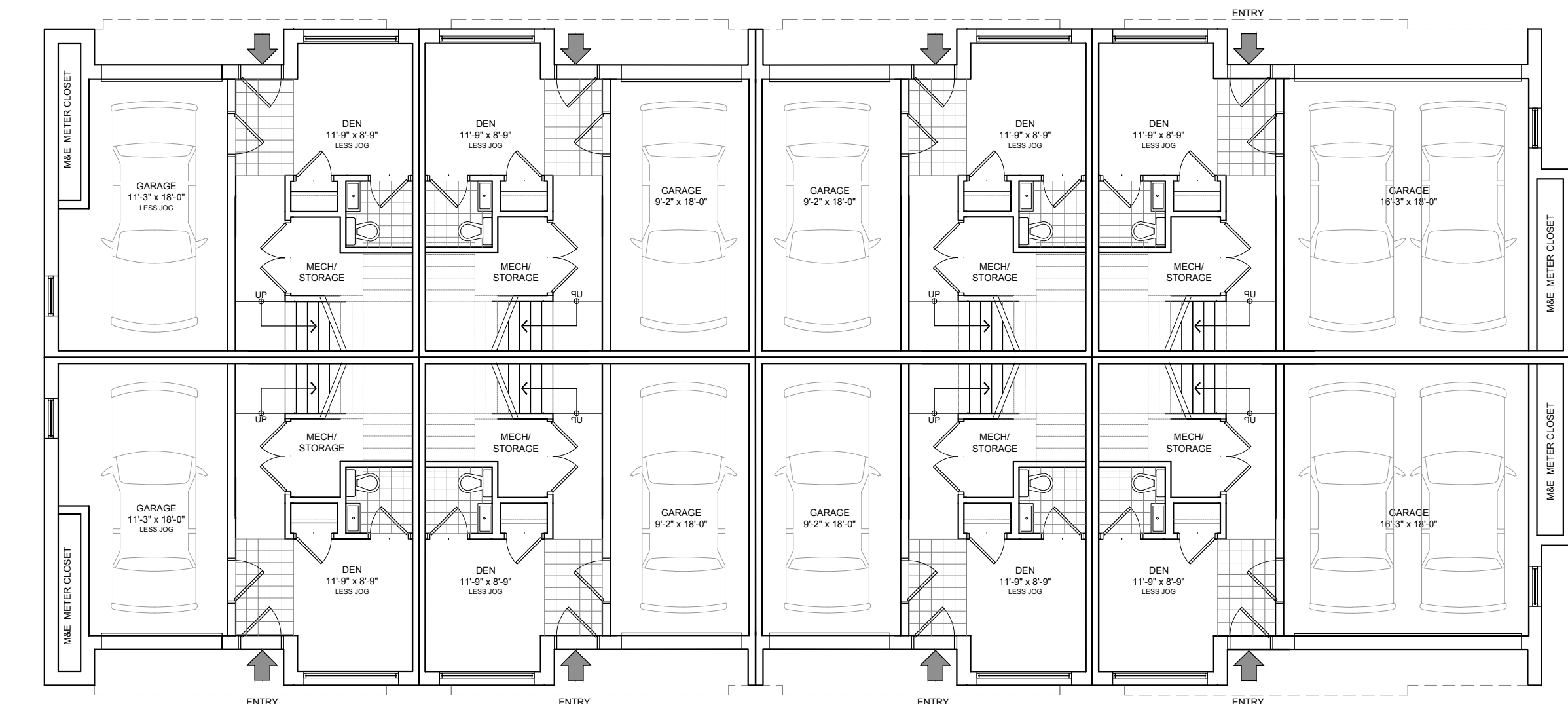
rla/architecture
56 Beech Street, Ottawa, Ontario K1S 3J6
t.613.724.9932 f.613.724.1209 www.rodericklahey.ca

PROJECT TITLE:

2710 DRAPER AVENUE
OTTAWA ONTARIO

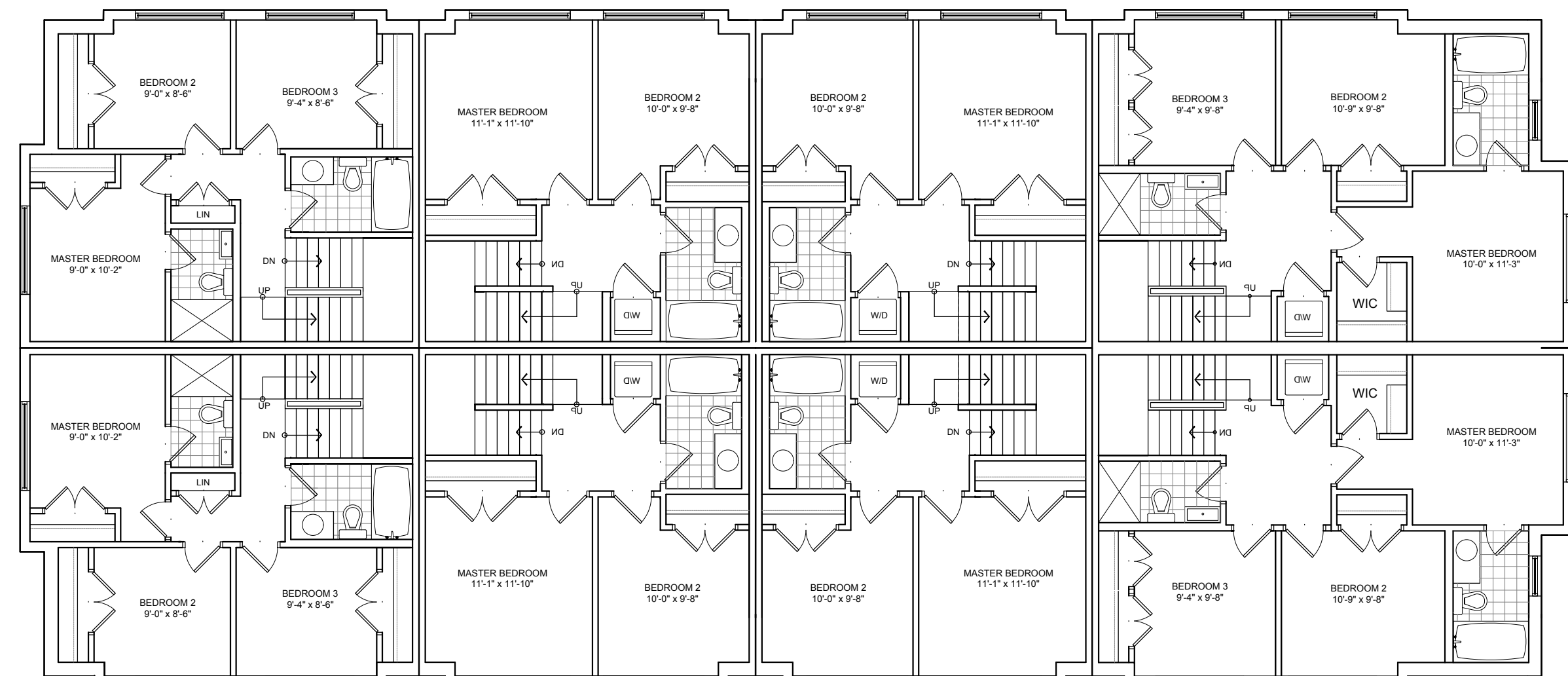
SHEET TITLE:

FLOOR PLANS

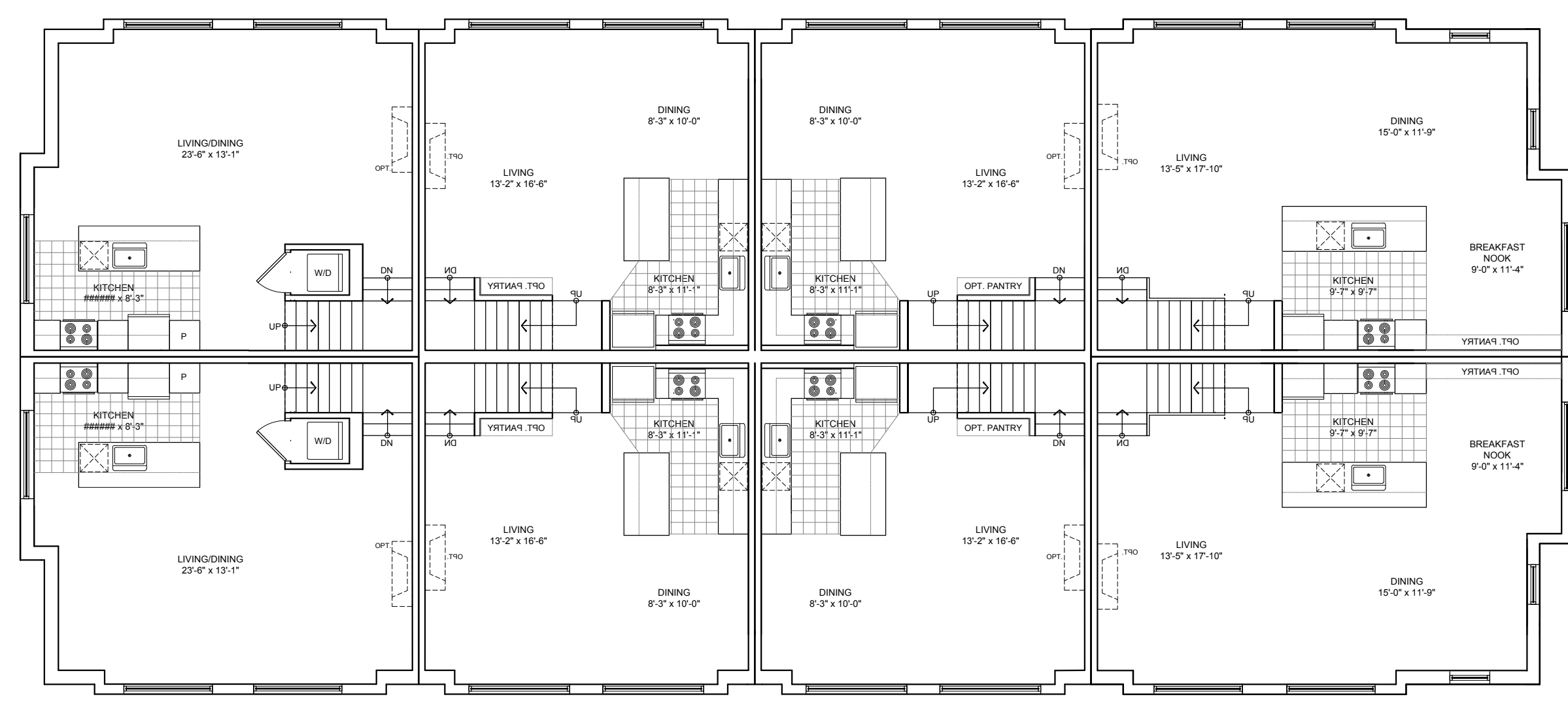
DRAWN: RV	CHECKED: LL
SCALE: 1 : 100	SHEET No.
PROJECT No. 1020	A-02



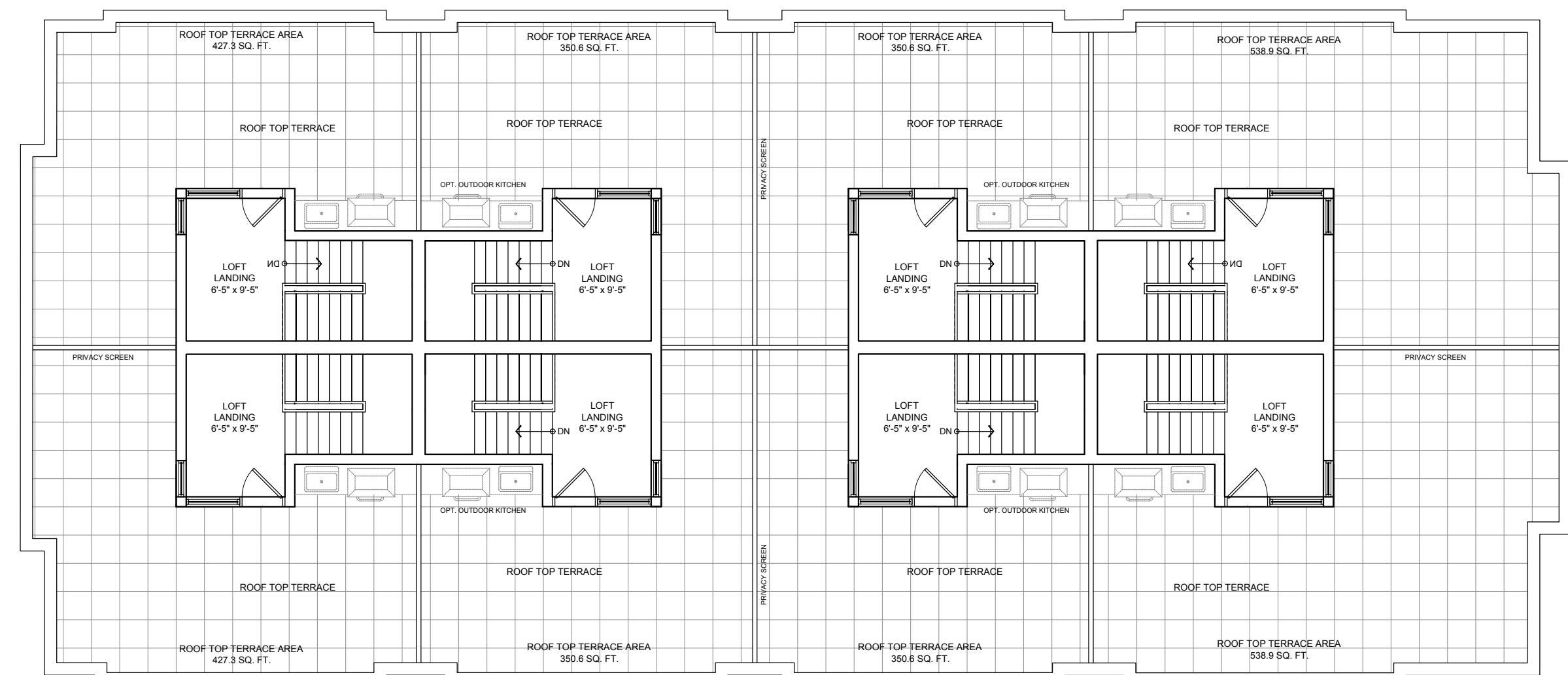
GROUND FLOOR PLAN



THIRD FLOOR PLAN



SECOND FLOOR PLAN



ROOF PLAN

BLOCK 1

BLOCK 2, 3, 4, 6 & 7 (SIMILAR)



BLOCK 11 (SIMILAR)

NOTATION SYMBOLS:

-
- 00 INDICATES DRAWING NOTES, LISTED ON EACH SHEET.
- ◇ INDICATES ASSEMBLY TYPE; REFER TO TYPICAL ASSEMBLIES SCHEDULE.
- ◇ INDICATES WINDOW TYPE; REFER TO WINDOW ELEVATIONS AND DETAILS ON A900 SERIES.
- 000 INDICATES DOOR TYPE; REFER TO DOOR SCHEDULE AND DETAILS ON A900 SERIES.
- DETAIL NUMBER
- 00 TITLE — SCALE
- DETAIL REFERENCE PAGE
- DETAIL CROSS REFERENCE PAGE

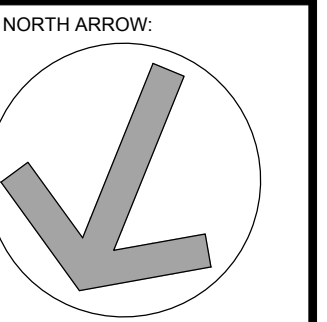
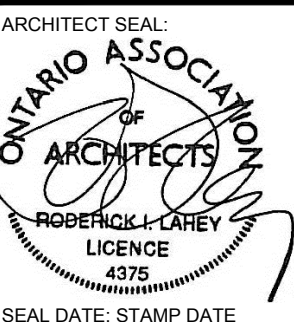
GENERAL NOTES:

- | | |
|---|--|
| A | REFER TO TYPICAL ASSEMBLIES SHEET FOR WALL, PARTITION, ROOF CEILING & FLOOR TYPES. |
| B | FOR DOOR TYPES AND HARDWARE REQUIREMENTS REFER TO DOOR SCHEDULE ON A900 SERIES. |
| C | ALL INTERIOR DIMENSIONS ARE TAKEN FROM THE FACE OF STUD. |
| D | ALL EXTERIOR DIMENSIONS ARE TAKEN FROM THE FACE OF STUD. |
| E | ALL EXTERIOR WALLS ARE TO BE TYPE 'W1' UNLESS NOTED OTHER WISE. |
| F | ALL INTERIOR PARTITIONS ARE TO BE TYPE 'P1' UNLESS NOTED OTHER WISE. |
| G | ALL REINFORCED CONCRETE SUSPENDED SLABS, COLUMNS & BEAMS HAVE A MIN. FRR OF 1.5 HRS (AS DETERMINED BY CBC SB-2) UNLESS OTHERWISE STATED. |

[illegible]

4	ISSUED FOR SITE PLAN CONTROL PHASE 2	Dec. 06,18
3	ISSUED FOR SITE PLAN CONTROL PHASE 2	Oct. 31,18
2	ISSUED FOR SITE PLAN CONTROL REVISED CONCEPT	Nov 13,17
1	ISSUED FOR SITE PLAN CONTROL	June 06,17
no.	DESCRIPTION	DATE

REVISIONS



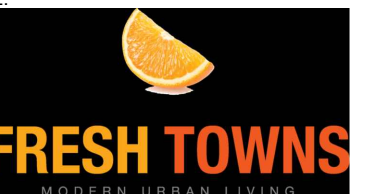
CLIENT:



ARCHITECT

rla / architecture
56 Beech Street, Ottawa, Ontario K1S 3J6
t.613.724.9932 f.613.724.1209 www.rodericklahey.ca

PROJECT TITLE: _____

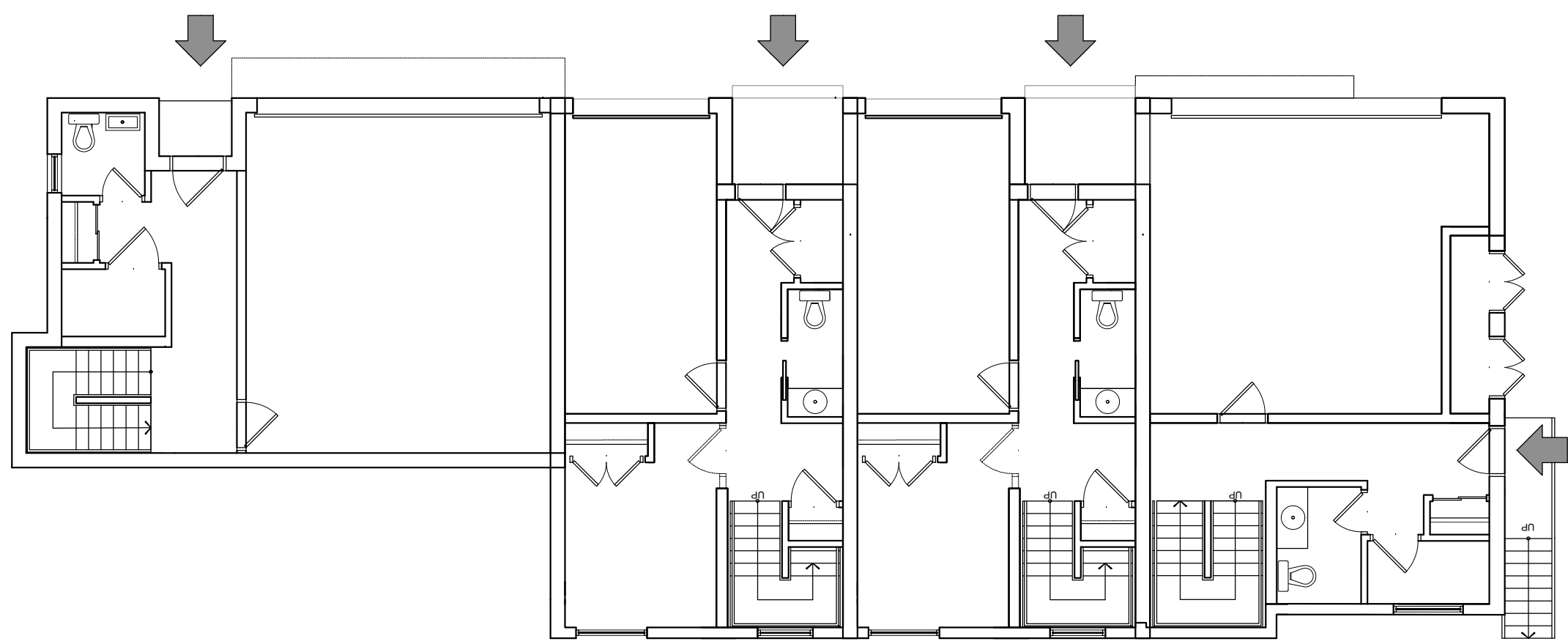


OTTAWA ONTARIO

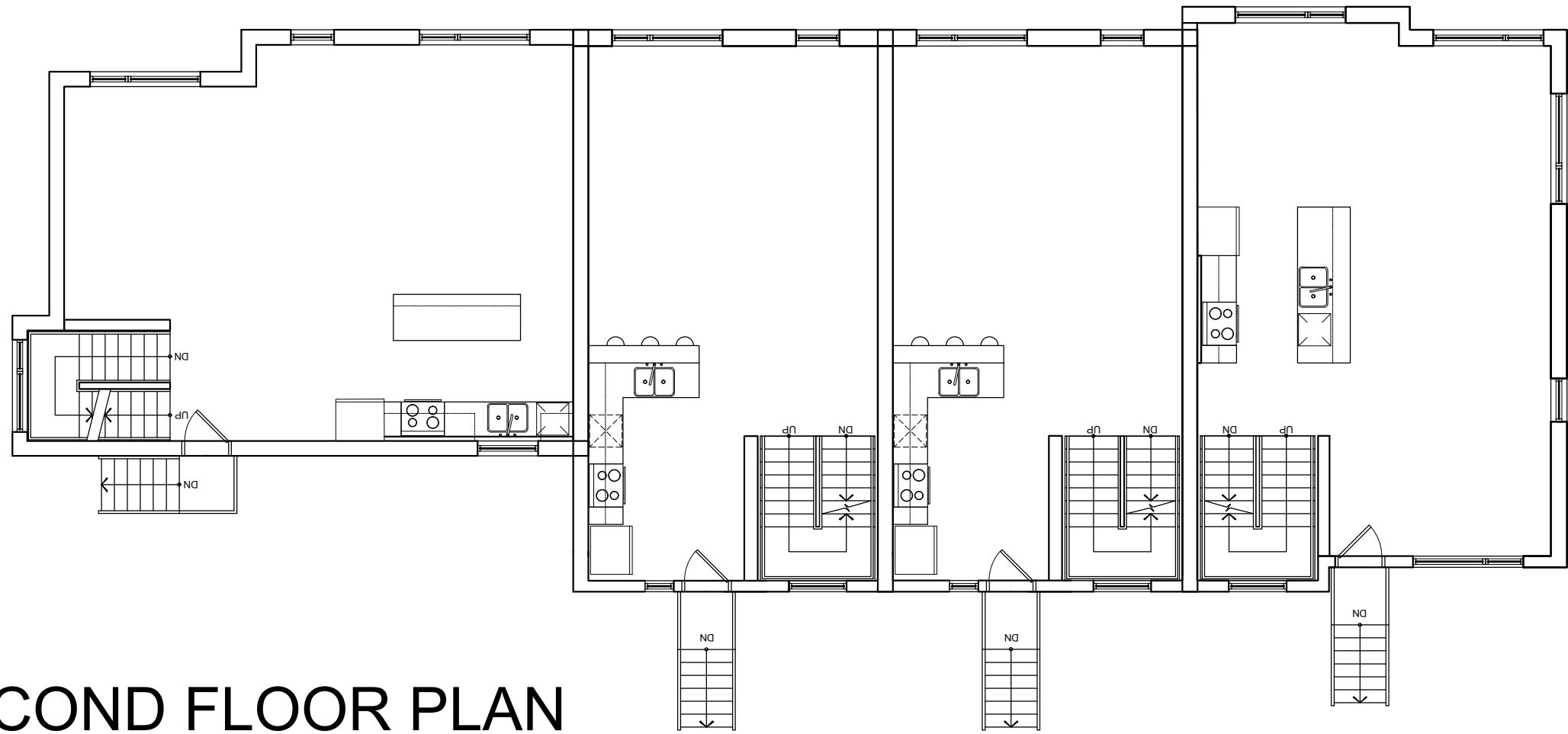
SHEET TITLE

FLOOR PLANS

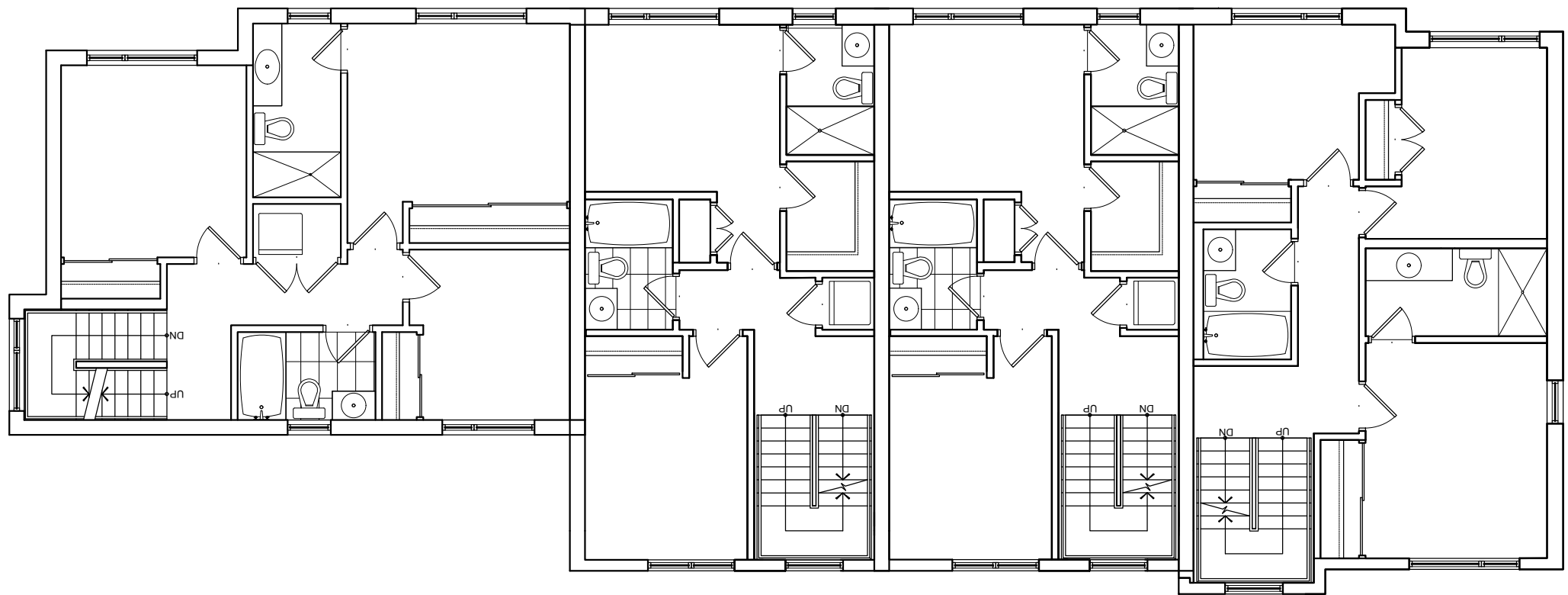
DRAWN: RV	CHECKED: LL
SCALE: 1 : 100	SHEET No. A-03
PROJECT No. 1020	



GROUND FLOOR PLAN



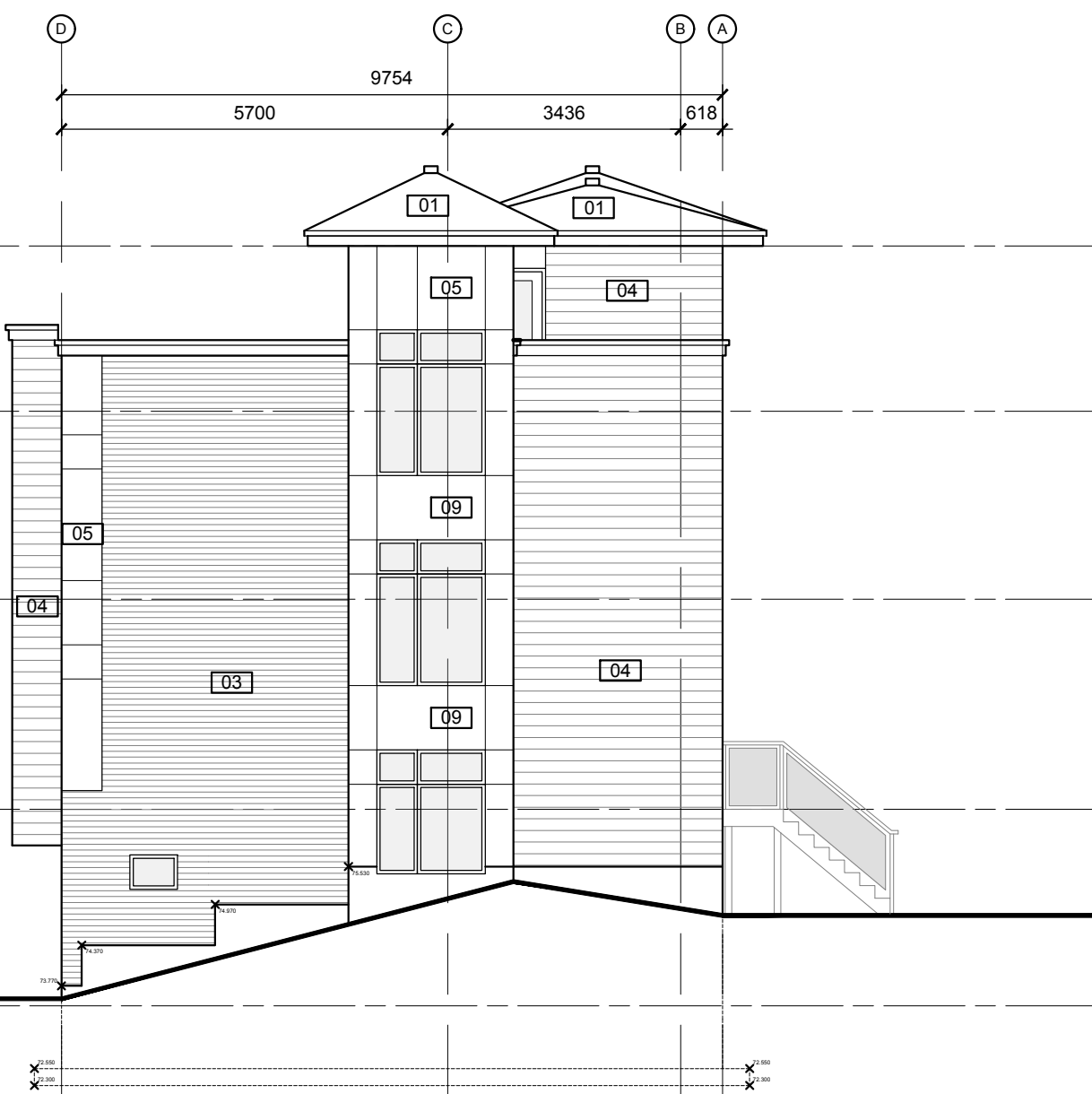
SECOND FLOOR PLAN



THIRD FLOOR PLAN



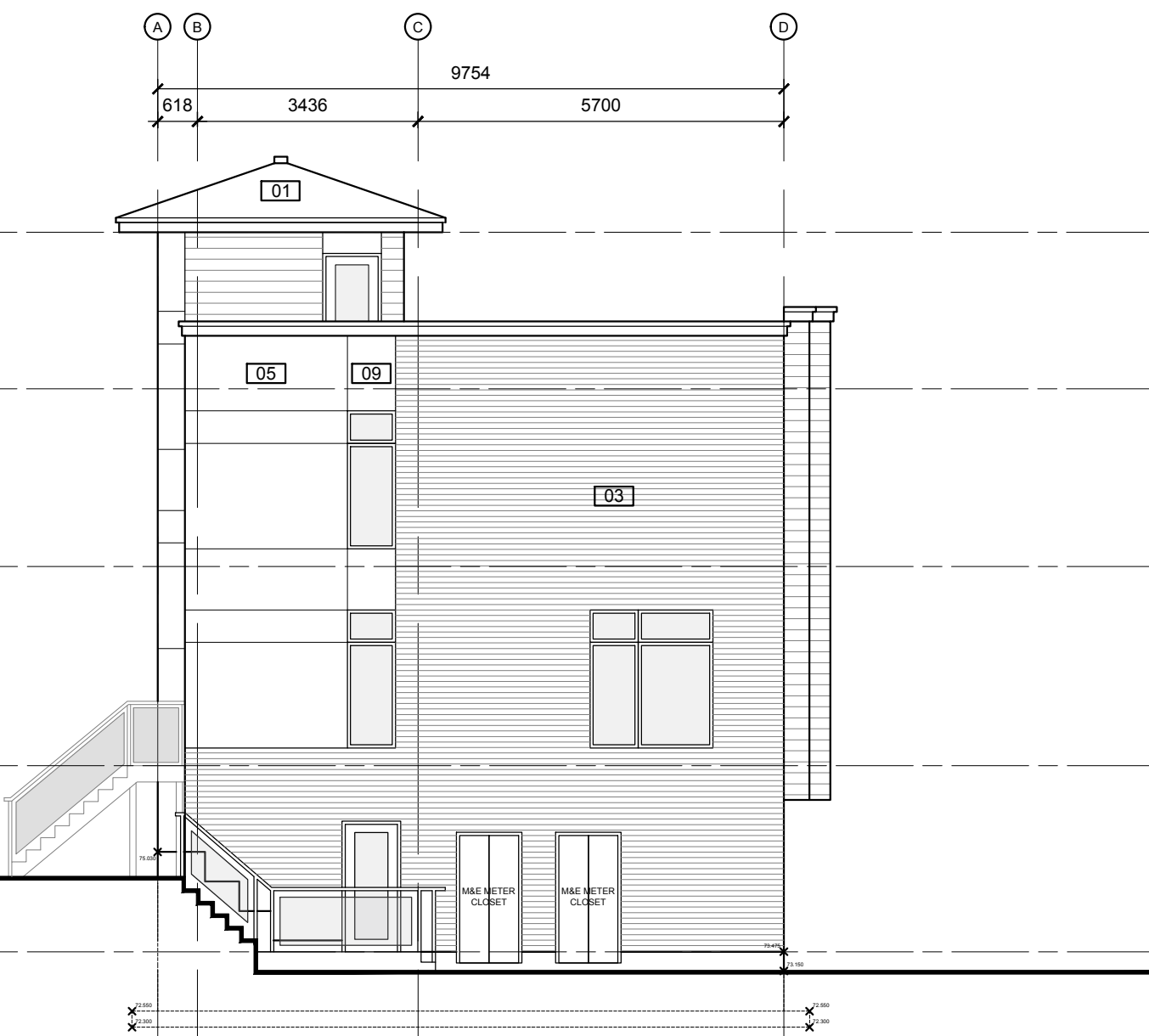
FRONT ELEVATION



SIDE ELEVATION



REAR ELEVATION



SIDE ELEVATION

COLOUR PALETTE & MATERIAL LEGEND			
01	— ASPHALT SHINGLES (RED CAMBRIDGE, WEATHERED WOOD)	07	— SCUPPER AND DRAINAGE/ROOFING (LIGHT CONCRETE GREY)
02	— PRE-FINISHED ALUMINUM FASCIA & FLASHINGS AND WINDOWS	08	— CONCRETE PARKING (EXTEND 10MM BELOW GRADE)
03	— RED BRICK, BRAMPTON PREMIER SIZE, BEAUFORT M1	09	— PRE-FINISHED METAL PANELS (W/ PRE-FINISHED METAL TRIM (DARK GRAY))
04	— SAGGER SAGAZAL SCORP, KNOTTY MAPLE #19	10	— ENTRY DOORS & ACCENT PANELS, BENJAMIN MOORE, FIREBALL ORANGE
05	— HARDIE BOARD ACCENT PANEL, C/W ALUMINUM TRIM (LIGHT CONCRETE GRAY)	11	— GARAGE & MECHANICAL DOORS, BENJAMIN MOORE, STARDUST
06	— PRECAST CONCRETE STEPS AND RAMP	12	— PRE-FINISHED METAL PANELS (W/ PRE-FINISHED METAL TRIM (BATCH BRICK))

BLOCKS 10

BLOCK 9 (SIMILAR)

IT IS THE RESPONSIBILITY OF THE APPROPRIATE CONTRACTOR TO CHECK AND VERIFY ALL DIMENSIONS ON SITE AND TO REPORT ALL ERRORS AND/OR OMISSIONS TO THE ARCHITECT.
ALL CONTRACTORS MUST COMPLY WITH ALL PERTINENT CODES AND BY-LAWS.
THIS DRAWING MAY NOT BE USED FOR CONSTRUCTION UNTIL SIGNED BY THE ARCHITECT.
DO NOT SCALE DRAWINGS.

NOTATION SYMBOLS:

- INDICATES DRAWING NOTES, LISTED ON EACH SHEET.
- INDICATES ASSEMBLY TYPE; REFER TO TYPICAL ASSEMBLIES SCHEDULE.
- INDICATES WINDOW TYPE; REFER TO WINDOW ELEVATIONS AND DETAILS ON A900 SERIES.
- INDICATES DOOR TYPE; REFER TO DOOR SCHEDULE AND DETAILS ON A900 SERIES.
- DETAIL NUMBER
- TITLE
- SCALE
- DETAIL REFERENCE PAGE
- DETAIL CROSS REFERENCE PAGE

GENERAL NOTES:

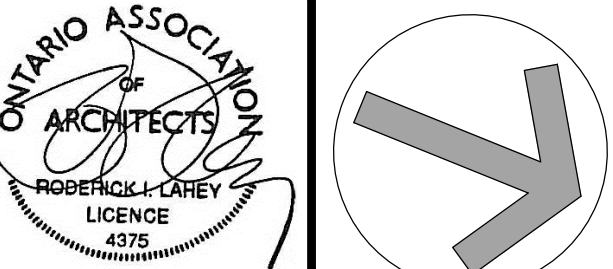
- REFER TO TYPICAL ASSEMBLIES SHEET FOR WALL, PARTITION, ROOF CEILING & FLOOR TYPES.
- FOR DOOR TYPES AND HARDWARE REQUIREMENTS REFER TO DOOR SCHEDULE ON A900 SERIES.
- ALL INTERIOR DIMENSIONS ARE TAKEN FROM THE FACE OF STUD.
- ALL EXTERIOR DIMENSIONS ARE TAKEN FROM THE FACE OF STUD.
- ALL EXTERIOR WALLS ARE TO BE TYPE "W1" UNLESS NOTED OTHERWISE.
- ALL INTERIOR PARTITIONS ARE TO BE TYPE "P1" UNLESS NOTED OTHERWISE.
- ALL REINFORCED CONCRETE SUSPENDED SLABS, COLUMNS & BEAMS HAVE A MIN. FRR OF 1.5 HRS (AS DETERMINED BY OBC SB-2) UNLESS OTHERWISE STATED.

ISSUED FOR SITE PLAN CONTROL PHASE 2 Dec. 6, 18

ISSUED FOR SITE PLAN CONTROL PHASE 2 Oct. 31, 18

No. DESCRIPTION DATE

REVISIONS:

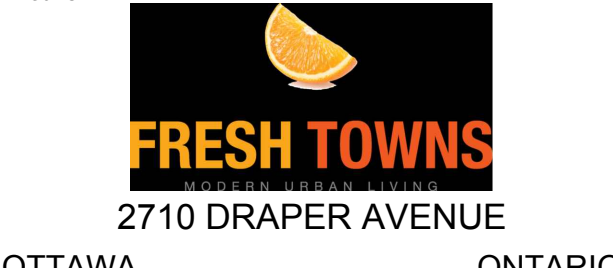


CLIENT:



ARCHITECT:

rla/architecture
56 Beech Street, Ottawa, Ontario K1S 3J6
t.613.724.9932 f.613.724.1209 www.rodericklahey.ca



SHEET TITLE:

FLOOR PLANS
AND ELEVATIONS

DRAWN: LM CHECKED: LM

SCALE: 1 : 100 SHEET No.

PROJECT No. 1020

A-04

IT IS THE RESPONSIBILITY OF THE APPROPRIATE CONTRACTOR TO CHECK AND VERIFY ALL DIMENSIONS ON SITE AND TO REPORT ALL ERRORS AND/OR OMISSIONS TO THE ARCHITECT.
ALL CONTRACTORS MUST COMPLY WITH ALL PERTINENT CODES AND BY-LAWS.
THIS DRAWING MAY NOT BE USED FOR CONSTRUCTION UNTIL SIGNED BY THE ARCHITECT.
DO NOT SCALE DRAWINGS.

NOTATION SYMBOLS:

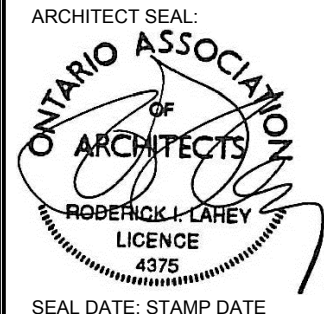
- (01) INDICATES DRAWING NOTES, LISTED ON EACH SHEET.
- (02) INDICATES ASSEMBLY TYPE; REFER TO TYPICAL ASSEMBLIES SCHEDULE.
- (03) INDICATES WINDOW TYPE; REFER TO WINDOW ELEVATIONS AND DETAILS ON A900 SERIES.
- (04) INDICATES DOOR TYPE; REFER TO DOOR SCHEDULE AND DETAILS ON A900 SERIES.
- (05) DETAIL NUMBER
- (06) TITLE
- (07) SCALE
- (08) DETAIL REFERENCE PAGE
- (09) DETAIL CROSS REFERENCE PAGE

GENERAL NOTES:

- (A) REFER TO TYPICAL ASSEMBLIES SHEET FOR WALL, PARTITION, ROOF CEILING & FLOOR TYPES.
- (B) FOR DOOR TYPES AND HARDWARE REQUIREMENTS REFER TO DOOR SCHEDULE ON A900 SERIES.
- (C) ALL INTERIOR DIMENSIONS ARE TAKEN FROM THE FACE OF STUD
- (D) ALL EXTERIOR DIMENSIONS ARE TAKEN FROM THE FACE OF STUD
- (E) ALL EXTERIOR WALLS ARE TO BE TYPE 'W1' UNLESS NOTED OTHERWISE
- (F) ALL INTERIOR PARTITIONS ARE TO BE TYPE 'P1' UNLESS NOTED OTHERWISE
- (G) ALL REINFORCED CONCRETE SUSPENDED SLABS, COLUMNS & BEAMS HAVE A MIN. FRR OF 1.5 HRS (AS DETERMINED BY OBC SB-2) UNLESS OTHERWISE STATED.

ISSUED FOR SITE PLAN CONTROL PHASE 2	Dec. 06.18
ISSUED FOR SITE PLAN CONTROL PHASE 2	Oct. 31.18
ISSUED FOR SITE PLAN CONTROL REVISED CONCEPT	Nov 13.17
ISSUED FOR SITE PLAN CONTROL	June 06.17
No. DESCRIPTION	DATE

REVISIONS:



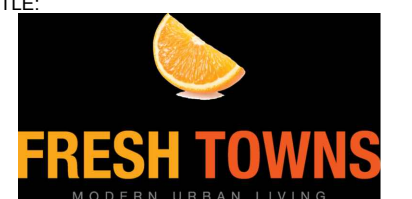
CLIENT:



ARCHITECT:

rla/architecture
56 Beech Street, Ottawa, Ontario K1S 3J6
t.613.724.9932 f.613.724.1209 www.roderricklahey.ca

PROJECT TITLE:



OTTAWA ONTARIO

SHEET TITLE:

BUILDING ELEVATIONS

DRAWN:

RV

SCALE:

1: 100

PROJECT No.

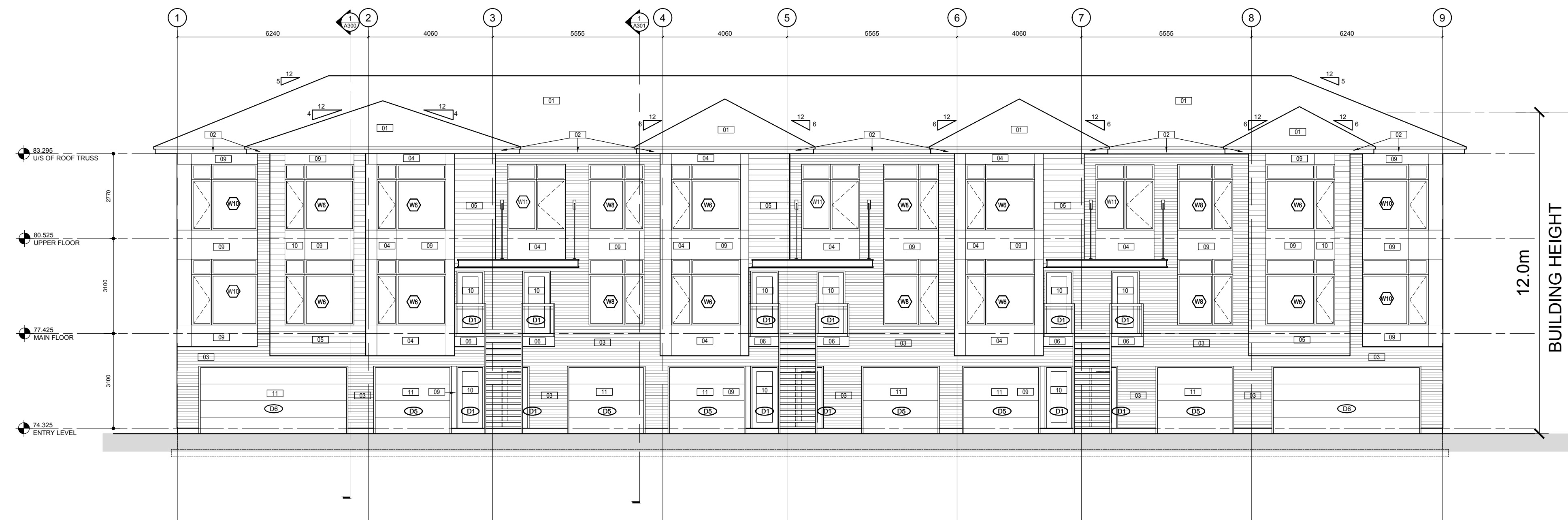
1020

CHECKED:

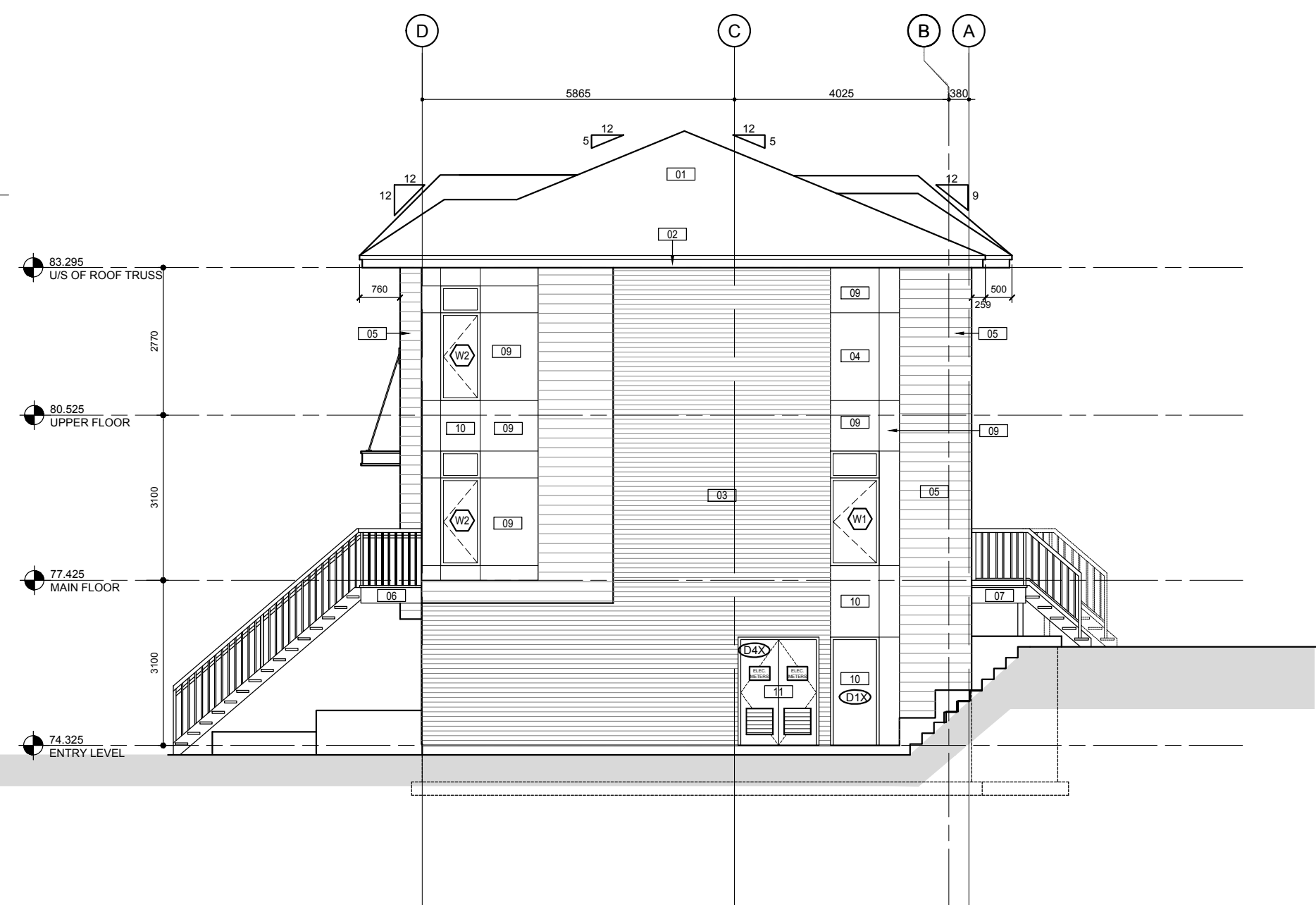
LL

SHEET No.

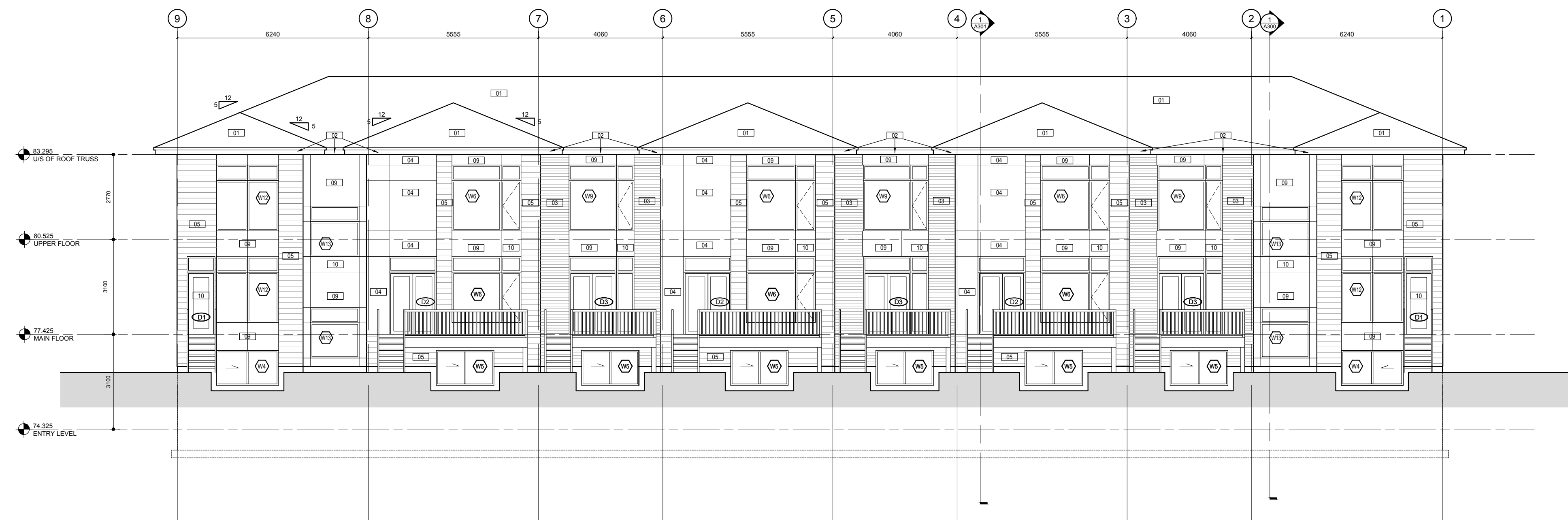
A-06



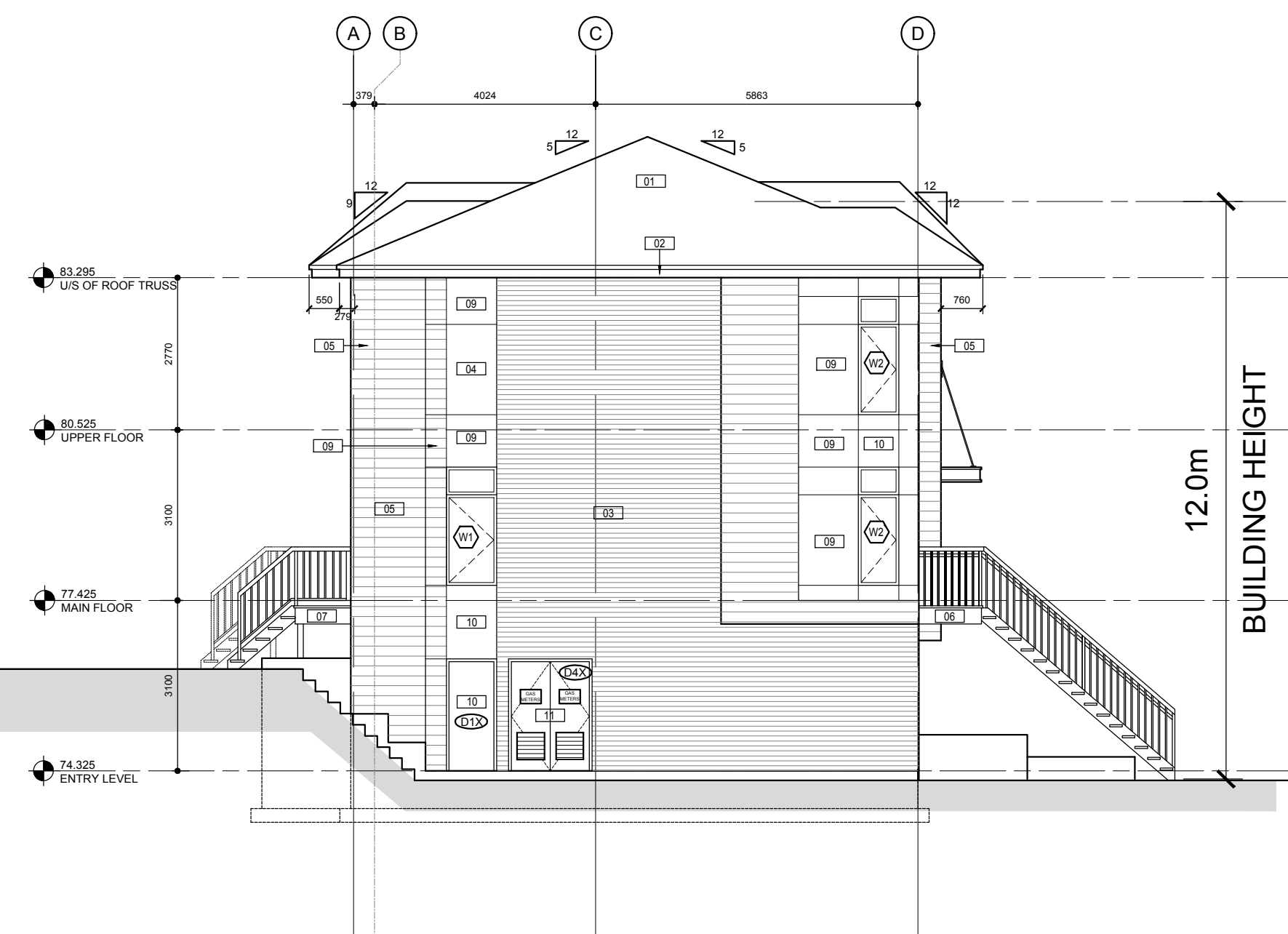
FRONT ELEVATION



SIDE ELEVATION



REAR ELEVATION



SIDE ELEVATION

BLOCKS 5, 8 & 11

COLOUR PALETTE #1

- 01 ASPHALT SHINGLES: IKO CAMBRIDGE, WEATHERED WOOD
- 02 PREFINISHED ALUMINUM FASCIA & FLASHINGS AND WINDOWS (CHESTNUT BROWN)
- 03 BEIGE BRICK: BRAMPTON, PREMIER SIZE, BEAUPORT
- 04 HARDIE BOARD ACCENT PANEL C/W ALUMINUM TRIM PIECES (AUTUMN TAN)
- 05 SAGIPER SAGIWALL SIDING (KNOTTY MAPLE REF#79)
- 06 ALUMINUM STAIRS AND GUARDS C/W GLASS INSERTS AND CONCRETE TREADS IN METAL PANS (CHESTNUT BROWN)

MATERIALS LEGEND

- 07 ALUMINUM BALCONY RAILING c/w PICKETS @ 100mm o.c. MAX (CHESTNUT BROWN) AND OPEN RISER PT WOOD STEPS
- 08 ORNAMENTAL METAL RODS (STAINLESS STEEL)
- 09 PRE-FINISHED METAL PANELS BETWEEN WINDOWS (CHESTNUT BROWN TO MATCH WINDOWS)
- 10 ENTRY DOORS & ACCENT PANELS BENJAMIN MOORE (FIREBALL ORANGE)
- 11 GARAGE AND M&E DOORS BENJAMIN MOORE (STARDUST)

COLOUR PALETTE #2

- 01 ASPHALT SHINGLES: IKO CAMBRIDGE, CHARCOAL GREY
- 02 PREFINISHED ALUMINUM FASCIA & FLASHINGS AND WINDOWS (JELDWEN SABLE)
- 03 GRAY BRICK: BRAMPTON, PREMIER SIZE, GRAY VELOUR
- 04 HARDIE BOARD ACCENT PANEL C/W ALUMINUM TRIM PIECES (COBBLE STONE)
- 05 SAGIPER SAGIWALL SIDING (HAZEL OAK REF#6)
- 06 ALUMINUM STAIRS AND GUARDS C/W GLASS INSERTS AND CONCRETE TREADS IN METAL PANS (CHARCOAL)

MATERIALS LEGEND

- 07 ALUMINUM BALCONY RAILING c/w PICKETS @ 100mm o.c. MAX (CHARCOAL) AND OPEN RISER PT WOOD STEPS
- 08 ORNAMENTAL METAL RODS (STAINLESS STEEL)
- 09 PRE-FINISHED METAL PANELS BETWEEN WINDOWS (SABLE TO MATCH WINDOWS)
- 10 ENTRY DOORS & ACCENT PANELS BENJAMIN MOORE (SMOLDERING RED)
- 11 GARAGE AND M&E DOORS BENJAMIN MOORE (TAOS TAUPE)



BLOCKS 6

COLOUR PALETTE #1

MATERIALS LEGEND

- | | | | |
|----|---|----|---|
| 01 | ASPHALT SHINGLES: IKO CAMBRIDGE,WEATHERED WOOD | 07 | ALUMINUM BALCONY RAILING <i>c/w</i> PICKETS
@ 100mm o.c. MAX. (CHESTNUT BROWN)
AND OPEN RISER PT WOOD STEPS |
| 02 | PREFINISHED ALUMINUM FASCIA & FLASHINGS AND
WINDOWS (CHESTNUT BROWN) | 08 | ORNAMENTAL METAL RODS (STAINLESS STEEL) |
| 03 | BEIGE BRICK: BRAMPTON, PREMIER SIZE,
BEAUPORT | 09 | PRE-FINISHED METAL PANELS BETWEEN WINDOWS
(CHESTNUT BROWN TO MATCH WINDOWS) |
| 04 | HARDIE BOARD ACCENT PANEL C/W
ALUMINUM TRIM PIECES (AUTUMN TAN) | 10 | ENTRY DOORS & ACCENT PANELS
BENJAMIN MOORE (FIREBALL ORANGE) |
| 05 | SAGIPER SAGIWALL SIDING (KNOTTY MAPLE REF#79) | 11 | GARAGE AND M&E DOORS BENJAMIN MOORE
(STARDUST) |
| 06 | ALUMINUM STAIRS AND GUARDS C/W GLASS
INSERTS AND CONCRETE TREADS IN METAL PANS
(CHESTNUT BROWN) | | |

COLOUR PALETTE #2

MATERIALS LEGEND

- | | | | |
|----|---|----|---|
| 01 | ASPHALT SHINGLES: IKO CAMBRIDGE, CHARCOAL GREY | 07 | ALUMINUM BALCONY RAILING c/w PICKETS @ 100mm o.c. MAX (CHARCOAL) AND OPEN RISER PT WOOD STEPS |
| 02 | PREFINISHED ALUMINUM FASCIA & FLASHINGS AND WINDOWS (JELDWEN FASCIA) | 08 | ORNAMENTAL METAL RODS (STAINLESS STEEL) |
| 03 | GRAY BRICK: BRAMPTON, PREMIER SIZE, GRAY VELOUR | 09 | PRE-FINISHED METAL PANELS BETWEEN WINDOWS (SABLE TO MATCH WINDOWS) |
| 04 | HARDIE BOARD ACCENT PANEL C/W ALUMINUM TRIM PIECES (COBBLE STONE) | 10 | ENTRY DOORS & ACCENT PANELS BENJAMIN MOORE (SMOLDERING RED) |
| 05 | SAGIPER SAGIWALL SIDING (HAZEL OAK REF#6) | 11 | GARAGE AND M/E DOORS BENJAMIN MOORE (TAOS TAUPE) |
| 06 | ALUMINUM STAIRS AND GUARDS C/W GLASS INSERTS AND CONCRETE TREADS IN METAL PANS (CHARCOAL) | | |

IT IS THE RESPONSIBILITY OF THE APPROPRIATE CONTRACTOR TO CHECK AND VERIFY ALL DIMENSIONS ON SITE AND TO REPORT ALL ERRORS AND/OR OMISSIONS TO THE ARCHITECT.

ALL CONTRACTORS MUST COMPLY WITH ALL PERTINENT CODES AND BY-LAWS.

THIS DRAWING MAY NOT BE USED FOR CONSTRUCTION UNTIL SIGNED BY THE ARCHITECT.

DO NOT SCALE DRAWINGS.

NOTATION SYMBOLS:

-
- Diagram illustrating the components of a drawing title block:
- INDICATES DRAWING NOTES, LISTED ON EACH SHEET.** (Symbol: Circle with '00')
 - INDICATES ASSEMBLY TYPE, REFER TO TYPICAL ASSEMBLIES SCHEDULE.** (Symbol: Diamond with '00')
 - INDICATES WINDOW TYPE; REFER TO WINDOW ELEVATIONS AND DETAILS ON A900 SERIES.** (Symbol: Hexagon with '00')
 - INDICATES DOOR TYPE; REFER TO DOOR SCHEDULE AND DETAILS ON A900 SERIES.** (Symbol: Oval with '000')
 - DETAIL NUMBER** (Symbol: Circle with '00')
 - TITLE** (Symbol: Circle with '00')
 - SCALE** (Symbol: Circle with '00')
 - DETAIL REFERENCE PAGE** (Symbol: Circle with '00')
 - DETAIL CROSS REFERENCE PAGE** (Symbol: Circle with '00')

GENERAL NOTES:

- | | |
|---|---|
| A | REFER TO TYPICAL ASSEMBLIES SHEET FOR WALL, PARTITION, ROOF CEILING & FLOOR TYPES. |
| B | FOR DOOR TYPES AND HARDWARE REQUIREMENTS REFER TO DOOR SCHEDULE ON A901 SERIES. |
| C | ALL INTERIOR DIMENSIONS ARE TAKEN FROM THE FACE OF STUD |
| D | ALL EXTERIOR DIMENSIONS ARE TAKEN FROM THE FACE OF STUD |
| E | ALL EXTERIOR WALLS ARE TO BE TYPE 'W1' UNLESS NOTED OTHER WISE |
| F | ALL INTERIOR PARTITIONS ARE TO BE TYPE 'P1' UNLESS NOTED OTHER WISE. |
| G | ALL REINFORCED CONCRETE SUSPENDED SLABS, CORNERS & BEAMS HAVE A MIN. FRR OF 1% HRS (AS DETERMINED BY CBC SB-2) UNLESS OTHERWISE STATED. |

[illegible]

5	ISSUED FOR SITE PLAN CONTROL PHASE 2	Dec. 06,18
4	ISSUED FOR SITE PLAN CONTROL PHASE 2	Oct. 31,18
3	ISSUED FOR MINOR VARIANCE BLOCK 6 & 7	Apr 10,18
2	ISSUED FOR SITE PLAN CONTROL REVISED CONCEPT	Nov 13,17
1	ISSUED FOR SITE PLAN CONTROL	June 06,17
No.	DESCRIPTION	DATE

REVISIONS

ARCHITECT SEAL:



CLIENT:

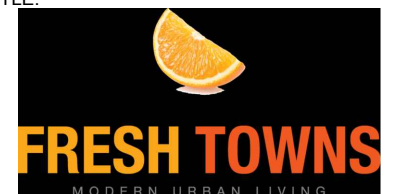
NORTH ARROW:



ARCHITECT

rla / architecture
56 Beech Street, Ottawa, Ontario K1S 3J6
t.613.724.9932 f.613.724.1209 www.roderickklahey.ca

PROJECT TITLE: _____



OTTAWA ONTARIO

BLOCK 6

BUILDING ELEVATIONS

DRAWN:

RV

100% 100% 100% 100% 100%

SCALE:

CHECKED:

LL

© 2006 The Authors
Journal compilation © 2006 Blackwell Publishing Ltd

SHEET No. _____

A-08



BLOCKS 7

COLOUR PALETTE #1

- 01 ASPHALT SHINGLES: IKO CAMBRIDGE, WEATHERED WOOD
- 02 PREFINISHED ALUMINUM FASCIA & FLASHINGS AND WINDOWS (CHESTNUT BROWN)
- 03 BEIGE BRICK: BRAMPTON, PREMIER SIZE, BEAUPORT
- 04 HARDIE BOARD ACCENT PANEL C/W ALUMINUM TRIM PIECES (AUTUMN TAN)
- 05 SAGIPER SAGIWALL SIDING (KNOTTY MAPLE REF#79)
- 06 ALUMINUM STAIRS AND GUARDS C/W GLASS INSERTS AND CONCRETE TREADS IN METAL PANS (CHESTNUT BROWN)

MATERIALS LEGEND

- | | |
|----|---|
| 07 | ALUMINUM BALCONY RAILING c/w PICKETS
@ 100mm o.c. MAX (CHESTNUT BROWN)
AND OPEN RISER PT WOOD STEPS |
| 08 | ORNAMENTAL METAL RODS (STAINLESS STEEL) |
| 09 | PRE-FINISHED METAL PANELS BETWEEN WINDOWS
(CHESTNUT BROWN TO MATCH WINDOWS) |
| 10 | ENTRY DOORS & ACCENT PANELS
BENJAMIN MOORE (FIREBALL ORANGE) |
| 11 | GARAGE AND M&E DOORS BENJAMIN MOORE
(STARDUST) |

COLOUR PALETTE #2

- | | |
|----|---|
| 01 | ASPHALT SHINGLES: IKO CAMBRIDGE, CHARCOAL GREY |
| 02 | PREFINISHED ALUMINUM FASCIA & FLASHINGS AND WINDOWS (JELDWEN SABLE) |
| 03 | GRAY BRICK: BRAMPTON, PREMIER SIZE, GRAY VELOUR |
| 04 | HARDIE BOARD ACCENT PANEL C/W ALUMINUM TRIM PIECES (COBBLE STONE) |
| 05 | SAGIPER SAGIWALL SIDING (HAZEL OAK REF#6) |
| 06 | ALUMINUM STAIRS AND GUARDS C/W GLASS INSERTS AND CONCRETE TREADS IN METAL PANS (CHARCOAL) |

MATERIALS LEGEND

- | | |
|----|---|
| 07 | ALUMINUM BALCONY RAILING c/w PICKETS
@ 100mm o.c. MAX (CHARCOAL)
AND OPEN RISER PT WOOD STEPS |
| 08 | ORNAMENTAL METAL RODS (STAINLESS STEEL) |
| 09 | PRE-FINISHED METAL PANELS BETWEEN WINDOWS
(SABLE TO MATCH WINDOWS) |
| 10 | ENTRY DOORS & ACCENT PANELS
BENJAMIN MOORE (SMOLDERING RED) |
| 11 | GARAGE AND M&E DOORS BENJAMIN MOORE
(TAOS TAUPE) |

IT IS THE RESPONSIBILITY OF THE APPROPRIATE CONTRACTOR TO CHECK AND VERIFY ALL DIMENSIONS ON SITE AND TO REPORT ALL ERRORS AND/OR OMISSIONS TO THE ARCHITECT.

ALL CONTRACTORS MUST COMPLY WITH ALL PERTINENT CODES AND BY-LAWS.

THIS DRAWING MAY NOT BE USED FOR CONSTRUCTION UNTIL SIGNED BY THE ARCHITECT.

DO NOT SCALE DRAWINGS.

NOTATION SYMBOLS:

-
- Diagram illustrating the components of a drawing title block:
- INDICATES DRAWING NOTES, LISTED ON EACH SHEET.** (Symbol: Circle with '00')
 - INDICATES ASSEMBLY TYPE, REFER TO TYPICAL ASSEMBLIES SCHEDULE.** (Symbol: Diamond with '00')
 - INDICATES WINDOW TYPE; REFER TO WINDOW ELEVATIONS AND DETAILS ON A900 SERIES.** (Symbol: Hexagon with '00')
 - INDICATES DOOR TYPE; REFER TO DOOR SCHEDULE AND DETAILS ON A900 SERIES.** (Symbol: Oval with '000')
 - DETAIL NUMBER** (Symbol: Circle with '00')
 - TITLE** (Symbol: Circle with '00')
 - SCALE** (Symbol: Circle with '00')
 - DETAIL REFERENCE PAGE** (Symbol: Circle with '00')
 - DETAIL CROSS REFERENCE PAGE** (Symbol: Circle with '00')

GENERAL NOTES:

- | | |
|---|---|
| A | REFER TO TYPICAL ASSEMBLIES SHEET FOR WALL, PARTITION, ROOF CEILING & FLOOR TYPES. |
| B | FOR DOOR TYPES AND HARDWARE REQUIREMENTS REFER TO DOOR SCHEDULE ON A901 SERIES. |
| C | ALL INTERIOR DIMENSIONS ARE TAKEN FROM THE FACE OF STUD |
| D | ALL EXTERIOR DIMENSIONS ARE TAKEN FROM THE FACE OF STUD |
| E | ALL EXTERIOR WALLS ARE TO BE TYPE 'W1' UNLESS NOTED OTHER WISE |
| F | ALL INTERIOR PARTITIONS ARE TO BE TYPE 'P1' UNLESS NOTED OTHER WISE. |
| G | ALL REINFORCED CONCRETE SUSPENDED SLABS, CORNERS & BEAMS HAVE A MIN. FRR OF 1% HRS (AS DETERMINED BY CBC SB-2) UNLESS OTHERWISE STATED. |

[illegible]

5	ISSUED FOR SITE PLAN CONTROL PHASE 2	Dec. 06,18
4	ISSUED FOR SITE PLAN CONTROL PHASE 2	Oct. 31,18
3	ISSUED FOR MINOR VARIANCE BLOCK 6 & 7	Apr 10,18
2	ISSUED FOR SITE PLAN CONTROL REVISED CONCEPT	Nov 13,17
1	ISSUED FOR SITE PLAN CONTROL	June 06,17
No.	DESCRIPTION	DATE

REVISIONS:

ARCHITECT SEAL:



NORTH ARROW:

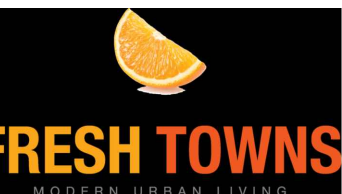
CLIENT



ARCHITECT

rla / architecture
56 Beech Street, Ottawa, Ontario K1S 3J6
t.613.724.9932 f.613.724.1209 www.rodericklahey.ca

PROJECT TITLE:



2710 DRAPER AVENUE
OTTAWA ONTARIO

SHEET TITLE

BLOCK 7

BUILDING ELEVATIONS

DRAWN:

RV

SCALE:

1 : 100

CHECKED:

L

APPENDIX

A-09