

OTTAWA-CARLETON  
DISTRICT SCHOOL BOARD

1 0 2018/---/--- ISSUED FOR

ISSUE NO. REV. NO. DATE ISSUE

LES IDEES, CONCEPTS, DISPOSITIONS ET PLANS MONTRÉS OU REPRÉSENTÉS PAR CE DESSIN APPARTIENNENT À EDWARD J. CUHACI AND ASSOCIATES ARCHITECTS INC. ET ONT ÉTÉ CRÉÉS, ET DÉVELOPPÉS POUR ÊTRE UTILISÉS DANS LE CADRE DU PRÉSENT PROJET. ILS NE DOIVENT PAS ÊTRE UTILISÉS À D'AUTRES FINS NI COMMUNIQUÉS À QUI QUE CE SOIT SANS LA PERMISSION ÉCRITE DE EDWARD J. CUHACI AND ASSOCIATES ARCHITECTS INC.

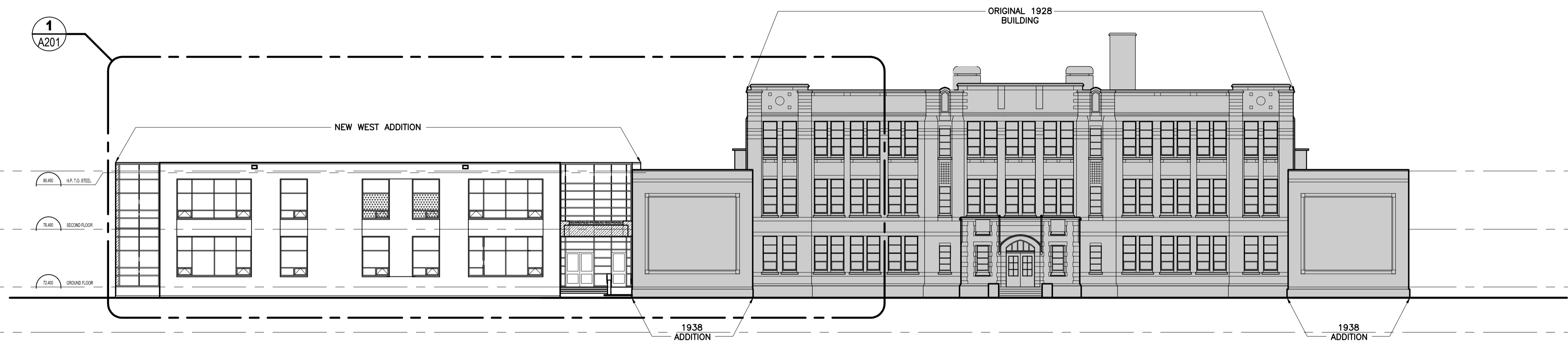
L'ARCHITECTE DÉCLINE TOUTE RESPONSABILITÉ DÉCOULANT DE PROBLÈMES FAISANT SUITE AU NON RESPECT DES PLANS ET DEVIS OU DE L'INTENTION DU CONCEPT QU'ILS TRANSMETTENT, OU DE TOUTS PROBLÈMES POUVANT RÉSULTER DU DÉFAUT DE TIERS D'OBTENIR OU DE SUIVRE LES INSTRUCTIONS DE L'ARCHITECTE RELATIVEMENT AUX ERREURS, OMISSIONS, INCOHÉRENCES, AMBIGUITÉS OU CONTRADICTIONS ALLEGUÉS.

L'ENTREPRENEUR DOIT VÉRIFIER TOUTES LES DIMENSIONS SUR PLACE ET INFORMER L'ARCHITECTE DE TOUT ÉCART AVANT LE DÉBUT DES TRAVAUX. NE PAS MESURER LES DESSINS À L'ÉCHELLE.

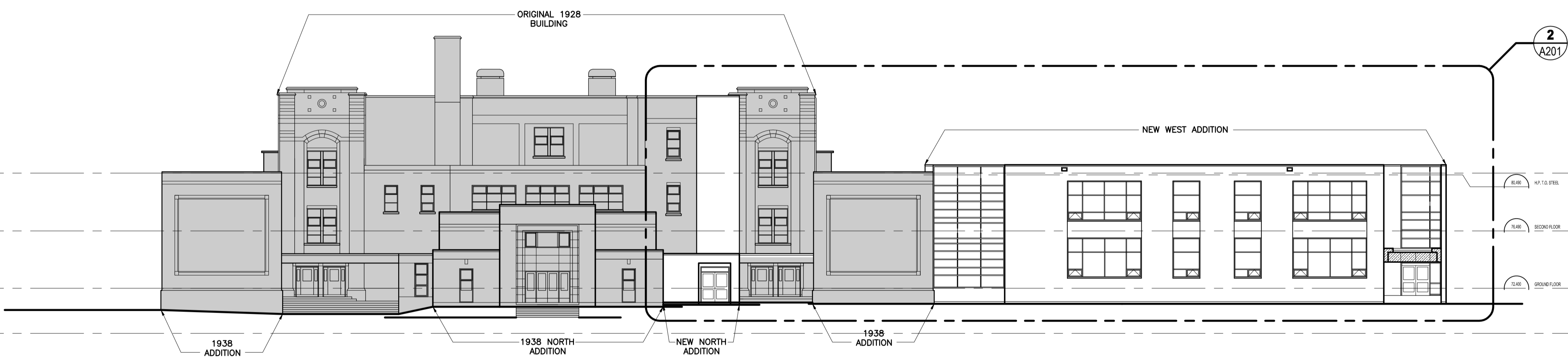
ALL IDEAS, DESIGNS, ARRANGEMENTS, AND PLANS INDICATED OR REPRESENTED BY THIS DRAWING ARE OWNED BY AND THE PROPERTY OF EDWARD J. CUHACI AND ASSOCIATES INC. AND WERE CREATED, EVOLVED, AND DEVELOPED FOR USE ON AND IN CONNECTION WITH THE SPECIFIED PROJECT. NONE OF THE IDEAS, DESIGNS, ARRANGEMENTS OR PLANS SHALL BE USED BY OR DISCLOSED TO ANY PERSON, FIRM, OR CORPORATION FOR ANY PURPOSE WHATSOEVER WITHOUT THE WRITTEN PERMISSION OF EDWARD J. CUHACI AND ASSOCIATES INC.

THE ARCHITECT WAVES ANY AND ALL RESPONSIBILITY AND LIABILITY FOR PROBLEMS WHICH ARISE FROM FAILURE TO FOLLOW THESE PLANS, SPECIFICATIONS, AND THE DESIGN INTENT THEY CONVEY, OR FOR PROBLEMS WHICH ARISE FROM OTHERS' FAILURE TO OBTAIN AND/OR FOLLOW THE ARCHITECT'S GUIDANCE WITH RESPECT TO ANY ERRORS, OMISSIONS, INCONSISTENCIES, AMBIGUITIES OR CONFLICTS WHICH ARE ALLEGED.

CONTRACTOR TO VERIFY ALL DIMENSIONS AND NOTIFY THE ARCHITECT OF ANY DISCREPANCIES BEFORE WORK COMMENCES. DO NOT SCALE DRAWINGS



**1** SOUTH ELEVATION  
A200 1:200



**2** NORTH ELEVATION  
A200 1:200

**EDWARD J. CUHACI & ASSOCIATES ARCHITECTS Inc.**  
171 Slater St. Suite 100, Ottawa, Ontario, K1P 5H7  
Fax: (613) 236-1944 Telephone: (613) 236-7135 E-mail: info@cuhaci.com

PROJECT TITLE/TITRE DU PROJET  
**ELMDALE PUBLIC SCHOOL  
ADDITION AND RENOVATION**  
49 IONA STREET, OTTAWA, ON  
K1Y 3L9

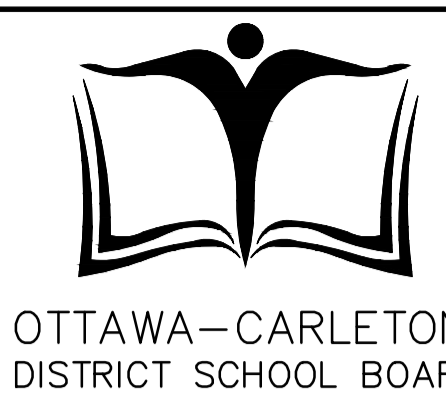
OTTAWA-CARLETON DISTRICT SCHOOL BOARD  
133 GREENBANK ROAD  
NEPEAN, ONTARIO, K2H 6L3

DRAWING TITLE/TITRE DU DESSIN  
**ELEVATIONS**

SCALE ECHELLE	AS SHOWN	PROJ. No 1853	ISSUE No 1	REV. No 0
DRAWN BY DESSINÉ PAR	EP	DRAWING/DESSIN		
CHECKED BY VÉRIFIÉ PAR	JJ	<b>A200</b>		
DATE	DECEMBER 2018			

ACAD FILE/FICHIER: 1853-A200 SPC.dwg

D07-XX-XX-XX-XXXX



ISSUE NO.	REV. NO.	DATE	ISSUE
1	0	2018/12/17	ISSUED FOR SITE PLAN CONTROL

LES IDEES, CONCEPTS, DISPOSITIONS ET PLANS MONTRES OU REPRESENTES PAR CE DESSIN APPARTIENNENT A EDWARD J. CUHACI AND ASSOCIATES ARCHITECTS INC. ET ONT ETE CREEES, ET DEVELOPPEES POUR ETRE UTILISEES DANS LE CADRE DU PRESENT PROJET. ILS NE DOIVENT PAS ETRE UTILISES A D'AUTRES FINS NI COMMUNIQUEES A QUI QUE CE SOIT SANS LA PERMISSION ECRITE DE EDWARD J. CUHACI AND ASSOCIATES ARCHITECTS INC.

L'ARCHITECTE DECLINE TOUTE RESPONSABILITE DECULANT DE PROBLEMES FAISANT SUITE AU NON RESPECT DES PLANS ET DEVIS OU DE L'INTENTION DU CONCEPT QU'ILS TRANSMETTENT, OU DE TOUTS PROBLEMES POUVANT RESULTER DU DEFAUT DE TIERS D'OBTENIR OU DE SUIVRE LES INSTRUCTIONS DE L'ARCHITECTE RELATIVEMENT AUX ERREURS, OMISSIONS, INCOHERENCES, AMBIGUITES OU CONTRADICTIONS ALLEGUES.

L'ENTREPRENEUR DOIT VERIFIER TOUTES LES DIMENSIONS SUR PLACE ET INFORMER L'ARCHITECTE DE TOUT ECART AVANT LE DEBUT DES TRAVAUX. NE PAS MESURER LES DESSINS A L'ECHELLE.

ALL IDEAS, DESIGNS, ARRANGEMENTS, AND PLANS INDICATED OR REPRESENTED BY THIS DRAWING ARE OWNED BY AND THE PROPERTY OF EDWARD J. CUHACI AND ASSOCIATES INC. AND WERE CREATED, EVOLVED, AND DEVELOPED FOR USE ON AND IN CONNECTION WITH THE SPECIFIED PROJECT. NONE OF THE IDEAS, DESIGNS, ARRANGEMENTS OR PLANS SHALL BE USED BY OR DISCLOSED TO ANY PERSON, FIRM, OR CORPORATION FOR ANY PURPOSE WHATSOEVER WITHOUT THE WRITTEN PERMISSION OF EDWARD J. CUHACI AND ASSOCIATES INC.

THE ARCHITECT WAIVES ANY AND ALL RESPONSIBILITY AND LIABILITY FOR PROBLEMS WHICH ARISE FROM FAILURE TO FOLLOW THESE PLANS, SPECIFICATIONS, AND THE DESIGN INTENT THEY CONVEY, OR FOR PROBLEMS WHICH ARISE FROM OTHERS' FAILURE TO OBTAIN AND/OR FOLLOW THE ARCHITECT'S GUIDANCE WITH RESPECT TO ANY ERRORS, OMISSIONS, INCONSISTENCIES, AMBIGUITIES OR CONFLICTS WHICH ARE ALLEGED.

CONTRACTOR TO VERIFY ALL DIMENSIONS AND NOTIFY THE ARCHITECT OF ANY DISCREPANCIES BEFORE WORK COMMENCES. DO NOT SCALE DRAWINGS

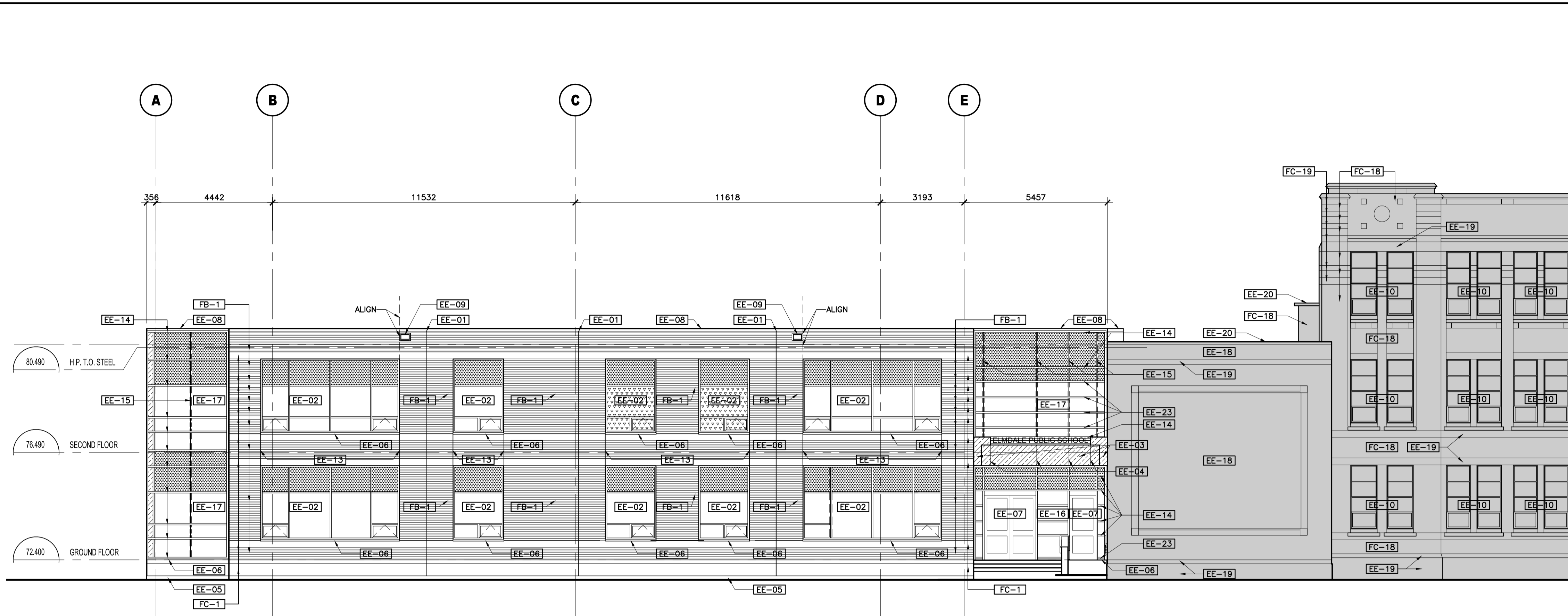
ELEVATION LEGEND

- EXISTING BUILDING
- TILT-UP CONCRETE PANEL WITH BRICK VENEER, REFER TO PLANS
- 90mm BRICK VENEER, REFER TO PLANS
- COMPOSITE ALUMINUM PANEL
- INSULATED SPANDEL PANEL GLAZING WITH INSULATED BACK PAN BEHIND IN ALUMINUM CURTAIN WALL
- VISION INSULATED GLASS UNITS IN ALUMINUM CURTAIN WALL
- TRANSLUCENT INSULATED GLASS UNIT IN CURTAIN WALL
- TILT-UP PANEL BRICK VENEER TYPE 1
- 90mm BRICK VENEER TYPE 2
- 90mm BRICK VENEER TYPE 3
- TILT-UP PANEL CONCRETE ACCENT BAND TYPE 1

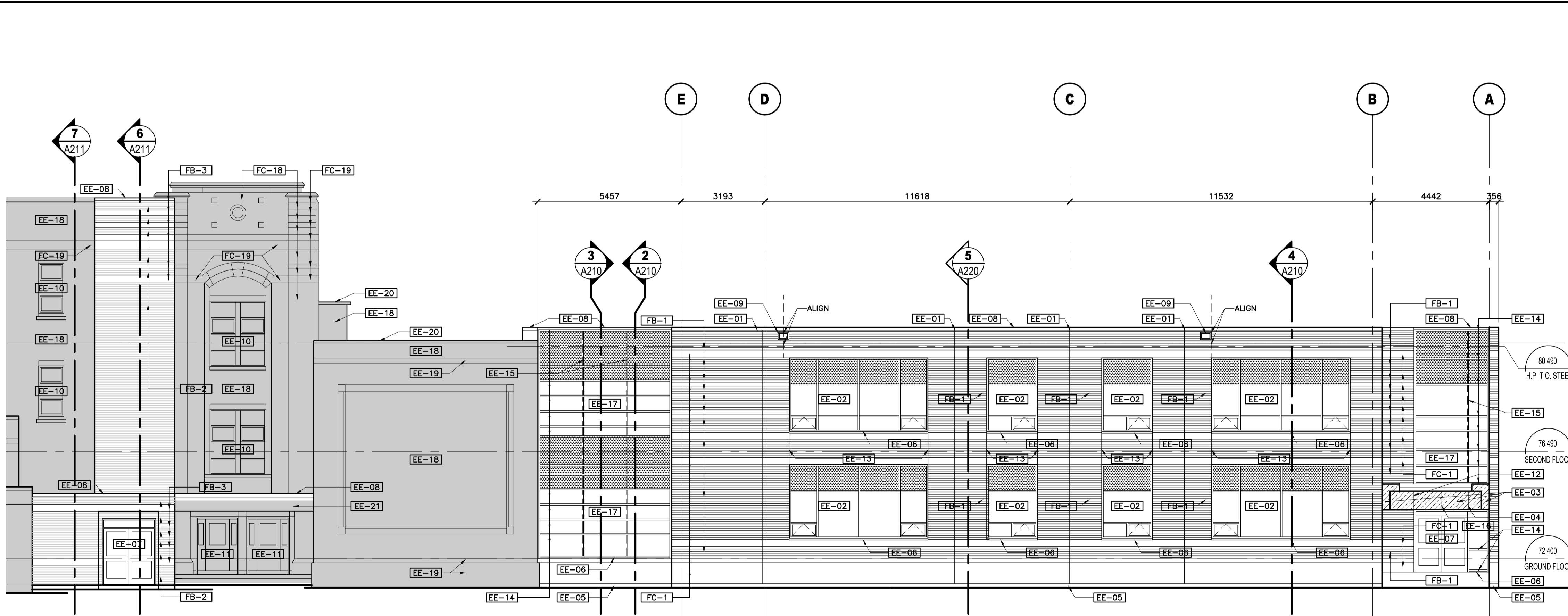
ELEVATION NOTES

- EE-01 19mm CONTROL JOINT BETWEEN TILT-UP PANELS
- EE-02 TYPE 1 CURTAIN WALL SYSTEM
- EE-03 COMPOSITE ALUMINUM PANEL
- EE-04 COMPOSITE METAL PANELS JOINT, ALIGN WITH CENTER OF CURTAIN WALL MULLION.
- EE-05 EXPOSED FOUNDATION WALL - ARCHITECTURAL CONCRETE FINISH
- EE-06 ALUMINUM WINDOW SILL
- EE-07 ALUMINUM SWING DOOR
- EE-08 PREFINISHED METAL CAP FLASHING
- EE-09 ROOF OVERFLOW SCUPPER IN TILT-UP CONCRETE PANEL WITH BRICK VENEER. REFER TO DETAIL
- EE-10 EXISTING WINDOW TO REMAIN
- EE-11 EXISTING DOOR TO REMAIN
- EE-12 COMPOSITE METAL PANEL JOINT, ALIGN WITH BRICK CORNER BEYOND.
- EE-13 TILT-UP PANEL RECESS. REFER TO PLAN AND SECTION DETAILS.
- EE-14 19mm CURTAIN WALL MULLION CAP.
- EE-15 CURTAIN WALL STRUCTURAL SILICONE JOINT
- EE-16 CURTAIN WALL SYSTEM TYPE 2
- EE-17 CURTAIN WALL SYSTEM TYPE 3
- EE-18 EXISTING BRICK TO REMAIN
- EE-19 EXISTING CONCRETE TO REMAIN
- EE-20 EXISTING METAL CAP FLASHING TO REMAIN.
- EE-21 EXISTING CANOPY TO REMAIN
- EE-22 EXISTING CORRUGATED FASCIA TO REMAIN
- EE-23 63.5mm CURTAIN WALL MULLION CAP.
- EE-24 69.85mm CURTAIN WALL MULLION CAP.

REFER TO MECHANICAL AND ELECTRICAL FOR ADDITIONAL INFORMATION.



1 SOUTH ELEVATION  
A201 1:100



2 NORTH ELEVATION  
A201 1:100

**EDWARD J. CUHACI & ASSOCIATES ARCHITECTS Inc.**  
171 Slater St. Suite 100, Ottawa, Ontario, K1P 5H7  
Fax: (613) 236-1944 Telephone: (613) 236-7135 E-mail: info@cuhaci.com

PROJECT TITLE/TITRE DU PROJET  
**ELMDALE PUBLIC SCHOOL ADDITION AND RENOVATION**  
49 IONA STREET, OTTAWA, ON K1Y 3L9  
OTTAWA-CARLETON DISTRICT SCHOOL BOARD  
133 GREENBANK ROAD  
NEPEAN, ONTARIO, K2H 6L3

ELEVATIONS

SCALE ECHELLE	AS SHOWN	PROJ. No. 1853	ISSUE No. 1	REV. No. 0
DRAWN BY DESSINE PAR	EP	DRAWING/DESSIN		
CHECKED BY VERIFIE PAR	JJ	<b>A201</b>		
DATE	DECEMBER 2018	ACAD FILE/FICHER: 1853-A201 SPC.dwg		

D07-XX-XX-XXXX



1	0	2018/12/17	ISSUED FOR SITE PLAN CONTROL
ISSUE NO.	REV. NO.	DATE	ISSUE

LES IDEES, CONCEPTS, DISPOSITIONS ET PLANS MONTRÉS OU REPRÉSENTÉS PAR CE DESSIN APPARTIENNENT À EDWARD J. CUHACI AND ASSOCIATES ARCHITECTS INC. ET ONT ÉTÉ CRÉÉS, ET DÉVELOPPÉS POUR ÊTRE UTILISÉS DANS LE CADRE DU PRÉSENT PROJET. ILS NE DOIVENT PAS ÊTRE UTILISÉS À D'AUTRES FINS NI COMMUNIQUÉS À QUI QUE CE SOIT SANS LA PERMISSION ÉCRITE DE EDWARD J. CUHACI AND ASSOCIATES ARCHITECTS INC.

L'ARCHITECTE DÉCLINE TOUTE RESPONSABILITÉ DÉCOULANT DE PROBLÈMES FAISANT SUITE AU NON RESPECT DES PLANS ET DEVIS OU DE L'INTENTION DU CONCEPT QU'ILS TRANSMETTENT, OU DE TOUS PROBLÈMES POUVANT RÉSULTER DU DÉFAUT DE TIERS D'OBTENIR OU DE SUIVRE LES INSTRUCTIONS DE L'ARCHITECTE RELATIVEMENT AUX ERREURS, OMISSIONS, INCOHÉRENCES, AMBIGUITÉS OU CONTRADICTIONS ALLÉGUÉES.

L'ENTREPRENEUR DOIT VÉRIFIER TOUTES LES DIMENSIONS SUR PLACE ET INFORMER L'ARCHITECTE DE TOUT ÉCART AVANT LE DÉBUT DES TRAVAUX. NE PAS MESURER LES DESSINS À L'ÉCHELLE.

ALL IDEAS, DESIGNS, ARRANGEMENTS, AND PLANS INDICATED OR REPRESENTED BY THIS DRAWING ARE OWNED BY AND THE PROPERTY OF EDWARD J. CUHACI AND ASSOCIATES INC. AND WERE CREATED, EVOLVED, AND DEVELOPPED FOR USE ON AND IN CONNECTION WITH THE SPECIFIED PROJECT. NONE OF THE IDEAS, DESIGNS, ARRANGEMENTS OR PLANS SHALL BE USED BY OR DISCLOSED TO ANY PERSON, FIRM, OR CORPORATION FOR ANY PURPOSE WHATSOEVER WITHOUT THE WRITTEN PERMISSION OF EDWARD J. CUHACI AND ASSOCIATES INC.

THE ARCHITECT WAIVES ANY AND ALL RESPONSIBILITY AND LIABILITY FOR PROBLEMS WHICH ARISE FROM FAILURE TO FOLLOW THESE PLANS, SPECIFICATIONS, AND THE DESIGN INTENT THEY CONVEY, OR FOR PROBLEMS WHICH ARISE FROM OTHERS' FAILURE TO OBTAIN AND/OR FOLLOW THE ARCHITECT'S GUIDANCE WITH RESPECT TO ANY ERRORS, OMISSIONS, INCONSISTENCIES, AMBIGUITIES OR CONFLICTS WHICH ARE ALLEGED.

CONTRACTOR TO VERIFY ALL DIMENSIONS AND NOTIFY THE ARCHITECT OF ANY DISCREPANCIES BEFORE WORK COMMENCES. DO NOT SCALE DRAWINGS

### ELEVATION LEGEND

- EXISTING BUILDING
- TILT-UP CONCRETE PANEL WITH BRICK VENEER, REFER TO PLANS
- 90mm BRICK VENEER, REFER TO PLANS
- COMPOSITE ALUMINUM PANEL
- INSULATED SPANDEL PANEL GLAZING WITH INSULATED BACK PAN BEHIND IN ALUMINUM CURTAIN WALL
- VISION INSULATED GLASS UNITS IN ALUMINUM CURTAIN WALL
- TRANSLUCENT INSULATED GLASS UNIT IN CURTAIN WALL
- TILT-UP PANEL BRICK VENEER TYPE 1
- 90mm BRICK VENEER TYPE 2
- 90mm BRICK VENEER TYPE 3
- TILT-UP PANEL CONCRETE ACCENT BAND TYPE 1

### ELEVATION NOTES

- EE-01 19mm CONTROL JOINT BETWEEN TILT-UP PANELS
- EE-02 TYPE 1 CURTAIN WALL SYSTEM
- EE-03 COMPOSITE ALUMINUM PANEL
- EE-04 COMPOSITE METAL PANELS JOINT, ALIGN WITH CENTER OF CURTAIN WALL MULLION.
- EE-05 EXPOSED FOUNDATION WALL - ARCHITECTURAL CONCRETE FINISH
- EE-06 ALUMINUM WINDOW SILL
- EE-07 ALUMINUM SWING DOOR
- EE-08 PREFINISHED METAL CAP FLASHING
- EE-09 ROOF OVERFLOW SCUPPER IN TILT-UP CONCRETE PANEL WITH BRICK VENEER. REFER TO DETAIL
- EE-10 EXISTING WINDOW TO REMAIN
- EE-11 EXISTING DOOR TO REMAIN
- EE-12 COMPOSITE METAL PANEL JOINT, ALIGN WITH BRICK CORNER BEYOND.
- EE-13 TILT-UP PANEL RECESS. REFER TO PLAN AND SECTION DETAILS.
- EE-14 19mm CURTAIN WALL MULLION CAP.
- EE-15 CURTAIN WALL STRUCTURAL SILICONE JOINT
- EE-16 CURTAIN WALL SYSTEM TYPE 2
- EE-17 CURTAIN WALL SYSTEM TYPE 3
- EE-18 EXISTING BRICK TO REMAIN
- EE-19 EXISTING CONCRETE TO REMAIN
- EE-20 EXISTING METAL CAP FLASHING TO REMAIN.
- EE-21 EXISTING CANOPY TO REMAIN
- EE-22 EXISTING CORRUGATED FASCIA TO REMAIN
- EE-23 63.5mm CURTAIN WALL MULLION CAP.
- EE-24 69.85mm CURTAIN WALL MULLION CAP.

REFER TO MECHANICAL AND ELECTRICAL FOR ADDITIONAL INFORMATION.

**EDWARD J. CUHACI & ASSOCIATES ARCHITECTS Inc.**  
 171 Slater St. Suite 100, Ottawa, Ontario, K1P 5H7  
 Fax: (613) 236-1944 Telephone: (613) 236-7135 E-mail: info@cuhaci.com

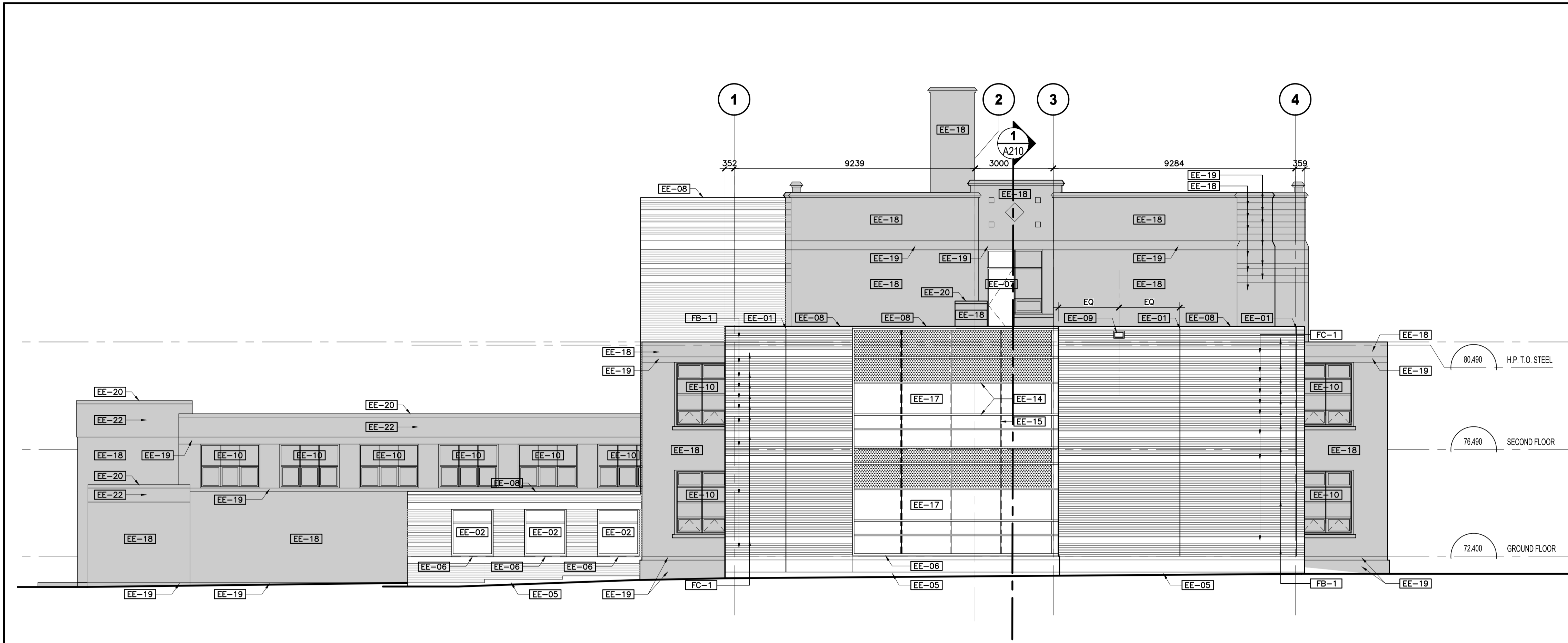
PROJECT TITLE/TITRE DU PROJET  
**ELMDALE PUBLIC SCHOOL ADDITION AND RENOVATION**  
 49 IONA STREET, OTTAWA, ON K1Y 3L9

OTTAWA-CARLETON DISTRICT SCHOOL BOARD  
 133 GREENBANK ROAD  
 NEPEAN, ONTARIO, K2H 6L3

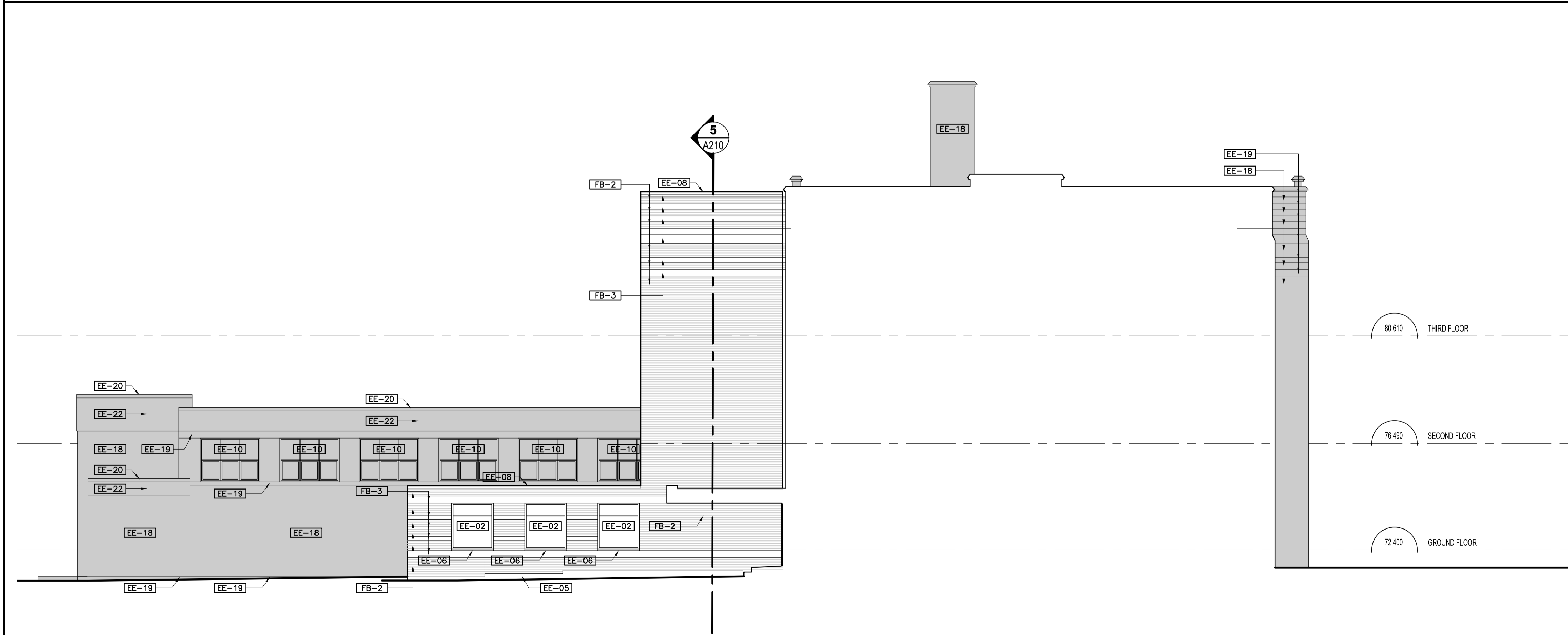
### ELEVATIONS

SCALE ÉCHELLE	AS SHOWN	PROJ. No 1853	ISSUE No 1	REV. No 0
DRAWN BY DESSINÉ PAR	EP	DRAWING/DESSIN		
CHECKED BY VÉRIFIÉ PAR	JJ	<b>A202</b>		
DATE	DECEMBER 2018			

ACAD FILE/FICHIER: 1853-A202 SPC.dwg



**1 WEST ELEVATION**  
A202 1:100



**2 WEST ELEVATION - ELEVATOR ADDITION**  
A202 1:100

D07-XX-XX-XXXX