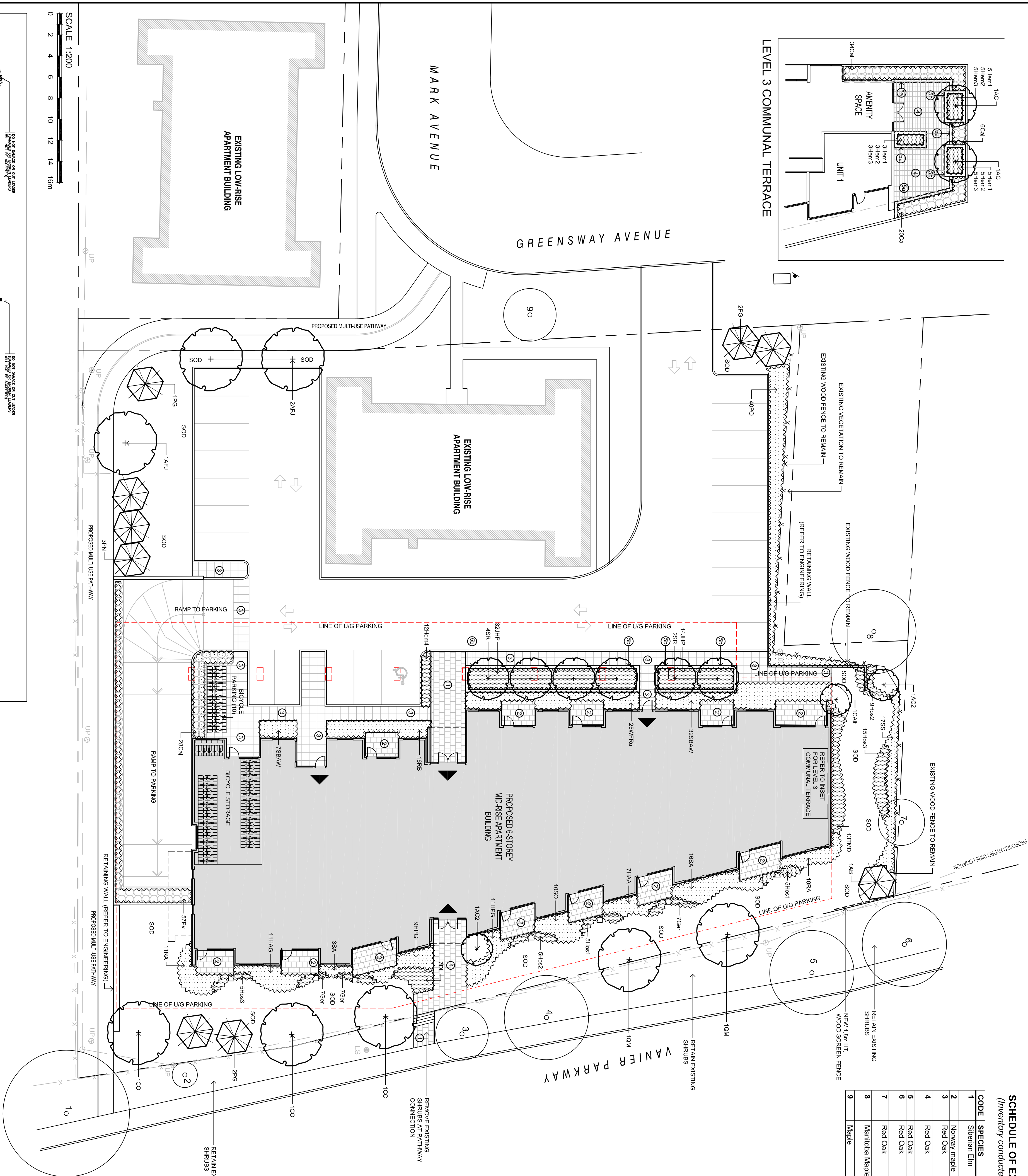


(Inventory conducted May 1, 2018 and July 17, 2018)

CODE	SPECIES	SIZE (dian cm)	CULTIVATION / TREATMENT / REMARKS
1	Shieria Elm	47	City tree / poor condition -10s stom damage - invasive species / <u>retain</u> / protect
2	Norway maple	14	City tree / good condition / <u>retain</u> / protect
3	Red Oak	27	City tree / fair condition - asymmetrical crown / <u>retain</u> / protect
4	Red Oak	38	City tree / fair condition - asymmetrical crown / <u>retain</u> / protect
5	Red Oak	36	City tree / good condition / <u>retain</u> / protect
6	Red Oak	34	City tree / fair condition - asymmetrical crown / <u>retain</u> / protect
7	Red Oak	22	Adjacent Property / fair condition - asymmetrical crown / <u>retain</u> / protect
8	Manitoba Maple (partially elied)	38	Adjacent Property / poor condition - asymmetrical-leaving -invasive species/ <u>retain</u> / protect
9	Maple	22	Good / <u>retain</u> / protect

[illegible]

LEVEL 3 COMMUNAL TERRACE



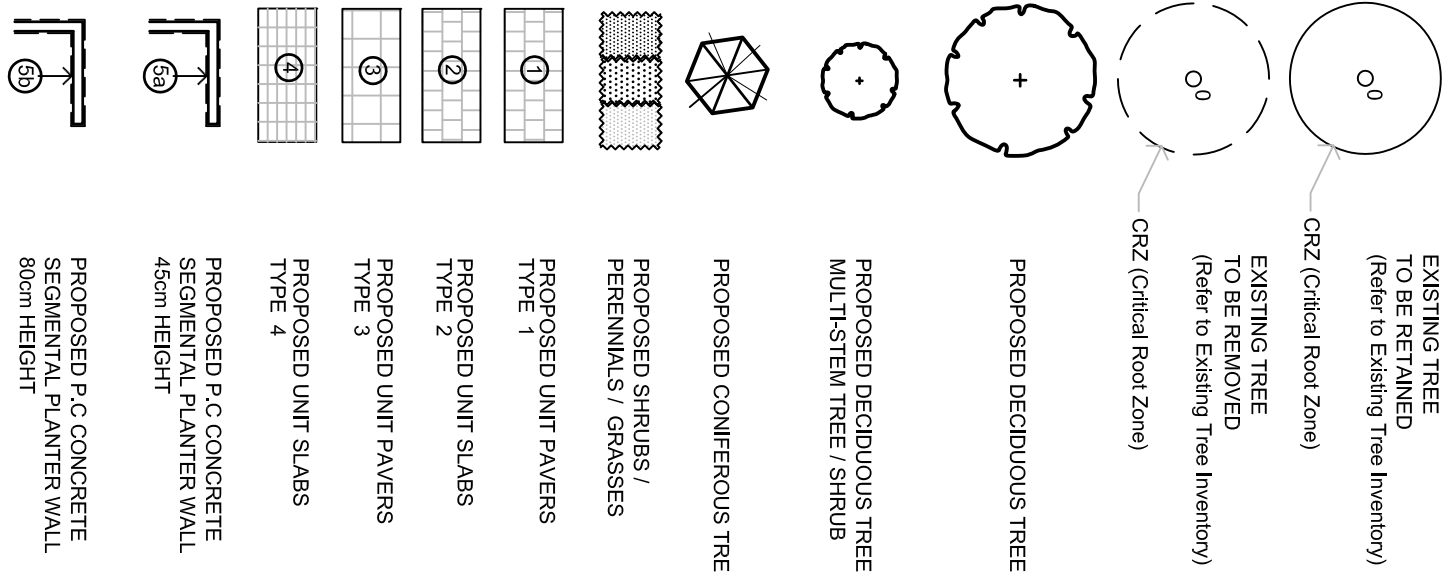
PLANT MATERIAL SCHEDULE

ID	CODE	BOTANICAL NAME	COMMON NAME	QTY.	SIZE	REMARKS
DECIDUOUS TREES	AC	ALNUS INCANDESCENS	SHANOUK SERRACERRY	3	50cm sal	B&S single stem
	AG	ALNUS GLABRA	ALUMINUM WHITE WAX	3	50cm sal	B&S single stem
	AO	CELASTRUS SCANDENS	COMMON JACARANDA	3	60cm sal	B&S single stem
	CM	QUERUS MACROCARPA	BLACK OAK	3	60cm sal	B&S single stem
	OM	QUERUS PETIOLATA	MYR OAK	6	50cm sal	B&S single stem
	SLK	SLYR	SLYR	1	180 cm Nt	B&S
	AB	ABIES DALMANEA	BALSA FIR	1	180 cm Nt	B&S
	PN	PINUS NIGRA	AUSTRIAN PINE	1	180 cm Nt	B&S
	NG	NOF		1	180 cm Nt	B&S
	NG	NOF		1	180 cm Nt	B&S
DECIDUOUS SHRUBS	ACZ	AMELANCHIER CANADENSIS	DOUGL. SERVICEBERRY	2	150cm Nt	B&S multi-stem
	DI	DIQUETIA	DIQUETIA	2	150cm Nt	B&S multi-stem
	DL	DEUTEREA LONICERA	SHAW DOWDGE/DOCKLE	7	50cm ht	100cm ac
	HAA	HYDRANGEA HYBRIDSCENS	ANNABELL HYDRANGEA	7	50cm ht	100cm ac
	HAG	HYDRANGEA ARBORESCENS	SNOWHILL HYDRANGEA	11	50cm ht	100cm ac
	GR	GRANDIFLORA				
	HP	HYDRANGEA PANDICULATA	PEE GEE HYDRANGEA	20	50cm ht	100cm ac
	PO	PHYSCALIPS POLI-FOLIUS	COMMON WINEBARB	40	50cm ht	100cm ac
	RA	RIBES AMERICANA	WILD BLACK CURRANT	21	50cm ht	100cm ac
	SA	SYMPLOCARPUS ALBUS	ANOTHER	19	50cm ht	100cm ac
CONIFEROUS SHRUBS	SAW	SPINIFEA BUNDAIA ANTHONY	ANTHONY VATERBER SPINIFA	38	50cm ht	100cm ac
	SO	SYLBERGICAPRIS	CORALBERRY	10	50cm ht	100cm ac
	SS	SORBARIA SORBIFOLIA	FALSE SPIRDEA	17	50cm ht	100cm ac
	TM	THUNBERGIA VIKTORIA	VIKTORIA	20	50cm ht	100cm ac
	JHP	JUNIPERUS HORIZONTALIS	COMPACT ANOBER JUNIPER	43	50cm spr	100cm ac
	THU	THUNBERGIA VIKTORIA	VIKTORIA	16	50cm spr	100cm ac
	THU	THUNBERGIA VIKTORIA	VIKTORIA	16	50cm spr	100cm ac
	THU	THUNBERGIA VIKTORIA	VIKTORIA	16	50cm spr	100cm ac
	THU	THUNBERGIA VIKTORIA	VIKTORIA	16	50cm spr	100cm ac
	THU	THUNBERGIA VIKTORIA	VIKTORIA	16	50cm spr	100cm ac
PERENNIALS	GER	GERANIUM MEDIUM	WILD GERANIUM	21	15 cm pot	plant 50cm ac
	HEM	HEMEROCALLIS (various clump)	HEMEROCALLIS	13	15 cm pot	plant 50cm ac
	HEM	HEMEROCALLIS (various clump)	HEMEROCALLIS	13	15 cm pot	plant 50cm ac
	HEM	HEMEROCALLIS (various clump)	HEMEROCALLIS	13	15 cm pot	plant 50cm ac
	HEM	HEMEROCALLIS (various clump)	HEMEROCALLIS	13	15 cm pot	plant 50cm ac
	HEM	HEMEROCALLIS (various clump)	HEMEROCALLIS	13	15 cm pot	plant 50cm ac
	HEM	HEMEROCALLIS (various clump)	HEMEROCALLIS	13	15 cm pot	plant 50cm ac
	HEM	HEMEROCALLIS (various clump)	HEMEROCALLIS	13	15 cm pot	plant 50cm ac
	HEM	HEMEROCALLIS (various clump)	HEMEROCALLIS	13	15 cm pot	plant 50cm ac
	HEM	HEMEROCALLIS (various clump)	HEMEROCALLIS	13	15 cm pot	plant 50cm ac
ORNAMENTAL GRASSES	HOS1	HOSIA Great Wall	Great Wall Grass	14	15 cm pot	plant 75cm ac
	HOS2	HOSIA Great Wall	Great Wall Grass	14	15 cm pot	plant 75cm ac
	HOS3	HOSIA Great Wall	Great Wall Grass	14	15 cm pot	plant 75cm ac
	HOS4	HOSIA Great Wall	Great Wall Grass	14	15 cm pot	plant 75cm ac
	HOS5	HOSIA Great Wall	Great Wall Grass	14	15 cm pot	plant 75cm ac
	HOS6	HOSIA Great Wall	Great Wall Grass	14	15 cm pot	plant 75cm ac
	HOS7	HOSIA Great Wall	Great Wall Grass	14	15 cm pot	plant 75cm ac
	HOS8	HOSIA Great Wall	Great Wall Grass	14	15 cm pot	plant 75cm ac
	HOS9	HOSIA Great Wall	Great Wall Grass	14	15 cm pot	plant 75cm ac
	HOS10	HOSIA Great Wall	Great Wall Grass	14	15 cm pot	plant 75cm ac
Vegetables	PA	PANICUM vagatum	SWITCH GRASS	57	15cm pot	plant 75cm ac
	PA	PANICUM vagatum	SWITCH GRASS	57	15cm pot	plant 75cm ac

GENERAL NOTES

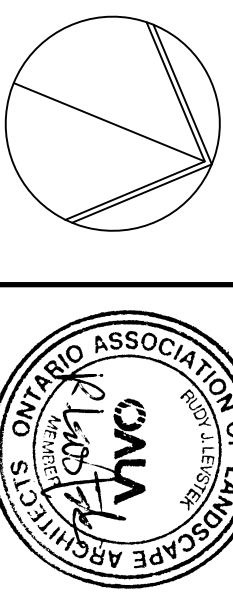
- 1 This drawing shall be read in conjunction with all relevant Architectural, Engineering and related Drawings and Documents.
 - 2 Refer to Engineering Drawings for Grading and Retention.
 - 3 Refer to Architectural Drawings for Site layout.
 - 4 Contractor shall provide the location(s) for Site layout, services/utilities by consulting Municipal Authorities and utility companies and shall be responsible for adequate protection from damage during construction.
 - 5 The Contractor shall comply with the requirements of the Metric Gauge Specifications for Nursery Stock (latest edition), published by the Canadian Nursery Trades Association.
 - 6 Plant Material locations are **Schematic Approximate only**. Contractor shall stake out locations on site prior to work.
 - 7 Contractor shall acceptance all plant material for a period of one (1) full year from the date of final acceptance.
 - 8 **Perennials and Ornamental Grasses** shall be planted in a continuous prepared bed of 450mm depth planting soil mix covered over with 75mm depth composted pine mulch in 100% grade (with WEED CONTROL FABRIC).
 - 9 Stake to specify location 125mm (approx). Stak shall be No. 1 quality conforming to the Canadian Nursery Stock Grower Specification.
 - 10 Reestablish all areas damaged or disturbed beyond the limit of Work.
 - 11 Plant Material substitutions shall not be permitted without written approval of the Municipality.
 - 12 Provide **protection for existing trees** to be retained. Install fencing to Critical Root Zone (CRZ) of each tree over groups of trees (if close together). No excavation, filling, storage of materials, disposal of chemicals or waste, vehicle traffic or other activity which could cause damage to the protected area. Compensation shall take place within limits of trees are removed to accommodate construction work. They shall be done in accordance with accepted horticultural practices.
 - 13 Where root systems become exposed due to excavation resulting in damaged roots and provide temporary protection and backfill as undertaken. Keep roots visible at all times.
 - 14 Contract works of retaining walls or grades around trees are to be modified. Root feed all existing trees around construction.
 - 15 Contractor shall advise Consultant a minimum of 48hrs prior to starting landscape work and any required Field Reviews.
- THIS PLAN HAS BEEN PREPARED FOR MUNICIPAL SITE PLAN APPROVAL ONLY, AND MAY NOT BE USED FOR ANY OTHER PURPOSE.**

LEGEND / SYMBOL



NOT FOR CONSTRUCTION

5.	SEPT 11/18	PAR CITY COMMENTS (1)
4.	MAY22/18	ISSUE FOR SPC (1)
3.	MAY22/18	ISSUE FOR COORDINATION / REVIEW (1)
2.	MAY18/18	ISSUE FOR COORDINATION / REVIEW (1)
1.	APR. 20/18	ISSUE FOR COORDINATION / REVIEW
no. date		revision



Contractor shall check and verify all dimensions on site and report all errors and/or omissions to the Consultant.
Work to be done in accordance with all applicable codes and by-laws.
Do not scale Drawing.
Copyright reserved. This Drawing is the exclusive property of Levstek Consultants inc.
and shall not be used without consent.

Consultant

EVEREST CONSULTANTS

LANDSCAPE ARCHITECT

5871 Hugh Crescent - Ottawa - Ontario - K0A 2W

--	--

MAJID DABIK

MANAGEMENT

MAINAGELINE

Project

263 GREENSWAY AVENUE

[illegible]

--	--

Drawing Title

LANDSCAPE PLAN

--

Drawn	Date	Drawing No.
-------	------	-------------

MGB MAR 2018 1401

Scale | Project No. | **LI-01**

1:200	1:41
-------	------

#1761

—
—
—
(
—