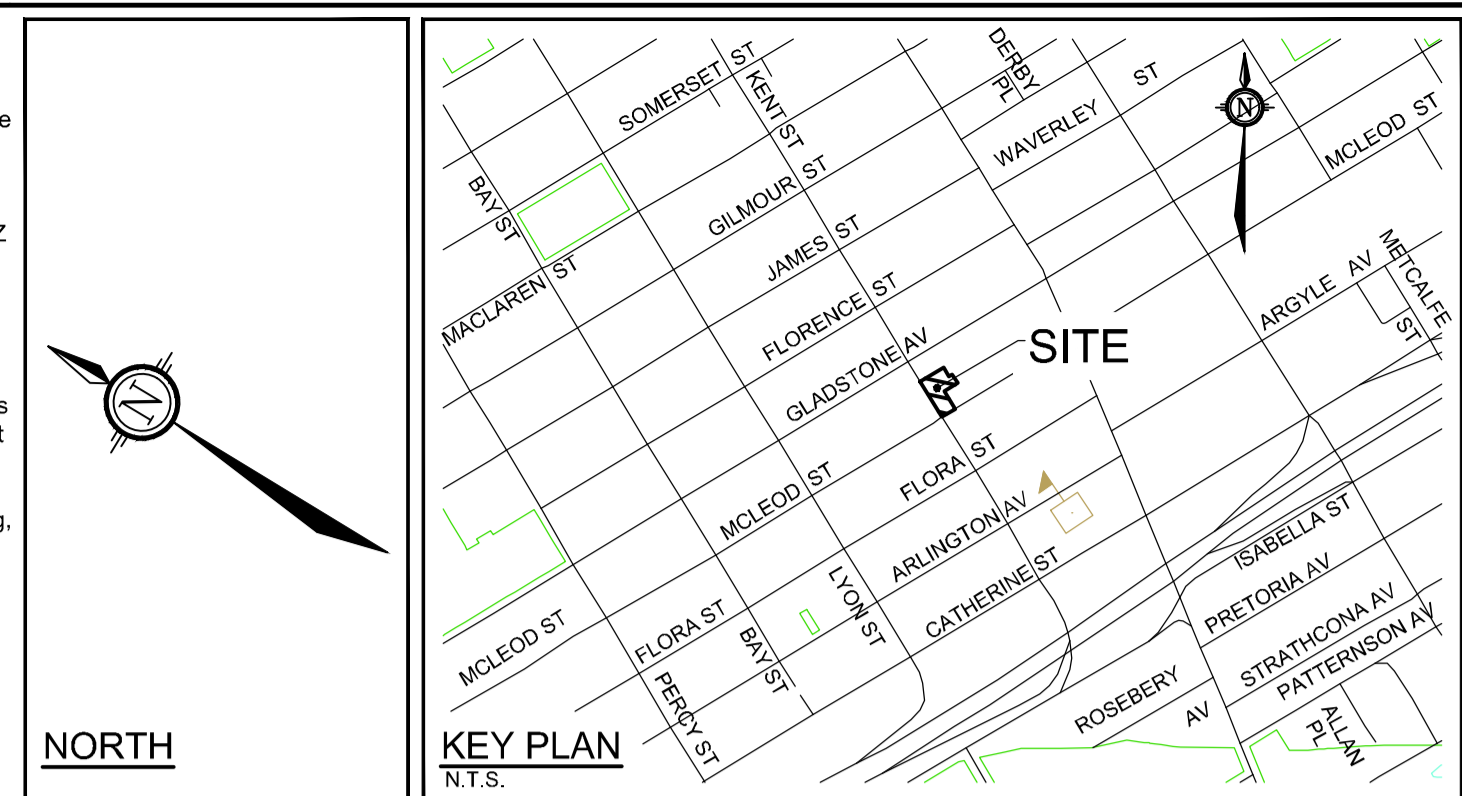


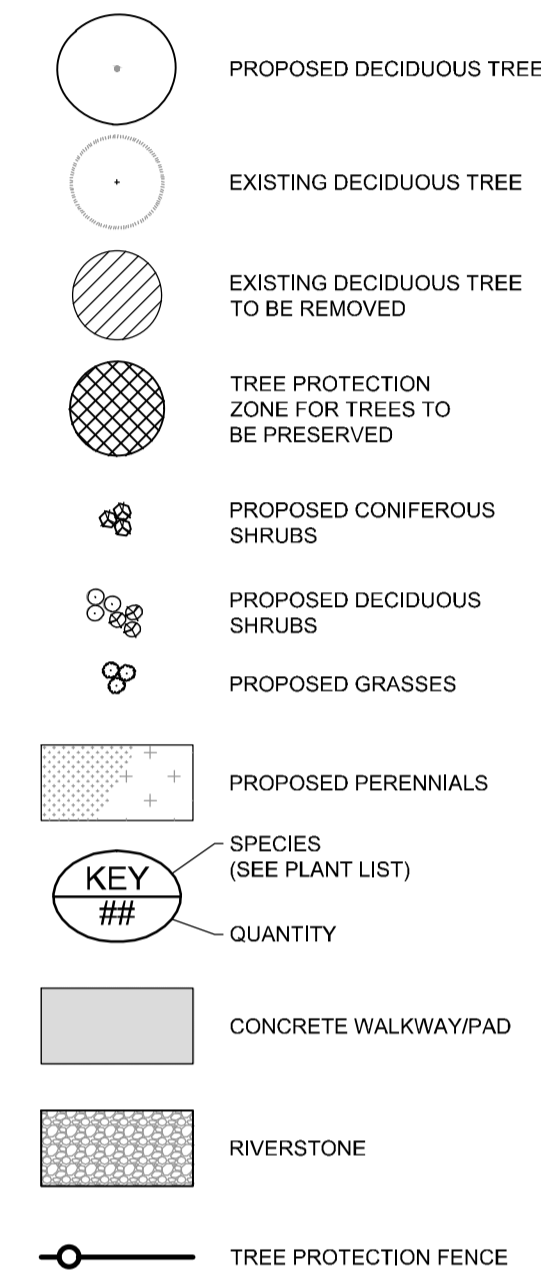
TREE PROTECTION NOTES

The following protection measures must be implemented for retained trees, both on site and on adjacent sites, prior to any tree removal or site works and maintained for the duration of construction on site:

- Under the guidance of a Landscape Architect or Certified Arborist, erect a fence at the critical root zone (CRZ) of trees where the CRZ is established as being 10 centimetres from the trunk of a tree for every centimetre of trunk diameter at breast height. The CRZ is calculated as DBH x 10cm. Refer to the Tree Protection Fence detail. See plan for fence location.
- When trees to be removed overlap with the CRZ of trees to be preserved: cut roots at the edge of the CRZ and grind down stumps after tree removals, do not pull out stumps. Ensure there is no root pulling or disturbance of the ground within the CRZ.
- If roots must be cut, roots 20mm or larger should be cut at right angles with clean, sharp horticultural tools without tearing, crushing, or pulling. Refer to City of Ottawa Specification S.P. F-8011 Tree Protection, Excavation of Root Zone.
- Hand work only where required within the CRZ; absolutely no machinery permitted.
- Do not place any material or equipment within the CRZ of any tree.
- Do not attach any signs, notices or posters to any tree.
- Do not disturb, raise or lower the existing grade within the CRZ without approval.
- Only tunnel or bore when digging within the CRZ of a tree.
- Do not damage the root system, trunk, or branches of any tree.
- Ensure that exhaust fumes from all equipment are directed away from any tree canopy.



LANDSCAPE LEGEND:



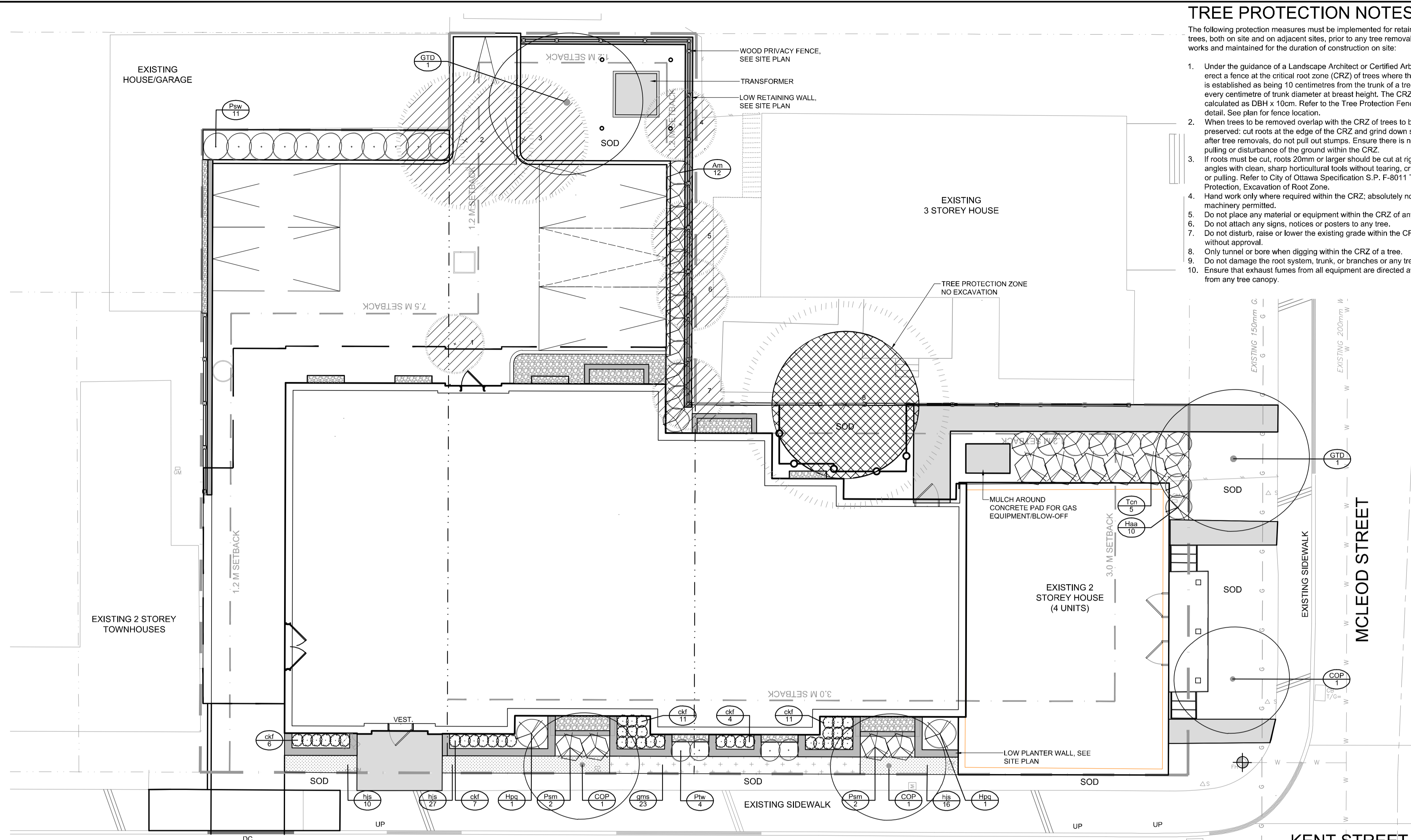
PLANTING NOTES

- This drawing shall be read in conjunction with all relevant Architectural, Engineering, and related drawings and documents.
- Refer to Engineering Drawings for Grading. Provide drainage as indicated in grading plan. Round all tops and toes of slopes, smoothly. Compact all areas to 95% Standard Proctor Density unless otherwise noted.
- Refer to Architectural Drawings for site layout.
- Refer to Engineering Drawings for site servicing.
- Contractor must contact utility companies for locates prior to excavation or planting.
- It is essential to use the plans and details in conjunction with the specifications and notes. Some or all the notes may not apply to the special requirements of a plant species or a planting environment.
- Existing trees to be retained shall be protected according to the contract detail and specifications.
- Plant material shall be No. 1 Grade and shall comply with Canadian Standards for Nursery Stock (latest edition) published by the Canadian Nursery Landscape Association.
- Use plant material with strong fibrous root system free of disease, defects or injuries, and structurally sound. Use trees with straight trunks, well and characteristically branched for species. Obtain approval from consultant of plant material at source prior to digging. All trees and shrubs shall be container grown, potted, W/B or B/B, as indicated on Plant List. Bare root planting will only be acceptable for certain species and as approved by the Landscape Architect.
- Plant material substitutions shall not be permitted without the written approval from the consultant, with 48 hours notice, prior to shipping plant material.
- Plant locations are schematic / approximate only. Contractor shall stake out locations on site for approval by the Landscape Architect prior to installation. The illustrated number of plants shown in the Planting Plan supersedes the estimated number in the Plant List. Contractor to report any discrepancies to the Landscape Architect prior to installation. Contractor will assume full responsibility if the Landscape Architect is not notified.
- Shrubs, Perennials, Vines, and Groundcovers shall be planted in a continuous planting bed of 450mm depth with approved topsoil covered with 75mm depth shredded bark mulch.
- Ensure trees are thoroughly watered following planting. Monitor material and ensure adequate moisture until acceptance.
- In heavy clay or poorly drained soils, set root ball with root collar 75-100mm higher than finished grade.
- Sod and/or seed areas to receive 100mm depth topsoil as specified. Sod shall be No. 1 Kentucky Bluegrass Sod grown from minimum mixture of 3 Kentucky Bluegrass cultivars. Quality and source shall comply with Canadian Standards for Nursery Stock, Section 17, (latest edition) published by the Canadian Nursery Landscape Association. Unless otherwise specified, turf is to be maintained by the contractor until a second cutting is accepted by the Landscape Architect.
- Apply the following mineral fertilizer unless soil tests show other requirements: Sodded areas - (8-32-16) 8% Nitrogen, 32% Phosphorus, 16% Potash at a rate of 350kg/ha. - Planting Beds (8-32-16) - 8% Nitrogen, 32% Phosphorus, 16% Potash as per manufacturer specifications.
- Reinstate all areas damaged or disturbed beyond the Limit of Work.

APPROVED REFUSED

THIS _____ DAY OF _____, 20____

DOUG JAMES, M.I.C.P., R.P.P.
MANAGER DEVELOPMENT REVIEW CENTRAL,
PLANNING, INFRASTRUCTURE AND ECONOMIC
DEVELOPMENT DEPARTMENT, CITY OF
OTTAWA

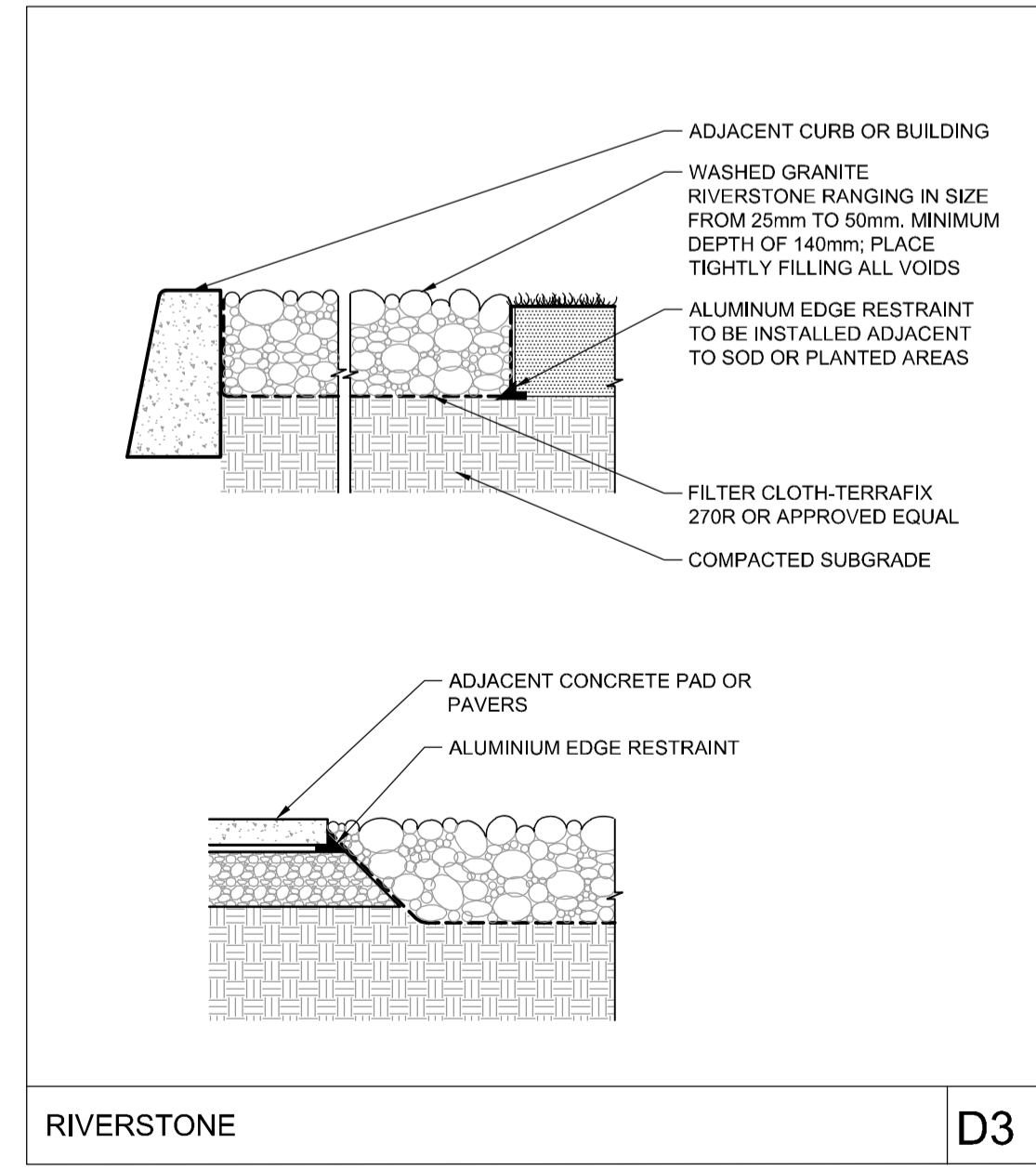
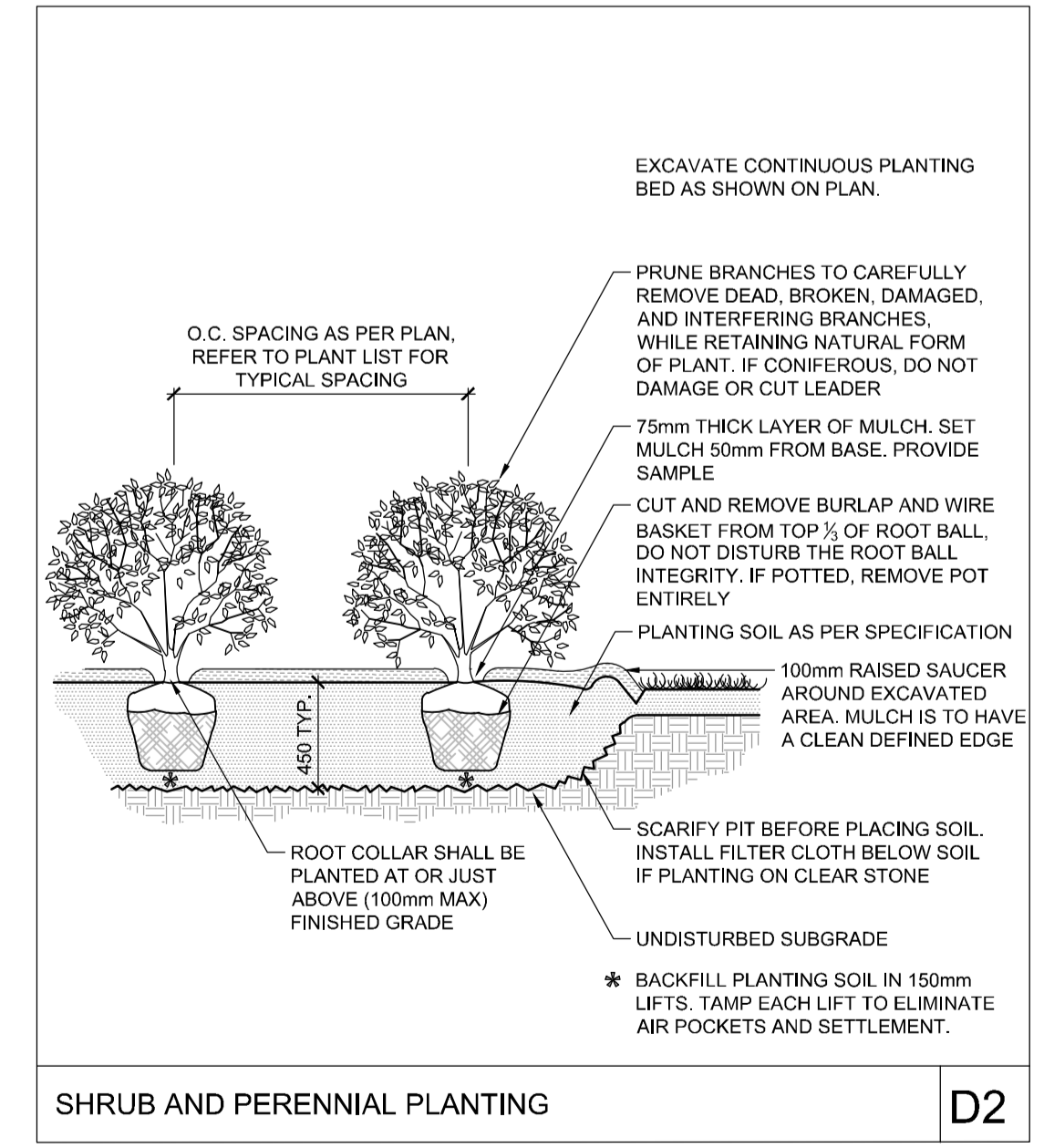
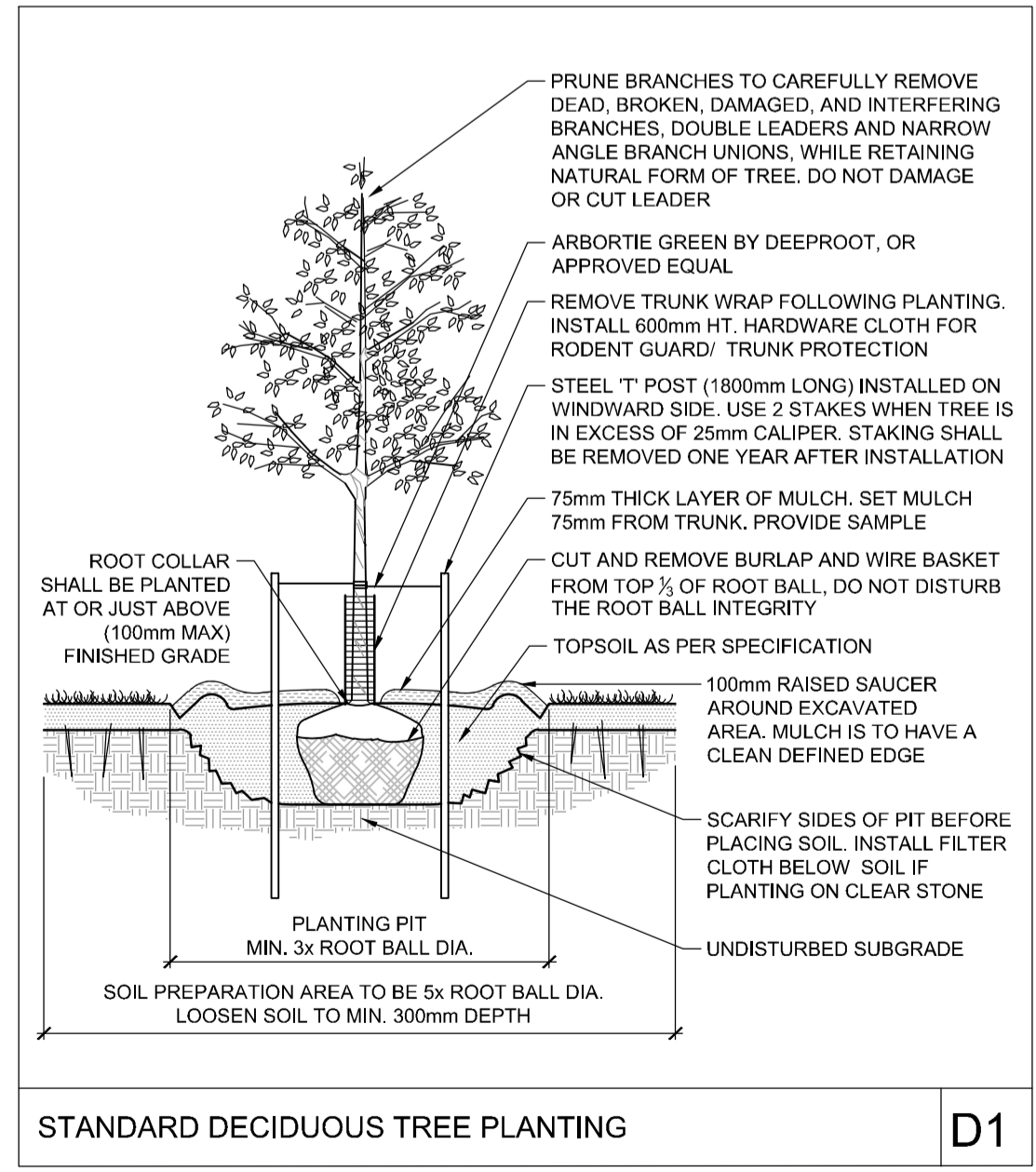


GENERAL NOTES

- All general site information and conditions are compiled from consultant's field notes and plans provided by the owner and are supplied for information purposes only. It shall be the responsibility of the contractor to verify the accuracy of all the information obtained from this plan.
- Contractor to check and report any discrepancies before commencing work. No responsibility is borne by the consultants for unknown utilities or subsurface conditions.
- Contractor to check and verify all dimensions on site and report any errors or omissions to the Project Manager.
- Drawings not to be scaled. Work to dimensions only.
- Contractor is responsible for all fees arising from the completion of works conveyed by these drawings, details & specifications. Fees include but are not limited to securities, permit fees, deposits, application fees, letters of credit, or any other related funding requests.
- All construction to be carried out in accordance with the most current provincial and municipal standards and specifications.
- Contractor to coordinate all access and protect the general public and users of the site with appropriate control fencing and supervision throughout the construction period, to the satisfaction of the facility manager and the project manager.
- Contractor responsible for the removal and off site disposal of all materials as required to facilitate new construction. All items and materials identified by the consultant to be salvaged shall be stored at a location on site as identified by the consultant.
- Site shall be maintained in a clean and orderly state for the duration of construction; all work shall be performed in accordance with the occupational health and safety act.

ROOF TOP AMENITY AREA NOTES

- There are to be 10 planters, spaced evenly around the perimeter of the roof top amenity area. Planters are MLP1500-MPP-R3 by Maglin. Gloss finish in Gunmetal colour.
- Per planter place one (1) ckl (Calamagrostis acutiflora 'Karl Foerster') and two (2) ssm (Sedum spectabile 'Matrona'). Place the ckl in the middle of the planter with a ssm on either side.



No.	Botanical Name	Common Name	DBH (m)	CRZ (m)	Condition	Remarks	Recommend
1	Ulmus pumila	Siberian Elm	0.23	2.30	F	Entangled w/ hydro pole and lines	Remove
2	Ulmus pumila	Siberian Elm	0.53	5.30	F	Supporting tree house	Remove
3	Acer negundo	Manitoba Maple	0.50	5.00	F	Two trunks each @ 0.25. Leaning. Supporting tree house.	Remove
4	Acer negundo	Manitoba Maple	0.28	2.80	F		Remove
5	Fraxinus	Ash	0.30	3.00	F		Remove
6	Acer negundo	Manitoba Maple	0.28	2.80	F		Remove
7	Acer negundo	Manitoba Maple	0.28	2.80	F	Leaning.	Remove
8	Acer saccharinum	Silver Maple	0.81	8.10	G	On the property line. Shared ownership.	PRESERVE

KEY	QTY	BOTANICAL NAME	COMMON NAME	SIZE	COND	SPACING
117202 - 425 McLeod Street - Proposed Plant List						
Deciduous Trees						
COP	3	Celtis occidentalis 'Prairie Sentinel'	Prairie Sentinel Hackberry	50mm Cal	WB	As Shown
GTD	2	Gleditsia triacanthos 'Draves'	Street Keeper Locust	60mm Cal	WB	As Shown
Coniferous Shrubs						
Psm	4	Taxus cuspidata 'Stowmound'	Stowmound Mugho Pine	40cm Spr	PT	100cm O.C.
Tcn	5	Faxus cuspidata 'Nana'	Dwarf Japanese Yew	50cm Spr	PT	120cm O.C.
Deciduous Shrubs						
Am	12	Aronia melanocarpa	Black Chokeberry	0.60m Ht	PT	100cm O.C.
Haa	10	Hydrangea arborescens 'Annabelle'	Annabelle Hydrangea	0.60m Ht	PT	100cm O.C.
Hq	2	Hydrangea paniculata 'Quick Fire'	Quick Fire Hydrangea	0.60m Ht	PT	As Shown
Psw	11	Physocarpus opulifolius 'Seward'	Summer Wine Ninebark	0.60m Ht	PT	100cm O.C.
Ptw	4	Physocarpus opulifolius 'Tiny Wine'	Tiny Wine Ninebark	0.40m Ht	PT	80cm O.C.
Perennials						
gms	23	Geranium macrorrhizum 'Spessart'	Spessart Cranesbill	1g	PT	60cm O.C.
hjs	53	Hemerocallis 'Joan Senior'	Joan Senior Daylily	1g	PT	45cm O.C.
Grasses						
ckf	39	Calamagrostis acutiflora 'Karl Foerster'	Karl Foerster Feather Reed Grass	1g	PT	45cm O.C.

117202 - 425 McLeod Street - Proposed Roof Top Amenity Plant List

KEY	QTY	BOTANICAL NAME	COMMON NAME	SIZE	COND	SPACING
Perennials						
ssm	20	Sedum spectabile 'Matrona'	Matrona Shovy Stonecrop Sedum	1g	PT	**
Grasses						
ckf	10	Calamagrostis acutiflora 'Karl Foerster'	Karl Foerster Feather Reed Grass	1g	PT	**

** SEE ROOFTOP AMENITY AREA NOTES

NOT FOR CONSTRUCTION

No.	REVISION	DATE	BY
6.	FOURTH SITE PLAN SUBMISSION	AUG 15/18	RJ
5.	COCA REVIEW	JUL 27/18	RJ
4.	THIRD SITE PLAN SUBMISSION	MAY 24/18	RJ
3.	SECOND SITE PLAN APPLICATION	MAR 23/18	RJ
2.	ISSUED FOR SITE PLAN APPLICATION	DEC 15/17	RJ
1.	ISSUED FOR COORDINATION	DEC 7/17	RJ

SCALE	DESIGN	CHECKED	APPROVED
1:100	KW	RJ	RJ
1:100	KW/MT	RJ	RJ
			RJ

FOR REVIEW ONLY

NOVATECH
Engineers, Planners & Landscape Architects
Suite 200, 240 Michael Cowpland Drive
Ottawa, Ontario, Canada K2M 1P6
Telephone (613) 254-9643
Facsimile (613) 254-5867
Website www.novatech-eng.com

LOCATION
CITY OF OTTAWA
423, 425 MCLEOD STREET AND 443, 447 KENT STREET

DRAWING NAME
LANDSCAPE PLAN AND TREE CONSERVATION REPORT

PROJECT NO.
117202-00

REV # 5

DRAWING NO.
117202-L1

M:\0317\117202\CADD\landscape\LP\Plan\117202-L1.dwg, L-1, Aug 15, 2018 - 9:31 am, vawson

D07-12-17-0173