



Pedestrian Level Wind Study

275 Carling Avenue

Ottawa, Ontario

REPORT: GWE17-194-CFDPLW

Prepared For:

Keith Taggart
Taggart Group of Companies (Tamarack)
3187 Albion Road South
Ottawa, ON K1V 8Y3
Canada

Prepared By:

Nicolas Pratt, M.E.Sc., Junior Wind Scientist
Justin Ferraro, Principal
Vincent Ferraro, M.Eng., P.Eng., Managing Principal

December 22, 2017

EXECUTIVE SUMMARY

This report describes a computer-based pedestrian level wind study in support of a Site Plan Approval (SPA) application for the proposed retirement residence located at 275 Carling Avenue in Ottawa, Ontario. The study involves simulation of wind speeds for selected wind directions in a three-dimensional (3D) computer model using the Computational Fluid Dynamics (CFD) technique, combined with meteorological data integration, to assess pedestrian comfort and safety within and surrounding the development site. The results and recommendations derived from these considerations are summarized in the following paragraphs and detailed in the subsequent report.

A complete summary of the predicted wind conditions is presented in Section 5. Based on CFD test results, interpretation and experience with similar developments, and reference to City of Ottawa wind criteria, we conclude that all grade-level areas within and surrounding the development site will be acceptable for the intended pedestrian uses on a seasonal basis. More specifically, wind conditions along surrounding sidewalks and walkways, as well as in close proximity to building access points and the transit stop at the northeast corner of the intersection of Carling Avenue and Cambridge Street South, will be acceptable for the intended pedestrian uses of the areas throughout the year.

Regarding the elevated amenity areas serving the proposed development at Level 16, the north and northeast terraces, as well as the east half of the southwest terrace, will be comfortable for sitting, or more sedentary activities during the typical use period. However, the west half of the southwest terrace will be comfortable for standing during the summer season, becoming windier and suitable for strolling during the remaining colder seasons. If calm wind conditions are required within the west half of the noted terrace during the warmer months, the introduction of 1.8-m tall wind barriers in place of standard height perimeter guards extending fully along the west perimeter and halfway along the south sides of the terrace would be recommended.

Excluding anomalous localized storm events such as tornadoes and downbursts, no areas over the study site are considered uncomfortable or unsafe.

TABLE OF CONTENTS

1.	INTRODUCTION	1
2.	TERMS OF REFERENCE	1
3.	OBJECTIVES	2
4.	METHODOLOGY	2
4.1	Computer-Based Context Modelling	2
4.2	Wind Speed Measurements	3
4.3	Meteorological Data Analysis	4
4.4	Pedestrian Comfort Criteria – City of Ottawa	6
5.	RESULTS AND DISCUSSION	8
6.	SUMMARY AND RECOMMENDATIONS	10

FIGURES

APPENDICES

Appendix A – Simulation of the Natural Wind

Appendix B – Pedestrian Level Wind Measurement Methodology

1. INTRODUCTION

Gradient Wind Engineering Inc. (GWE) was retained by the Taggart Group of Companies (Tamarack) to undertake a Pedestrian Level Wind (PLW) study in support of a Site Plan Approval (SPA) application for the proposed retirement residence located at 275 Carling Avenue in Ottawa, Ontario.

Our mandate within this study, as outlined in GWE proposal #17-271P, dated November 1, 2017, is to investigate pedestrian wind comfort within and surrounding the development site, and to identify any areas where wind conditions may interfere with certain pedestrian activities so that mitigation measures may be considered, where necessary. Our work is based on industry standard computer simulations using the Computational Fluid Dynamics (CFD) technique and data analysis procedures, City of Ottawa wind criteria, architectural drawings provided by Roderick Lahey Architects Inc. in December 2017, surrounding street layouts and existing and approved future building massing information obtained from the City of Ottawa, as well as recent site imagery.

2. TERMS OF REFERENCE

The focus of this PLW study is a proposed retirement residence located at 275 Carling Avenue in Ottawa, Ontario. The development is located on the western portion of a parcel of land bounded by Clemow Avenue to the North, Bronson Avenue to the east, Carling Avenue to the south, and Cambridge Street South to the west. The property boundary includes the proposed development at 275 Carling Avenue and the existing 8-storey commercial/office building at 265 Carling Avenue. Of importance for this study, an existing 2½-storey residential building (350 Clemow Avenue) is located to the immediate northeast of the proposed development.

The study site is surrounded in the near-field, within a radius of approximately 200-500 metres (m), by a suburban mix of low- and mid-rise developments in all directions, with the exception of the greenspace of Commissioners Park to the southwest, which gives way to Dow's Lake approximately 470 m from the study site. At greater distances from the study site, the mix of low- and mid-rise developments continues in the northwest, northeast, and southeast quadrants, while the southwest quadrant is characterized by the more open exposures of Dow's Lake beyond which is greenspace and farmland.

The proposed retirement residence is a 16-storey building of nearly rectangular planform with slight rectangular insets and the long axis oriented along Cambridge Street South. The ground level comprises

indoor amenity, lobby, and dining/kitchen facilities, in addition to a shipping/receiving room and loading bay adjacent to the east stairwell. The main lobby entrance is situated at the centre of the west elevation, via Cambridge Street South, while the loading bay is accessed from the centre of the east elevation. A ramp accessed from Clemow Avenue provides access to four levels of below-grade parking. At Level 3 the floorplate steps back on all elevations, above which the building rises uniformly to Level 15. At Level 16 the floorplate features cut-outs at the northeast and southwest corners, which are served by outdoor amenity areas.

Key areas under consideration for pedestrian wind comfort include surrounding sidewalks, walkways, building access points and nearby transit stops, as well as the Level 16 outdoor amenity areas. Figure 1 illustrates the study site and surrounding context, while Figures 2A and 2B illustrate the computational model used to conduct the study.

3. OBJECTIVES

The principal objectives of this study are to: (i) determine pedestrian level comfort and safety conditions at key outdoor areas; (ii) identify areas where future wind conditions may interfere with the intended uses of outdoor spaces; and (iii) recommend suitable mitigation measures, where required.

4. METHODOLOGY

The approach followed to quantify pedestrian wind conditions over the site is based on computer simulations of wind speeds across the study site within a virtual environment using the CFD technique, meteorological analysis of the Ottawa area wind climate, and synthesis of computational data with City of Ottawa criteria¹. The following sections describe the analysis procedures, including a discussion of the pedestrian comfort criteria.

4.1 Computer-Based Context Modelling

A computer-based PLW study is performed to determine the influence of the wind environment on pedestrian comfort over the proposed development site. Pedestrian comfort predictions, based on the mechanical effects of wind, are determined by combining measured wind speed data from CFD simulations with statistical weather data obtained from Macdonald-Cartier International Airport. The general concept and approach to CFD modelling is to represent building and topographic details in the

¹ City of Ottawa Terms of References: Wind Analysis

immediate vicinity of the study site on the surrounding model, and to create suitable atmospheric wind profiles at the model boundary. The wind profiles are designed to have similar mean and turbulent wind properties consistent with actual site exposures.

An industry standard practice is to omit trees, vegetation, and other existing and planned landscape elements from the computational model due to the difficulty of providing accurate seasonal representation of vegetation. The omission of trees and other landscaping elements produces slightly more conservative wind speed values.

4.2 Wind Speed Measurements

The PLW analysis was performed by simulating wind flows and gathering velocity data over a CFD model of the site for 12 wind directions. The CFD simulation model was centered on the study building, complete with surrounding massing within a diameter of approximately 840 m.

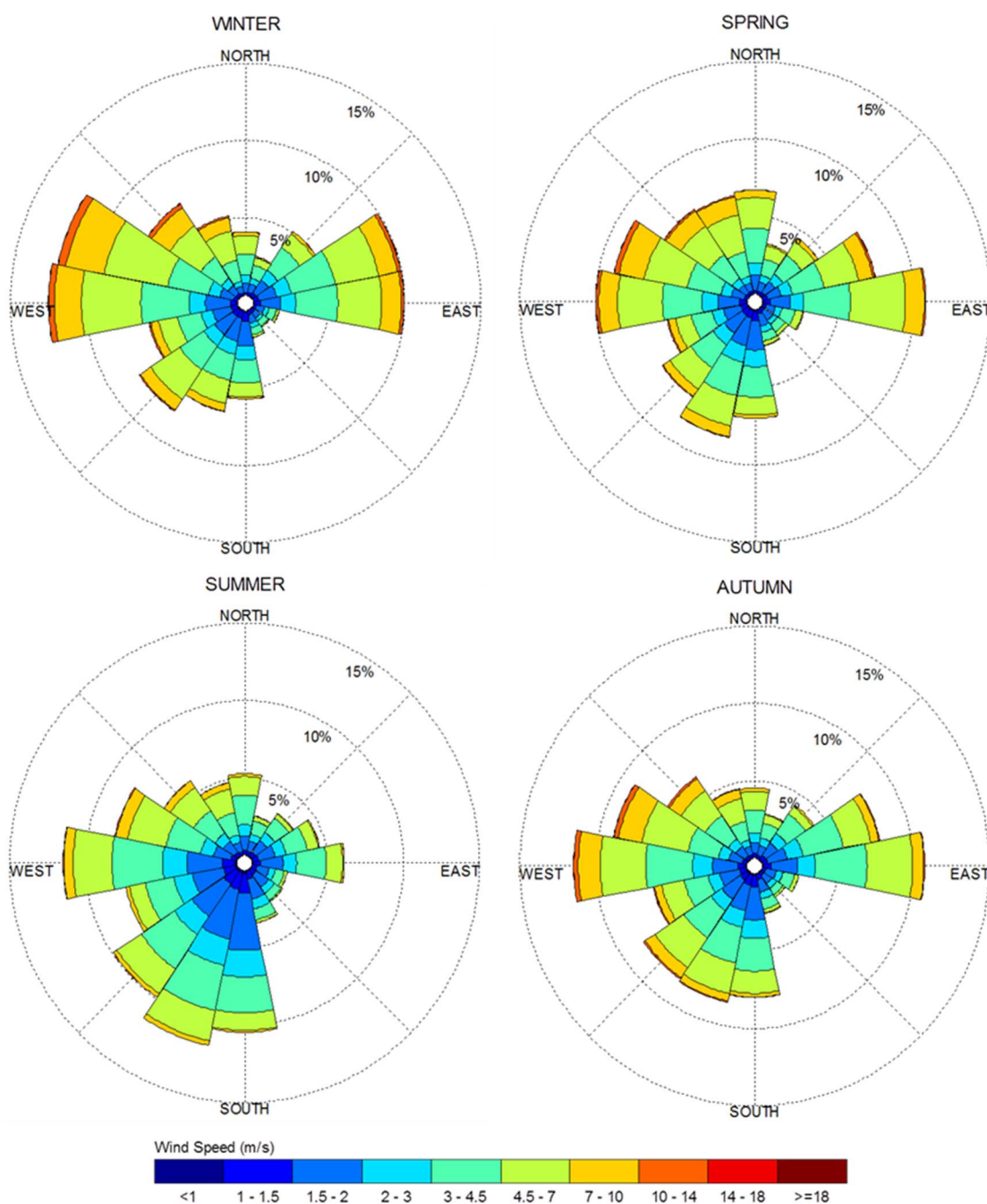
Mean and peak wind speed data obtained over the study site for each wind direction were interpolated to 36 wind directions at 10° intervals, representing the full compass azimuth. Measured wind speeds approximately 1.5 m above local grade, as well as 1.5 m above the elevated outdoor amenity areas, were referenced to the wind speed at gradient height to generate mean and peak velocity ratios, which were used to calculate full-scale values. The gradient height represents the theoretical depth of the boundary layer of the Earth's atmosphere, above which the mean wind speed remains constant. Appendices A and B provide greater detail of the theory behind wind speed measurements.

4.3 Meteorological Data Analysis

A statistical model for winds in Ottawa was developed from approximately forty years of hourly meteorological wind data recorded at Macdonald-Cartier International Airport, and obtained from the local branch of Atmospheric Environment Services of Environment Canada. Wind speed and direction data were analyzed for each month of the year in order to determine the statistically prominent wind directions and corresponding speeds, and to characterize similarities between monthly weather patterns. Based on this portion of the analysis, the four seasons are represented by grouping data from consecutive months based on similarity of weather patterns, and not according to the traditional calendar method.

The statistical model of the Ottawa area wind climate, which indicates the directional character of local winds on a seasonal basis, is illustrated on the following page. The plots illustrate seasonal distribution of measured wind speeds and directions in metres per second (m/s). Probabilities of occurrence of different wind speeds are represented as stacked polar bars in sixteen azimuth divisions. The radial direction represents the percentage of time for various wind speed ranges per wind direction during the measurement period. The preferred wind speeds and directions can be identified by the longer length of bars. For Ottawa, the most common winds occur for westerly wind directions, followed by those from the east, while the most common wind speeds are below 10 m/s. The directional preference and relative magnitude of wind speed changes somewhat from season to season. By convention in microclimate studies, wind direction refers to the wind origin (e.g., a north wind blows from north to south).

SEASONAL DISTRIBUTION OF WINDS FOR VARIOUS PROBABILITIES MACDONALD-CARTIER INTERNATIONAL AIRPORT, OTTAWA, ONTARIO



Notes:

1. Radial distances indicate percentage of time of wind events.
2. Mean hourly wind speeds in m/s measured at 10 m above the ground.
3. Apply a factor of 3.6 to convert m/s to km/h (e.g., 10 m/s is equivalent to 36 km/h).

4.4 Pedestrian Comfort Criteria – City of Ottawa

Pedestrian comfort criteria are based on mechanical wind effects without consideration of other meteorological conditions (i.e., temperature, relative humidity). The City of Ottawa criteria provide an assessment of comfort, assuming pedestrians are appropriately dressed for a specified outdoor activity during any given season. Five pedestrian comfort classes and corresponding gust wind speed ranges are used to assess pedestrian comfort, which include: (i) Sitting; (ii) Standing; (iii) Strolling; (iv) Walking; (v) Uncomfortable; and (vi) Dangerous. More specifically, the comfort classes, associated wind speed ranges, and limiting criteria are summarized as follows:

- (i) **Sitting:** Mean wind speeds no greater than 10 km/h occurring at least 80% of the time. The gust equivalent mean wind speed is approximately 14 km/h.
- (ii) **Standing:** Mean wind speeds no greater than 14 km/h occurring at least 80% of the time. The gust equivalent mean wind speed is approximately 20 km/h.
- (iii) **Strolling:** Mean wind speeds no greater than 17 km/h occurring at least 80% of the time. The gust equivalent mean wind speed is approximately 25 km/h.
- (iv) **Walking:** Mean wind speeds no greater than 20 km/h occurring at least 80% of the time. The gust equivalent mean wind speed is approximately 30 km/h.
- (v) **Uncomfortable:** Uncomfortable conditions are characterized by predicted values that fall below the 80% target for walking. Brisk walking and exercise, such as jogging, would be acceptable for moderate excesses of this criterion.
- (vi) **Dangerous:** Gust equivalent mean wind speeds greater than or equal to 90 km/h, occurring more often than 0.1% of the time, are classified as dangerous. From calculations of stability, it can be shown that gust wind speeds of 90 km/h would be the approximate threshold wind speed that would cause an average elderly person in good health to fall.

Gust speeds are used in the criteria because people tend to be more sensitive to wind gusts than to steady winds for lower wind speed ranges. For strong winds approaching dangerous levels, this effect is less important because the mean wind can also cause problems for pedestrians. The mean gust speed ranges are selected based on 'The Beaufort Scale', which describes the effect of forces produced by varying wind speeds on levels on objects.

THE BEAUFORT SCALE

Number	Description	Wind Speed (km/h)	Description
2	Light Breeze	4-8	Wind felt on faces.
3	Gentle Breeze	8-15	Leaves and small twigs in constant motion; Wind extends light flags.
4	Moderate Breeze	15-22	Wind raises dust and loose paper; Small branches are moved.
5	Fresh Breeze	22-30	Small trees in leaf begin to sway.
6	Strong Breeze	30-40	Large branches in motion; Whistling heard in electrical wires; Umbrellas used with difficulty.
7	Moderate Gale	40-50	Whole trees in motion; Inconvenient walking against wind.
8	Gale	50-60	Breaks twigs off trees; Generally impedes progress.

Experience and research on people's perception of mechanical wind effects has shown that if the wind speed levels are exceeded for more than 20% of the time, the activity level would be judged to be uncomfortable by most people. For instance, if gust wind speeds of 14 km/h were exceeded for more than 20% of the time, most pedestrians would judge that location to be too windy for sitting or more sedentary activities. Similarly, if 30 km/h at a location were exceeded for more than 20% of the time, walking or less vigorous activities would be considered uncomfortable. As most of these criteria are based on subjective reactions of a population to wind forces, their application is partly based on experience and judgment.

Once the pedestrian wind speed predictions have been established across the study site, the assessment of pedestrian comfort involves determining the suitability of the predicted wind conditions for their associated spaces. This step involves comparing the predicted comfort class to the desired comfort class, which is dictated by the location type. An overview of common pedestrian location types and their desired comfort classes are summarized on the following page.

DESIRED PEDESTRIAN COMFORT CLASSES FOR VARIOUS LOCATION TYPES

Location Types	Desired Comfort Classes
Major Building Entrances	Standing
Secondary Building Access Points	Walking
Primary Public Sidewalks	Strolling
Secondary Public Sidewalks / Bicycle Paths	Walking
Outdoor Amenity Spaces	Sitting
Cafés / Patios / Benches / Gardens	Sitting
Transit Shelters	Standing
Public Parks / Plazas	Strolling
Garage / Service Entrances	Walking
Parking Lots	Walking
Vehicular Drop-Off Zones	Walking

5. RESULTS AND DISCUSSION

The foregoing discussion of the predicted pedestrian wind conditions for the study site is accompanied by Figures 3A through 6B (following the main text), which illustrate seasonal wind conditions at grade level and at the Level 16 outdoor amenity terraces. The colour contours indicate predicted regions of the various comfort classes, as dictated by City of Ottawa criteria. Wind conditions suitable for sitting are represented by the colour green, standing by yellow, strolling by orange, while conditions suitable for walking are represented by the colour blue.

Carling Avenue Sidewalk including Secondary Entrances and Transit Stop (Figures 3A-6A, Tags A and B):

The sidewalk along the south side of the building (Tag A), including at secondary building entrances and the existing transit stop (Tag B), will generally be comfortable for sitting during the summer season, becoming suitable for standing, or better, during the remaining seasons. Wind conditions within the southwest corner of the building are somewhat windier and suitable for standing during the summer season and for strolling during the winter season. However, the noted conditions are acceptable for the intended pedestrian uses of the spaces.

Cambridge Street South Sidewalk including Lobby Entrance (Figures 3A-6A, Tags C and D): The sidewalk along the west side of the building (Tag C), including the secondary building entrances, will be comfortable for standing, or better, throughout the year. However, wind comfort at the main lobby entrance (Tag D) will be calmer and suitable for sitting throughout the year. The noted conditions are considered acceptable for the intended pedestrian uses of the spaces.

Clemow Avenue Sidewalk including Parking Entrance (Figures 3A-6A, Tags E and F): The sidewalk along the north side of the building (Tag E), including secondary building entrances and the below-grade parking entrance (Tag F), will generally be comfortable for standing, or better, throughout the year. However, conditions close to the building will be suitable for sitting during the summer season. Pedestrian wind comfort between the study building and the existing residential building located at 350 Clemow Avenue to the northeast are predicted to be somewhat windier, becoming suitable for strolling during the spring and winter seasons. The noted conditions are acceptable for the intended pedestrian uses of the spaces.

East Walkway (Figures 3A-6A, Tags G and H): The walkway along the east side of the study building (Tag G) will generally be comfortable for sitting during the summer season, becoming suitable for standing during the remaining seasons. Towards the northwest corner of the existing commercial/office building located at 265 Carling Avenue, inclusive of the loading bay access (Tag H), conditions are somewhat windier and suitable for standing during the summer season, and for strolling during the spring season. The noted conditions are acceptable for the intended pedestrian uses of the spaces.

Level 16 Outdoor Amenity Areas (Figures 3B-6B, Tags I-K): The north amenity terrace (Tag I) will be comfortable for sitting during the summer season, becoming suitable for standing, or better, during the remaining seasons. The northeast amenity terrace (Tag J) will be comfortable for sitting, or more sedentary activities, throughout the year. The noted conditions are acceptable for the intended pedestrian uses of the areas.

The east half of the southwest amenity terrace (Tag K) will be comfortable for sitting during the summer season, becoming suitable for standing, or better, during the remaining colder seasons, which is acceptable. The west half of the terrace will be comfortable for standing during the summer season, becoming suitable for strolling, or better, during the remaining colder seasons. If calm wind conditions are required within the west half of the terrace during the warmer months, the introduction of 1.8-m tall wind barriers in place of standard height perimeter guards extending fully along the west perimeter and halfway along the south sides of the terrace would be recommended.

Influence of the Proposed Development on Existing Wind Conditions near the Study Site: Wind conditions over surrounding sidewalks beyond the development site, as well as at nearby building entrances, will be comfortable for their intended pedestrian uses during each seasonal period upon the introduction of the proposed development at 275 Carling Avenue.

Wind Safety: Within the context of typical weather patterns, which exclude anomalous localized storm events such as tornadoes and downbursts, no areas over the study site were found to experience wind conditions that are considered uncomfortable or unsafe.

6. SUMMARY AND RECOMMENDATIONS

This document describes the results of a PLW study in support of a SPA application for the proposed retirement residence located at 275 Carling Avenue in Ottawa, Ontario. Based on CFD test results, interpretation and experience with similar developments, and reference to City of Ottawa wind criteria, we conclude that all grade-level areas within and surrounding the development site will be acceptable for the intended pedestrian uses on a seasonal basis. More specifically, wind conditions along surrounding sidewalks and walkways, as well as in close proximity to building access points and the transit stop at the northeast corner of the intersection of Carling Avenue and Cambridge Street South, will be acceptable for the intended pedestrian uses of the areas throughout the year.

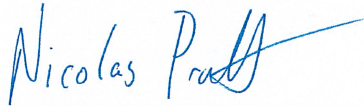
Regarding the elevated amenity areas serving the proposed development at Level 16, the north and northeast terraces, as well as the east half of the southwest terrace, will be comfortable for sitting, or more sedentary activities during the typical use period. However, the west half of the southwest terrace will be comfortable for standing during the summer season, becoming suitable for strolling, or better, during the remaining colder seasons. If calm wind conditions are required within the west half of the noted terrace during the warmer months, the introduction of 1.8-m tall wind barriers in place of standard height perimeter guards extending fully along the west perimeter and halfway along the south sides of the terrace would be recommended.

Excluding anomalous localized storm events such as tornadoes and downbursts, no areas over the study site are considered uncomfortable or unsafe.

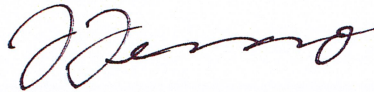
This concludes our pedestrian level wind report. Please advise the undersigned of any questions or comments.

Sincerely,

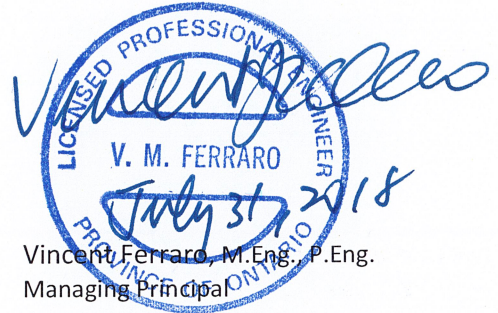
Gradient Wind Engineering Inc.

A handwritten signature in blue ink that reads "Nicolas Pratt".

Nicolas Pratt, M.E.Sc.
Junior Wind Scientist

A handwritten signature in dark ink that reads "Justin Ferraro".

Justin Ferraro
Principal

A blue circular professional engineer seal for the Province of Ontario. The seal contains the text "LICENSED PROFESSIONAL ENGINEER", "V. M. FERRARO", and "July 31, 2018". A handwritten signature in blue ink is written over the seal.

Vincent Ferraro, M.Eng., P.Eng.
Managing Principal



127 Walgreen Road
Ottawa, Ontario
(613) 836 0934

GRADIENTWIND
ENGINEERING INC

PROJECT

275 CARLING AVENUE, OTTAWA
PEDESTRIAN LEVEL WIND STUDY

SCALE

1:800 (APPROX.)

DATE

DECEMBER 22, 2017

DRAWING NO.

GWE17-194-CFDPLW-1

DRAWN BY

B.J.

DESCRIPTION

FIGURE 1:
SITE PLAN AND SURROUNDING CONTEXT

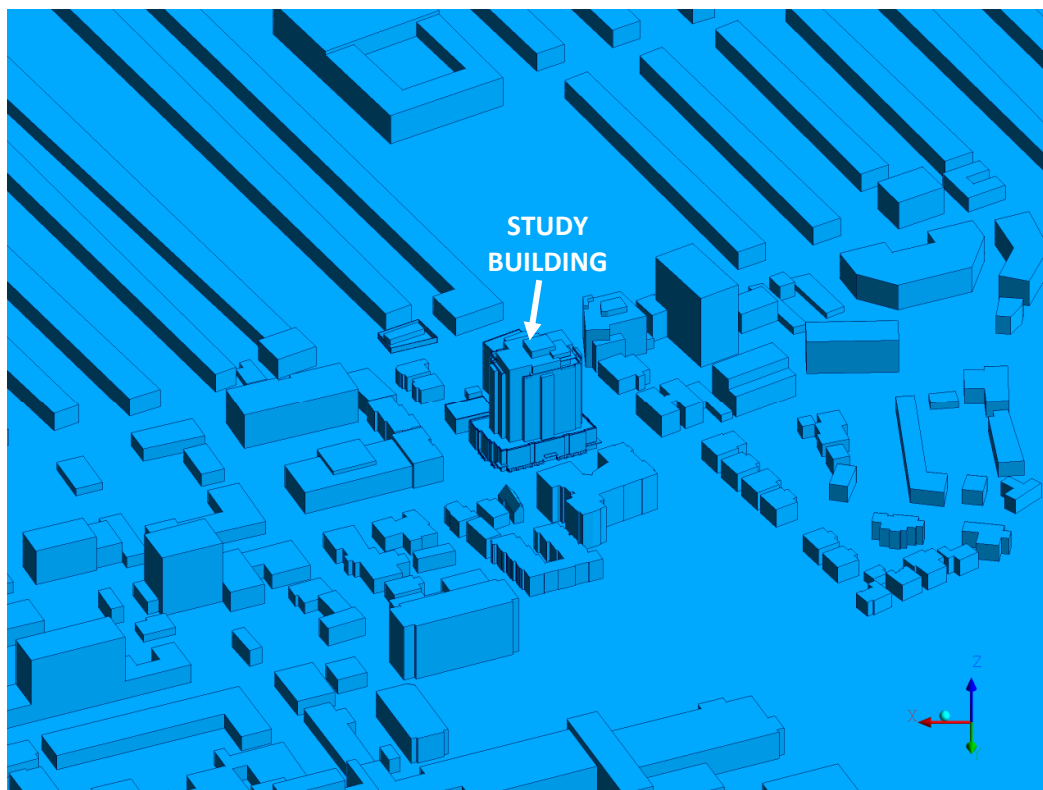


FIGURE 2A: COMPUTATIONAL MODEL, WEST PERSPECTIVE

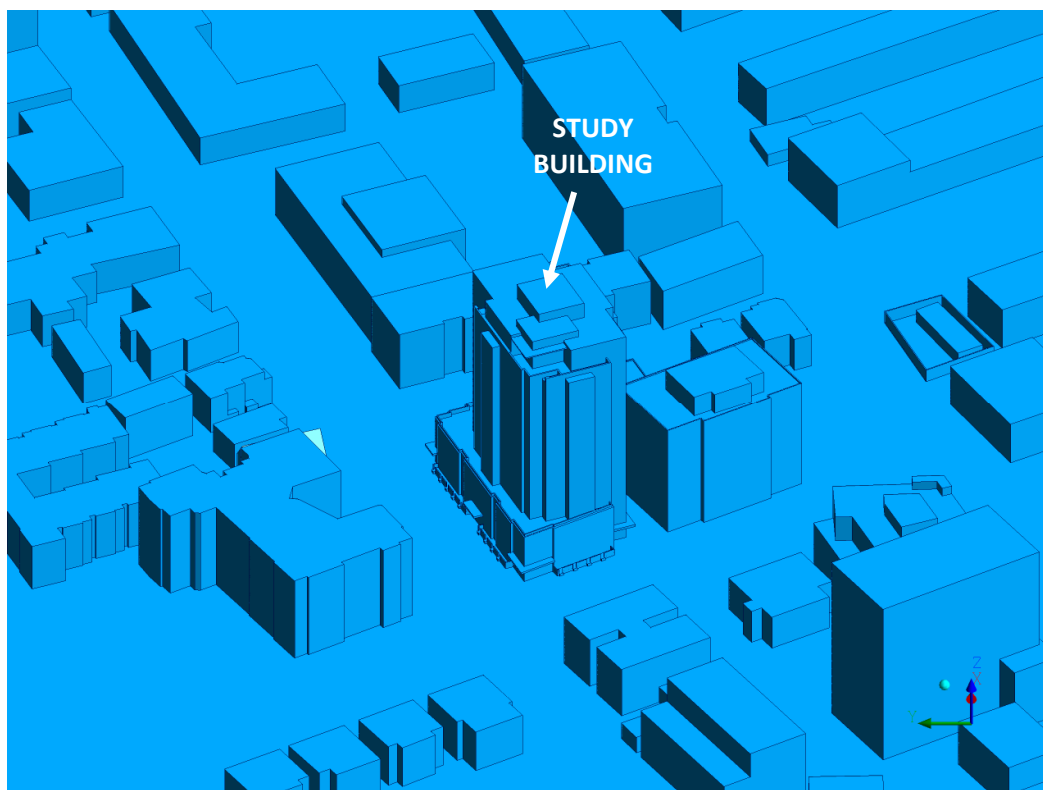
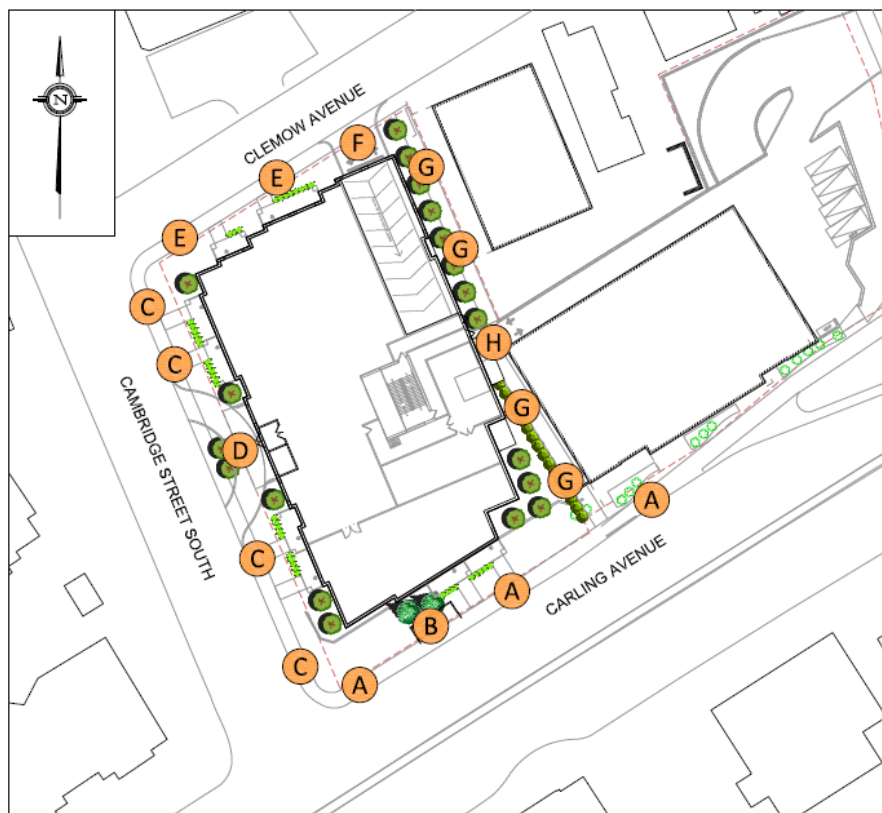


FIGURE 2B: STUDY BUILDING, SOUTH PERSPECTIVE



FIGURE 3A: SPRING – GRADE-LEVEL PEDESTRIAN WIND CONDITIONS



275 CARLING AVENUE - REFERENCE MARKER LOCATIONS

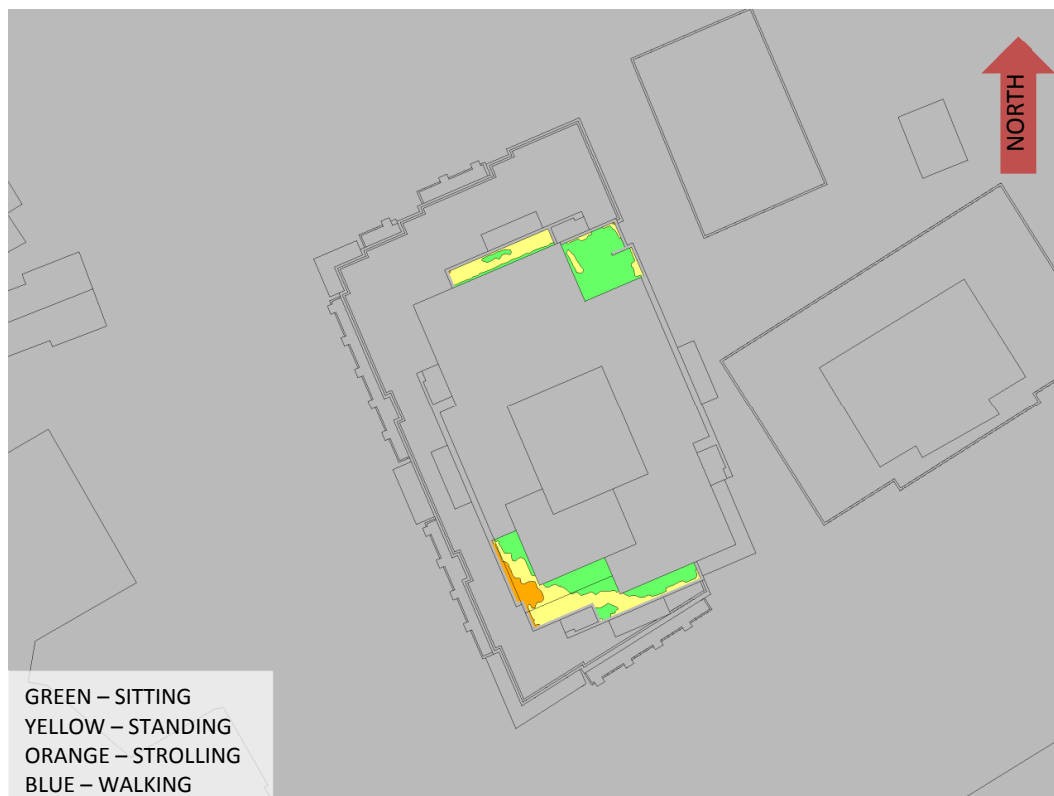
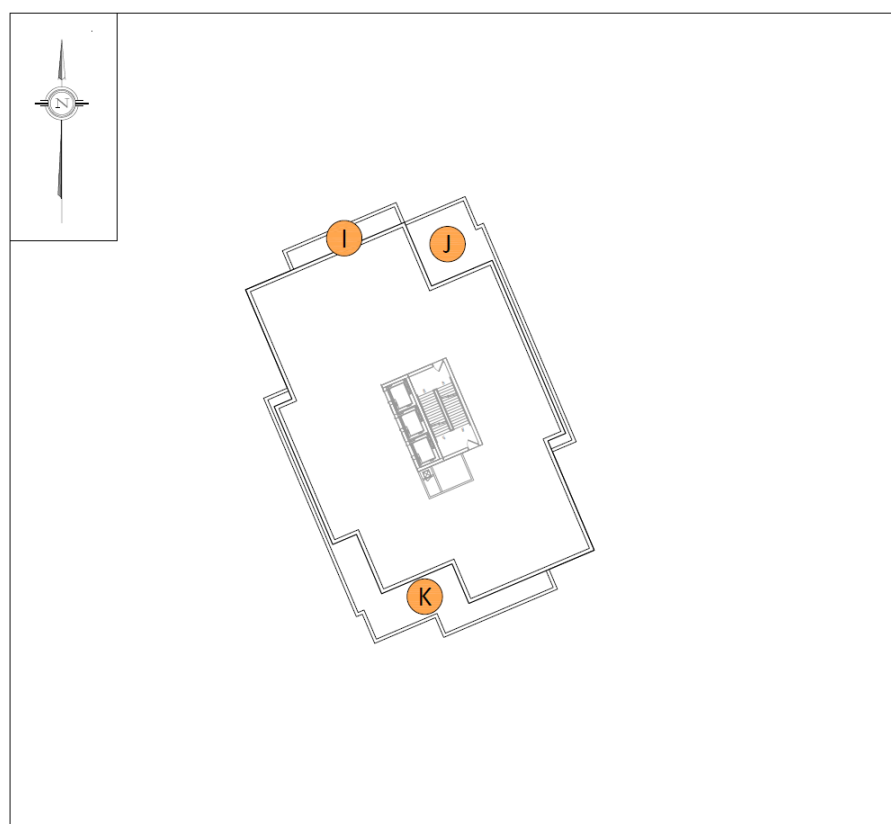


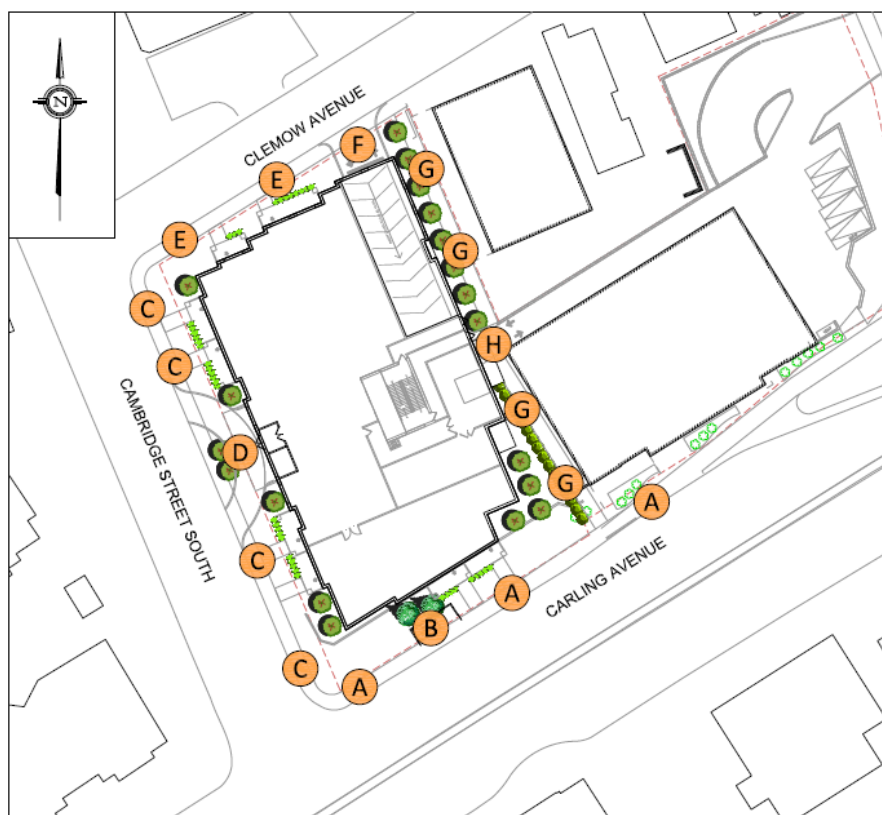
FIGURE 3B: SPRING – LEVEL 16 OUTDOOR AMENITY AREA WIND CONDITIONS



275 CARLING AVENUE - REFERENCE MARKER LOCATIONS



FIGURE 4A: SUMMER – GRADE-LEVEL PEDESTRIAN WIND CONDITIONS



275 CARLING AVENUE - REFERENCE MARKER LOCATIONS

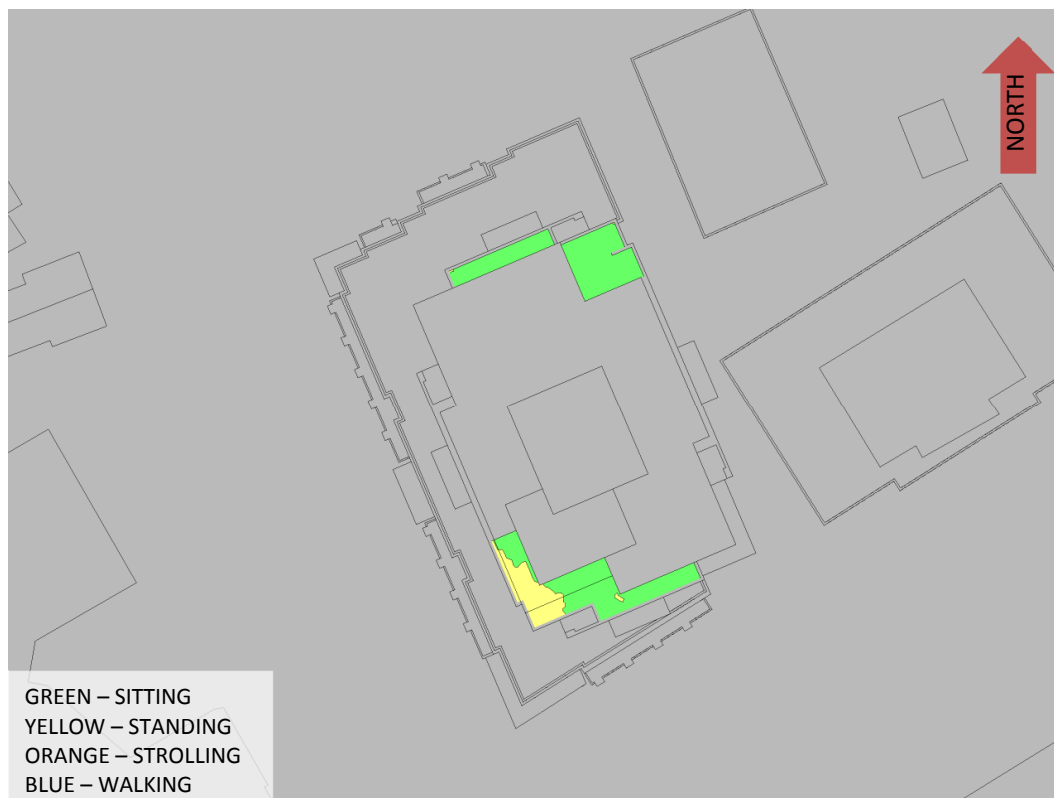
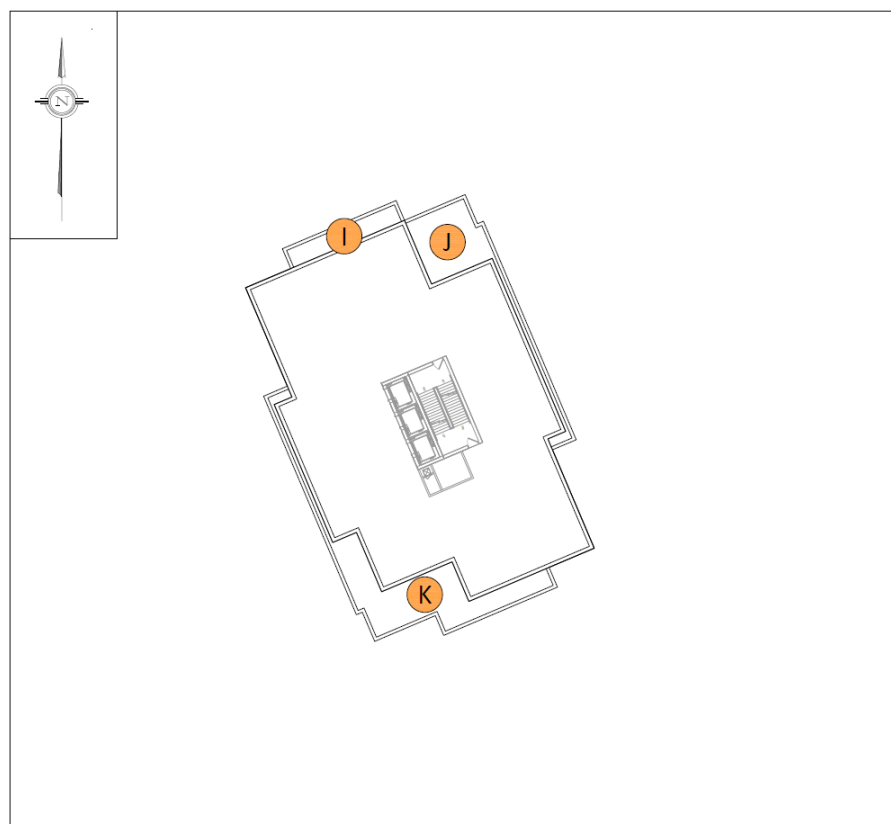


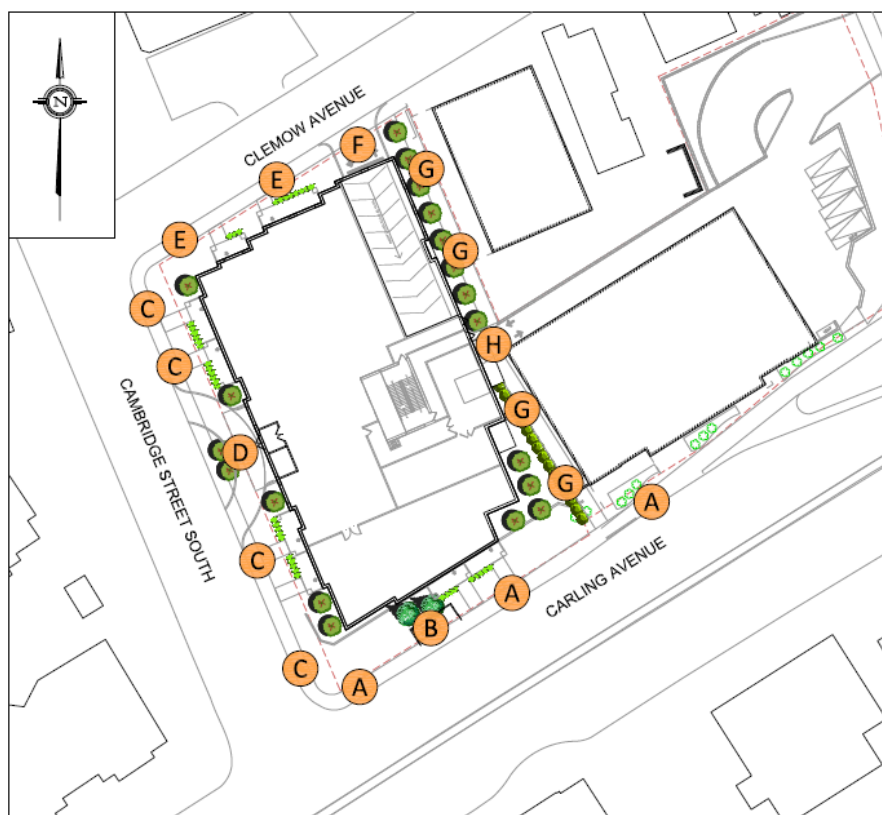
FIGURE 4B: SUMMER – LEVEL 16 OUTDOOR AMENITY AREA WIND CONDITIONS



275 CARLING AVENUE - REFERENCE MARKER LOCATIONS



FIGURE 5A: AUTUMN – GRADE-LEVEL PEDESTRIAN WIND CONDITIONS



275 CARLING AVENUE - REFERENCE MARKER LOCATIONS

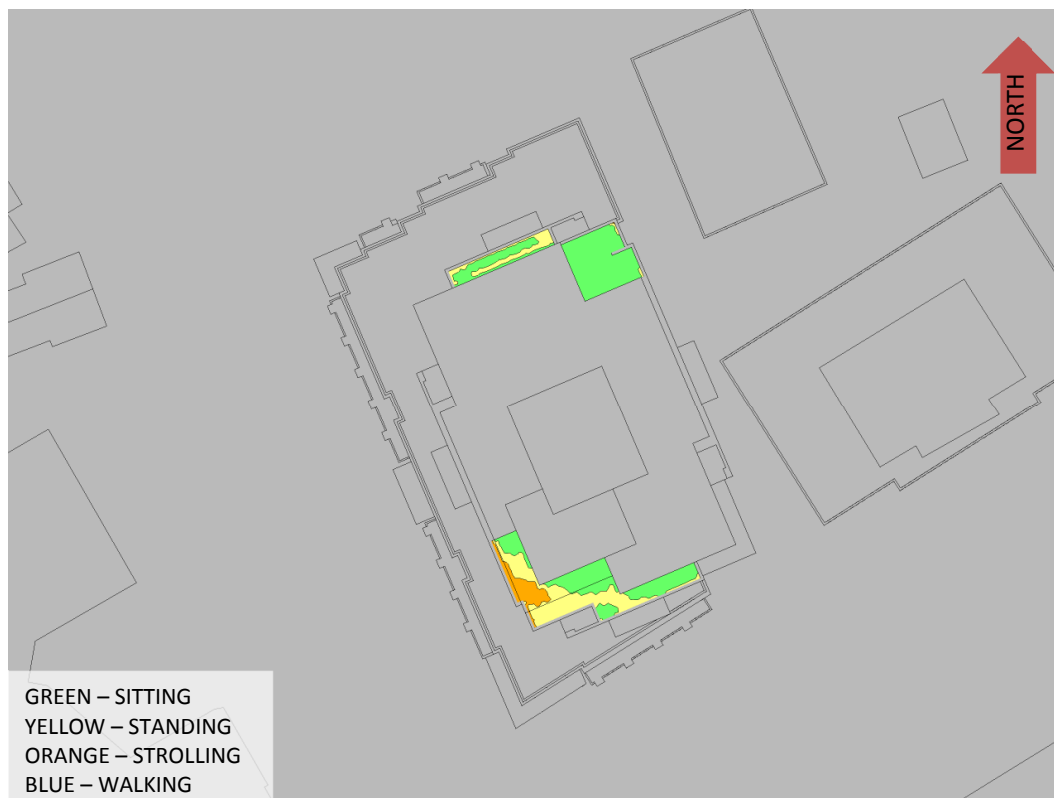
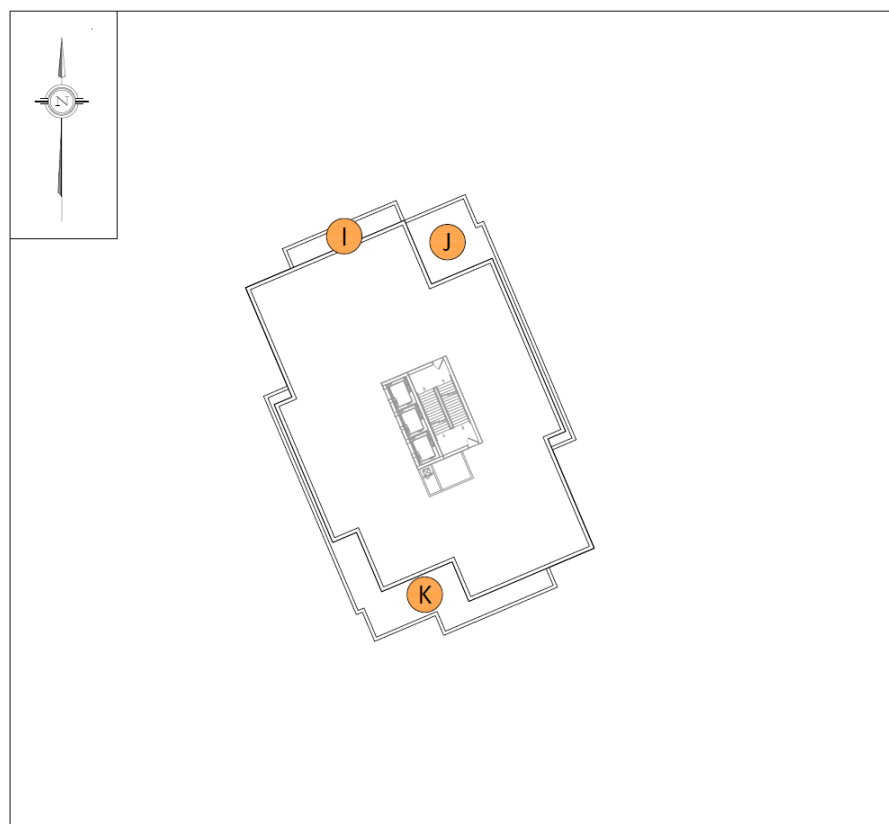


FIGURE 5B: AUTUMN – LEVEL 16 OUTDOOR AMENITY AREA WIND CONDITIONS



275 CARLING AVENUE - REFERENCE MARKER LOCATIONS

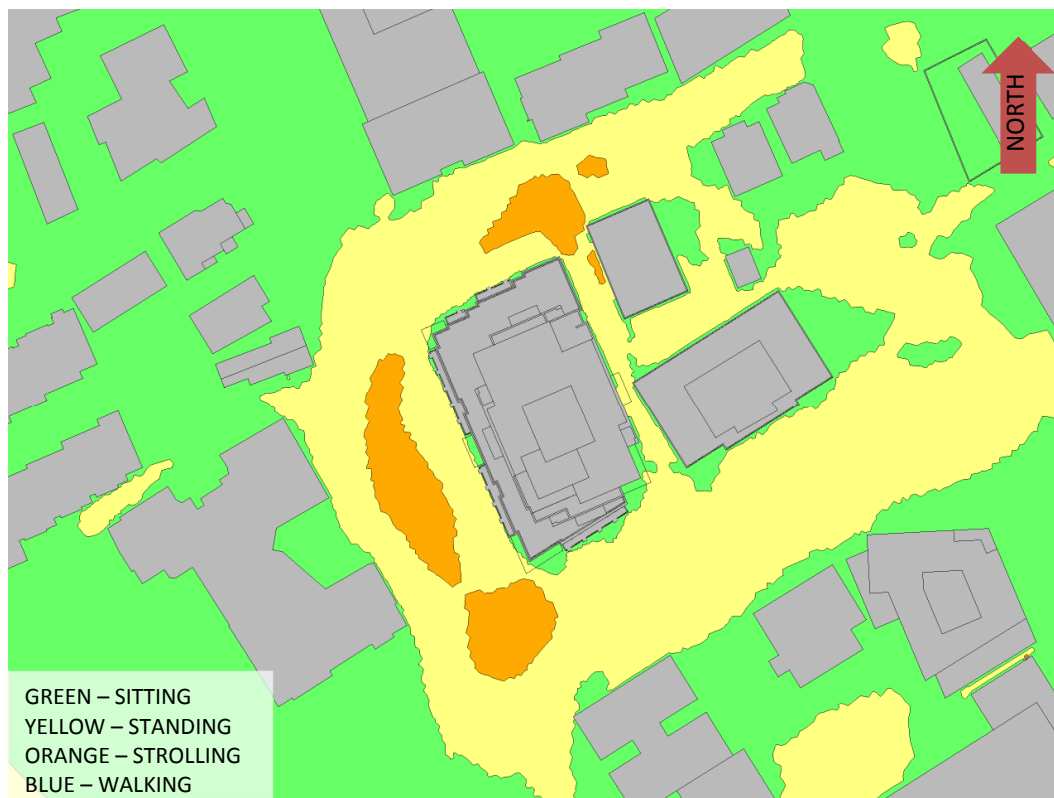
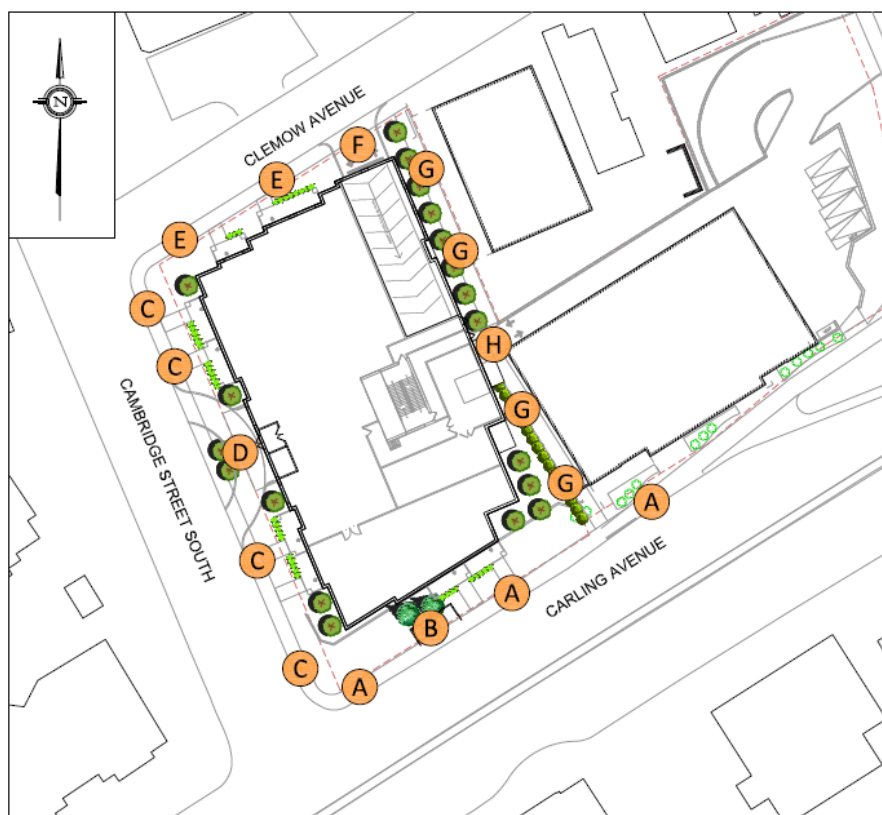


FIGURE 6A: WINTER – GRADE-LEVEL PEDESTRIAN WIND CONDITIONS



275 CARLING AVENUE - REFERENCE MARKER LOCATIONS

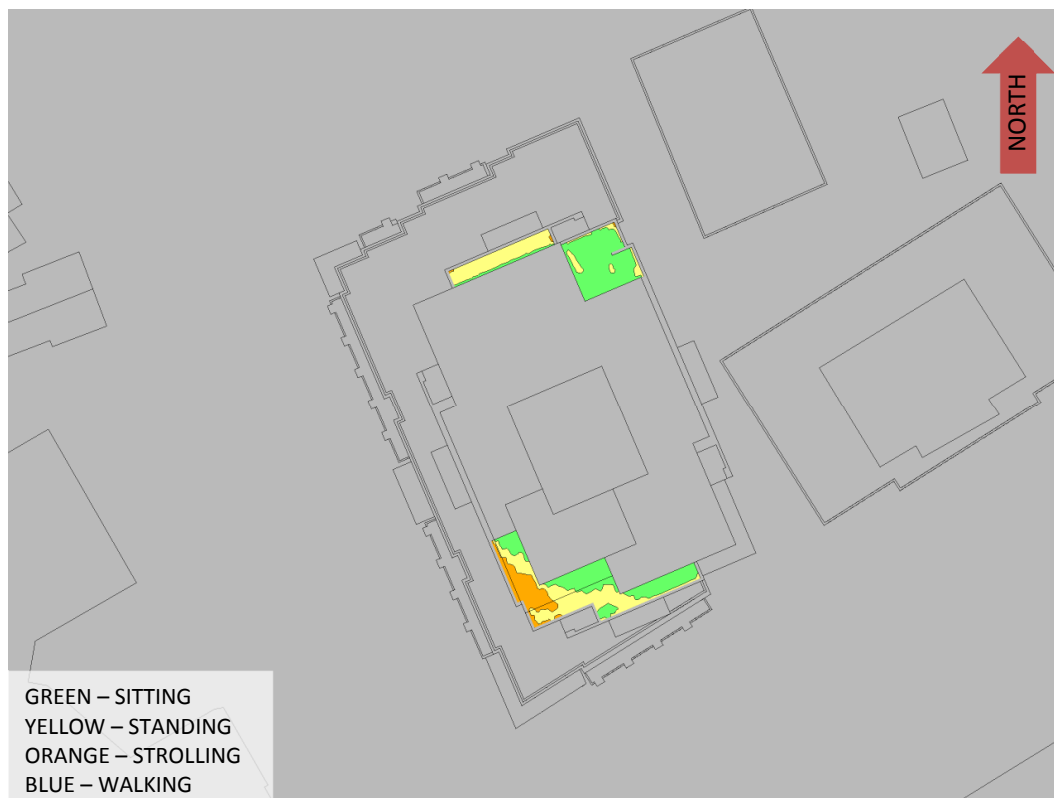
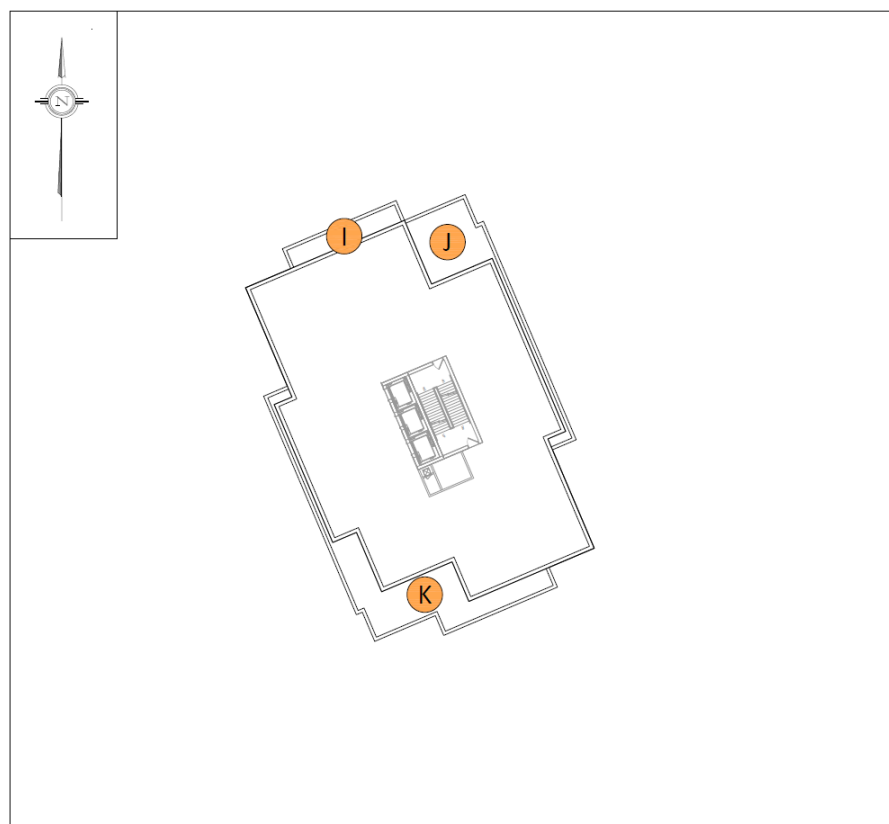


FIGURE 6B: WINTER – LEVEL 2 OUTDOOR AMENITY AREA WIND CONDITIONS



275 CARLING AVENUE - REFERENCE MARKER LOCATIONS

APPENDIX A

SIMULATION OF THE NATURAL WIND

The information contained within this appendix is offered to provide a greater understanding of the relationship between the physical wind tunnel testing method and virtual computer-based simulations

WIND TUNNEL AND CFD SIMULATION OF THE NATURAL WIND

Wind flowing over the surface of the earth develops a boundary layer due to the drag produced by surface features such as vegetation and man-made structures. Within this boundary layer, the mean wind speed varies from zero at the surface to the gradient wind speed at the top of the layer. The height of the top of the boundary layer is referred to as the gradient height, above which the velocity remains more-or-less constant for a given synoptic weather system. The mean wind speed is taken to be the average value over one hour. Superimposed on the mean wind speed are fluctuating (or turbulent) components in the longitudinal (i.e. along wind), vertical and lateral directions. Although turbulence varies according to the roughness of the surface, the turbulence level generally increases from nearly zero (smooth flow) at gradient height to maximum values near the ground. While for a calm ocean the maximum could be 20%, the maximum for a very rough surface such as the center of a city could be 100%, or equal to the local mean wind speed. The height of the boundary layer varies in time and over different terrain roughness within the range of 400 m to 600 m.

Simulating real wind behavior in a wind tunnel, or by computer models (CFD), requires simulating the variation of mean wind speed with height, simulating the turbulence intensity, and matching the typical length scales of turbulence. It is the ratio between wind tunnel turbulence length scales and turbulence scales in the atmosphere that determines the geometric scales that models can assume in a wind tunnel. Hence, when a 1:200 scale model is quoted, this implies that the turbulence scales in the wind tunnel and the atmosphere have the same ratios. Some flexibility in this requirement has been shown to produce reasonable wind tunnel predictions compared to full-scale. In model scale the mean and turbulence characteristics of the wind are obtained with the use of spires at one end of the tunnel and roughness elements along the floor of the tunnel. The fan is located at the model end and wind is pulled over the spires, roughness elements and model. It has been found that, to a good approximation, the mean wind profile can be represented by a power law relation, shown below, giving height above ground versus wind speed.

$$U = U_g \left(\frac{Z}{Z_g} \right)^\alpha$$

Where; U = mean wind speed, U_g = gradient wind speed, Z = height above ground, Z_g = depth of the boundary layer (gradient height) and α is the power law exponent.

Figure A1 plots three such profiles for the open country, suburban and urban exposures. The exponent α varies according to the type of terrain; $\alpha = 0.14, 0.25$ and 0.33 for open country, suburban and urban exposures respectively. Figure A2 illustrates the theoretical variation of turbulence in full scale and some wind tunnel measurement for comparison.

The integral length scale of turbulence can be thought of as an average size of gust in the atmosphere. Although it varies with height and ground roughness, it has been found to generally be in the range of 100 m to 200 m in the upper half of the boundary layer. For a 1:300 scale, for example, the model value should be between 1/3 and 2/3 of a meter. Integral length scales are derived from power spectra, which describe the energy content of wind as a function of frequency. There are several ways of determining integral length scales of turbulence. One way is by comparison of a measured power spectrum in model scale to a non-dimensional theoretical spectrum such as the Davenport spectrum of longitudinal turbulence. Using the Davenport spectrum, which agrees well with full-scale spectra, one can estimate the integral scale by plotting the theoretical spectrum with varying L until it matches as closely as possible the measured spectrum:

$$f \times S(f) = \frac{\frac{4(Lf)^2}{U_{10}^2}}{\left[1 + \frac{4(Lf)^2}{U_{10}^2}\right]^{\frac{4}{3}}}$$

Where, f is frequency, $S(f)$ is the spectrum value at frequency f , U_{10} is the wind speed 10 m above ground level, and L is the characteristic length of turbulence.

Once the wind simulation is correct, the model, constructed to a suitable scale, is installed at the center of the working section of the wind tunnel. Different wind directions are represented by rotating the model to align with the wind tunnel center-line axis.

REFERENCES

1. Teunissen, H.W., 'Characteristics Of The Mean Wind And Turbulence In The Planetary Boundary Layer', Institute For Aerospace Studies, University Of Toronto, UTIAS # 32, Oct. 1970
2. Flay, R.G., Stevenson, D.C., 'Integral Length Scales In An Atmospheric Boundary Layer Near The Ground', 9th Australian Fluid Mechanics Conference, Auckland, Dec. 1966
3. ESDU, 'Characteristics of Atmospheric Turbulence Near the Ground', 74030
4. Bradley, E.F., Coppin, P.A., Katen, P.C., 'Turbulent Wind Structure Above Very Rugged Terrain', 9th Australian Fluid Mechanics Conference, Auckland, Dec. 1966

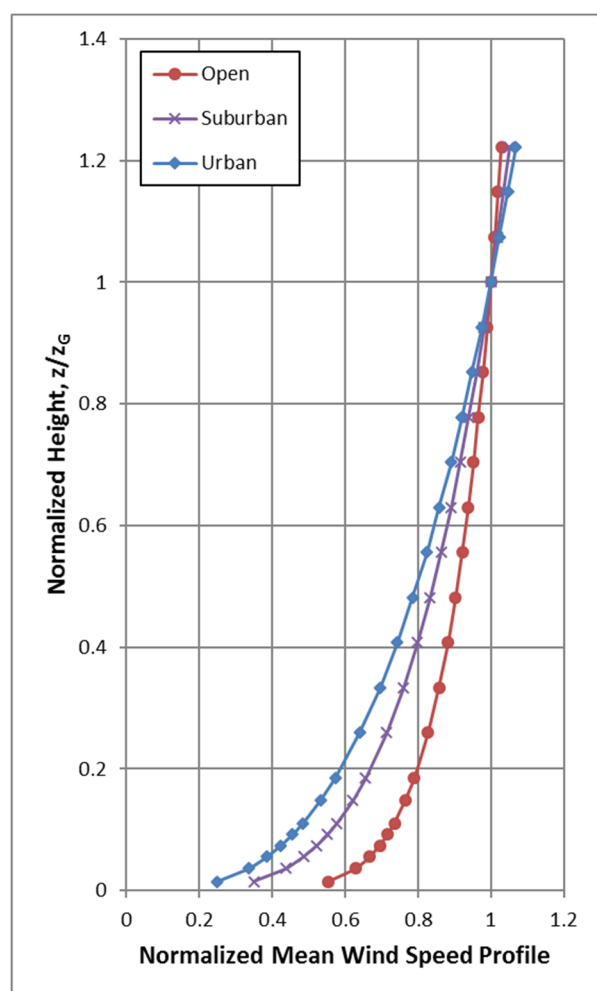


Figure A1: Mean Wind Speed Profiles

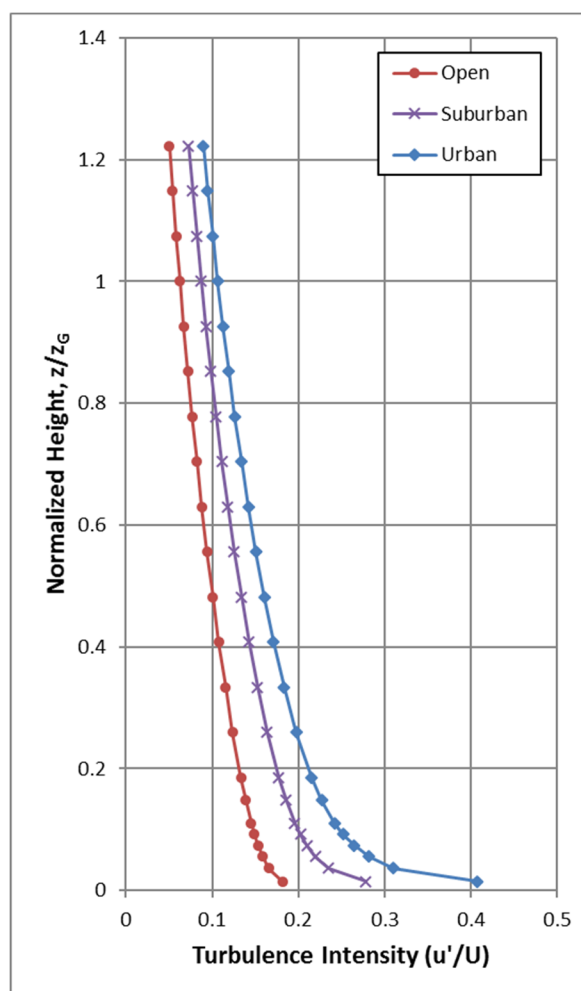


Figure A2: Turbulence Intensity Profiles

APPENDIX B

PEDESTRIAN LEVEL WIND MEASUREMENT METHODOLOGY

The information contained within this appendix is offered to provide a greater understanding of the relationship between the physical wind tunnel testing method and virtual computer-based simulations

PEDESTRIAN LEVEL WIND MEASUREMENT METHODOLOGY

Pedestrian level wind studies are performed in a wind tunnel on a physical model of the study buildings at a suitable scale. Instantaneous wind speed measurements are recorded at a model height corresponding to 1.5 m full scale using either a hot wire anemometer or a pressure-based transducer. Measurements are performed at any number of locations on the model and usually for 36 wind directions. For each wind direction, the roughness of the upwind terrain is matched in the wind tunnel to generate the correct mean and turbulent wind profiles approaching the model.

The hot wire anemometer is an instrument consisting of a thin metallic wire conducting an electric current. It is an omni-directional device equally sensitive to wind approaching from any direction in the horizontal plane. By compensating for the cooling effect of wind flowing over the wire, the associated electronics produce an analog voltage signal that can be calibrated against velocity of the air stream. For all measurements, the wire is oriented vertically so as to be sensitive to wind approaching from all directions in a horizontal plane.

The pressure sensor is a small cylindrical device that measures instantaneous pressure differences over a small area. The sensor is connected via tubing to a transducer that translates the pressure to a voltage signal that is recorded by computer. With appropriately designed tubing, the sensor is sensitive to a suitable range of fluctuating velocities.

For a given wind direction and location on the model, a time history of the wind speed is recorded for a period of time equal to one hour in full-scale. The analog signal produced by the hot wire or pressure sensor is digitized at a rate of 400 samples per second. A sample recording for several seconds is illustrated in Figure B. This data is analyzed to extract the mean, root-mean-square (rms) and the peak of the signal. The peak value, or gust wind speed, is formed by averaging a number of peaks obtained from sub-intervals of the sampling period. The mean and gust speeds are then normalized by the wind tunnel gradient wind speed, which is the speed at the top of the model boundary layer, to obtain mean and gust ratios. At each location, the measurements are repeated for 36 wind directions to produce normalized polar plots, which will be provided upon request.

In order to determine the duration of various wind speeds at full-scale for a given measurement location the gust ratios are combined with a statistical (mathematical) model of the wind climate for the project

site. This mathematical model is based on hourly wind data obtained from one or more meteorological stations (usually airports) close to the project location. The probability model used to represent the data is the Weibull distribution expressed as:

$$P(> U_g) = A_{\theta} \cdot \exp \left[- \left(\frac{U_g}{C_{\theta}} \right)^{K_{\theta}} \right]$$

Where,

$P(> U_g)$ is the probability, fraction of time, that the gradient wind speed U_g is exceeded; θ is the wind direction measured clockwise from true north, A, C, K are the Weibull coefficients, (Units: A - dimensionless, C - wind speed units [km/h] for instance, K - dimensionless). A_{θ} is the fraction of time wind blows from a 10° sector centered on θ .

Analysis of the hourly wind data recorded for a length of time, on the order of 10 to 30 years, yields the A_{θ} , C_{θ} and K_{θ} values. The probability of exceeding a chosen wind speed level, say 20 km/h, at sensor N is given by the following expression:

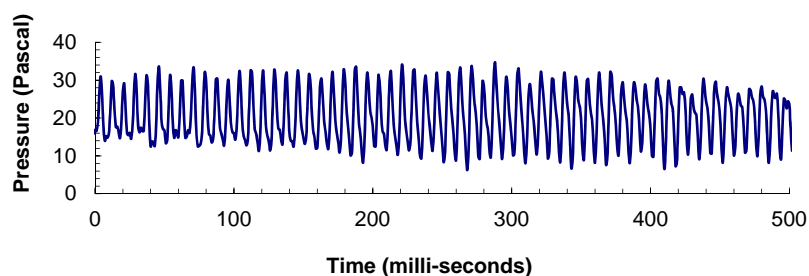
$$P_N(> 20) = \sum_{\theta} P \left[\frac{(> 20)}{\left(\frac{U_N}{U_g} \right)} \right]$$

$$P_N(> 20) = \sum_{\theta} P \{ > 20 / (U_N / U_g) \}$$

Where, U_N / U_g is the aforementioned normalized gust velocity ratios where the summation is taken over all 36 wind directions at 10° intervals.

If there are significant seasonal variations in the weather data, as determined by inspection of the C_{θ} and K_{θ} values, then the analysis is performed separately for two or more times corresponding to the groupings of seasonal wind data. Wind speed levels of interest for predicting pedestrian comfort are based on the comfort guidelines chosen to represent various pedestrian activity levels as discussed in the main text.

FIGURE B: TIME VERSUS VELOCITY TRACE FOR A TYPICAL WIND SENSOR



REFERENCES

1. Davenport, A.G., '*The Dependence of Wind Loading on Meteorological Parameters*', Proc. of Int. Res. Seminar, Wind Effects On Buildings & Structures, NRC, Ottawa, 1967, University of Toronto Press.
2. Wu, S., Bose, N., '*An extended power law model for the calibration of hot-wire/hot-film constant temperature probes*', Int. J. of Heat Mass Transfer, Vol.17, No.3, pp.437-442, Pergamon Press.