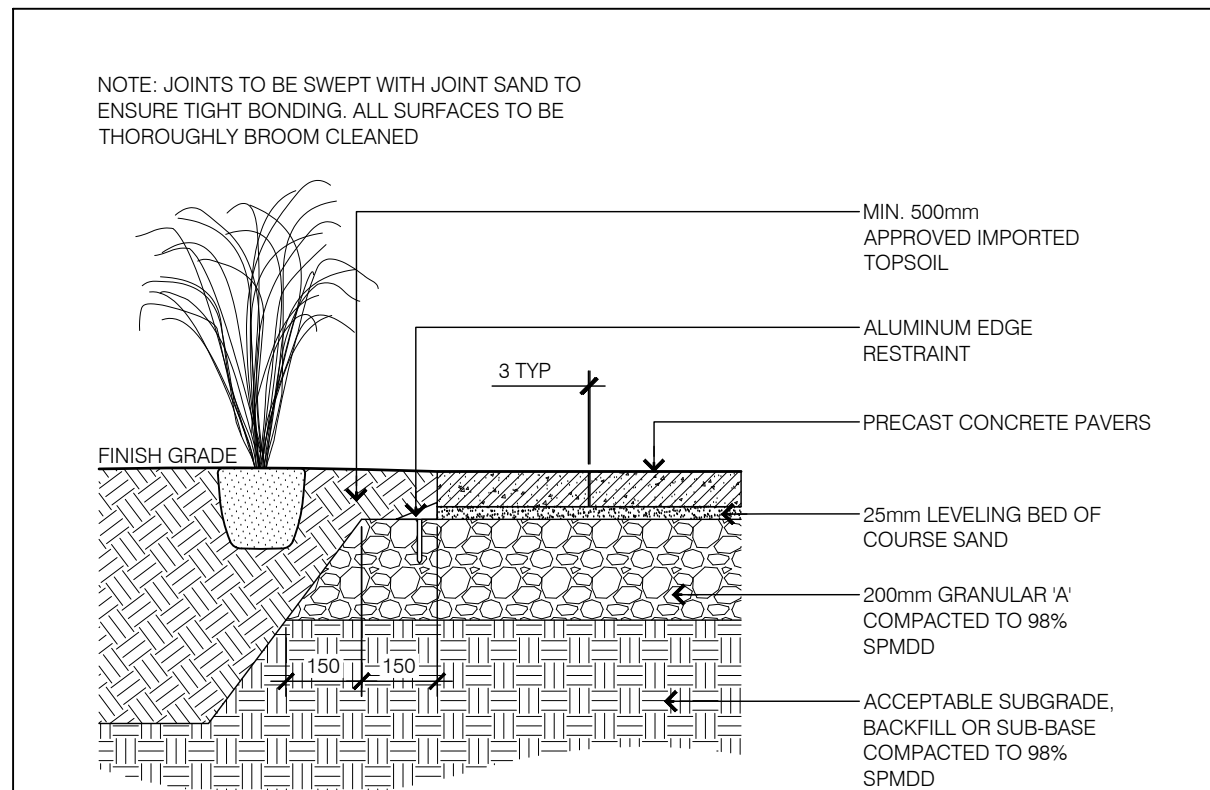
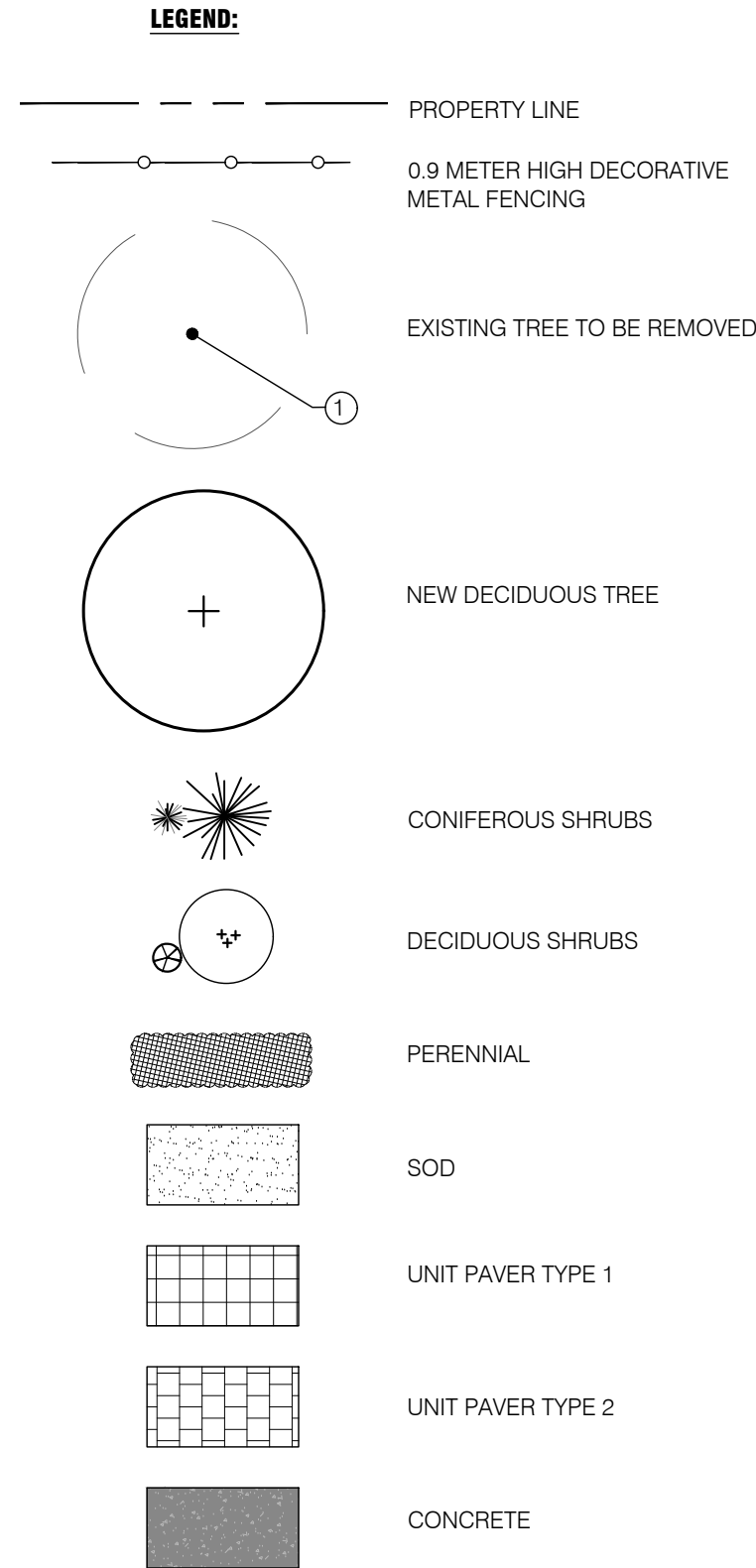


1 L-1 LAYOUT PLAN

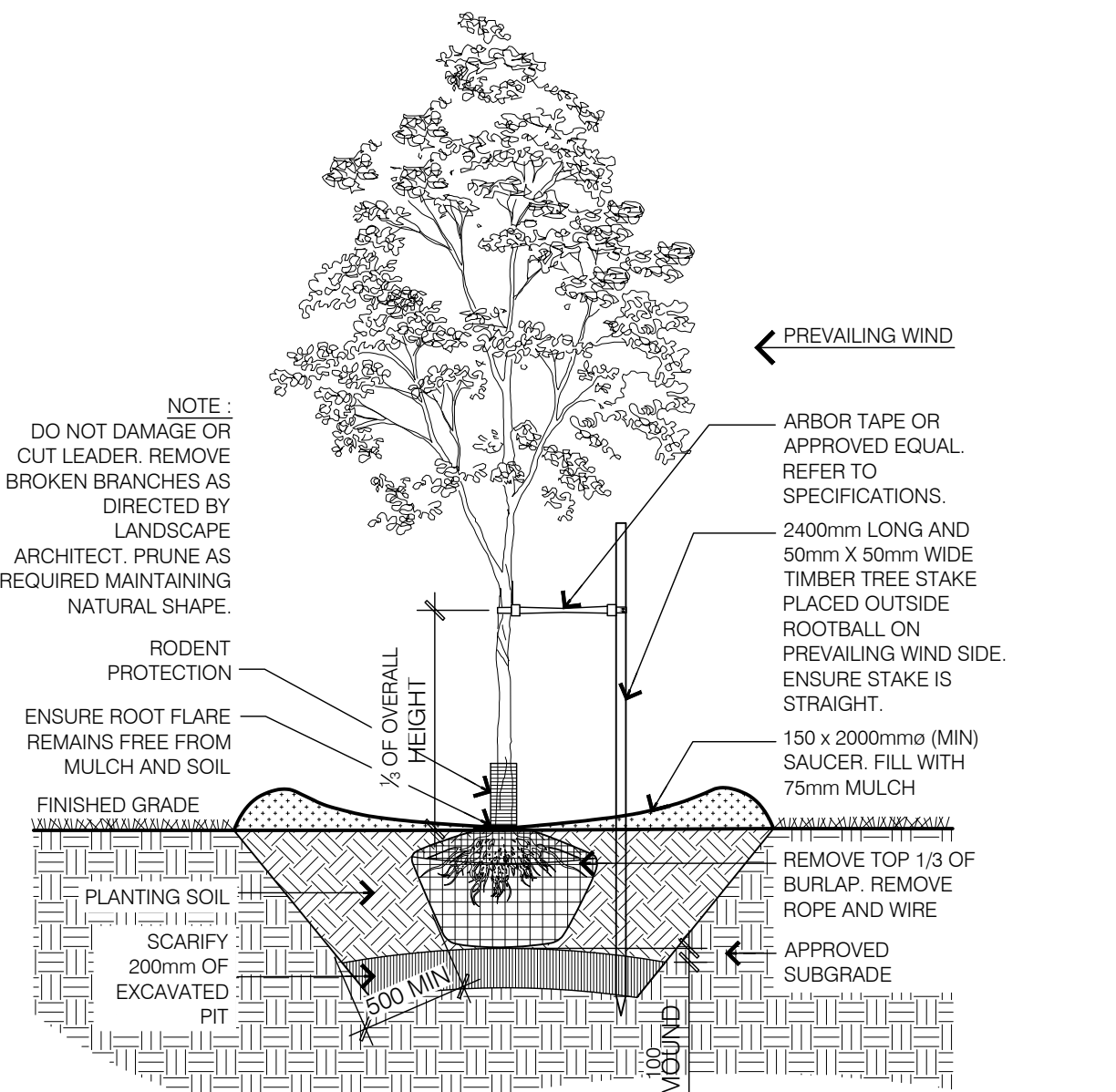


6 L-1 PATIO PAVERS

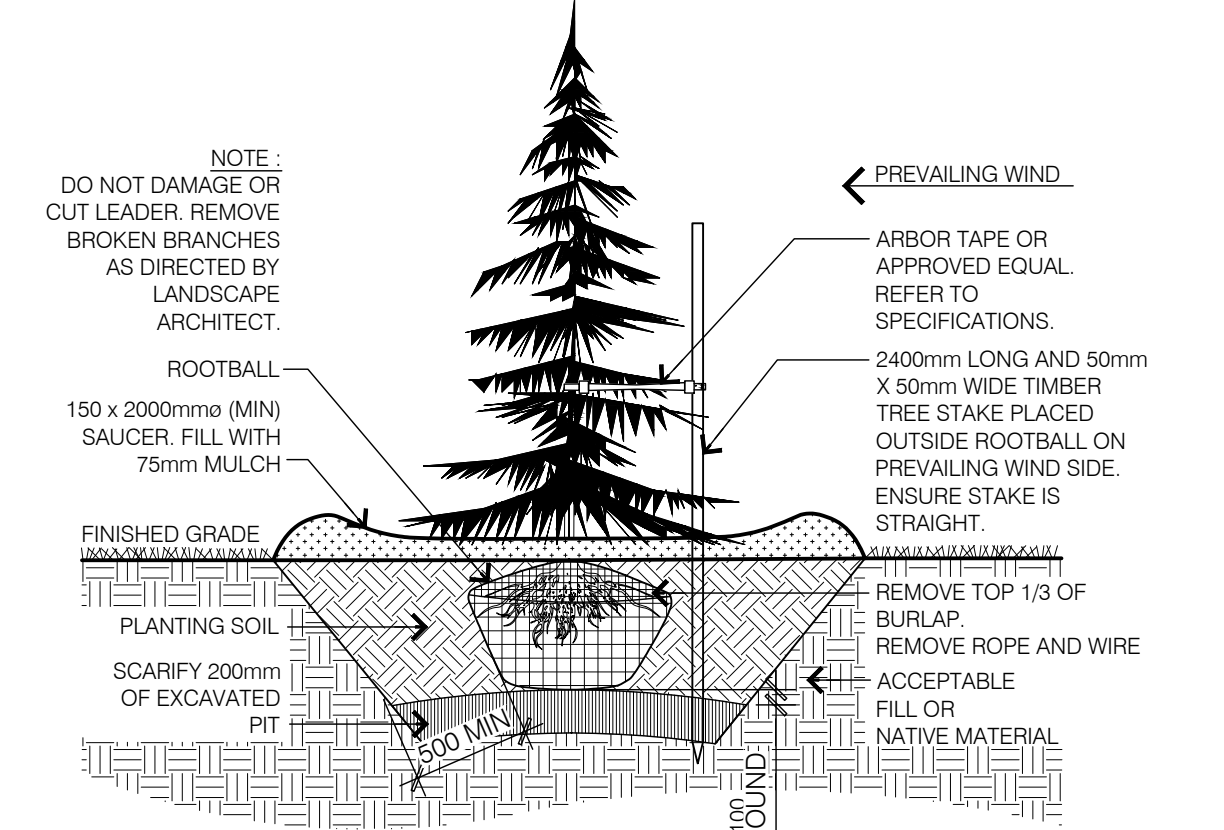
GENERAL PLANT LIST					
KEY	QTY	BOTANICAL NAME	COMMON NAME	SIZE	COMMENTS
DECIDUOUS TREES					
Co	2	Celtis occidentalis	Common Hackberry	250cm	POTTED
Gt	3	Gleditsia triacanthos var. inermis 'Shademaster'	Shademaster Honeylocust	250cm	POTTED
Ov	6	Ostrya virginiana	Ironwood	250cm	POTTED
SHRUBS					
Ac	5	Amelanchier canadensis	Serviceberry	7GAL	MULTI-STEM POTTED
De	9	Diervilla sessilifolia 'Cool splash'	Cool splash Honeysuckle	2GAL	POTTED
Ra	11	Rhus aromatica 'Gro-low'	Fragrant sumac 'Gro-low'	2GAL	POTTED
PERENNIALS					
Ho	14	Hosta Royal Standard	Plantain Lily	1GAL	POTTED
Gm	49	Geranium maculatum	Wild Geranium	1GAL	POTTED



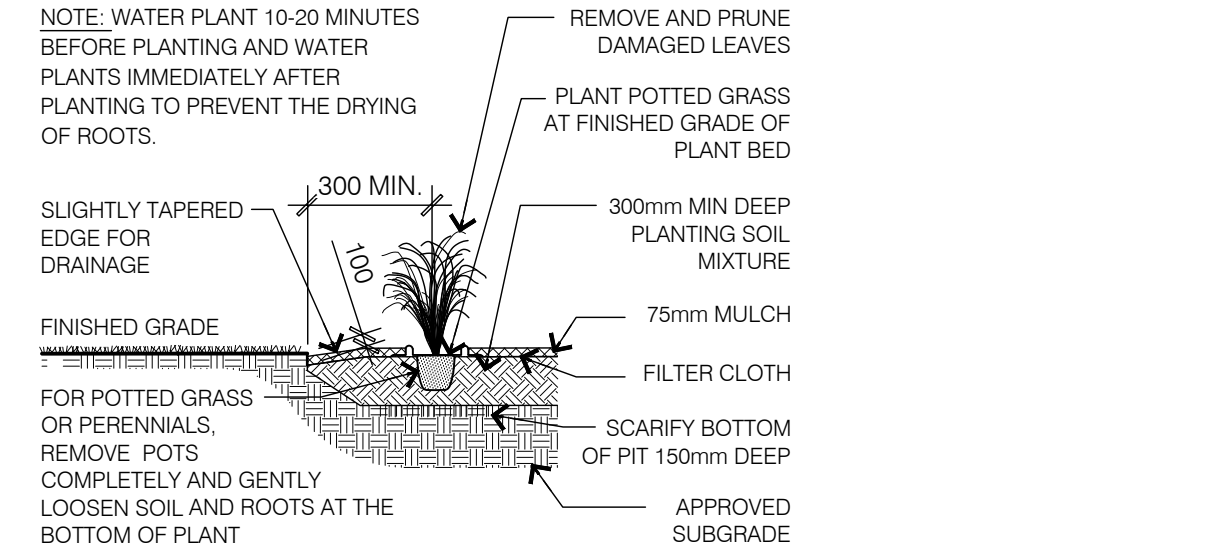
275 CARLING TREES TO BE REMOVED				
NO.	SPECIES	DBH (CM)	HEALTH	COMMENTS
1	Hackberry/ Celtis occidentalis	9	Good	
2	Hackberry/ Celtis occidentalis	10	Good	
3	Crimson King Norway Maple/ Acer platanoides 'Crimson King'	20	Fair	Wound in trunk and bowl
4	Crimson King Norway Maple/ Acer platanoides 'Crimson King'	20	Fair	Wound in trunk
5	Crimson King Norway Maple/ Acer platanoides 'Crimson King'	23	Fair	Wound in trunk
6	Crimson King Norway Maple/ Acer platanoides 'Crimson King'	25	Fair	Girdling roots
7	Crimson King Norway Maple/ Acer platanoides 'Crimson King'	28	Good	
8	Crimson King Norway Maple/ Acer platanoides 'Crimson King'	23	Fair	
9	Crimson King Norway Maple/ Acer platanoides 'Crimson King'	26	Fair	
10	Crimson King Norway Maple/ Acer platanoides 'Crimson King'	19	Fair	EAB
11	Crimson King Norway Maple/ Acer platanoides 'Crimson King'	21	Poor	Structural defects, interior rot, spalling bark
12	Crimson King Norway Maple/ Acer platanoides 'Crimson King'	22	Poor	Structural defects, interior rot, spalling bark
13	Siberian Elm/ Ulmus pumila	9, 10	Fair	2 stems joined at 15cm ht.
14	Manitoba Maple/ Acer negundo	18, 18, 21	Fair	Multi-stem, epicormic growth, dieback
15	Manitoba Maple/ Acer negundo	19	Fair	Dieback
16	Manitoba Maple/ Acer negundo	11, 14, 15, 17	Fair	Multi-stem, epicormic growth, dieback
17	Manitoba Maple/ Acer negundo	13, 21	Fair	Multi-stem, epicormic growth, dieback
18	Manitoba Maple/ Acer negundo	10, 15	Fair	Multi-stem, epicormic growth, dieback
19	Manitoba Maple/ Acer negundo	12, 15	Fair	Multi-stem, epicormic growth, dieback
20	Manitoba Maple/ Acer negundo	13	Fair	Epicormic growth, dieback
21	Manitoba Maple/ Acer negundo	13, 18	Fair	Multi-stem, epicormic growth, dieback
22	Manitoba Maple/ Acer negundo	16, 17	Fair	Multi-stem, epicormic growth, dieback



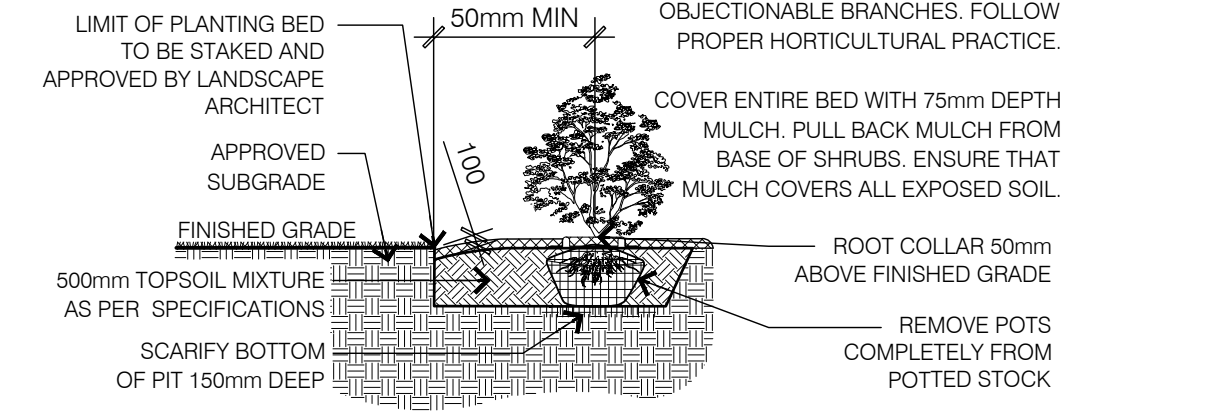
2 L-1 DECIDUOUS TREE PLANTING



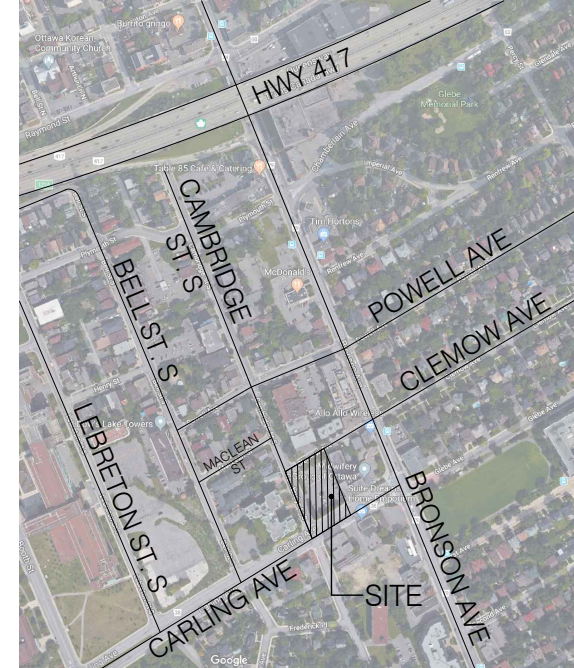
3 L-1 CONIFEROUS TREE PLANTING



4 L-1 PERENNIAL PLANTING



5 L-1 SHRUB PLANTING



KEY MAP, NTS

- L-1-1 GENERAL NOTES**
- All general site information and conditions compiled from architect's and engineer's plans and surveys.
  - Do not scale this drawing.
  - Report any discrepancies prior to commencing work. No responsibility is born by the Landscape Architect for unknown subsurface conditions.
  - Reinstate all areas and items damaged as a result of construction activities to the satisfaction of the Landscape Architect.
  - Drawing may not be used for construction until signed by Landscape Architect as issued for construction.
  - The accuracy of the position of utilities is not guaranteed.
  - Individual utility co. must be contacted for confirmation of utility existence and location prior to digging.
  - This drawing is an instrument of service and requires the permission of the Landscape Architect for use. Copyright is reserved by the Landscape Architect, David M. Lashley.

- L-1-1 LANDSCAPE NOTES**
- Plant material shall be No. 1 Grade and shall comply with the Metric Guide Specifications for Nursery stock (latest edition), published by Canadian Nursery Trades Association.
  - Plant substitutions shall not be permitted unless approved by the Landscape Architect.
  - Obtain approval of planting prior to digging.
  - Topsoil shall be garden silt mixture sandy loam with min. 5% organic matter and peat moss added at ratio of 1:10. Topsoil to be approved by Landscape Architect.

- SEEDING NOTES**
- Prior to applying seed mix remove all weeds and debris and scarify the topsoil to a depth of 25mm.
  - Fall sowing is recommended. If applied in late fall additional stratification of the seed is required.
  - Seed mixes to be provided by Ontario Seed Company Ltd. or approved equivalent and installed as per distributors specifications.
  - Seed mix to be applied in all areas disturbed by construction.

01	2018/05/28	Issued for Site Plan Submission

NO.	DATE	DESCRIPTION
SEAL:		NORTH:

**CONSULTANT:**

**LASHLEY & ASSOCIATES**  
LANDSCAPE ARCHITECTURE AND SITE ENGINEERING  
275 CARLING AVENUE, SUITE 200  
OTTAWA, ONTARIO K1V 1B8  
TEL: 613-833-1000  
WWW.LASHLEYA.COM

**PROJECT:**

**275 CARLING RETIREMENT RESIDENCE**  
CARLING AVENUE  
OTTAWA, ONTARIO

**DRAWING TITLE:**

**LANDSCAPE PLAN**

<b>DATE:</b>	2017/11/21	<b>DRAWING NO.:</b>	
<b>SCALE:</b>	As Shown		
<b>DRAWN BY:</b>	RP		
<b>LA PROJECT NO.</b>	17691-1		

**L-1**