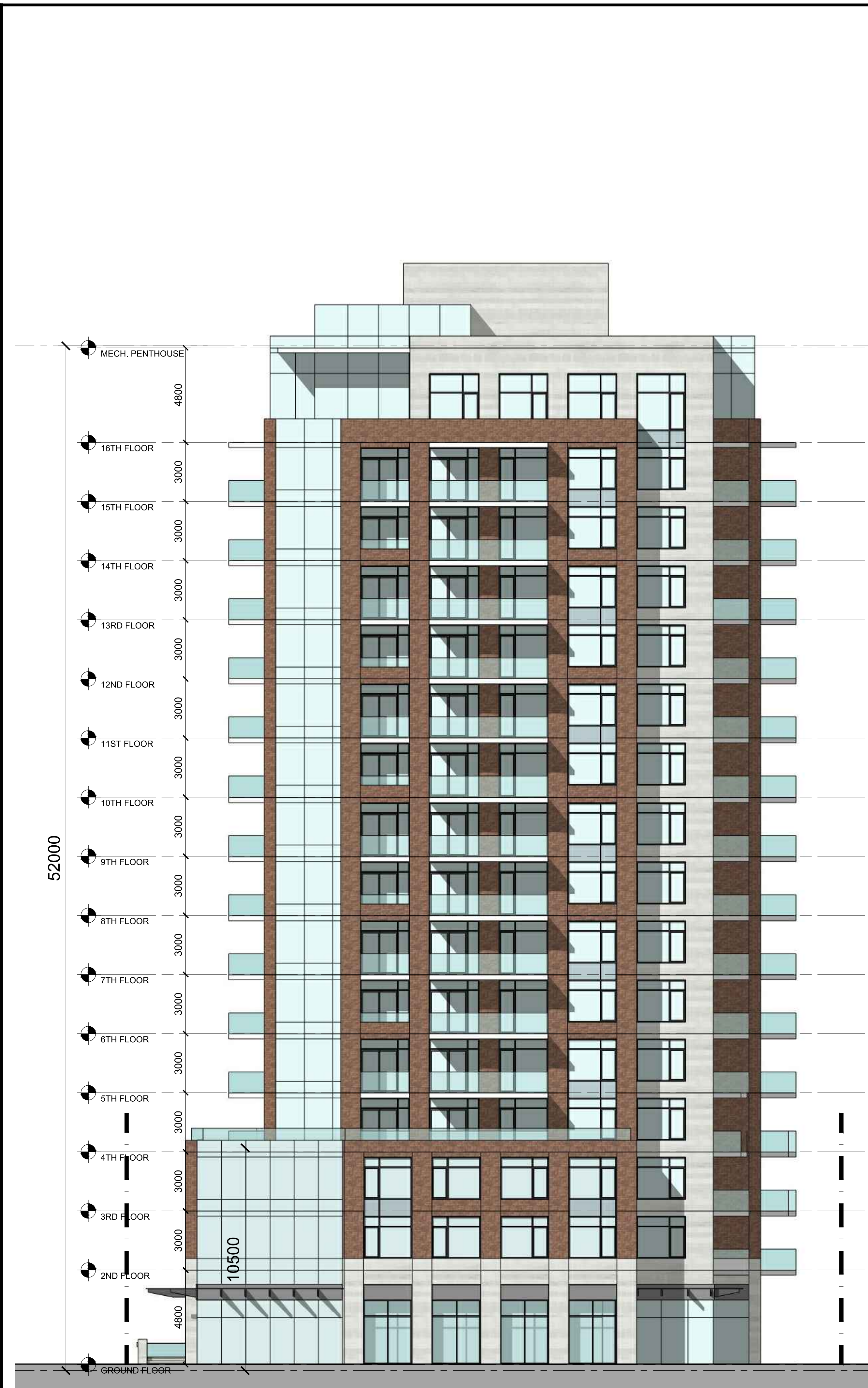


WEST ELEVATION



SOUTH ELEVATION

IT IS THE RESPONSIBILITY OF THE APPROPRIATE CONTRACTOR TO CHECK AND VERIFY ALL DIMENSIONS ON SITE AND TO REPORT ALL ERRORS AND/OR OMISSIONS TO THE ARCHITECT.  
 ALL CONTRACTORS MUST COMPLY WITH ALL PERTINENT CODES AND BY-LAWS.  
 THIS DRAWING MAY NOT BE USED FOR CONSTRUCTION UNTIL SIGNED BY THE ARCHITECT.  
 DO NOT SCALE DRAWINGS.  
 COPYRIGHT RESERVED.

**NOTATION SYMBOLS:**

|      |   |
|------|---|
| (N)  | INDICATES DRAWING NOTES, LISTED ON EACH SHEET.                                |
| (AS) | INDICATES ASSEMBLY TYPE; REFER TO TYPICAL ASSEMBLIES SCHEDULE.                |
| (W)  | INDICATES WINDOW TYPE; REFER TO WINDOW ELEVATIONS AND DETAILS ON A900 SERIES. |
| (D)  | INDICATES DOOR TYPE; REFER TO DOOR SCHEDULE AND DETAILS ON A900 SERIES.       |
| (T)  | TITLE   |
| (R)  | SCALE   |
| (P)  | DETAIL REFERENCE PAGE   |
| (C)  | DETAIL CROSS REFERENCE PAGE   |

- GENERAL NOTES:**
- (A) REFER TO TYPICAL ASSEMBLIES SHEET FOR WALL, PARTITION, ROOF CEILING & FLOOR TYPES.
  - (B) FOR DOOR TYPES AND HARDWARE REQUIREMENTS REFER TO DOOR SCHEDULE ON A900 SERIES.
  - (C) ALL INTERIOR DIMENSIONS ARE TAKEN FROM THE FACE OF DRYWALL.
  - (D) ALL EXTERIOR DIMENSIONS ARE TAKEN FROM THE FACE OF CLADDING.
  - (E) ALL EXTERIOR WALLS ARE TO BE TYPE 'W1' UNLESS NOTED OTHERWISE.
  - (F) ALL INTERIOR PARTITIONS ARE TO BE TYPE 'P1' UNLESS NOTED OTHERWISE.

| No. | DESCRIPTION                        | DATE        |
|-----|------------------------------------|-------------|
| 1   | ISSUED FOR S.P.C. APPLICATION      | July 27, 18 |
| 2   | REVISED DESIGN - COMMUNITY MEETING | Sept 21, 17 |
| 3   | ISSUED FOR - COMMUNITY MEETING     | Oct 4, 16   |
| 4   | O.M.B. HEARING                     | Mar 4, 13   |
| 5   | REVISED RAMP LOCATION              | Mar 4, 13   |
| 6   | ISSUED FOR ZONING REPORT           | Jan 15, 13  |
| 7   | ISSUED FOR ZONING AMENDMENT        | Mar 28, 12  |

REVISIONS:

ARCHITECT SEAL:

NORTH ARROW:

CLIENT:

**TAMARACK**  
TAMARACKHOMES.COM

ARCHITECT:  
**rla/architecture**  
roderick lahey architect inc.  
56 beech street, ottawa, ontario k1s 3j6  
t. 613.724.9932 f. 613.724.1209 rlaarchitecture.ca

PROJECT TITLE:  
**275 CARLING AVENUE**  
**CARLING @ CAMBRIDGE**  
OTTAWA ONTARIO

SHEET TITLE:  
**BUILDING ELEVATIONS**

|                     |                          |
|---------------------|--------------------------|
| DRAWN:<br>RV        | CHECKED:<br>R.L.A.       |
| SCALE:<br>1:125     | SHEET No.<br><b>A-07</b> |
| PROJECT No.<br>1628 |                          |