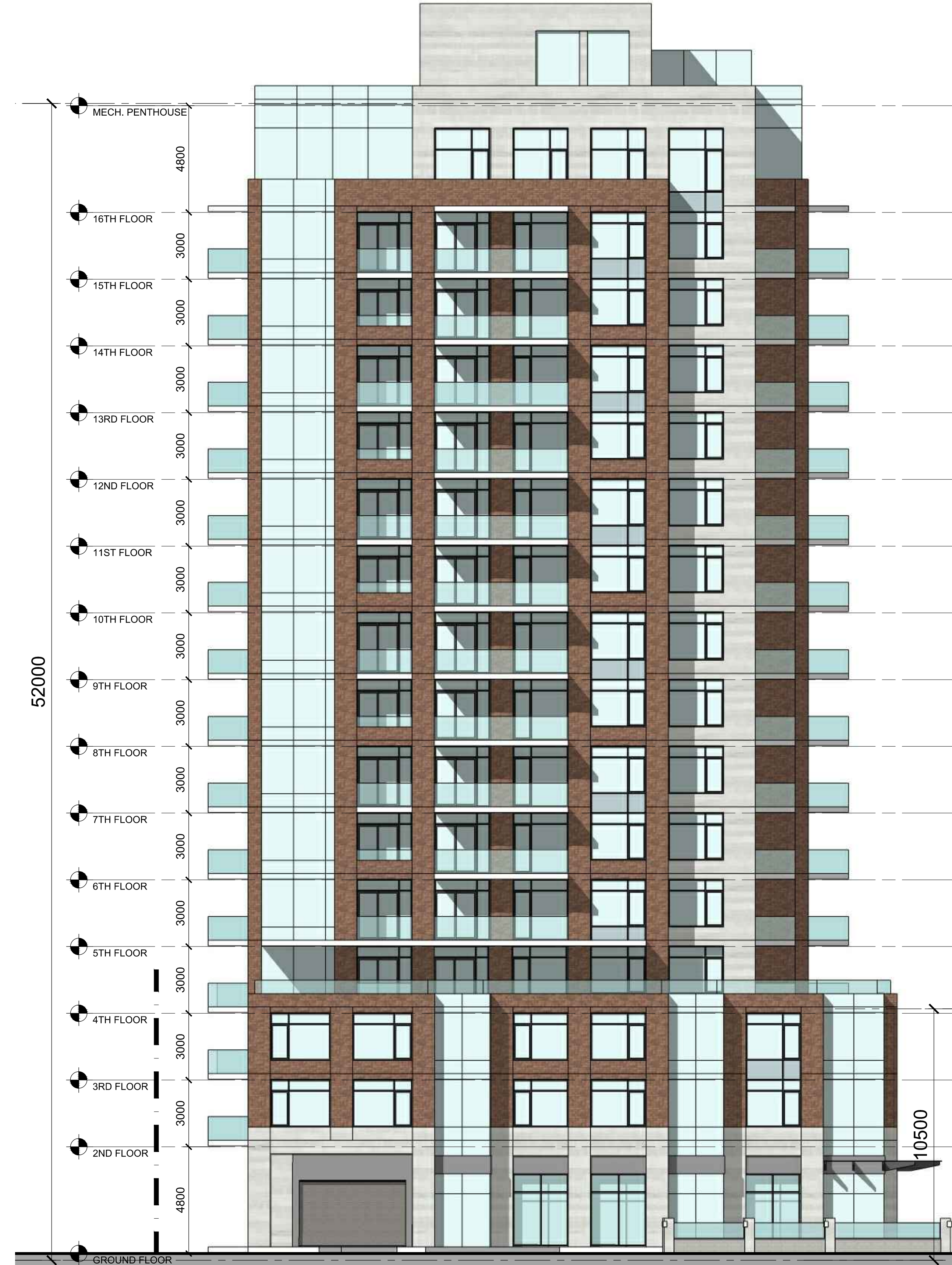


EAST ELEVATION



NORTH ELEVATION

IT IS THE RESPONSIBILITY OF THE APPROPRIATE CONTRACTOR TO CHECK AND VERIFY ALL DIMENSIONS ON SITE AND TO REPORT ALL ERRORS AND/OR OMISSIONS TO THE ARCHITECT.
 ALL CONTRACTORS MUST COMPLY WITH ALL PERTINENT CODES AND BY-LAWS.
 THIS DRAWING MAY NOT BE USED FOR CONSTRUCTION UNTIL SIGNED BY THE ARCHITECT.
 DO NOT SCALE DRAWINGS.
 COPYRIGHT RESERVED.

NOTATION SYMBOLS:

- (N) INDICATES DRAWING NOTES, LISTED ON EACH SHEET.
- (AS) INDICATES ASSEMBLY TYPE; REFER TO TYPICAL ASSEMBLIES SCHEDULE.
- (W) INDICATES WINDOW TYPE; REFER TO WINDOW ELEVATIONS AND DETAILS ON A900 SERIES.
- (D) INDICATES DOOR TYPE; REFER TO DOOR SCHEDULE AND DETAILS ON A900 SERIES.
- (T) TITLE
- (S) SCALE
- (R) DETAIL REFERENCE PAGE
- (C) DETAIL CROSS REFERENCE PAGE

- GENERAL NOTES:**
- (A) REFER TO TYPICAL ASSEMBLIES SHEET FOR WALL, PARTITION, ROOF CEILING & FLOOR TYPES.
 - (B) FOR DOOR TYPES AND HARDWARE REQUIREMENTS REFER TO DOOR SCHEDULE ON A900 SERIES.
 - (C) ALL INTERIOR DIMENSIONS ARE TAKEN FROM THE FACE OF DRYWALL.
 - (D) ALL EXTERIOR DIMENSIONS ARE TAKEN FROM THE FACE OF CLADDING.
 - (E) ALL EXTERIOR WALLS ARE TO BE TYPE 'W1' UNLESS NOTED OTHERWISE.
 - (F) ALL INTERIOR PARTITIONS ARE TO BE TYPE 'P1' UNLESS NOTED OTHERWISE.

No.	DESCRIPTION	DATE
1	ISSUED FOR S.P.C. APPLICATION	July 27, 18
2	REVISED DESIGN - COMMUNITY MEETING	Sept 21, 17
3	ISSUED FOR - COMMUNITY MEETING	Oct 4, 16
4	O.M.B. HEARING	Mar 4, 13
5	REVISED RAMP LOCATION	Mar 4, 13
6	ISSUED FOR ZONING REPORT	Jan 15, 13
7	ISSUED FOR ZONING AMENDMENT	Mar 28, 12

REVISIONS:

ARCHITECT SEAL:

SEAL DATE: STAMP DATE

CLIENT:

NORTH ARROW:



ARCHITECT:
 rla/architecture
 roderick lahey architect inc.
 56 beech street, ottawa, ontario K1S 3J6
 t: 613.724.9932 f: 613.724.1209 rlaarchitecture.ca

PROJECT TITLE:
 275 CARLING AVENUE
 CARLING @ CAMBRIDGE
 OTTAWA ONTARIO

BUILDING ELEVATIONS

DRAWN: RV	CHECKED: R.L.A.
SCALE: 1:125	SHEET No. A-06
PROJECT No. 1628	