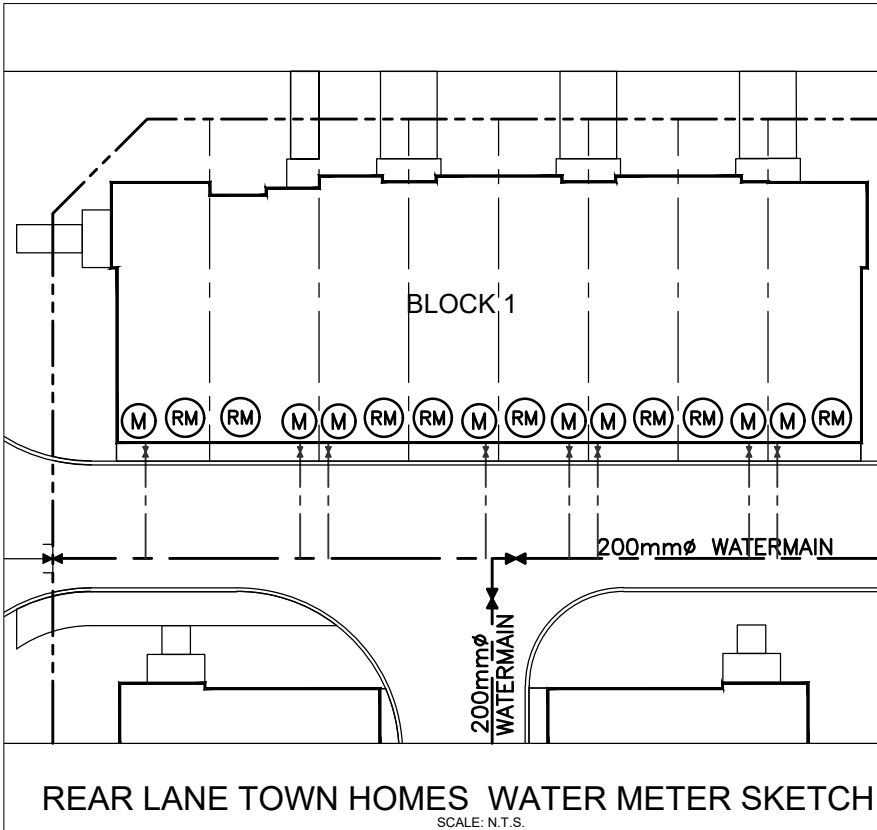
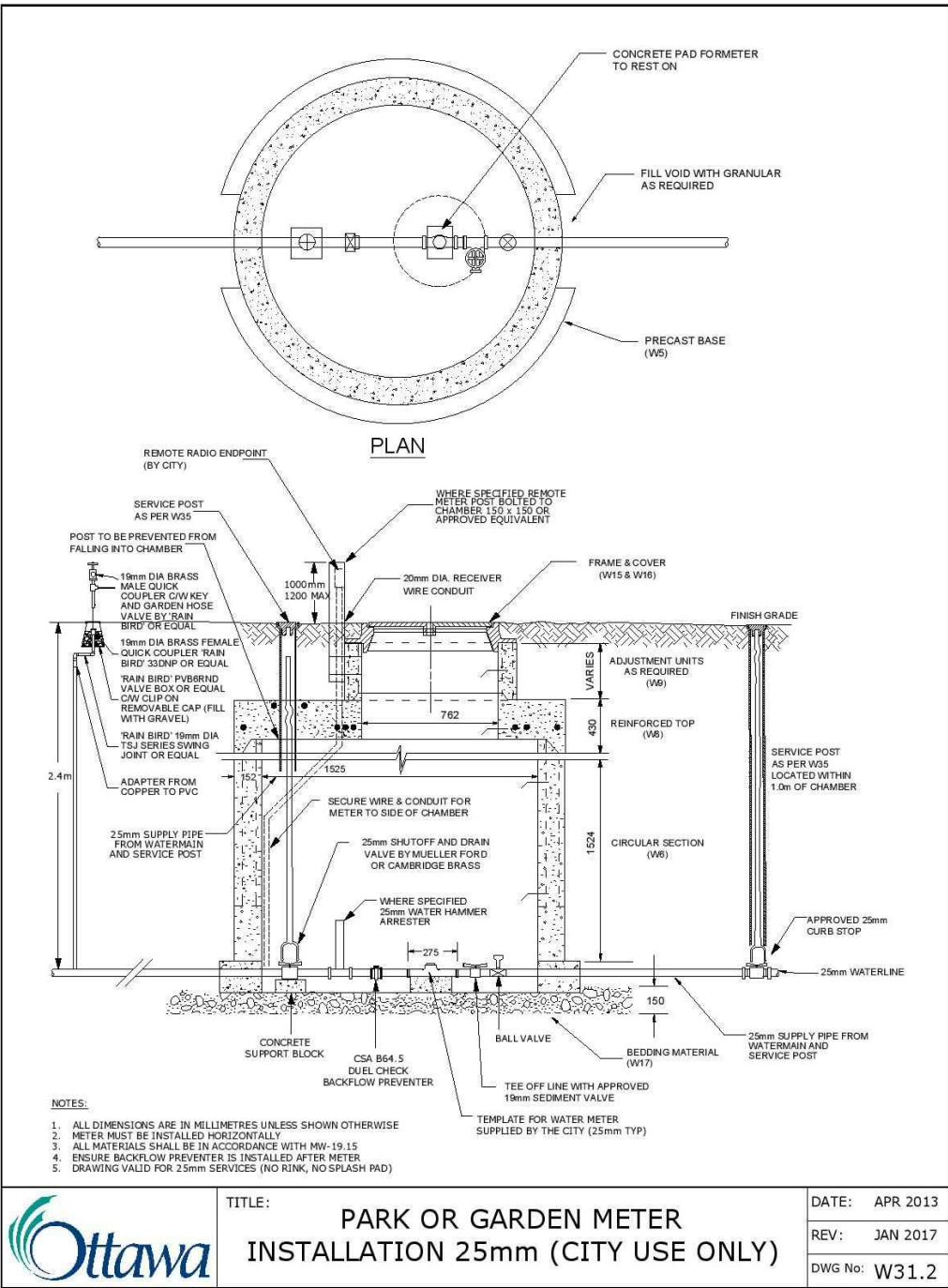


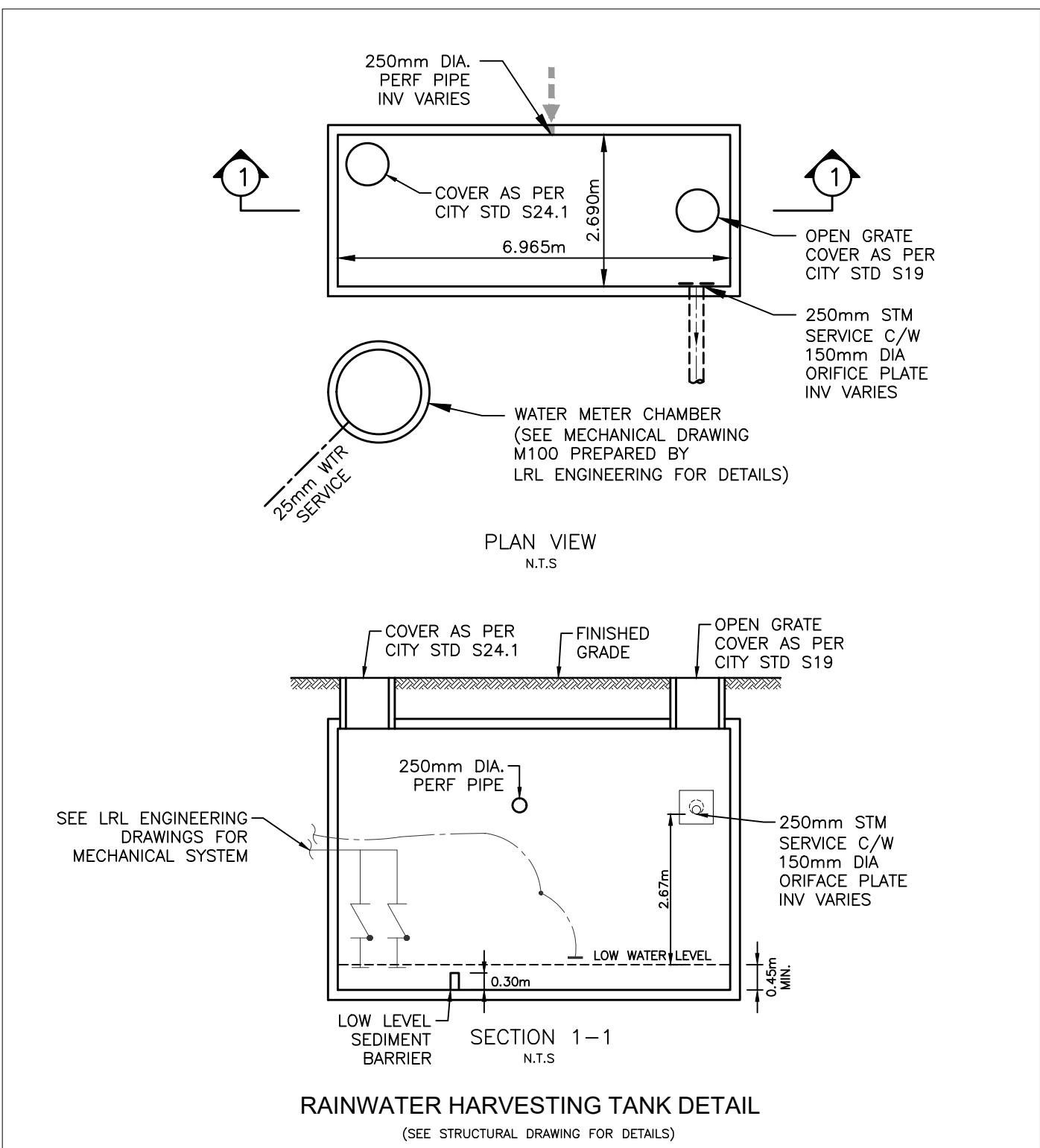
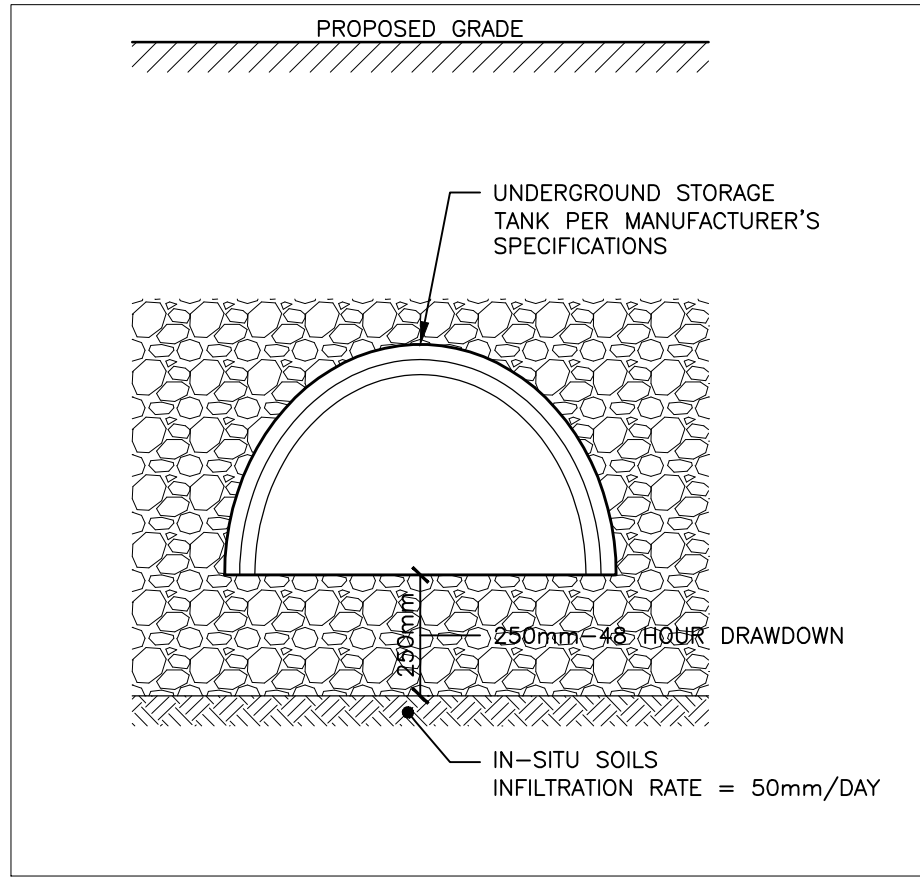
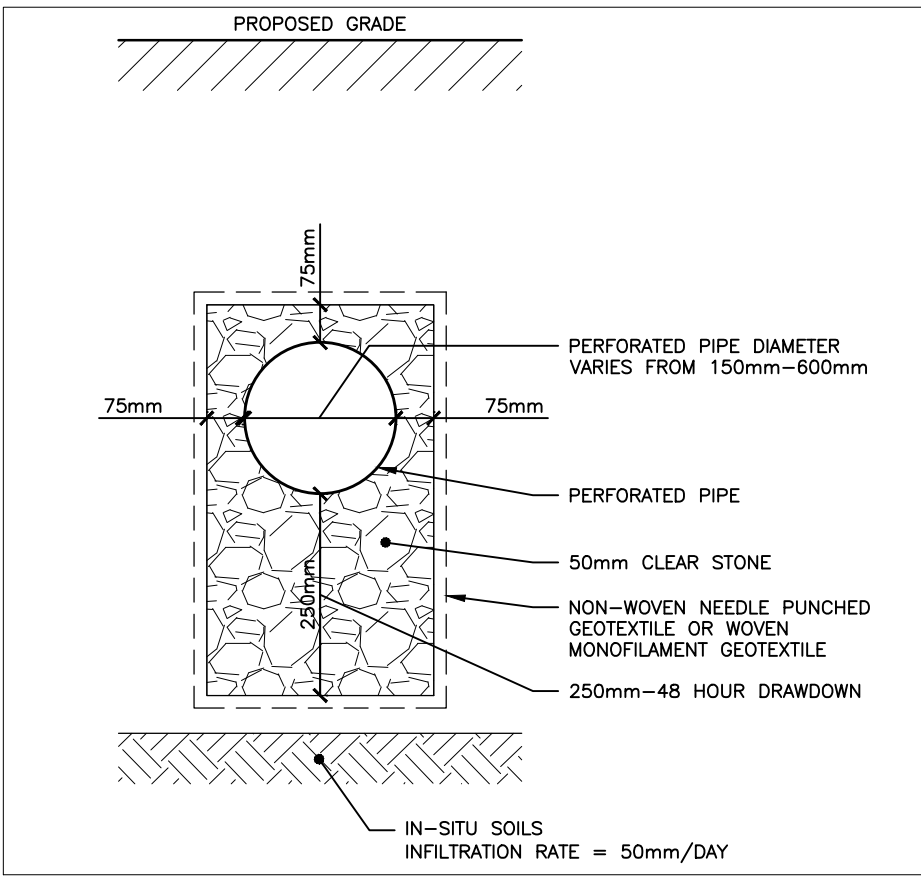
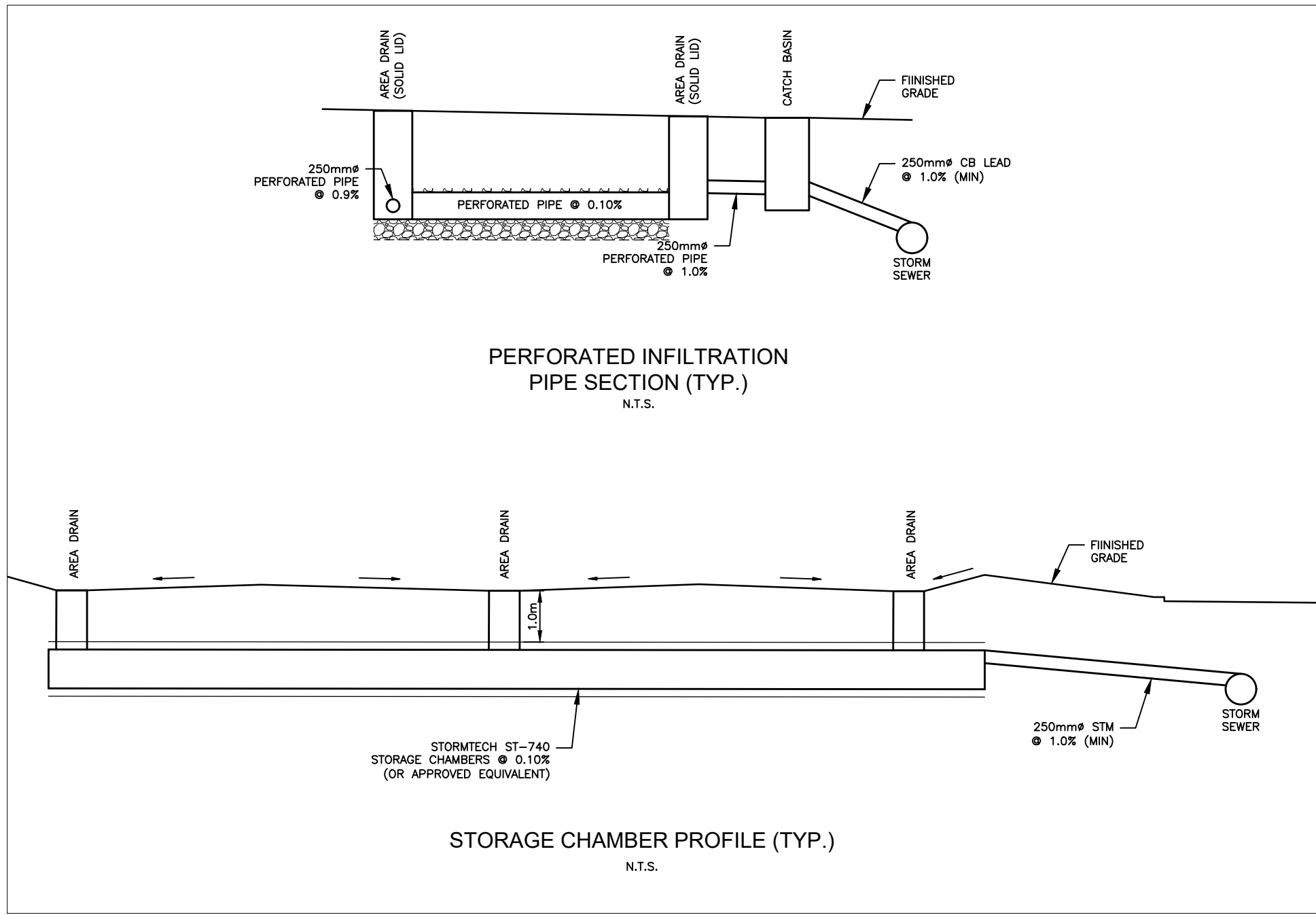
BACK TO BACK TOWN HOMES WATER METER SKETCH  
SCALE: N.T.S.



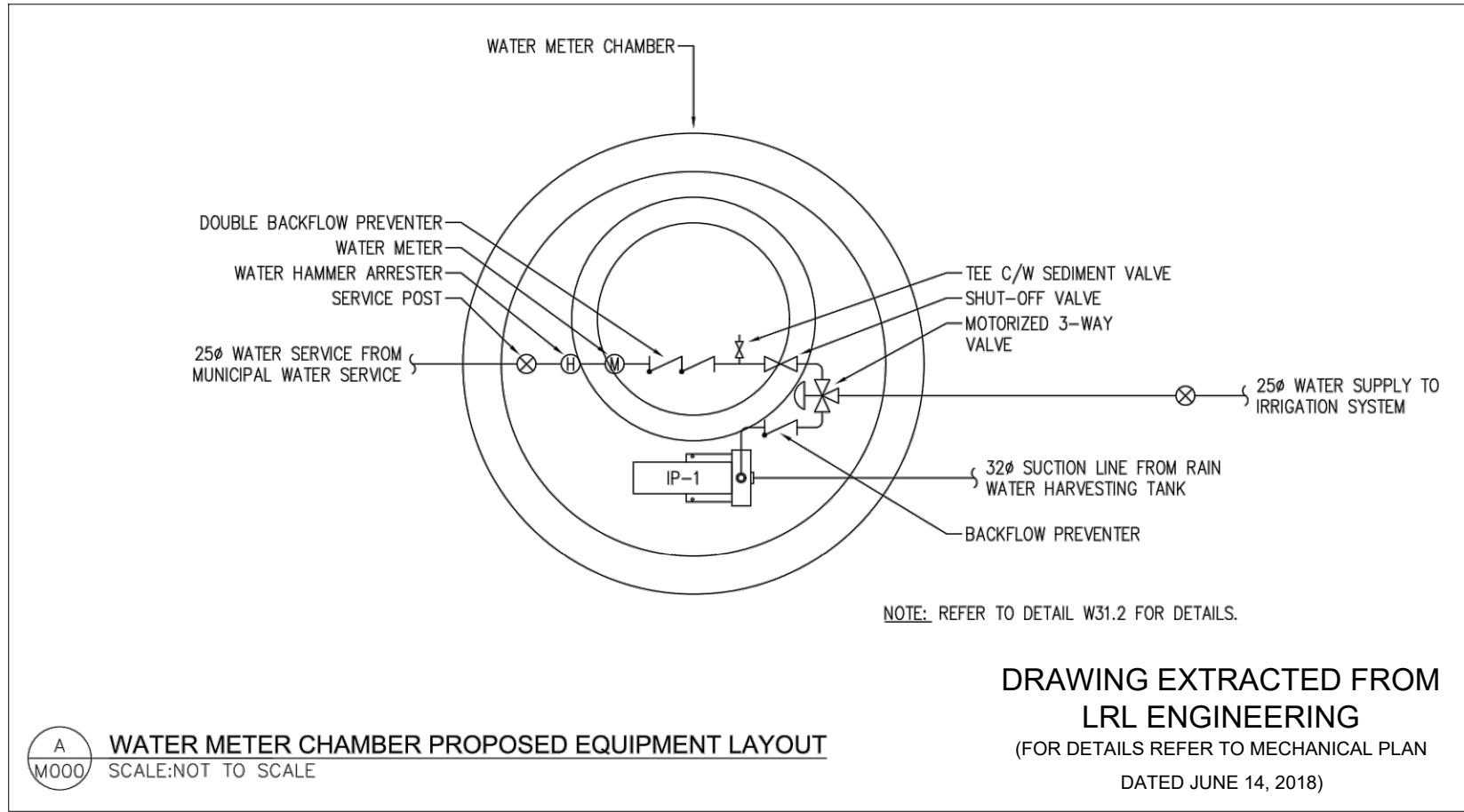
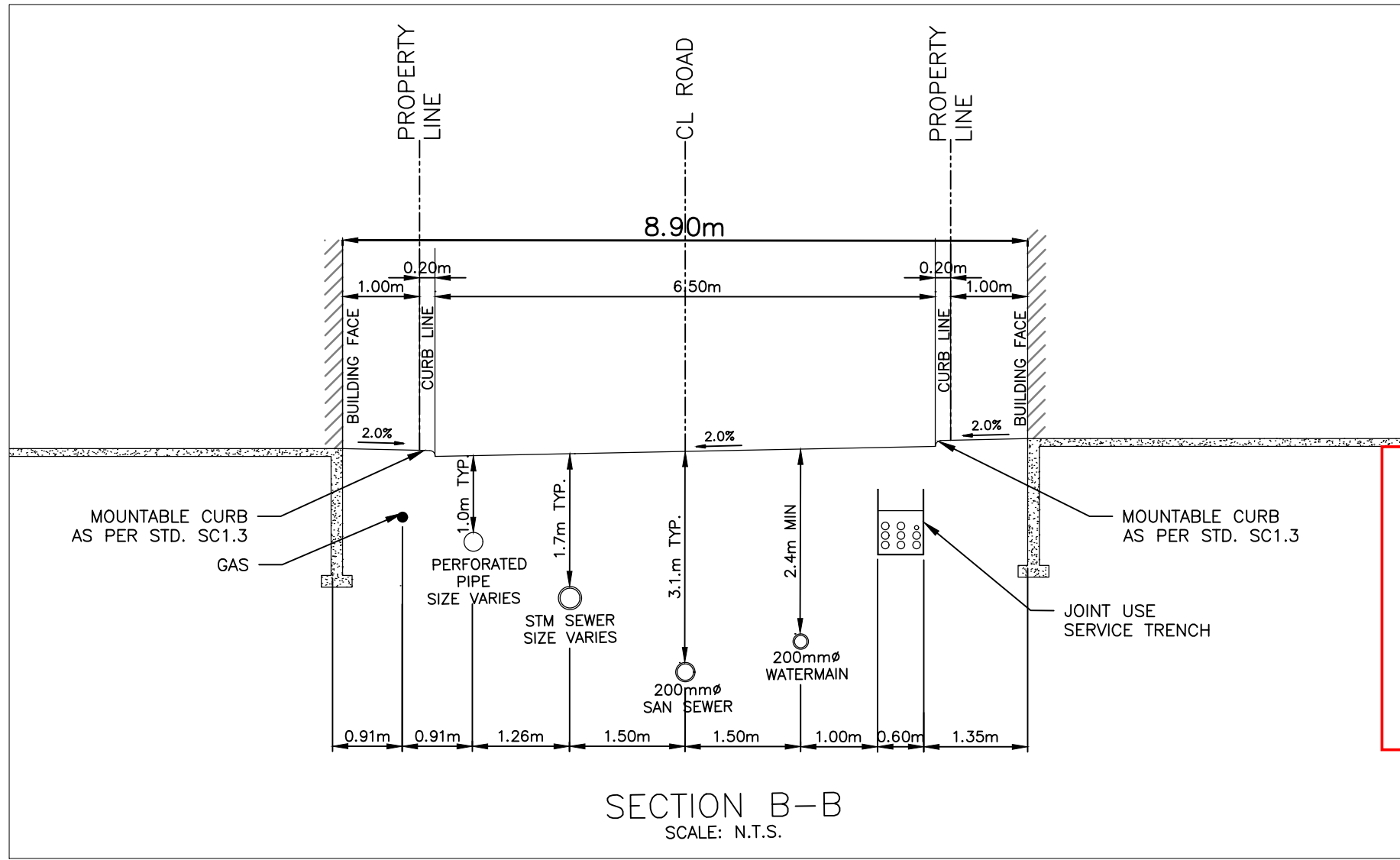
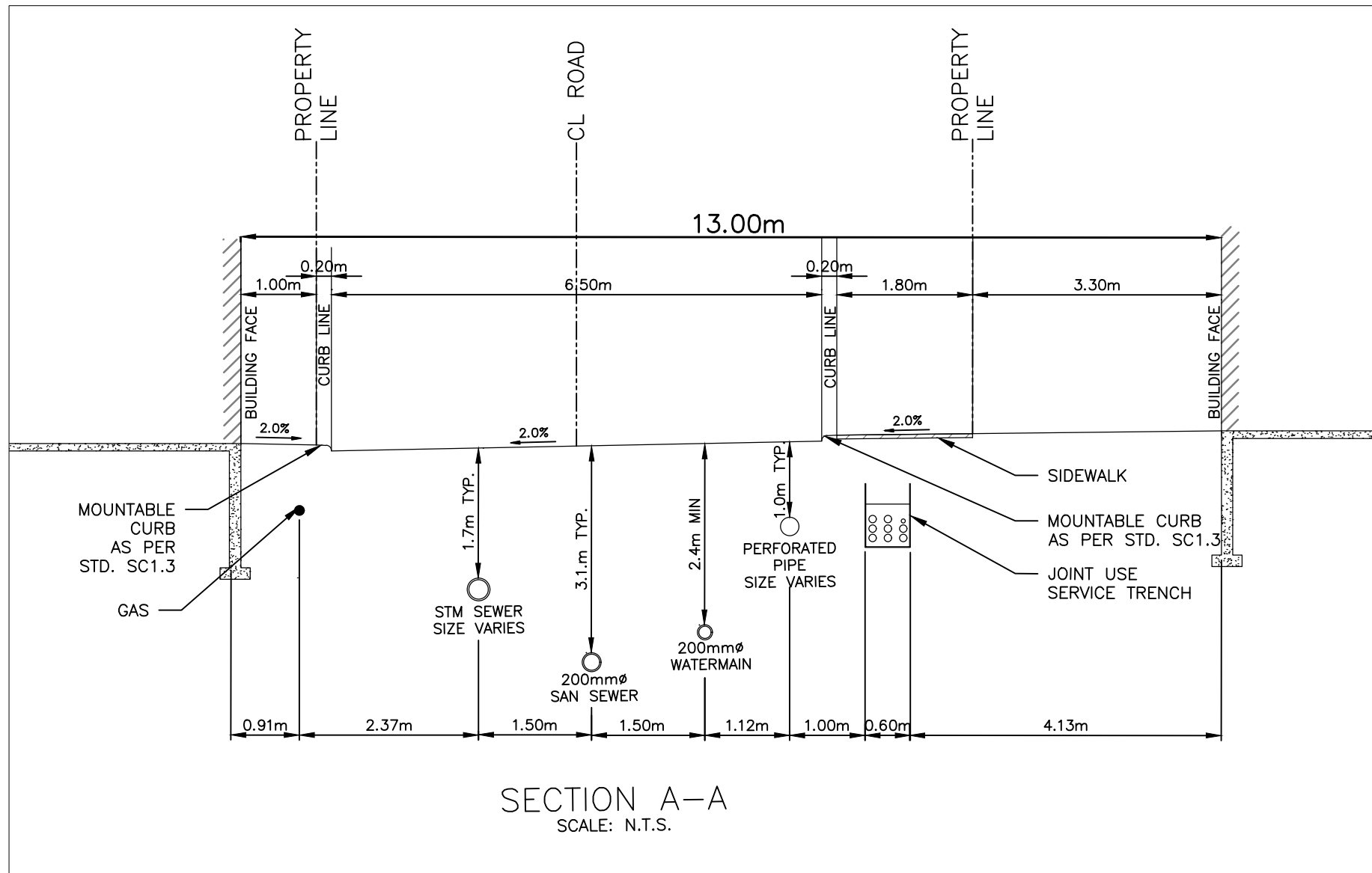
REAR LANE TOWN HOMES WATER METER SKETCH  
SCALE: N.T.S.



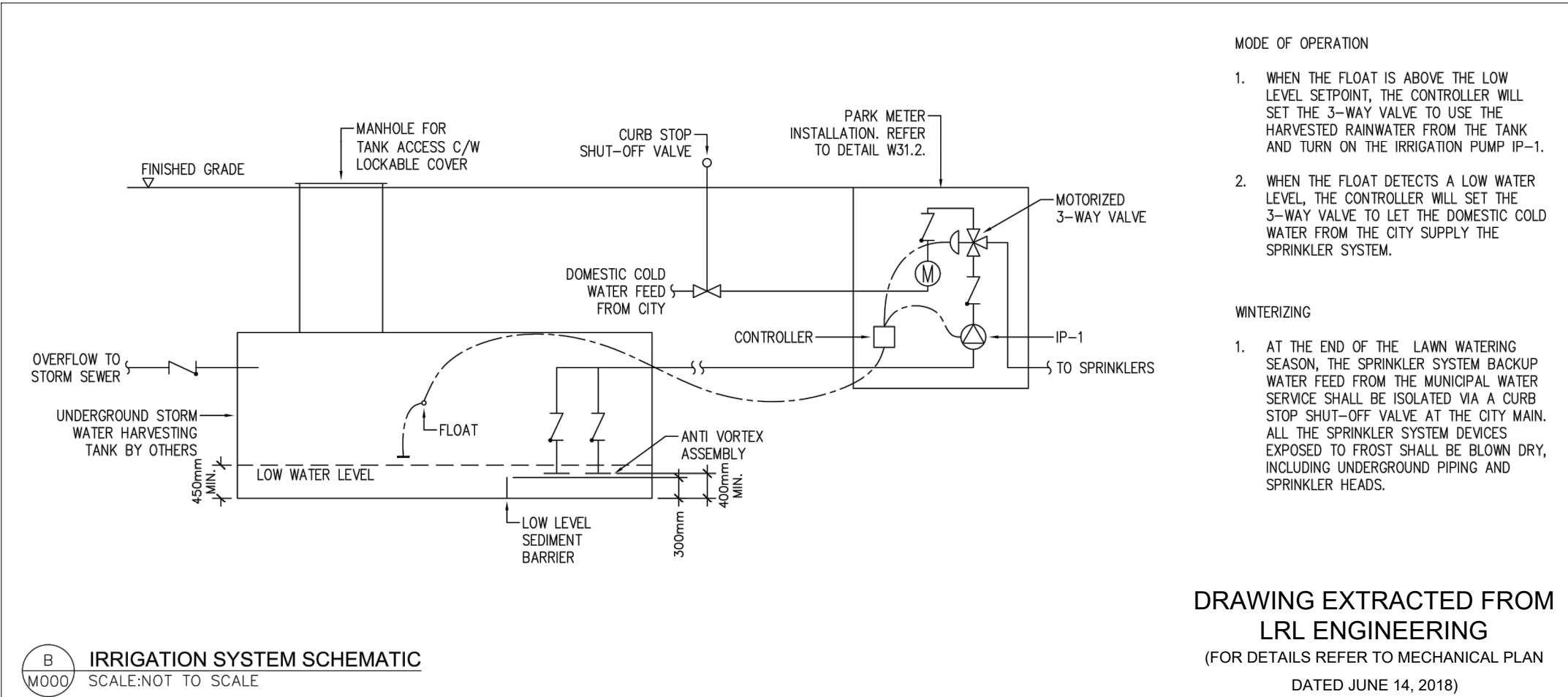
TITLE: PARK OR GARDEN METER  
INSTALLATION 25mm (CITY USE ONLY)  
DATE: APR 2013  
REV: JAN 2017  
DWG NO: W31.2



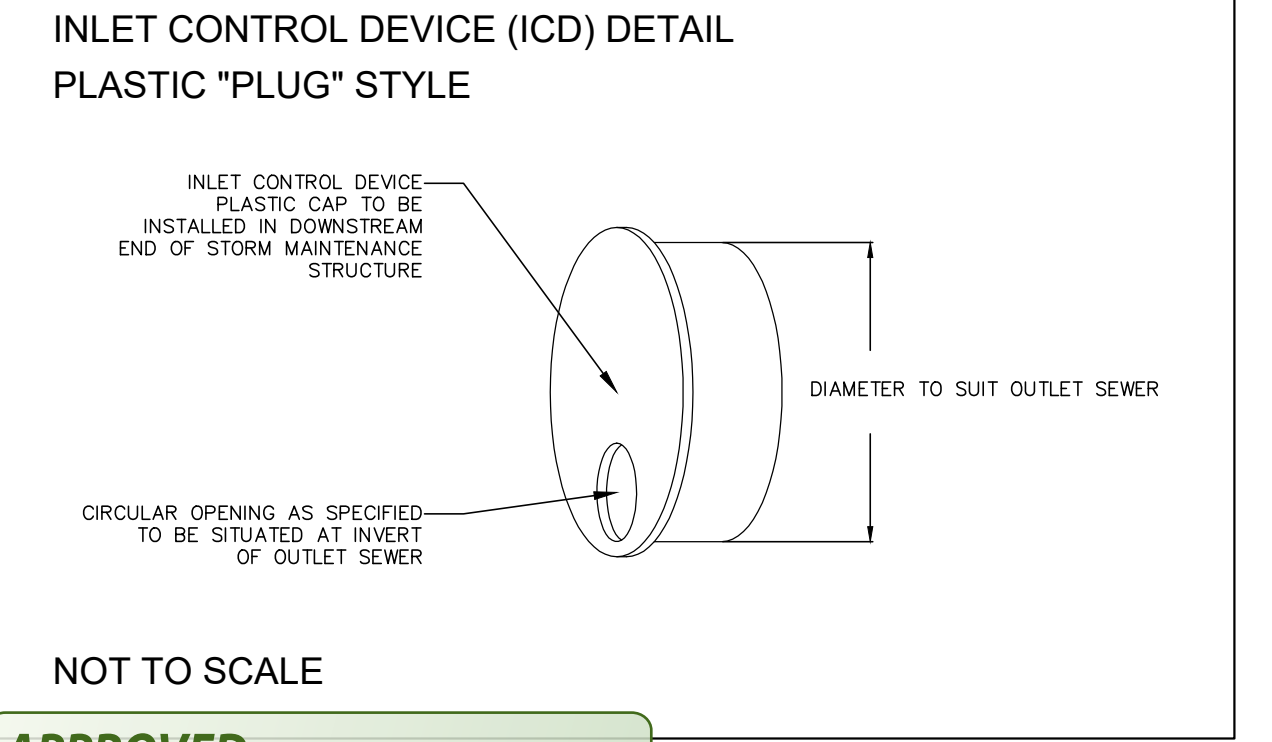
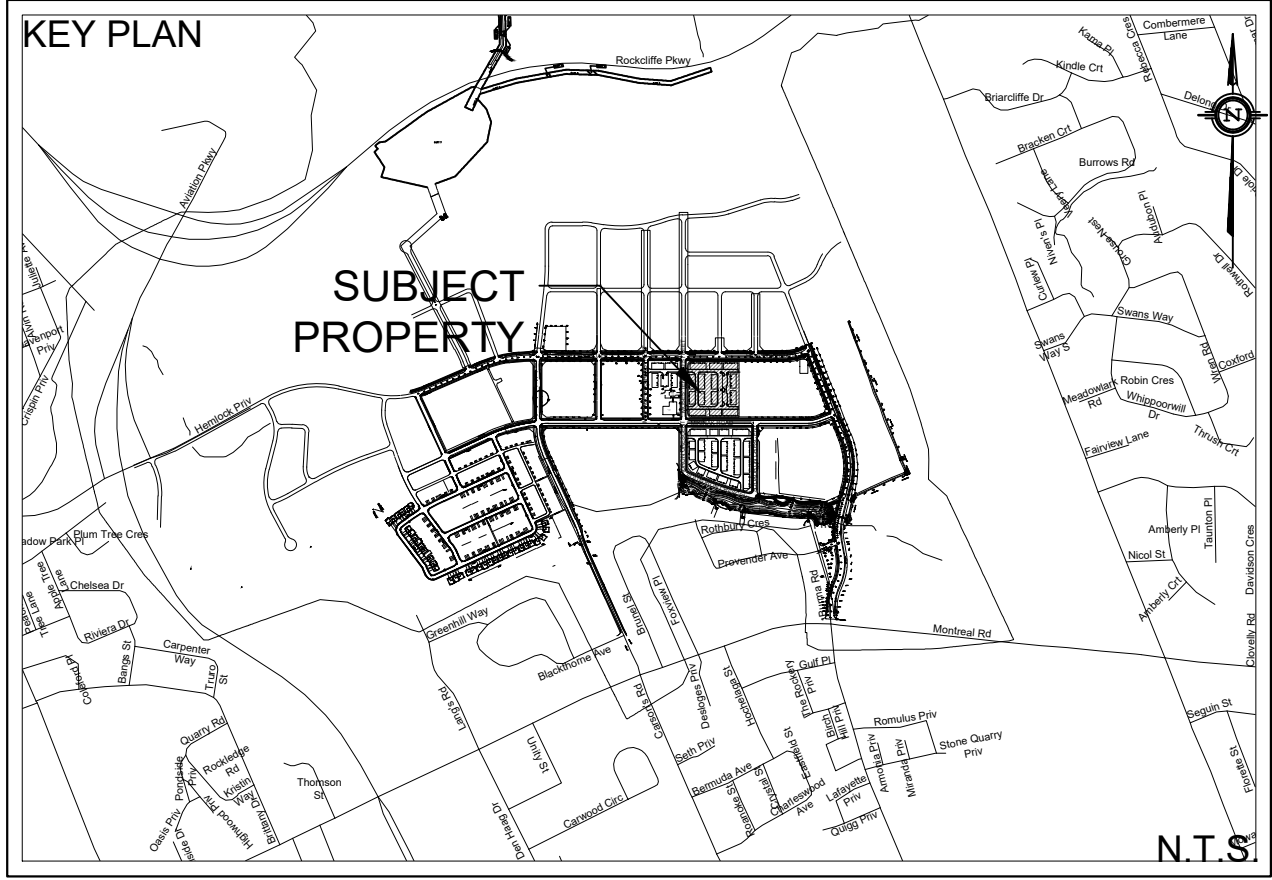
RAINWATER HARVESTING TANK DETAIL  
(SEE STRUCTURAL DRAWING FOR DETAILS)



DRAWING EXTRACTED FROM  
LRL ENGINEERING  
(FOR DETAILS REFER TO MECHANICAL PLAN  
DATED JUNE 14, 2018)



DRAWING EXTRACTED FROM  
LRL ENGINEERING  
(FOR DETAILS REFER TO MECHANICAL PLAN  
DATED JUNE 14, 2018)



NOT TO SCALE

APPROVED  
By Jeff McEwen at 3:40 pm, Aug 28, 2018

JEFF MCEWEN P.ENG.  
MANAGER, DEVELOPMENT REVIEW EAST BRANCH  
PLANNING, INFRASTRUCTURE & ECONOMIC  
DEVELOPMENT DEPARTMENT, CITY OF OTTAWA

APPROVED ☐ REFUSED ☐  
THIS \_\_\_\_ DAY OF \_\_\_\_\_, 20\_\_\_\_  
DOUGLAS JAMES, MCIP, RPP  
MANAGER, DEVELOPMENT REVIEW - CENTRAL  
PLANNING, INFRASTRUCTURE AND ECONOMIC  
DEVELOPMENT DEPARTMENT, CITY OF OTTAWA

NOT FOR CONSTRUCTION

SITE PLAN INFORMATION			
SITE PLAN PROVIDED BY KORSIAK URBAN PLANNING DATED JULY 10, 2018			
GEOTECHNICAL STUDY			
GEOTECHNICAL RECOMMENDATIONS PROVIDED BY PATERSON GROUP INC. PROJ. NO. PG064-1 DATED AUGUST 8 2017			
SITE SERVICING AND STORMWATER MANAGEMENT STUDY			
SERVICING AND STORMWATER MANAGEMENT RECOMMENDATIONS PROVIDED BY DSEL PROJ. NO. 17-949 DATED MARCH 2018			
BENCH MARK			
ELEVATIONS ARE GEODETIC, REFERRED TO CITY OF OTTAWA VERTICAL BENCHMARK NO. 396 ELEV = 95.05 METERS			
12	S.L.M.	18.07.19	ISSUED FOR MUNICIPAL APPROVAL
11	S.L.M.	18.07.12	ISSUED FOR MUNICIPAL APPROVAL
10	A.W.T.	18.07.03	ISSUED FOR SITE INSTRUCTION NO. 1
9	S.L.M.	18.06.20	ISSUED FOR MUNICIPAL REVIEW
8	S.L.M.	18.05.22	ISSUED FOR TENDER ADDENDUM
7	C.K.S.	18.05.04	ISSUED FOR TENDER
6	A.W.T.	18.03.07	ISSUED TO CLC FOR APPROVAL
5	A.W.T.	18.03.02	ISSUED FOR MUNICIPAL REVIEW
4	H.J.P.	17.12.14	ISSUED FOR MUNICIPAL REVIEW
3	S.L.M.	17.12.07	ISSUED FOR CLC REVIEW
2	A.D.F.	17.08.11	ISSUED FOR MUNICIPAL REVIEW
1	S.L.M.	17.08.02	ISSUED FOR CANADA LANDS COMPANY REVIEW
NO.	BY	YY.MM.DD	DESCRIPTION

REVIEWED BY

PROJECT No. 17-949

DETAILS  
WATERIDGE - BLOCK 24

MATTAMY HOMES

50 Hines Road, Suite 100  
Ottawa, Ontario, K2K 2M5  
Tel. (613) 831-5144

120 Iler Road Unit 103  
Stittsville, Ontario, K2S 1E9  
Tel. (613) 836-0856  
Fax. (613) 836-7183  
www.DSEL.ca

drawn by: A.W.T. checked by: S.L.M. drawing no. SHEET NO.  
designed by: B.N.C. checked by: A.D.F. DS-2 6 of 6  
scale: DATE: JULY 2018