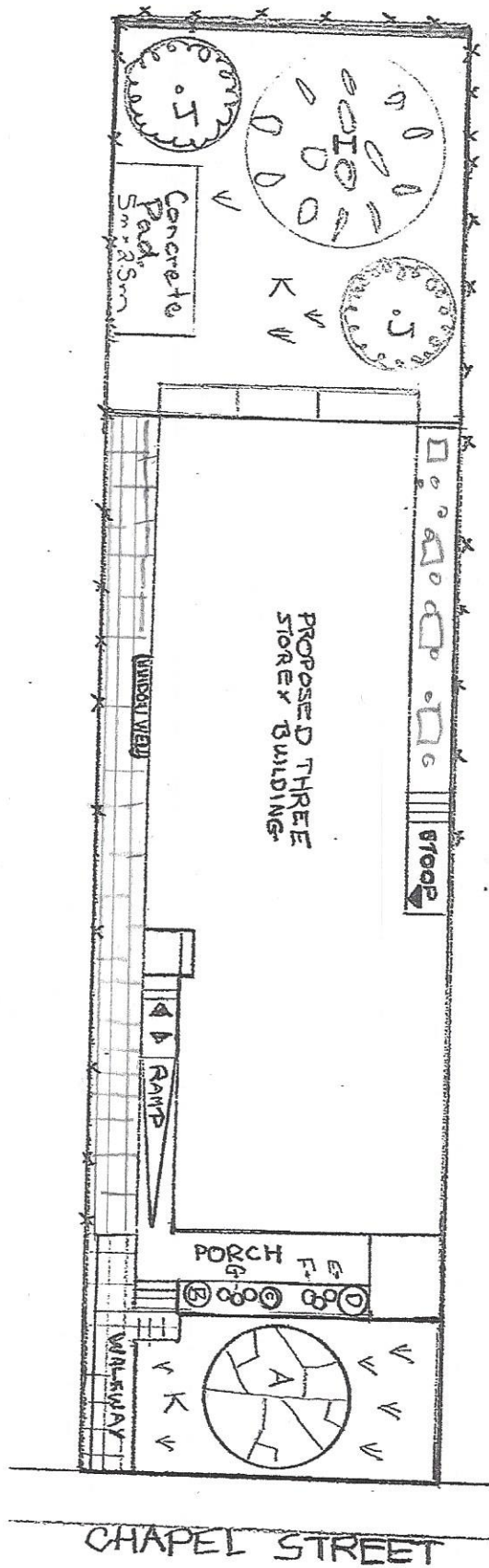


368 Chapel Street







LANDSCAPE DESIGN

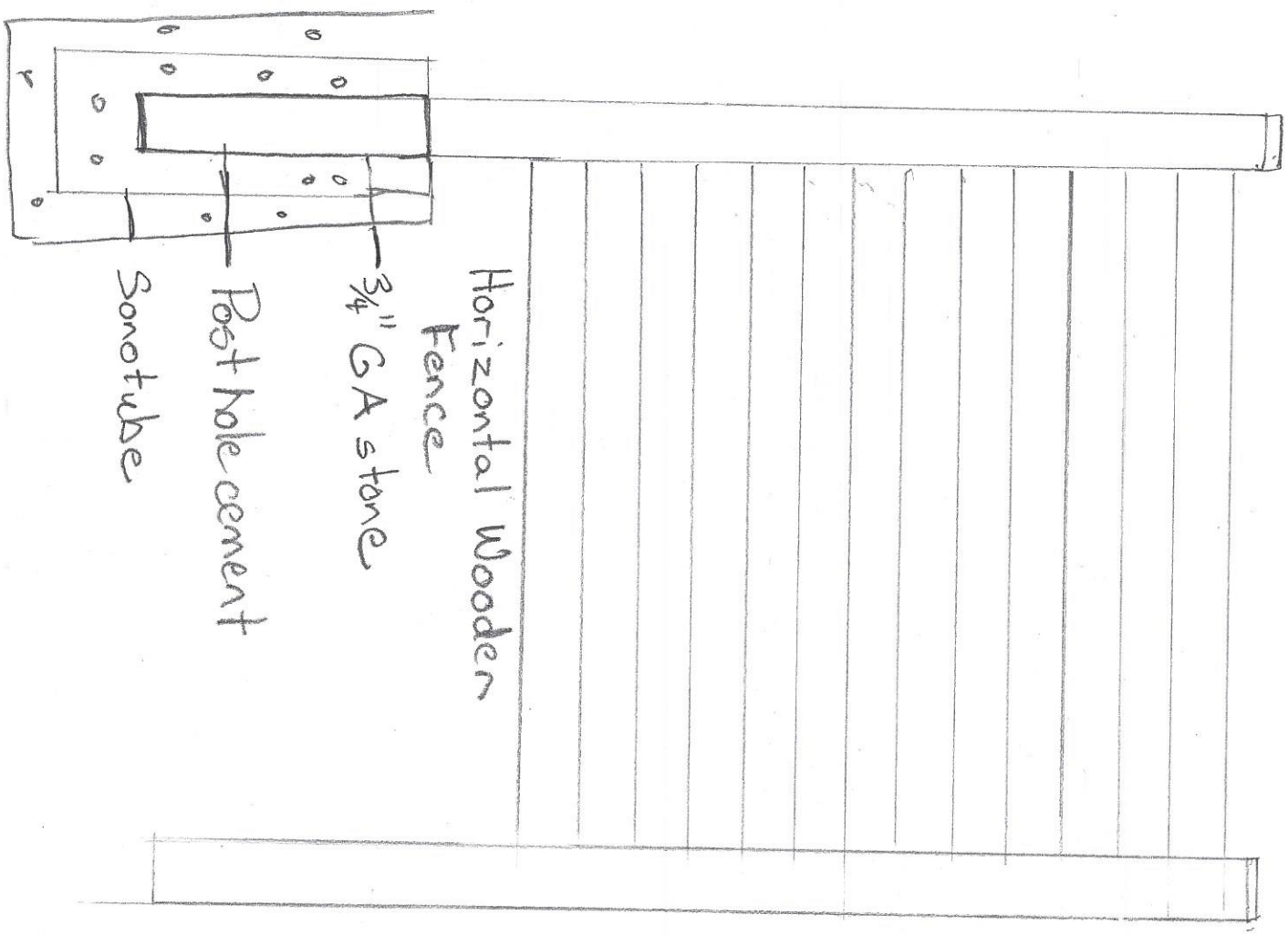
Plant Material

- A Ginkgo biloba 'Princeton Sentry' x1
- B Acer Palmatum 'Bloodgood' x1
- C Rhododendron 'PJM' x1
- D Viburnum Plicatum x1
- E Heuchera sp. (peach colour) x3
- F Sedum 'Autumn Joy' x1
- G Hemeracallis sp. (purple and yellow colour) x5
- H Allium 'Purple Sensation' x1
- I Gleditsia triacanthos 'Sunburst' x 1
- J Cornus racemose x 2
- K Sod for front and backyard

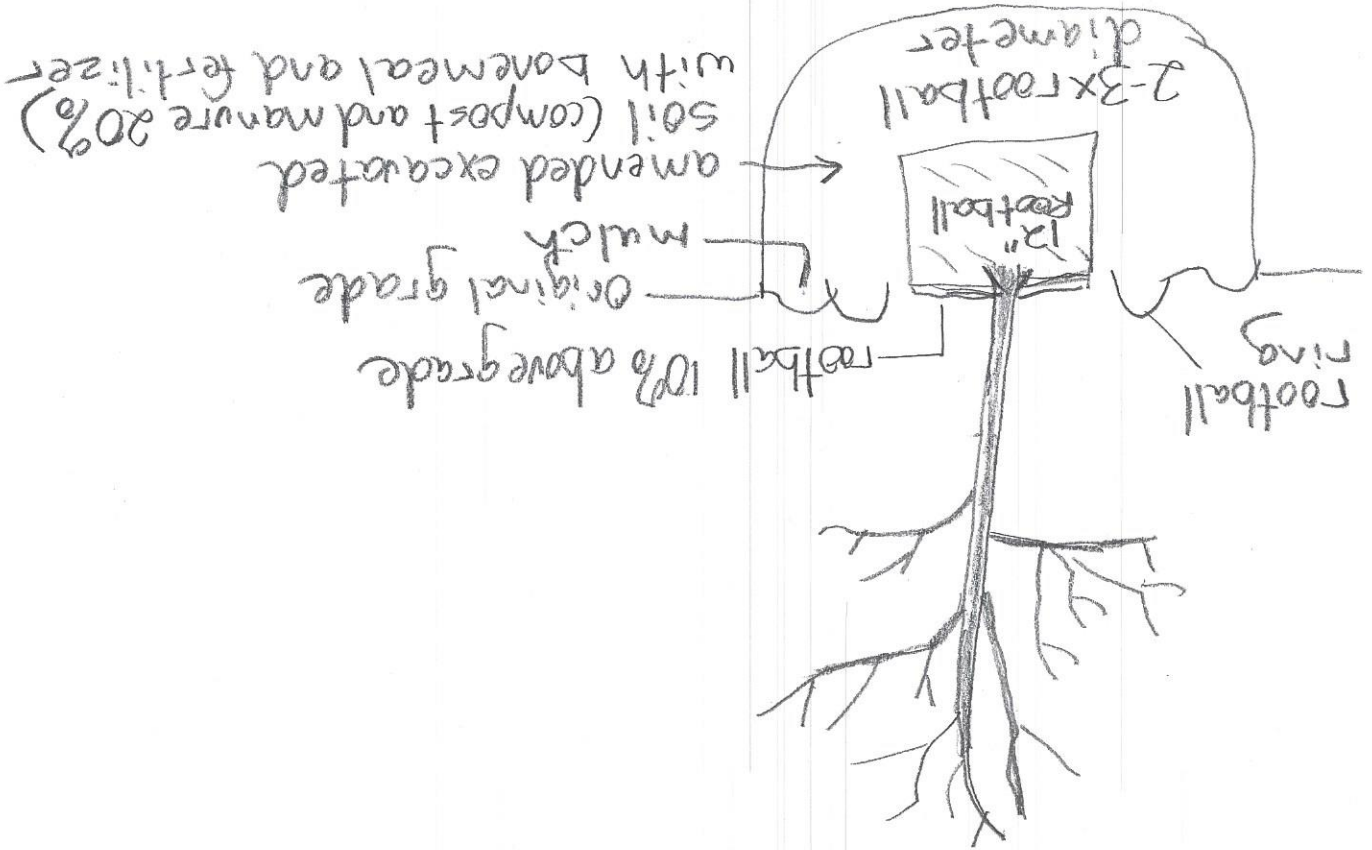
Hardscape Material

-  Interlocking Stone for pathway
-  Decorative Pea gravel (1/8" to 3/8" in size) in beds and side of house
-  3x Limestone rocks (2' to 3' rectangular size)
-  Fence for sideyard (5' to 7' ht)

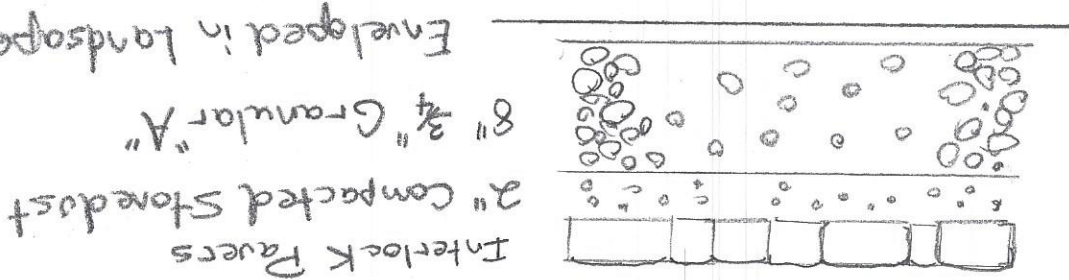
Wooden Fence Detail



Tree Planting Detail



Interlock Detail



Concrete Pad Detail

