

- MATERIALS LEGEND**
- CB1 – CEMENT BOARD. COLOUR: WHITE
 - CB2 – CEMENT BOARD. COLOUR: CHARCOAL GREY
 - AP – 'ALUCOBOND' METAL PANEL. COLOUR: LIME GREEN
 - MS – METAL SIDING. COLOUR: WHITE
 - SP – SPANDREL PANEL TO MATCH WINDOW FRAME COLOUR
 - MF – METAL FLASHING
 - SO – SOFFIT
 - C – CANOPY
 - P – PAINTED STEEL POST
 - G – GLASS GUARD

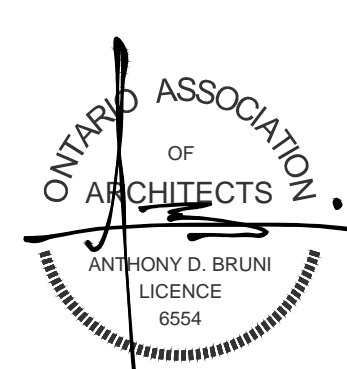
GENERAL NOTES:

1. LOCATION OF SIGNAGE

GENERAL NOTES

IT IS THE RESPONSIBILITY OF THE CONTRACTOR TO VERIFY ALL DIMENSIONS ON SITE AND REPORT ANY ERRORS AND OMISSIONS TO THE ARCHITECT. ALL CONTRACTORS MUST COMPLY WITH ALL PERTINENT CODES AND BY-LAWS. DO NOT SCALE DRAWINGS. THESE DRAWINGS MAY NOT BE USED FOR CONSTRUCTION UNTIL SIGNED. THIS DRAWING IS THE EXCLUSIVE PROPERTY OF COLIZZA BRUNI ARCHITECTURE INCORPORATED. COPYRIGHT RESERVED.

NO.	REV DATE	REV DESCRIPTION
1	18/03/22	FOR SITE PLAN CONTROL APP.



COLIZZA BRUNI
architecture

76 CHAMBERLAIN AVE • OTTAWA • ONTARIO • K1S 1V3
T 613.236.2944 • F 613.236.8777 • www.colizzabruni.com

PROJECT NAME
83 HINTON AVE. NORTH

OTTAWA, ON

DRAWING TITLE
ELEVATION

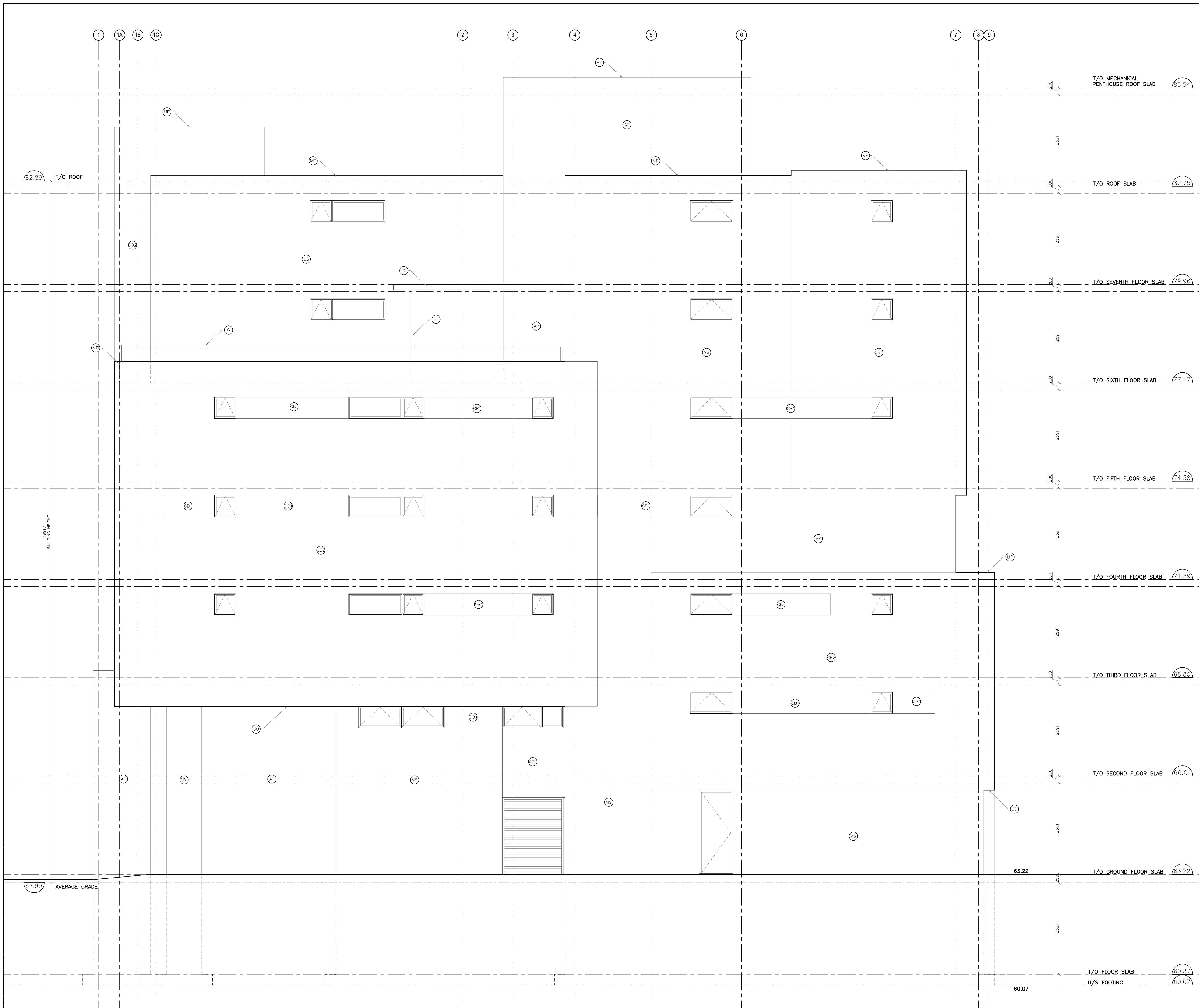
SCALE NOTED
DRAWN BY

DATE
MAR 2018

PROJECT NO.
009-17

DRAWING NO.
A10

1 WEST ELEVATION
1 : 50



- MATERIALS LEGEND**
- CB1 – CEMENT BOARD, COLOUR: WHITE
 - CB2 – CEMENT BOARD, COLOUR: CHARCOAL GREY
 - AP – 'ALUCOBOND' METAL PANEL, COLOUR: LIME GREEN
 - MS – METAL SIDING, COLOUR: WHITE
 - SP – SPANDREL PANEL TO MATCH WINDOW FRAME COLOUR
 - MF – METAL FLASHING
 - SO – SOFFIT
 - C – CANOPY
 - P – PAINTED STEEL POST
 - G – GLASS GUARD

GENERAL NOTES:
1. LOCATION OF SIGNAGE

GENERAL NOTES
IT IS THE RESPONSIBILITY OF THE CONTRACTOR TO VERIFY ALL DIMENSIONS ON SITE AND REPORT ANY ERRORS AND OMISSIONS TO THE ARCHITECT. ALL CONTRACTORS MUST COMPLY WITH ALL PERTINENT CODES AND BY-LAWS. DO NOT SCALE DRAWINGS. THESE DRAWINGS MAY NOT BE USED FOR CONSTRUCTION UNTIL SIGNED. THIS DRAWING IS THE EXCLUSIVE PROPERTY OF COLIZZA BRUNI ARCHITECTURE INCORPORATED. COPYRIGHT RESERVED.

NO.	REV DATE	REV DESCRIPTION
1	18/03/22	FOR SITE PLAN CONTROL APP.



76 CHAMBERLAIN AVE • OTTAWA • ONTARIO • K1S 1Y5
T 613.236.2544 • F 613.236.8777 • www.colizzabruni.com

PROJECT NAME
83 HINTON AVE. NORTH

OTTAWA, ON

DRAWING TITLE
ELEVATION

SCALE
NOTED

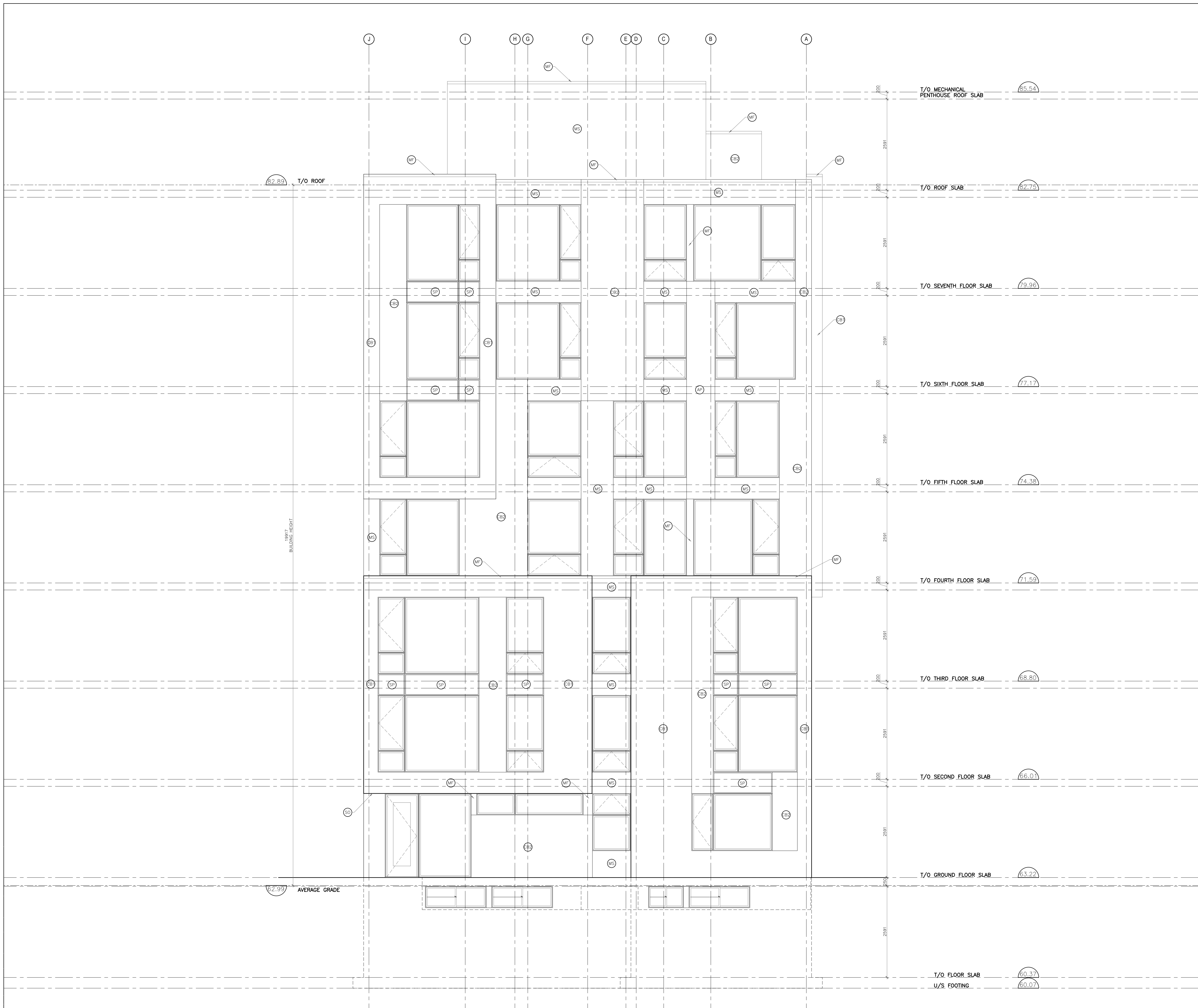
DRAWN BY

DATE
MAR 2018

PROJECT NO.
009-17

DRAWING NO.
A11

1 SOUTH ELEVATION
1:50

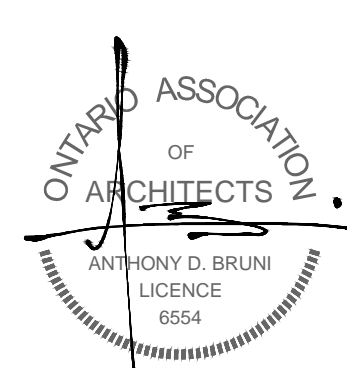


- MATERIALS LEGEND**
- CB1 – CEMENT BOARD, COLOUR: WHITE
 - CB2 – CEMENT BOARD, COLOUR: CHARCOAL GREY
 - AP – 'ALUCOBOND' METAL PANEL, COLOUR: LIME GREEN
 - MS – METAL SIDING, COLOUR: WHITE
 - SP – SPANDREL PANEL TO MATCH WINDOW FRAME COLOUR
 - MF – METAL FLASHING
 - SO – SOFFIT
 - C – CANOPY
 - P – PAINTED STEEL POST
 - G – GLASS GUARD
- GENERAL NOTES:**
1. LOCATION OF SIGNAGE

GENERAL NOTES

IT IS THE RESPONSIBILITY OF THE CONTRACTOR TO VERIFY ALL DIMENSIONS ON SITE AND REPORT ANY ERRORS AND OMISSIONS TO THE ARCHITECT. ALL CONTRACTORS MUST COMPLY WITH ALL PERTINENT CODES AND BY-LAWS. DO NOT SCALE DRAWINGS. THESE DRAWINGS MAY NOT BE USED FOR CONSTRUCTION UNTIL SIGNED. THIS DRAWING IS THE EXCLUSIVE PROPERTY OF COLIZZA BRUNI ARCHITECTURE INCORPORATED. COPYRIGHT RESERVED.

NO.	REV DATE	REV DESCRIPTION
1	18/03/22	FOR SITE PLAN CONTROL APP.



COLIZZA BRUNI
architecture

76 CHAMBERLAIN AVE • OTTAWA • ONTARIO • K1S 1Y5
T 613.236.2944 • F 613.236.8777 • www.colizzabruni.com

PROJECT NAME
83 HINTON AVE. NORTH

OTTAWA, ON

DRAWING TITLE
ELEVATION

SCALE
NOTED

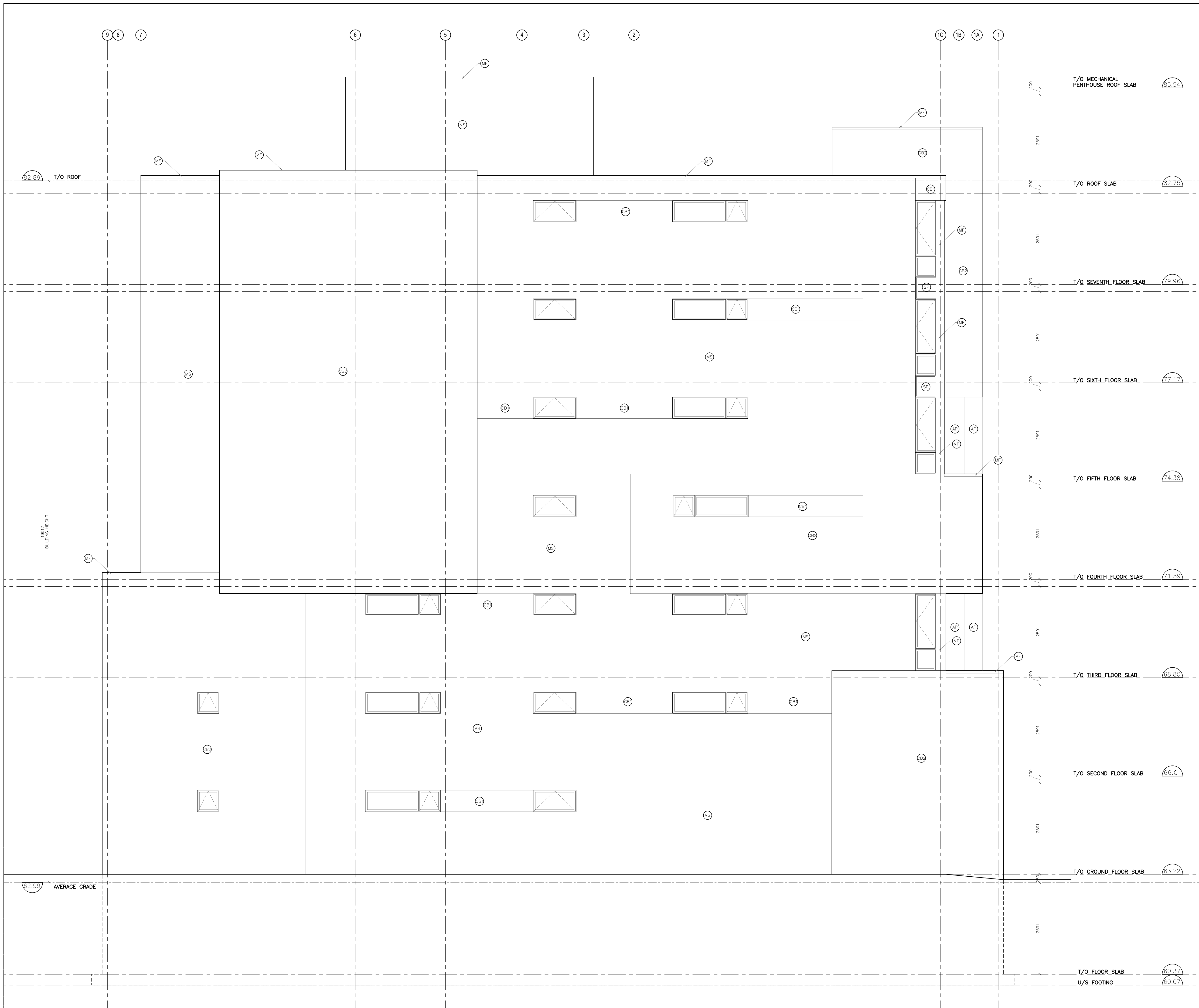
DRAWN BY

DATE
MAR 2018

PROJECT NO.
009-17

DRAWING NO.
A12

1 EAST ELEVATION
1 - 50



MATERIALS LEGEND

- CB1 – CEMENT BOARD, COLOUR: WHITE
- CB2 – CEMENT BOARD, COLOUR: CHARCOAL GREY
- AP – 'ALUCOBOND' METAL PANEL, COLOUR: LIME GREEN
- MS – METAL SIDING, COLOUR: WHITE
- SP – SPANDREL PANEL TO MATCH WINDOW FRAME COLOUR
- MF – METAL FLASHING
- SO – SOFFIT
- C – CANOPY
- P – PAINTED STEEL POST
- G – GLASS GUARD

GENERAL NOTES:

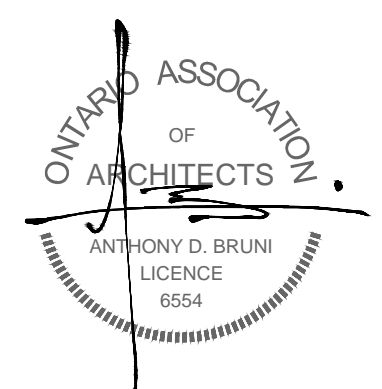
1. LOCATION OF SIGNAGE

GENERAL NOTES

IT IS THE RESPONSIBILITY OF THE CONTRACTOR TO VERIFY ALL DIMENSIONS ON SITE AND REPORT ANY ERRORS AND OMISSIONS TO THE ARCHITECT. ALL CONTRACTORS MUST COMPLY WITH ALL PERTINENT CODES AND BY-LAWS. DO NOT SCALE DRAWINGS. THESE DRAWINGS MAY NOT BE USED FOR CONSTRUCTION UNTIL SIGNED. THIS DRAWING IS THE EXCLUSIVE PROPERTY OF COLIZZA BRUNI ARCHITECTURE INCORPORATED. COPYRIGHT RESERVED.

NO. REV DATE REV DESCRIPTION

1	18/03/22	FOR SITE PLAN CONTROL APP.
---	----------	----------------------------



COLIZZA BRUNI
architecture

76 CHAMBERLAIN AVE • OTTAWA • ONTARIO • K1S 1Y5
T 613.236.2944 • F 613.236.8777 • www.colizzabruni.com

PROJECT NAME

83 HINTON AVE. NORTH

OTTAWA, ON

DRAWING TITLE

ELEVATION

SCALE

NOTED

DRAWN BY

DATE

MAR 2018

PROJECT NO.

009-17

DRAWING NO.

A13

1 NORTH ELEVATION
1:50