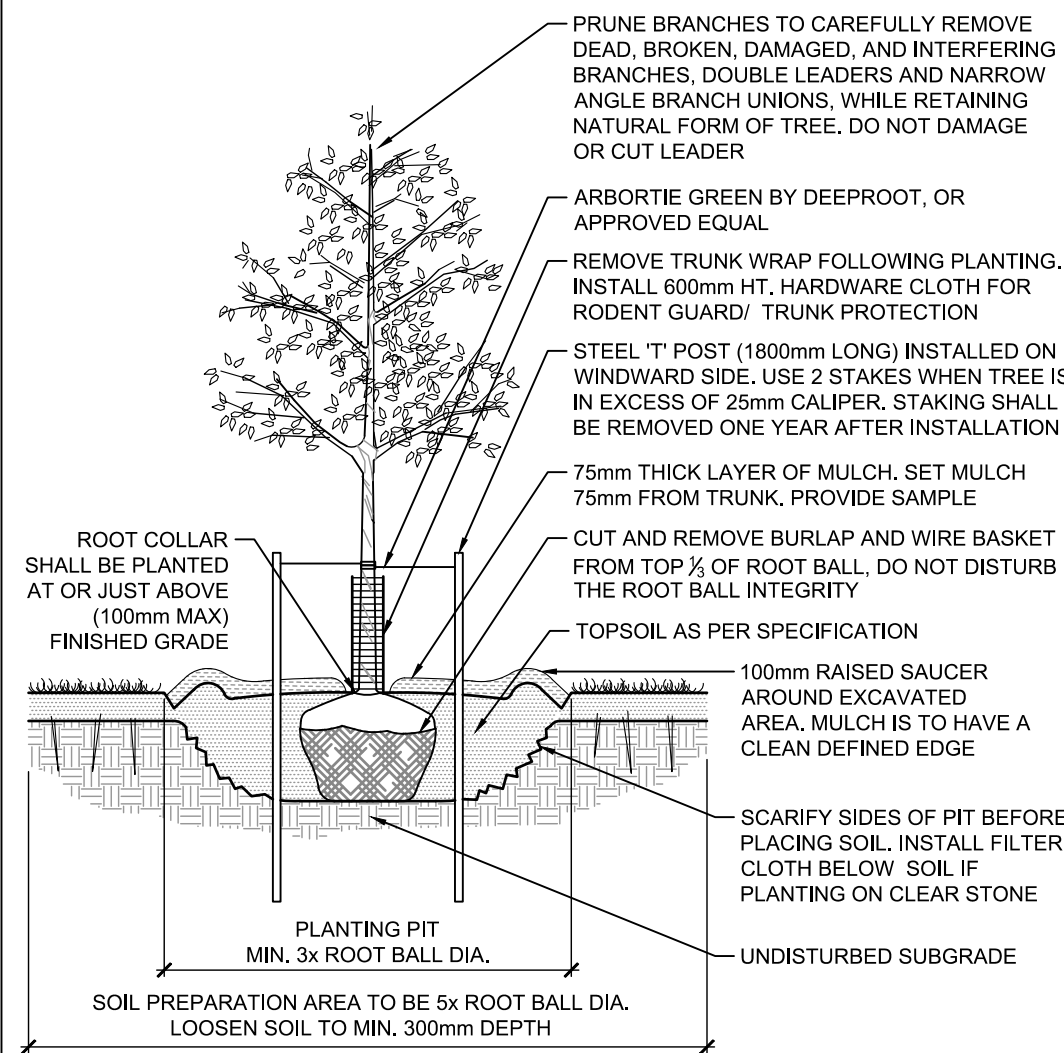


M:\2017\117202\CAD\Landscape\LPan\117202-L.dwg, L-1, Dec 08, 2017 - 1:55pm, twainson

NOTE:  
THE POSITION OF ALL POLE LINES, CONDUITS,  
WATERMAINS, SEWERS AND OTHER  
UNDERGROUND AND OVERGROUND UTILITIES AND  
STRUCTURES IS NOT NECESSARILY SHOWN ON  
THE CONTRACT DRAWINGS, AND WHERE SHOWN,  
THE ACCURACY OF THE POSITION OF SUCH  
UTILITIES AND STRUCTURES IS NOT GUARANTEED.  
BEFORE STARTING WORK, DETERMINE THE EXACT  
LOCATION OF ALL SUCH UTILITIES AND  
STRUCTURES AND ASSUME ALL LIABILITY FOR  
DAMAGE TO THEM.

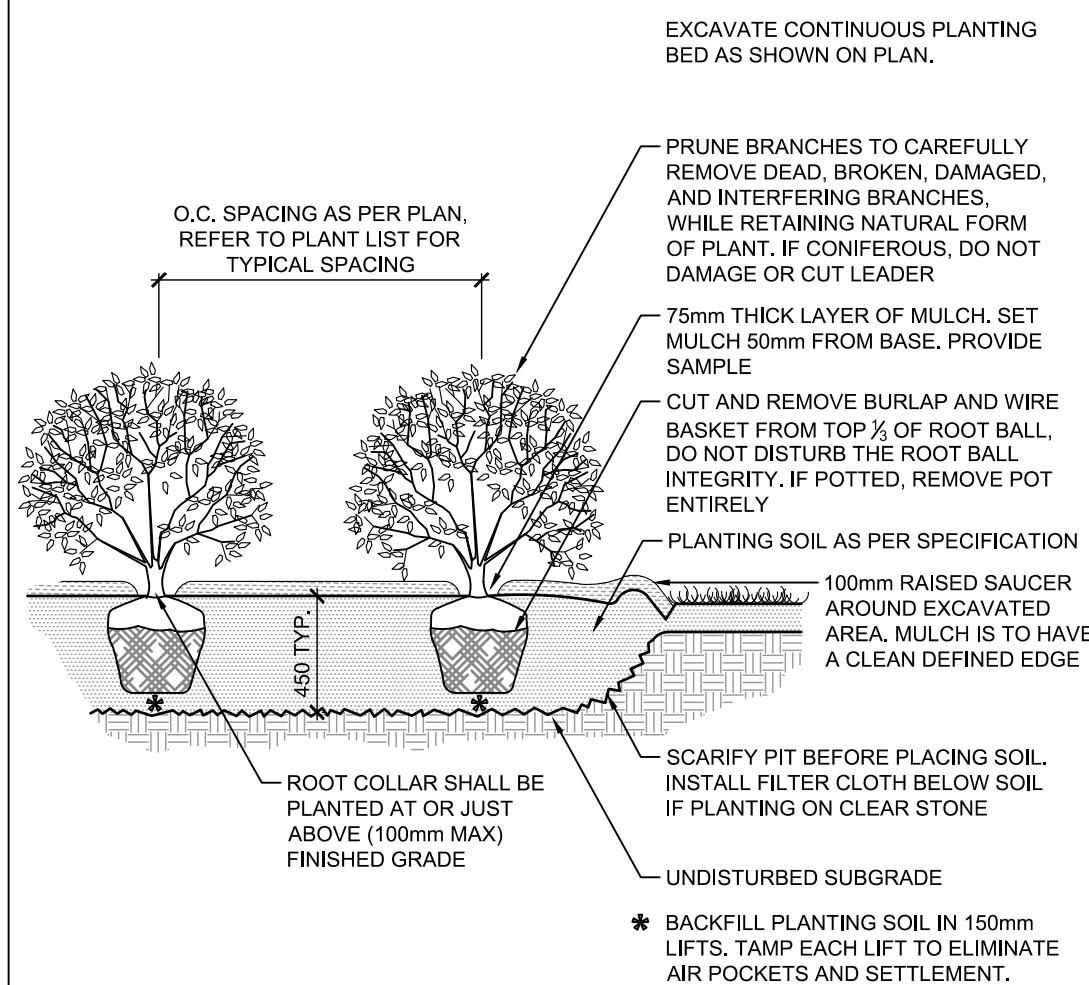
## GENERAL NOTES:

- All general site information and conditions are compiled from consultant's field notes and plans provided by the owner and are supplied for information purposes only. It shall be the responsibility of the contractor to verify the accuracy of all the information obtained from this plan.
- Contractor to check and report any discrepancies before commencing work. No responsibility is borne by the consultants for unknown utilities or subsurface conditions.
- Contractor to check and verify all dimensions on site and report any errors or omissions to the Project Manager.
- Drawings not to be scaled. Work to dimensions only.
- Refer to engineering drawings for site servicing.
- This drawing is to be read and interpreted in conjunction with the contract details and specifications.
- Contractor is responsible for all fees arising from the completion of works conveyed by these drawings, details & specifications. Fees include but are not limited to securities, permit fees, deposits, application fees, letters of credit, or any other related funding requests.
- All construction to be carried out in accordance with the most current provincial and municipal standards and specifications.
- Contractor to coordinate all access and protect the general public and users of the site with appropriate control fencing and supervision throughout the construction period, to the satisfaction of the facility manager and the project manager.
- Contractor responsible for the removal and off site disposal of all materials as required to facilitate new construction. All items and materials identified by the consultant to be salvaged shall be stored at a location on site as identified by the consultant.
- Site shall be maintained in a clean and orderly state for the duration of construction; all work shall be performed in accordance with the occupational health and safety act.
- Reinstate all areas and items damaged or disturbed as a result of construction activities beyond the limit of work to the satisfaction of the project manager.



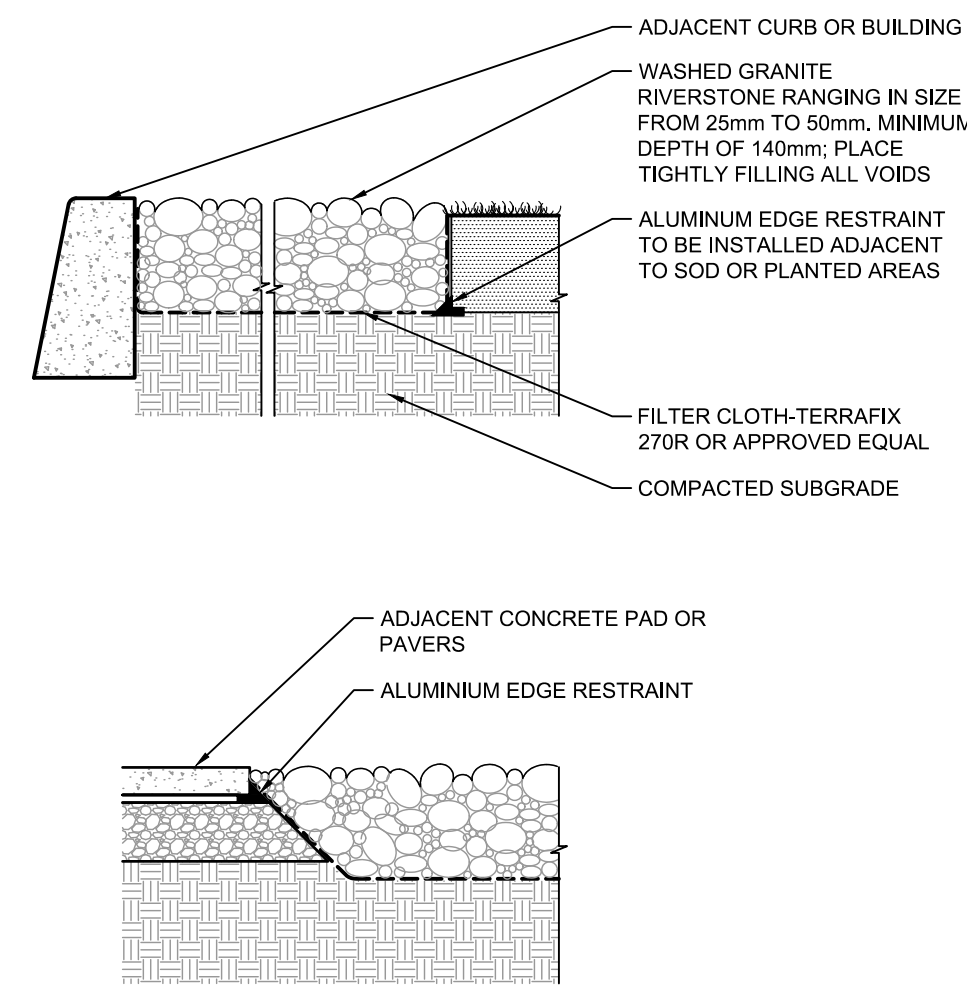
STANDARD DECIDUOUS TREE PLANTING

D1



SHRUB AND PERENNIAL PLANTING

D2



RIVERSTONE

D3

NOT FOR  
CONSTRUCTION

No.	REVISION	DATE	BY
1.	ISSUED FOR COORDINATION	DEC 7/17	RJ

SCALE
1:100
1:100
0 1 2 3 4

DESIGN
KW
CHECKED
RJ
DRAWN
KW/MT
CHECKED
RJ
APPROVED
RJ

## FOR REVIEW ONLY

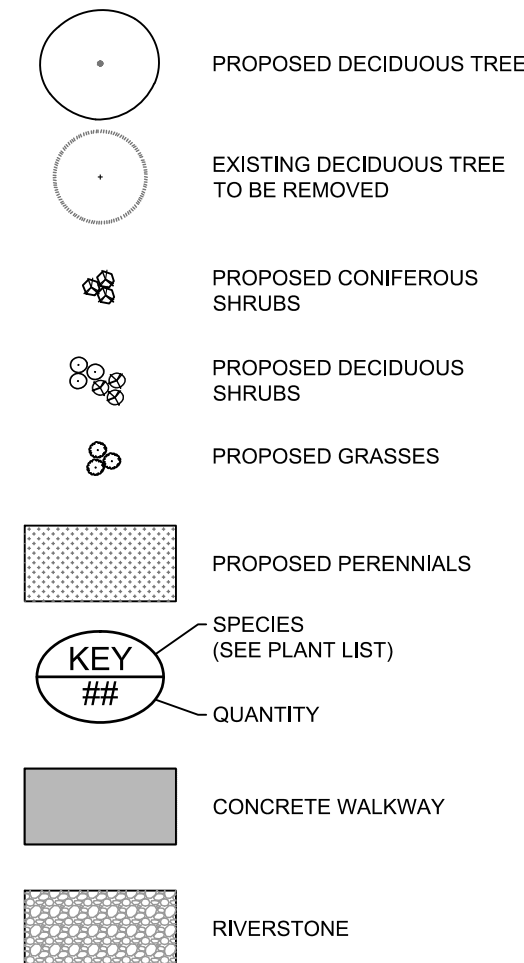
**NOVATECH**  
Engineers, Planners & Landscape Architects  
Suite 200, 240 Michael Cowpland Drive  
Ottawa, Ontario, Canada K2M 1P6  
Telephone (613) 254-9643  
Facsimile (613) 254-5867  
Website www.novatech-eng.com

LOCATION  
CITY of OTTAWA  
423, 425 MCLEOD STREET AND 443, 447 KENT STREET

DRAWING NAME  
LANDSCAPE PLAN

PROJECT NO.
117202-00
REV
REV #1
DRAWING NO.
117202-L1

## LANDSCAPE LEGEND:



## PLANTING NOTES

- This drawing shall be read in conjunction with all relevant **Architectural**, Engineering, and related drawings and documents.
- Refer to Engineering Drawings for Grading. Provide drainage as indicated in grading plan. Round all tops and toes of slopes, smoothly. Compact all areas to 95% Standard Proctor Density unless otherwise noted.
- Refer to **Architectural Drawings for site layout**.
- Refer to Engineering Drawings for site servicing.
- Contractor must contact utility companies for locates prior to excavation or planting.
- It is essential to use the plans and details in conjunction with the specifications and notes. Some or all of the notes may not apply to the special requirements of a plant species or a planting environment.
- Existing trees to be retained shall be protected according to the contract detail and specifications.
- Plant material shall be No. 1 Grade and shall comply with Canadian Standards for Nursery Stock (latest edition) published by the Canadian Nursery Landscape Association.
- Use plant material with strong fibrous root system free of disease, defects or injuries, and structurally sound. Use trees with straight trunks, well and characteristically branched for species. Obtain approval from consultant of plant material at source prior to digging. All trees and shrubs shall be container grown, potted, W/B or B/B, as indicated on Plant List. Bare root planting will only be acceptable for certain species and as approved by the Landscape Architect.
- Plant material substitutions shall not be permitted without the written approval from the consultant, **with 48 hours notice**, prior to shipping plant material.
- Plant locations are schematic / approximate only. **Contractor shall stake out locations on site for approval by the Landscape Architect prior to installation**. The illustrated number of plants shown in the Planting Plan supersedes the estimated number in the Plant List. Contractor to report any discrepancies to the Landscape Architect prior to installation. Contractor will assume full responsibility if the Landscape Architect is not notified.
- Shrubs, Perennials, Vines, and Groundcovers shall be planted in a continuous planting bed of **450mm** depth with approved topsoil covered with **75mm** depth shredded bark mulch.
- Ensure trees are thoroughly watered following planting. Monitor material and ensure adequate moisture until acceptance.
- In heavy clay or poorly drained soils, set root ball with root collar 75-100mm higher than finished grade.
- Sod and/or seed areas to receive **100mm** depth topsoil as specified. Sod shall be No. 1 Kentucky Bluegrass Sod grown from minimum mixture of 3 Kentucky Bluegrass cultivars. Quality and source shall comply with Canadian Standards for Nursery Stock, Section 17, (latest edition) published by the Canadian Nursery Landscape Nursery Landscape Association. Unless otherwise specified, turf is to be maintained by the contractor until a second cutting is accepted by the Landscape Architect.
- Apply the following mineral fertilizer unless soil tests show other requirements: Sodded areas - (8-32-16) 8% Nitrogen, 32% Phosphorus, 16% Potash at a rate of 350kg/ha. - Planting Beds - (8-32-16) - 8% Nitrogen, 32% Phosphorus, 16% Potash as per manufacturer specifications.
- Reinstate all areas damaged or disturbed beyond the Limit of Work.

## Existing Tree Inventory

November 29, 2017

No.	Botanical Name	Common Name	DBH (m)	CR2 (m)	Condition	Remarks	Recommend
1	Ulmus pumila	Siberian Elm	0.23	2.30	P	Entangled w/ hydro pole and lines	Remove
2	Ulmus pumila	Siberian Elm	0.53	5.30	F	Supporting tree house	Remove
3	Acer negundo	Manitoba Maple	0.50	5.00	F	Two trunks each @ 0.25 Leaning. Supporting tree house.	Remove
4	Acer negundo	Manitoba Maple	0.28	2.80	F		Remove
5	Fraxinus	Ash	0.30	3.00	P		Remove
6	Acer negundo	Manitoba Maple	0.28	2.80	F		Remove
7	Acer negundo	Manitoba Maple	0.28	2.80	F	Leaning	Remove
8	Acer rubrum	Red Maple	0.81	8.10	G	On the property line. Shared ownership.	Remove

## 117202 - 425 McLeod Street - Proposed Plant List

KEY	QTY	BOTANICAL NAME	COMMON NAME	SIZE	COND	SPACING
<b>Deciduous Trees</b>						
GTD	1	<i>Gleditsia triacanthos 'Draves'</i>	Street Keeper Locust	60mm Cal	WB	As Shown
TB	1	<i>Tilia americana 'Boulevar'</i>	Boulevard Linden	60mm Cal	WB	As Shown
<b>Coniferous Shrubs</b>						
Tcn	7	<i>Taxus cuspidata 'Nana'</i>	Dwarf Japanese Yew	50cm Spr	PT	120cm O.C.
Tmh	2	<i>Taxus media 'Hicksii'</i>	Hicks Yew	100cm Spr	PT	As Shown
<b>Deciduous Shrubs</b>						
Hsa	16	<i>Hydrangea arborescens 'Annabelle'</i>	Annabelle Hydrangea	0.60m Ht	PT	100cm O.C.
Psw	19	<i>Physocarpus opulifolius 'Severd'</i>	Summer Wine Ninebark	0.60m Ht	PT	100cm O.C.
Rsp	13	<i>Rosa 'Snow Pavement'</i>	Snow Pavement Rose	0.60m Ht	PT	100cm O.C.
<b>Perennials</b>						
gms	16	<i>Geranium macrorrhizum 'Spessart'</i>	Spessart Cranesbill	1g	PT	60cm O.C.
<b>Ornamental Grasses</b>						
ckf	30	<i>Calamagrostis acutiflora 'Karl Foerster'</i>	Karl Foerster Feather Reed Grass	1g	PT	45cm O.C.