

GENERAL NOTES:

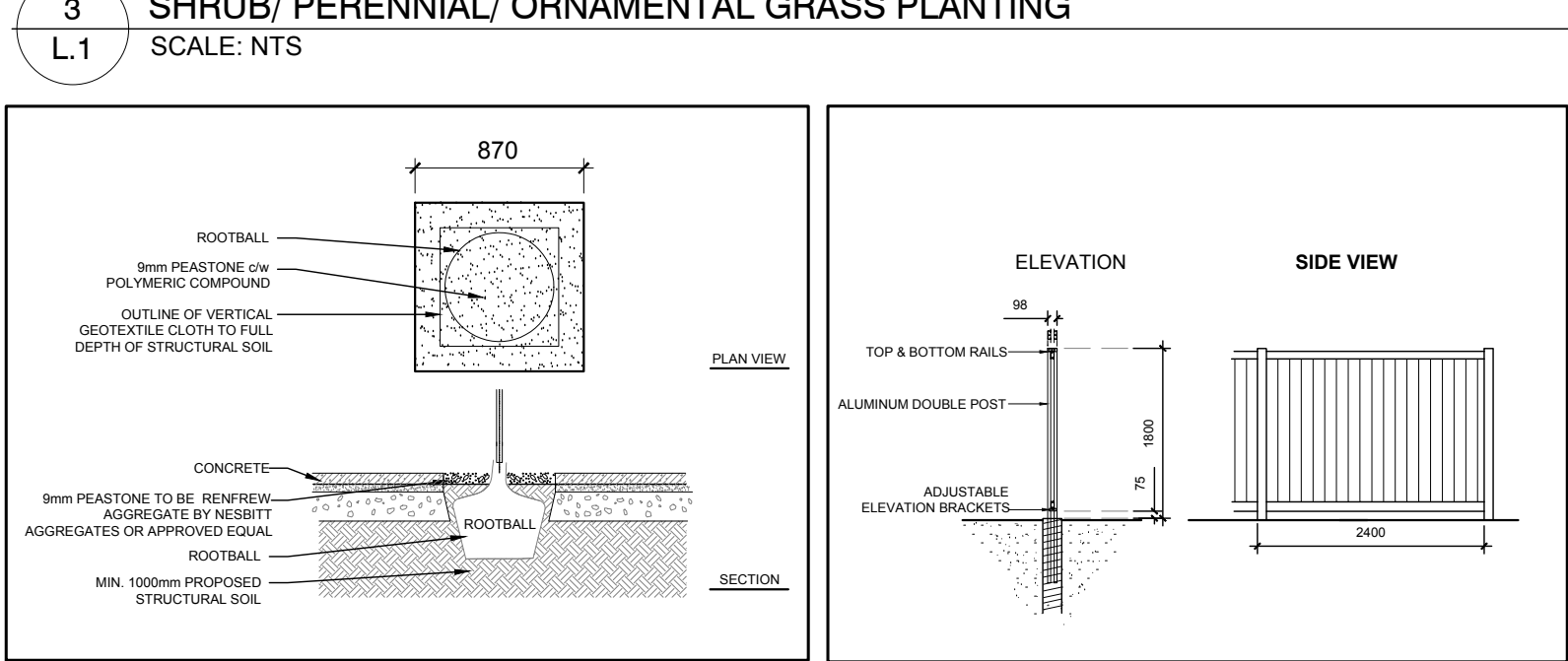
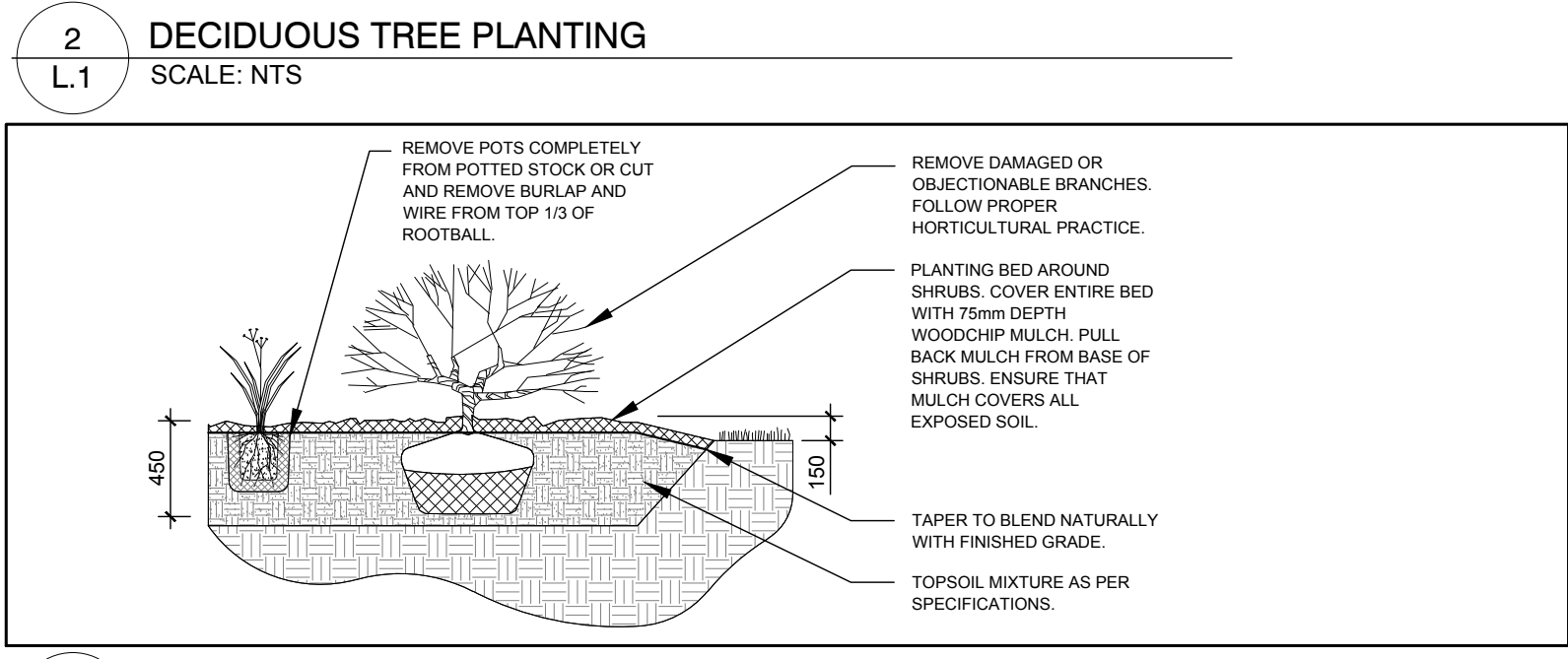
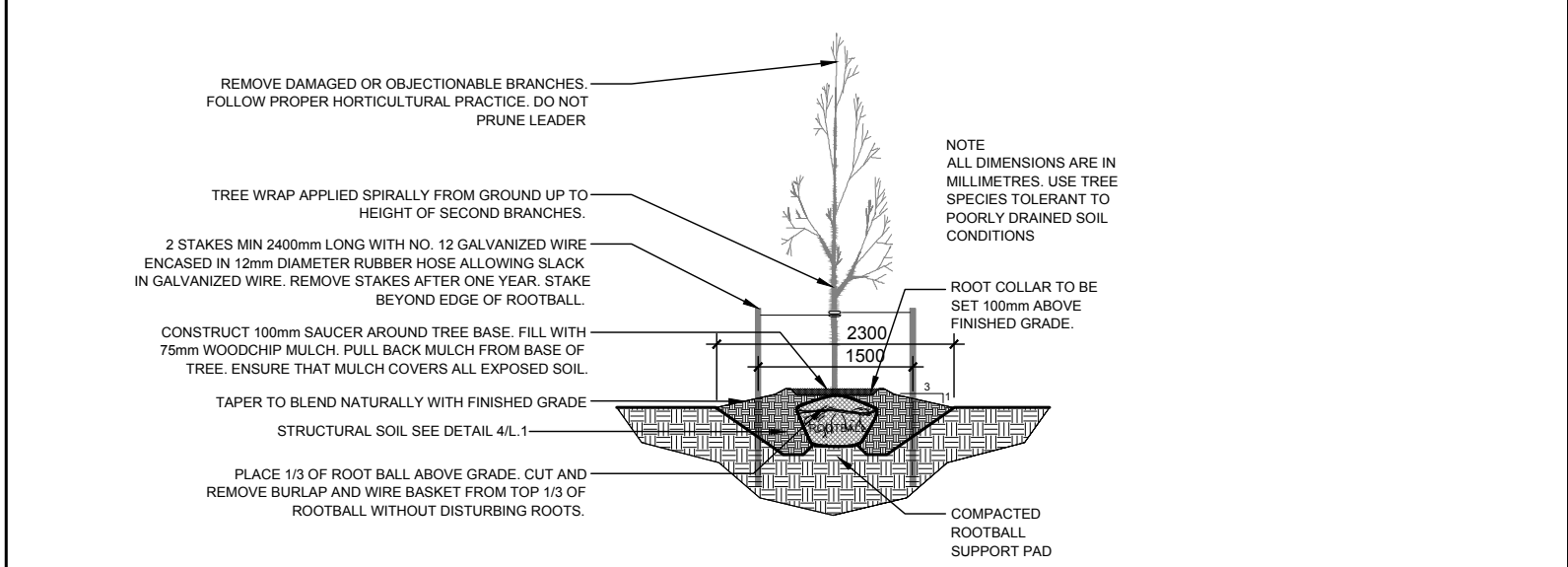
1. It is the responsibility of the appropriate contractor or official to report any errors, omissions or discrepancies on this plan with actual site conditions to the Landscape Architect before proceeding with construction.
2. The contractor is to notify all utility companies and authorities prior to any excavation and ascertain locations of underground services.
3. The contractor is to reinstate all areas and items damaged as a result of construction activity.
4. The contractor is to comply with all pertinent codes and by-laws.
5. The contractor is to maintain a positive surface run-off throughout the entire construction period.
6. The Landscape Architect is not responsible for subsurface conditions.
7. The contractor is to identify all existing trees to remain on site with the Landscape Architect prior to construction.
8. The contractor is to stake the proposed location of all plant material in conjunction with the Landscape Architect prior to excavation.
9. Minimum distances for selected deciduous trees are as follows:
 - Building Foundations 7.5m
 - Sidewalks 1.5m
 - Public Streets 2.5m
 - Underground Infrastructure 2.0m
10. All trees within 1m of underground utility trenches are to be excavated by hand.
11. Remove all protective wrapping from tree trunks after installation.
12. Staking of trees shall only be performed if necessary.
13. Ensure that mulch is pulled back a min. distance of 75mm from base of tree trunk.

EXISTING TREE LIST

KEY	QTY	BOTANICAL NAME	COMMON NAME	SIZE	CONDITION	REMARKS
TREES						
AN	1	Acer negundo	Manitoba Maple	3x350mm Ø	POOR	See Plan
AP	1	Acer platanoides	Norway Maple	450mm Ø	GOOD	See Plan
GT	2	Gleditsia triacanthos	Honey Locust	100mm Ø	GOOD	See Plan
TO	1	Thuja occidentalis	White Cedar	100mm Ø	GOOD	See Plan

PROPOSED PLANT LIST

KEY	QTY	BOTANICAL NAME	COMMON NAME	SIZE	CONDITION	REMARKS
TREES						
HL	2	Gleditsia triacanthos 'Draves'	Street Keeper Honey Locust	70mm Ø	B&B	See Plan
SHRUBS						
AH	14	Hydrangea arborescens 'Annabelle'	Annabelle Hydrangea	800mm HL	1 Gal Pot.	Space 1000mm O.C.
PERENNIALS / ORNAMENTAL GRASSES						
AJ	9	Sedum 'Autumn Joy'	Autumn Joy Sedum	250mm Pot.	Potted	Space 400mm O.C.
CB	28	Calamagrostis brachytricha	Korean Feather Reed Grass	250mm Pot.	Potted	Space 600mm O.C.



4 PEASTONE AT TREE WITH STRUCTURAL SOIL
SCALE: NTS

5 1.8m Ht. ALCUF FENCE WITH WOOD INFILL
SCALE: NTS

CLIENT: **TC UNITED GROUP**

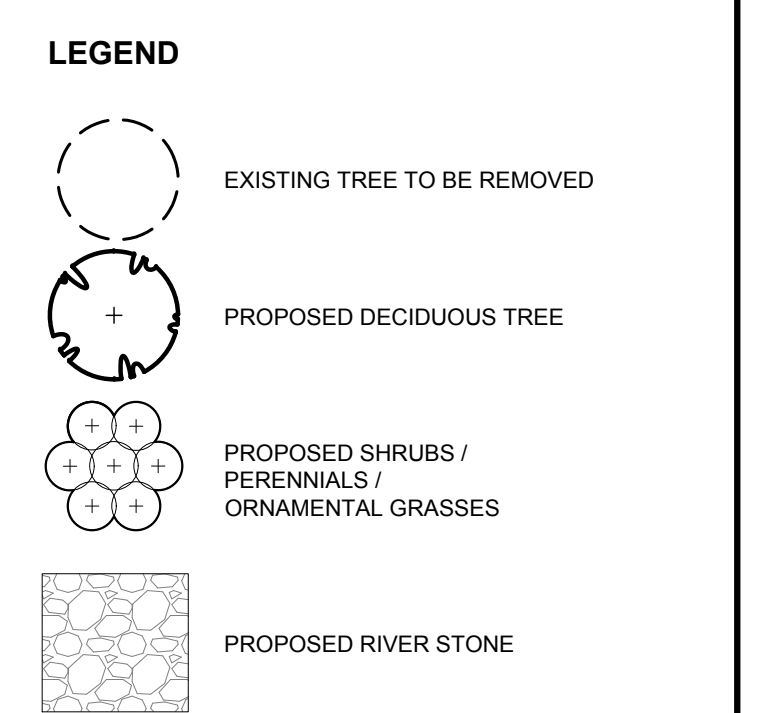
1800 INDUSTRIAL AVE, UNIT 9
OTTAWA, ON
Tel: (613) 680-5882

CONSULTANTS:

ARCHITECTS: **project1 studio**
Project Studio Incorporated
(613) 894-3939 | info@project1studio.ca

CIVIL ENGINEERS:

DSEL LTD.
120 IBER ROAD, SUITE 103
OTTAWA, ON
Tel: (613) 836-0856



1	ISSUED FOR SITE PLAN APPROVAL	10/30/2017	ML	JL
No.	Issue	Date	DR	CK

JAMES B. LENNOX & ASSOCIATES INC.
LANDSCAPE ARCHITECTS
3332 CARLING AVE. OTTAWA, ONTARIO K2H 5A5
Tel: (613) 722-5168 Fax: (866) 343-3942

PROJECT

440 BRONSON
440-444 BRONSON AVENUE, OTTAWA ON

DRAWING

TREE CONSERVATION REPORT &
LANDSCAPE PLAN

STAMP

SCALE

AS SHOWN

START DATE

OCTOBER 2017

PROJECT NO.

PROJECT NORTH

DRAWING NO.

L.1

PLOT SIZE ARCH-D